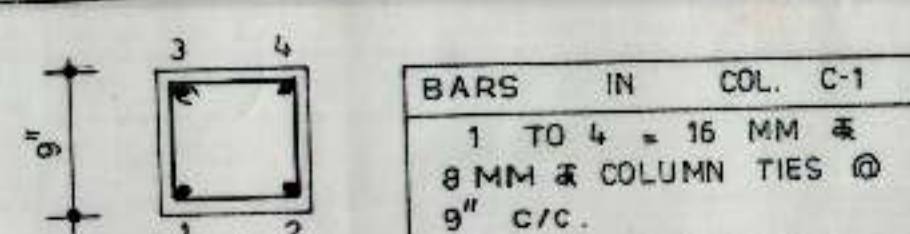
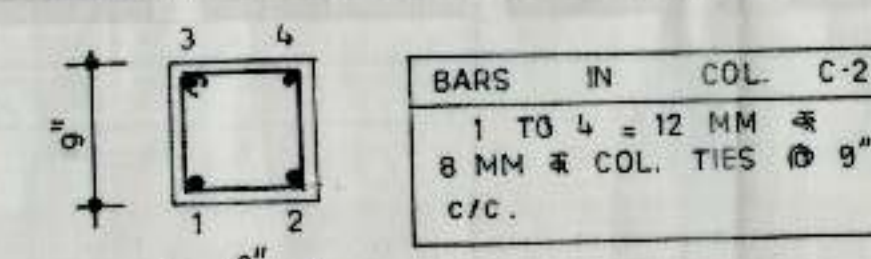


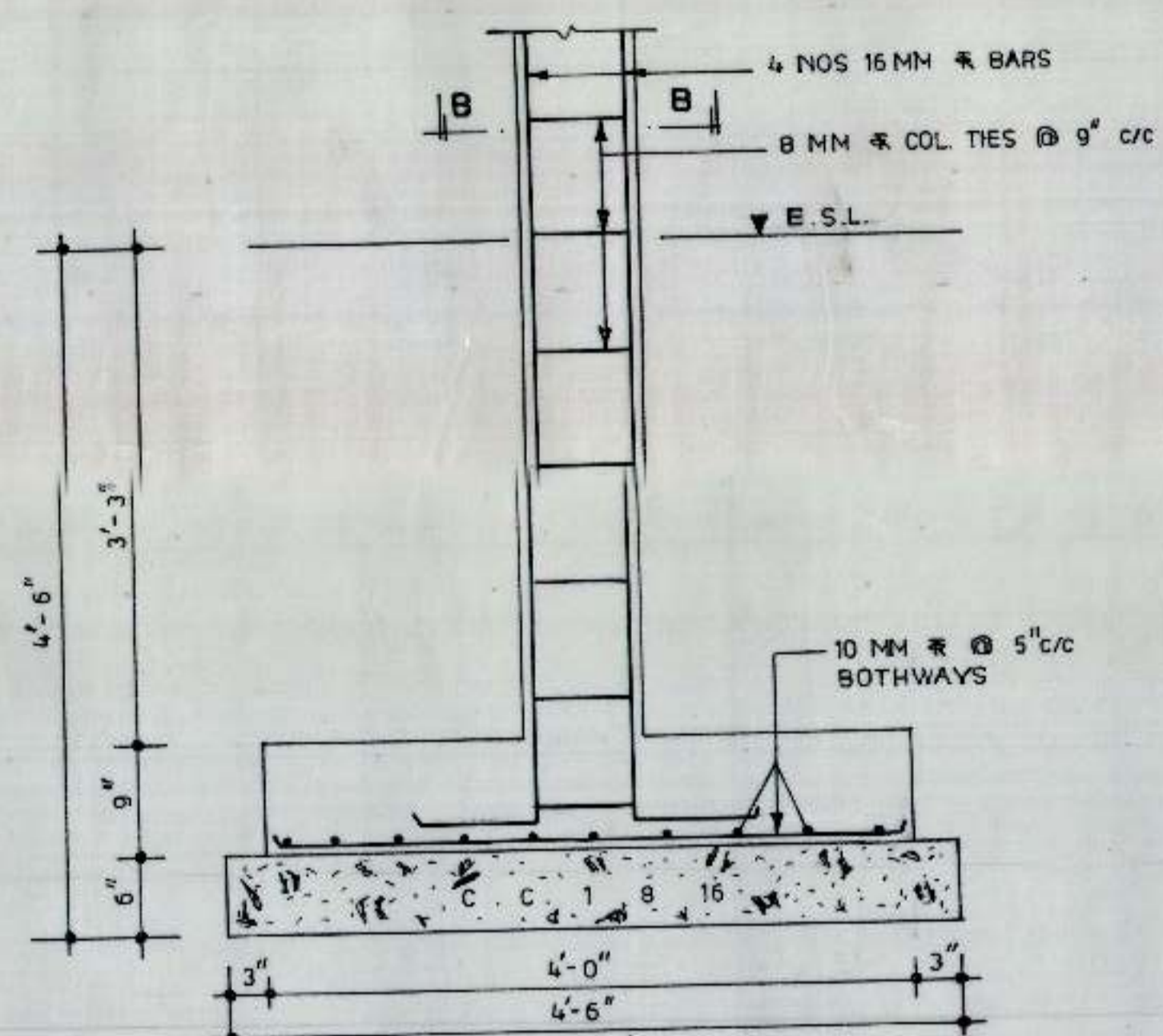
KEY PLAN (FOUNDATION)



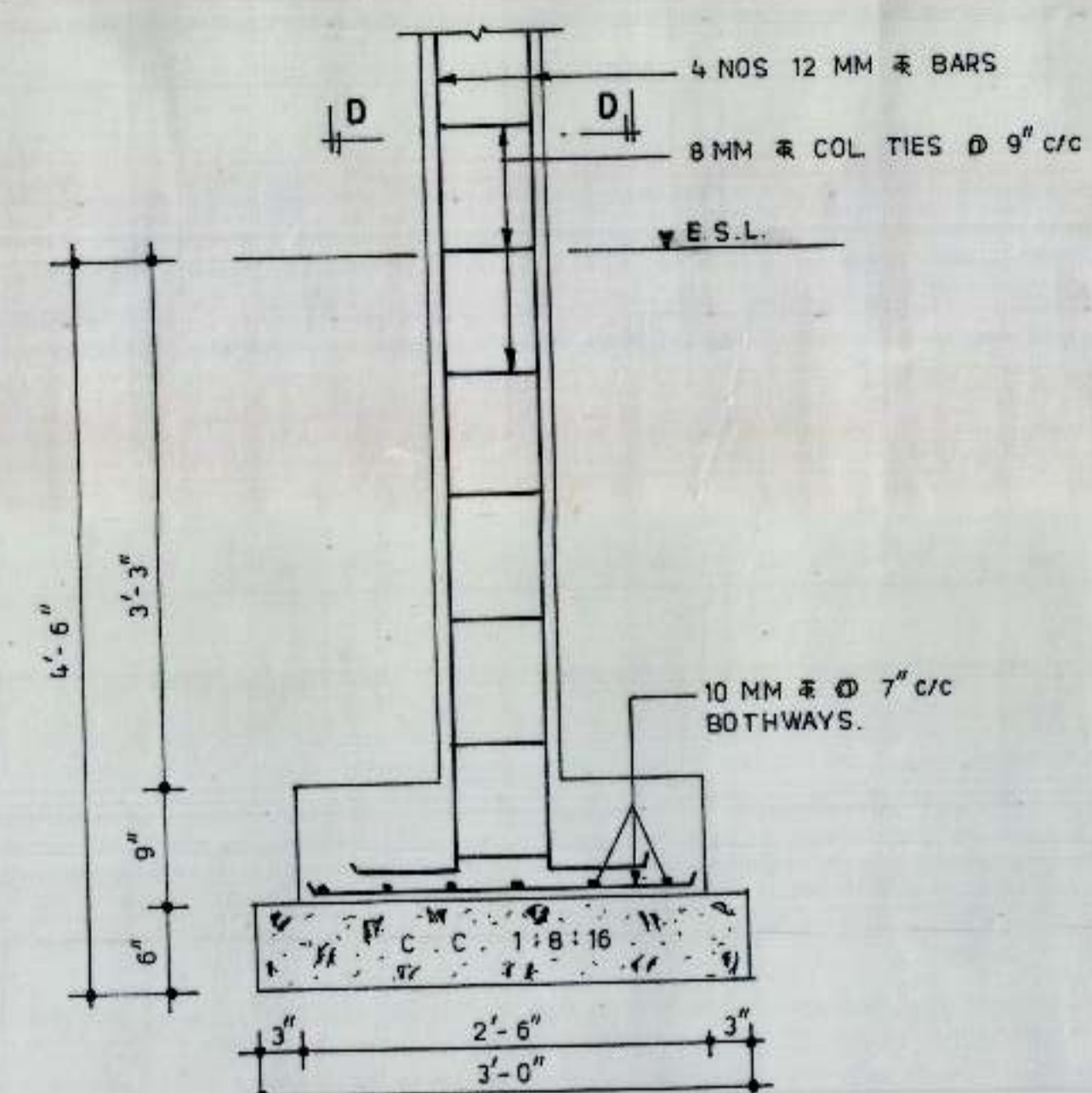
SECTION B - B
(UP-TO TERRACE LEVEL)



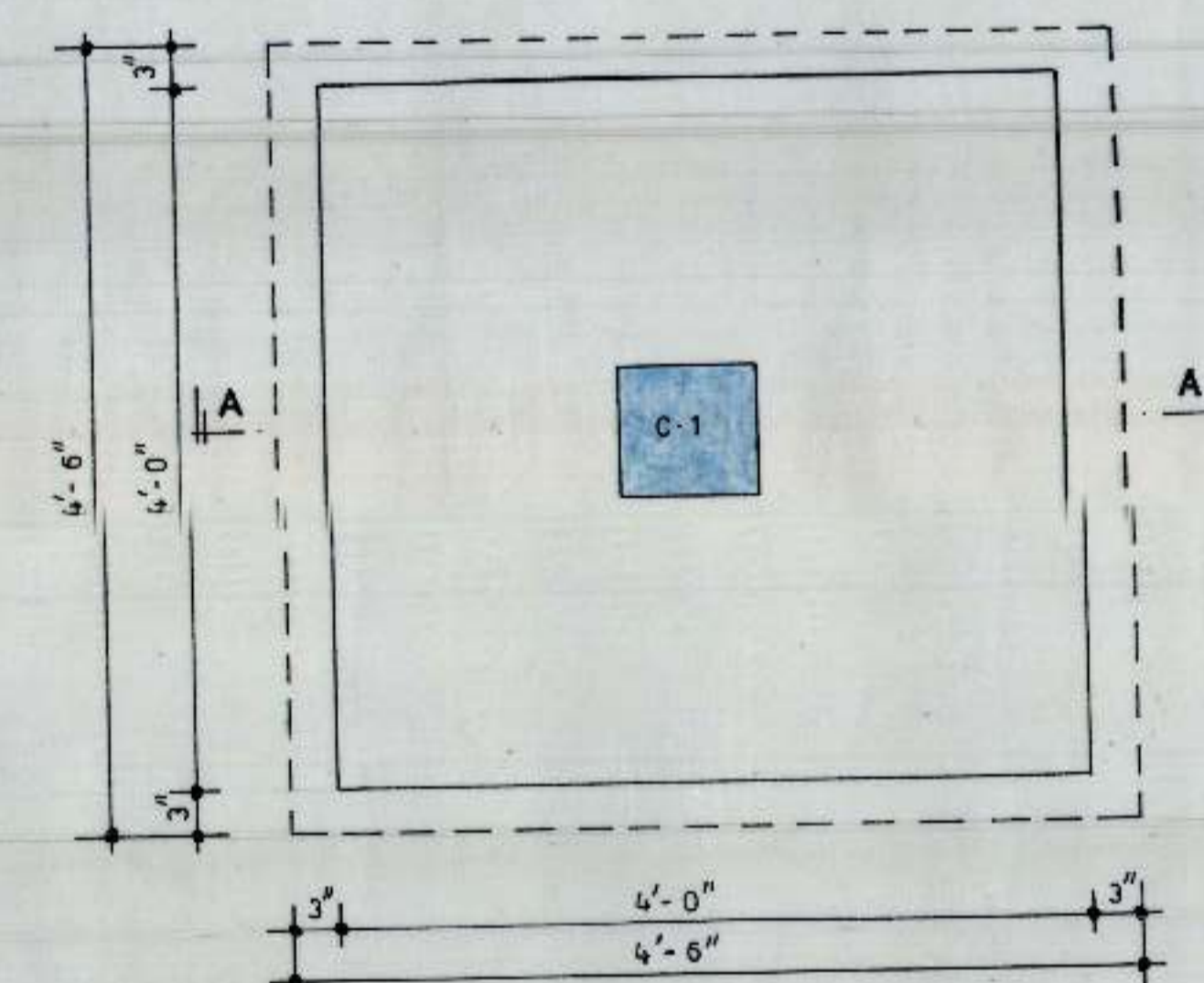
SECTION D - D
(UP-TO GROUND LEVEL)



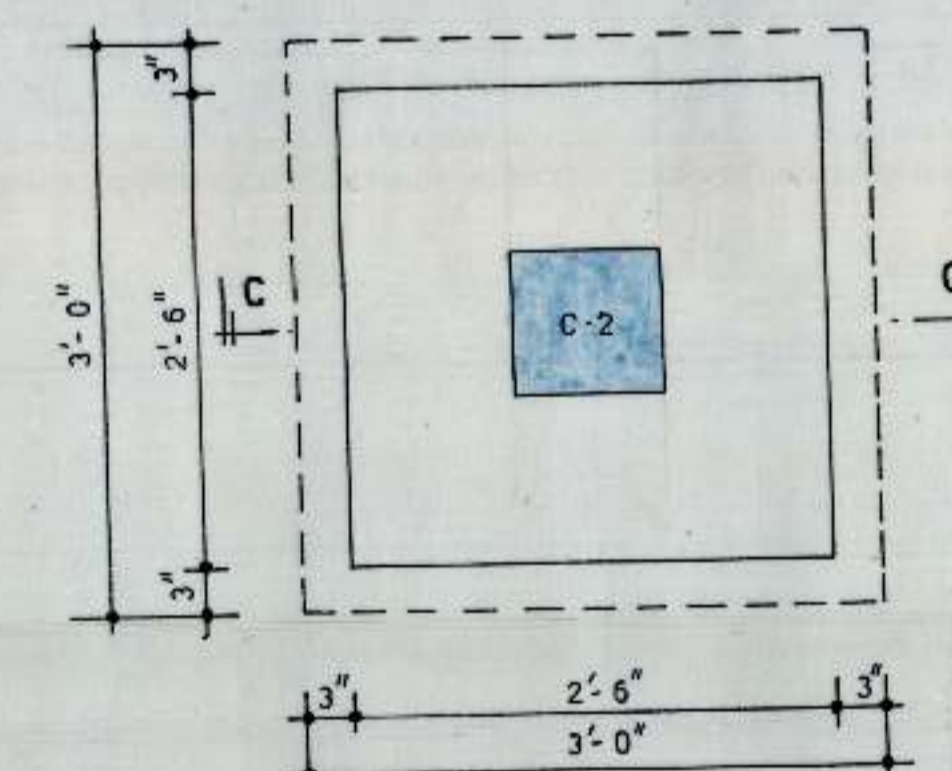
SECTION A - A



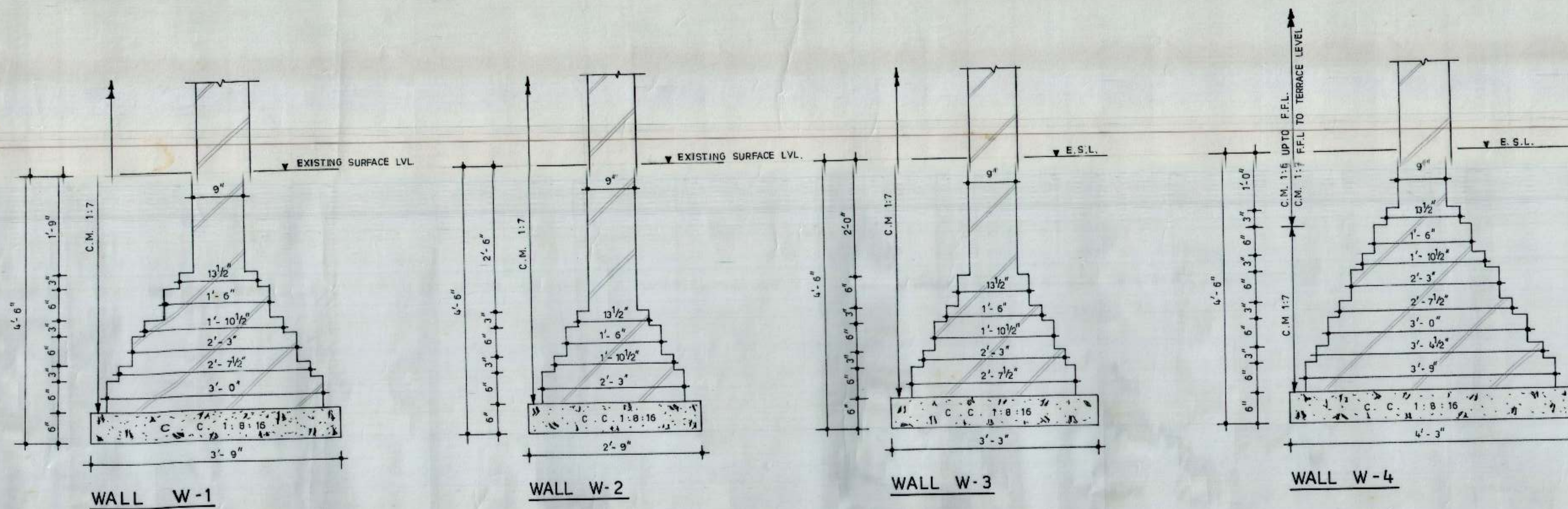
SECTION C - C



PLAN OF COLUMN C-1



PLAN OF COLUMN C-2



WALL W-1

WALL W-2

WALL W-3

WALL W-4

NOTES :-

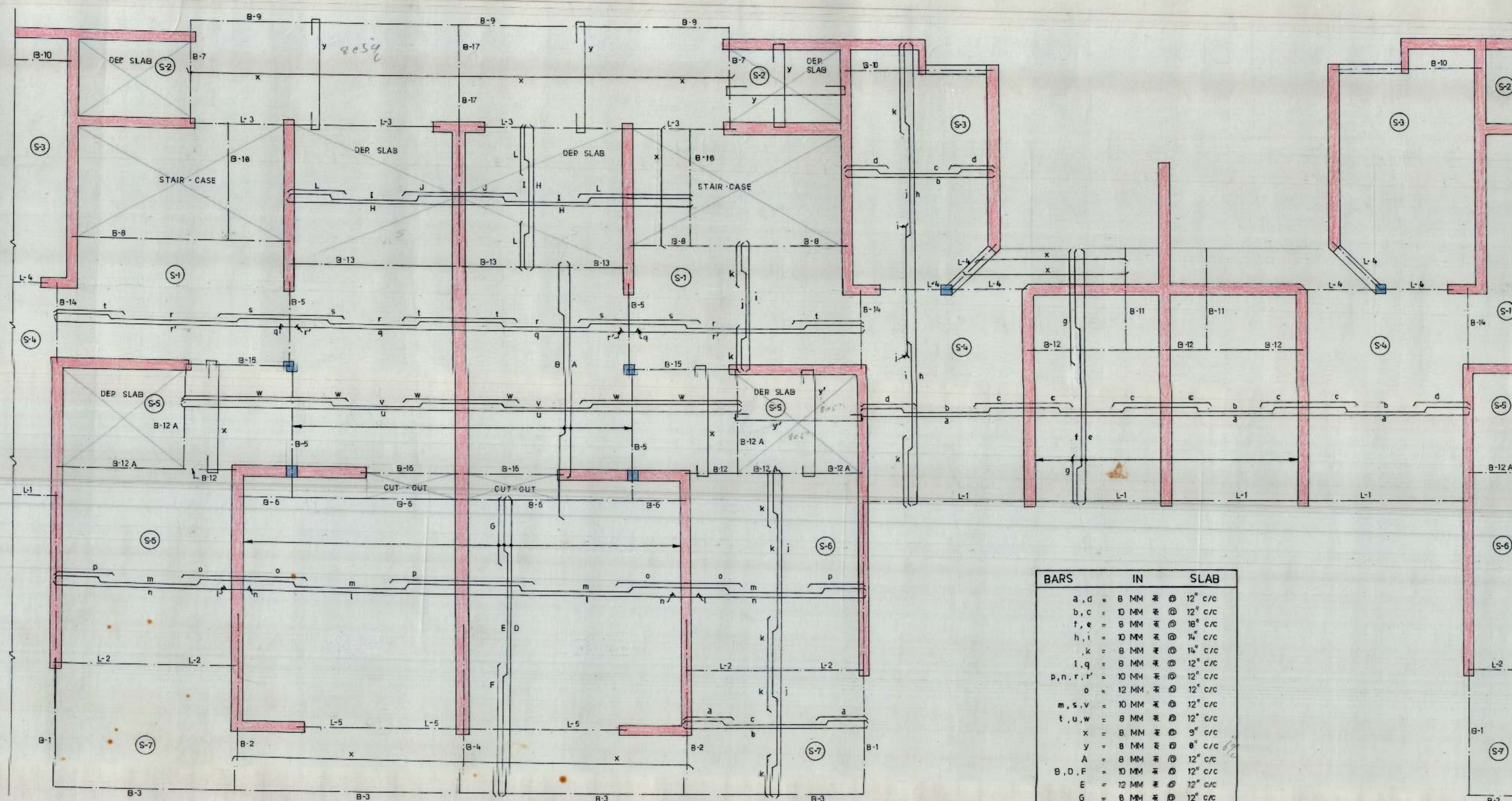
1. THE CENTER LINE DIMENSIONS REFER TO ARCH. DRG NO. 2, JOB NO. 2498.
2. SUITABLE D.P.C. MAY BE PROVIDED AT SITE.
3. STRUCTURAL SIZES ARE SHOWN IN THIS DRG SHOULD BE ADOPTED INSPIE OF ANY CONTRARY SIZES SHOWN IN THIS ARCH. DRAWING.
4. DIMENSION ARE TO BE READ AND NOT TO BE SCALED OFF.
5. THE SAFE BEARING CAPACITY OF SOIL HAS BEEN ASSUMED AS 10.6 T/M² AT THE DEPTH OF 1.35 M FROM EXISTING SURFACE LEVEL.
6. THE CUBE STRENGTH OF CONC. CURED AT SITE AFTER 28 DAYS SHALL NOT BE LESS THAN 2250 LBS/FT² (MIN).
7. JAMES OF ALL WALLS TO BE BUILT IN C.M. 1:4.
8. LEAN CONCRETE 1:8:16 SHALL BE LAID WITH MECHANICAL MIXTURE.

CHANDIGARH
HOUSING BOARD

TITLE :-
DETAILS OF FOUNDATION

SCALE :- 1" = 1'-0"	CHECKED BY :-
DEALT BY :-	DATED :- SEPT, 1994
JOB NO. :- HS	DRG NO. :- 01

M.S.T. CONSULTANTS
S.C.F. 23, SECTOR 16
CHANDIGARH



- NOTES
1. USE M:15 CONCRETE.
 2. USE TOR STEEL OF GRADE FE-415 CONFORMING TO I.S. 1786.
 3. PROVIDE 9" BEARING FOR BEAMS ON WALLS PLASTERED ON BOTH SIDES AND 5 3/4" ON WALLS WITH BRICK FACE ON ONE SIDE.
 4. FOR OTHER STRUCTURAL NOTES REFER DRG NO 01, JOB NO. HEX.

BARS	IN	SLAB
a, d	8 MM	@ 12" c/c
b, c	10 MM	@ 12" c/c
f, e	8 MM	@ 18" c/c
h, i	10 MM	@ 14" c/c
k	8 MM	@ 14" c/c
l, q	8 MM	@ 12" c/c
p, n, r, r'	10 MM	@ 12" c/c
o	12 MM	@ 12" c/c
m, s, v	10 MM	@ 12" c/c
t, u, w	8 MM	@ 12" c/c
x	8 MM	@ 9" c/c
y	8 MM	@ 8" c/c
A	8 MM	@ 12" c/c
B, D, F	10 MM	@ 12" c/c
E	12 MM	@ 12" c/c
G	8 MM	@ 12" c/c
H, I, J	10 MM	@ 11" c/c
L	8 MM	@ 11" c/c
g	12 MM	@ 18" c/c
j	10 MM	@ 14" c/c
y'	10 MM	@ 7" c/c

KEY PLAN (FIRST FLOOR SLAB)
NOTE - SLAB 4 1/2" THICK THROUGHOUT, UNLESS OTHERWISE SPECIFIED.

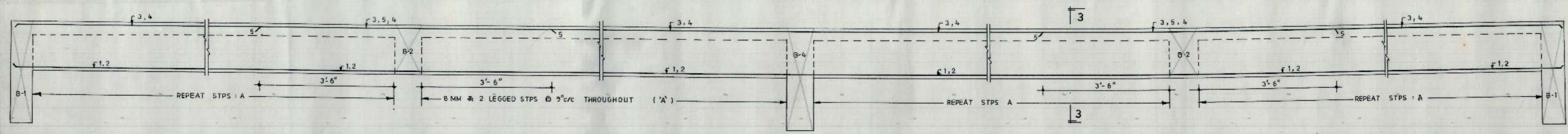
CHANDIGARH HOUSING BOARD

TITLE :
DETAILS OF SLAB AND BEAMS REINFORCEMENT AT FIRST FLOOR LEVEL.

SCALE :
DEALT BY :
JOB NO :
CHECKED BY :
DATED :
DRG NO : 02

M.S.T. CONSULTANTS
S.C.F 23, SECTOR - 16
CHANDIGARH

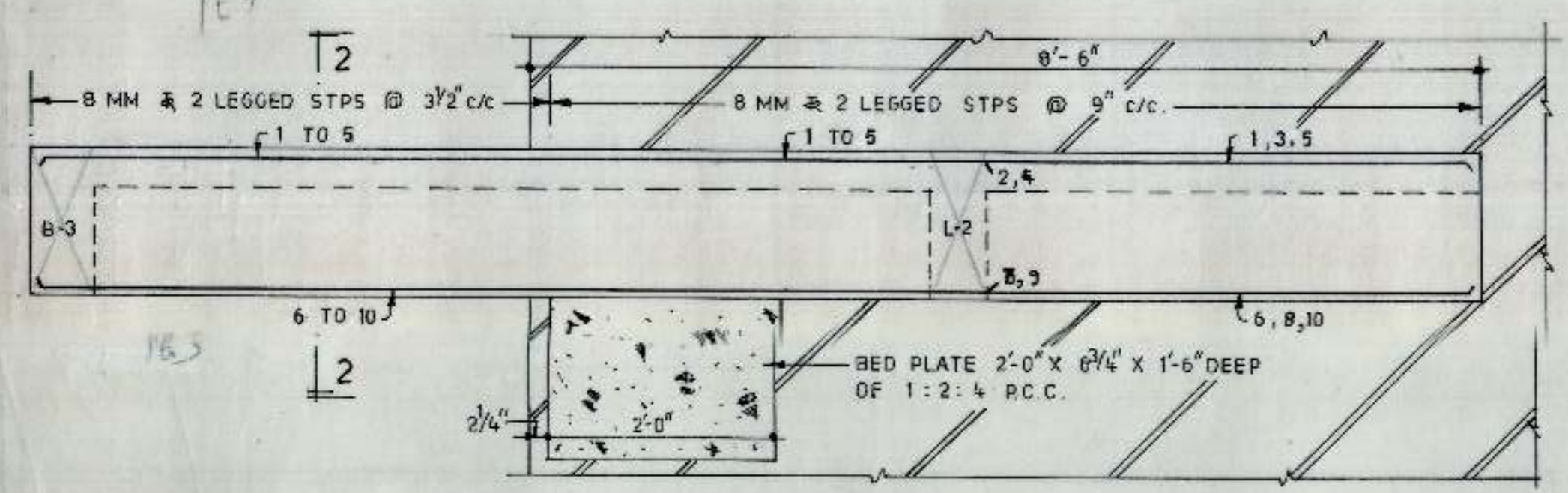
NOTES
1. FOR STRUCTURAL NOTES REFER DRG NO 02, JOB NO. HEX.



BEAM B-3

SECTION 3-3

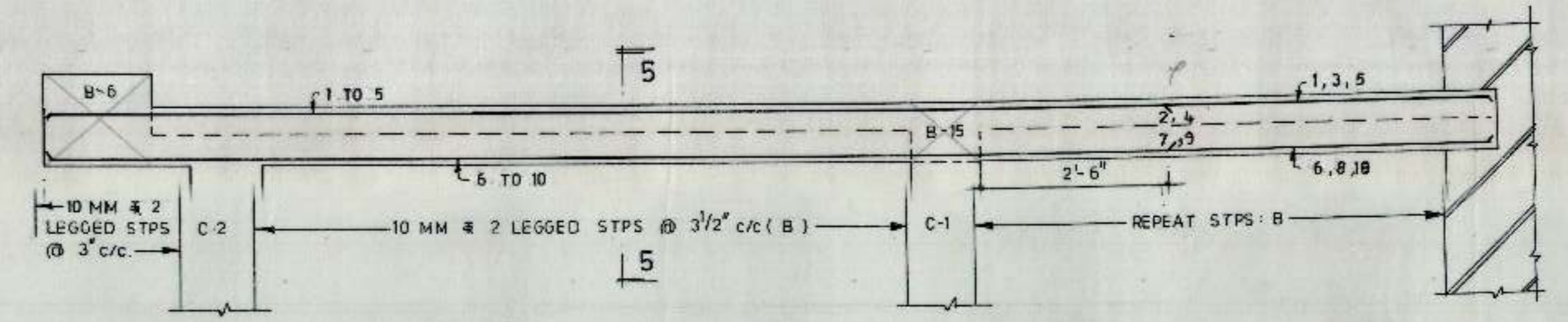
BARS IN BEAM B-3	
1 TO 4	= 16 MM Φ
5	= 12 MM Φ



BEAM B-2

SECTION 2-2

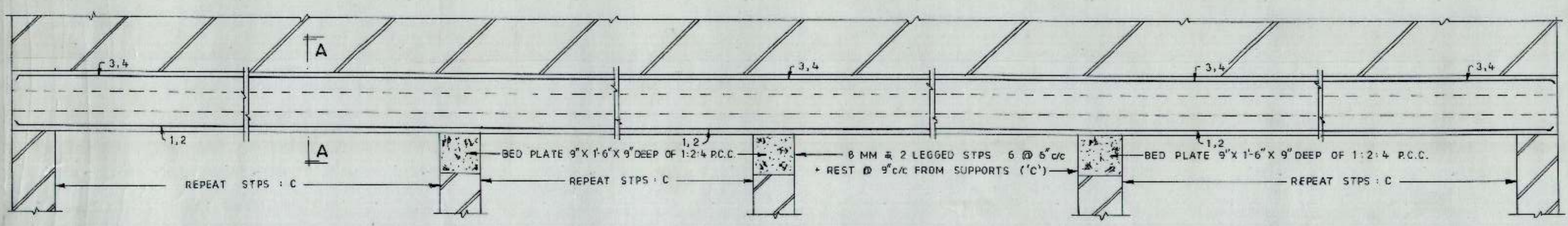
BARS IN BEAM B-2	
1 TO 10	= 20 MM Φ



BEAM B-5

SECTION 5-5

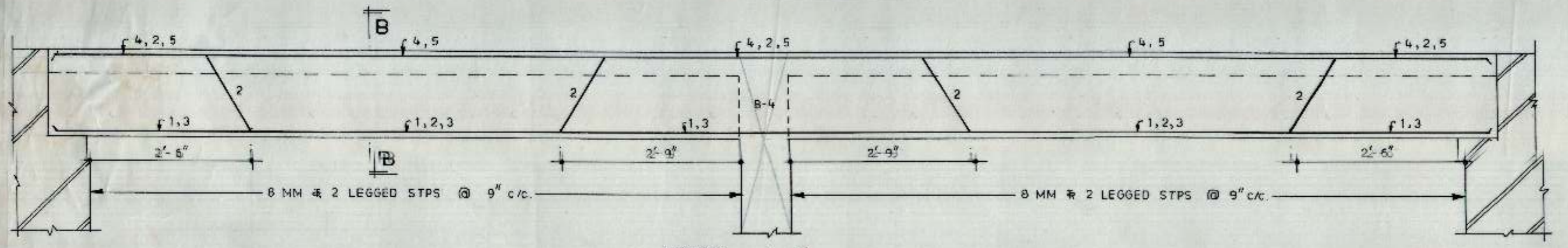
BARS IN BEAM B-5	
1 TO 10	= 20 MM Φ



LINTEL L-1

SECTION A-A

BARS IN LINTEL L-1	
1 TO 4	= 20 MM Φ



LINTEL L-5

SECTION B-B

BARS IN LINTEL L-5	
1 TO 5	= 12 MM Φ

SECTION 1-1

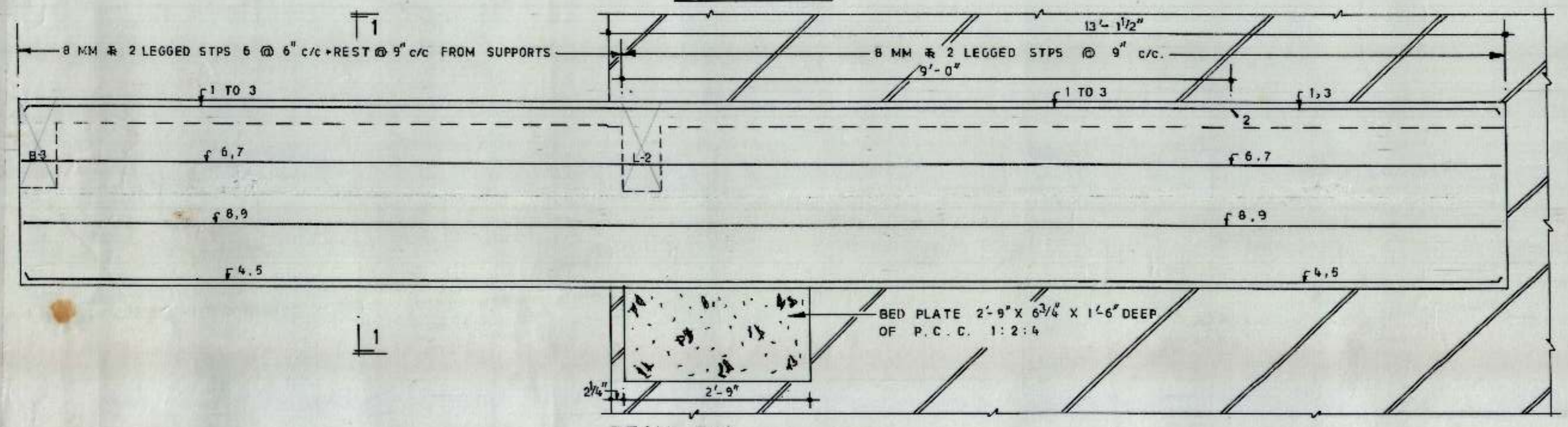
BARS IN BEAM B-17	
1 TO 7	= 20 MM Φ
9 TO 11	= 10 MM Φ

STPS: 8 MM Φ 2 LEGGED @ 6" c/c IN CANTILEVER + 8 MM Φ 2 LEGGED @ 9" c/c IN BACK SPAN.
BED PLATE: 2'-3" X 9" X 1'-6" DEEP OF 1:2:4 P.C.C.
ANCHORAGE LENGTH: 10'-10 1/2"

SECTION 1-1

BARS IN BEAM B-17A	
1, 2	= 16 MM Φ
3, 4, 5	= 20 MM Φ
6 TO 9	= 10 MM Φ

STPS: 8 MM Φ 2 LEGGED @ 6" c/c IN CANTILEVER + 8 MM Φ 2 LEGGED @ 9" c/c IN BACK SPAN.
BED PLATE: 1'-9" X 9" X 1'-3" DEEP OF 1:2:4 P.C.C.
ANCHORAGE LENGTH: 10'-10 1/2"



BEAM B-1

SECTION 1-1

BARS IN BEAM B-1	
1 TO 3	= 20 MM Φ
4, 5	= 16 MM Φ
6, 7, 8, 9	= 10 MM Φ

SECTION 1-1

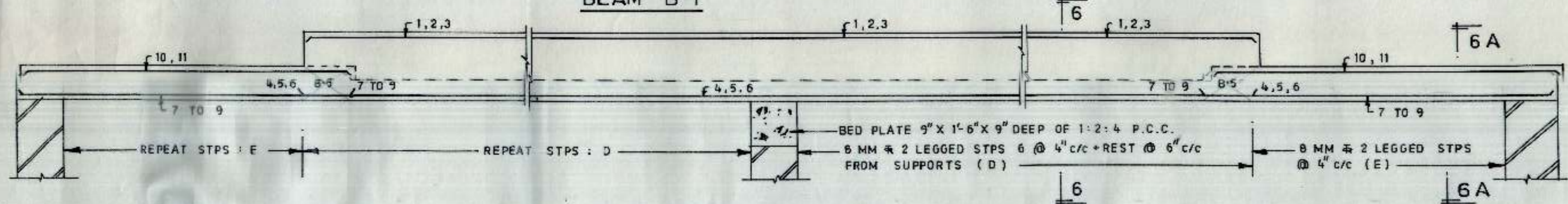
BARS IN BEAM B-4	
1, 2	= 12 MM Φ
3, 4	= 20 MM Φ
5 TO 8	= 10 MM Φ

STPS: 8 MM Φ 2 LEGGED @ 9" c/c
BED PLATE: 1'-6" X 9" X 9" DEEP OF 1:2:4 P.C.C.
BEAM ANCHORAGE LENGTH = 9'-0"

SECTION 1-1

BARS IN BEAM B-4A	
1, 2	= 12 MM Φ
3, 4	= 16 MM Φ
5 TO 8	= 10 MM Φ

STPS: 8 MM Φ 2 LEGGED @ 9" c/c
BED PLATE: 1'-3" X 9" X 9" DEEP OF 1:2:4 P.C.C.
ANCHORAGE LENGTH = 8'-0"



BEAM B-6

SECTION 6-6

BARS IN BEAM B-6	
1 TO 6	= 20 MM Φ
7 TO 11	= 12 MM Φ

SECTION 6A-6A

BARS IN BEAM B-6	
1 TO 6	= 20 MM Φ
7 TO 11	= 12 MM Φ

SECTION 6A-6A

BARS IN BEAM B-4A	
1, 2	= 12 MM Φ
3, 4	= 16 MM Φ
5 TO 8	= 10 MM Φ

STPS: 8 MM Φ 2 LEGGED @ 9" c/c
BED PLATE: 1'-3" X 9" X 9" DEEP OF 1:2:4 P.C.C.
ANCHORAGE LENGTH = 8'-0"

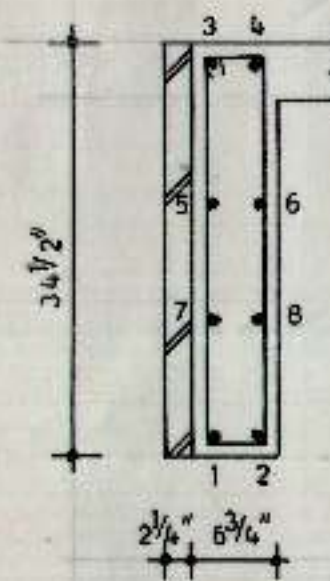
CHANDIGARH HOUSING BOARD

TITLE: DETAILS OF BEAMS REINF. OF FIRST FLOOR LEVEL.

SCALE:	CHECKED BY:
DEALT BY:	DATED:
JOB NO. HEX	DRG NO. 03

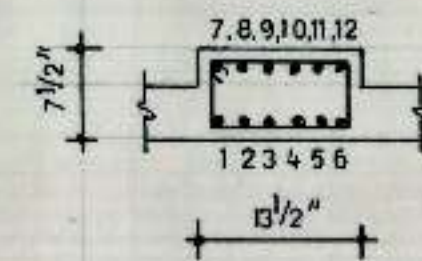
M.S.T. CONSULTANTS
S.C.F. 23, SECTOR - 16
CHANDIGARH

NOTES :-
1. FOR STRUCTURAL NOTES REFER DRG NO. 01, JOB NO. HEX.



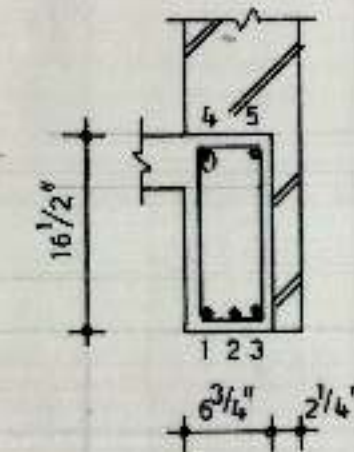
BEAM B-7

BARS IN BEAM B-7	
1 TO 4 = 12 MM Φ	
5 TO 8 = 10 MM Φ	
STPS : 8 MM Φ 2 LEGGED @ 9" c/c.	



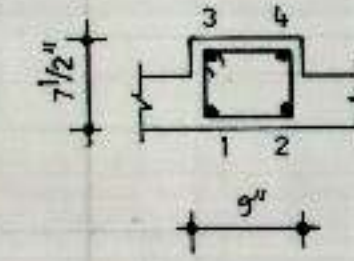
BEAM B-8

BARS IN BEAM B-8	
1 TO 12 = 20 MM Φ	
STPS : 8 MM Φ 2 LEGGED @ 16 @ 3" c/c + REST @ 4 1/2" c/c FROM SUPPORTS.	



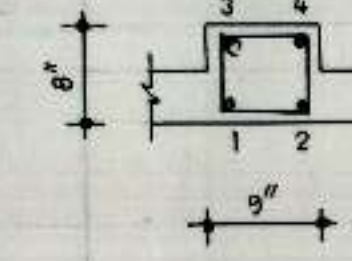
BEAM B-9

BARS IN BEAM B-9	
1 TO 3 = 20 MM Φ	
4, 5 = 12 MM Φ	
CRANK BAR 2 AT 3'-6" FROM SUPPORTS.	
STPS : 8 MM Φ 2 LEGGED @ 6 @ 6" c/c + REST @ 9" c/c FROM SUPPORTS.	



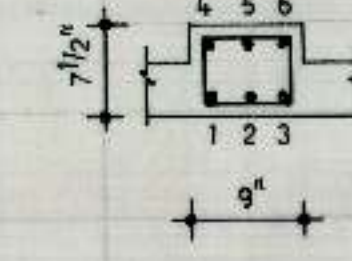
BEAM B-10

BARS IN BEAM B-10	
1 TO 4 = 16 MM Φ	
STPS : 8 MM Φ 2 LEGGED @ 5" c/c.	



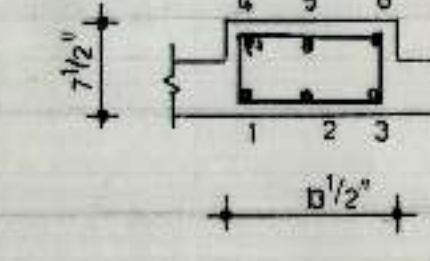
BEAM B-11 & B-15

BARS IN BEAM B-11 & B-15	
1 TO 4 = 16 MM Φ	
STPS : 8 MM Φ 2 LEGGED @ 4" c/c.	



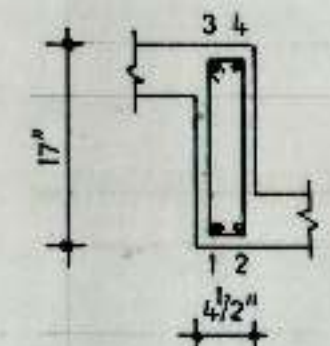
BEAM B-12

BARS IN BEAM B-12	
1, 3, 4, 6 = 12 MM Φ	
2, 5 = 16 MM Φ	
STPS : 8 MM Φ 2 LEGGED @ 4 1/2" c/c.	



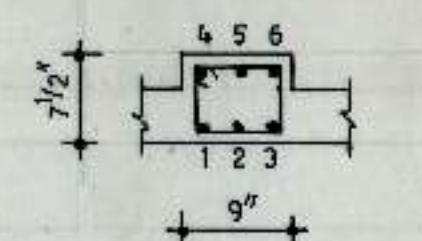
BEAM B-18

BARS IN BEAM B-18	
1 TO 6 = 20 MM Φ	
STPS : 8 MM Φ 2 LEGGED @ 4" c/c.	



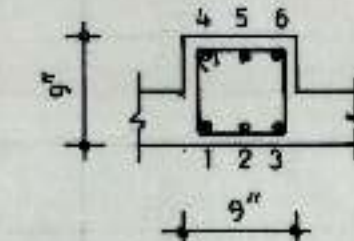
BEAM B-12 A

BARS IN BEAM B-12 A	
1 TO 4 = 12 MM Φ	
STPS : 8 MM Φ 2 LEGGED @ 9" c/c.	



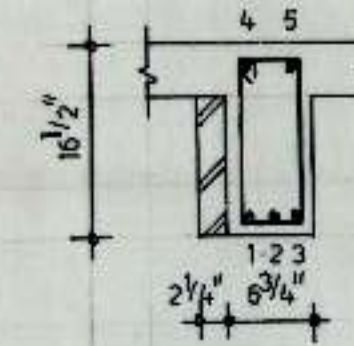
BEAM B-14

BARS IN BEAM B-14	
1 TO 6 = 12 MM Φ	
STPS : 8 MM Φ 2 LEGGED @ 6" c/c.	



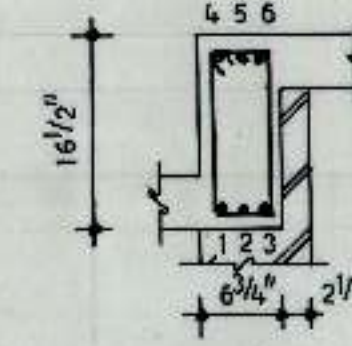
BEAM B-16

BARS IN BEAM B-16	
1 TO 6 = 12 MM Φ	
STPS : 8 MM Φ 2 LEGGED @ 6" c/c.	



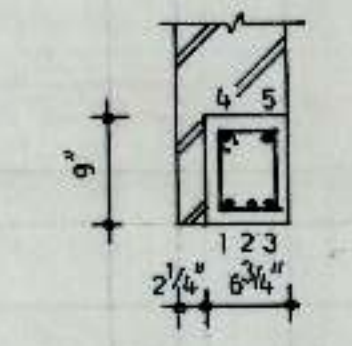
LINTEL L-2

BARS IN LINTEL L-2	
1 TO 3 = 20 MM Φ	
4, 5 = 16 MM Φ	
CRANK BAR 2 AT 3'-3" FROM SUPPORTS.	
STPS : 8 MM Φ 2 LEGGED @ 6 @ 6" c/c + REST @ 9" c/c FROM SUPPORTS.	



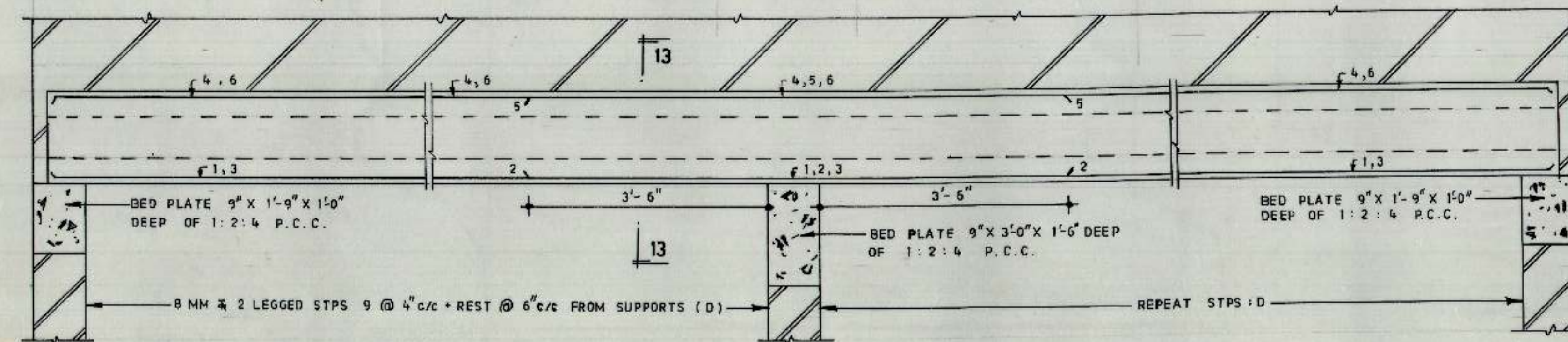
LINTEL L-3

BARS IN LINTEL L-3	
1, 3, 4, 6 = 20 MM Φ	
2, 5 = 16 MM Φ	
STPS : 8 MM Φ 2 LEGGED @ 4 @ 4 1/2" c/c + 4 @ 6" c/c + REST @ 9" c/c FROM SUPPORTS.	
BED PLATE 3'-0" X 9 1/4" X 1'-6" DEEP OF 1:2:4 P.C.C.	

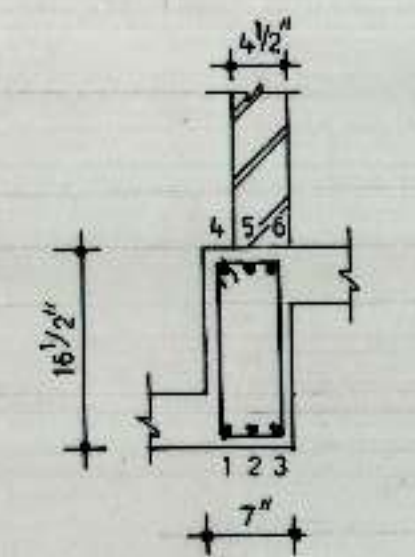


LINTEL L-4

BARS IN LINTEL L-4	
1 TO 5 = 12 MM Φ	
STPS : 8 MM Φ 2 LEGGED @ 4 1/2" c/c.	



BEAM B-13



SECTION 13-13

BARS IN BEAM B-13	
1 TO 6 = 20 MM Φ	

CHANDIGARH HOUSING BOARD

TITLE :-
DETAILS OF BEAMS REINF. OF FIRST FLOOR LEVEL.

SCALE :-
DEALT BY :-

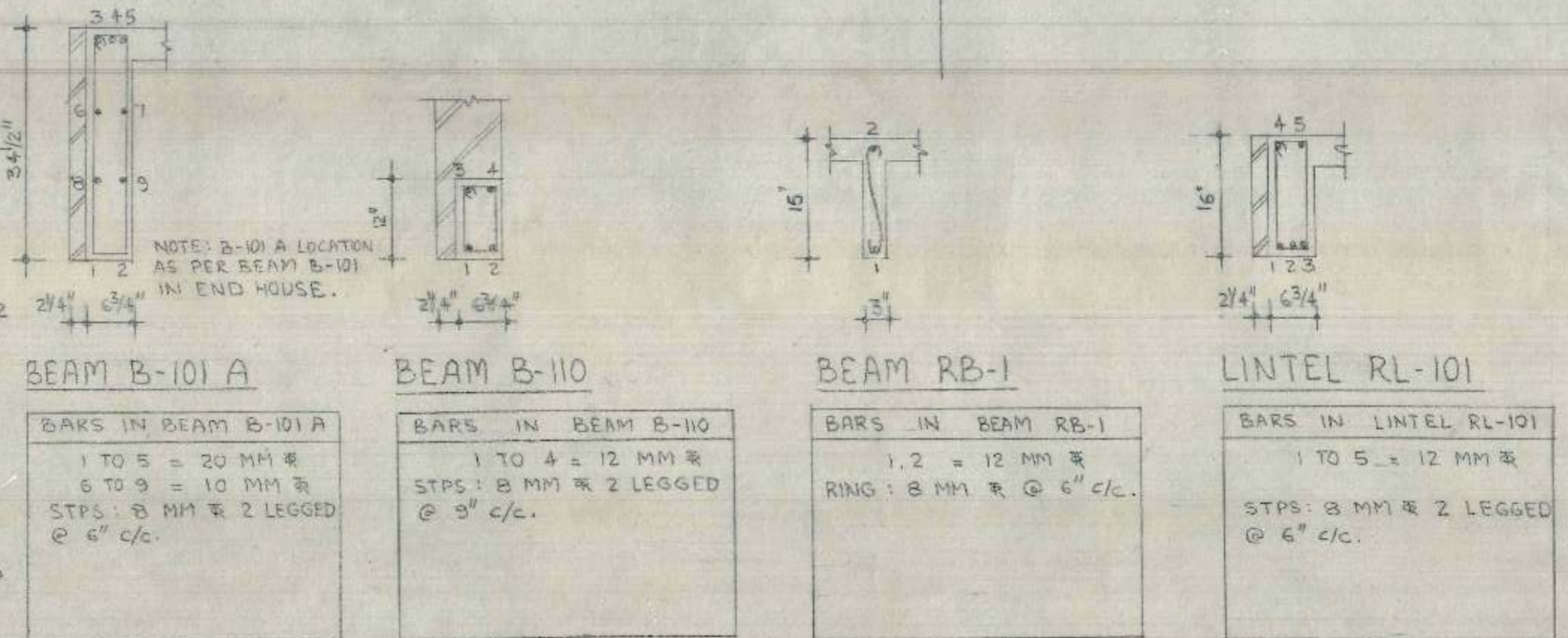
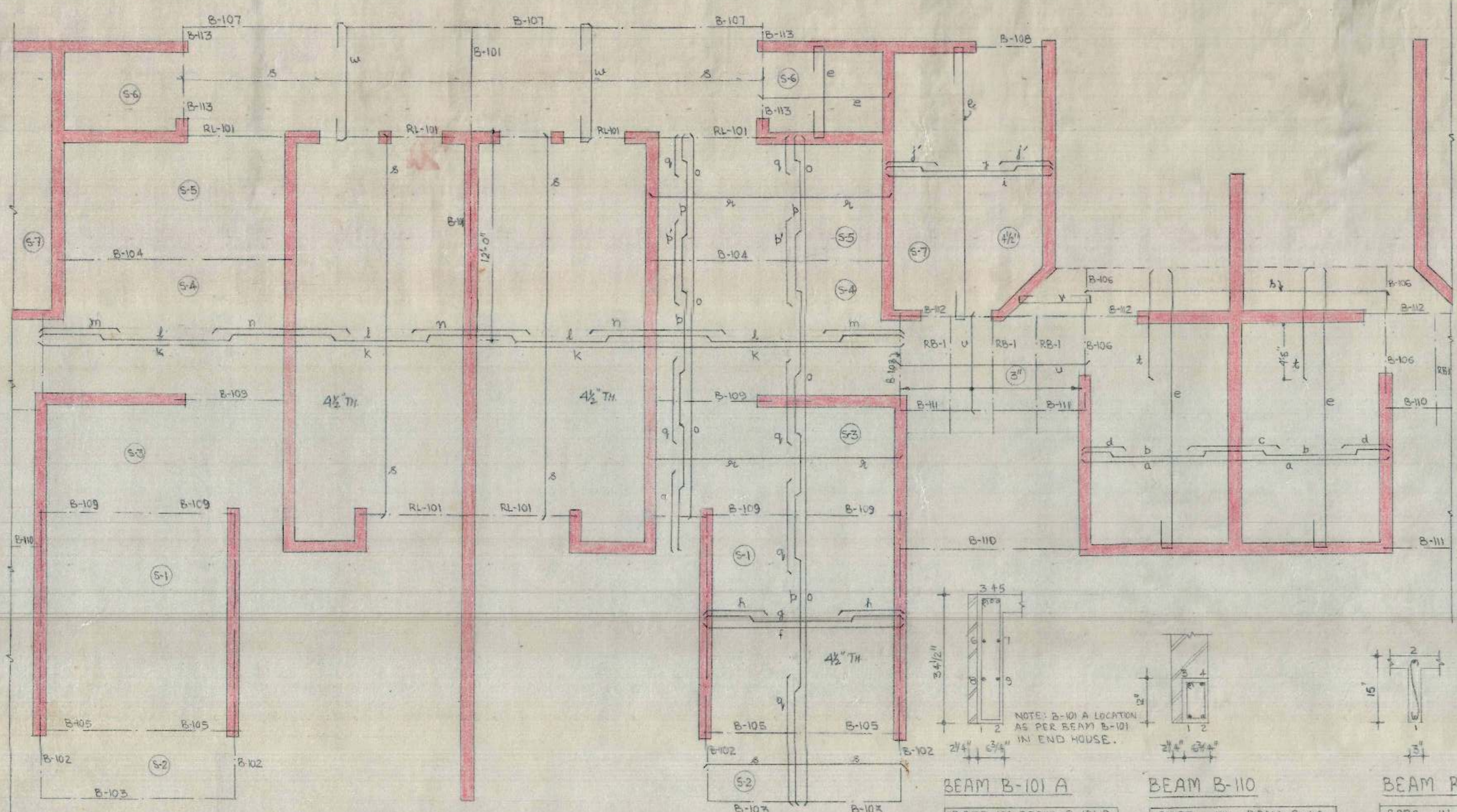
CHECKED BY :-
DATED :-

JOB NO. 1: HEX DRG NO. 04

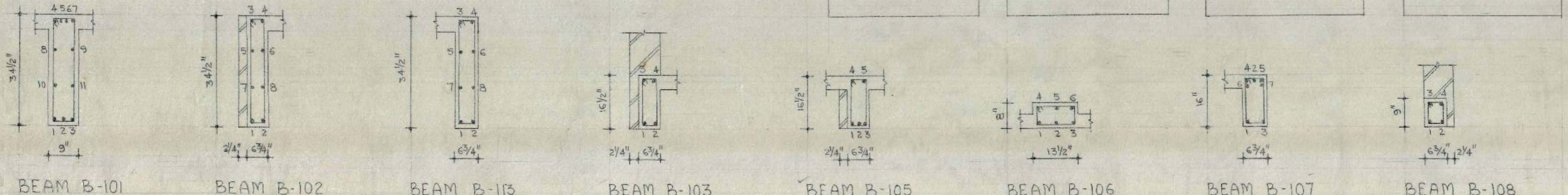
M.S.T. CONSULTANTS
S.C.F. 23, SECTOR - 16
CHANDIGARH

BARS IN SLAB	
a, c, d, i, j	= 8 MM $\bar{\#}$ @ 10" c/c
b, g	= 10 MM $\bar{\#}$ @ 10" c/c
e	= 8 MM $\bar{\#}$ @ 8" c/c
h	= 8 MM $\bar{\#}$ @ 12" c/c
g	= 10 MM $\bar{\#}$ @ 12" c/c
o, q	= 8 MM $\bar{\#}$ @ 15" c/c
p, b'	= 10 MM $\bar{\#}$ @ 15" c/c
s	= 8 MM $\bar{\#}$ @ 9" c/c
t	= 10 MM $\bar{\#}$ @ 6" c/c
u	= 8 MM $\bar{\#}$ @ 6" c/c
v	= 10 MM $\bar{\#}$ @ 7" c/c
w	= 8 MM $\bar{\#}$ @ 5" c/c
x, m	= 8 MM $\bar{\#}$ @ 12" c/c
f, l, n	= 10 MM $\bar{\#}$ @ 12" c/c

NOTES:
1. FOR STRUCTURAL NOTES REFER DRG NO. 01.02.JOB NO. HEX.



KEY PLAN
NOTE: SLAB 4" THICK THROUGHOUT, UNLESS OTHERWISE SPECIFIED.



BEAM B-101
BARS IN BEAM B-101
1 TO 7 = 20 MM $\bar{\#}$
8 TO 11 = 10 MM $\bar{\#}$
STPS: 8 MM $\bar{\#}$ 2 LEGGED @ 6" c/c IN CANTILEVER + 8 MM $\bar{\#}$ 2 LEGGED @ 9" c/c IN BACK SPAN.

BEAM B-102
BARS IN BEAM B-102
1 TO 4 = 16 MM $\bar{\#}$
5 TO 8 = 10 MM $\bar{\#}$
BED PLATE: 1'-6" X 6 3/4" X 1'-0" DEEP OF P.C.C. 1'-2"-4"
STPS: 8 MM $\bar{\#}$ 2 LEGGED @ 9" c/c IN CANTILEVER + 8 MM $\bar{\#}$ 2 LEGGED @ 9" c/c IN BACK SPAN.

BEAM B-113
BARS IN BEAM B-113
1, 2 = 12 MM $\bar{\#}$
3, 4 = 16 MM $\bar{\#}$
5 TO 8 = 10 MM $\bar{\#}$
STPS: 8 MM $\bar{\#}$ 2 LEGGED @ 9" c/c.

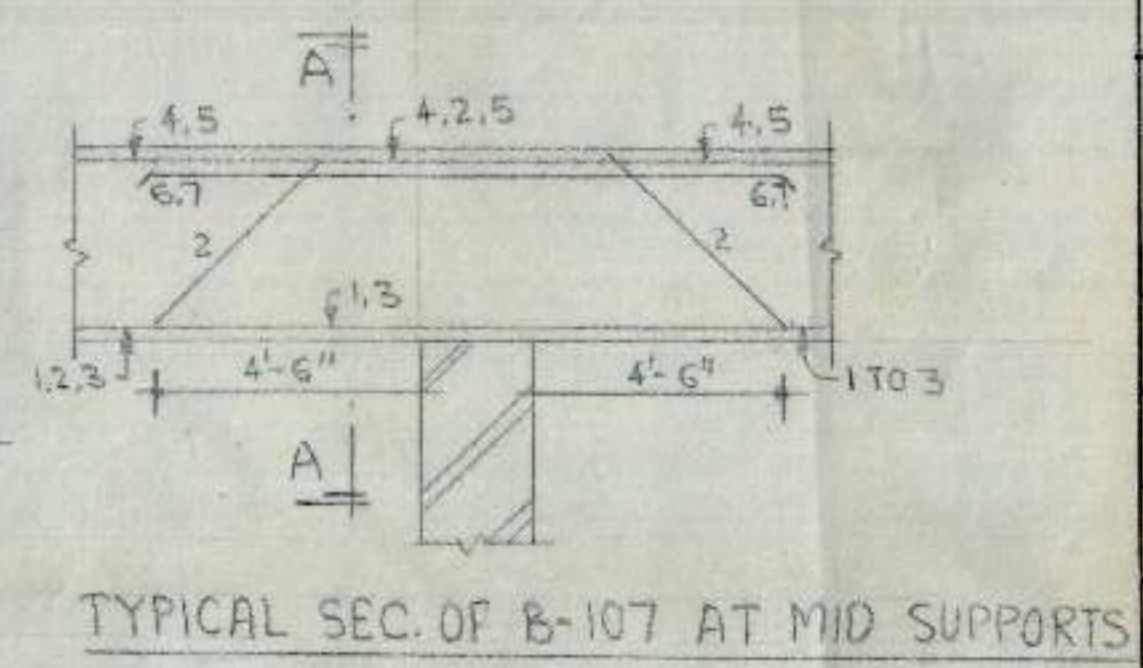
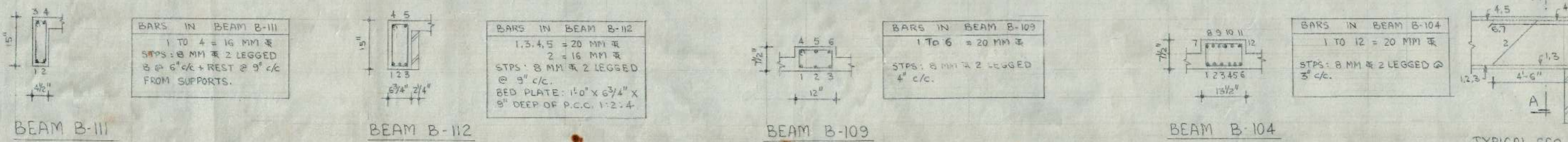
BEAM B-103
BARS IN BEAM B-103
1, 2 = 20 MM $\bar{\#}$
3, 4 = 12 MM $\bar{\#}$
STPS: 8 MM $\bar{\#}$ 2 LEGGED @ 9" c/c.

BEAM B-105
BARS IN BEAM B-105
1, 3 = 20 MM $\bar{\#}$
2 = 16 MM $\bar{\#}$
4, 5 = 12 MM $\bar{\#}$
CRANK BAR 2 AT 3'-6" FROM SUPPORTS.
BED PLATE: 1'-6" X 6 3/4" X 1'-0" DEEP OF 1:2:4 P.C.C.
STPS: 8 MM $\bar{\#}$ 2 LEGGED 4 @ 6" c/c + REST @ 9" c/c FROM SUPPORTS

BEAM B-106
BARS IN BEAM B-106
1, 3, 4, 6 = 12 MM $\bar{\#}$
2, 5 = 16 MM $\bar{\#}$
PROVIDE BED PLATE 1'-0" X 9" X 6" DEEP OF 1:2:4 P.C.C.
STPS: 8 MM $\bar{\#}$ 2 LEGGED @ 4 1/2" c/c.

BEAM B-107 (SECTION A-A)
BARS IN BEAM B-107
1 TO 3 = 20 MM $\bar{\#}$
4 TO 7 = 16 MM $\bar{\#}$
CRANK BAR 2 AT 4'-6" FROM SUPPORTS.
STPS: 8 MM $\bar{\#}$ 2 LEGGED 6 @ 6" c/c + REST @ 9" FROM SUPPORTS.

BEAM B-108
BARS IN BEAM B-108
1 TO 4 = 12 MM $\bar{\#}$
STPS: 8 MM $\bar{\#}$ 2 LEGGED @ 6" c/c.



CHANDIGARH HOUSING BOARD

TITLE: DETAILS OF SLAB & BEAMS AT TERRACE LEVEL.

SCALE: CHECKED BY: DEALT BY: DATED: JOB NO.: HEX DRG NO.: 05

M.S.T. CONSULTANTS
S.C.F. 23, SECTOR - 16
CHANDIGARH