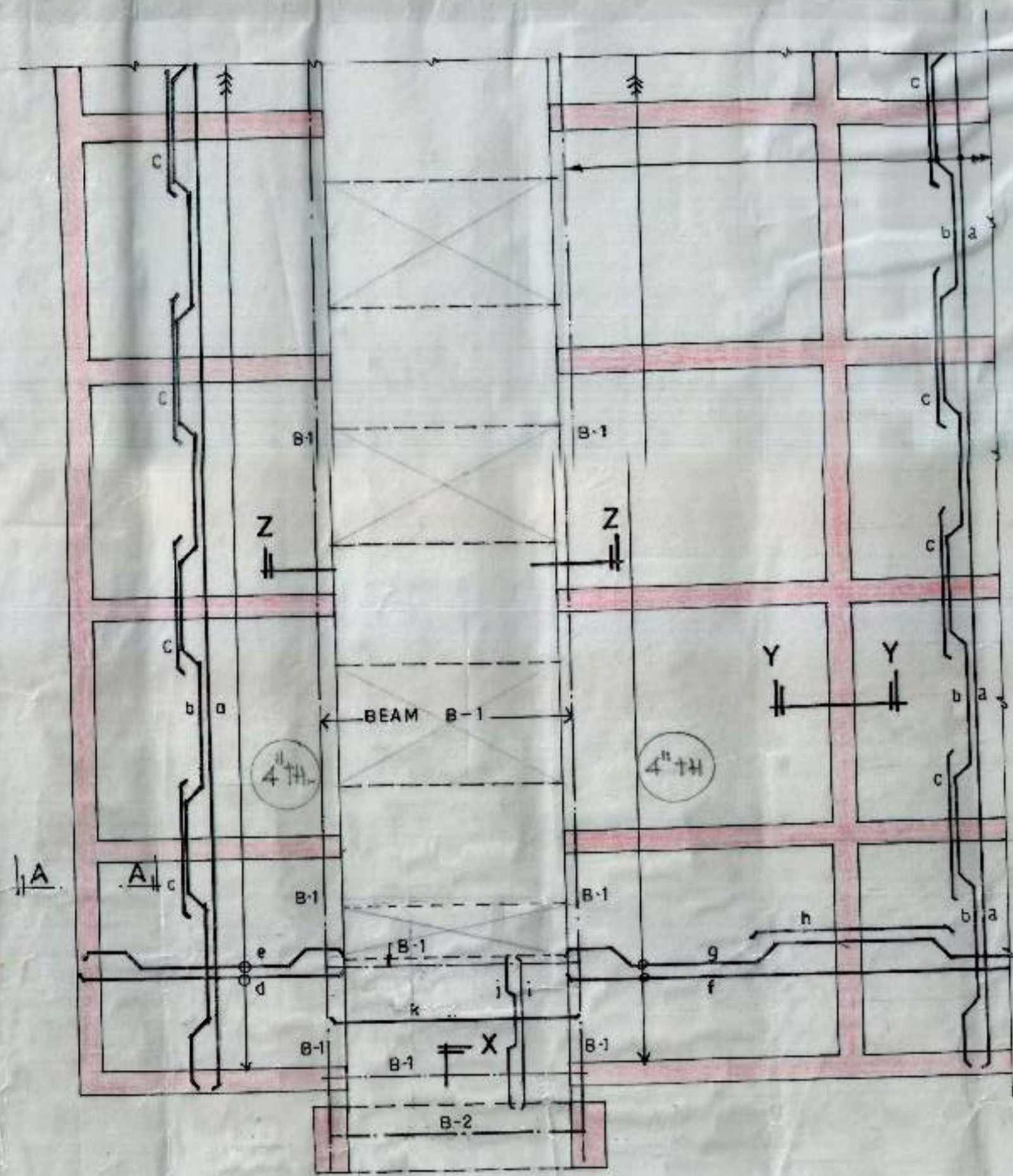


GATEWAY

GATEWAY

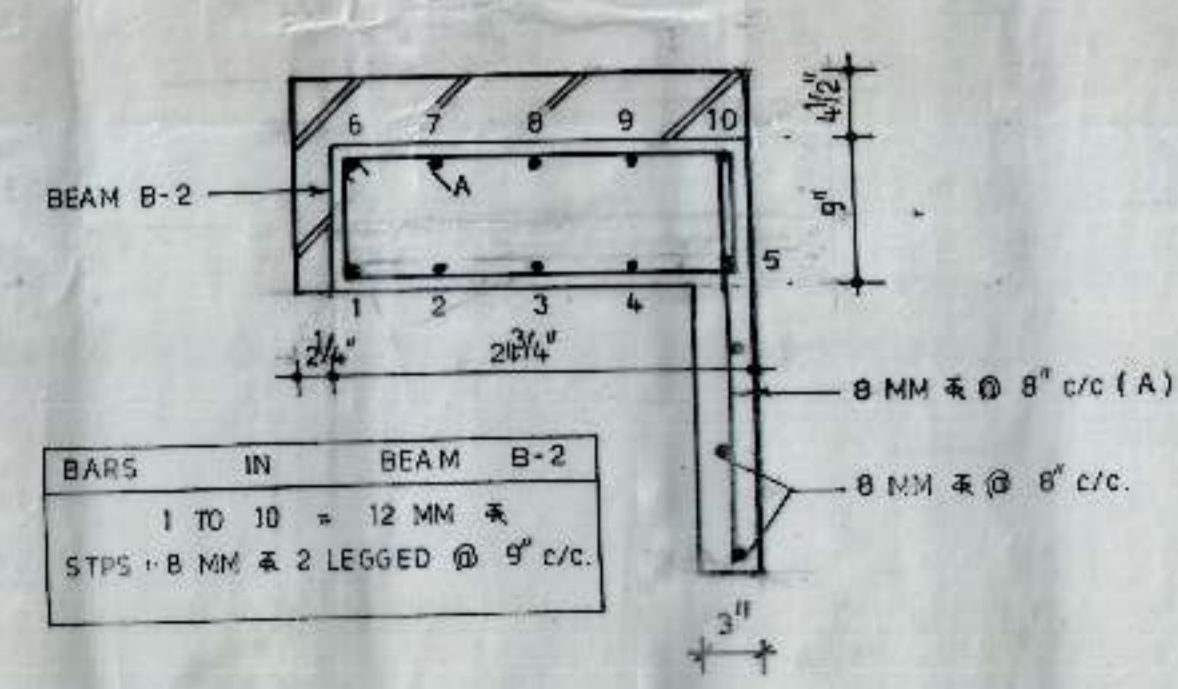
FOOD & VEGETABLE MARKET
SECTOR 20-C & 47-C
CHANDIGARH

NOTES:
1. USE M 15 CONCRETE
2. USE TOR STEEL FE-415.



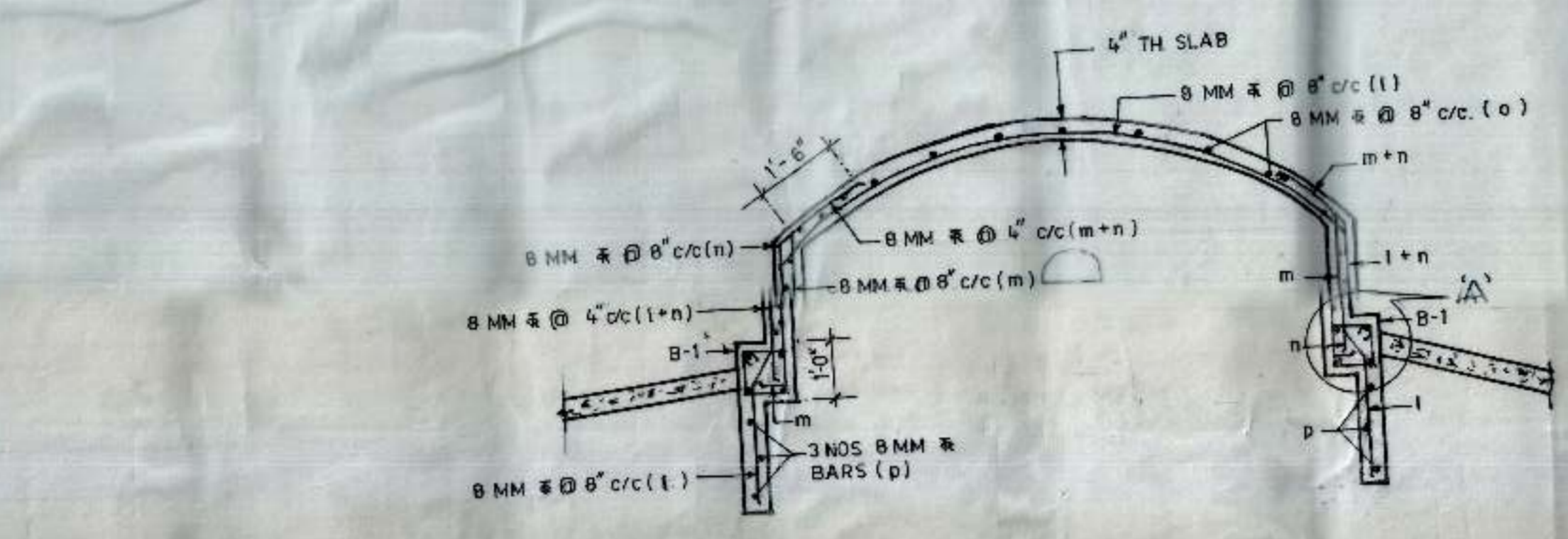
KEY PLAN

BARS IN SLAB
a, b, c, d, e, f, j, h = 8 MM @ 16" c/c
i, j = 8 MM @ 16" c/c
k = 8 MM @ 9" c/c

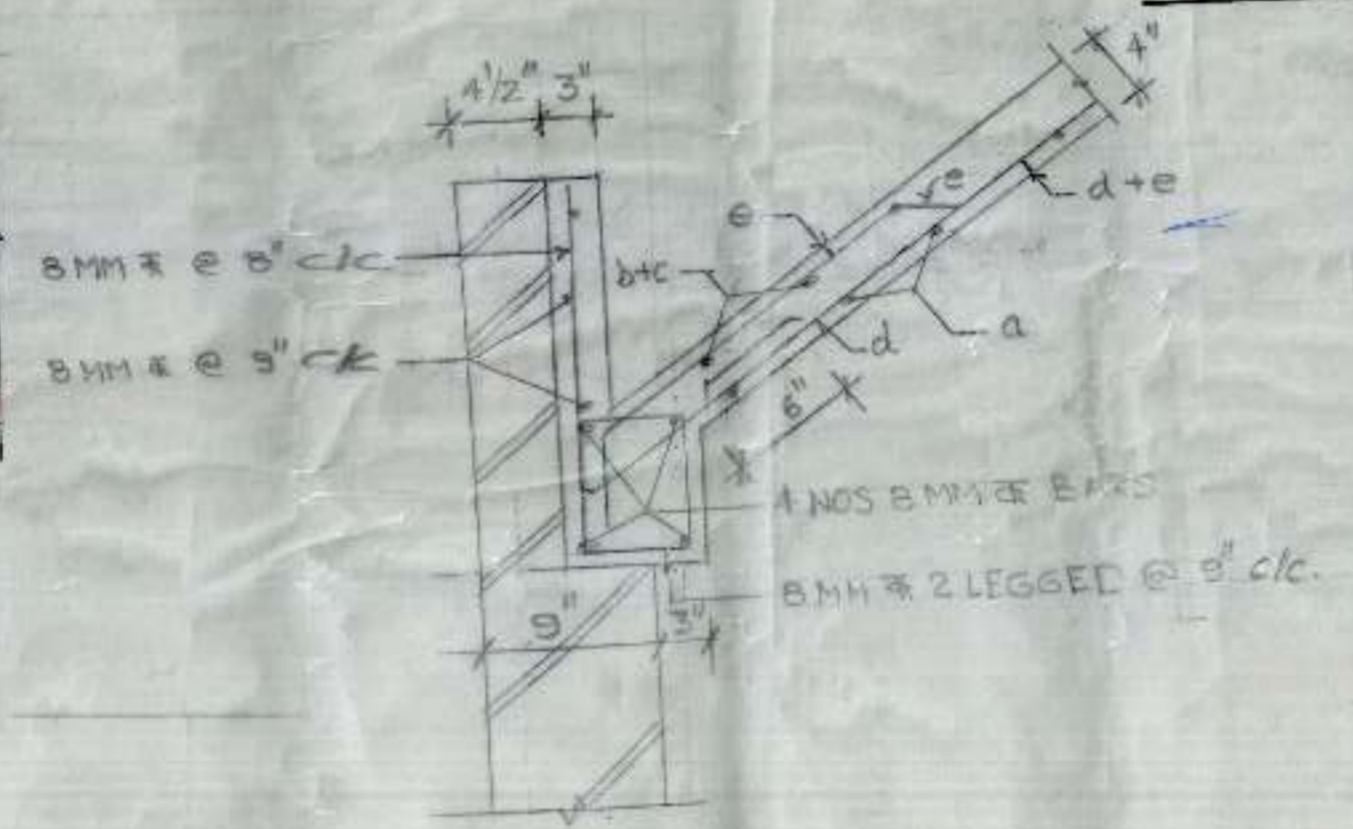


BARS IN BEAM B-2
1 TO 10 = 12 MM
STPS = 8 MM 2 LEGGED @ 9" c/c

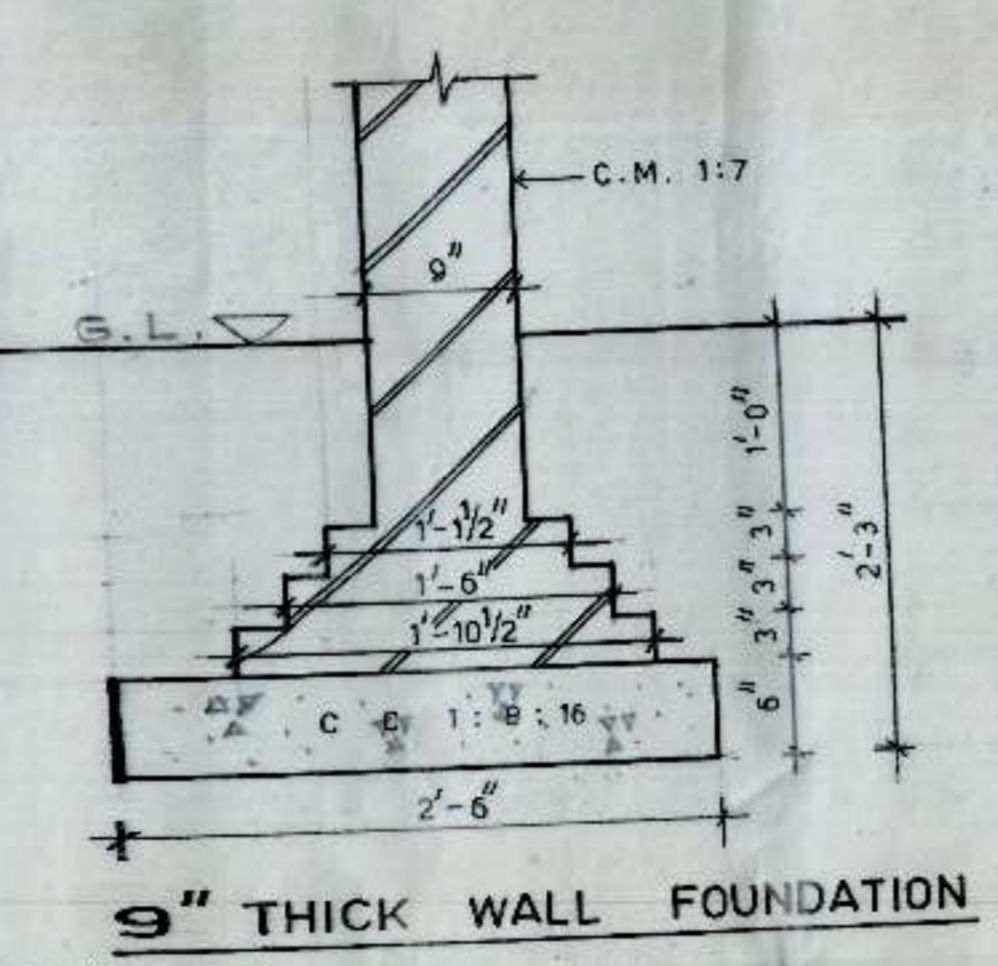
SECTION X-X



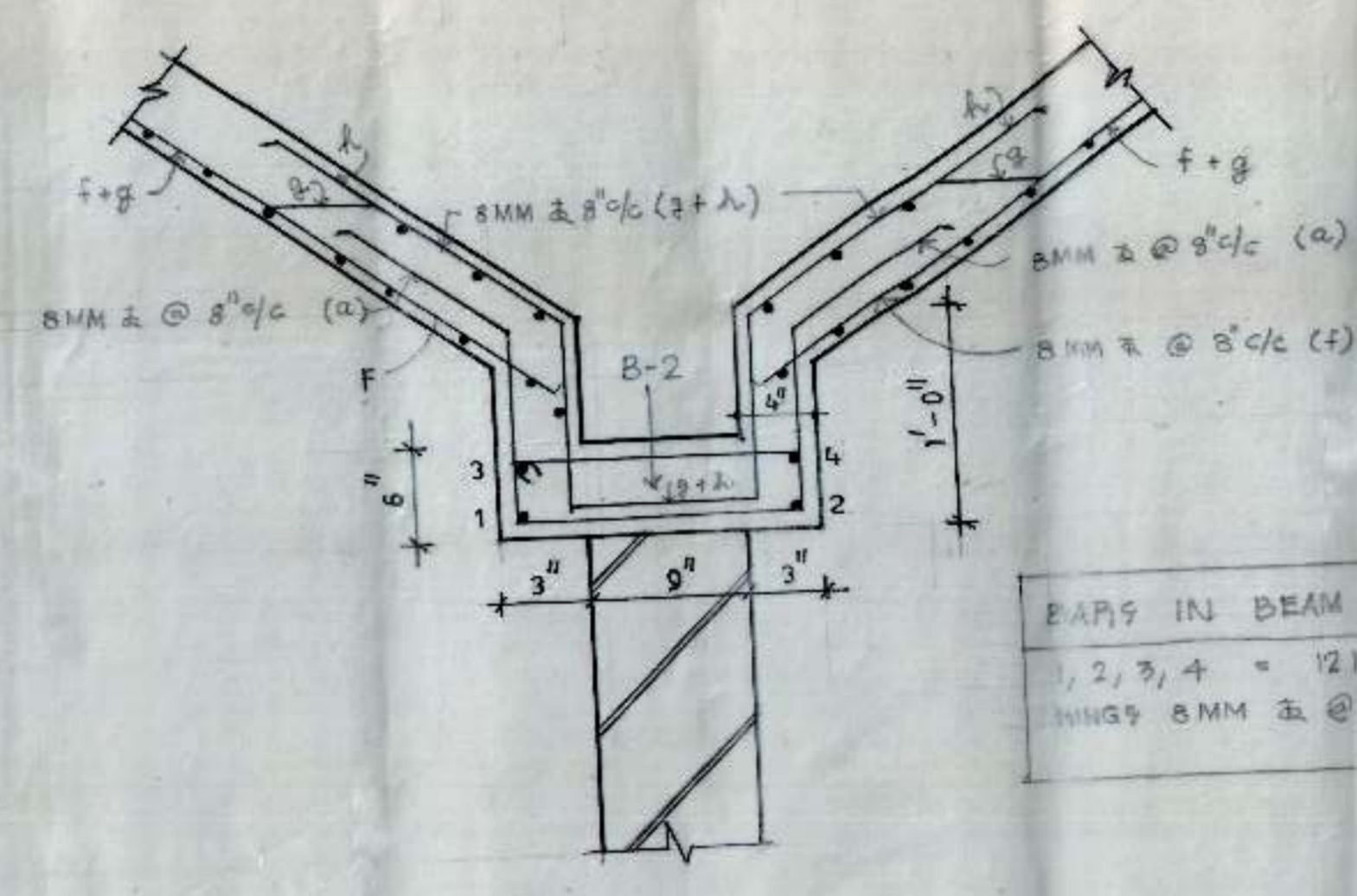
SECTION Z-Z



SECTION A-A

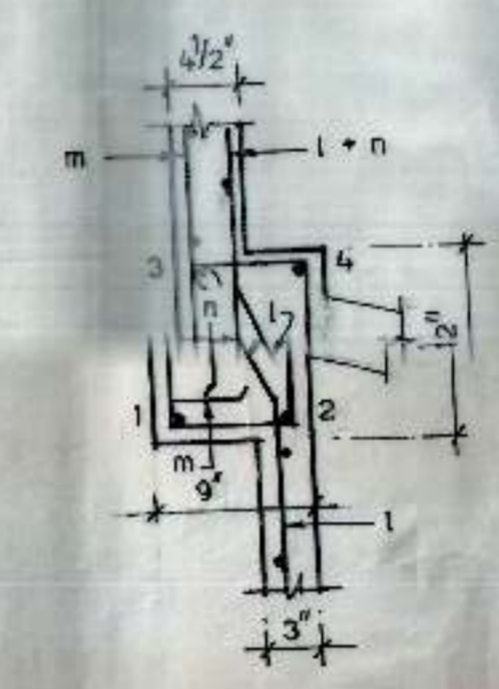


9" THICK WALL FOUNDATION



SECTION Y-Y

BARS IN BEAM B-2
1, 2, 3, 4 = 12 MM
STPS = 8 MM 2 LEGGED @ 9" c/c



DETAIL OF BEAM B-1 AT A

BARS IN BEAM B-1
1 TO 4 = 12 MM
STPS = 8 MM 2 LEGGED @ 9" c/c

CHANDIGARH HOUSING BOARD

TITLE: DETAILS OF FOUNDATION, SLAB & BEAM

SCALE: CHECKED BY: DEALT BY: K.K. DATED: JAN, 1996
JOB NO: FM DRG NO: 01

M.S.T. CONSULTANTS
S.C.F. 23, SECTOR - 16
CHANDIGARH