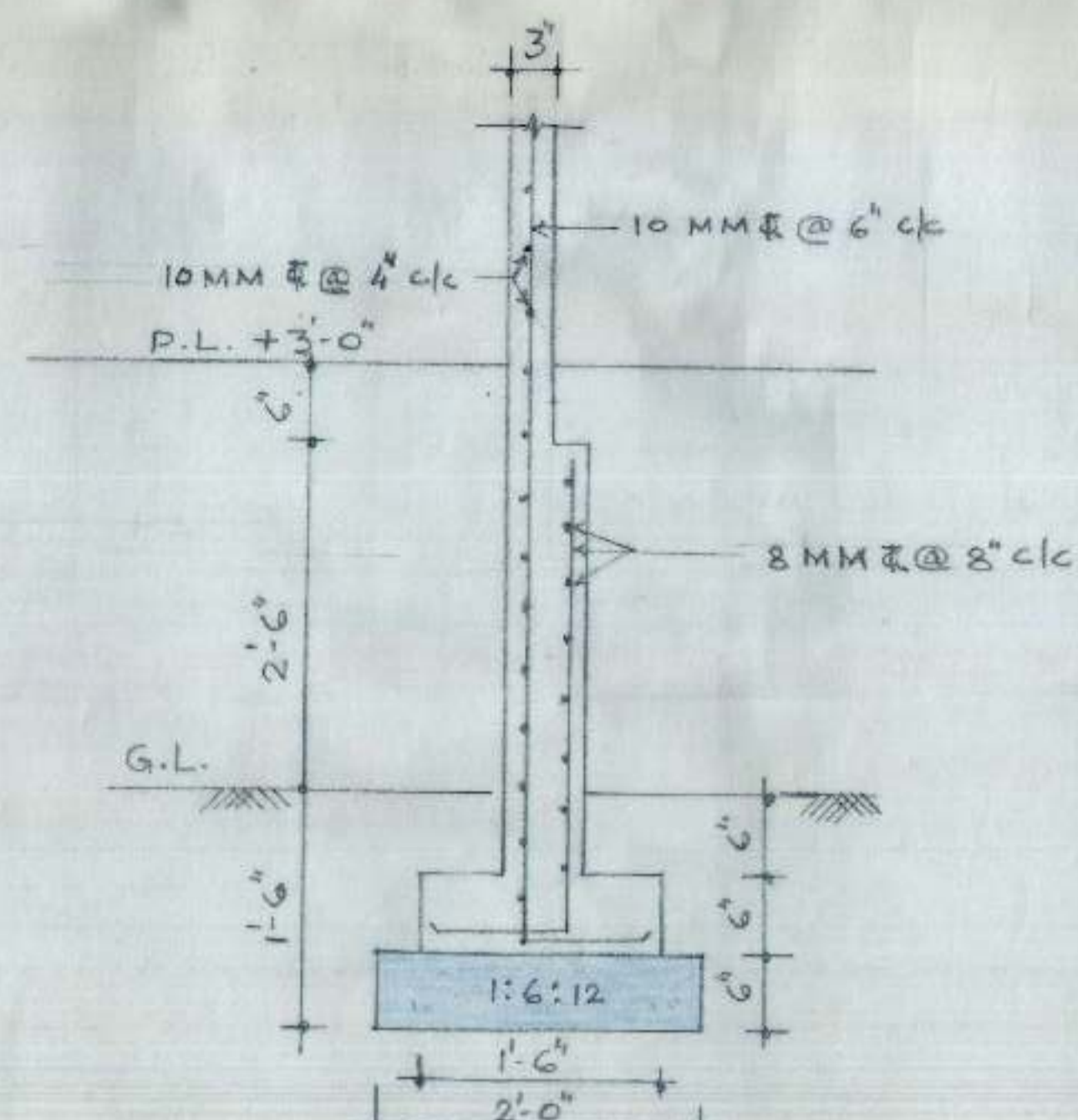
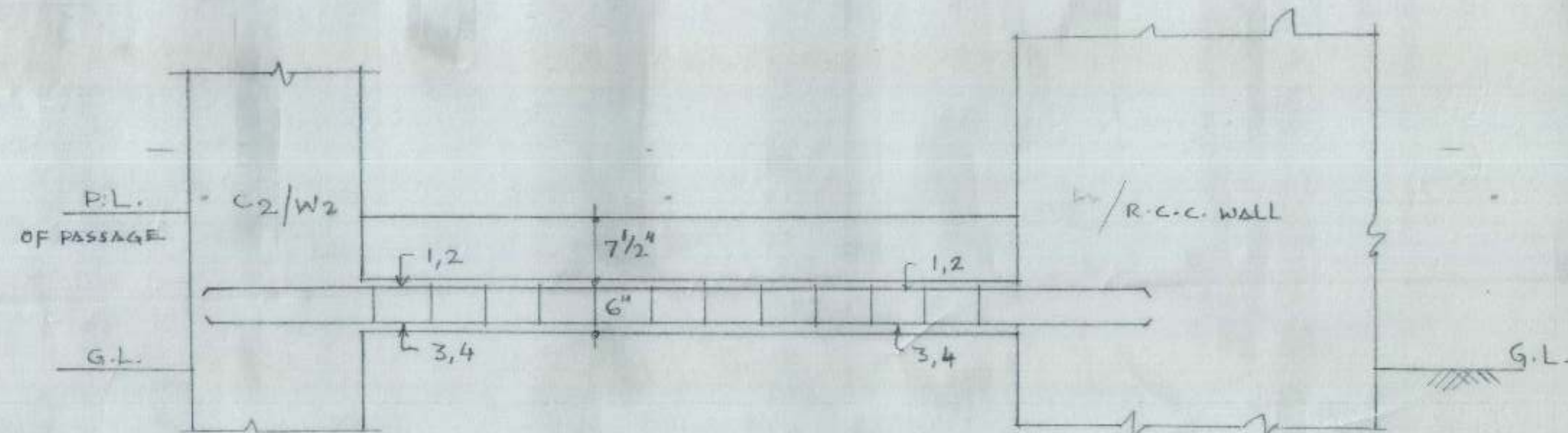


FOUNDATION DETAIL FOR W-1

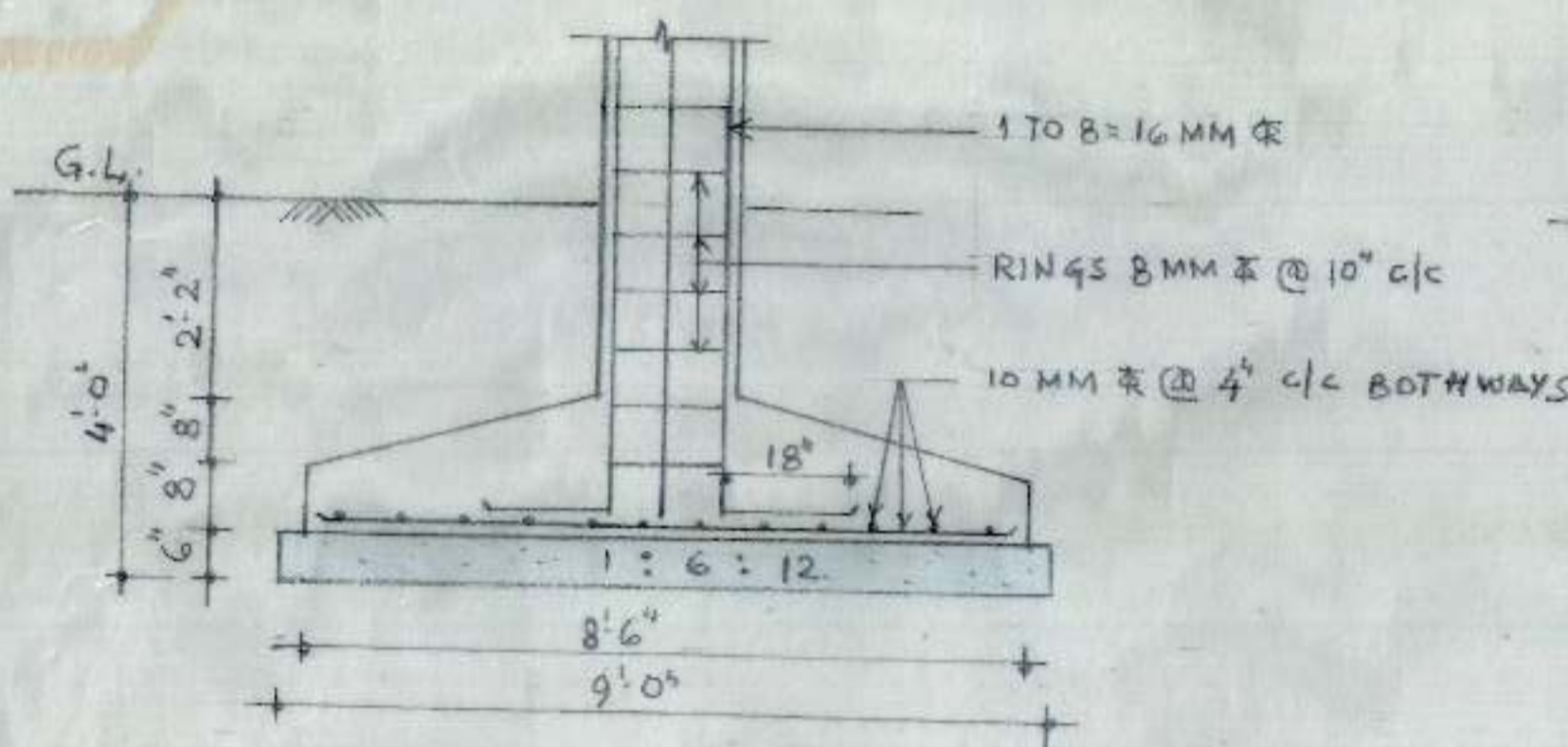
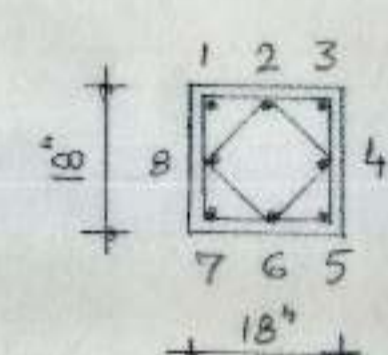
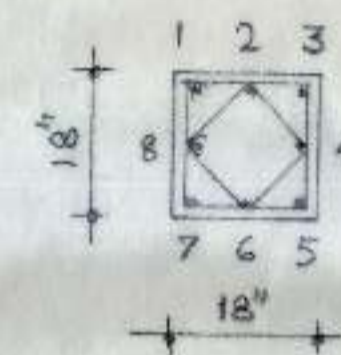


FOUNDATION DETAIL FOR W-2

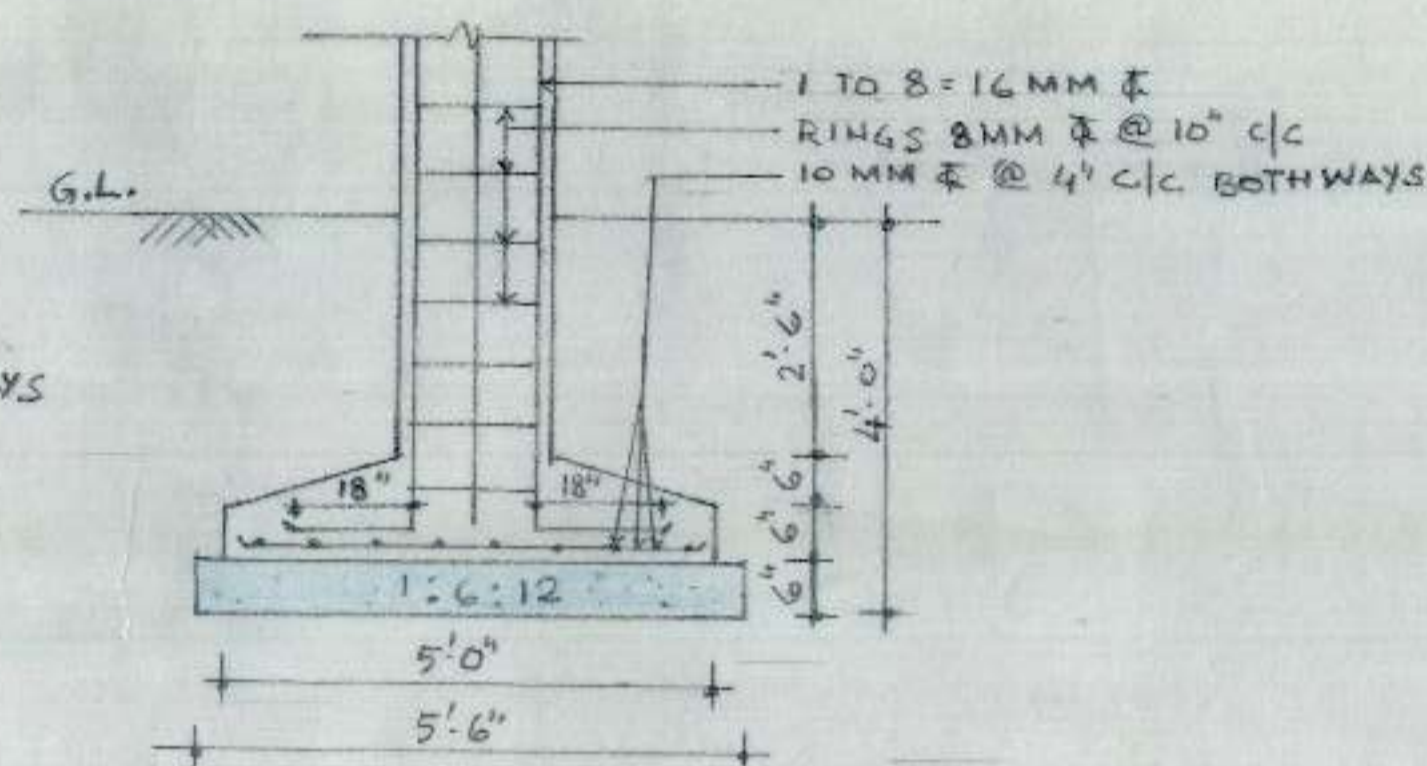


BEAM FB-1 (9" x 6")

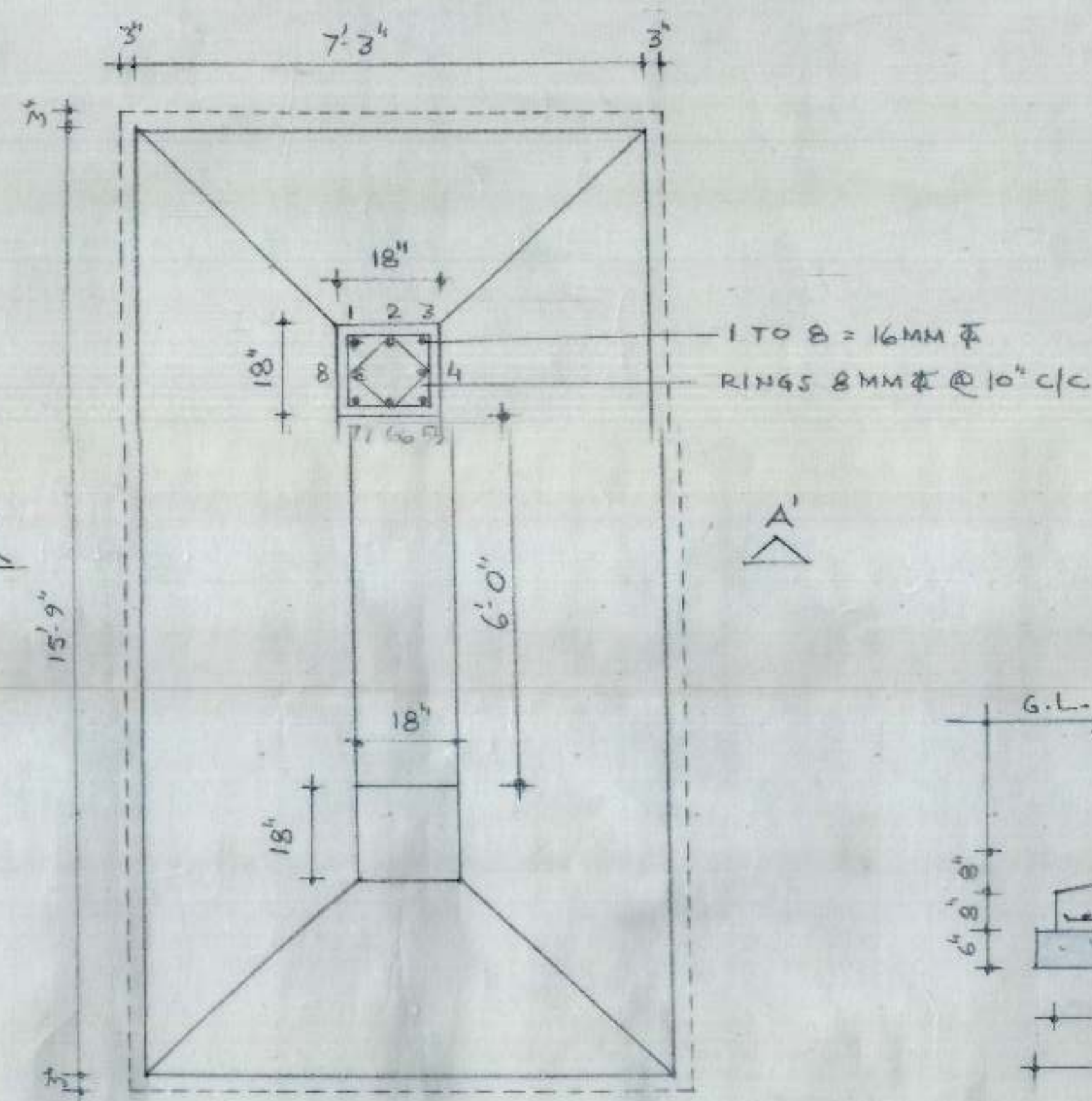
REINF. IN FB-1
1 TO 4 = 10 MM ̄
RINGS 8 MM ̄ @ 6" c/c
TH. OUT.



SECTION C1

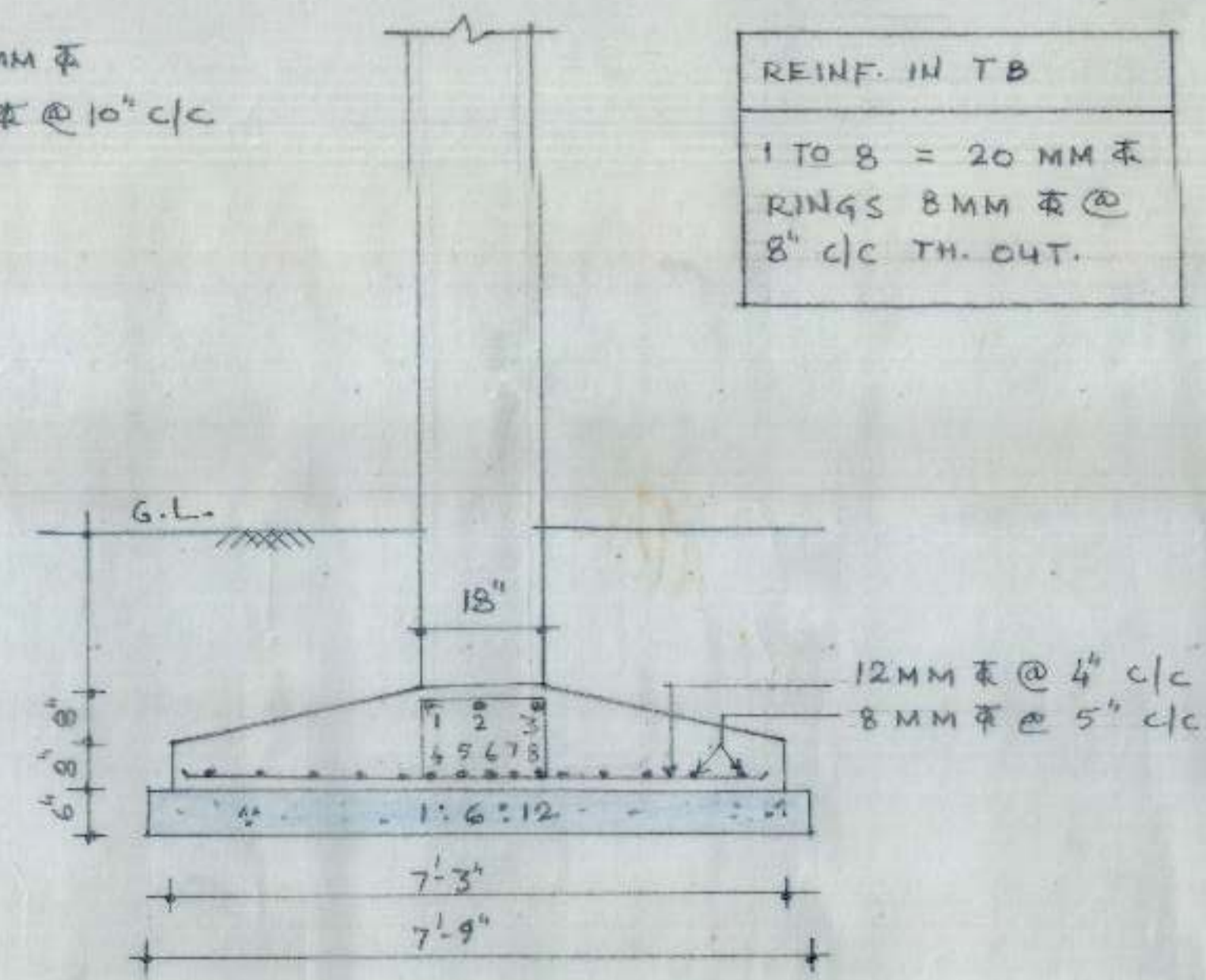


SECTION C2

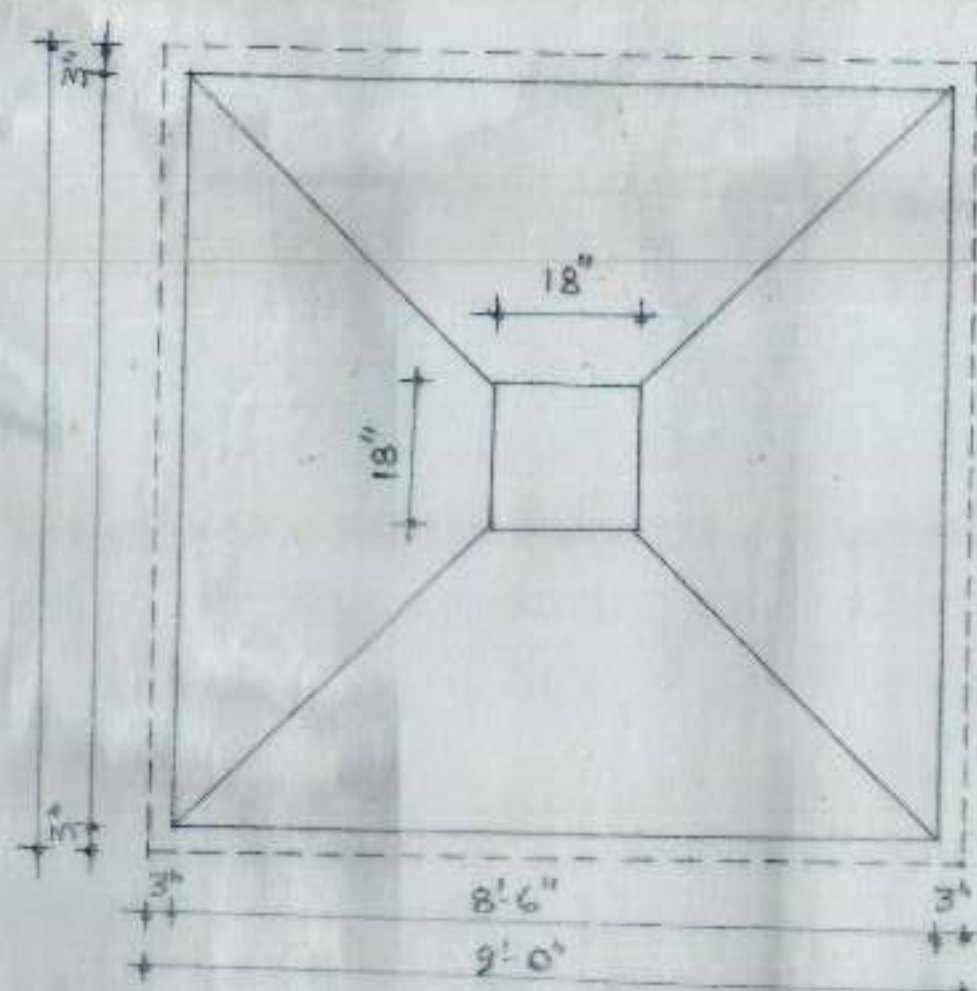


PLAN FOR COMBINED FOOTING C3

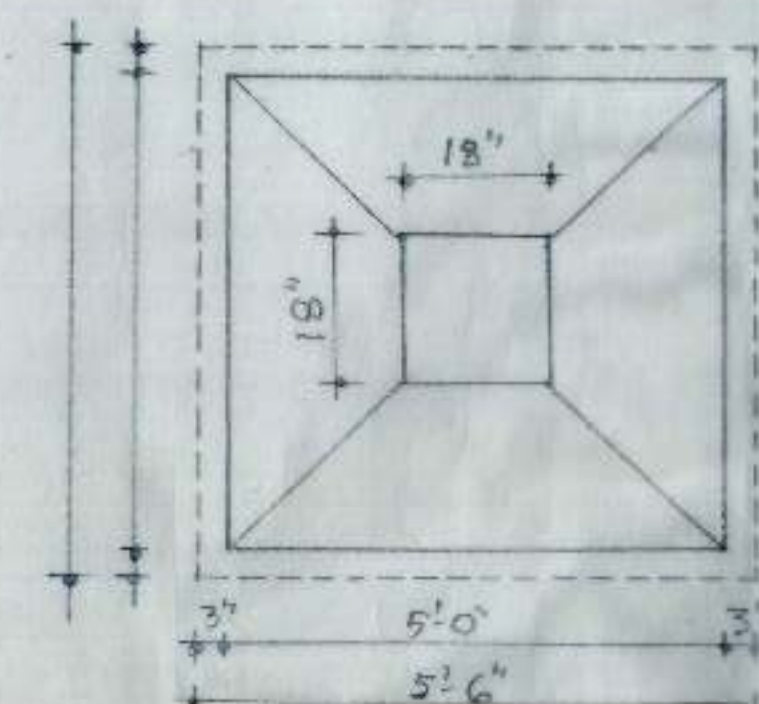
REINF. IN TB
1 TO 8 = 20 MM ̄
RINGS 8 MM ̄ @ 8" c/c TH. OUT.



SECTION A-A



PLAN FOR COL. C1 FOOTING



PLAN FOR COL. C2 FOOTING

COVERED PLATFORM FOR
SUBZI MANDI REHRI PHARI
ASSOCIATION SECTOR :- 39
CHANDIGARH.

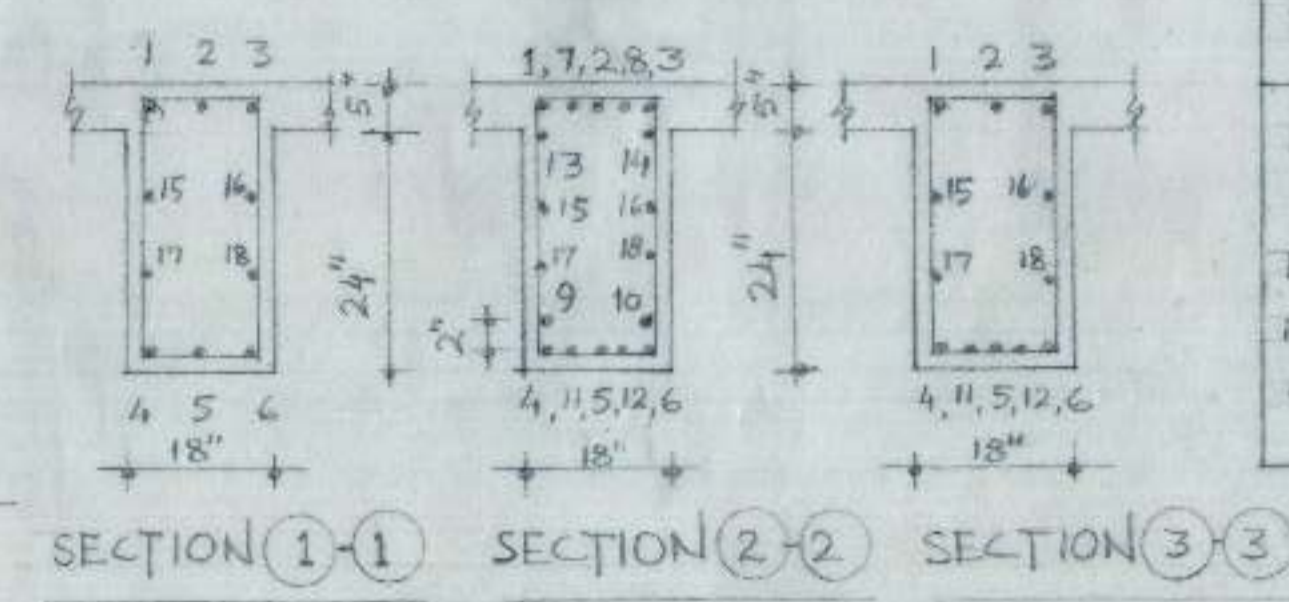
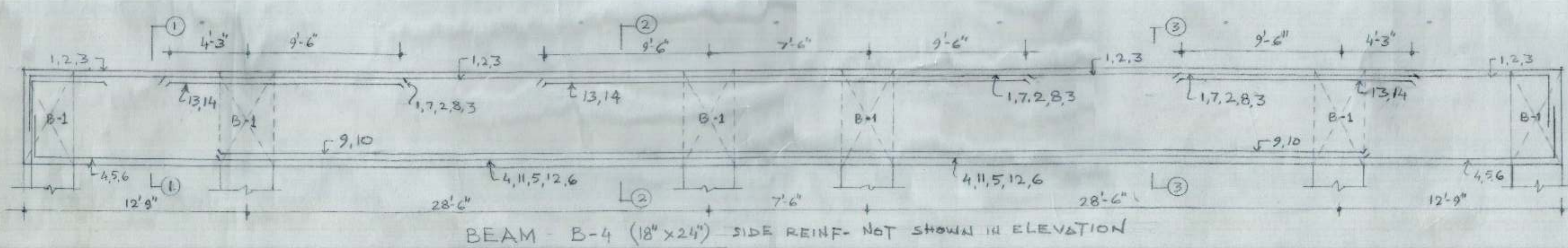
DETAIL OF C1, C2,
COMBINED FOOTING C3
W1, W2 AND FB1

M/S DINESH KUMAR SHARMA
G15, SECTOR :- 41 A
CHANDIGARH.

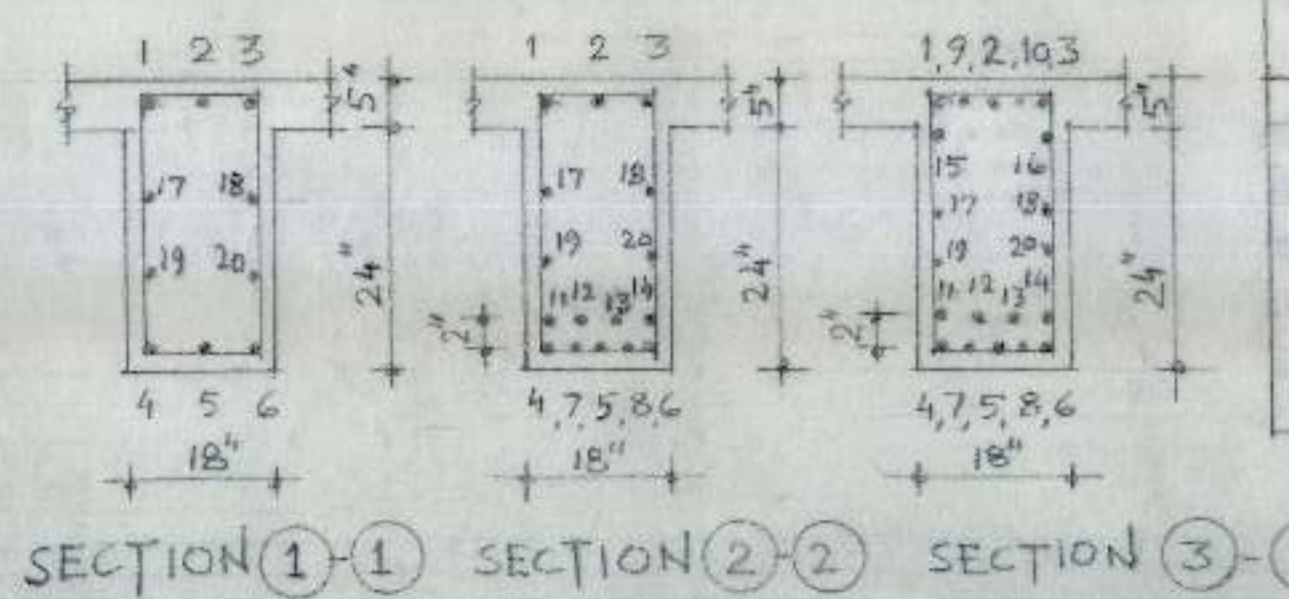
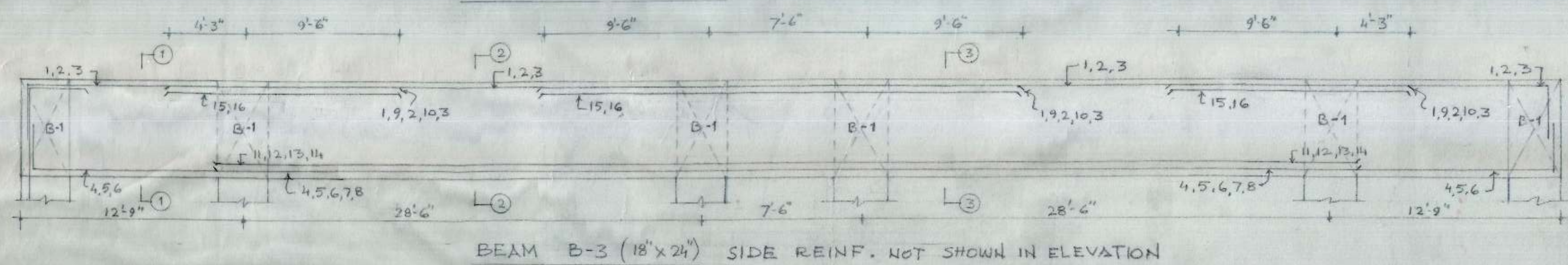
ENGINEER :-

Dinesh Kumar

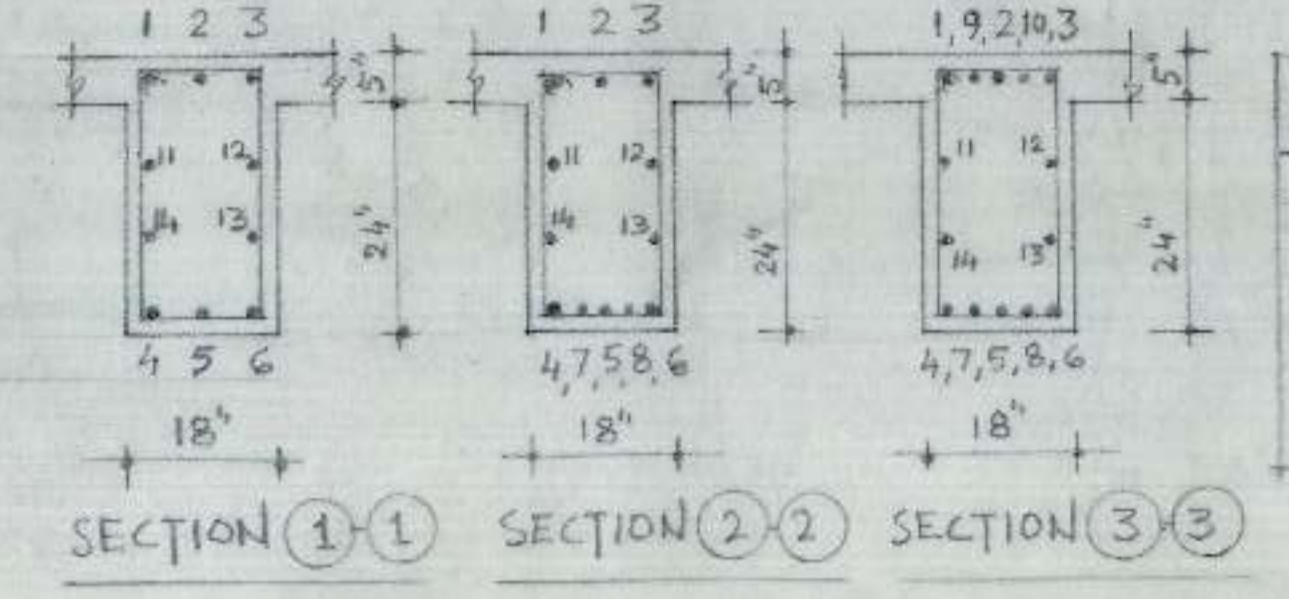
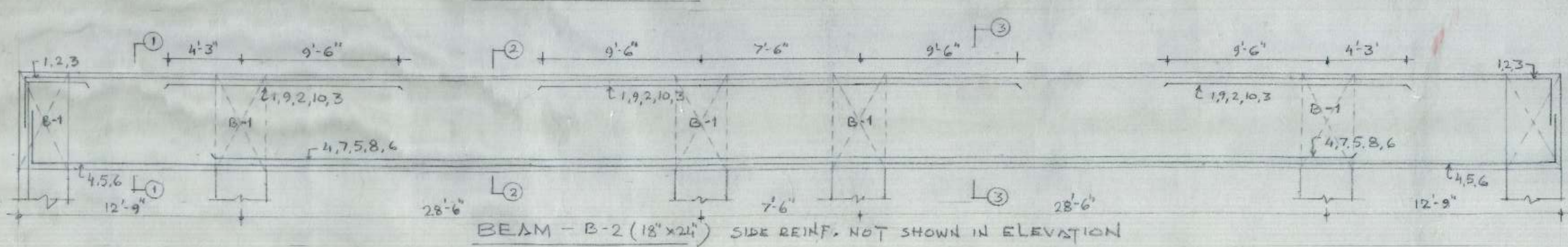
DRG. No.	JOB No.	DATE
01	DKS/101	MAY, 2002
(118)		



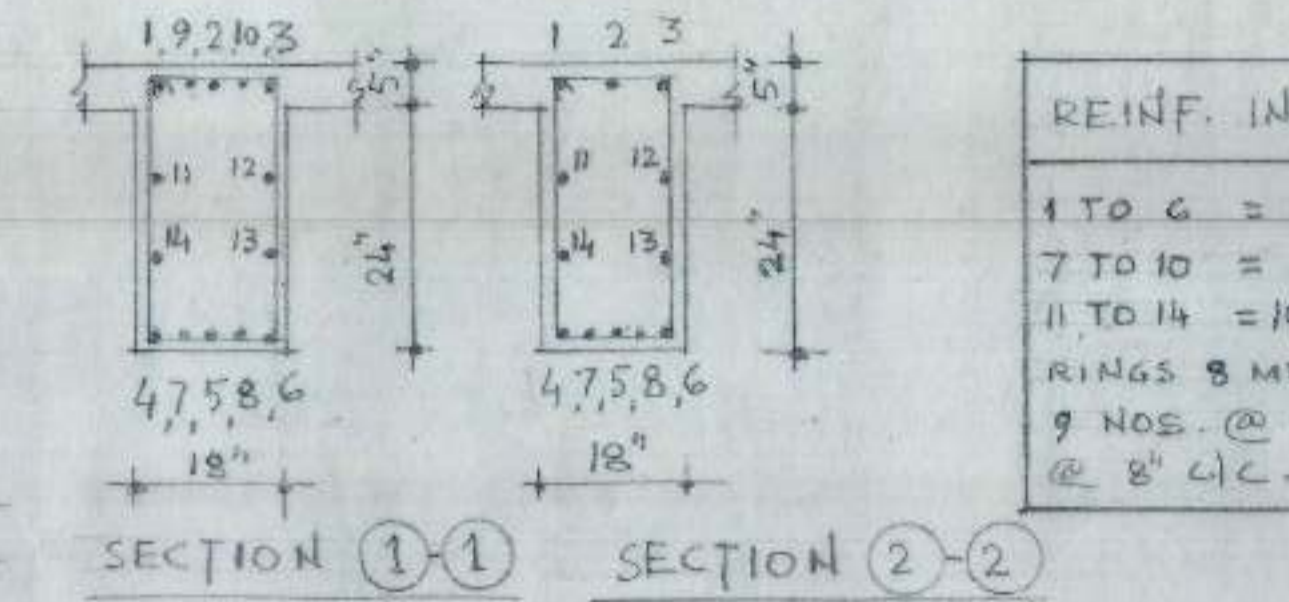
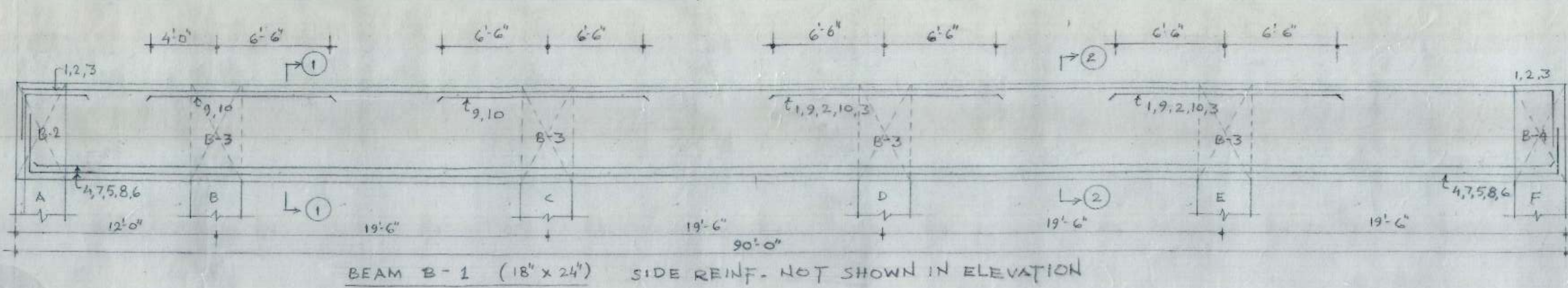
REINF. IN B-4
 1 TO 12 = 20 MM $\bar{\bar{r}}$
 13, 14 = 16 MM $\bar{\bar{r}}$
 15 TO 17 = 10MM $\bar{\bar{r}}$ SIDE FACE REIN.
 RINGS 8 MM $\bar{\bar{r}}$ 2 LEGS.
 9 NOS. @ 4" c/c + REST @ B' c/c



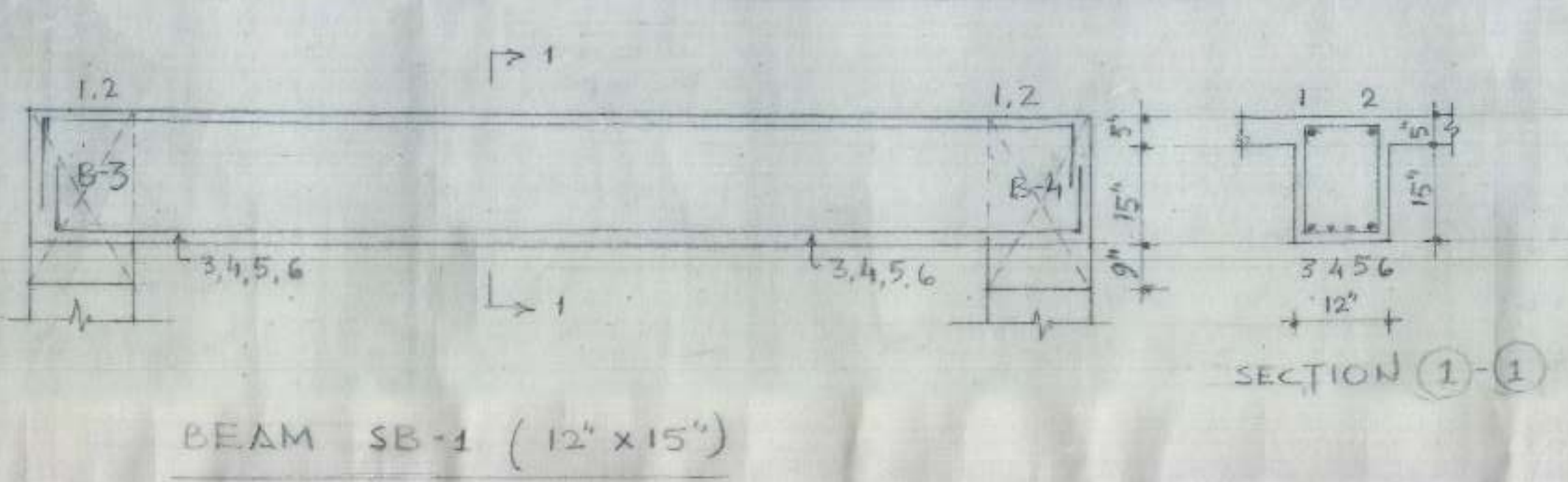
REINF. IN B-3
 1 TO 16 = 20 MM $\bar{\bar{r}}$
 17 TO 20 = 10MM $\bar{\bar{r}}$ SIDE FACE REIN.
 RINGS 8 MM $\bar{\bar{r}}$ 2 LEGS. 9 NOS.
 @ 4" c/c + REST @ B' c/c



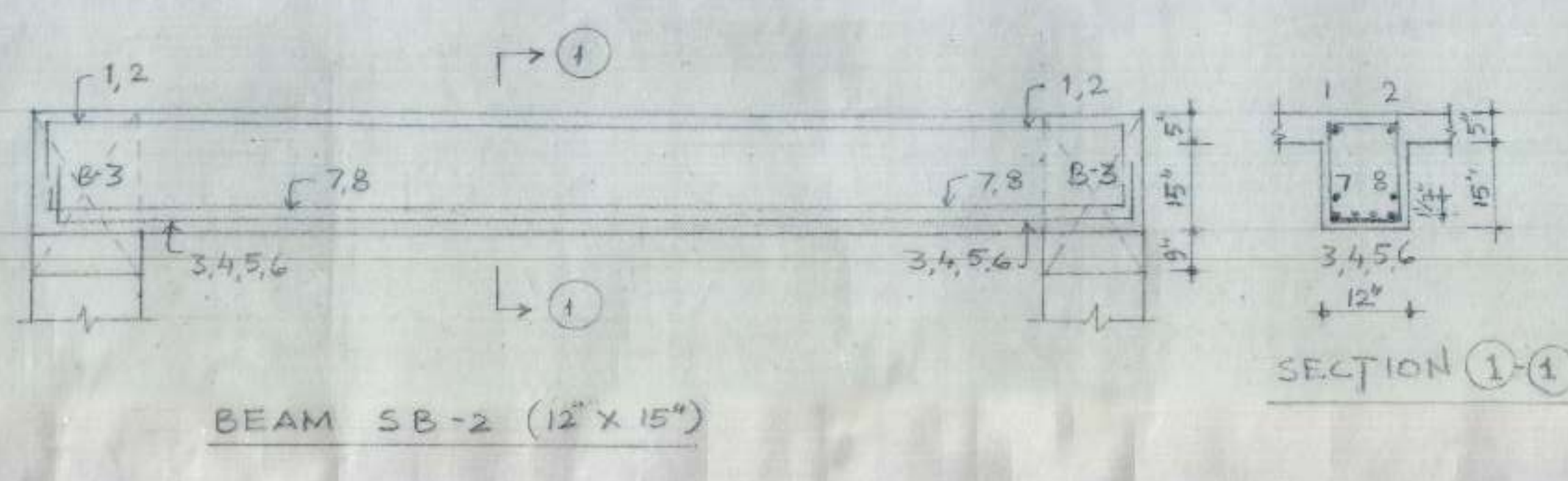
REINF. IN B-2
 1 TO 10 = 20 MM $\bar{\bar{r}}$
 11 TO 14 = 10 MM $\bar{\bar{r}}$ SIDE FACE REIN.
 RINGS 8 MM $\bar{\bar{r}}$ 2 LEGS.
 9 NOS. @ 4" c/c + REST @ 8" c/c



REINF. IN B-1
 1 TO 6 = 12 MM $\bar{\bar{r}}$
 7 TO 10 = 20 MM $\bar{\bar{r}}$
 11 TO 14 = 10MM $\bar{\bar{r}}$ SIDE FACE REIN.
 RINGS 8 MM $\bar{\bar{r}}$ 2 LEGS.
 9 NOS. @ 4" c/c + REST @ 8" c/c.



REINF. IN SB-1
 1, 2 = 12 MM $\bar{\bar{r}}$
 3, 4, 5, 6 = 20 MM $\bar{\bar{r}}$
 RINGS 8MM $\bar{\bar{r}}$ @ 8" c/c



REINF. IN SB-2
 1, 2, 7, 8 = 12 MM $\bar{\bar{r}}$
 3, 4, 5, 6 = 20 MM $\bar{\bar{r}}$
 RINGS 8MM $\bar{\bar{r}}$ 2 LEGS.
 9 NOS. @ 4" c/c + REST @ 8" c/c

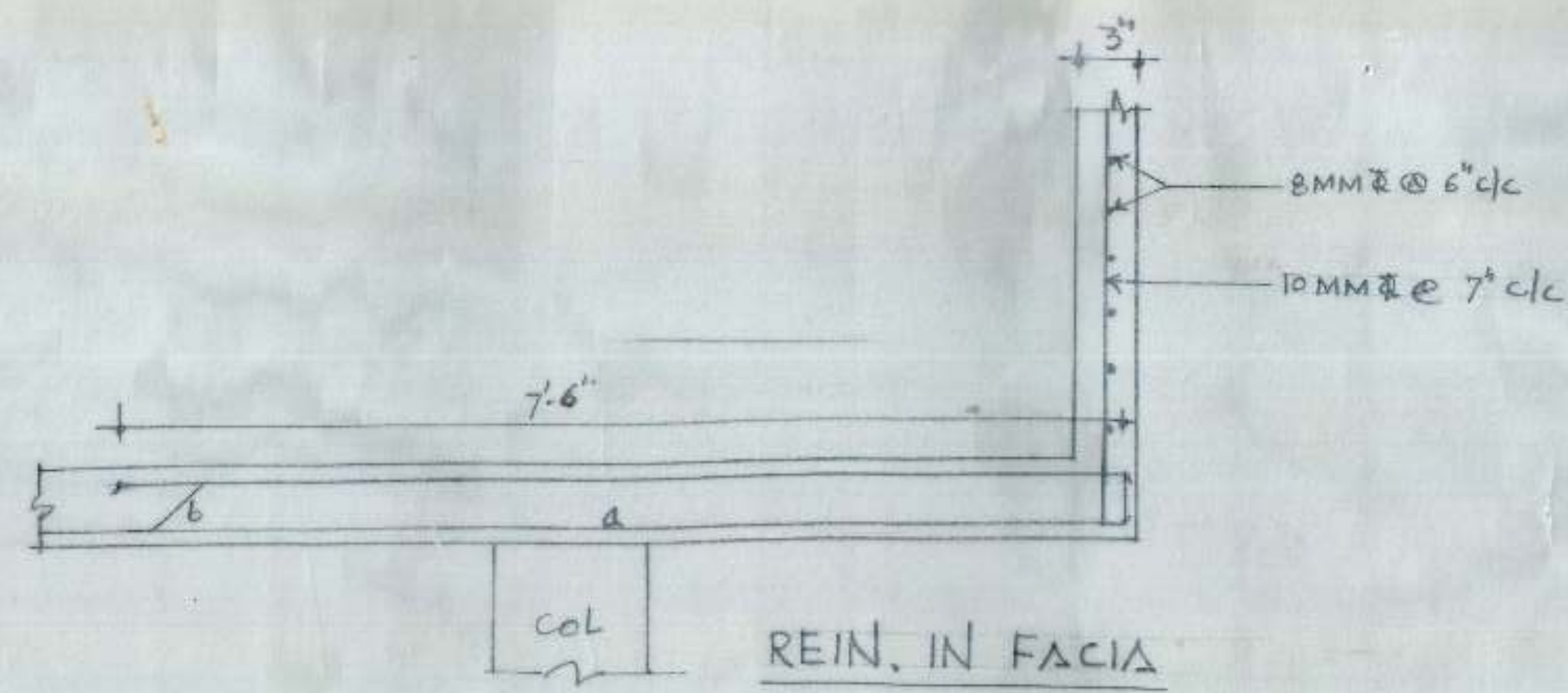
COVERED PLAT FORM FOR
 SUBZI MANDI REHRI
 PHARI ASSOCIATION
 SECTOR - 39
 CHANDIGARH.

B1, B2, B3, B4
 SB-I, SB-II

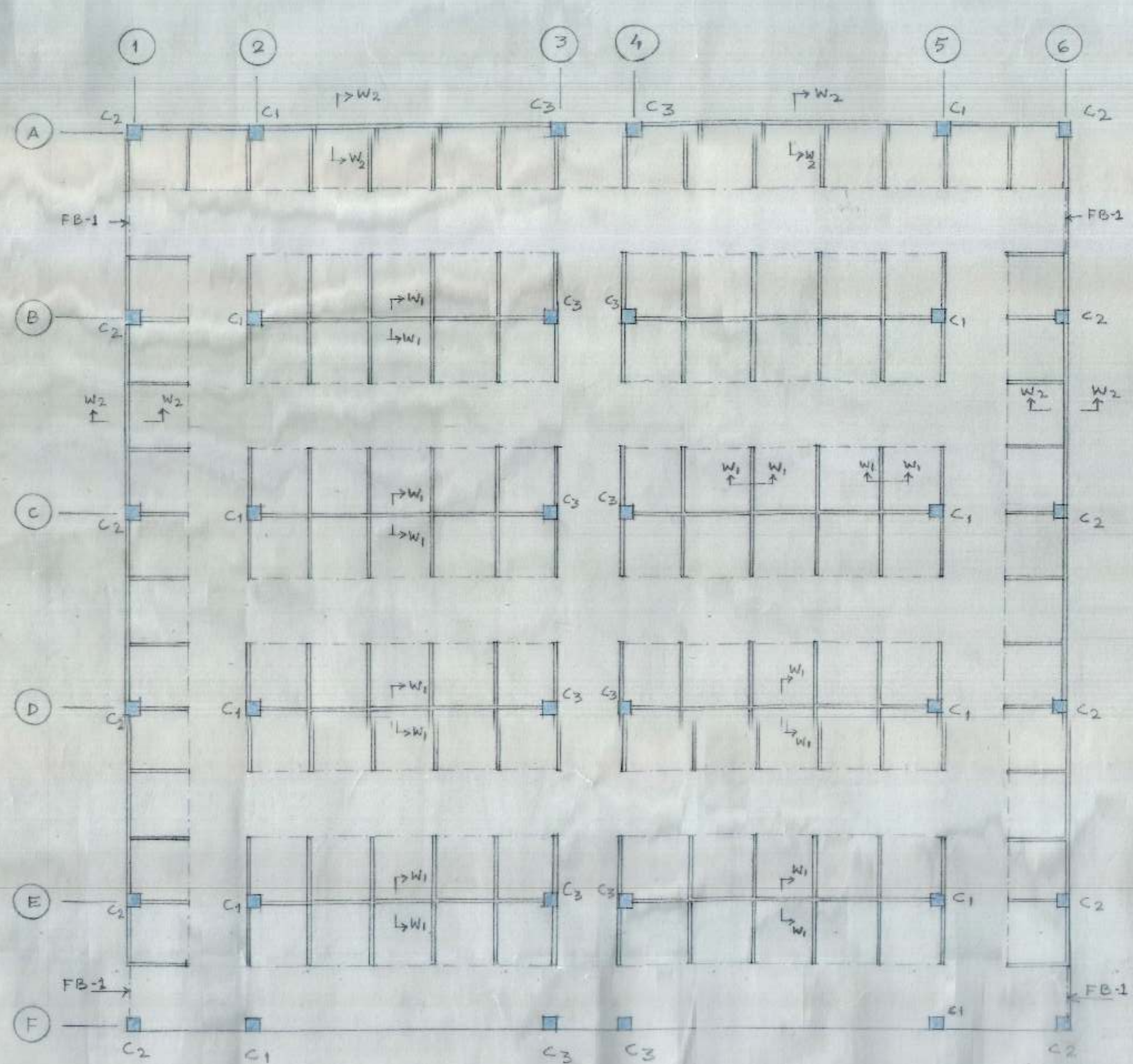
M/s. DINESH KUMAR SHARMA
 G15, SECTOR 41-A
 CHANDIGARH

ENGINEER :-
 Dinesh Kumar

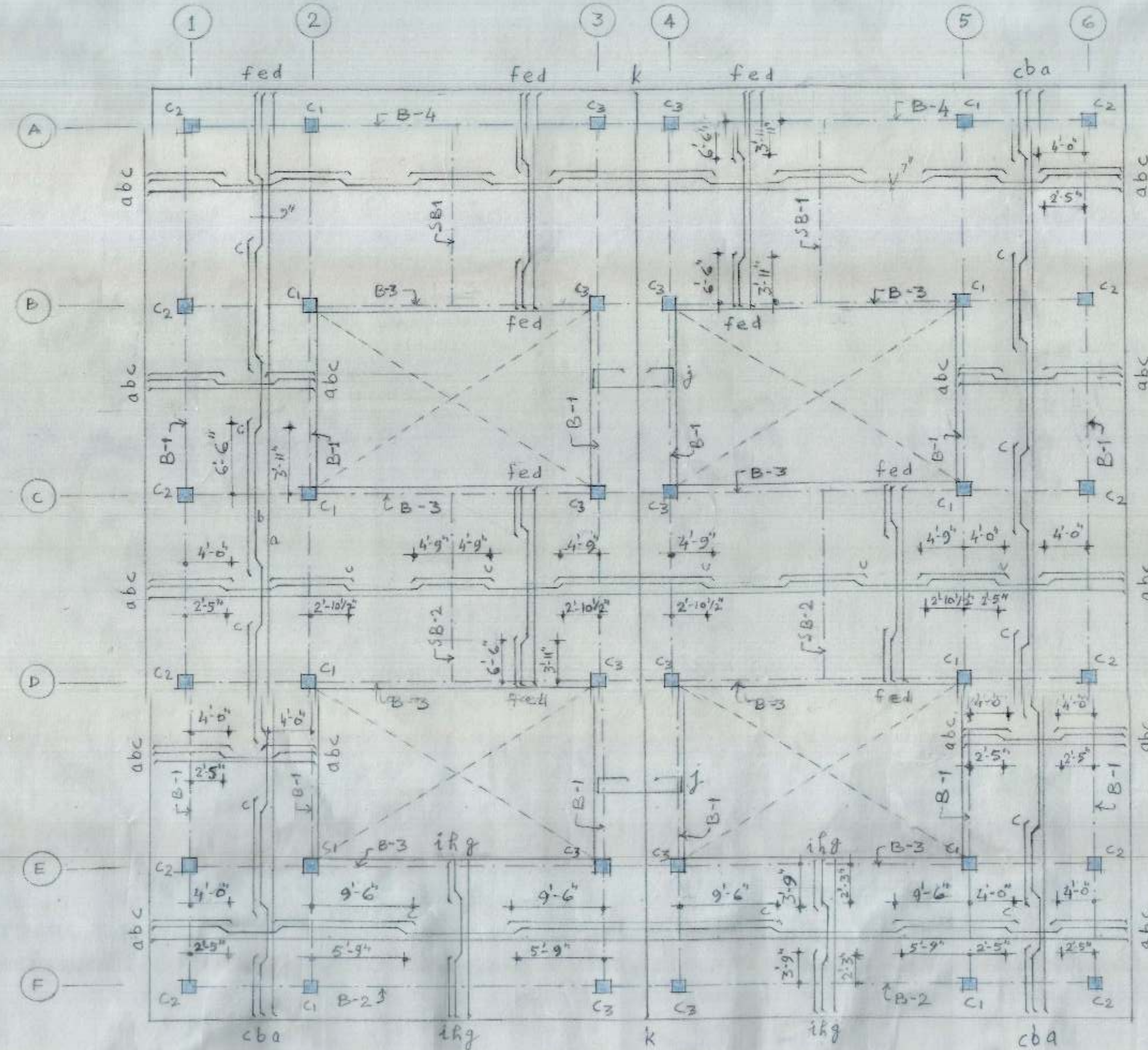
DRG. NO. JOB NO. DATE :-
 02 DKS/101 MAY 2004
 HB



REINF. IN SLAB				
a	8 MM	棒	@	14" c/c
b	10 MM	棒	@	14" c/c
c	10 MM	棒	@	14" c/c
d	10 mm	棒	@	18" c/c
e	10 mm	棒	@	18" c/c
f	10 MM	棒	@	18" c/c
g	8 MM	棒	@	11" c/c
h	10 MM	棒	@	11" c/c
i	10 MM	棒	@	11" c/c
j	10 MM	棒	@	6" c/c BOTH FACES
k	10 MM	棒	@	9" c/c



GROUND FLOOR KEY PLAN



REINFORCEMENT IN ROOF SLAB

NOTES :-

1. USE M-20 CONCRETE.
2. USE TOR STEEL CONFORMING TO IS 1785-1986 FOR GRADE FE 415.
3. FOUNDATION SHALL BE LAID OVER A WELL COMPACTED SUB GRADE. ALL LOOSE PATCHES BURROWS, ORGANIC MATTER SHALL BE TAKEN OUT RESULTING SPACE BE FILLED WITH P.C.C 1:8:16.
4. P.C.C. SHALL BE MACHINE MIXED.
5. REINFORCEMENT ALL CODAL PROVISIONS LAID IN IS 456-2000 SHOULD BE STRICTLY FOLLOWED TO ENSURE QUALITY AS PER B.I.S. STANDARDS.
6. DIMENSIONS ARE TO BE READ AND NOT SCALED COPY.
7. NET S.B.C. OF SOIL IS 10 t/m².
8. CLEAR COVER TO REINF.
 - (a) FOUNDATION = 2"
 - (b) BEAMS = 1 1/2"
 - (c) COLUMNS = 1"
 - (d) SLABS = 3/4"
9. PROVISION UNDER CRANK BARS OF 10 MM $\bar{\phi}$ @ 12" c/c (MIN. 2 NOS.).
10. FOR DETAIL DIMENSIONS REF. ARCH. DRG. AND FOR STR. MEMBERS DIMENSION GIVEN IN STR. DRG. SHOULD BE FOLLOWED.

COVERED PLATFORM FOR
SUBZI MANDI REHRI DHARI
ASSOCIATION SECTOR-39
CHANDIGARH.

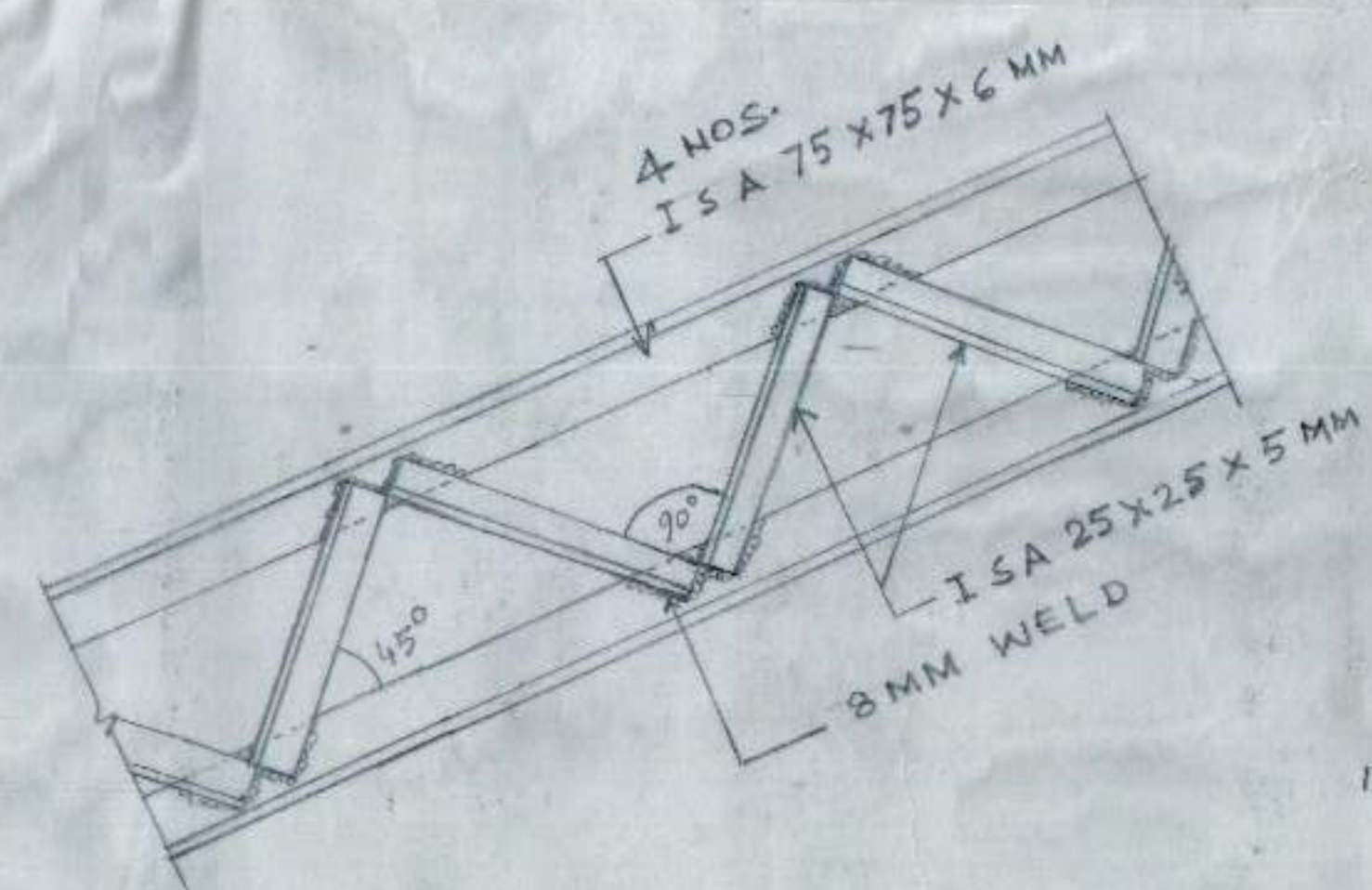
GROUND FLOOR KEY PLAN
REINFORCEMENT IN ROOF SLAB

M/S DINESH KUMAR SHARMA
615, SECTOR-41A
CHANDIGARH.

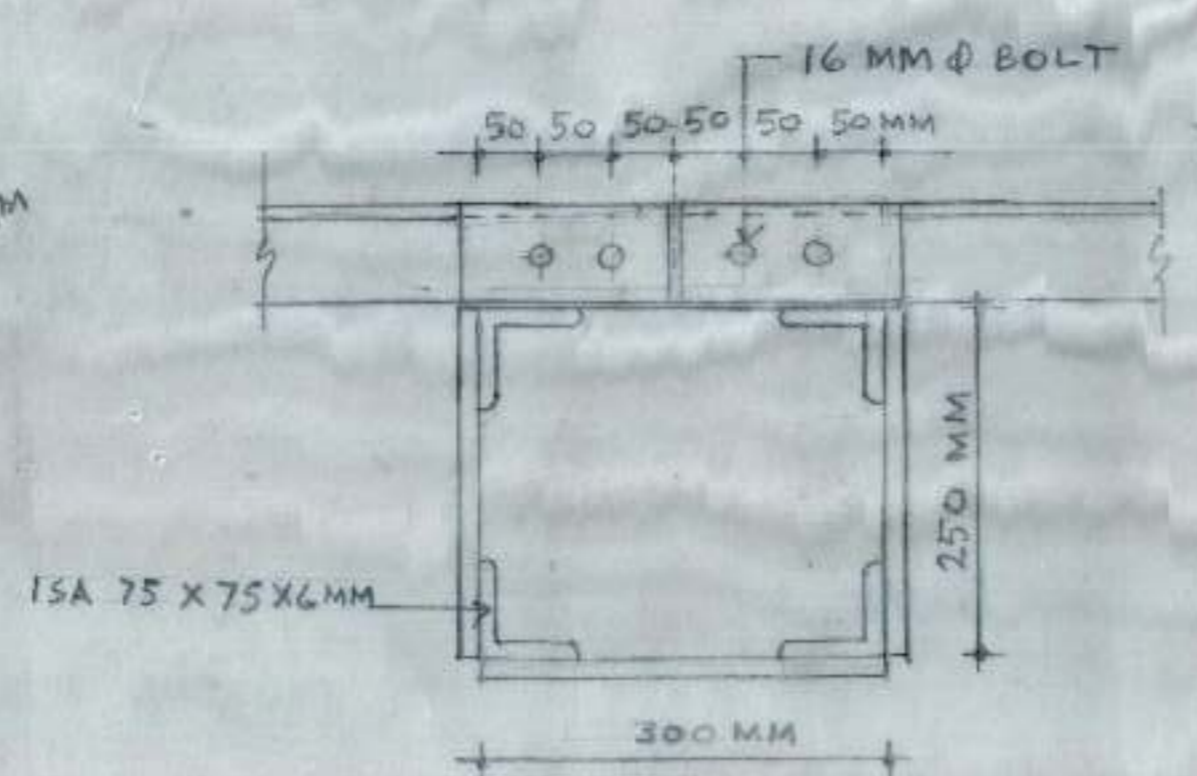
ENGINEER:-

Dinesh Kumar

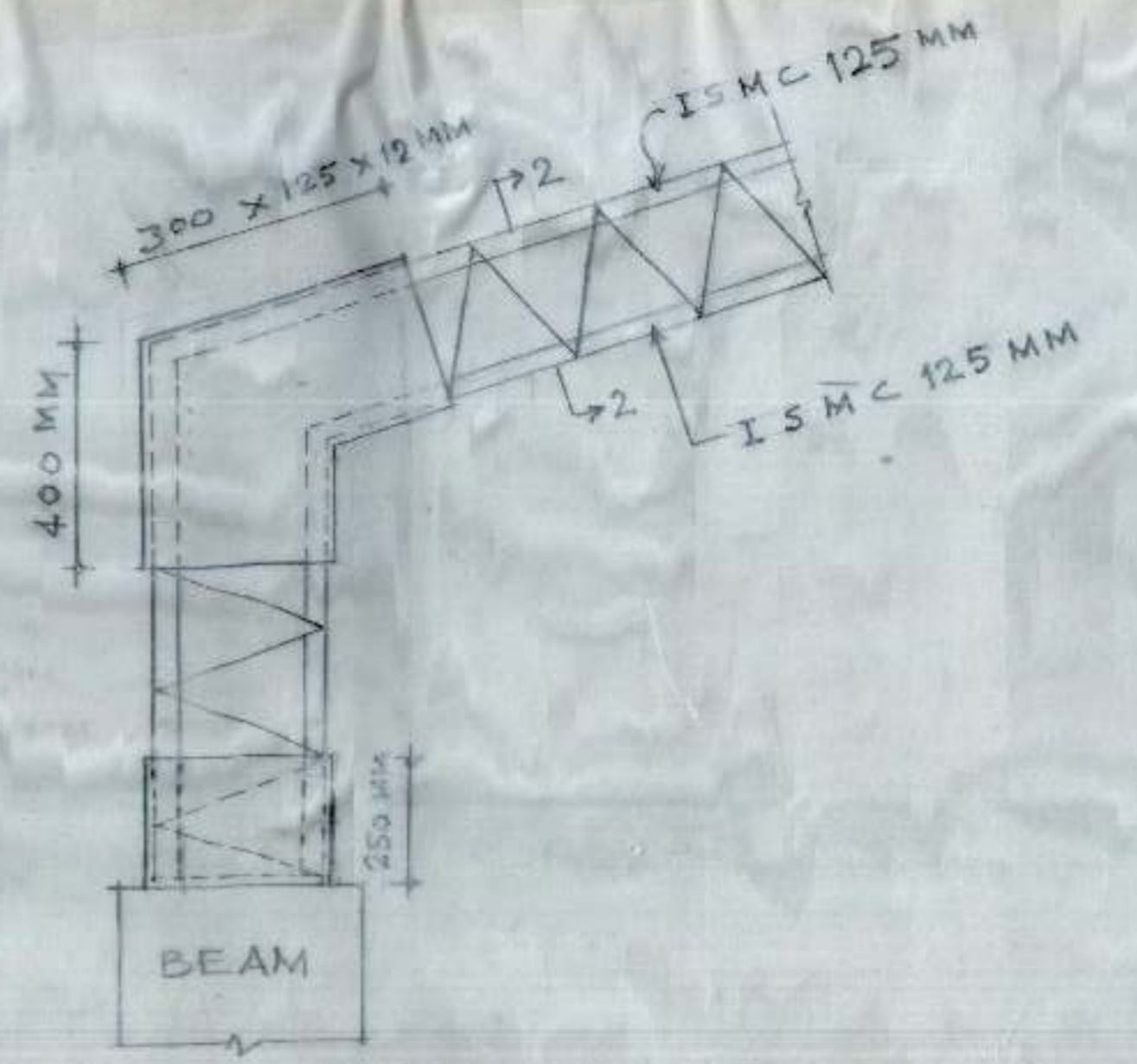
DRG. No. 03 Job No. DKS/101 DATE:- MAY, 2002



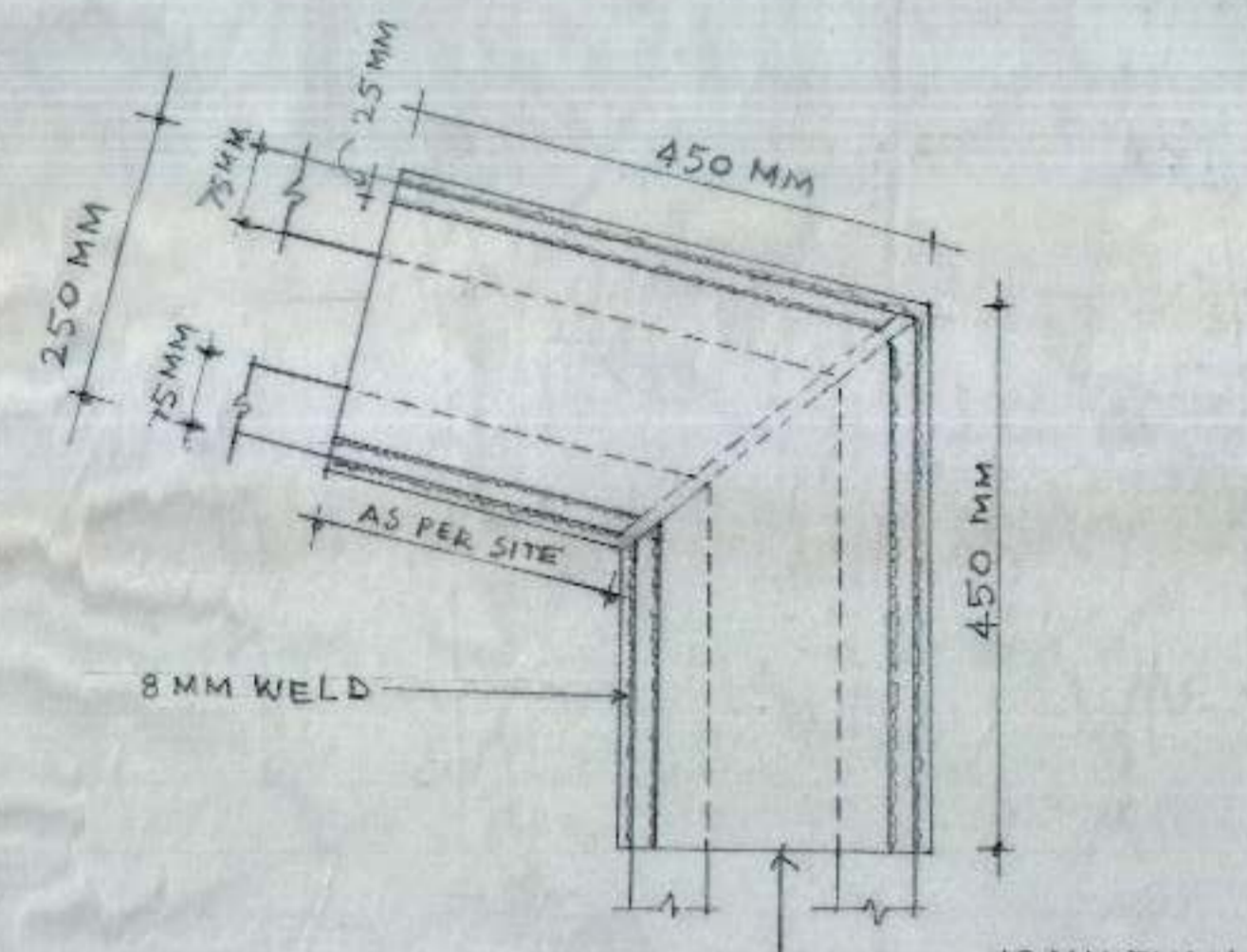
DETAIL OF BRACING



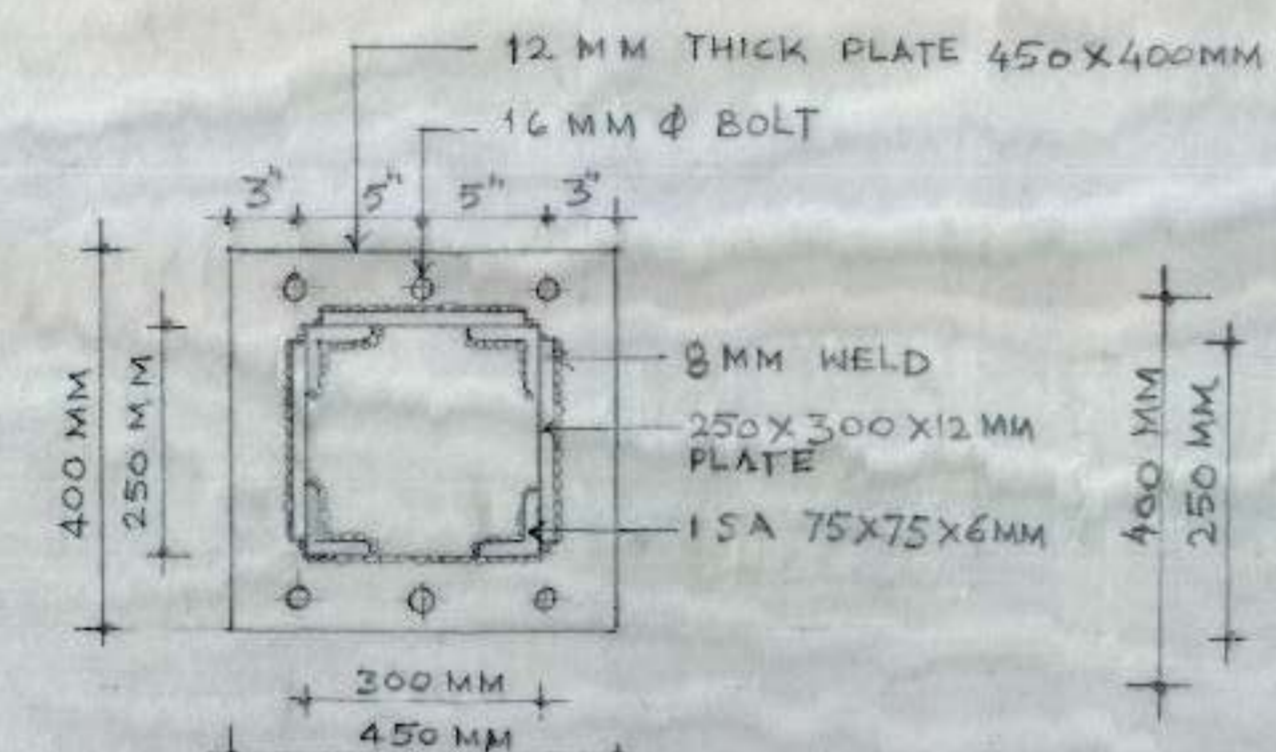
ARRANGEMENT SHOWING PURLIN CONNECTION ON TRUSS PORTAL



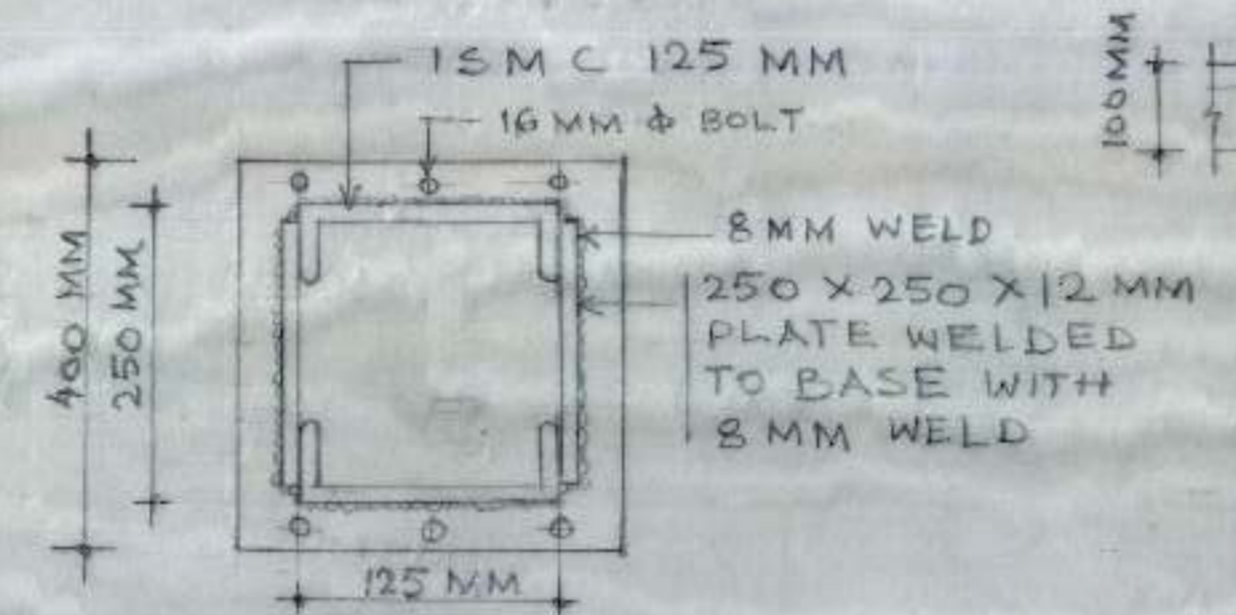
ELEVATION OF DETAIL 'B'



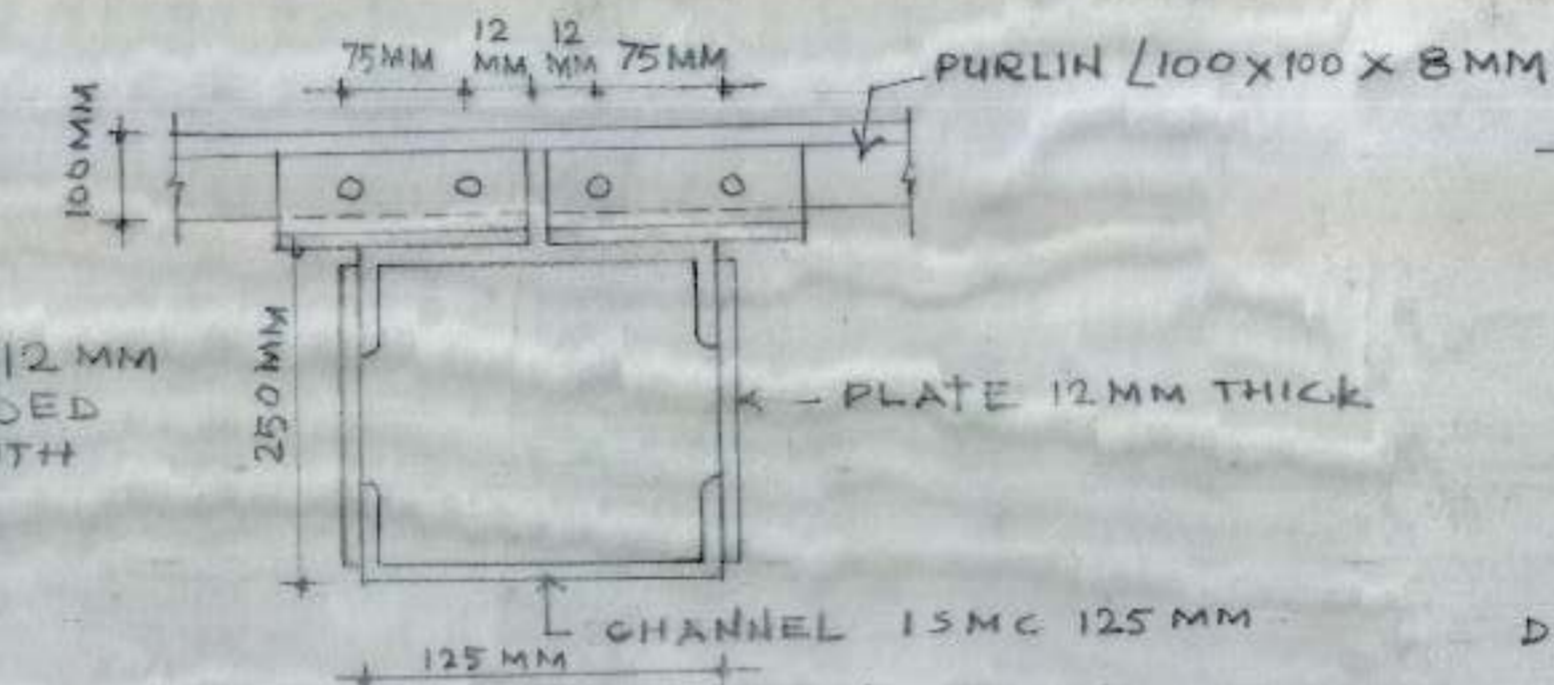
DETAIL 'D' SHOWING KNEE JOINT OF MAJOR PORTAL



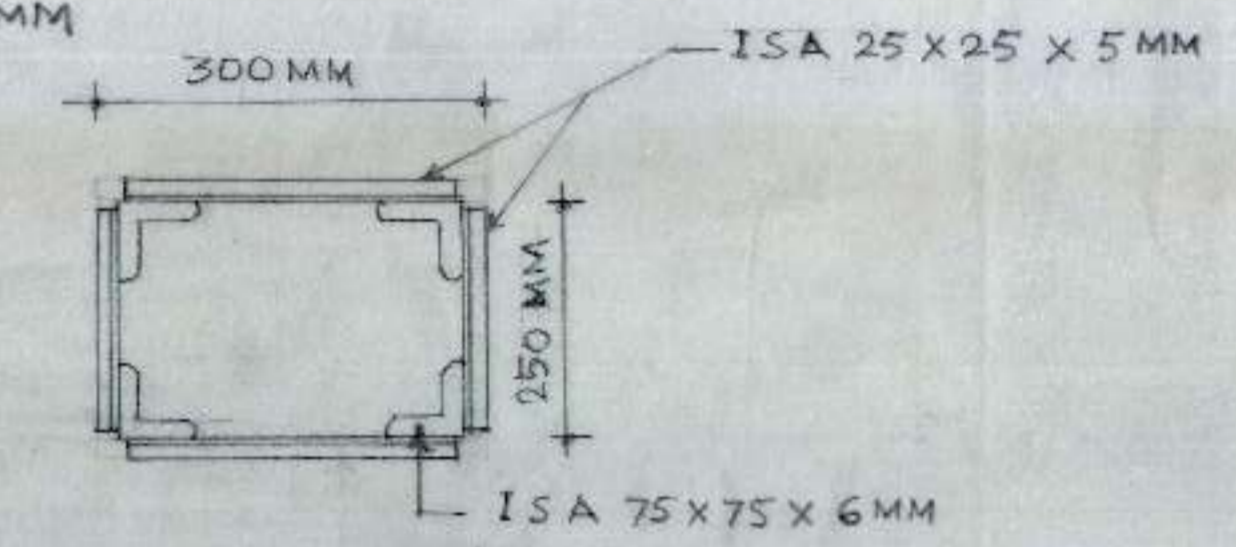
BASE PLATE OF MAIN PORTAL DETAIL - A



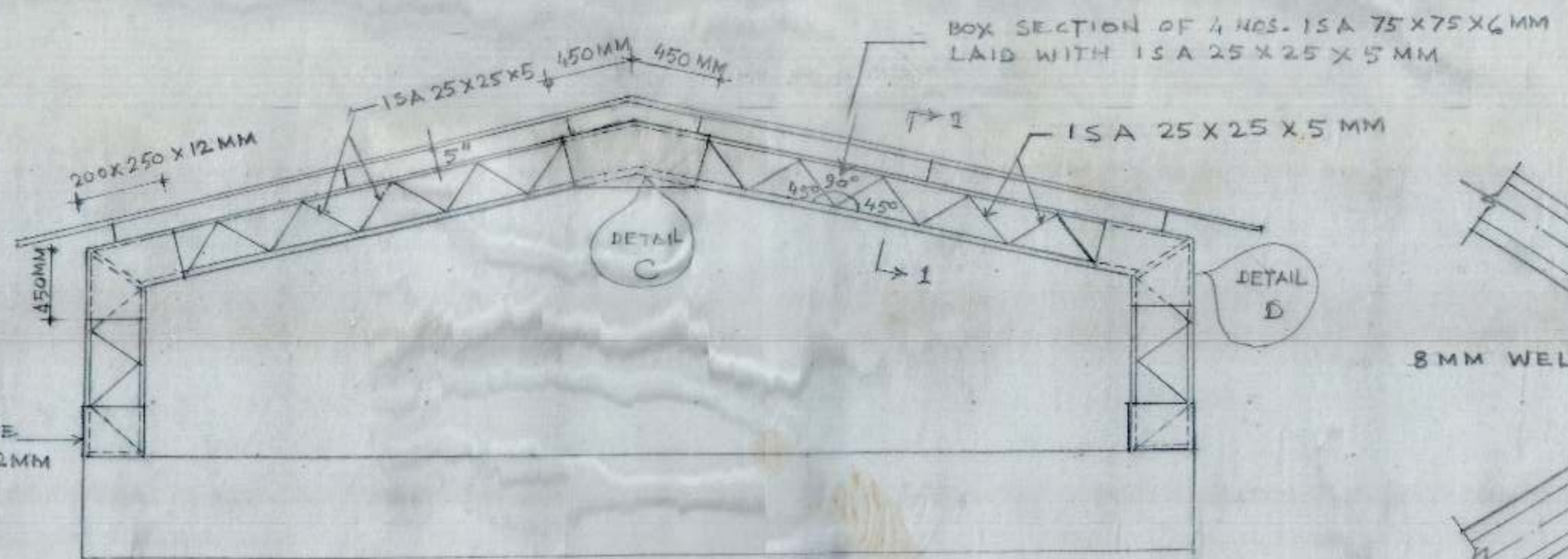
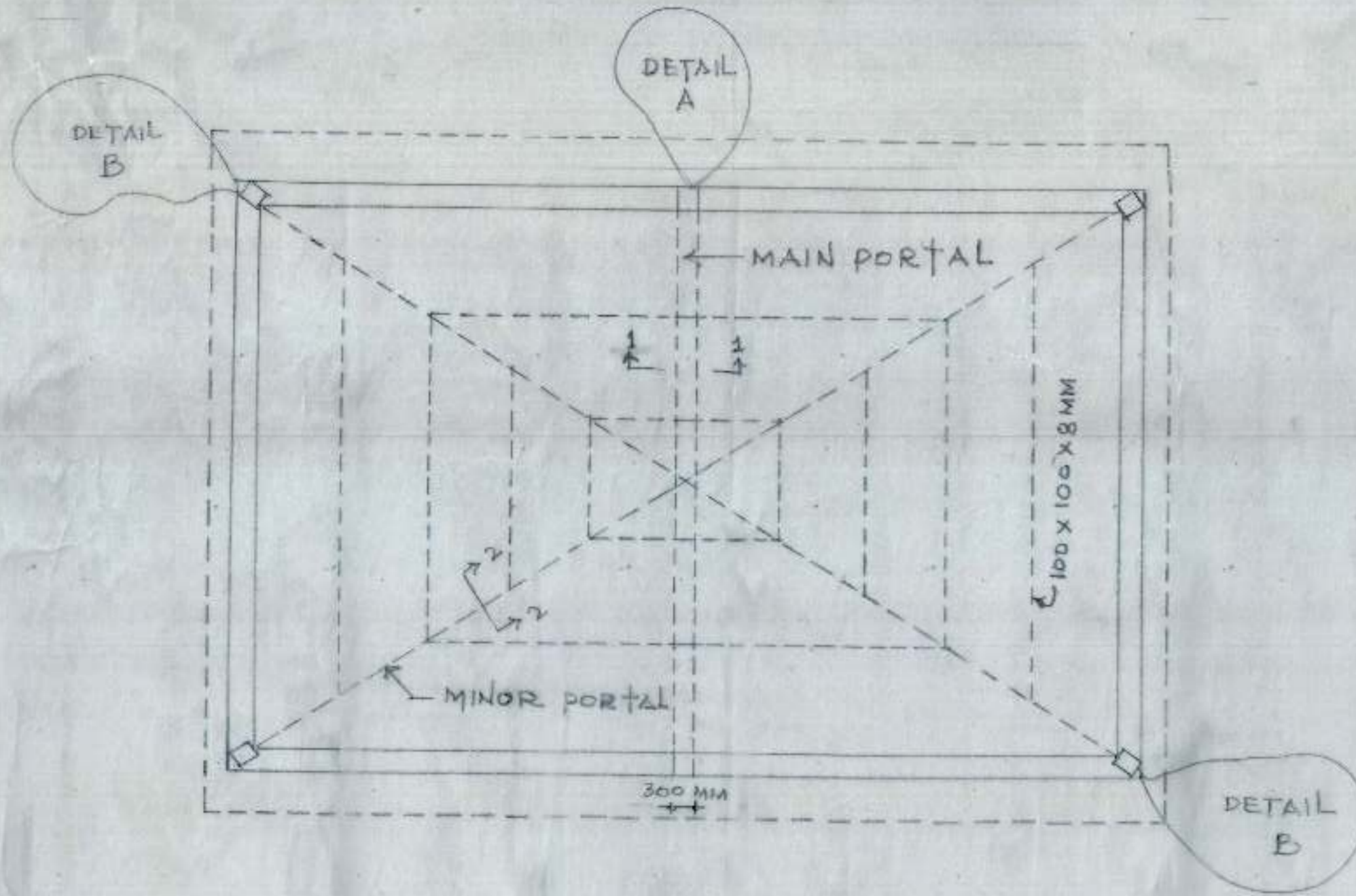
BASE PLATE OF MINOR PORTAL DETAIL - B



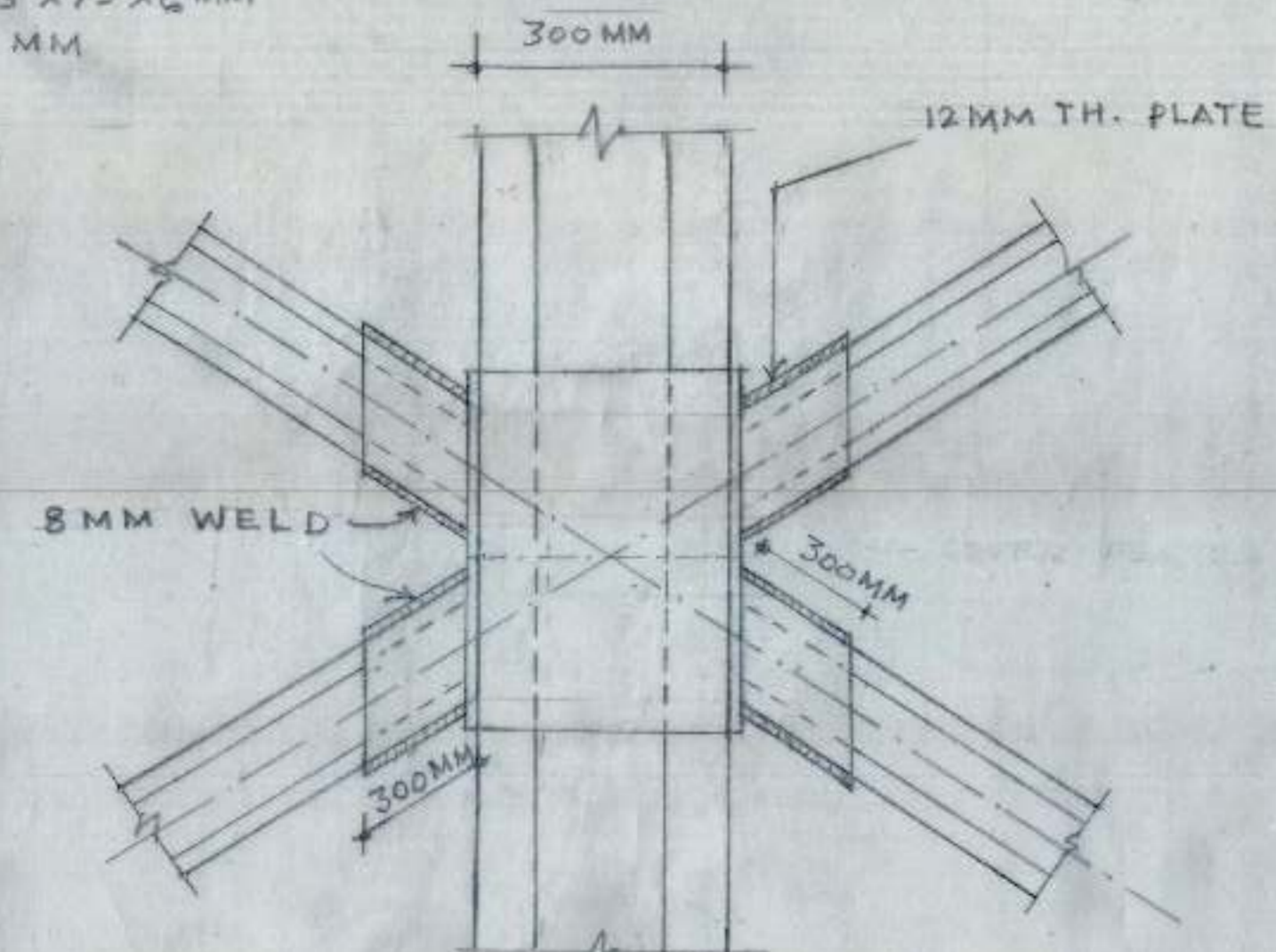
ARRANGEMENT SHOWING PURLIN DETAIL ON MINOR PORTAL SECTION 2-2



DETAIL OF MAIN PORTAL SECTION - 1-1



ELEVATION OF MAIN PORTAL



PLAN DETAIL 'C' AT TOP SHOWING CONNECTION OF MAJOR AND MINOR PORTAL

COVERED PLATFORM FOR SUBZI MANDI REHRI PHARI ASSOCIATION SECTOR - 39 CHANDIGARH.

DETAIL OF TRUSS ROOF

M/S DINESH KUMAR SHARMA 615/1, SECTOR 41A CHANDIGARH

ENGINEER

Dinesh Kumar

DRG. No.	Job No.	DATE
04	DKS 101	MAY 2002
	CHB-118	