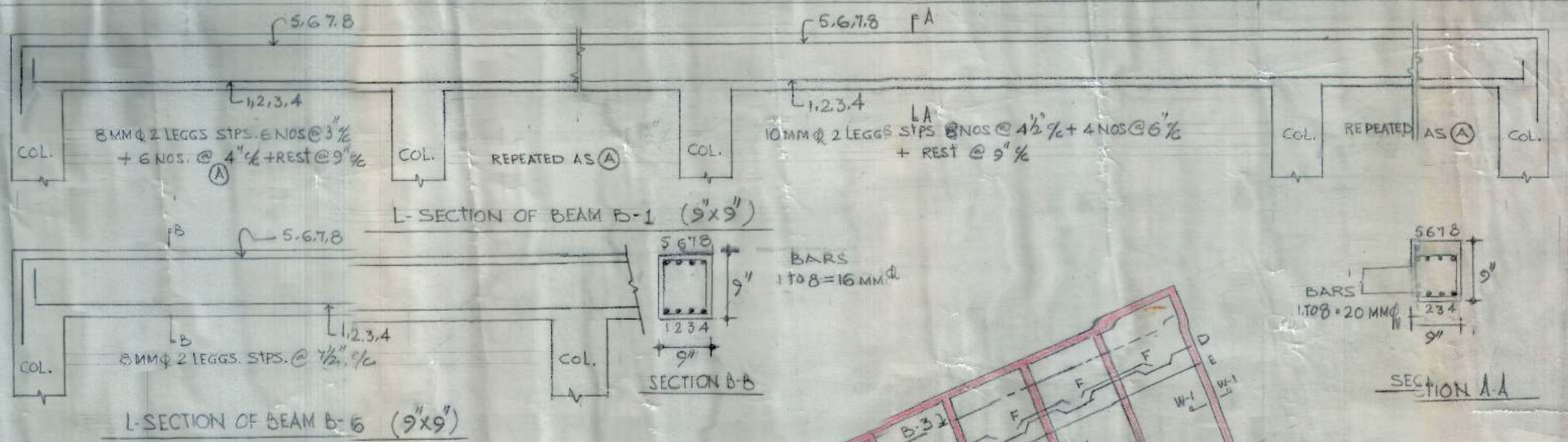
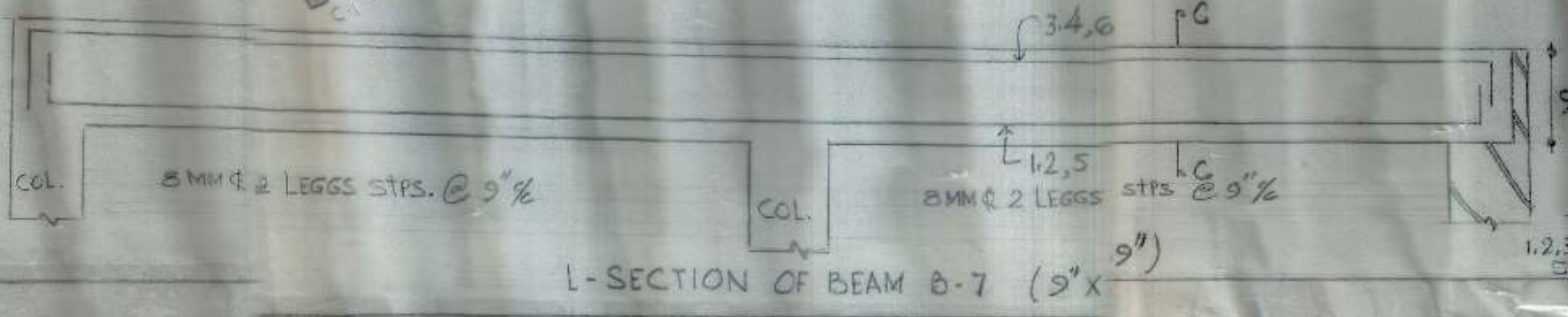
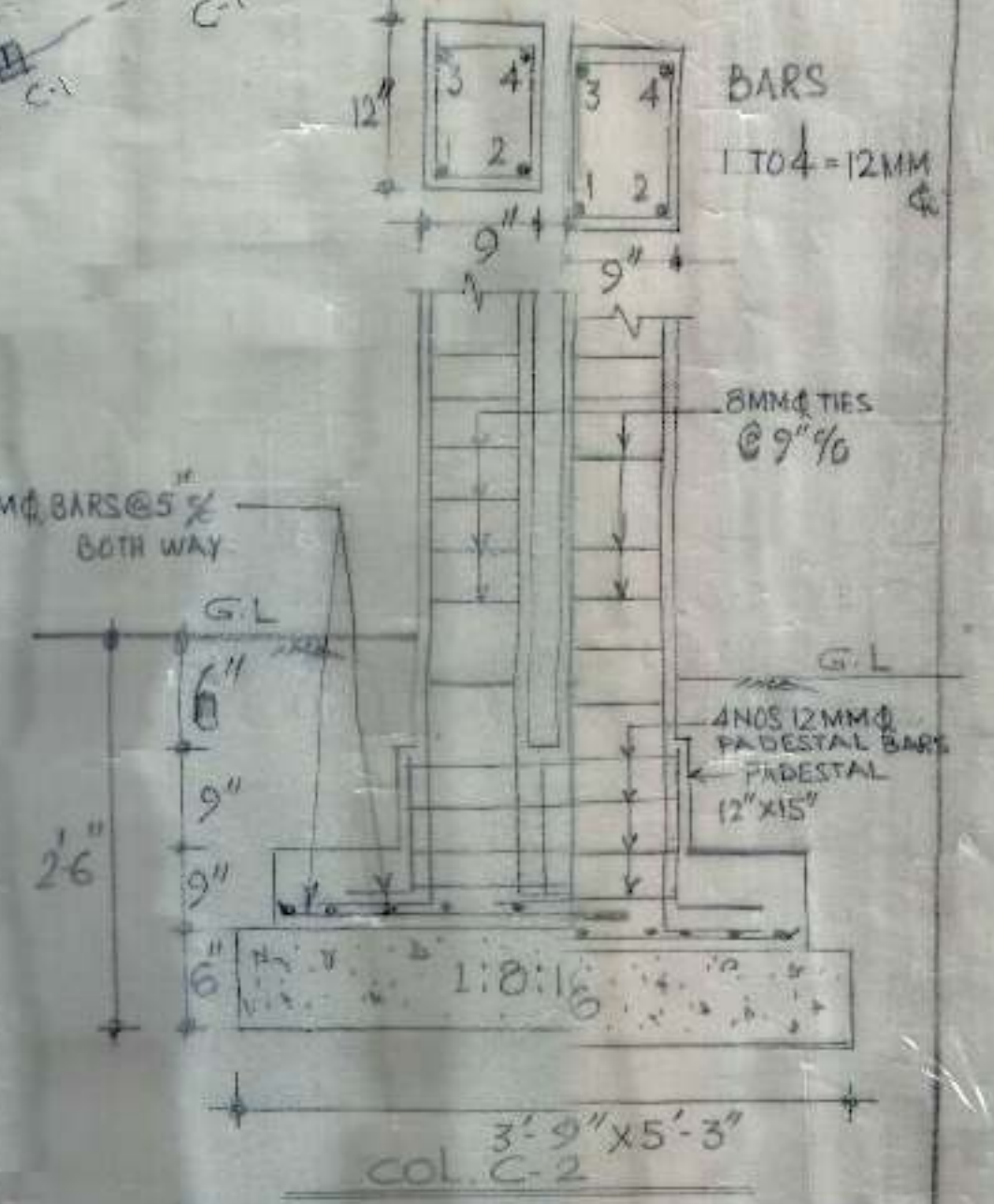
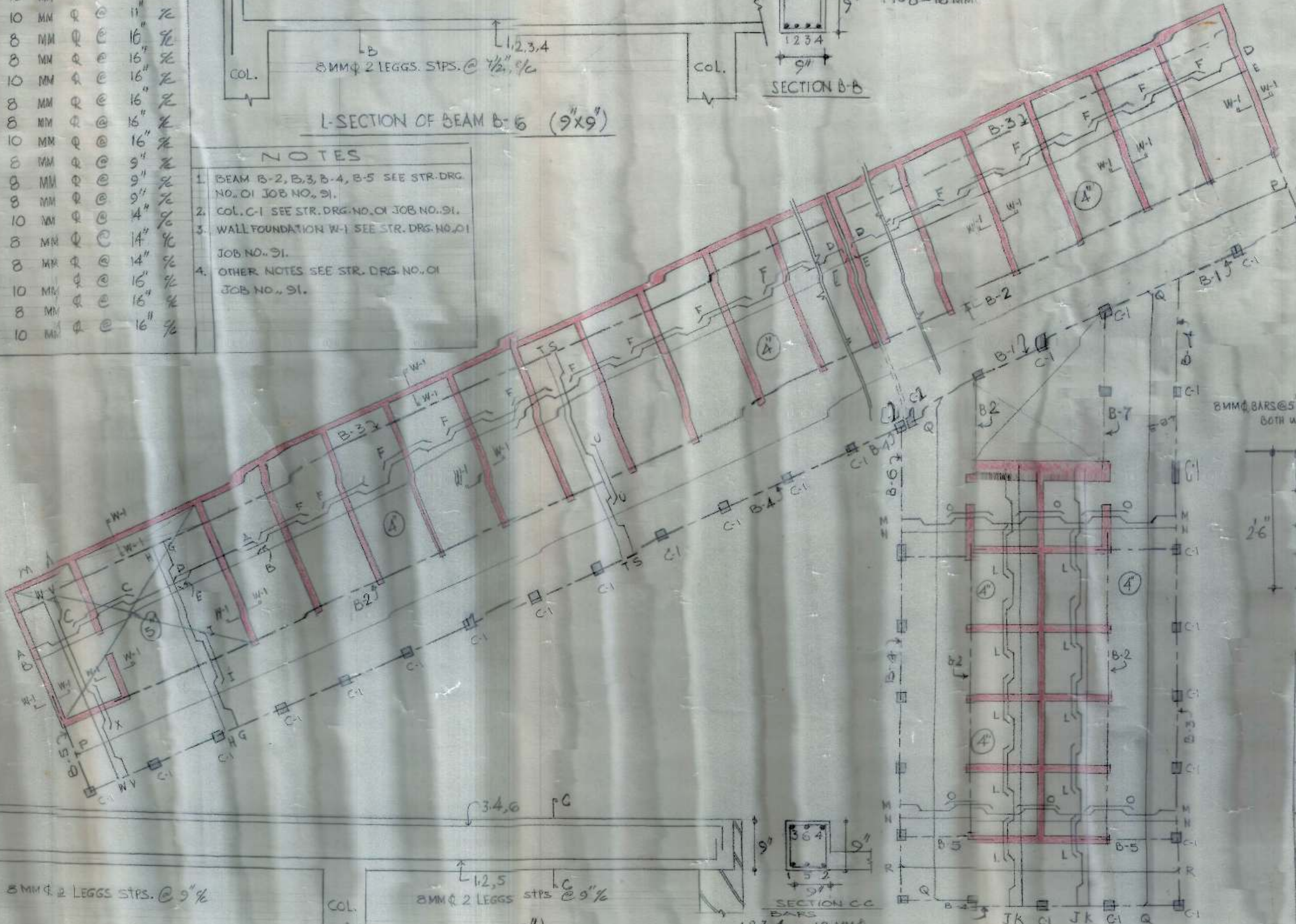


BARS IN SLAB					
A	10	MM	Q	@	15" 1/2
B	10	MM	Q	@	15" 1/2
C	10	MM	Q	@	15" 1/2
D	10	MM	Q	@	14" 1/2
E	8	MM	Q	@	14" 1/2
F	8	MM	Q	@	14" 1/2
G	10	MM	Q	@	11" 1/2
H	10	MM	Q	@	11" 1/2
I	10	MM	Q	@	11" 1/2
J	8	MM	Q	@	16" 1/2
K	8	MM	Q	@	16" 1/2
L	10	MM	Q	@	16" 1/2
M	8	MM	Q	@	16" 1/2
N	8	MM	Q	@	16" 1/2
O	10	MM	Q	@	16" 1/2
P	8	MM	Q	@	9" 1/2
Q	8	MM	Q	@	9" 1/2
R	8	MM	Q	@	9" 1/2
S	10	MM	Q	@	4" 1/2
T	8	MM	Q	@	14" 1/2
U	8	MM	Q	@	14" 1/2
V	10	MM	Q	@	16" 1/2
W	8	MM	Q	@	16" 1/2
X	10	MM	Q	@	16" 1/2



- NOTES**
1. BEAM B-2, B-3, B-4, B-5 SEE STR. DRG. NO. 01 JOB NO. 91.
  2. COL. C-1 SEE STR. DRG. NO. 01 JOB NO. 91.
  3. WALL FOUNDATION W-1 SEE STR. DRG. NO. 01 JOB NO. 91.
  4. OTHER NOTES SEE STR. DRG. NO. 01 JOB NO. 91.



E.E.	C.E.
<i>[Signature]</i> A.E.C.	<i>[Signature]</i> DRAFTSMAN
DETAIL OF SLAB	JOB NO 92
SHOPPING COMPLEX IN PHASE III MANIMAJRA NEAR H.NO., 5904 & 5017 TO 6026	
DRG NO. 01	DATE 7/95