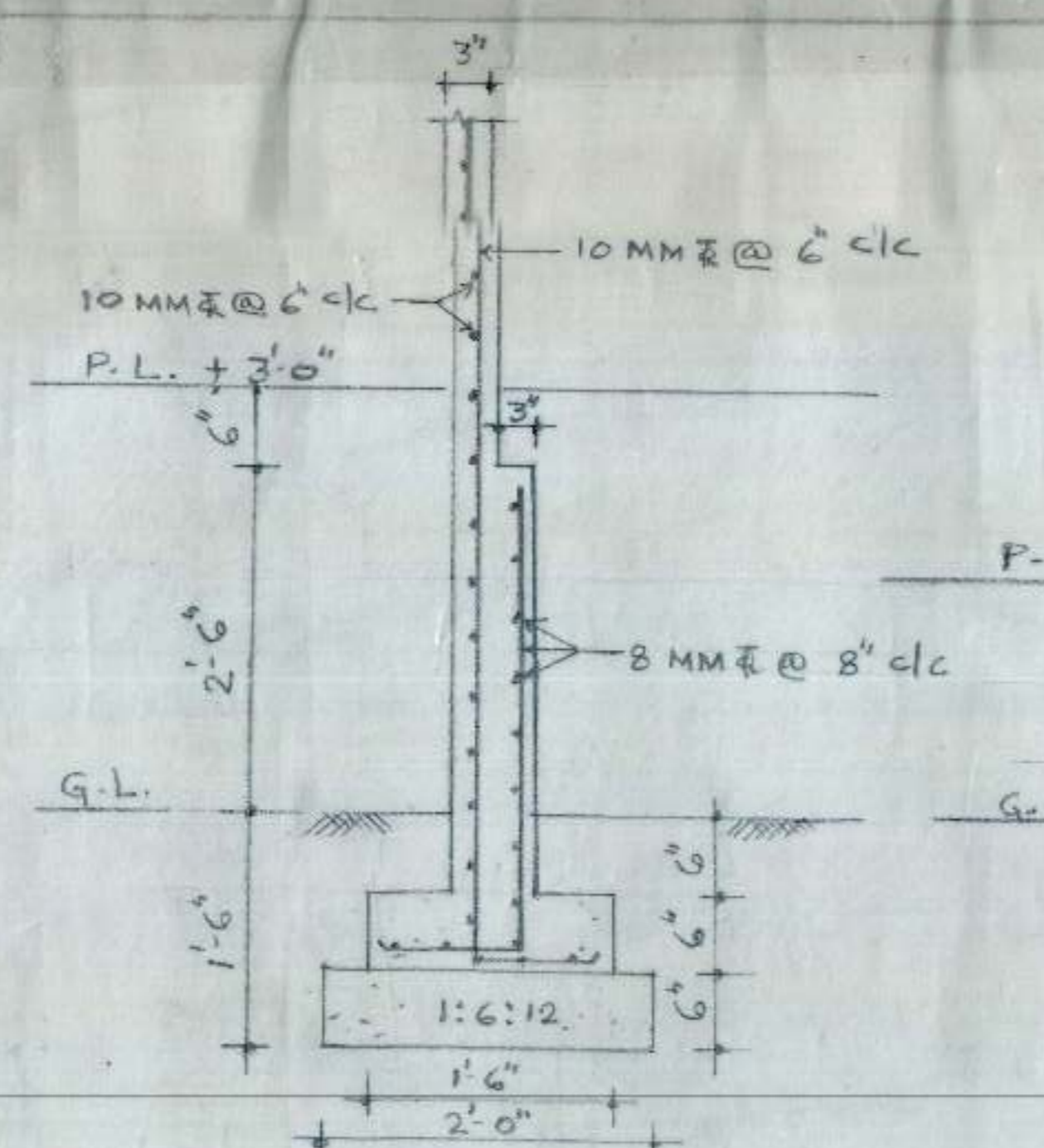
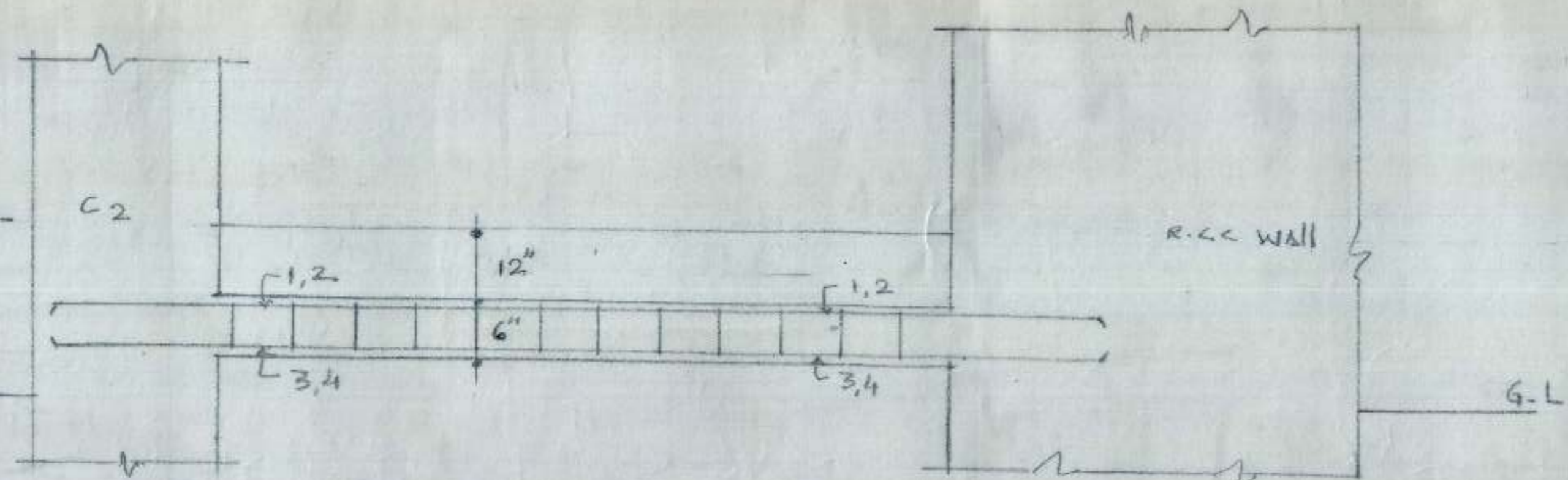


FOUNDATION DETAIL FOR W3

FOUNDATION DETAIL FOR W-2

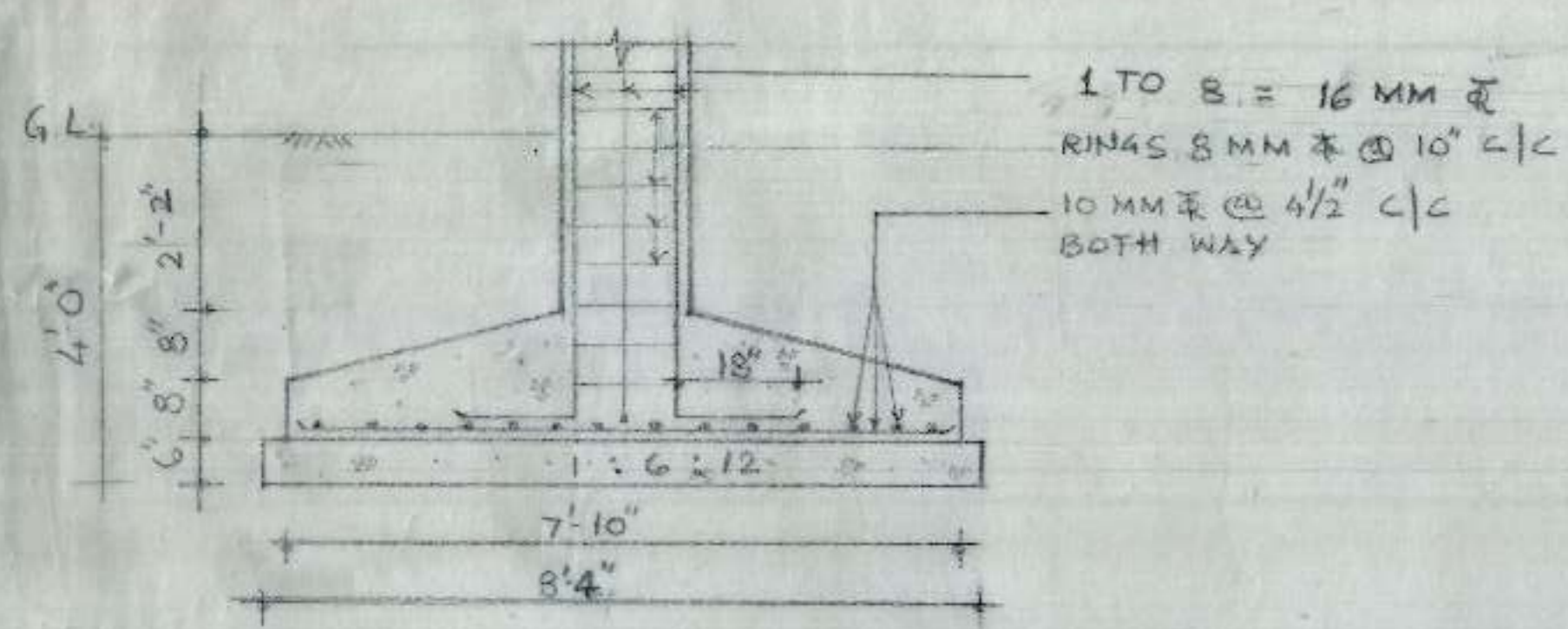
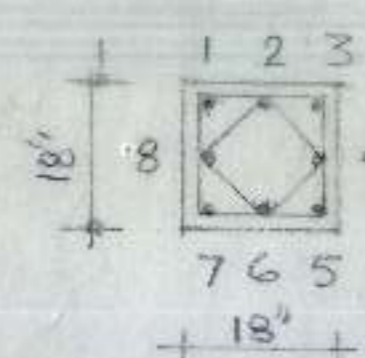
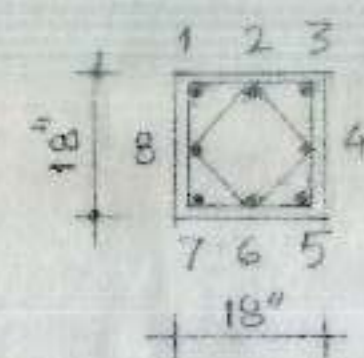


FOUNDATION DETAIL FOR W-1

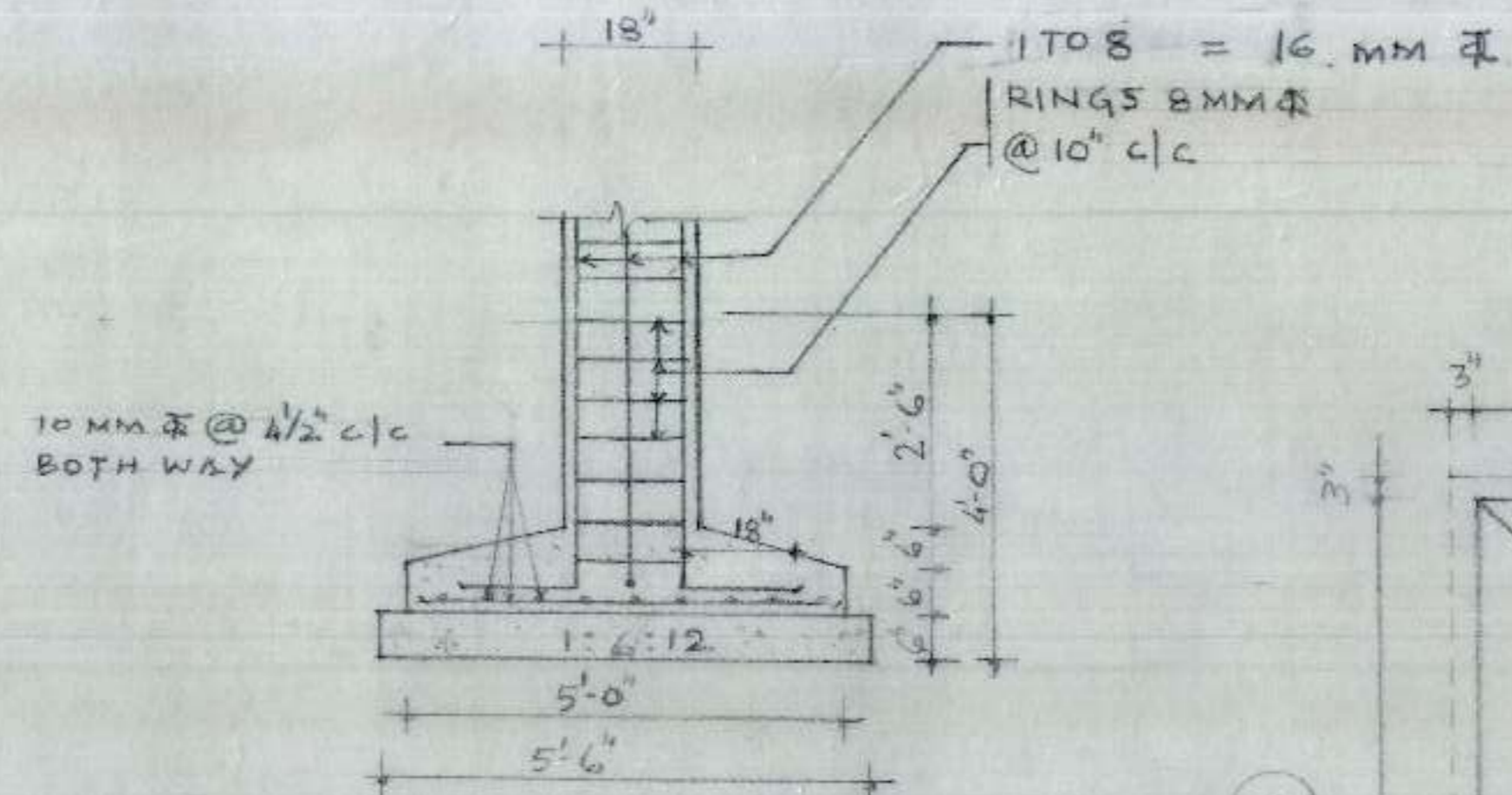


BEAM FB-1 (9' x 6")

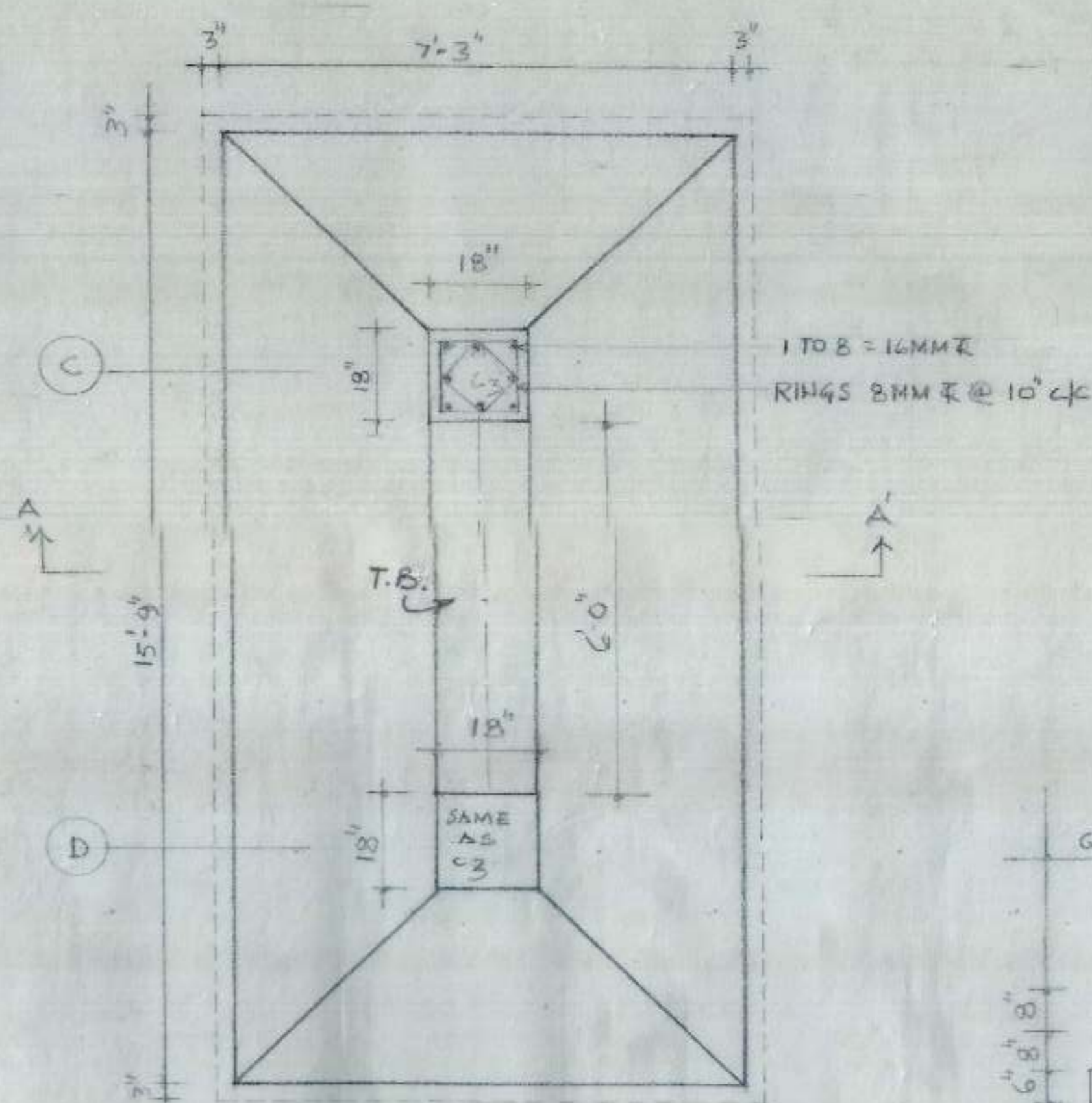
REINF. IN FB-1  
 1 TO 4 = 10 MM  $\bar{\bar{}}$   
 RINGS 8MM  $\bar{\bar{}}$  @ 6" c/c  
 TH. OUT.



SECTION C1

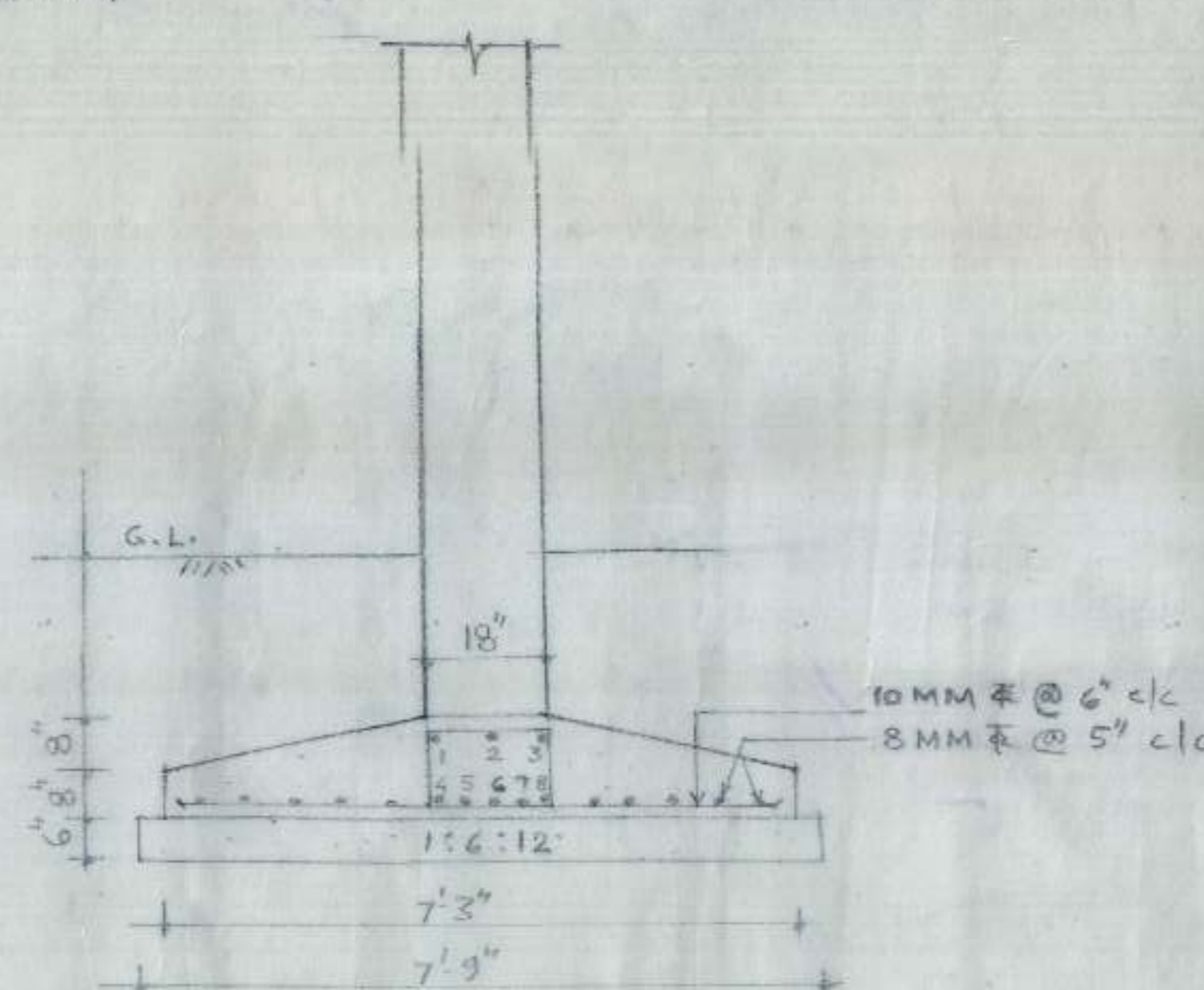


SECTION C2

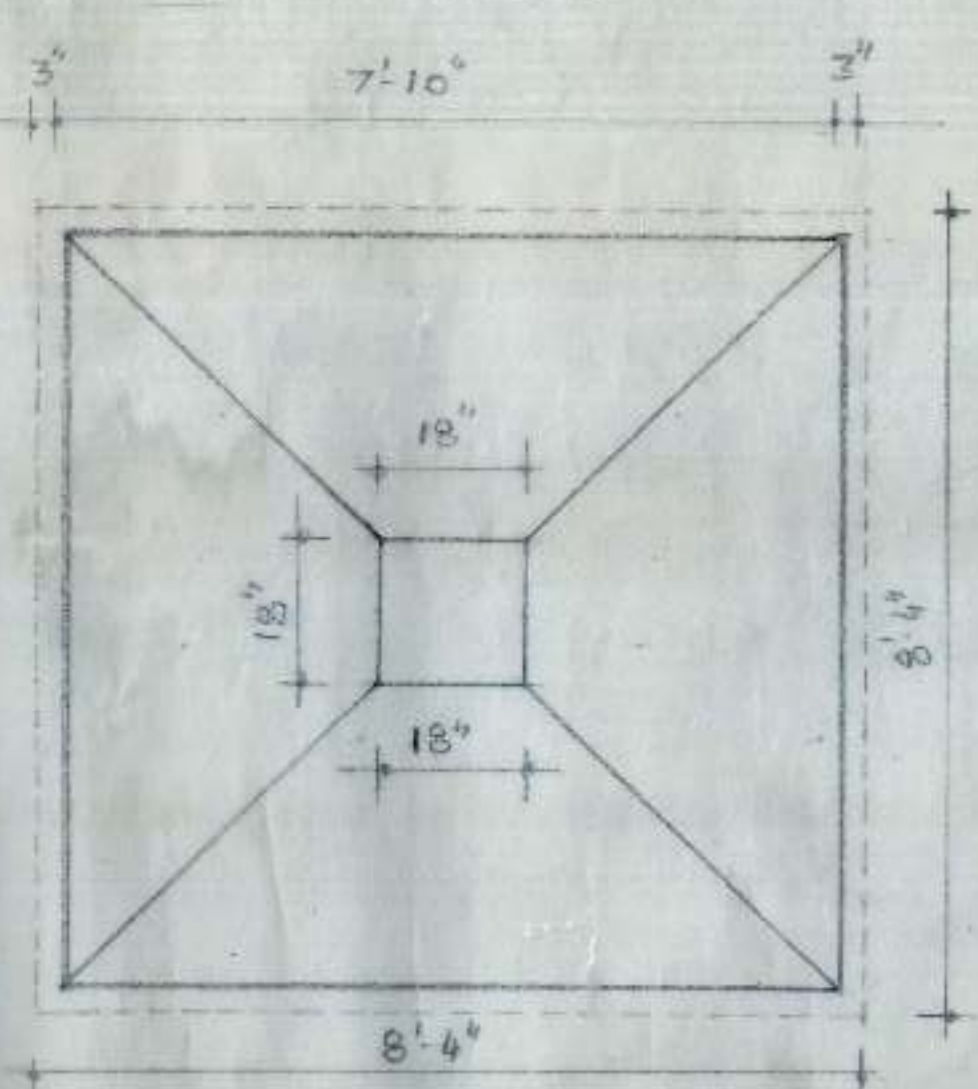


PLAN FOR COMBINED FOOTING C2

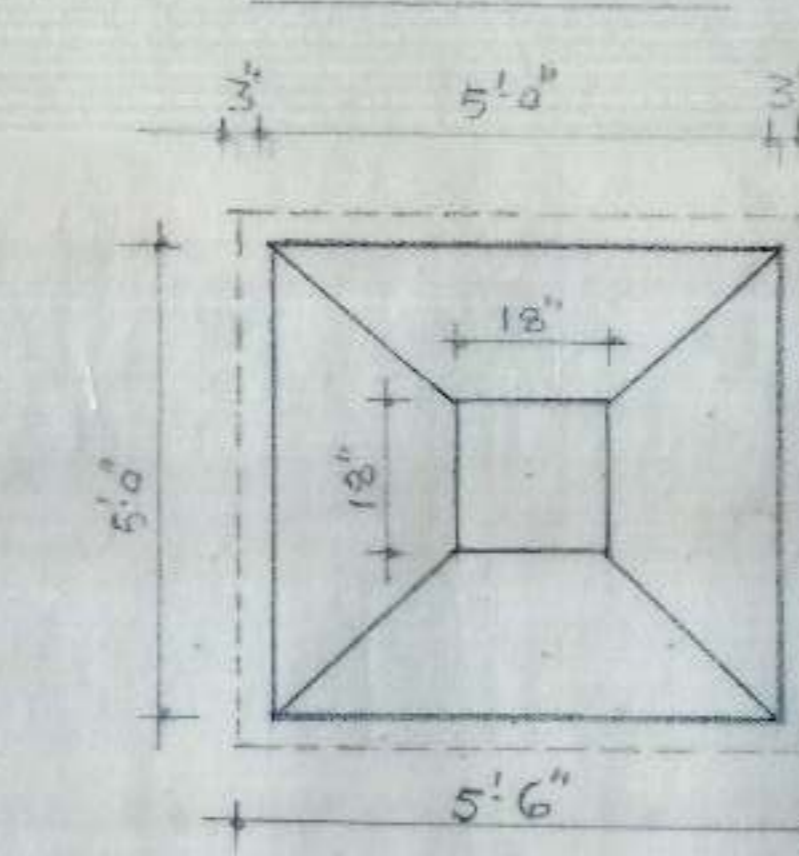
REINF. IN TB  
 1 TO 8 = 20MM  $\bar{\bar{}}$   
 RINGS 8MM  $\bar{\bar{}}$  @ 8" c/c TH. OUT.



SECTION A-A



PLAN FOR COL. C1 FOOTING



PLAN FOR COL. C2 FOOTING

NOTES:

1. DIMENSIONS ARE TO BE READ AND NOT TO BE SCALED OFF.
2. FOR ARCHITECTURAL DIMENSIONS REFER TO ARCHITECTURAL DRAWINGS.
3. BARS USED ARE Fe 415 CONFORMING TO IS 1786 - 1979.
4. CONC. USED IS M-20.
5. ALL FOOTINGS SHOULD REST ON FIRM AND CONSOLIDATED SOIL.
6. CLEAR COVER TO REINF. IN CASE OF  
 i. FOUNDATIONS = 2"  
 ii. COLUMNS = 1 1/2"  
 iii. BEAMS = 1"  
 iv. SLAB = 12mm
7. LAP/ANCHORAGE LENGTH IN CASE OF  
 (i) BEAMS & SLAB S = 58 d  
 (ii) COLUMNS = 45 d WHERE d IS DIA OF BAR
8. NOT MORE THAN 50% OF BARS ARE TO BE LAPPED AT ONE POSITION.
9. CEMENT CONCRETE SHALL BE MACHINE MIXED.
10. TIES IN COLUMNS BE STAGGERED.
11. FOUNDATION SHALL BE LAID ON OVER A WALL COMPACTED SUB GRADE. ALL PATCHES, BURROW, ORGANIC MATTER SHALL BE TAKEN OUT AND RESULTING SPA CE BE FILLED WITH F.C.C. 1:6:12.
12. ALL STRUCTURAL STEEL SHALL CONFORMED TO IS 226 - 1975.

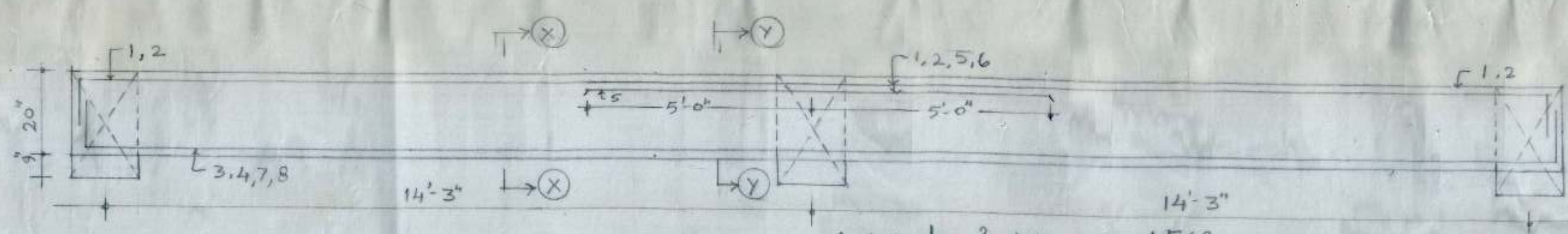
COVERED PLATFORM FOR  
 SUBZI MANDI REHRI PHARI  
 ASSOCIATION SECTOR-26  
 CHANDIGARH.

FOUNDATION DETAILS:-  
 C1, C2, C3, W1, W2 FB-1

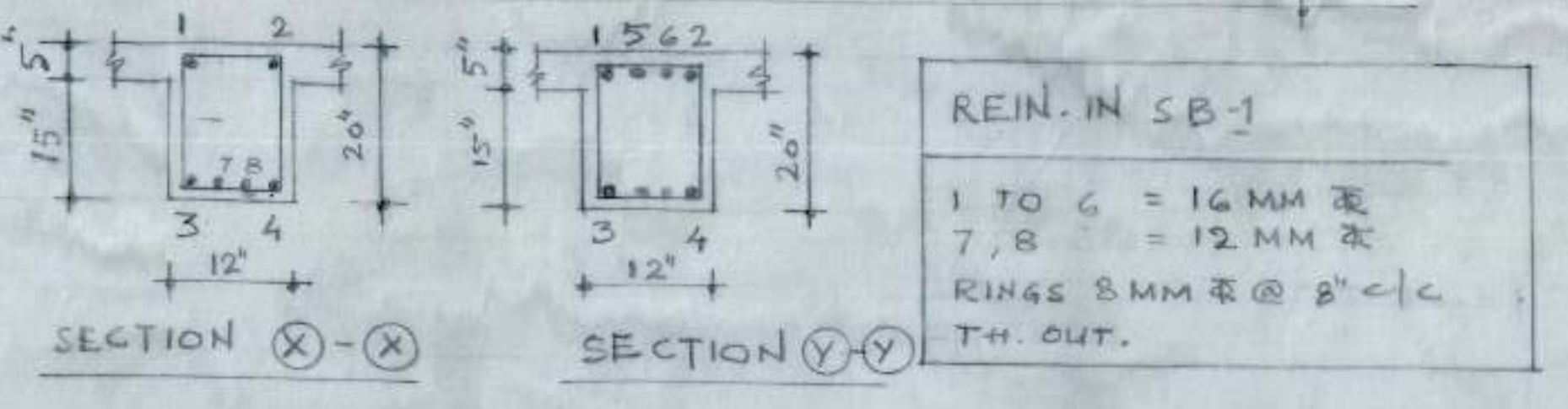
M/S DINESH KUMAR SHARMA  
 615, SECTOR:-41A, CHANDIGARH

ENGINEER :-  
 Dinesh Kumar

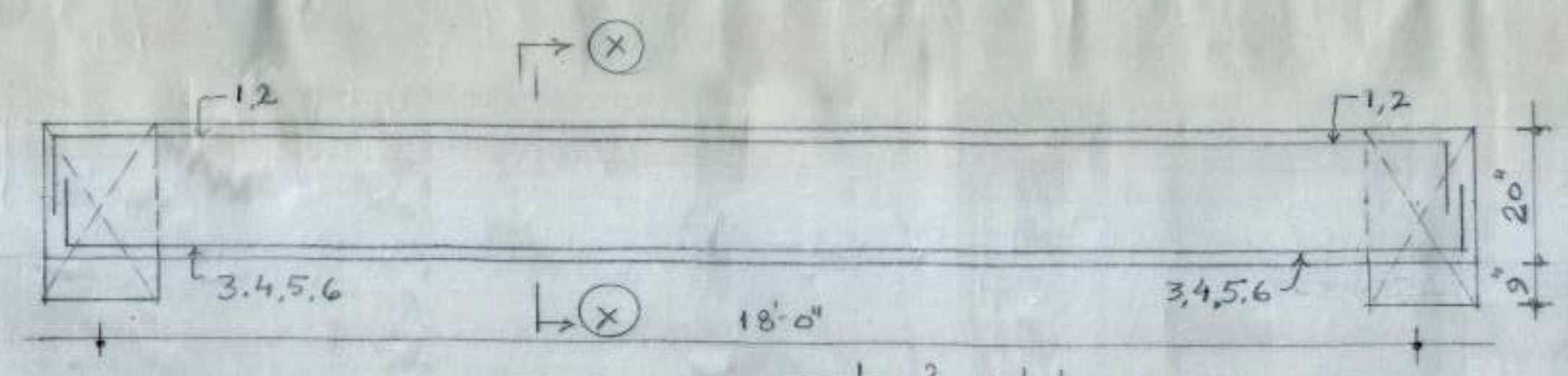
DRG. NO.	JOB NO.	DATE
01	DKS 102	MAY 2002



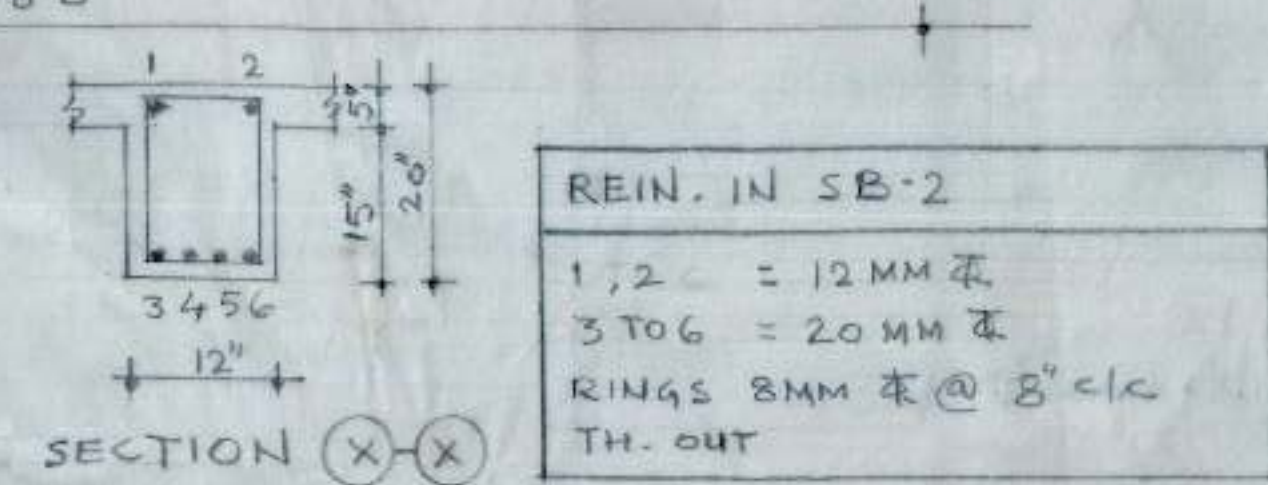
BEAM SB-2



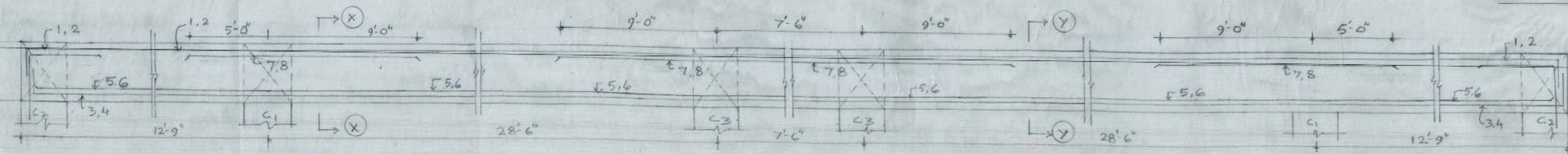
REIN. IN SB-1  
 1 TO 6 = 16 MM ̄  
 7, 8 = 12 MM ̄  
 RINGS 8 MM ̄ @ 8" C/C  
 TH. OUT.



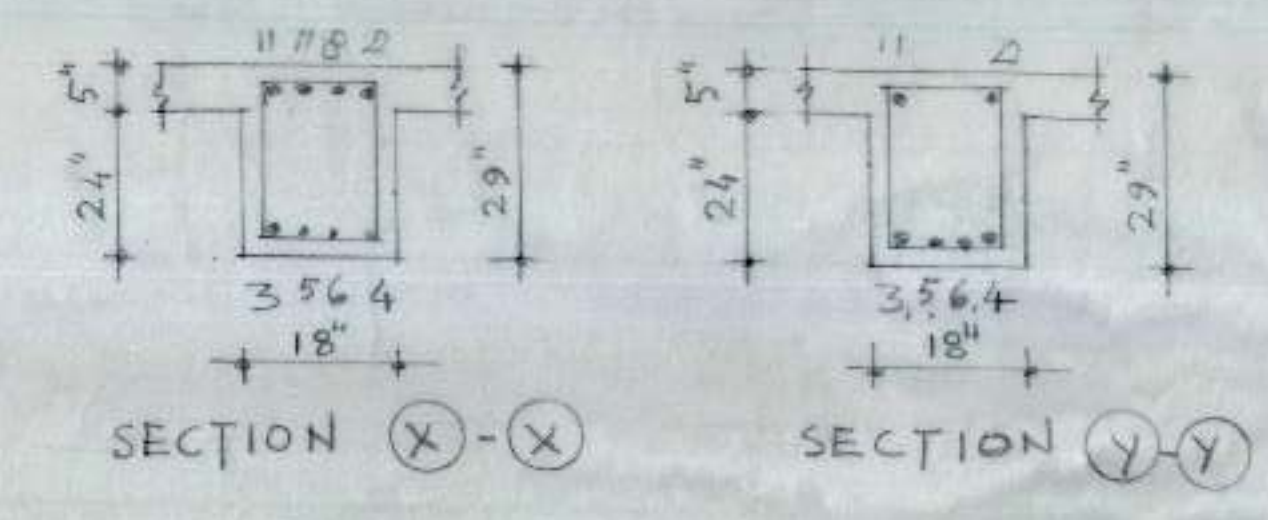
BEAM SB-1



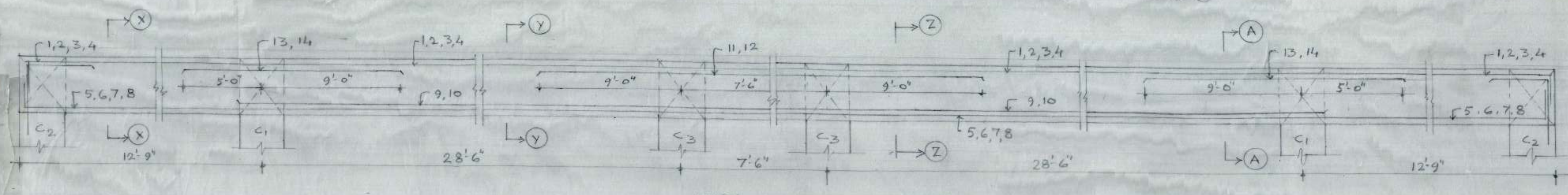
REIN. IN SB-2  
 1, 2 = 12 MM ̄  
 3 TO 6 = 20 MM ̄  
 RINGS 8 MM ̄ @ 8" C/C  
 TH. OUT.



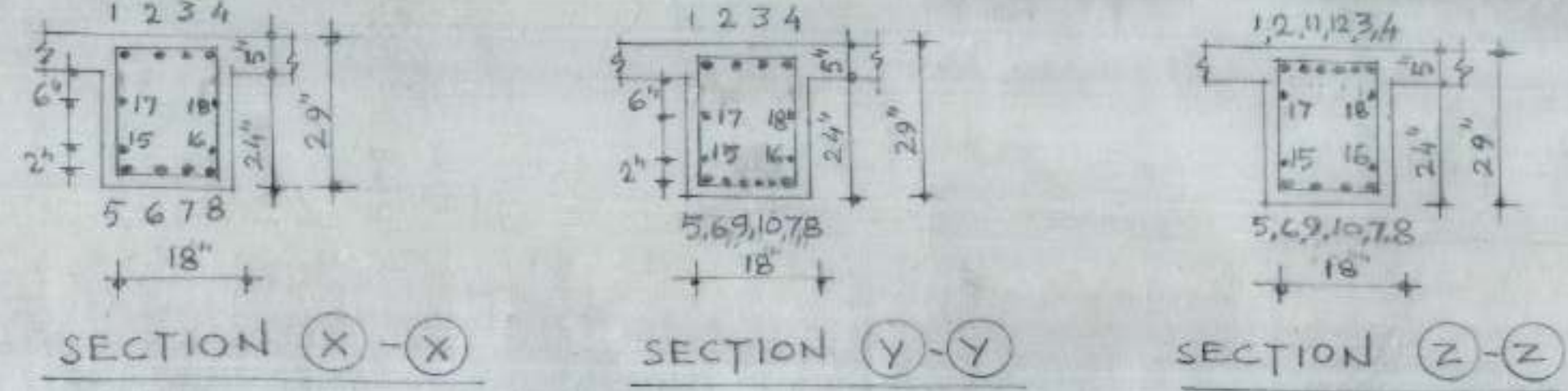
BEAM B-3 (SIDE REINF. NOT SHOWN IN ELEVATION)



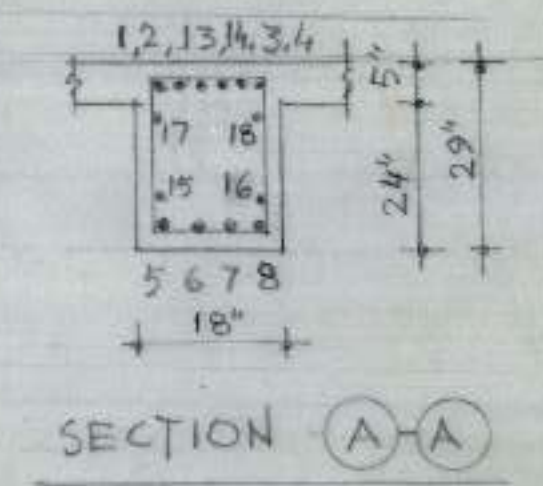
REIN. IN BEAM B-3  
 1 TO 8 = 25 MM ̄  
 RINGS 8 MM ̄ @ 8" C/C  
 TH. OUT.



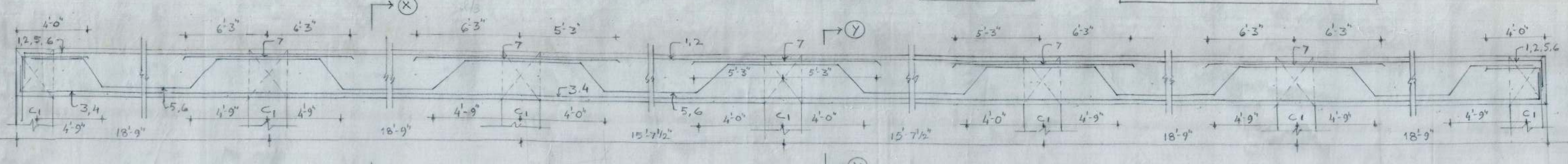
BEAM B-2 (SIDE REINF. NOT SHOWN IN ELEVATION)



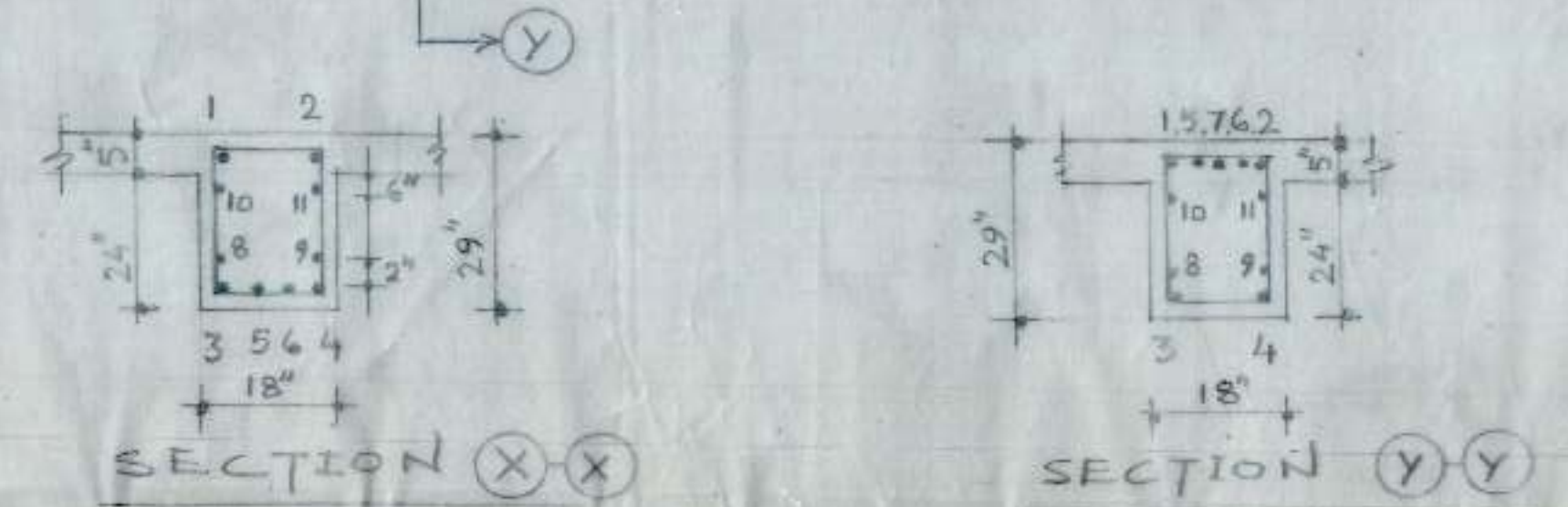
REIN. IN BEAM B-2  
 1 TO 8 = 25 MM ̄  
 9, 10 = 20 MM ̄  
 11, 12, 14 = 16 MM ̄  
 15 TO 18 = 10 MM ̄ SIDE FACE REINF.  
 RINGS 8 MM ̄ @ 8" C/C  
 TH. OUT.



SECTION A-A



BEAM B-1 (SIDE REINF. NOT SHOWN IN ELEVATION)



REIN. IN BEAM B-1  
 1, 2, 3, 4 = 12 MM ̄  
 5, 6, 7 = 16 MM ̄  
 8, 9, 10, 11 = 10 MM ̄ SIDE FACE REINF.  
 RINGS 8 MM ̄ @ 8" C/C  
 TH. OUT.

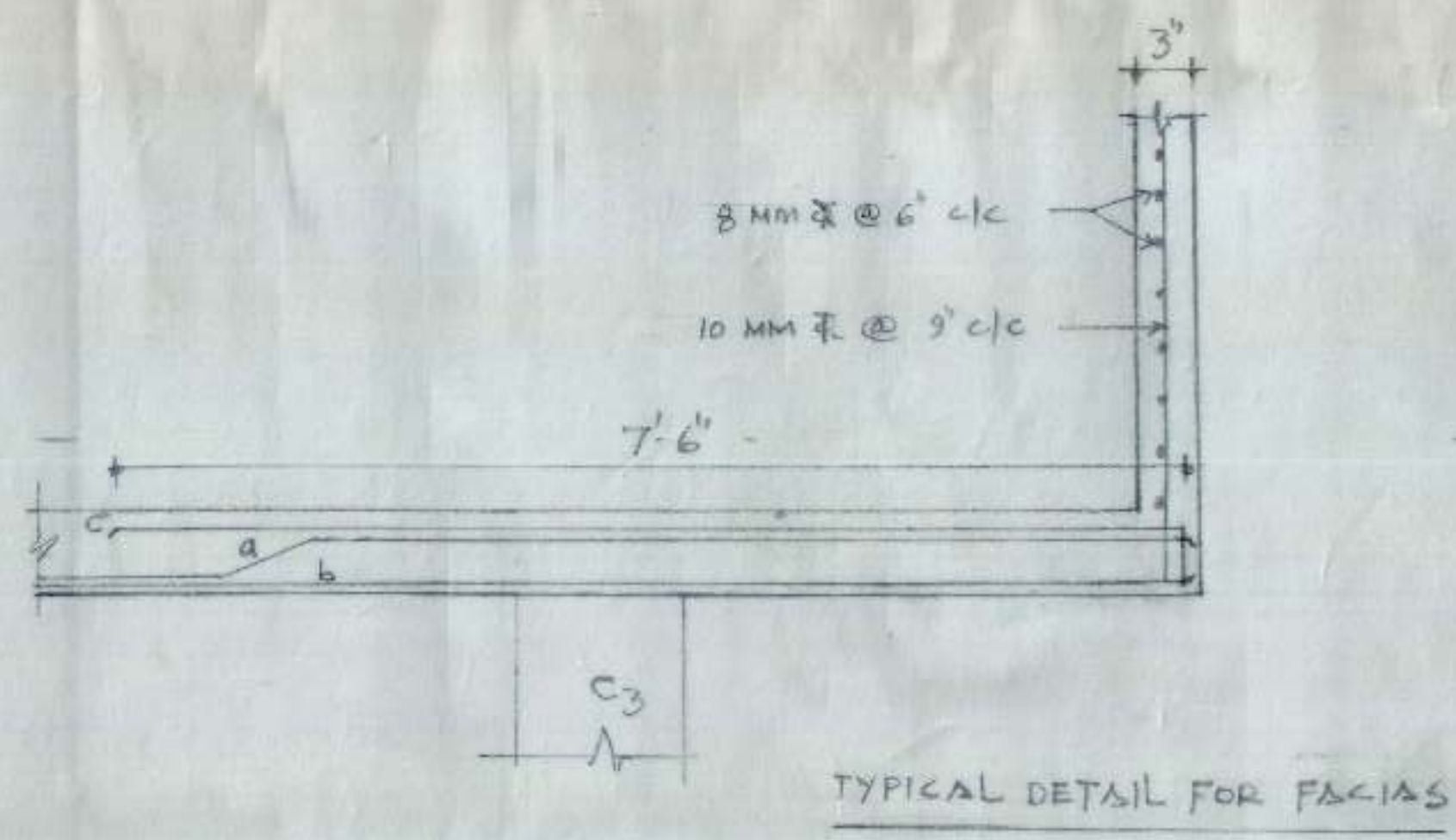
COVERED PLATFORM FOR  
 SUBZI, MANDI REHRI PHARI  
 ASSOCIATION SECTOR-26  
 CHANDIGARH.

BEAMS  
 SB-1, SB-2, B-1, B-2, B-3

M/S DINESH KUMAR SHARMA  
 615/1, SEC. 41A, CHANDIGARH

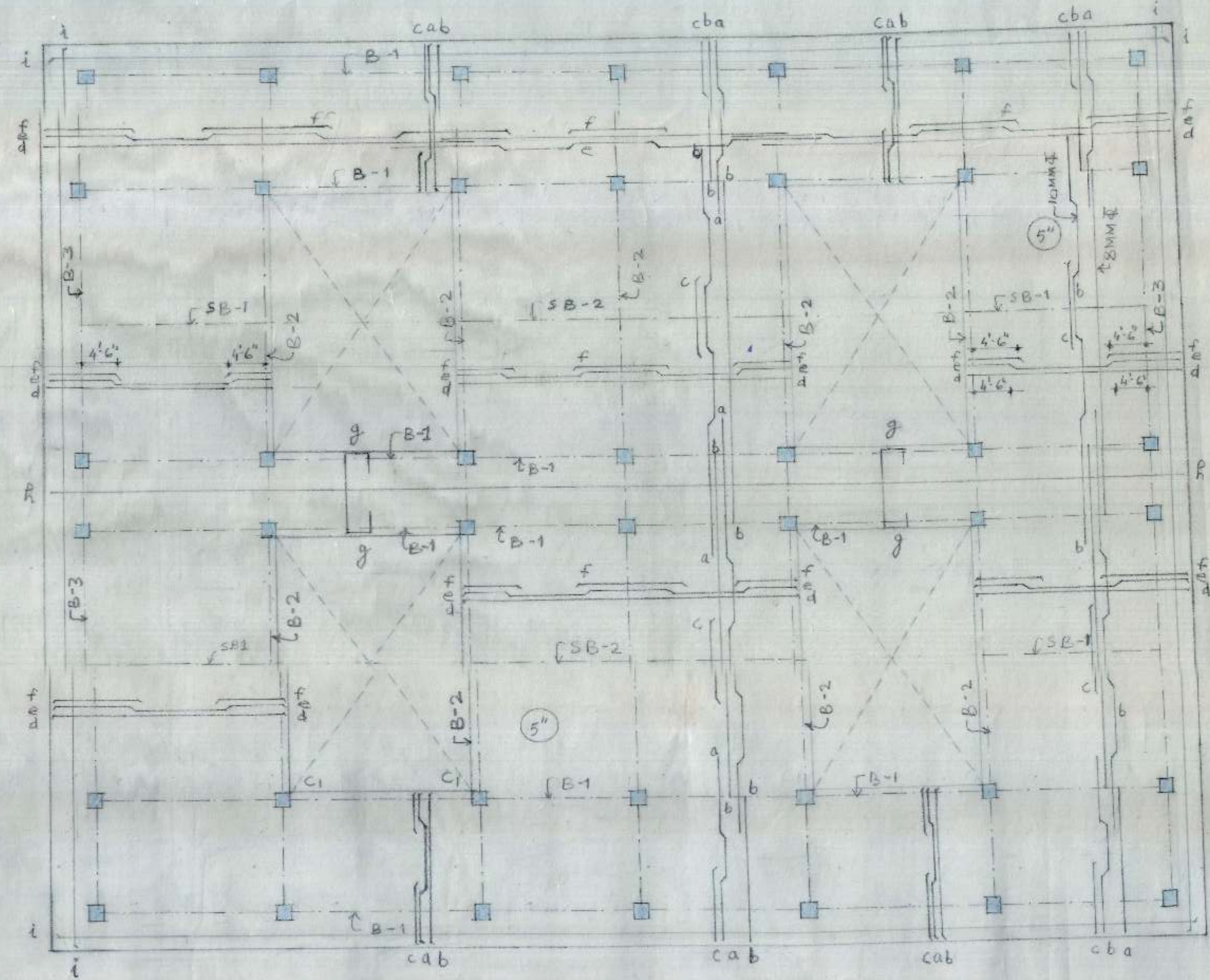
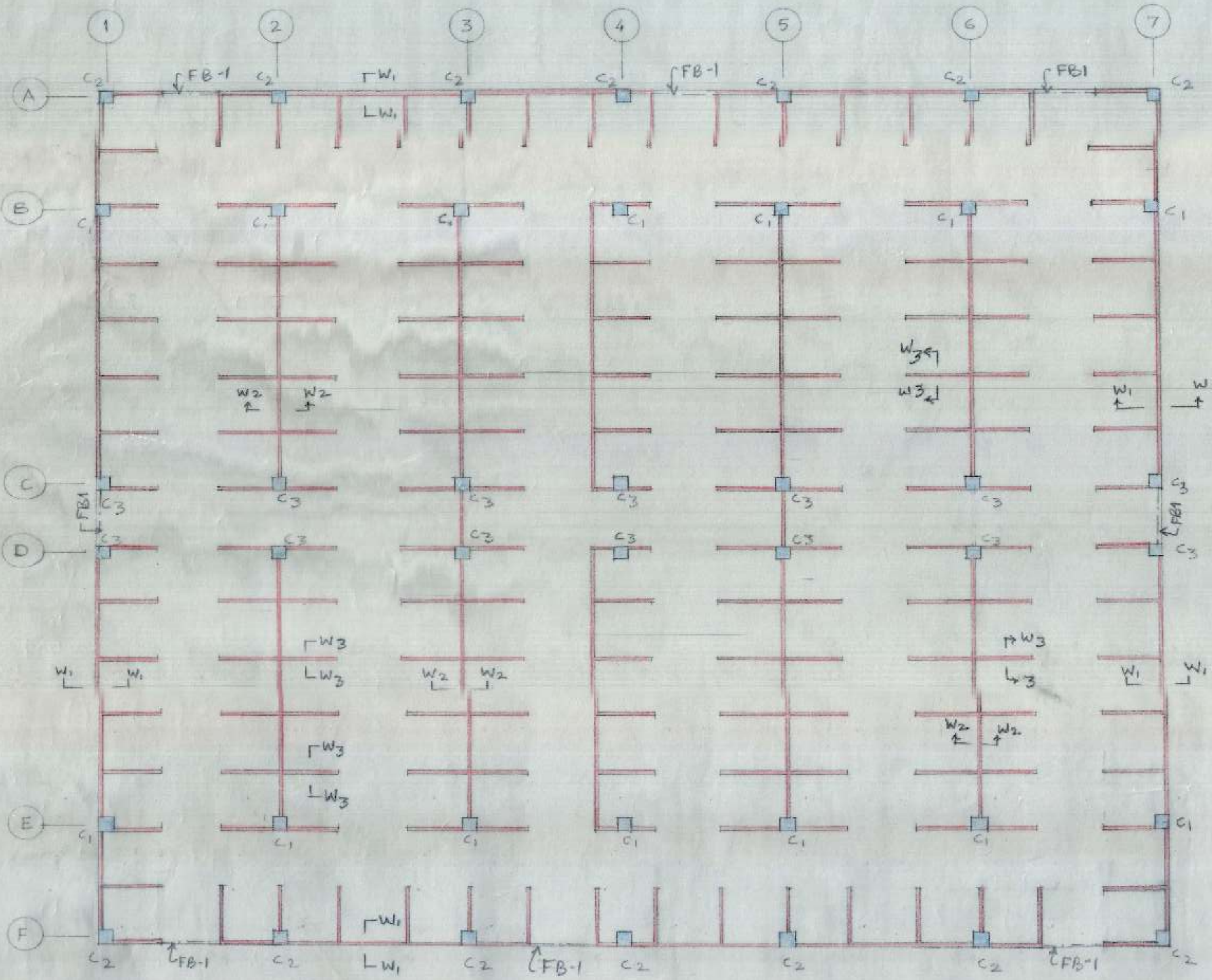
ENGINEER:-  
 Dinesh Kumar

DRG. NO. 02	JOB NO. DKS 102	DATE MAY 2022
(121)		



REINF. IN SLAB :-

a	10 mm	4	14"	c/c
b	8 mm	4	14"	c/c
c	10 mm	4	14"	c/c
d	8 mm	4	18"	c/c
e	10 mm	4	18"	c/c
f	10 mm	4	15"	c/c
g	10 mm	4	15"	c/c
h	8 mm	4	15"	(BOTH FACES) c/c
i	8 mm	4	15"	(BOTH FACES) c/c



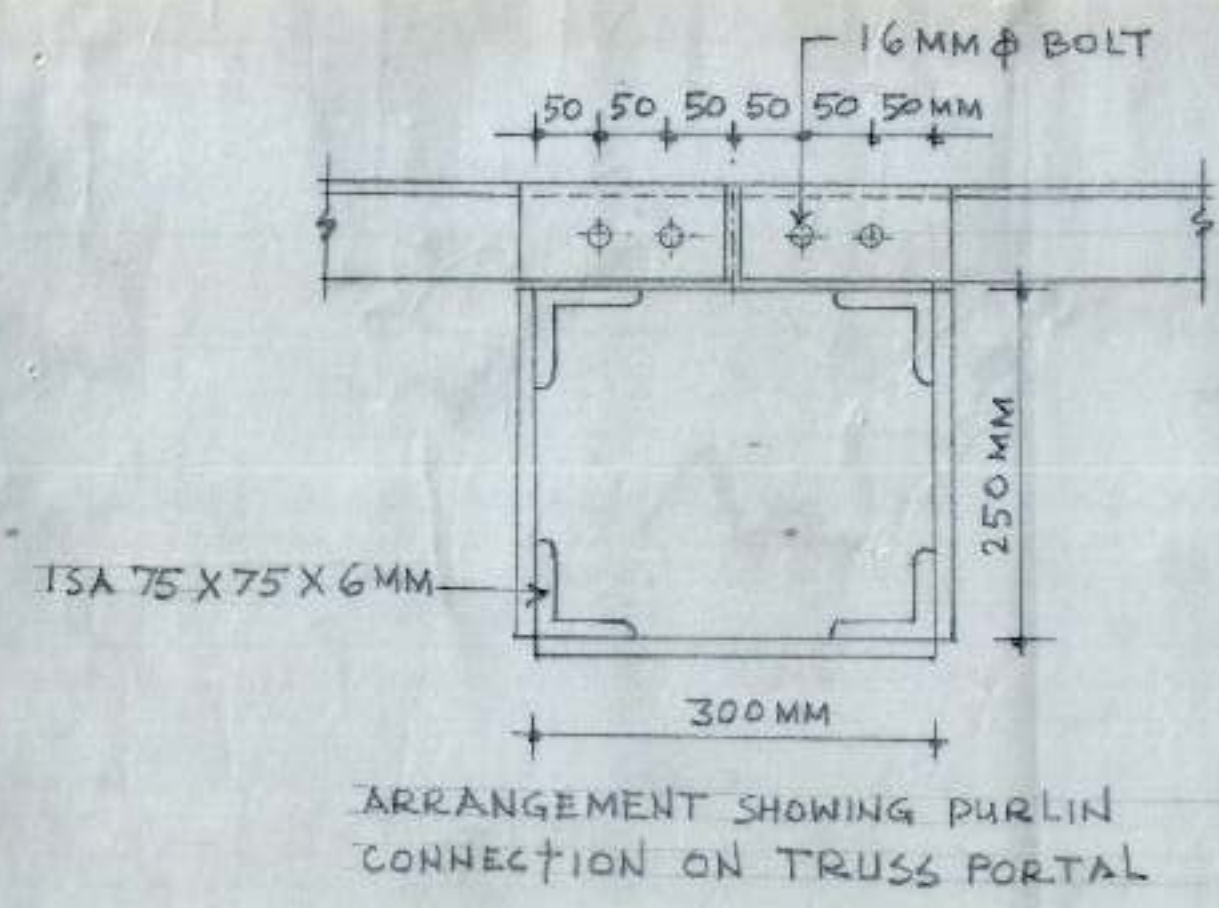
COVERED PLATFORM FOR  
SUEZI MANDI REHRI PHARI  
ASSOCIATION SECTOR-26  
CHANDIGARH.

M/S DINESH KUMAR SHARMA  
615, SECTOR :- 41A, CHANDIGARH

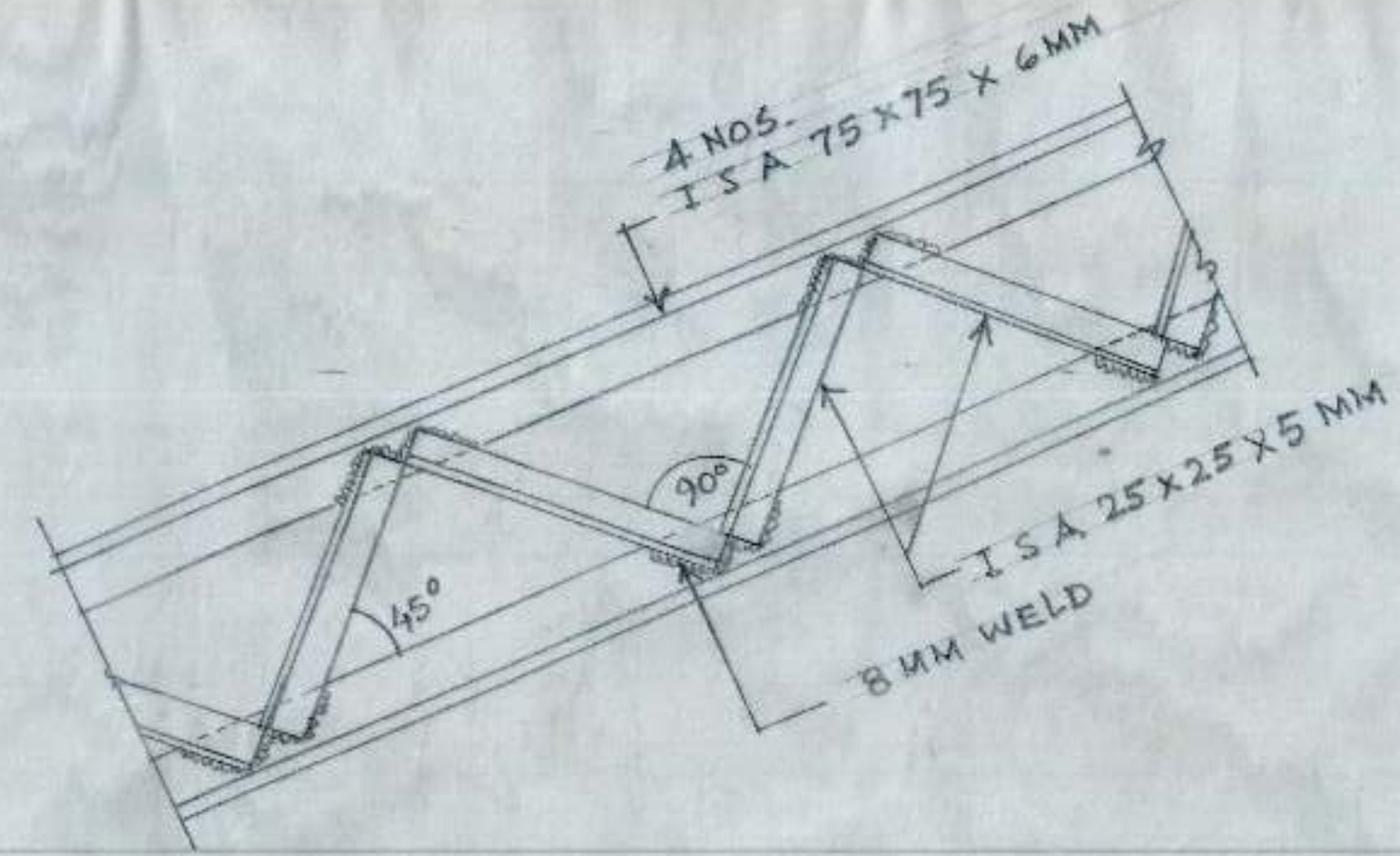
KEY PLAN  
R.C.C. SLAB

ENGINEER :-  
Dinesh Kumar

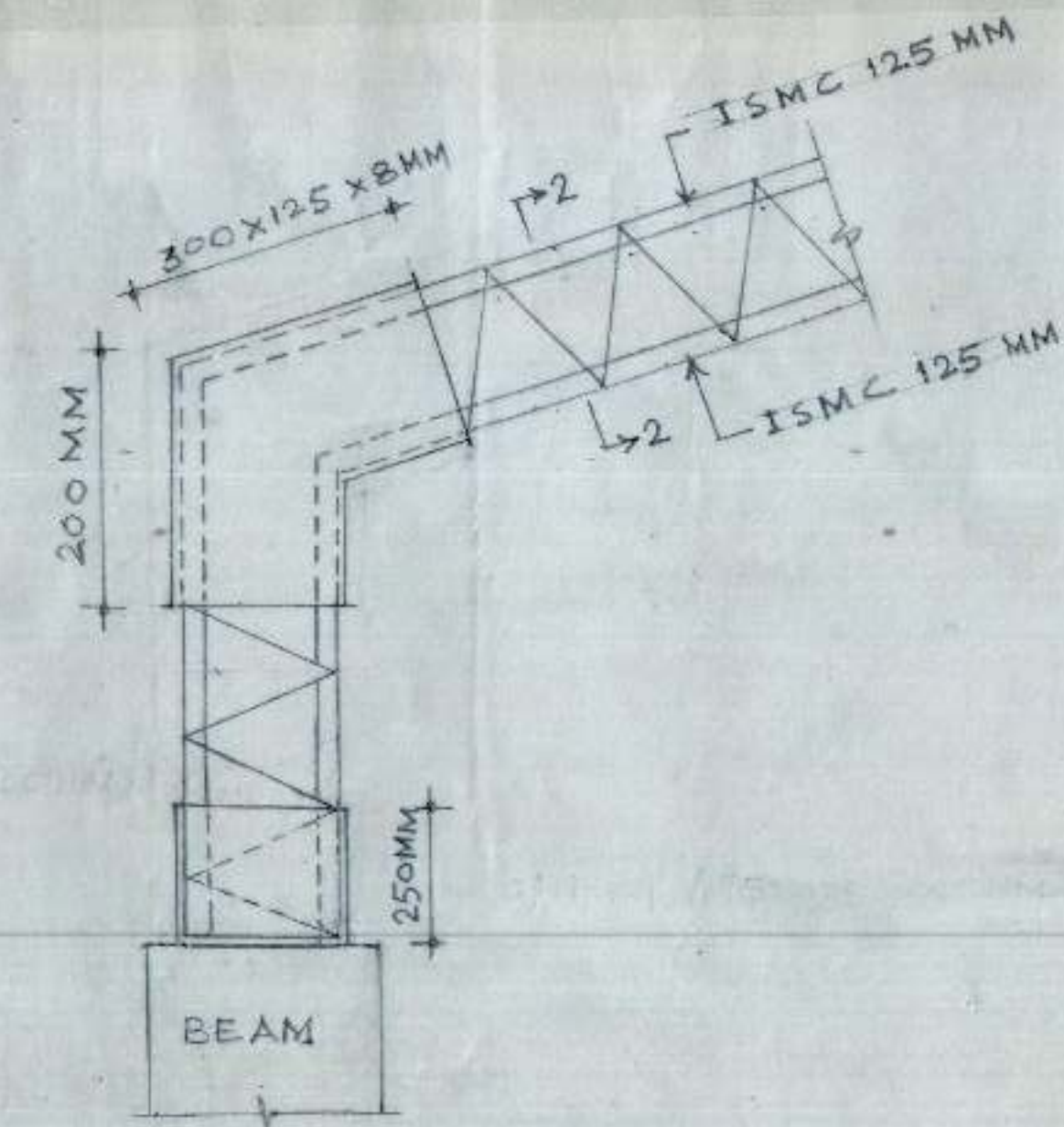
DRG. NO.	JOB NO.	DATE :-
03	DKS 102	MAY 2002



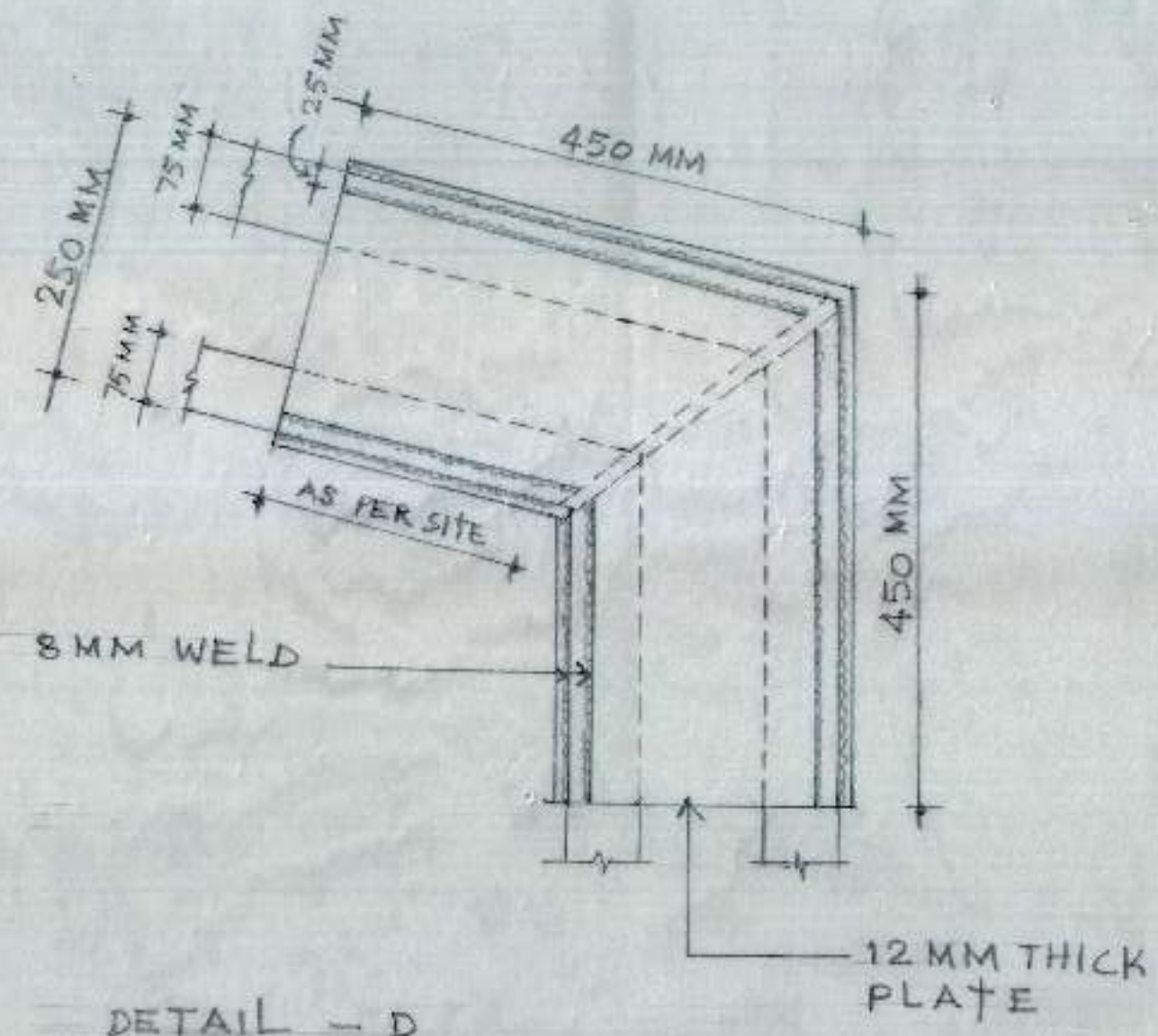
ARRANGEMENT SHOWING PURLIN CONNECTION ON TRUSS PORTAL



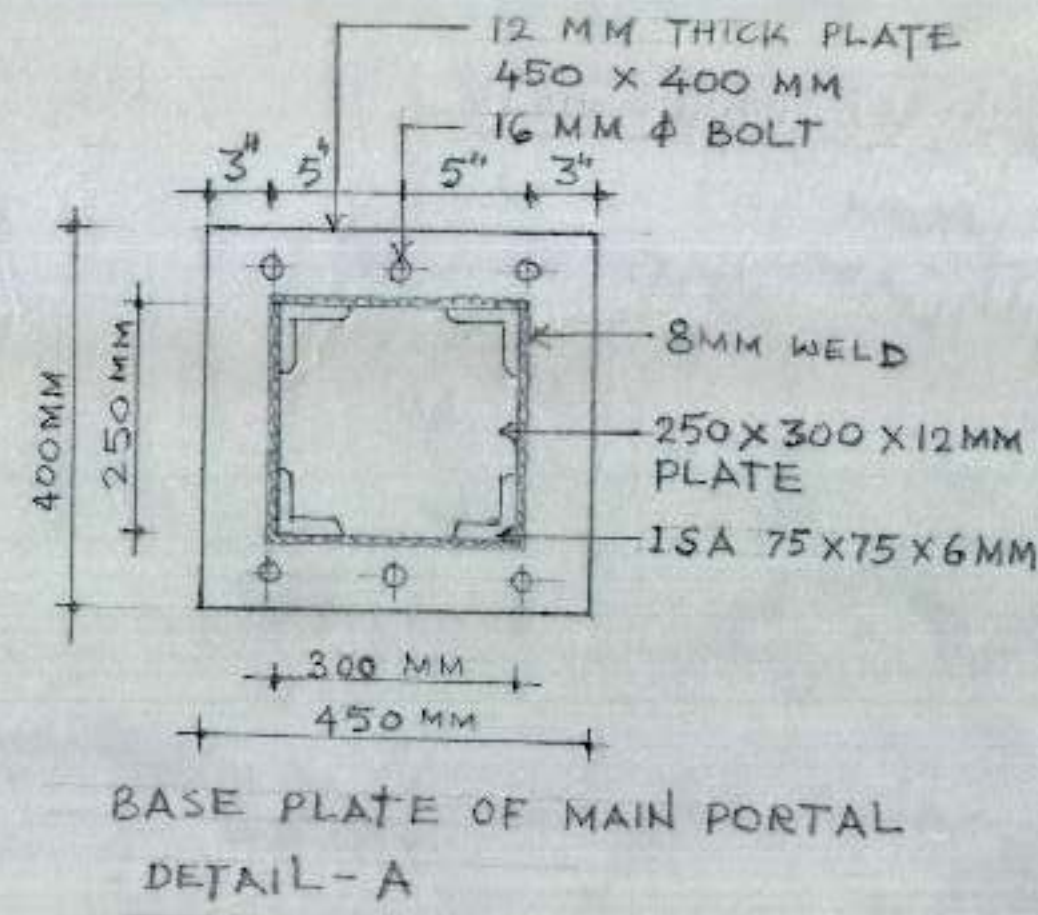
DETAIL OF BRACING



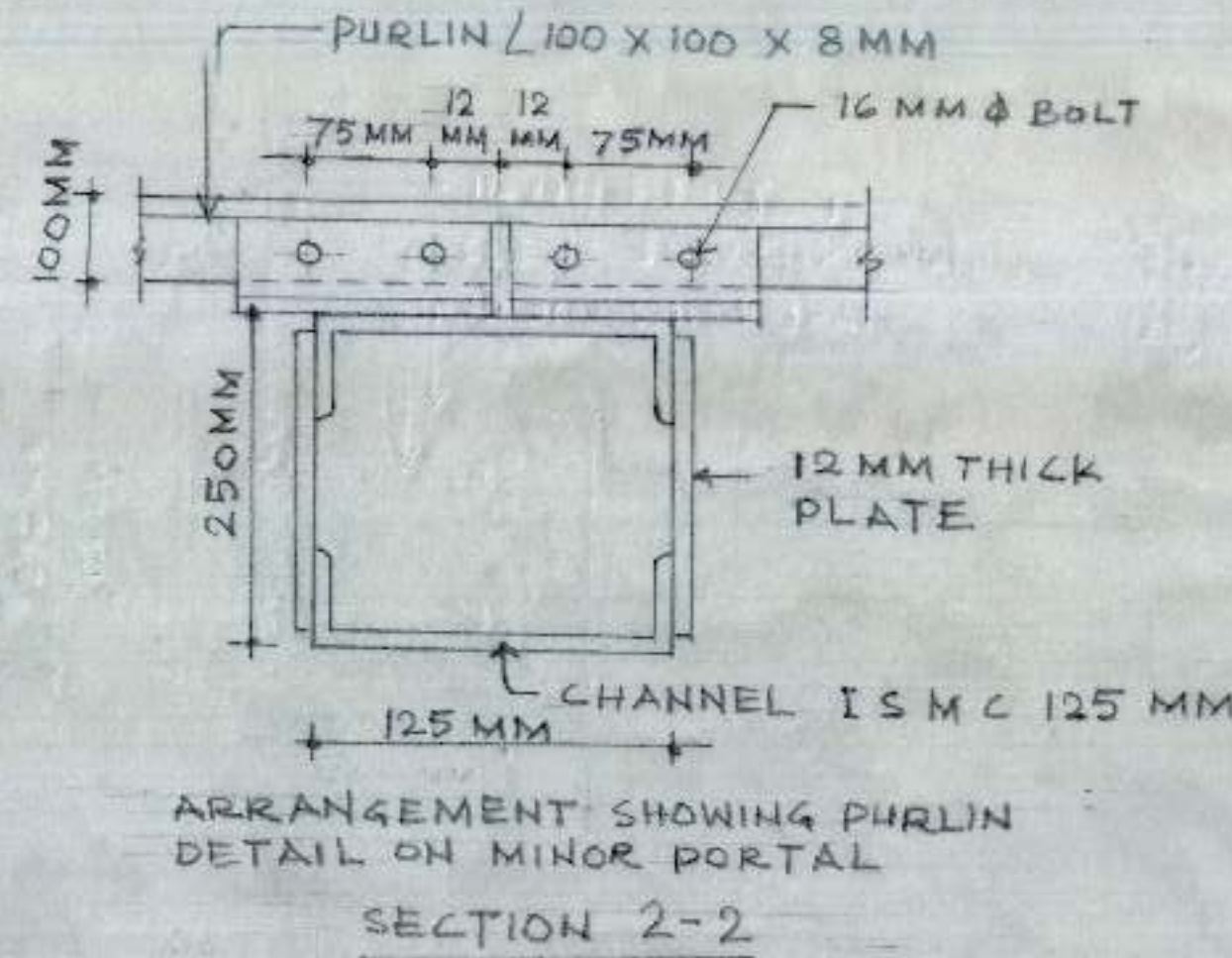
ELEVATION OF DETAIL 'B'



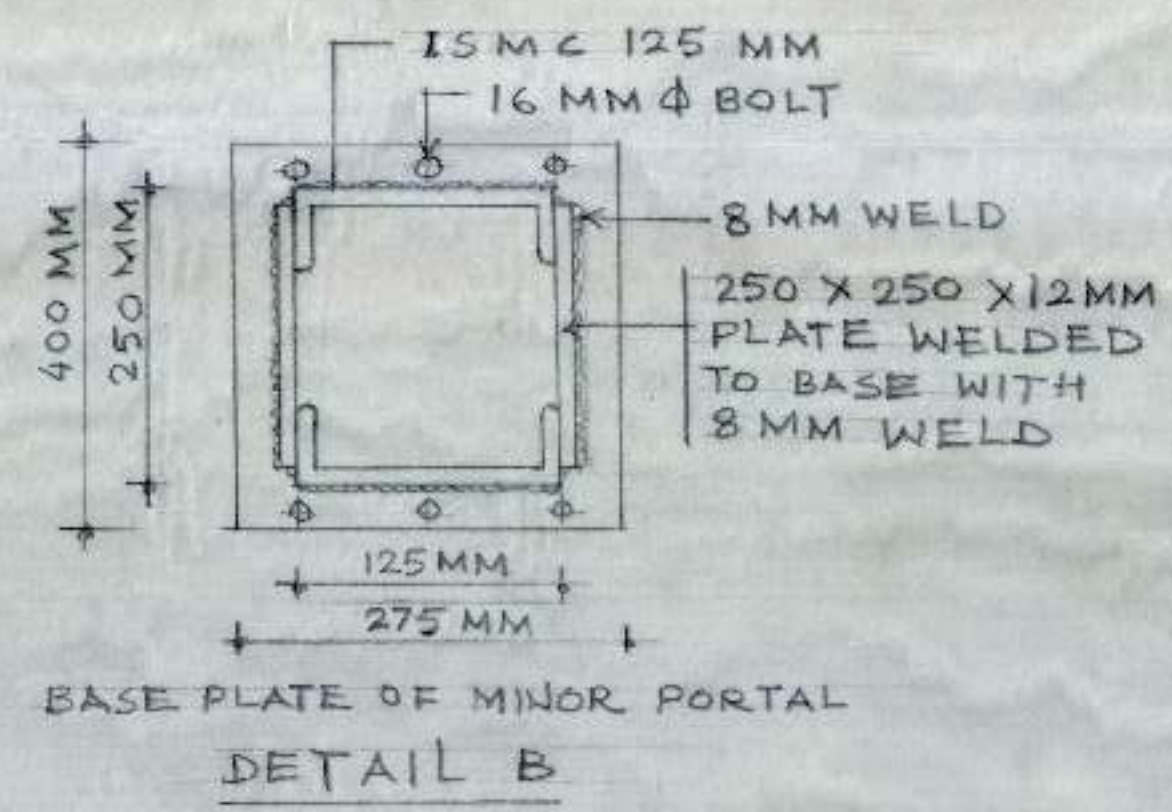
DETAIL - D  
SHOWING KNEE JOINT OF MAJOR PORTAL



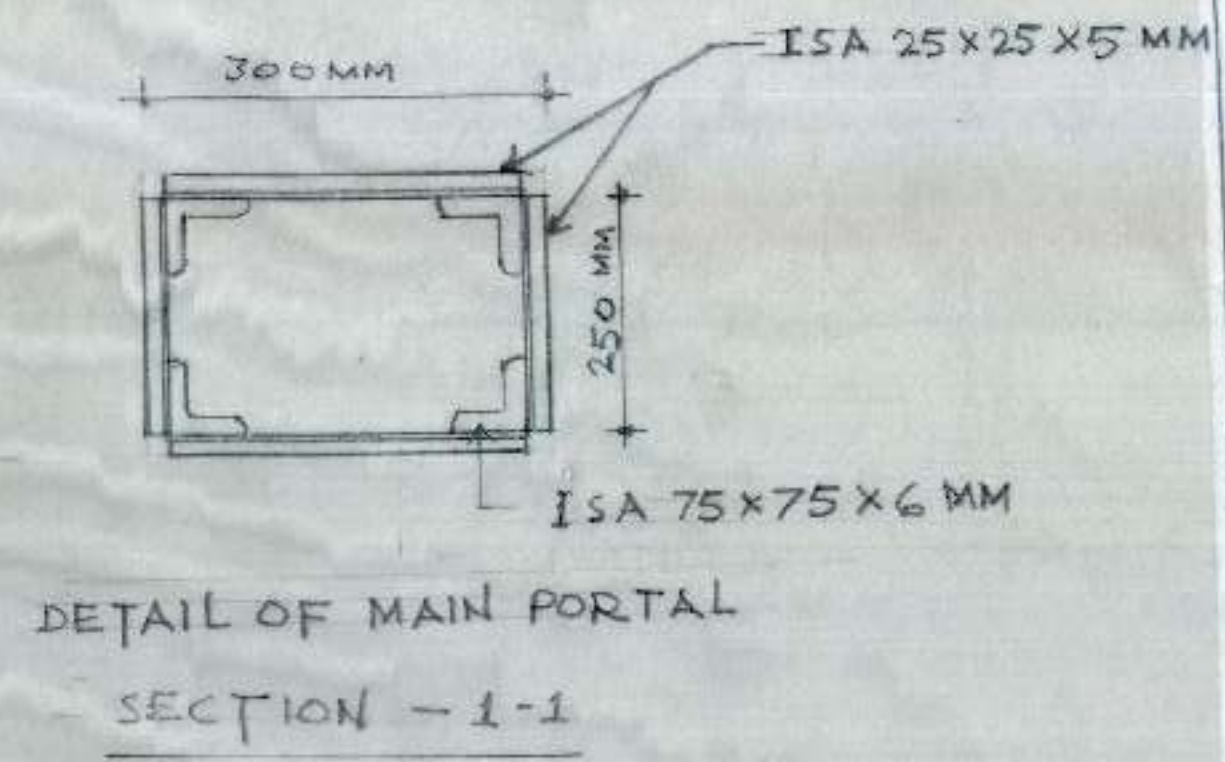
BASE PLATE OF MAIN PORTAL  
DETAIL - A



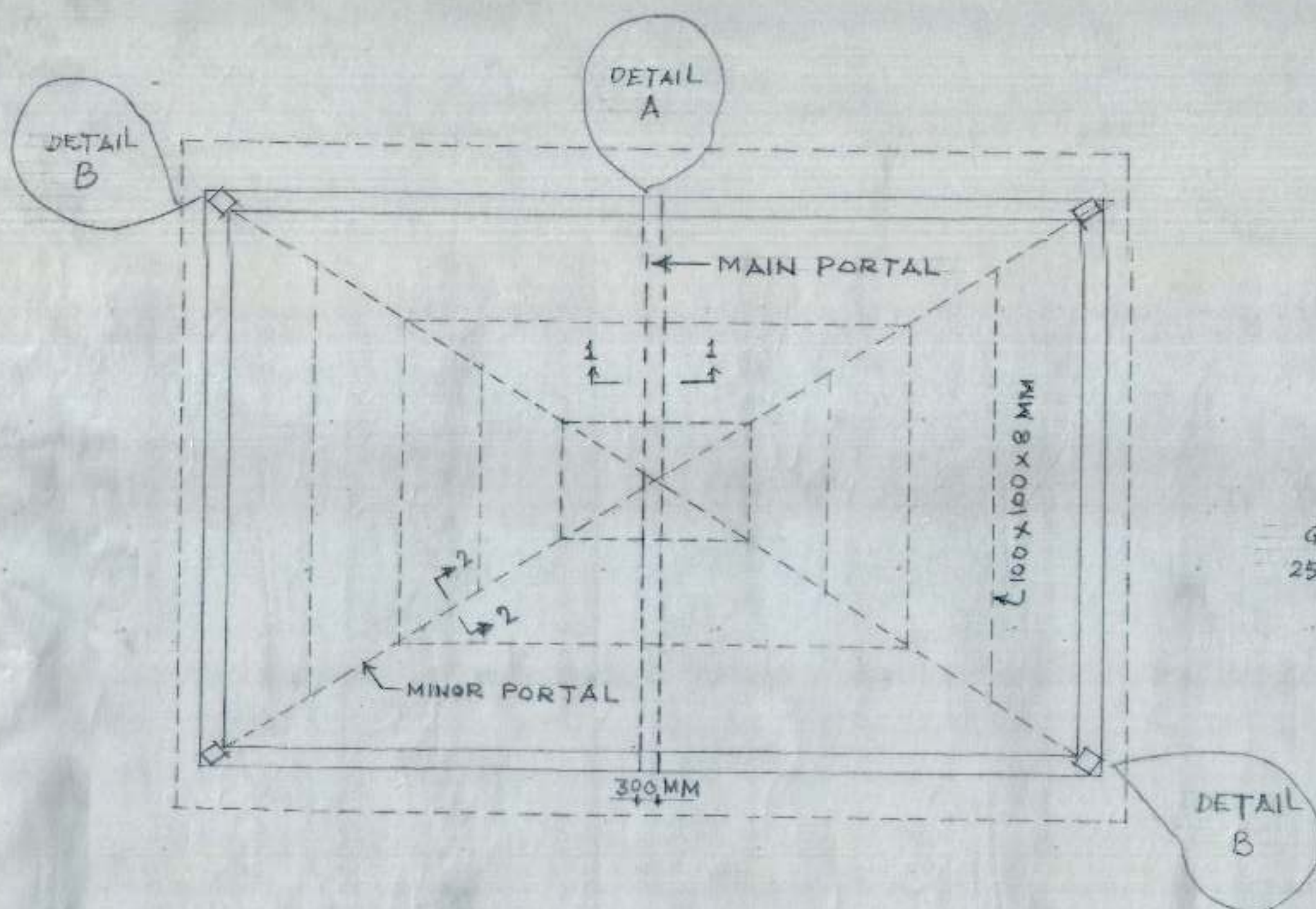
ARRANGEMENT SHOWING PURLIN  
DETAIL ON MINOR PORTAL  
SECTION 2-2



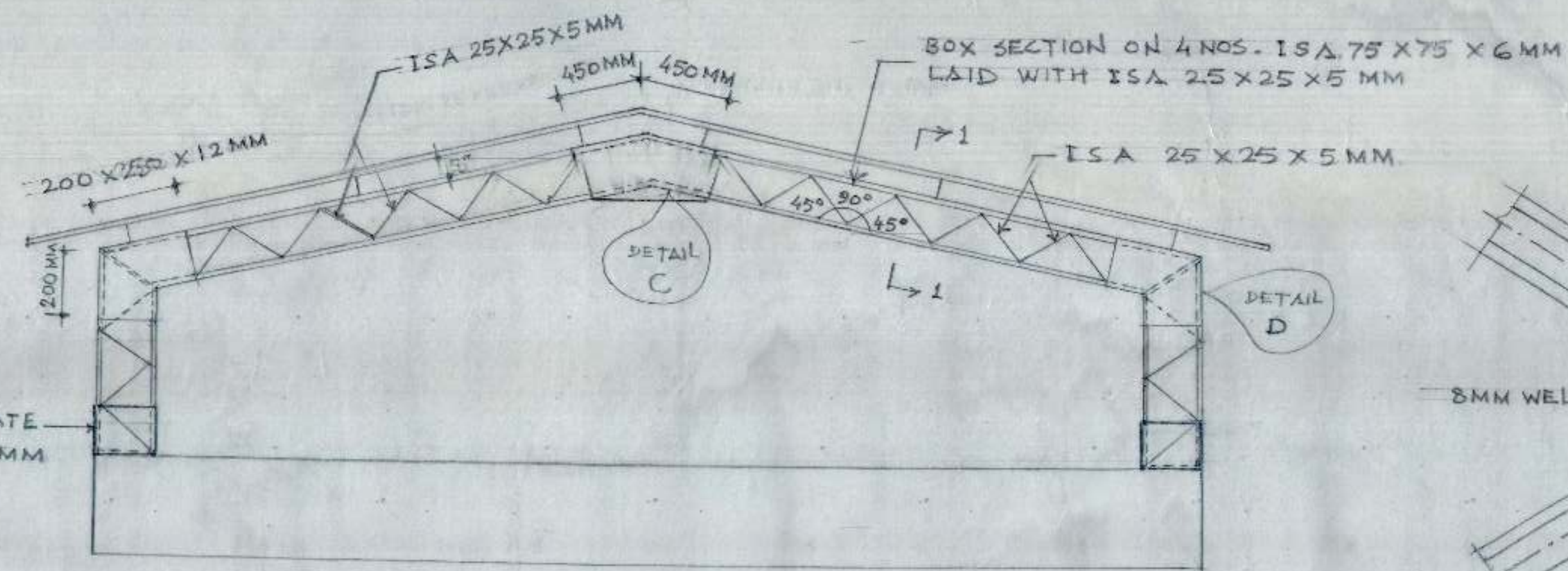
BASE PLATE OF MINOR PORTAL  
DETAIL B



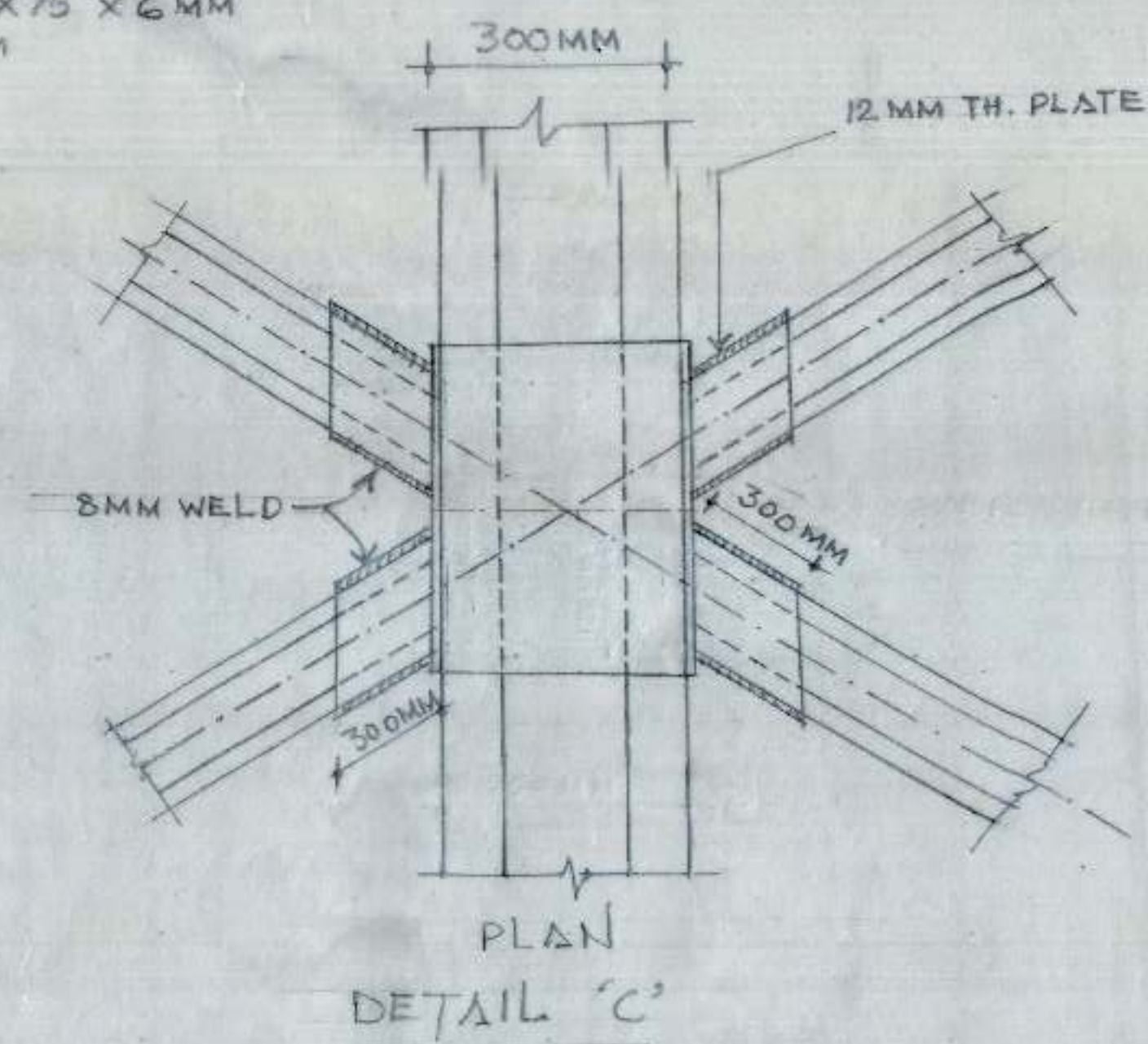
DETAIL OF MAIN PORTAL  
SECTION - 1-1



DETAIL B



ELEVATION OF MAIN PORTAL



PLAN  
DETAIL 'C'  
AT TOP SHOWING CONNECTION OF  
MAJOR AND MINOR PORTAL

COVERED PLATFORM FOR  
SUBZI MANDI REHRI PHARI  
ASSOCIATION SECTOR-26  
CHANDIGARH.

DETAIL OF TRUSS ROOF

M/S DINESH KUMAR SHARMA  
G15/1, SECTOR-41A, CHANDIGARH.

ENGINEER

Dinesh Kumar

DRG. No.	JOB No.	DATE
04	DKS 102	MAY 2002

CHIS-121