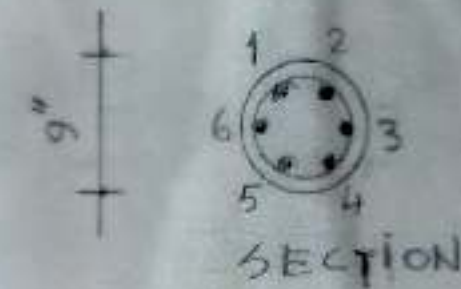
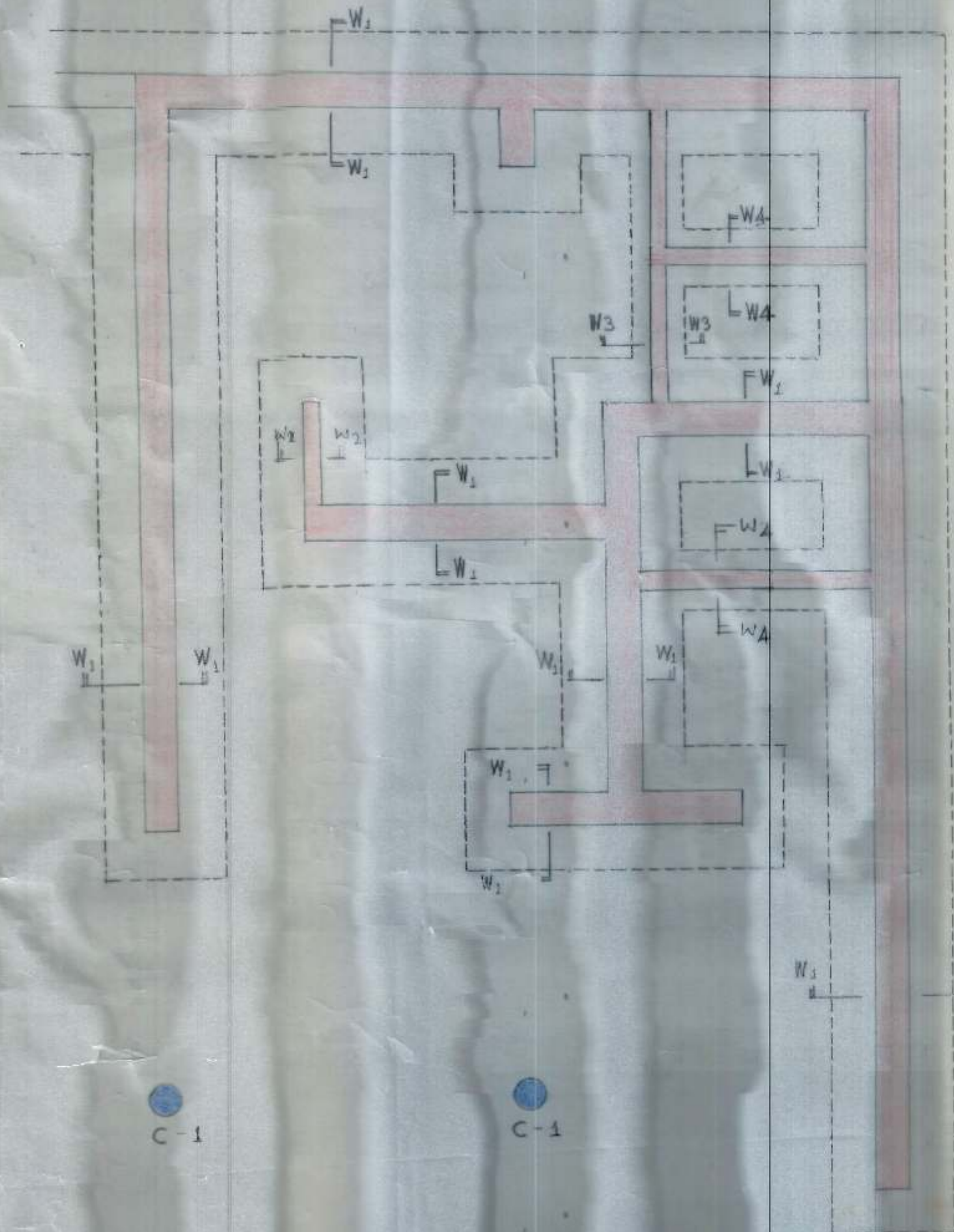
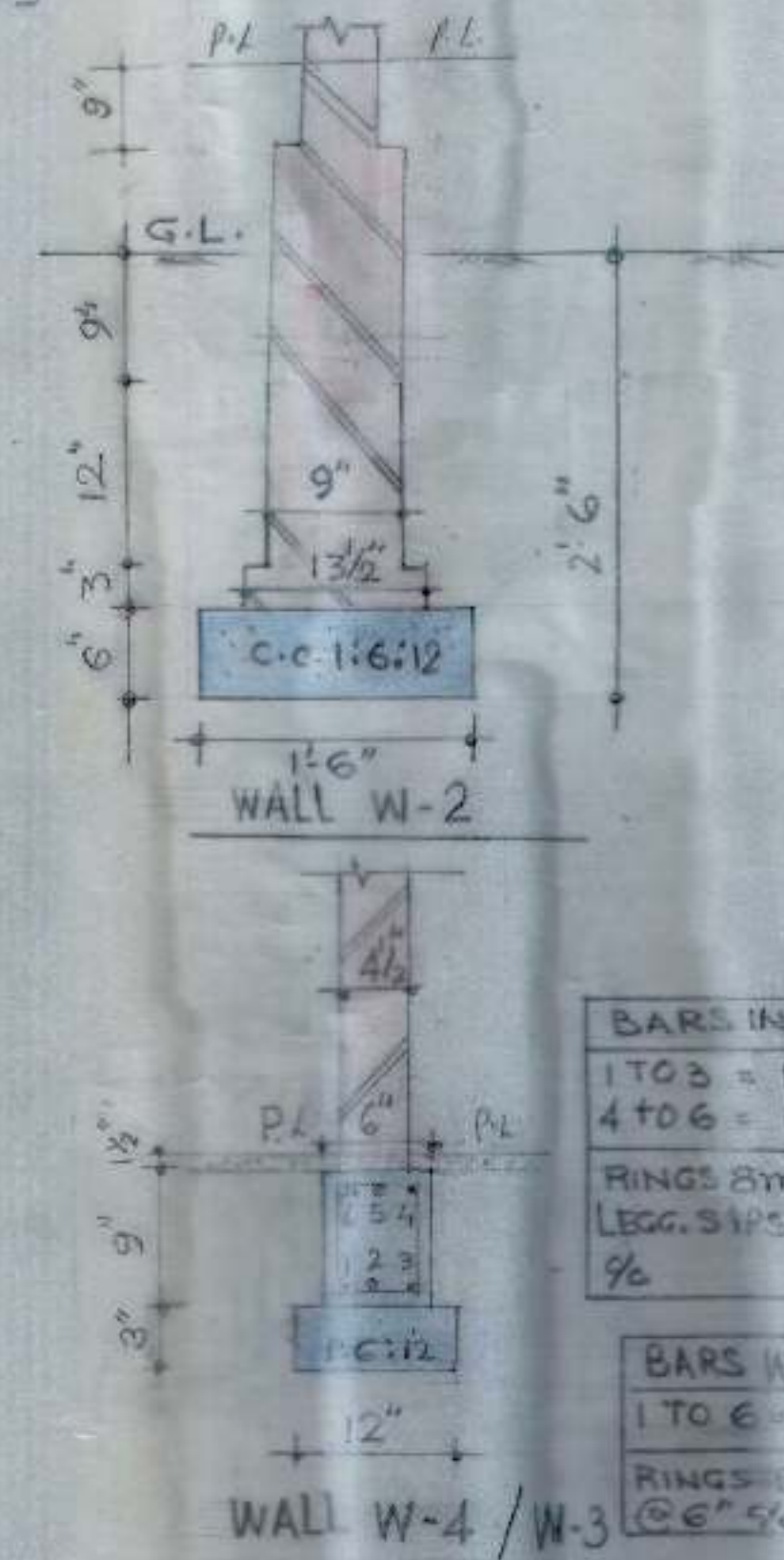
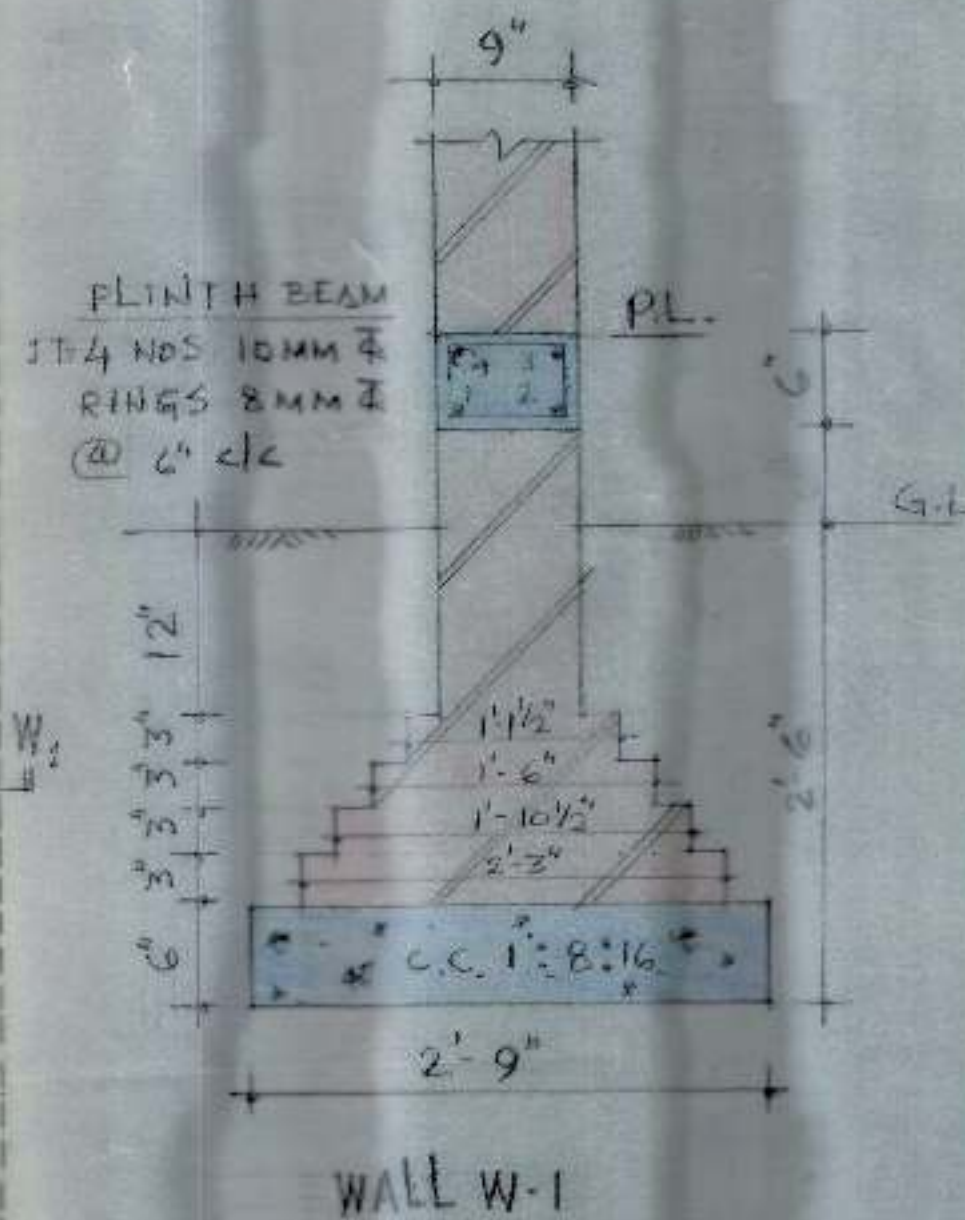
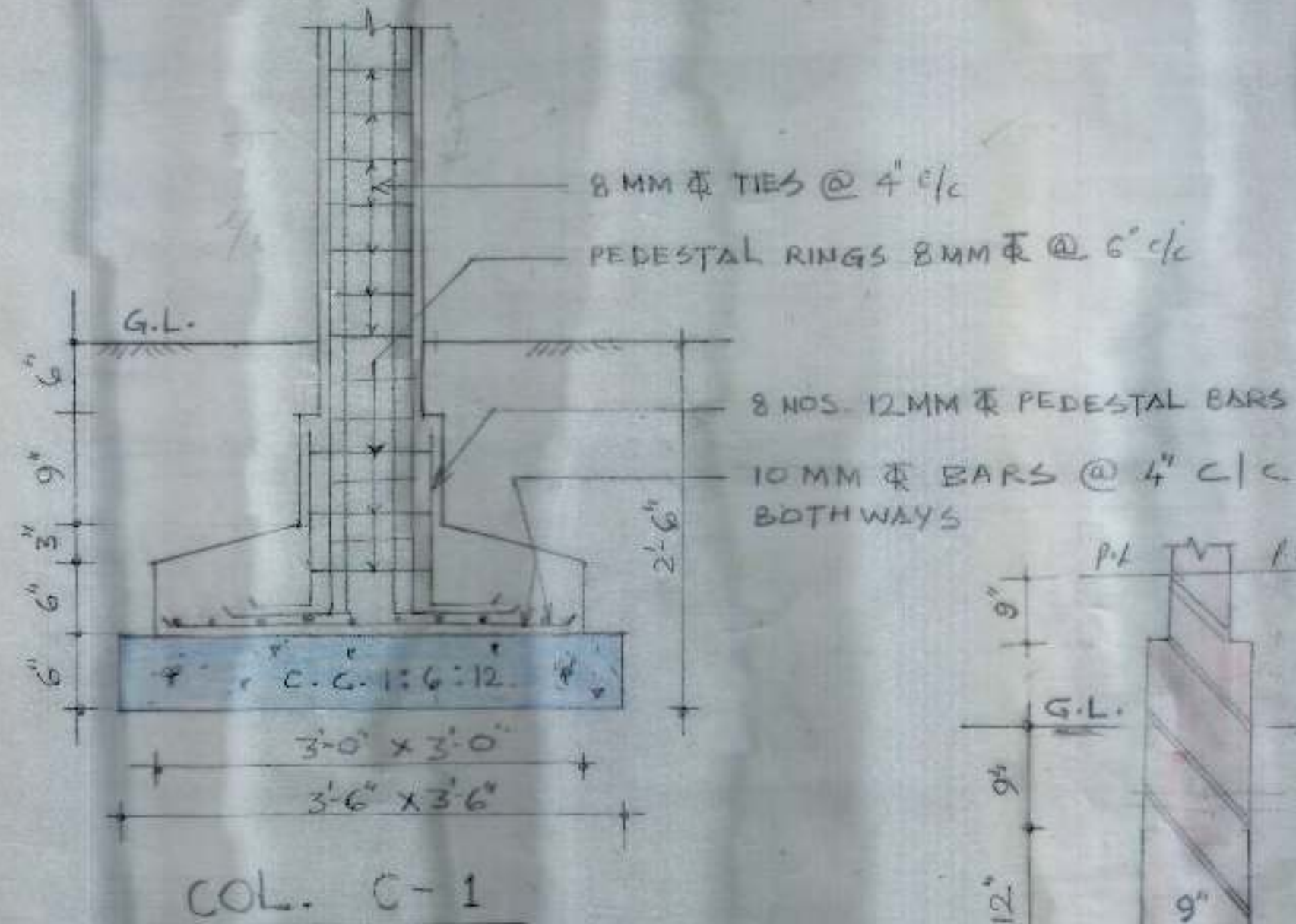


CHANDIGARH
HOUSING
BOARD.



BARS IN C-1	
1 TO 6	12mm Φ



BARS IN W-4	
1 TO 3	12mm Φ
4 TO 6	10mm Φ
RINGS 8mm Φ 2 LEGG. SIPS @ 6"	

BARS W-3	
1 TO 6	12mm Φ
RINGS 8mm Φ @ 6" c/c	

NOTES

- USE M.20 CONCRETE.
- USE TOR STEEL CONFORMING TO IS 1785-1986 FOR GRADE Fe 415
- USE 1:6 C.M. FOR 9" TH. WALL AND 1:4 C.M. FOR 4 1/2" TH. WALL.
- NET SAFE BEARING OF 10T/M² HAS BEEN TAKEN FOR DESIGN OF FOUNDATION WHICH SHOULD BE ENSURED AT SITE.
- FOR LAYING OF R.C.C. AND PLACING OF REINFORCEMENT ALL CODAL PROVISIONS LAID IN IS 456-2000 SHOULD BE STRICTLY FOLLOWED TO ENSURE QUALITY AS PER B.I.S. STANDARDS.
- DISCREPANCIES BETWEEN DETAILS SHOWN IN THIS DRG. & ARCH. DRG. IF ANY BE GOT CLARIFIED FROM THIS OFFICE BEFORE EXECUTION.
- DIMENSIONS ARE TO BE READ AND NOT SCALED OUT.
- ALL FOOTINGS SHOULD REST ON FIRM AND CONSOLIDATED SOIL.

S.E-I

E.E-III

Approved
26/11/84
A.E.D

STANDARD DESIGN OF TOILET FOR MOTOR MARKET IN VARIOUS SECTORS CHANDIGARH.

DRG. NO.
01.

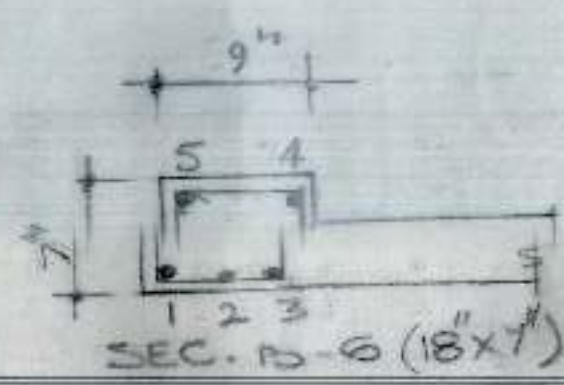
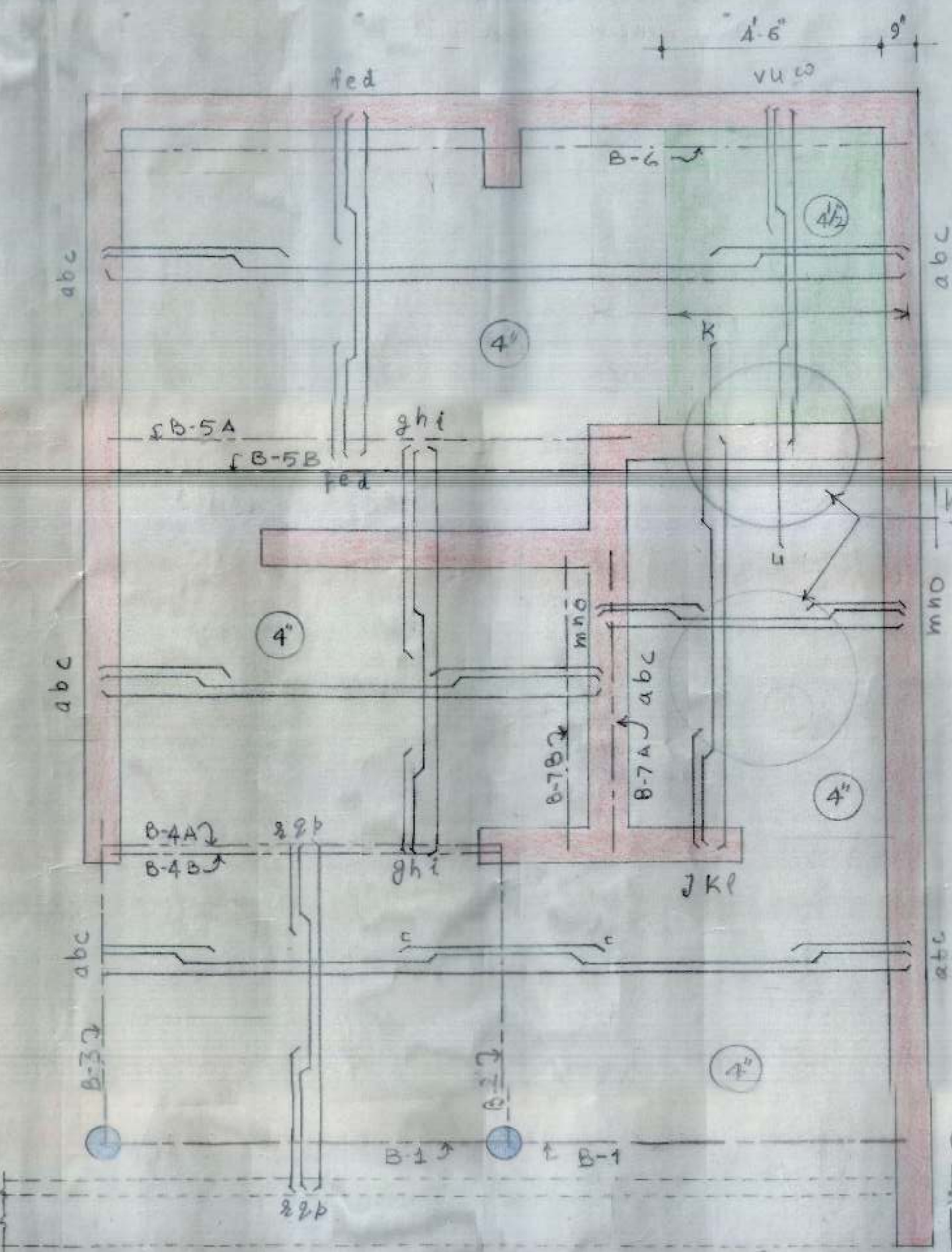
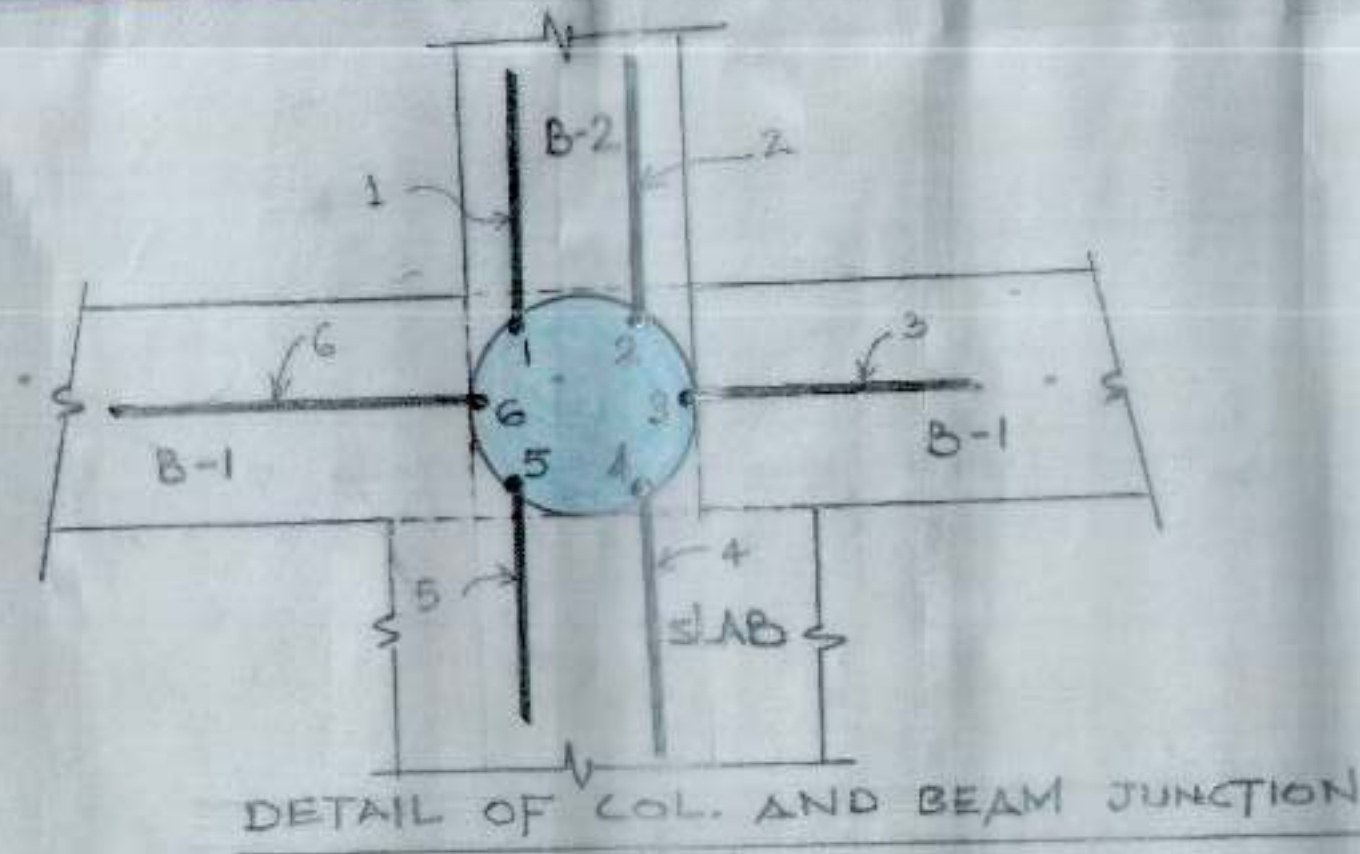
JOB NO.
115

CHANDIGARH
HOUSING
BOARD

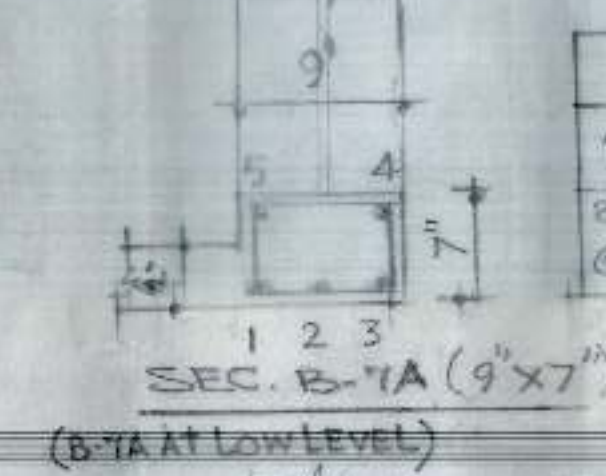
NOTES

NOTES REFER TO DRG NO. OF
JOB NO. 115

BARS IN SLAB			
a, b, c	8 mm	φ @	18" c/c
d, e, f	8 mm	φ @	14" c/c
g, h, v, w	10 mm	φ @	10" c/c
j, k, l	8 mm	φ @	14" c/c
m, n, o	10 mm	φ @	14" c/c
p, q, r	8 mm	φ @	14" c/c
s	8 mm	φ @	14" c/c
q', r'	8 mm	φ @	14" c/c

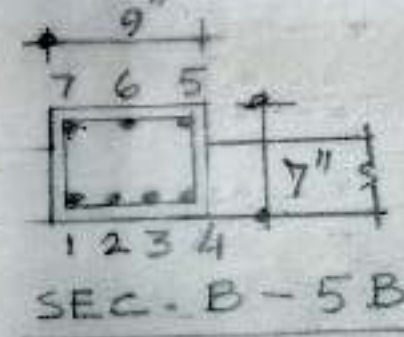


BARS IN B-6	
1 TO 3	= 16 MM φ
4, 5	= 12 MM φ
8 MM φ 2 LEGG. STPS @ 3" c/c THR. OUT.	

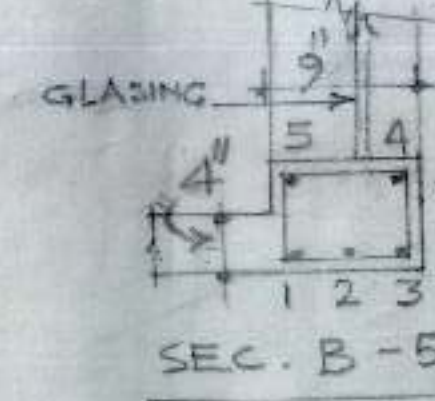


BARS IN B-7A	
1 TO 5	= 10 MM φ
8 MM φ 2 LEGG. STPS @ 12" c/c THR. OUT.	

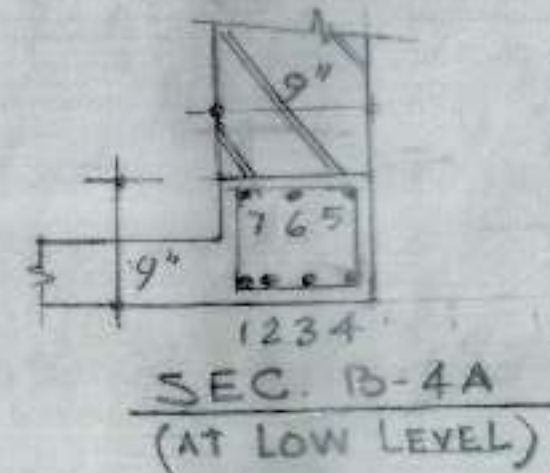
WATER TANK



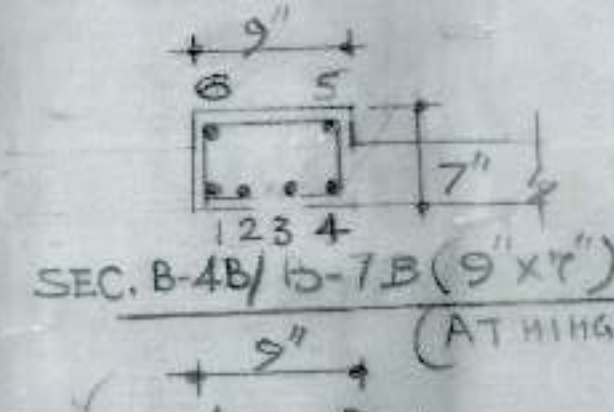
BARS IN B-5B	
1 TO 4	= 16 MM φ
5 TO 7	= 12 MM φ
8 MM φ 2 LEGG. STPS @ 3" c/c THR. OUT.	



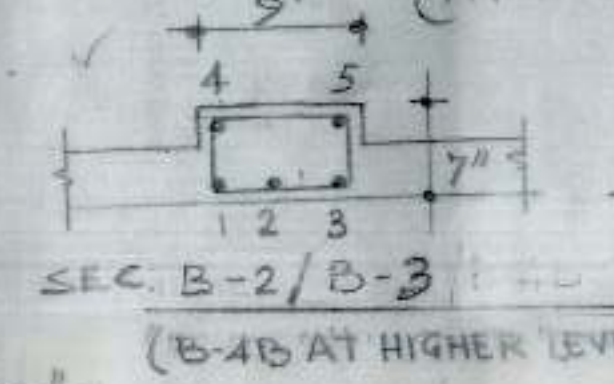
BARS IN B-5A	
1 TO 5	= 12 MM φ
8 MM φ 2 LEGG. STPS @ 3" c/c THR. OUT.	



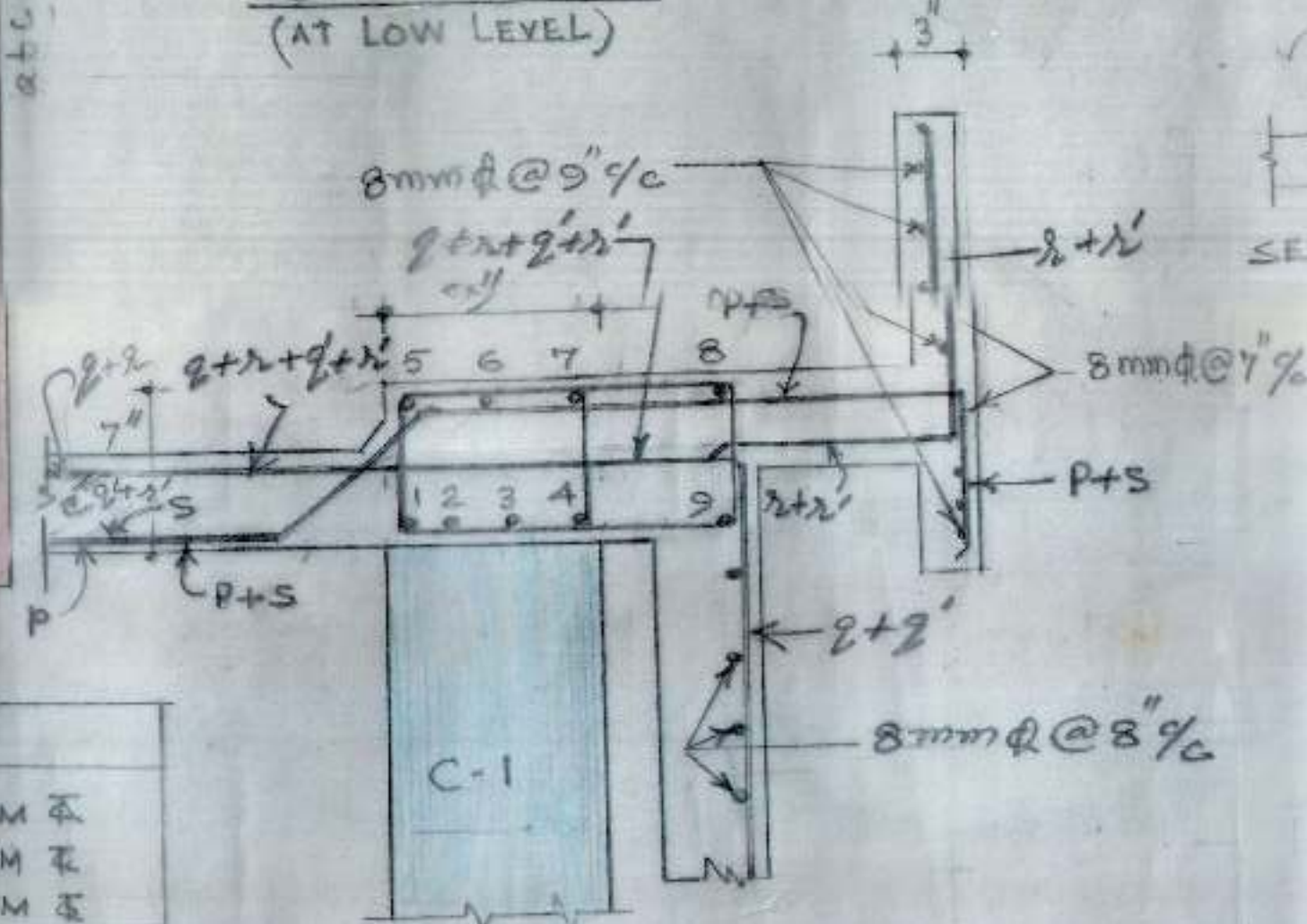
BARS IN B-4A	
1 TO 4	= 16 MM φ
5 TO 7	= 12 MM φ
8 MM φ 2 LEGG. STPS. 8 NOS. @ 3" RES @ 6" c/c	



BARS IN B-7B	
1 TO 5	= 12 MM φ
8 MM φ 2 LEGG. STPS @ 3" c/c THR. OUT.	



BARS IN B-2/B-3/B-4B	
1 TO 5	= 12 MM φ
8 MM φ 2 LEGG. STPS @ 3" c/c THR. OUT.	



BAR IN B-1	
1 TO 4	= 16 MM φ
5 TO 7	= 12 MM φ
8 TO 9	= 10 MM φ
8 MM φ 2 LEGG. STPS @ 4" c/c THR. OUT.	

S.E-I

EE-III

A.E.D

STANDARD DESIGN OF
TOILET FOR MOTOR MARKET
IN VARIOUS SECTORS
CHANDIGARH

DRG. NO.
02

JOB NO.
115