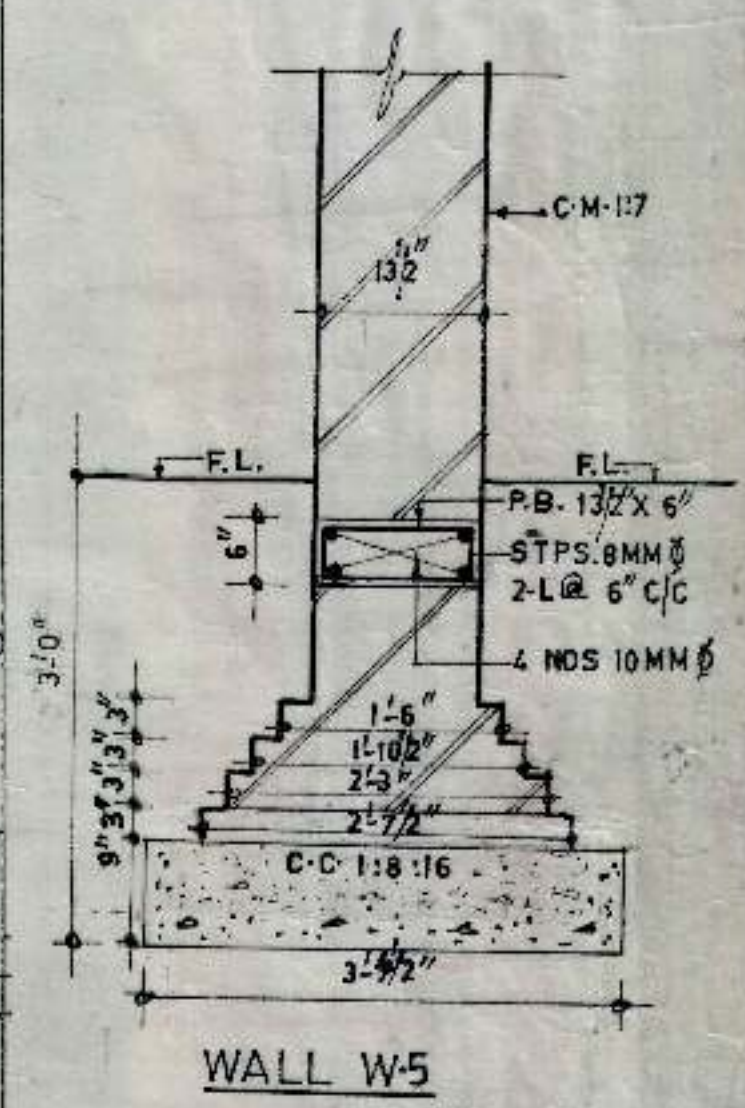


BOOTHS FOR REHRI WORKERS, SECTOR 46-B CHANDIGARH.

- NOTE :-
1. USE M-15 CONCRETE
 2. USE TOR-STEEL CONFORMING TO IS 1785-1986 OF GRADE Fe-415
 3. THE NET SAFE BEARING CAPACITY AT FOUNDING LEVEL HAS BEEN ASSUMED AS 1.0 TON / SQ FT.



ARCHITECT :-

JOB NO - 109

TITLE :-

DETAIL OF FOUNDATION

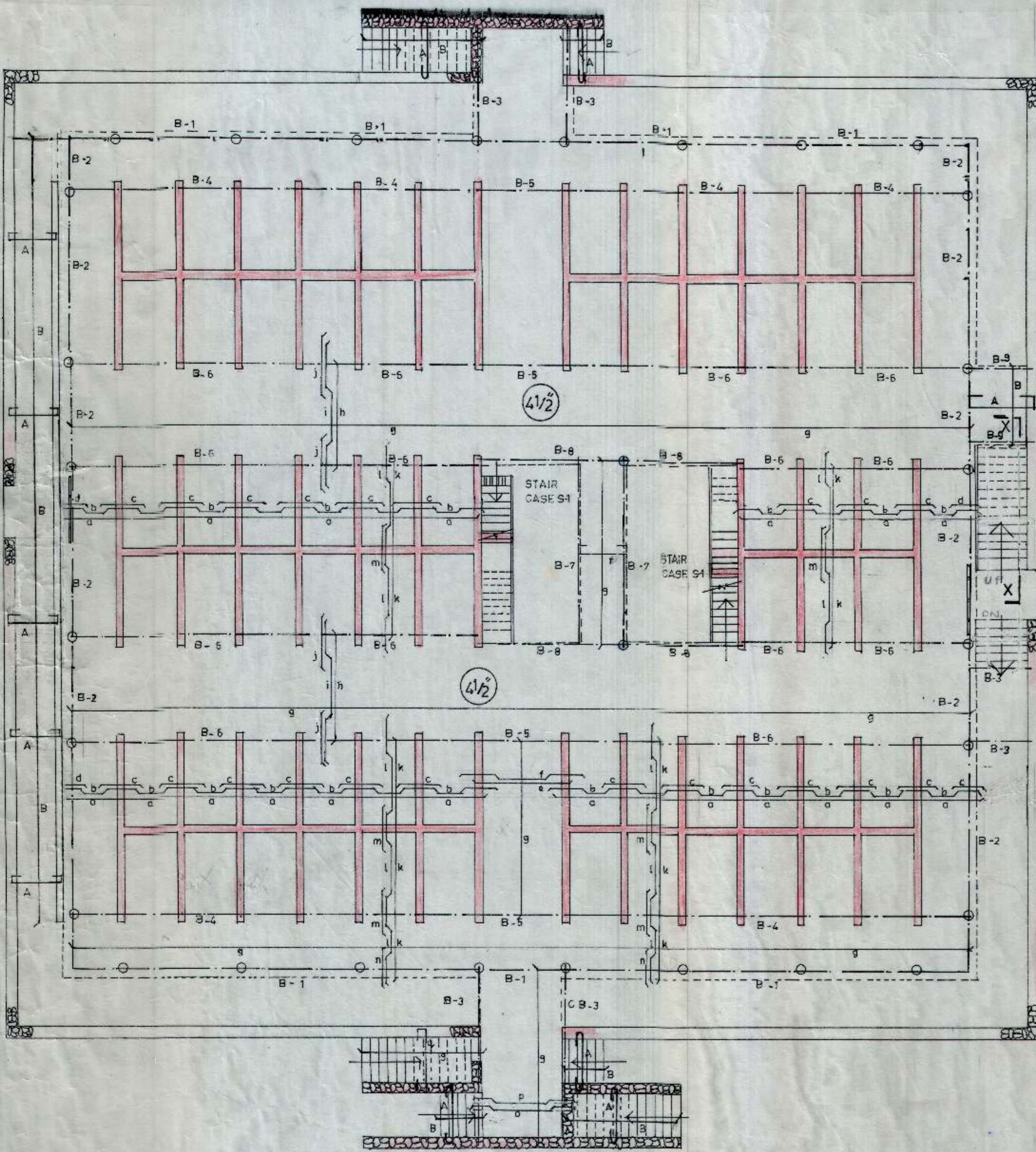
DEALT BY :-	CHECKED BY :-
J.P.K.	
SCALE :- 1/8" = 1'-0"	DATED :-
	MAY, 2008
JOB NO. :-	DRG. NO. :-
BRW	01

UNCTION DESIGNS

S.C.O. 1136-37 (1ST. FLOOR)

SECTOR 22-B

CHANDIGARH.

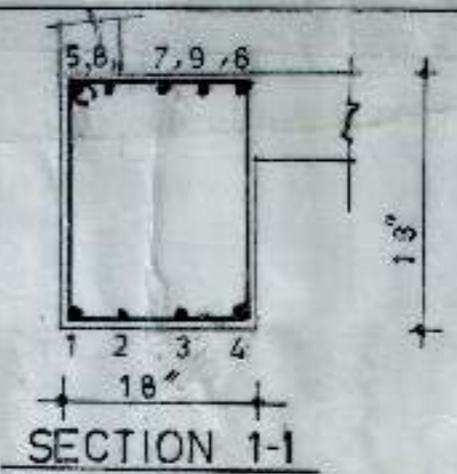


KEY PLAN (GROUND FLOOR)

NOTE SLAB 4" TH. THROUGHOUT UNLESS OTHERWISE SPECIFIED

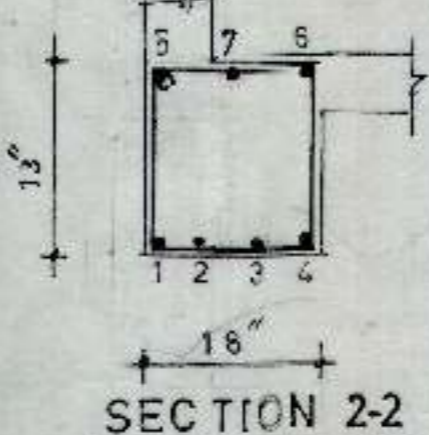
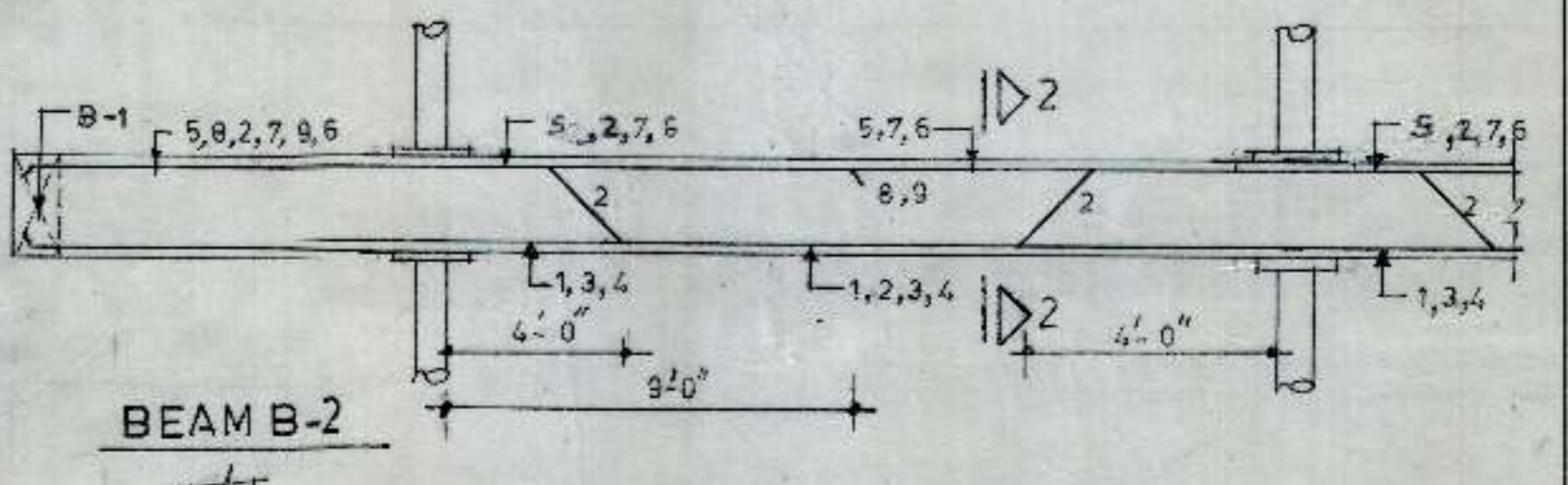
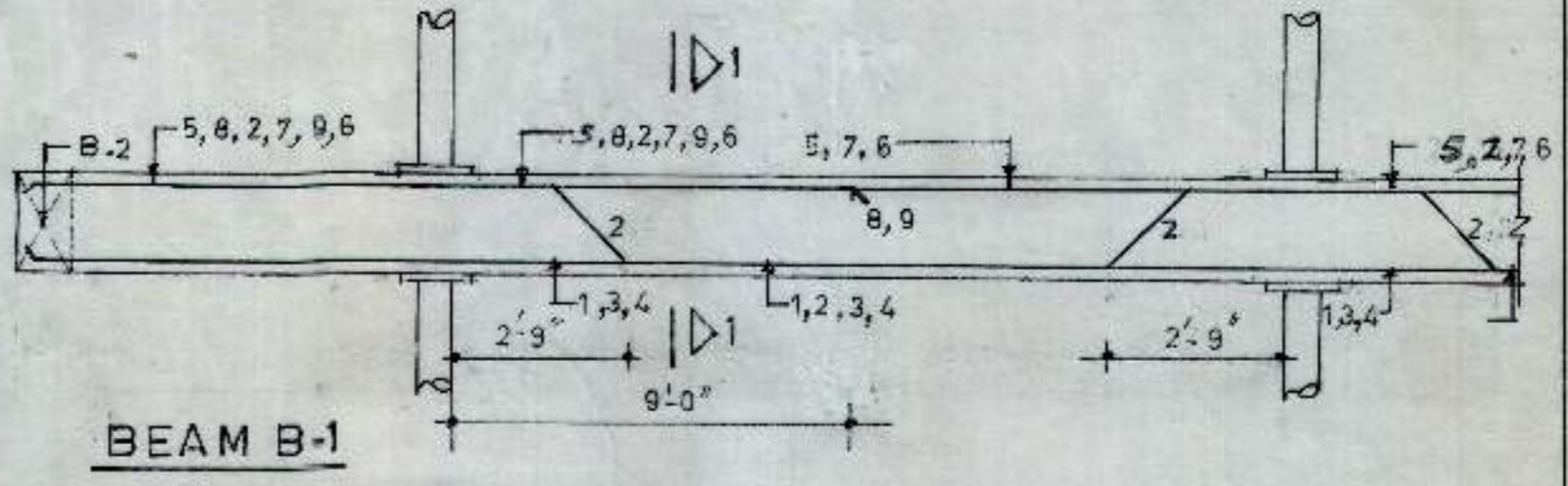
BARS IN SLAB

a, b, c, d = 8MM @ 16" c/c
 e, f = 10MM @ 14" c/c
 h, i, j = 10MM @ 10" c/c
 k, l, m, n = 8MM @ 16" c/c
 B, g = 8MM @ 9" c/c
 o, p = 10MM @ 9" c/c
 A, q = 8MM @ 7" c/c
 r = 8MM @ 7" c/c



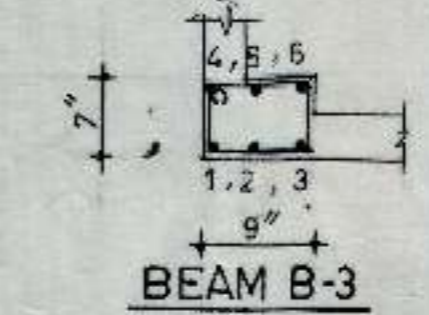
BARS IN BEAM B-1

1 TO 9 = 12 MM @
 CRANK 2" AT 2'-9" FROM SUPPORTS.
 STPS 8MM @ 2 LEGGED 6 NOS @ 6" c/c
 + REST @ 3" c/c FROM SUPPORTS.



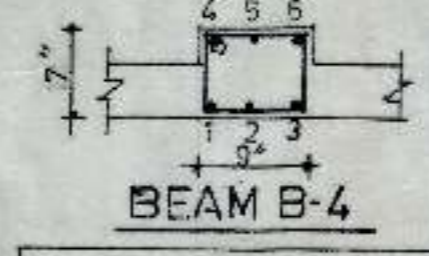
BARS IN BEAM B-2

2, 3 = 16 MM @
 1, 4 TO 9 = 12 MM @
 CRANK 2" AT 4'-0" FROM SUPPORTS
 STPS 8MM @ 2 LEGGED 6 NOS @ 6" c/c
 + REST @ 3" c/c FROM SUPPORTS.



BARS IN BEAM B-3

1, 3 = 16 MM @
 2, 4, 6 = 12 MM @
 5 = 16 MM @
 STPS 8MM @ 2 LEGGED @ 4" c/c

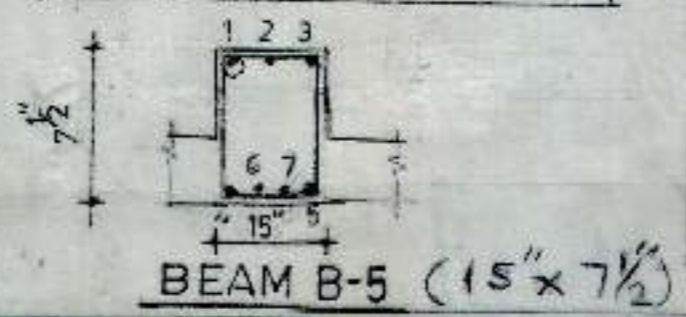


BARS IN BEAM B-4

1, 3, 4, 5 = 12 MM @
 2, 5 = 12 MM @
 STPS 8MM @ 2 LEGGED @ 4" c/c

BARS IN BEAM B-5

1 TO 7 = 20MM @
 STPS 8MM @ 2 LEGGED @ 4" c/c



BOC
 OTHS FOR REHRI
 WORKER, SECTOR 46-B
 CHANDIGARH.

NOTES:-
 1. FOR STR. NOTES REFER TO STR. DRG. NO.
 -01. JOB. NO. BRW.

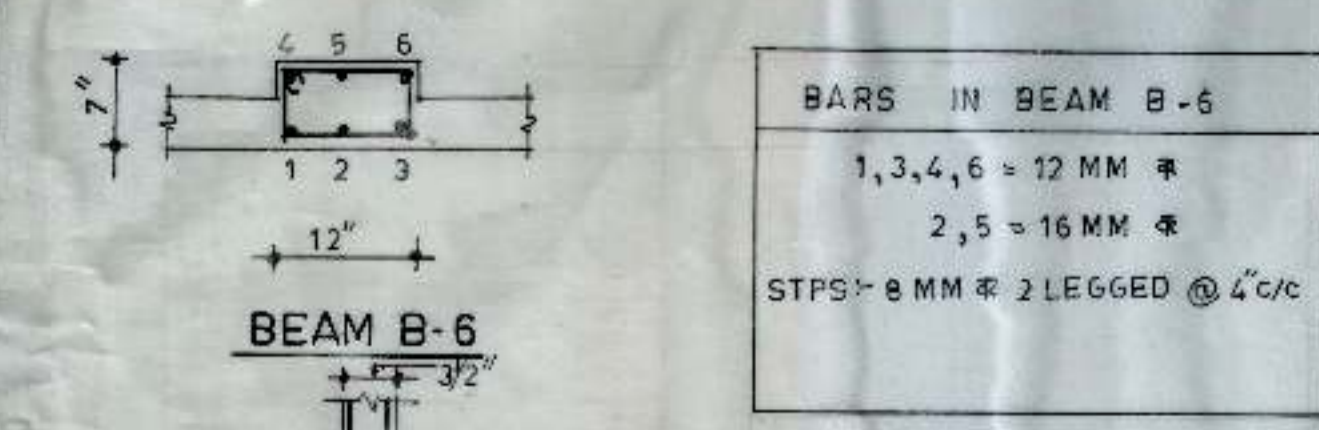
ARCHITECT:-
 JOB NO-109

TITLE:-
 DETAIL OF SLAB & BEAMS AT
 F.F. LEVEL.

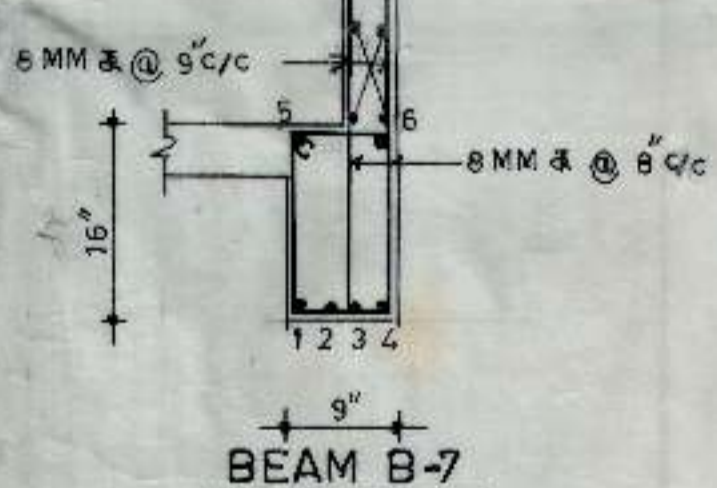
DEALT BY:- J.P.K.	CHECKED BY:-
SCALE 1/4" = 1'-0"	DATED:- JUNE, 2000
JOB NO. BRW	DRG NO. 02

UNCTION DESIGNS

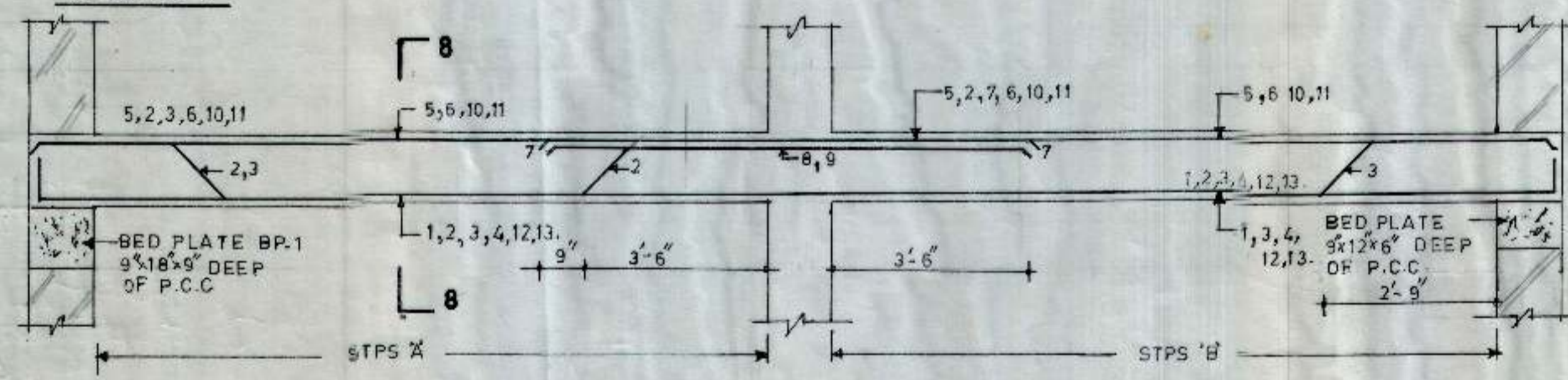
S CO. 1136-37 (IST. FL. OOR)
 SE TOR 22-B
 CHANDIGARH.



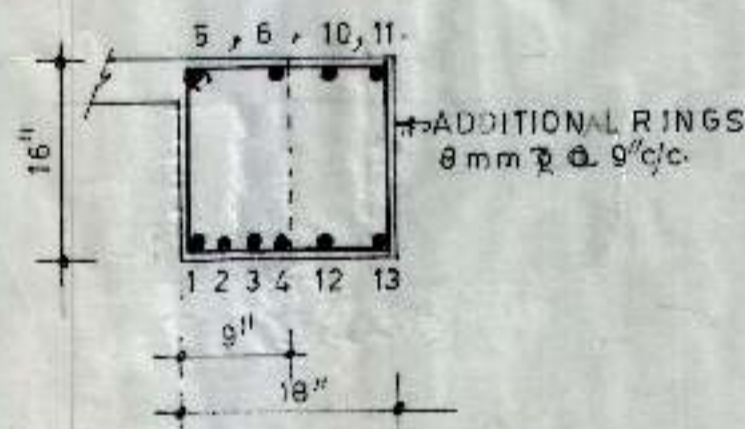
BARS IN BEAM B-6	
1, 3, 4, 6	= 12 MM Φ
2, 5	= 16 MM Φ
STPS	= 8 MM Φ 2 LEGGED @ 4" c/c



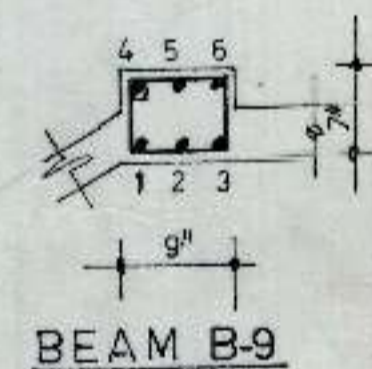
BARS IN BEAM B-7	
1 TO 6	= 16 MM Φ
5, 6	= 12 MM Φ
CRANK 2, 3 AT 4" FROM SUPPORT	
STPS	= 8 MM Φ 2 LEGGED @ 6" c/c
REST	@ 9" c/c + 4 @ 6" c/c



BARS IN BEAM B-8	
1, 3, 4, 5, 6	= 16 MM Φ
2, 7	= 20 MM Φ
8 TO 13	= 12 MM Φ
STPS A	= 8 MM Φ 2 L-9 @ 6" c/c + 6 @ 6" c/c
REST	@ 9" c/c + 6 @ 6" c/c + 12 @ 4" c/c
STPS B	= 8 MM Φ 2 L-4 @ 6" c/c
REST	@ 9" c/c + 4 @ 6" c/c

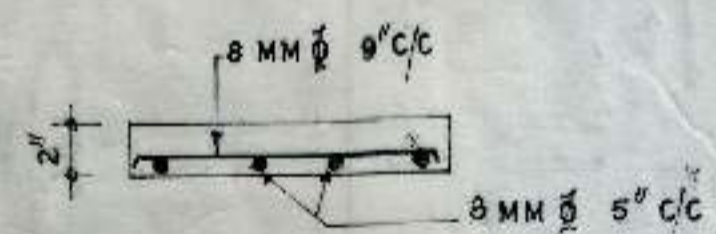


SECTION AT 8-8

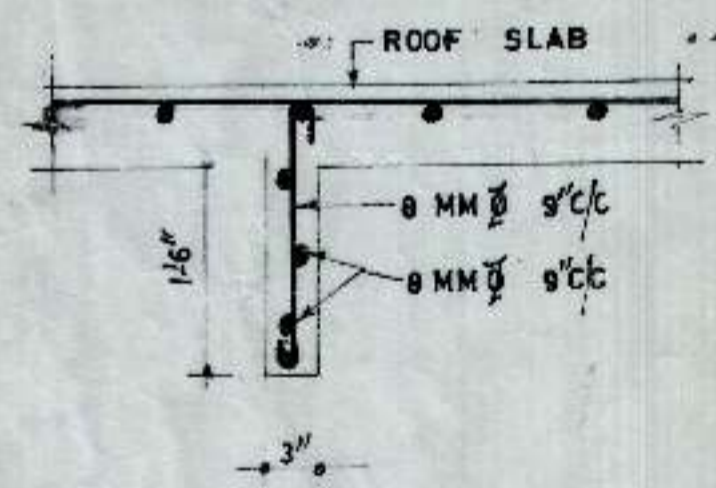


BEAM B-9

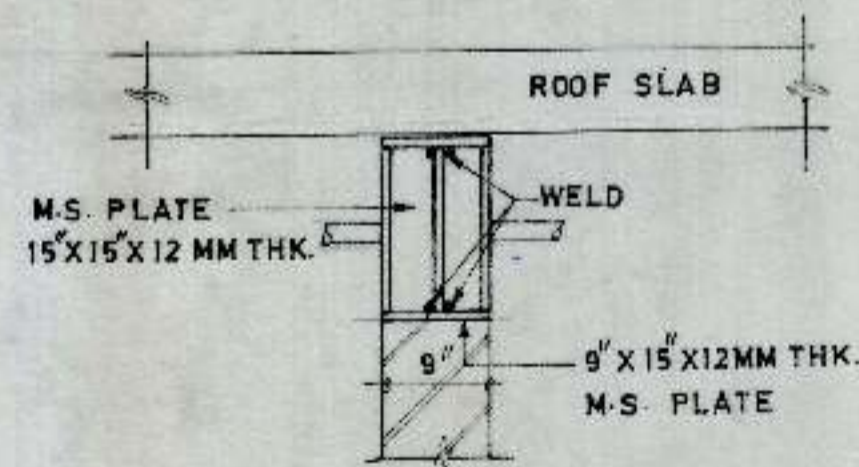
BARS IN BEAM B-9	
1 TO 5	= 16 mm Φ
STPS	= 2 L-8 mm Φ 8 @ 4" c/c



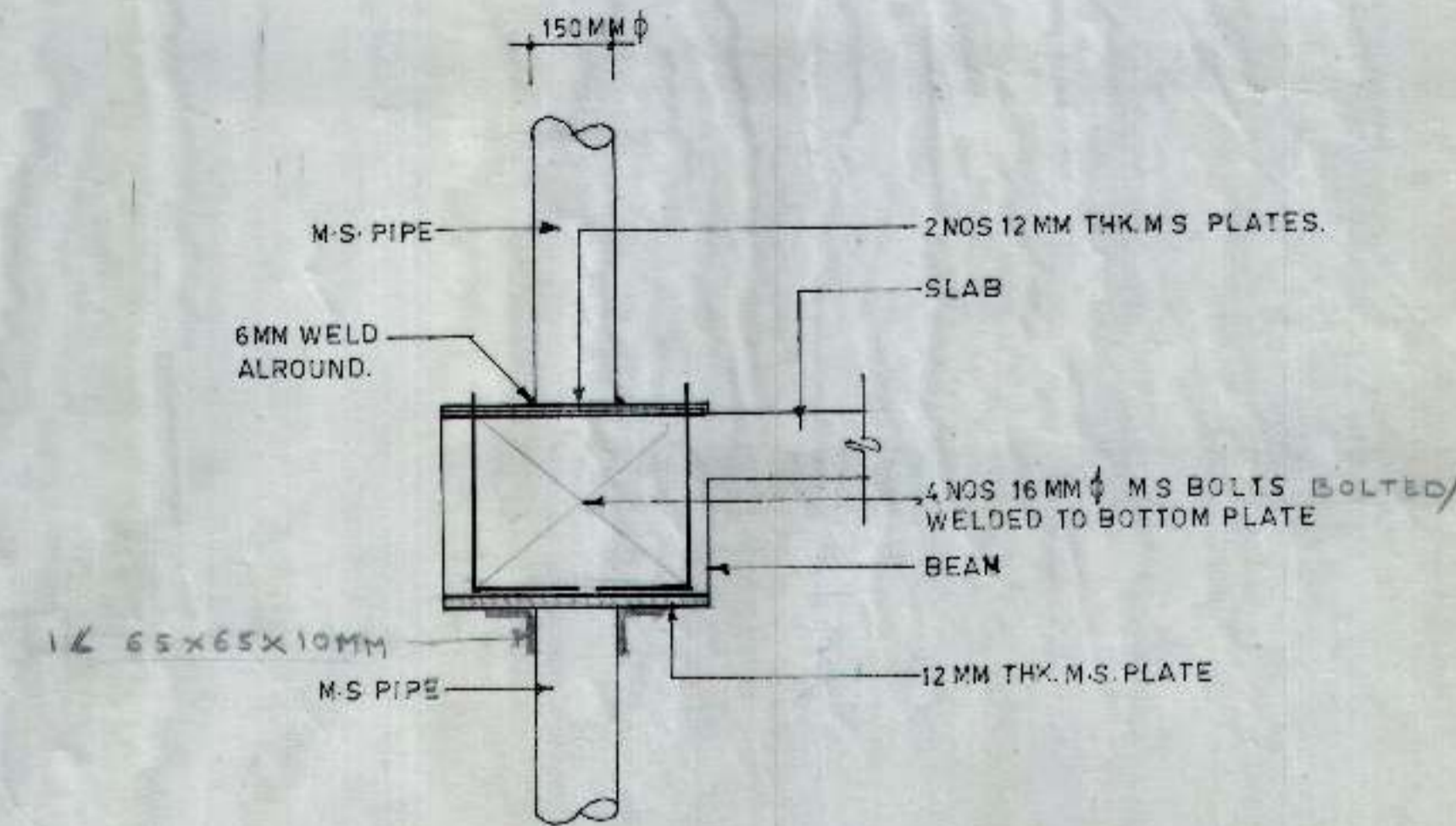
SHELF FOR R-S



ADV. PANEL



FIXING DETAIL OF R.S.



FIXING DETAIL OF M-S PIPE

NOTES:-
1. FOR STR. NOTES REFER TO STR. DRG. NO-01
JOB. NO. BRW.

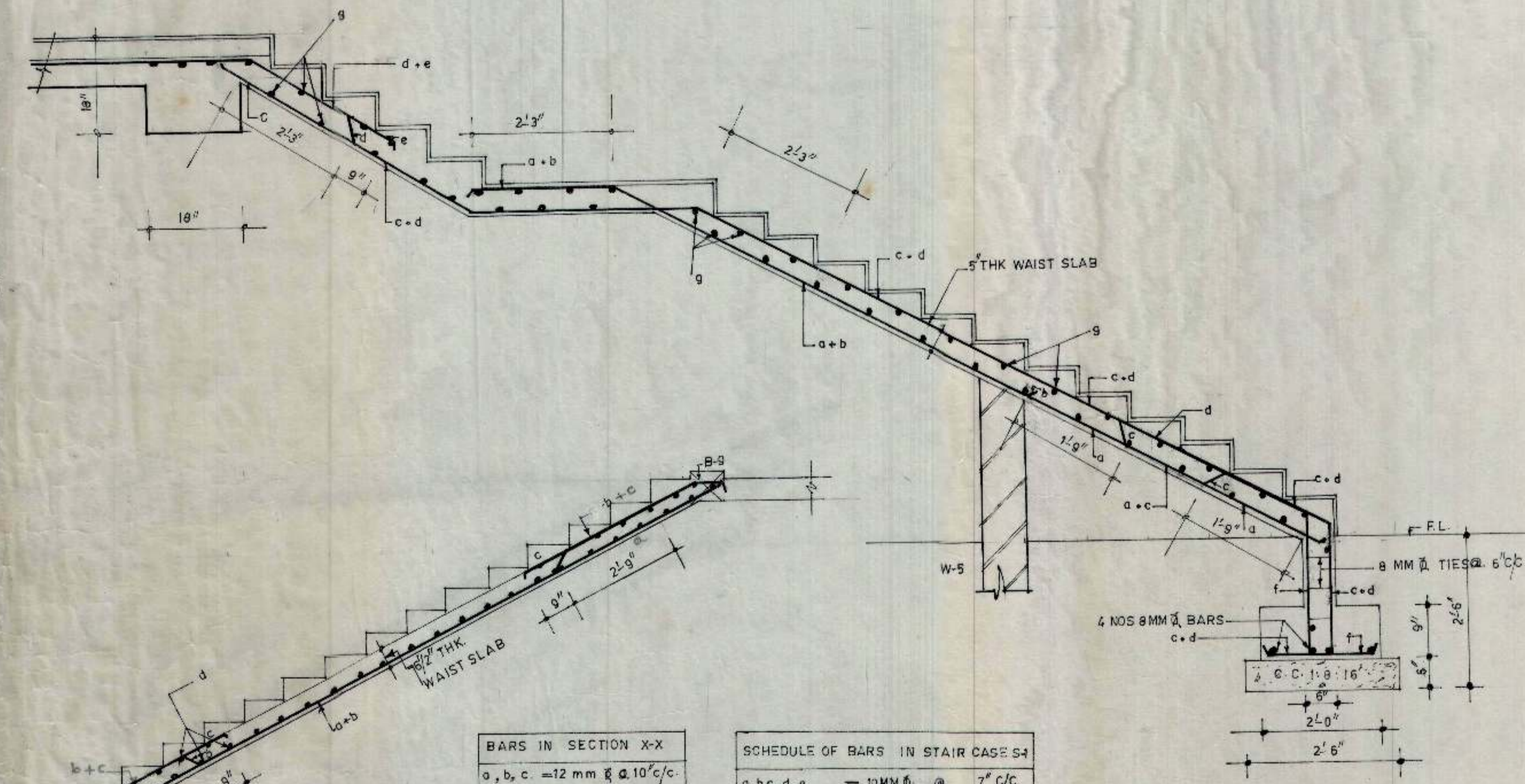
ARCHITECT:-

TITLE:-
DETAIL OF SLAB & BEAMS AT
F.F. LEVEL.

DEALT BY:- J.P.K.	CHECKED BY:-
SCALE:- 3/4" = 1'-0"	DATED:- JULY, 2000
JOB NO.:- BRW	DRG. NO.:- 03

UNCTION DESIGNS
S.CO. 1136-37 1ST FL., SECTOR-22B
CHANDIGARH.

NOTES:-
1. FOR STR. NOTES REFER TO STR. DRG. NO. =01, JOB. NO. BRW.



BARS IN SECTION X-X	
a, b, c	= 12 mm ϕ @ 10" c/c
d	= 8 mm ϕ @ 8" c/c
e	= 10 mm ϕ @ 5" c/c

SCHEDULE OF BARS IN STAIR CASE S-1	
a, b, c, d, e	= 10MM ϕ @ 7" c/c
f	= 10MM ϕ @ 3 1/2" c/c
g	= 8MM ϕ @ 8" c/c

STAIR CASE S-1

For Section Design
Sudhakar
Prop.

JOB NO - 109

UNCTION DESIGNS

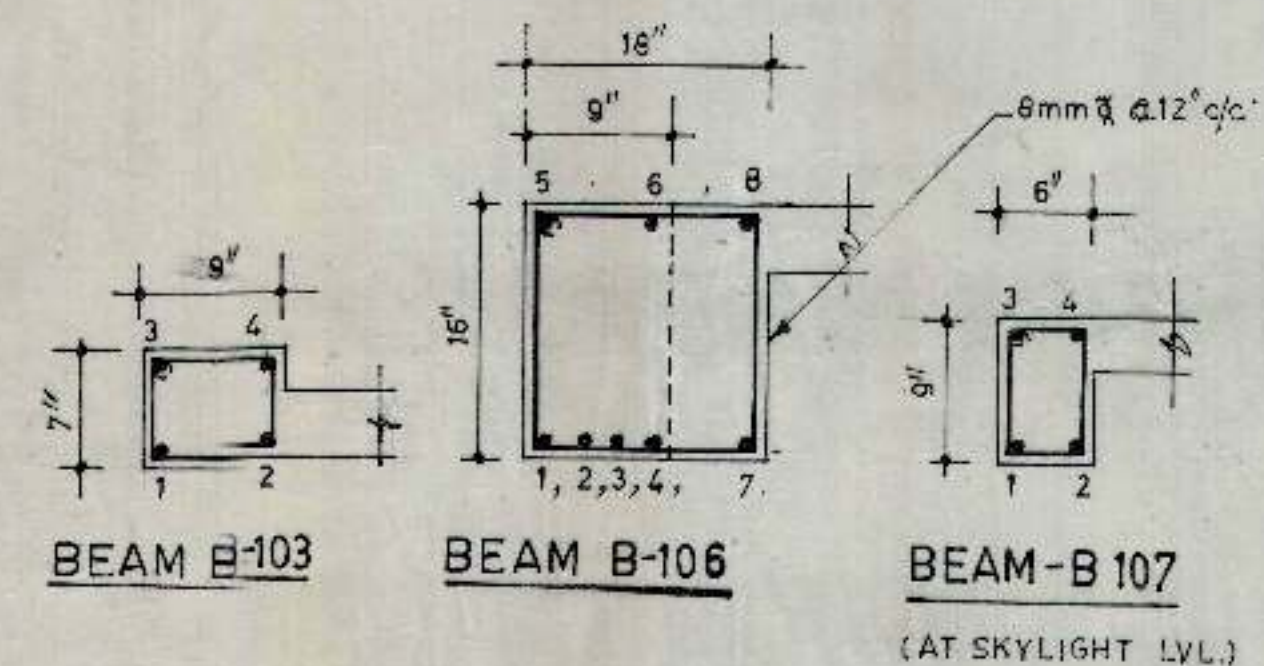
SECTION AT X-X
(REFER DRG. NO.02)

DEA.
SCALE 3/4
JOB. NO.
BR

BOOTHS FOR REHRI
WORKER SECTOR 46-B
CHANDIGARH.

FOR DETAIL OF			
REFER TO			
BEAM NO.	BEAM NO.	DRG. NO.	JOB. NO.
B-101	B-2	02	BRW.
B-102	B-2	02	BRW.
B-104	B-4	02	BRW.
B-105	B-5	02	BRW.
B-109	B-6	03	BRW.

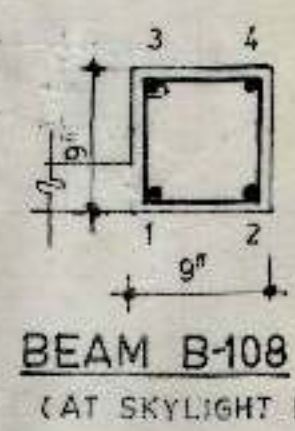
BARS IN SLAB	
a, b, c, d	= 8MM Ø @ 16" C/C.
e, f	= 10MM Ø @ 14" C/C.
h, i, j	= 10MM Ø @ 10" C/C.
k, l, m, n	= 8MM Ø @ 16" C/C.
g	= 8MM Ø @ 9" C/C.
A	= 8MM Ø @ 7" C/C.
p, q	= 12MM Ø @ 12" C/C.
r	= 8MM Ø @ 12" C/C.
s	= 8MM Ø @ 9" C/C.



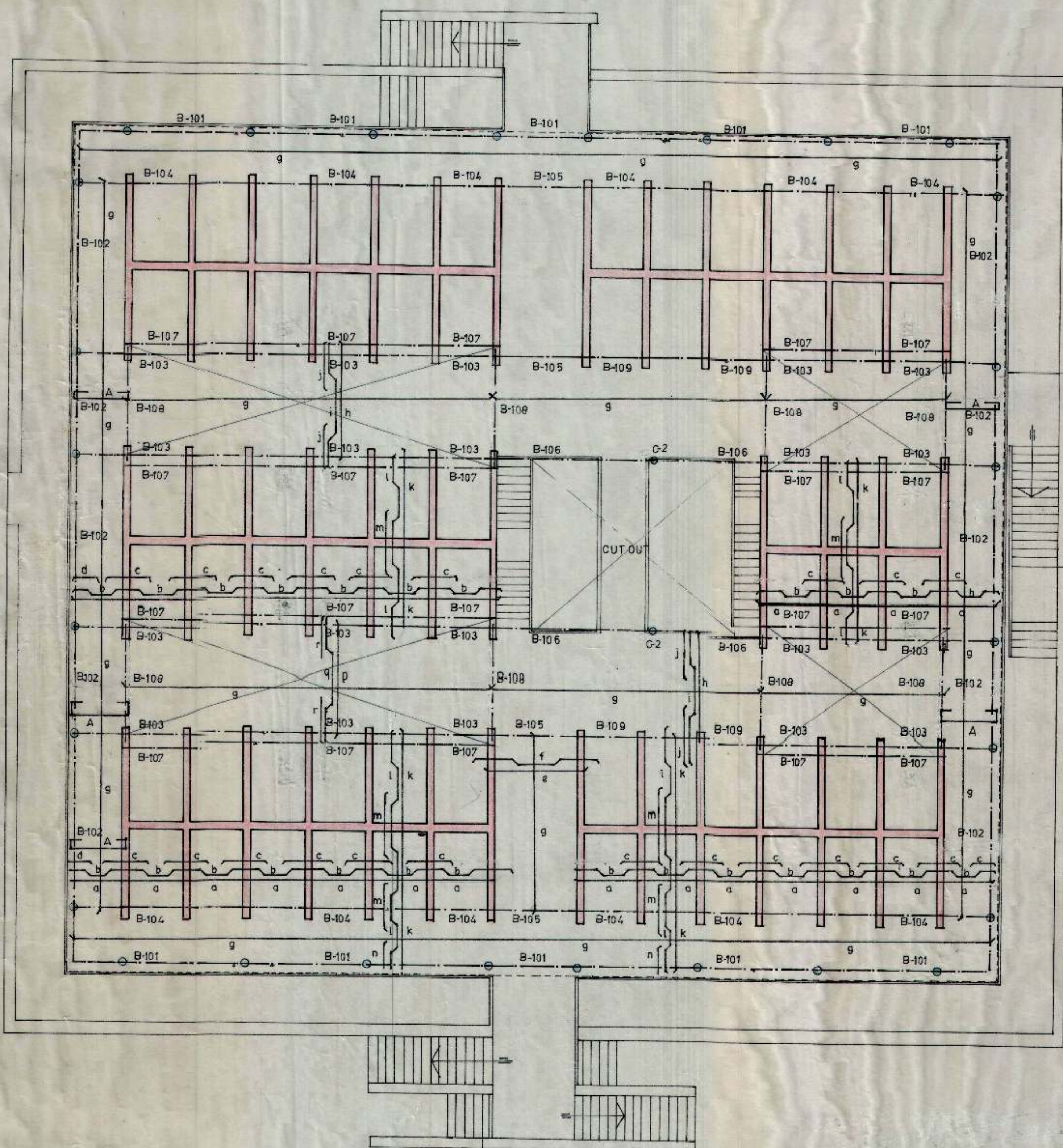
BARS IN BEAM B-103	
1 TO 4	= 12MM Ø
STPS	= 2L-8MM Ø @ 5 1/2" C/C

BARS IN BEAM B-106	
1 TO 6	= 16MM Ø
CRANK	= 2, 3 AT SUPPORTS
STPS	= 2L-8MM Ø @ 6" C/C
REST	= 9" C/C FROM SUPPORTS.
7, 8	= 10mm Ø

BARS IN BEAM B-107	
1 TO 4	= 12MM Ø
STPS	= 2L-8MM Ø @ 5 1/2" C/C



BARS IN BEAM B-108	
1 TO 4	= 12MM Ø
STPS	= 2L-8MM Ø @ 5 1/2" C/C



KEY PLAN (FIRST F.)

ARCHITECT:
For Record Design
Sukh Singh
Prop.

JOB NO. 109

TITLE- DETAIL OF BEAMS/SLABS
AT TERRACE LEVEL.

DEALT BY B.S.T.	CHECKED BY.
SCALE 1"=10' 3/4"-10'	DATED. JULY 2000
DRG. NO. BRW.	JOB. NO. 05.

UNCTION DESIGNS
S-C-O 1136-37 (1ST. FLOOR)
SECTOR-22-B, CHANDIGARH.