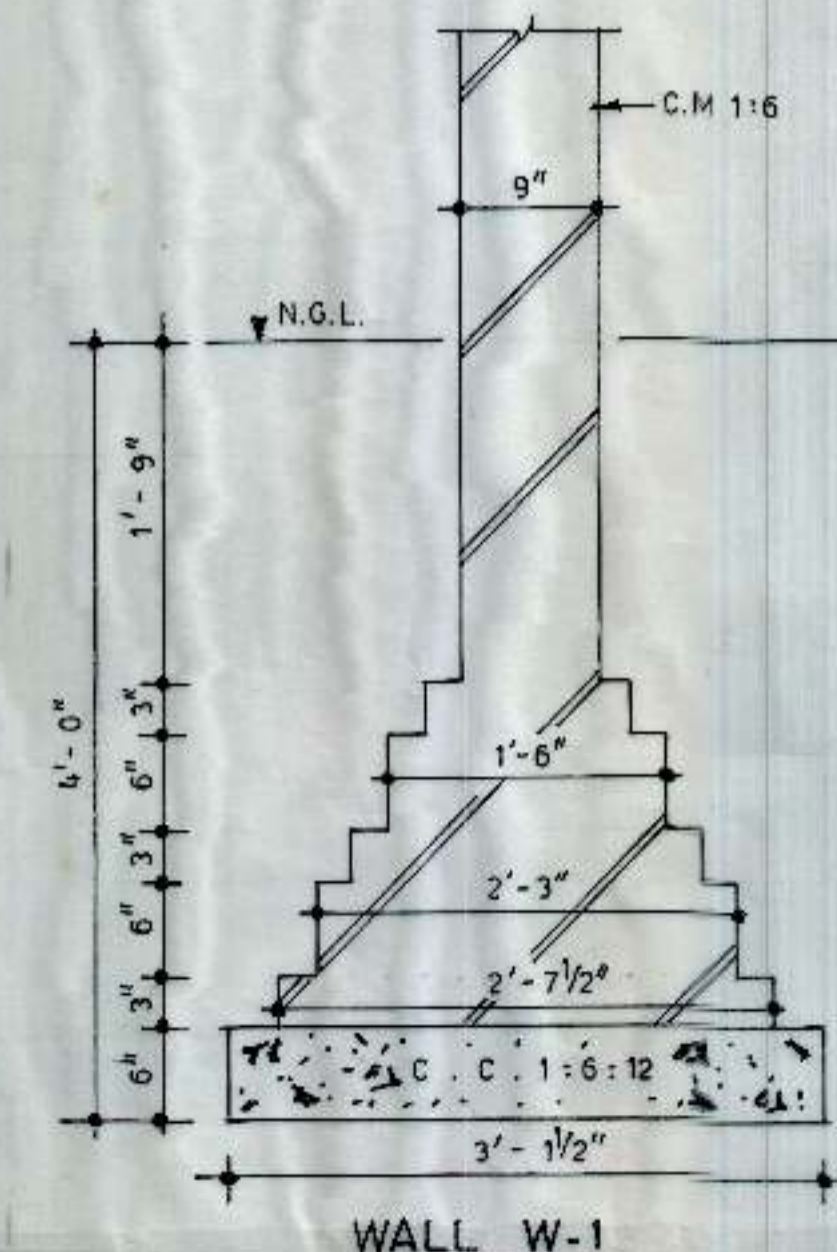
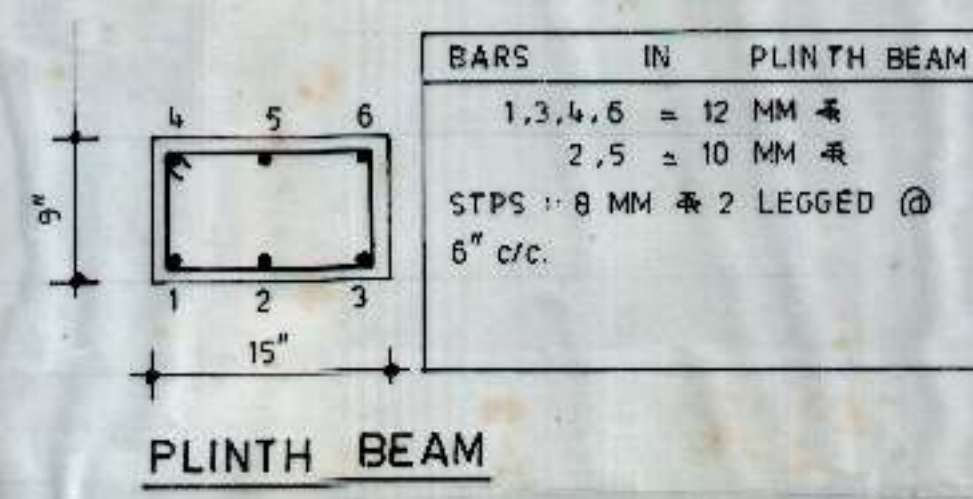
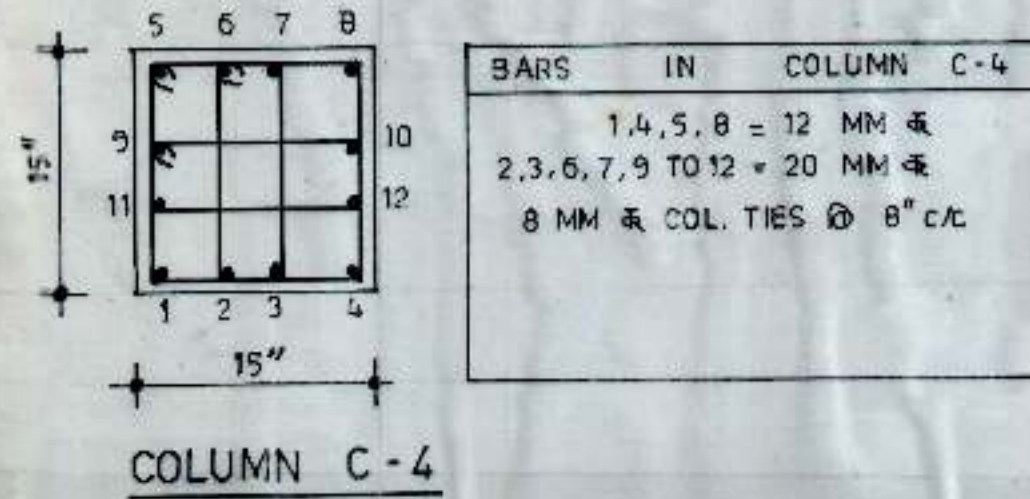
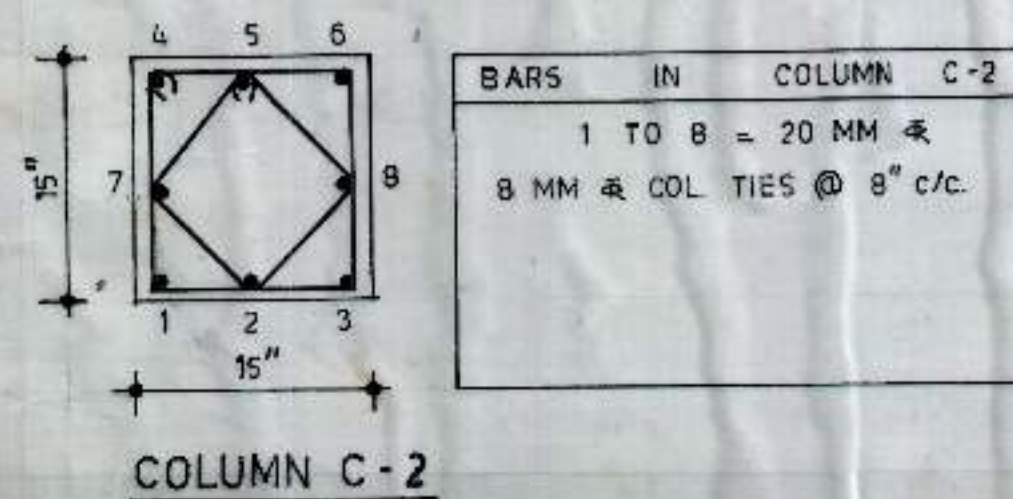
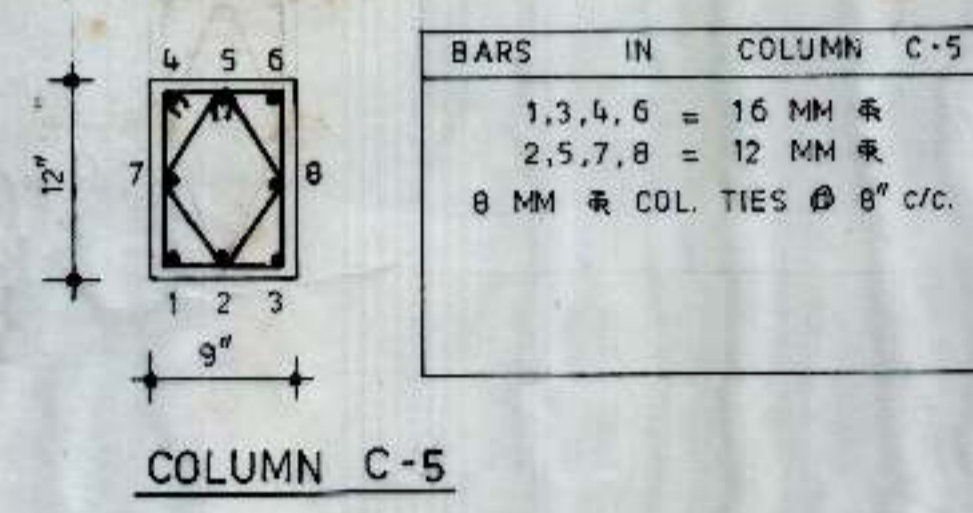
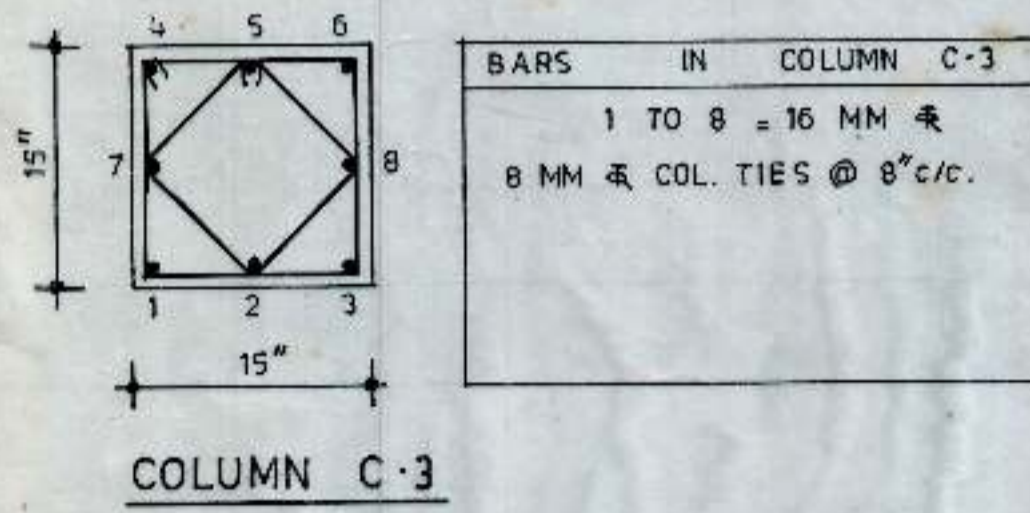
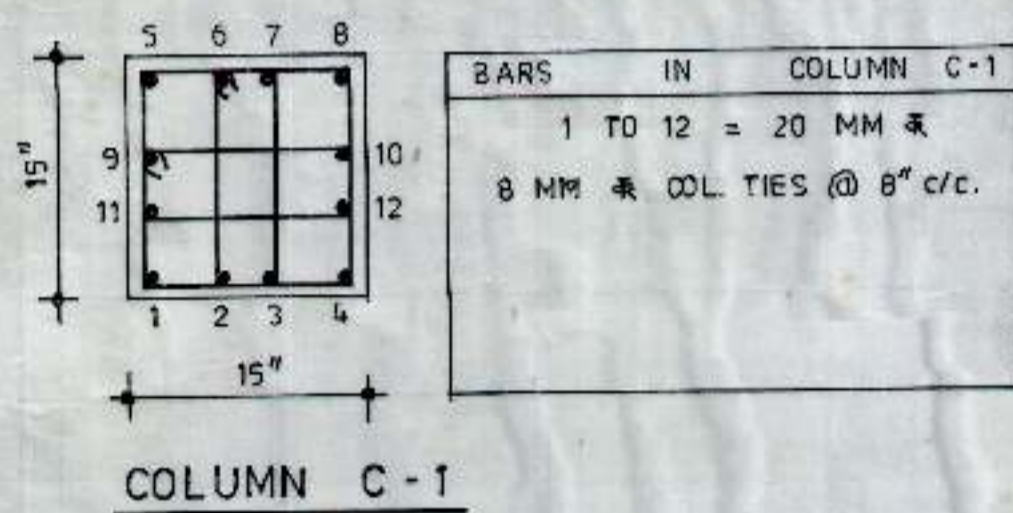
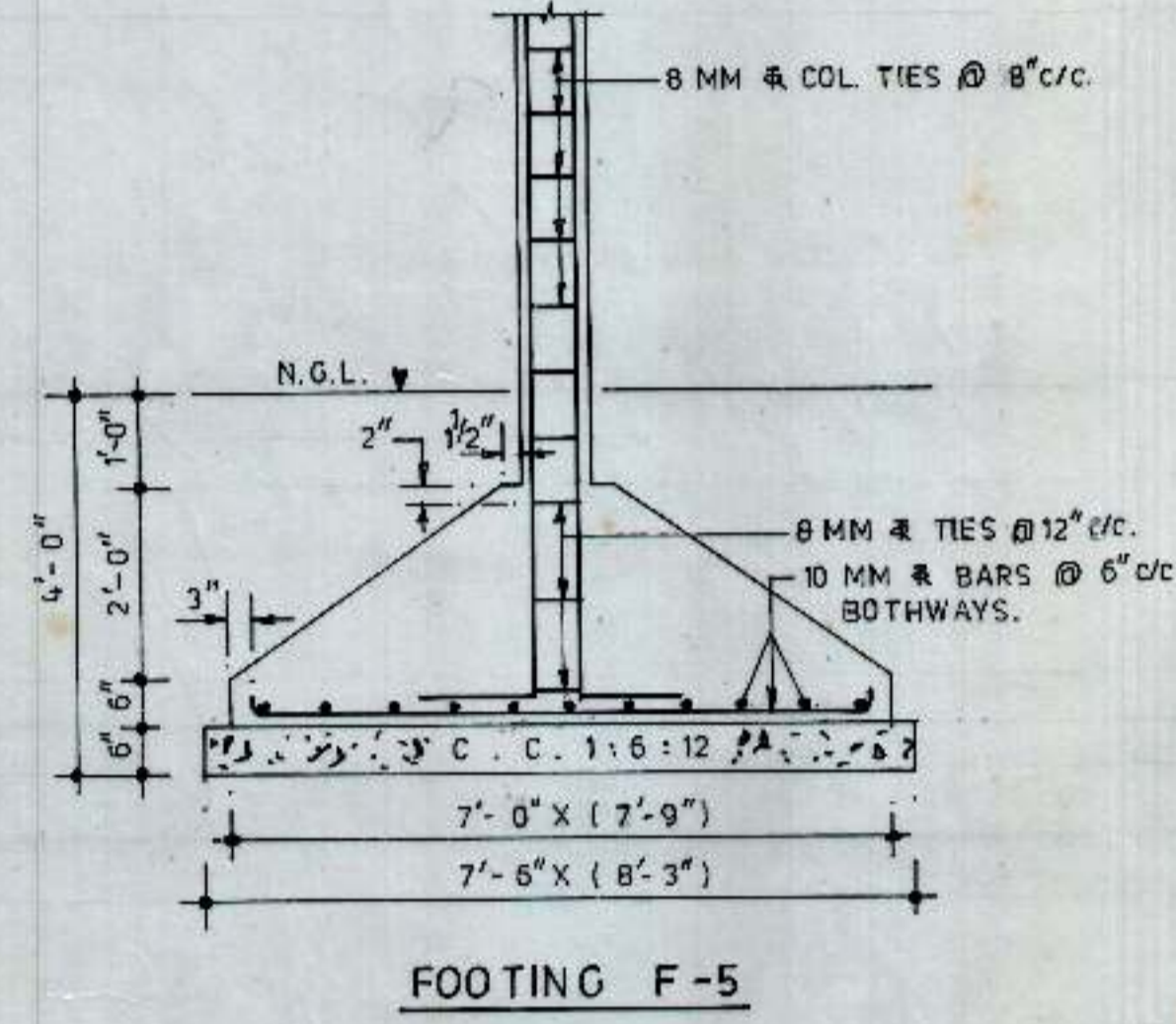
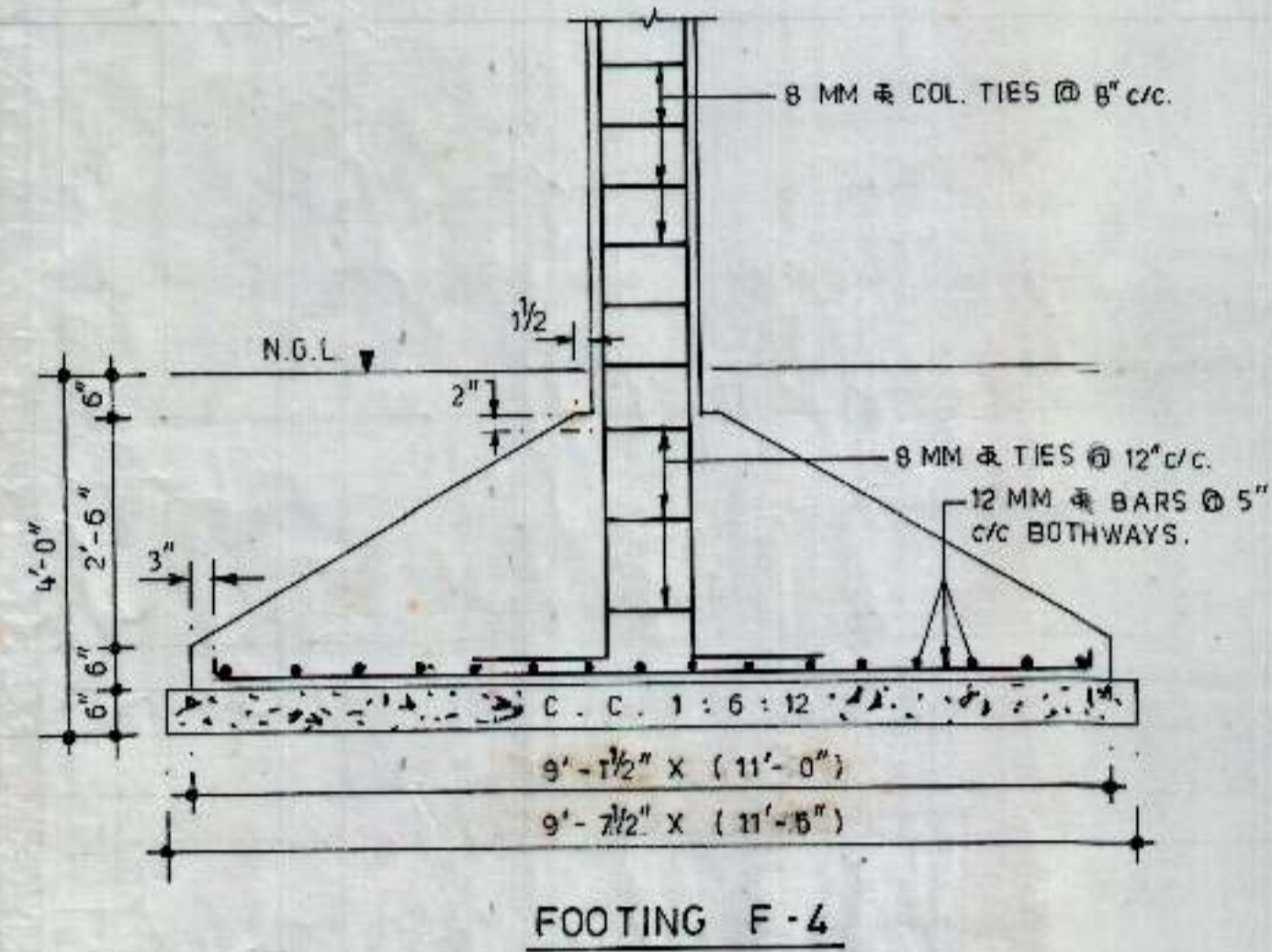
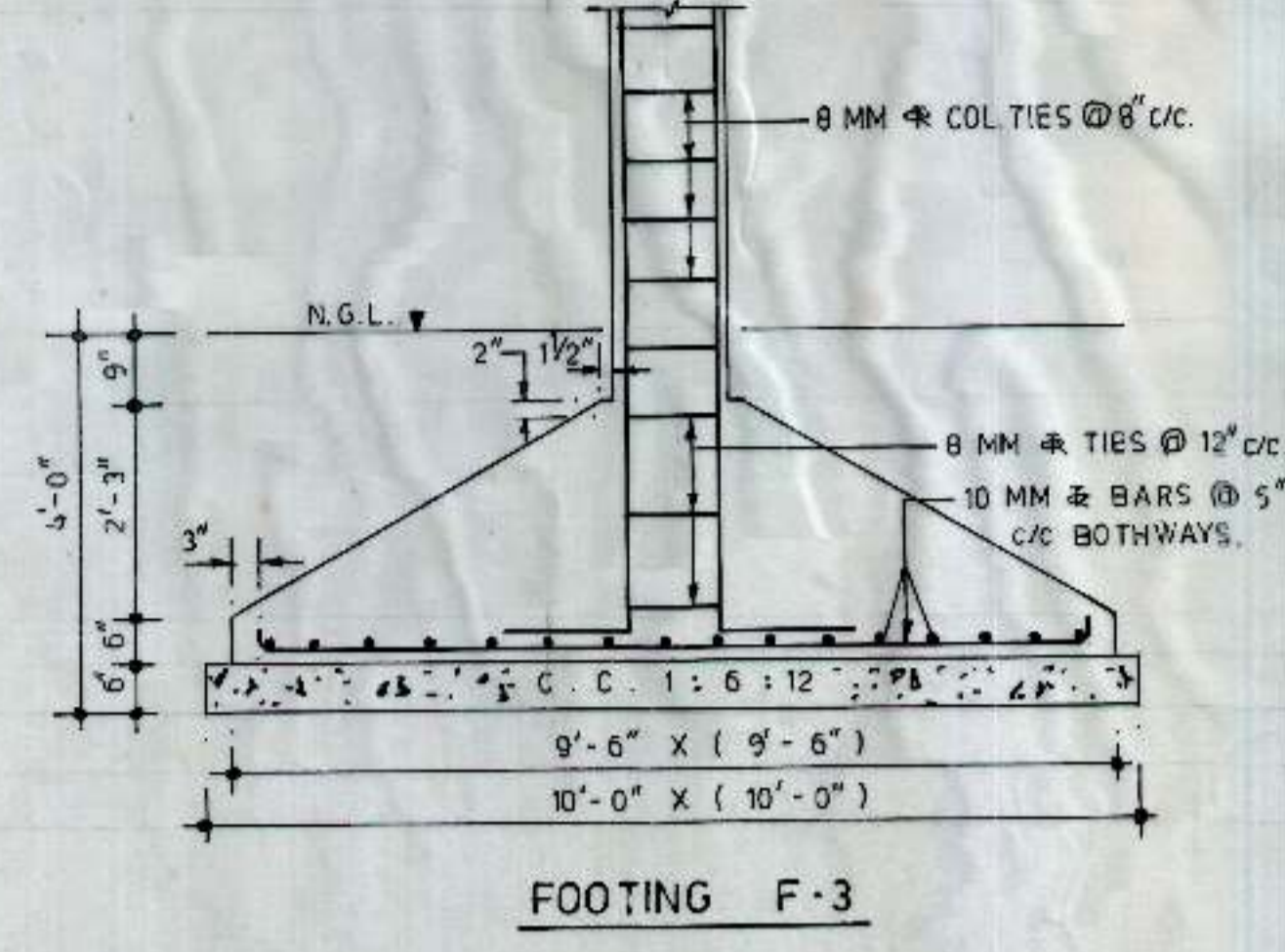
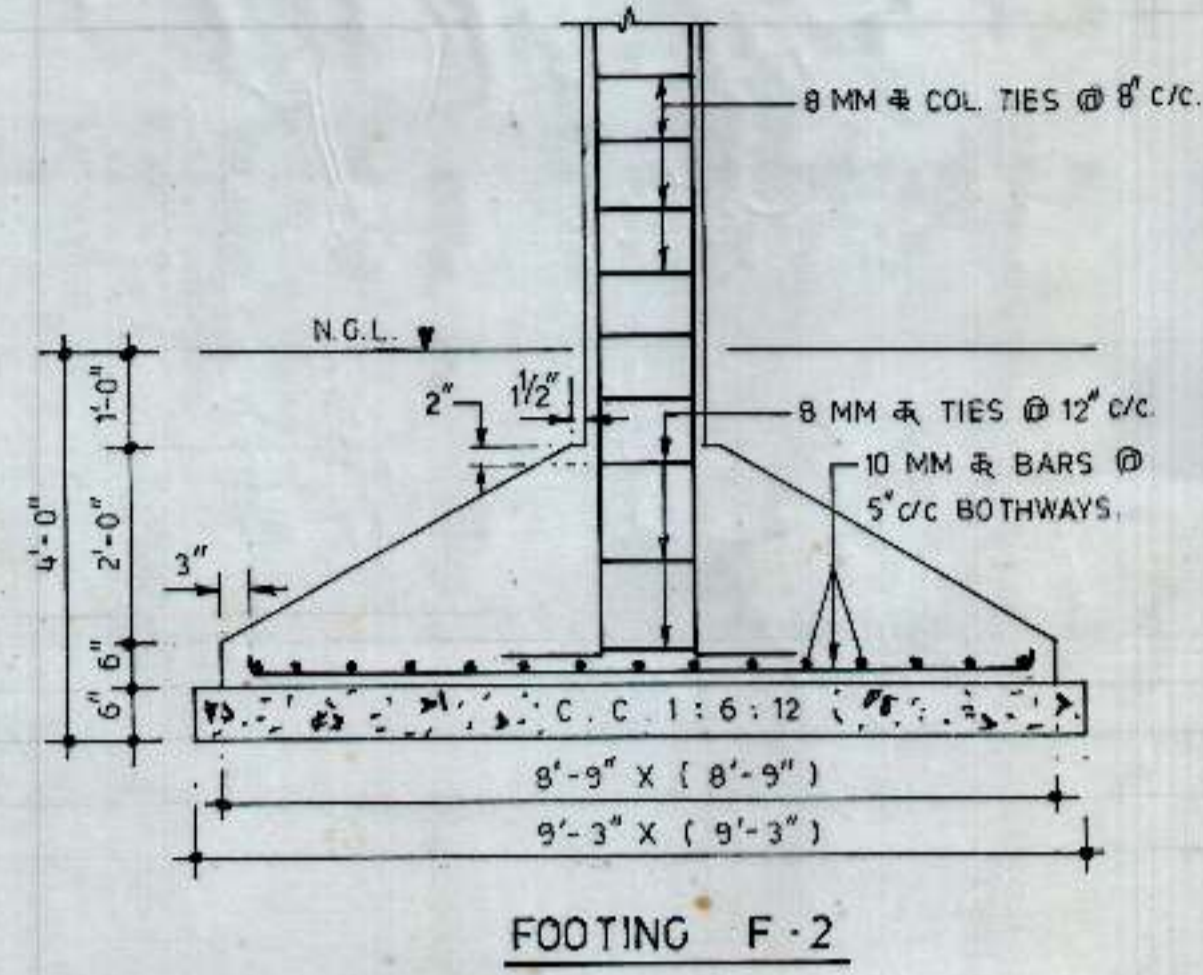
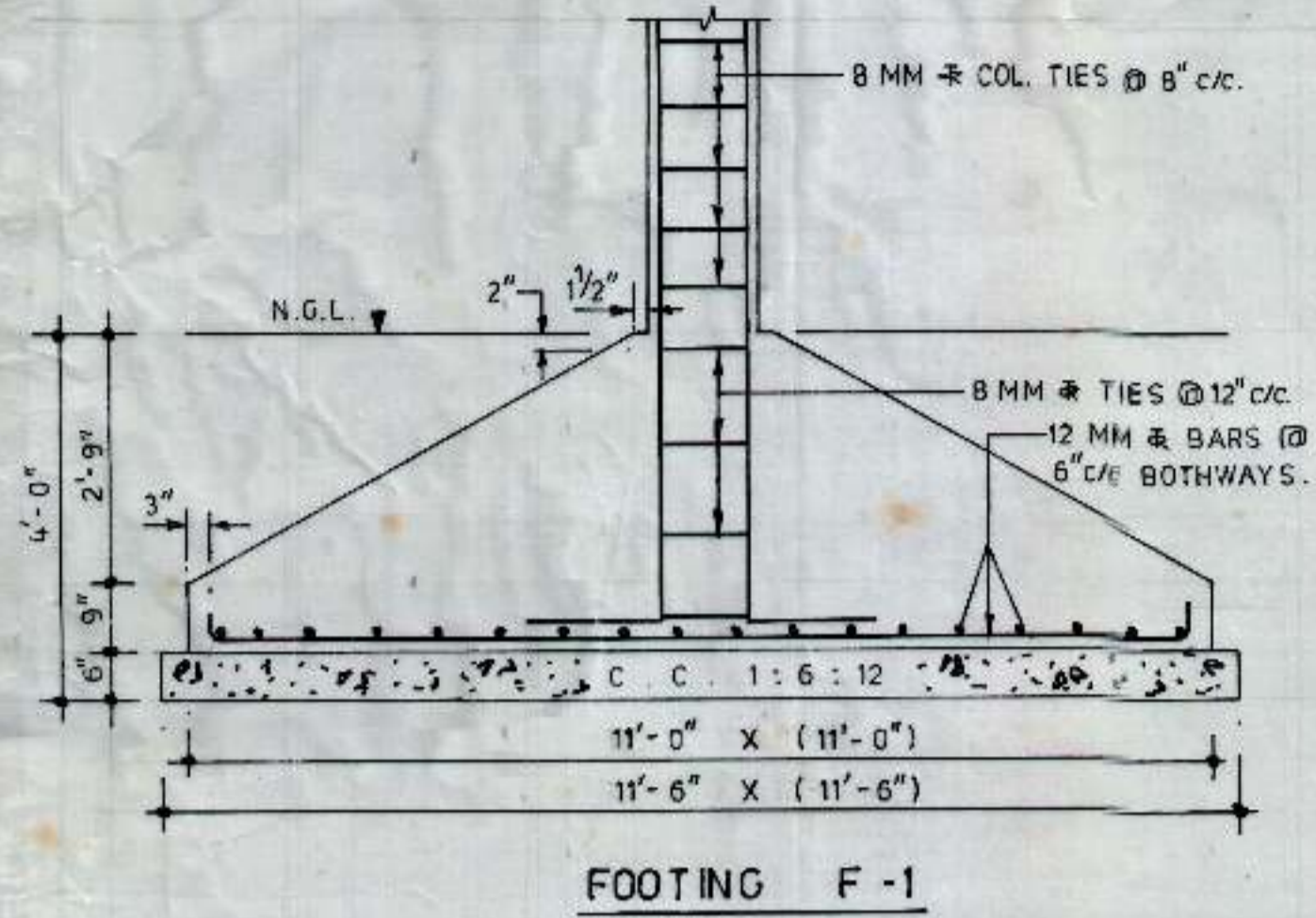


NOTES :-
1. FOR STRUCTURAL NOTES REFER DRG NO. 01, JOB NO. 3H.



CHANDIGARH
HOUSING BOARD

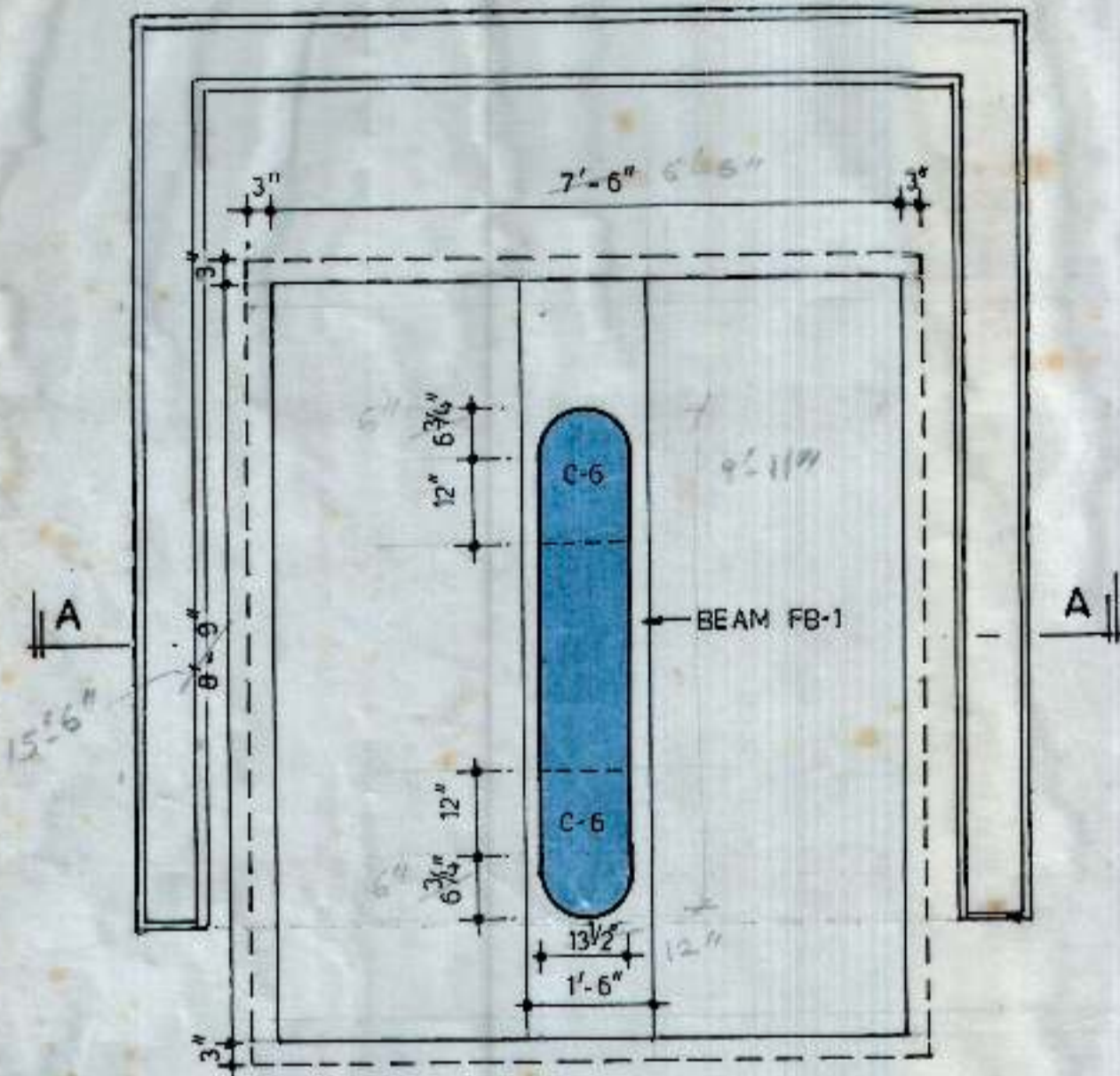
TITLE :-
DETAILS OF FOUNDATION

SCALE :- 1/2" = 1'-0"
& 1" = 1'-0"
CHECKED BY :-
DEALT BY :- K.K.
DATED :- JULY, 1995
JOB NO. :- 3H
DRG NO. :- 02

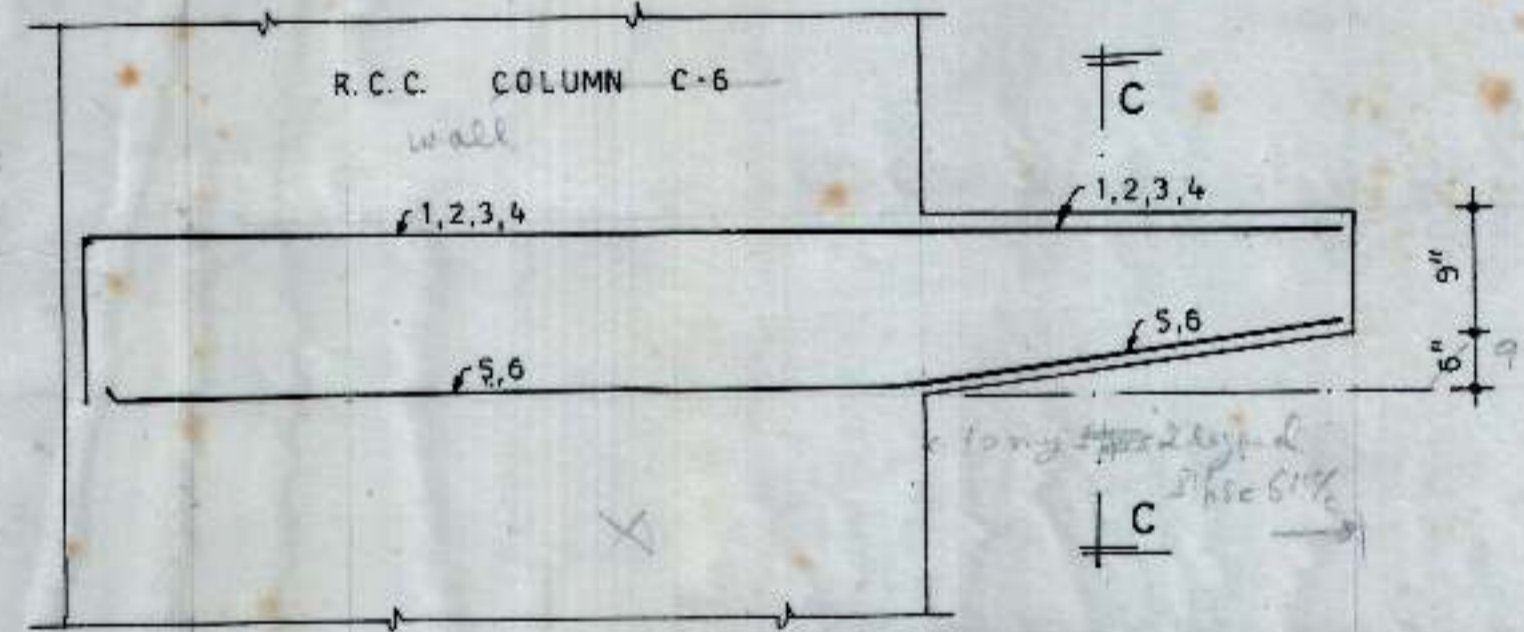
M.S.T. CONSULTANTS
S.C.F. 23, SECTOR - 16
CHANDIGARH

NOTES :-

1. FOR STRUCTURAL NOTES REFER DRG NO. 01, JOB NO. 3H.

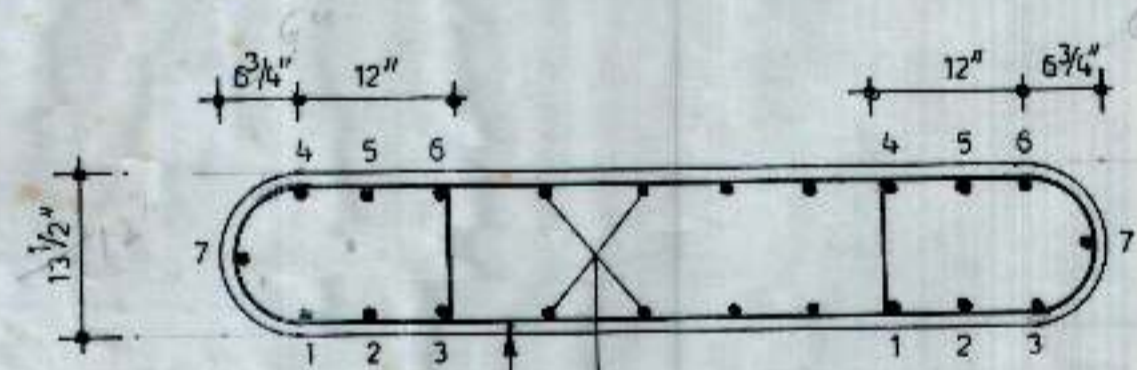


KEY PLAN (STAIRCASE)



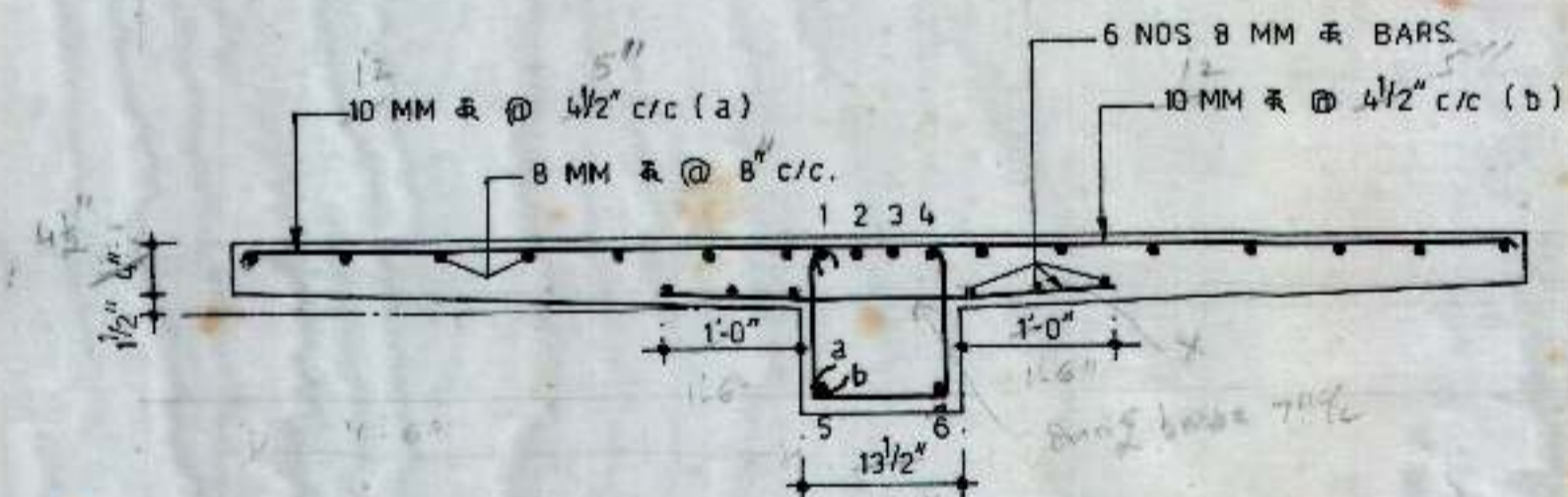
L-SECTION OF BEAM SB-1

BARS IN BEAM SB-1	
1 TO 6	= 16 MM 筋
STPS	= 8 MM 筋 2 LEGGED @ 8" c/c.

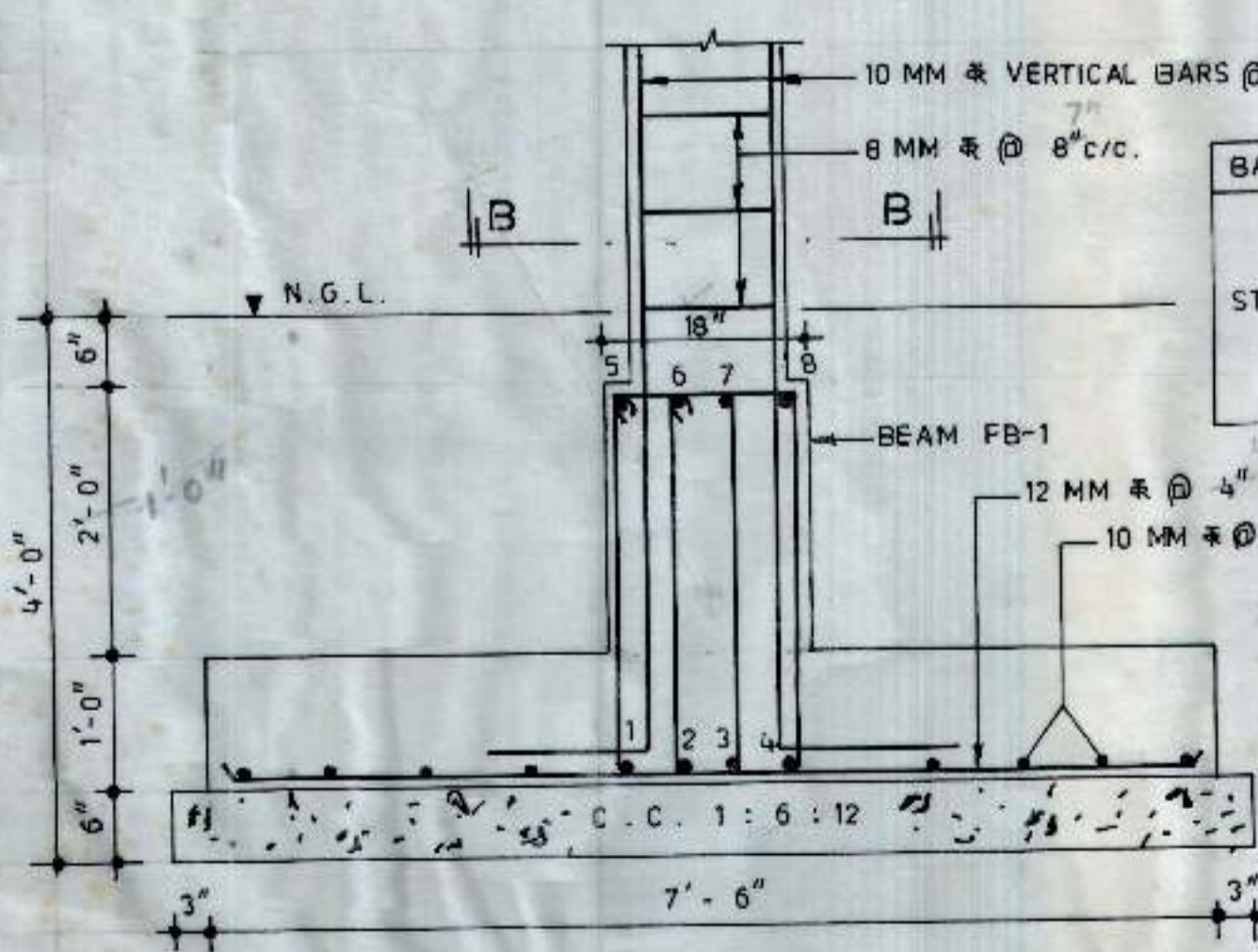


SECTION B - B

BARS IN COLUMN C-6	
1 TO 7	= 16 MM 筋
1, 3, 5	= 20mm 筋

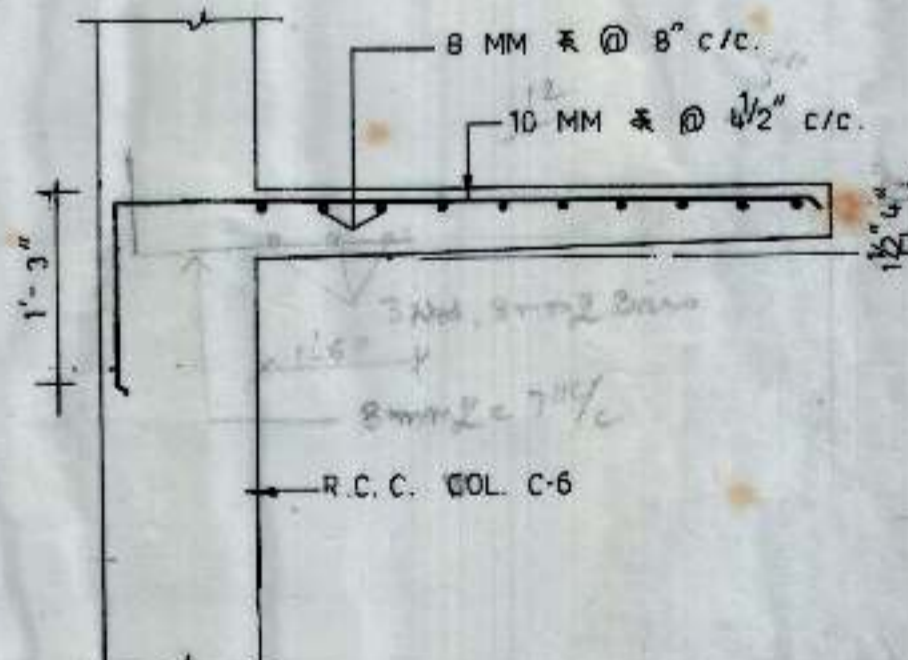


SECTION C - C (LANDING DETAIL)

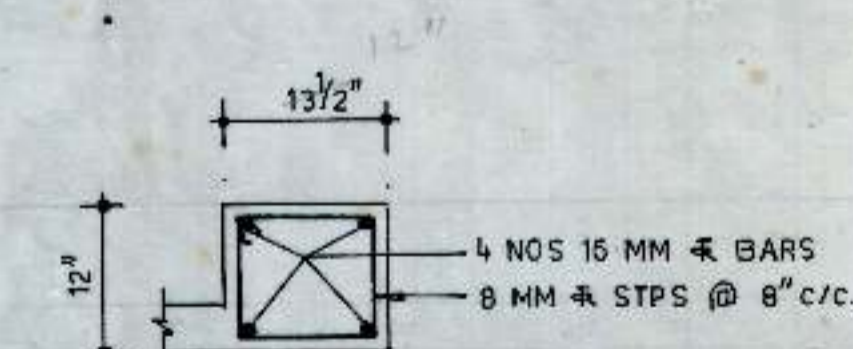


SECTION A - A

BARS IN FOUNDATION BEAM FB-1	
1 TO 4	= 16 MM 筋 20
5 TO 8	= 12 MM 筋
STPS	= 8 MM 筋 4 LEGGED @ 6" c/c.



STEP DETAIL



BEAM OVER OPENINGS

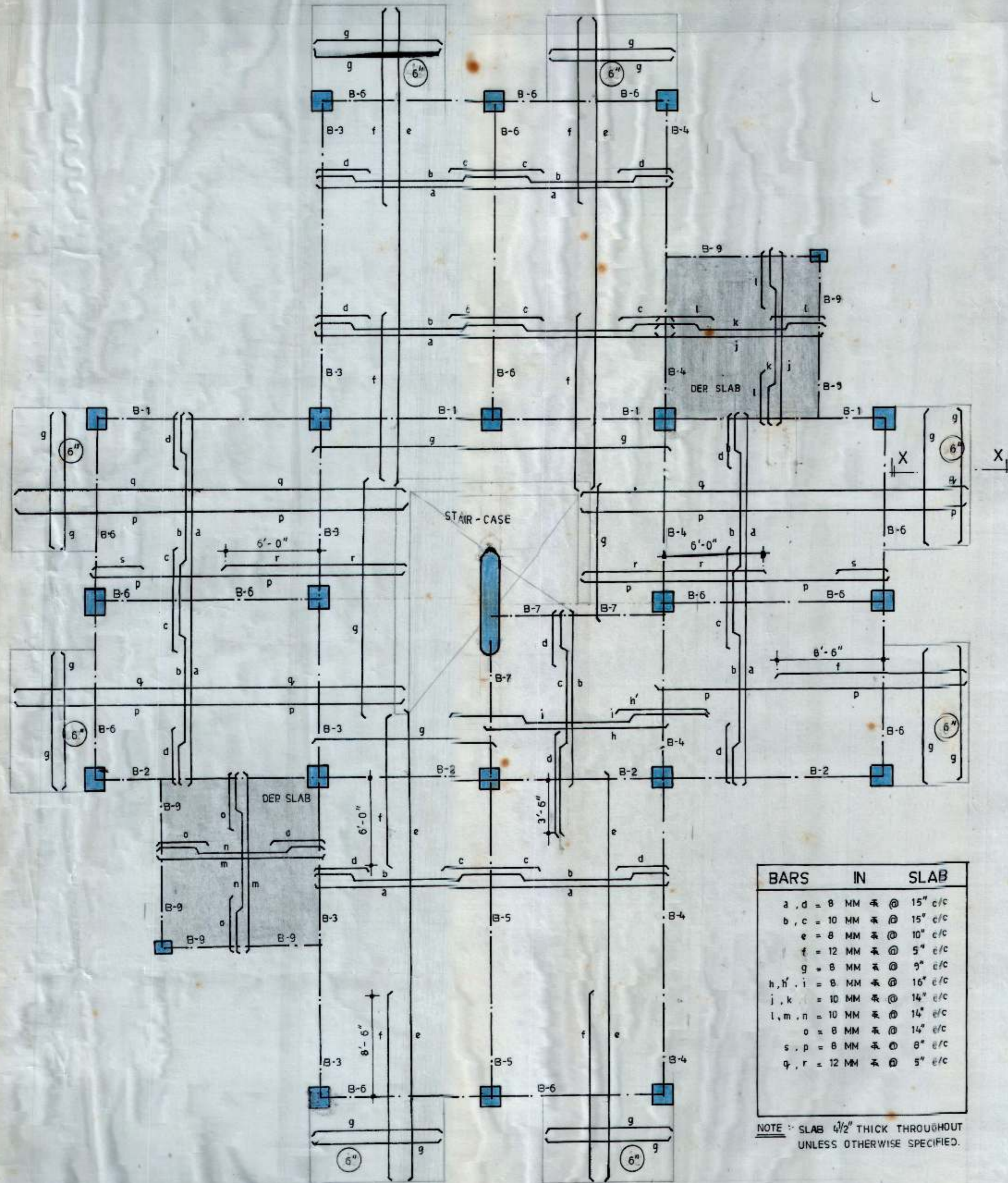
CHANDIGARH
HOUSING BOARD

TITLE :-
DETAILS OF STAIR-CASE

SCALE :- 1/2" = 1'-0" & 3/4" = 1'-0"	CHECKED BY :-
DEALT BY :- K.K.	DATED :- JULY, 1995
JOB NO. :- 3H	DRG NO. :- 03

M.S.T. CONSULTANTS
S.C.F. 23, SECTOR - 16
CHANDIGARH

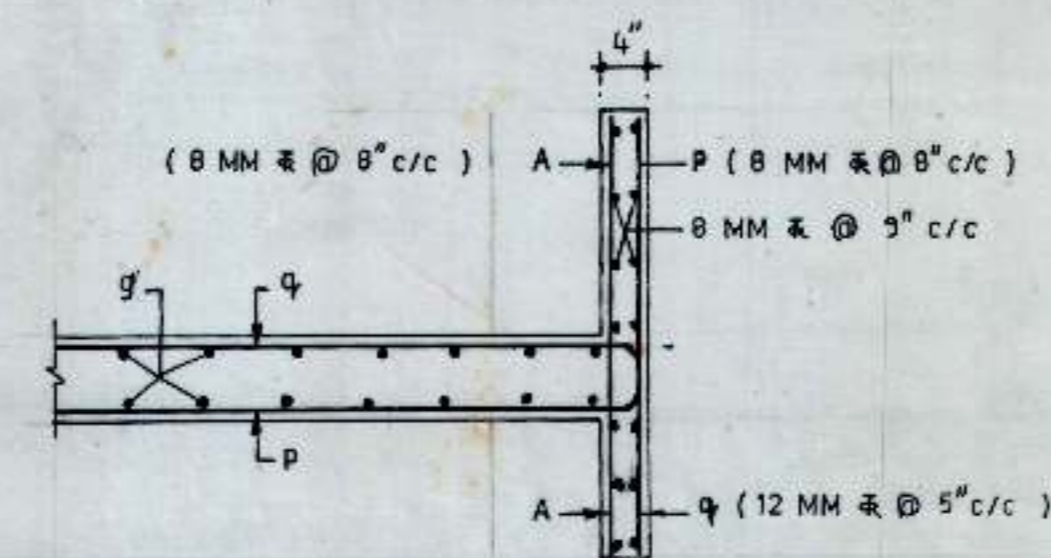
NOTES :-
1. FOR STRUCTURAL NOTES REFER DRG NO. 01, JOB NO. 3H.



KEY PLAN

BARS	IN	SLAB
a, d	=	8 MM 英 @ 15" c/c
b, c	=	10 MM 英 @ 15" c/c
e	=	8 MM 英 @ 10" c/c
f	=	12 MM 英 @ 5" c/c
g	=	8 MM 英 @ 9" c/c
h, h', i	=	8 MM 英 @ 16" c/c
j, k	=	10 MM 英 @ 14" c/c
l, m, n	=	10 MM 英 @ 14" c/c
o	=	8 MM 英 @ 14" c/c
s, p	=	8 MM 英 @ 6" c/c
q, r	=	12 MM 英 @ 5" c/c

NOTE :- SLAB 4 1/2" THICK THROUGHOUT UNLESS OTHERWISE SPECIFIED.



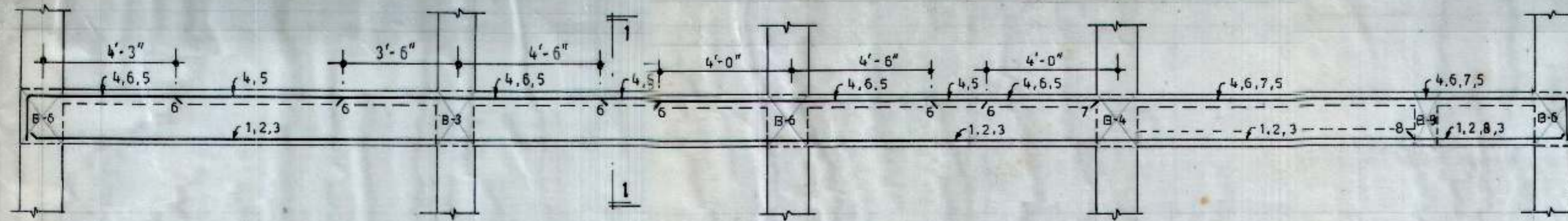
SECTION X - X

CHANDIGARH
HOUSING BOARD

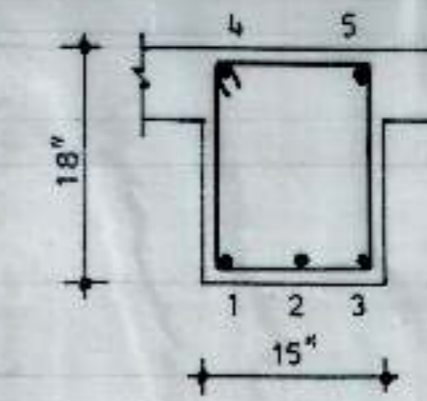
TITLE :-
DETAILS OF SLAB & BEAMS
AT 1ST & 3RD FLOOR LEVEL.

SCALE :- 1/4" = 1'-0"	CHECKED BY :-
DEALT BY :- K.K.	DATED :- AUG., 1995
JOB NO. :- 3H	ORG NO. :- 04

M.S.T. CONSULTANTS
S.C.F. 23, SECTOR - 16
CHANDIGARH

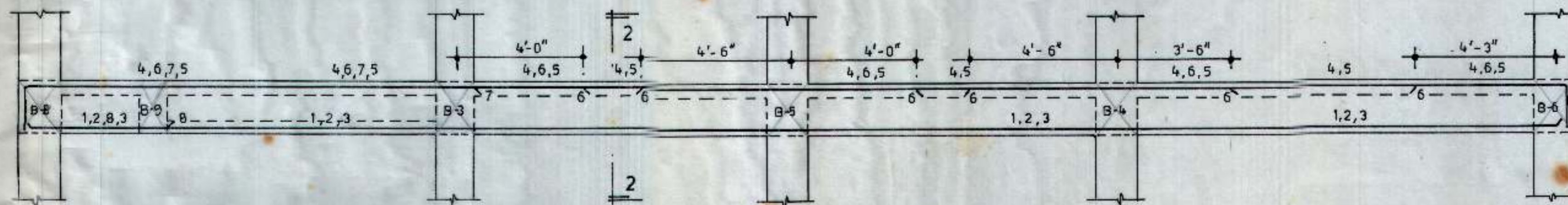


BEAM B-1

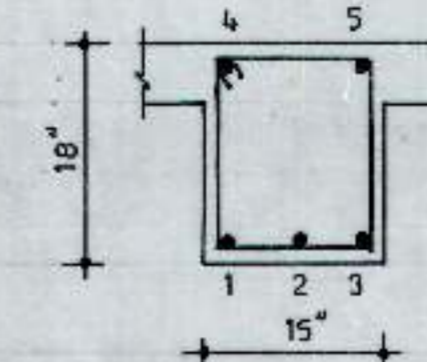


SECTION 1 - 1

BARS IN BEAM B-1	
1 TO 8	= 16 MM 筋
STPS : 8 MM 筋 2 LEGGED 8 @ 4 1/2" c/c + REST @ 9" c/c FROM SUPPORTS.	

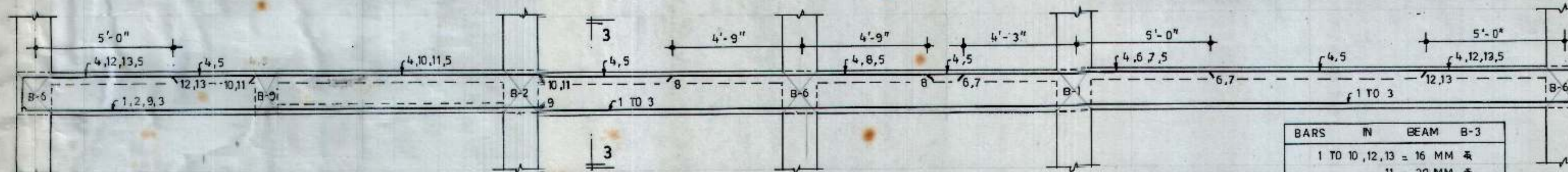


BEAM B-2

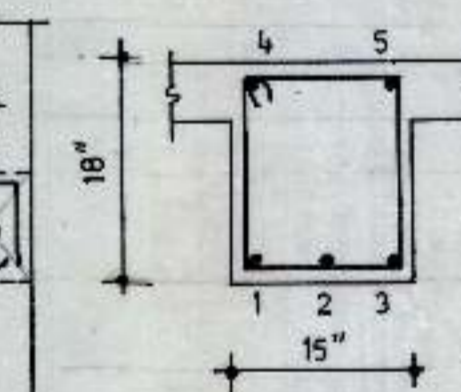


SECTION 2 - 2

BARS IN BEAM B-2	
1 TO 8	= 16 MM 筋
STPS : 8 MM 筋 2 LEGGED 8 @ 4 1/2" c/c + REST @ 9" c/c FROM SUPPORTS.	

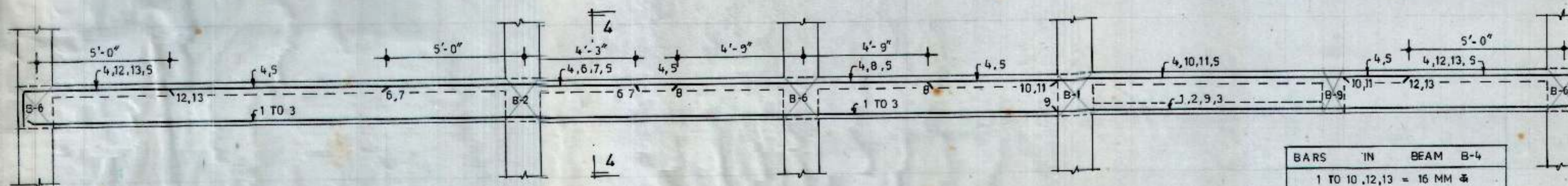


BEAM B-3

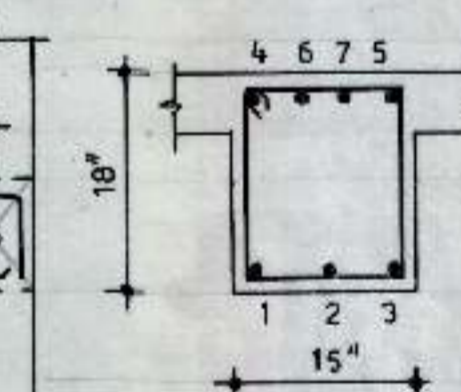


SECTION 3 - 3

BARS IN BEAM B-3	
1 TO 10, 12, 13	= 16 MM 筋
11	= 20 MM 筋
STPS : 8 MM 筋 2 LEGGED 8 @ 4 1/2" c/c + REST @ 9" c/c FROM SUPPTS.	

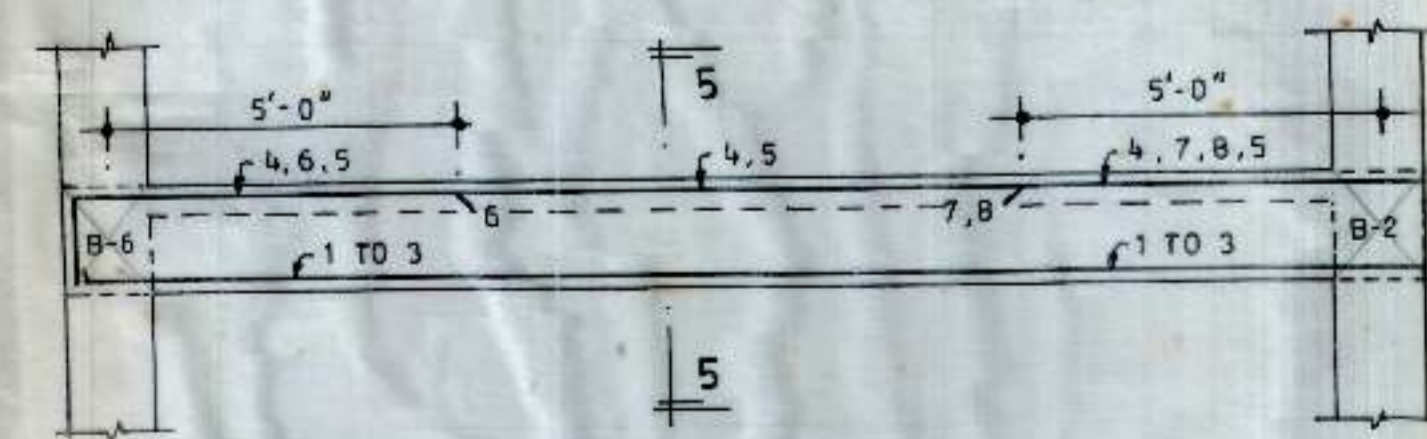


BEAM B-4

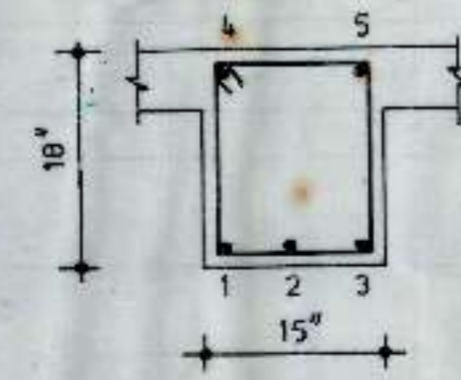


SECTION 4 - 4

BARS IN BEAM B-4	
1 TO 10, 12, 13	= 16 MM 筋
11	= 20 MM 筋
STPS : 8 MM 筋 2 LEGGED 8 @ 4 1/2" c/c + REST @ 9" c/c FROM SUPPORTS.	

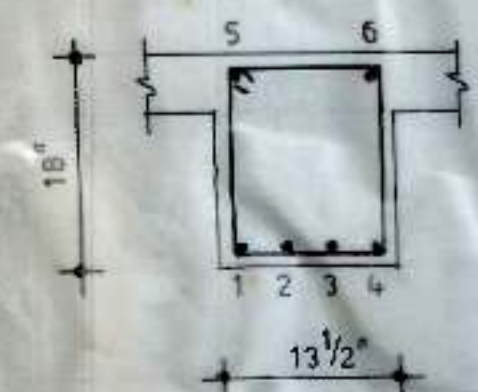


BEAM B-5



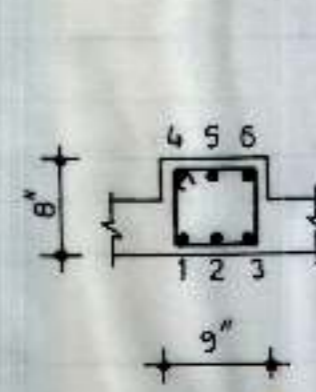
SECTION 5 - 5

BARS IN BEAM B-5	
1, 3 TO 8	= 16 MM 筋
2	= 12 MM 筋
STPS : 8 MM 筋 2 LEGGED 8 @ 4 1/2" c/c + REST @ 8" c/c FROM SUPPORTS.	



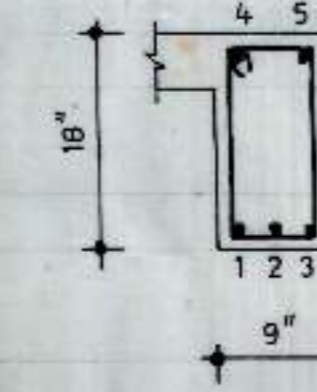
BEAM B-6

BARS IN BEAM B-6	
1, 4, 5, 6	= 16 MM 筋
2, 3	= 16 MM 筋
CRANK BAR 2, 3 AT 2'-3" FROM SUPPORTS.	
STPS : 8 MM 筋 2 LEGGED 8 @ 4 1/2" c/c + REST @ 9" c/c FROM SUPPORTS.	



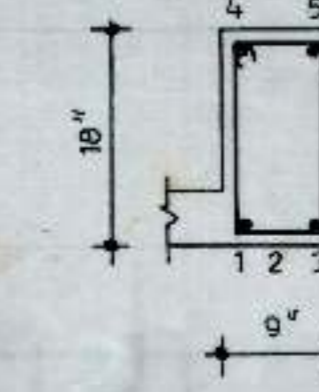
BEAM B-7

BARS IN BEAM B-7	
1 TO 6	= 16 MM 筋
STPS : 8 MM 筋 2 LEGGED @ 4 1/2" c/c	



BEAM B-8

BARS IN BEAM B-8	
1 TO 5	= 12 MM 筋
STPS : 8 MM 筋 2 LEGGED @ 9" c/c	



BEAM B-9

BARS IN BEAM B-9	
1 TO 5	= 12 MM 筋
STPS : 8 MM 筋 2 LEGGED @ 9" c/c	

BACHELOR HOSTEL
P.G.I., CHANDIGARH

NOTES :-
1. FOR STRUCTURAL NOTES REFER DRG NO. 01, JOB NO. 3H.

CHANDIGARH
HOUSING BOARD

TITLE :-
DETAILS OF SLAB & BEAMS
AT FIRST FLOOR LEVEL.

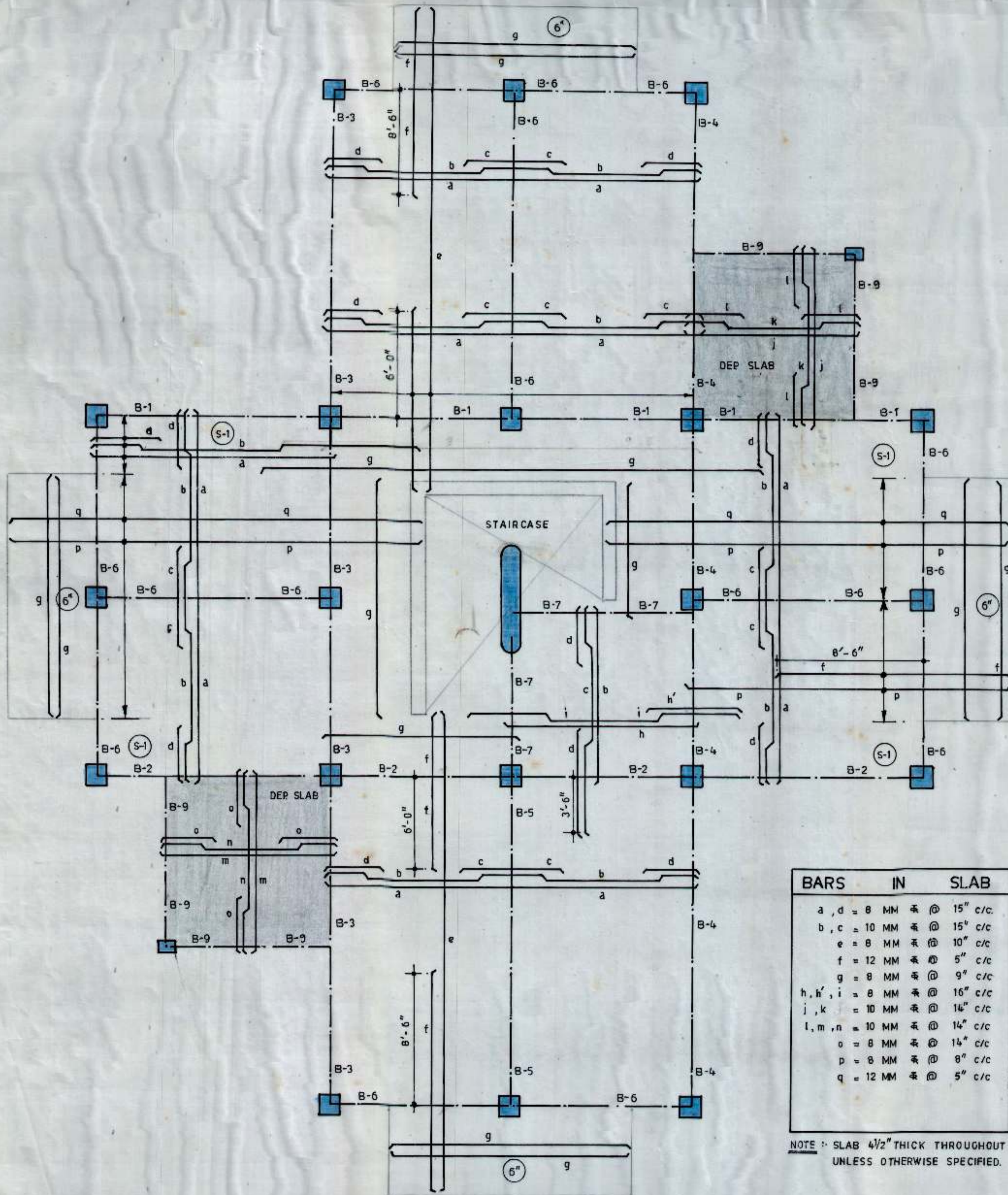
SCALE :- 3/8" = 1'-0" 8 3/4" = 1'-0"	CHECKED BY :-
DEALT BY :- K.K.	DATED :- AUG, 1995
JOB NO :- 3H	DRG NO :- 05

M.S.T. CONSULTANTS
S.C.F. 23, SECTOR - 16
CHANDIGARH

BACHELOR HOSTEL
P.G.I. CHANDIGARH

NOTES :-

1. DETAILS OF BEAM B-1 TO B-9 REFER DRG NO. 05, JOB NO. 3H.
2. FOR STRUCTURAL NOTES REFER DRG NO. 01, JOB NO. 3H.



BARS IN SLAB	
a, d	= 8 MM ̄ @ 15" c/c
b, c	= 10 MM ̄ @ 15" c/c
e	= 8 MM ̄ @ 10" c/c
f	= 12 MM ̄ @ 5" c/c
g	= 8 MM ̄ @ 9" c/c
h, h', i	= 8 MM ̄ @ 16" c/c
j, k	= 10 MM ̄ @ 14" c/c
l, m, n	= 10 MM ̄ @ 14" c/c
o	= 8 MM ̄ @ 14" c/c
p	= 8 MM ̄ @ 8" c/c
q	= 12 MM ̄ @ 5" c/c

NOTE :- SLAB 4 1/2" THICK THROUGHOUT UNLESS OTHERWISE SPECIFIED.

CHANDIGARH
HOUSING BOARD

TITLE :-
DETAILS OF SLAB & BEAMS
AT SECOND FLOOR LEVEL.

SCALE : 1/4" = 1'-0" CHECKED BY :-

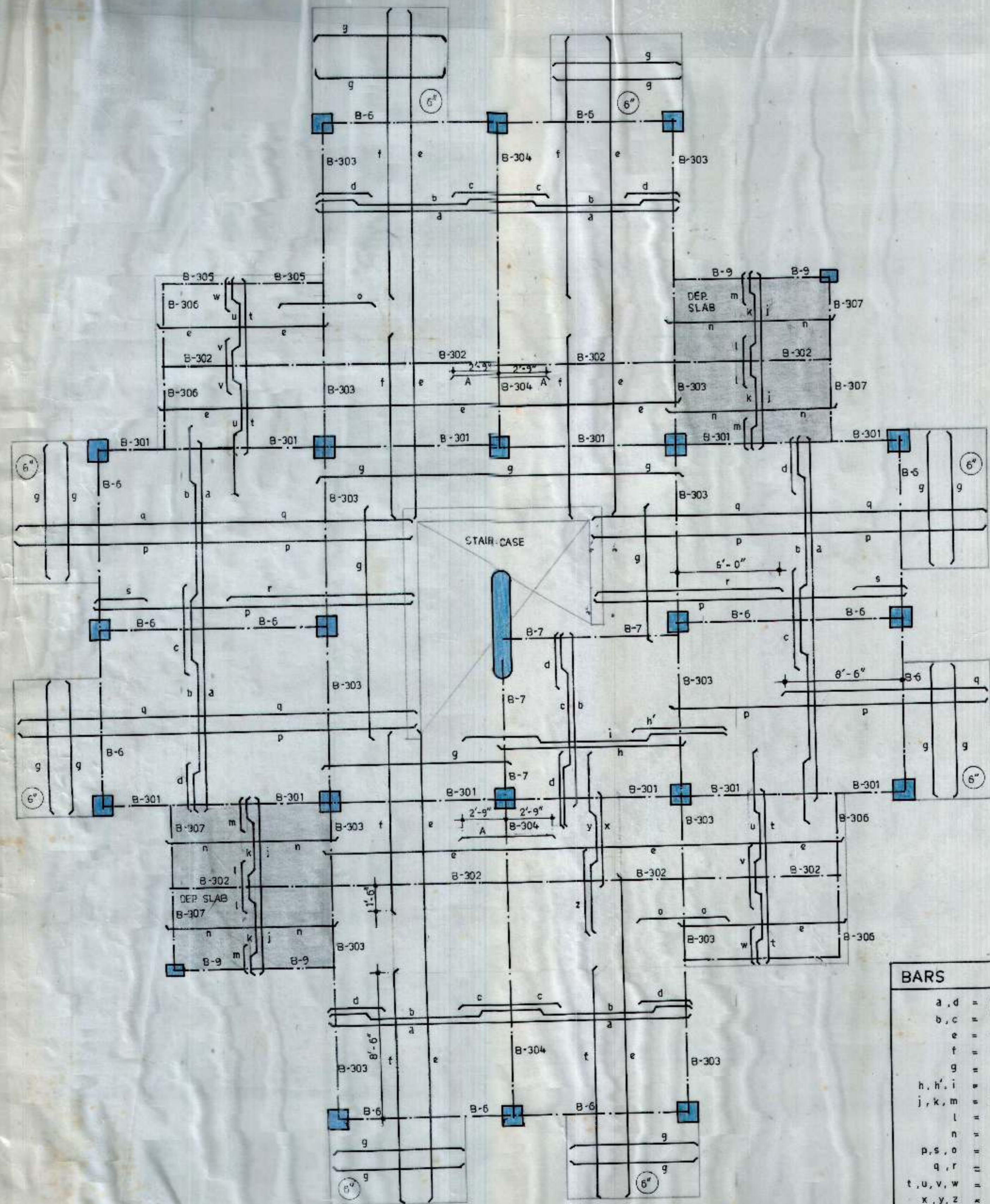
DEALT BY :- K.K. DATED :-

JOB NO. :- 3H ORG NO. :- 06

M.S.T. CONSULTANTS
S.C.F. 23, SECTOR - 16
CHANDIGARH

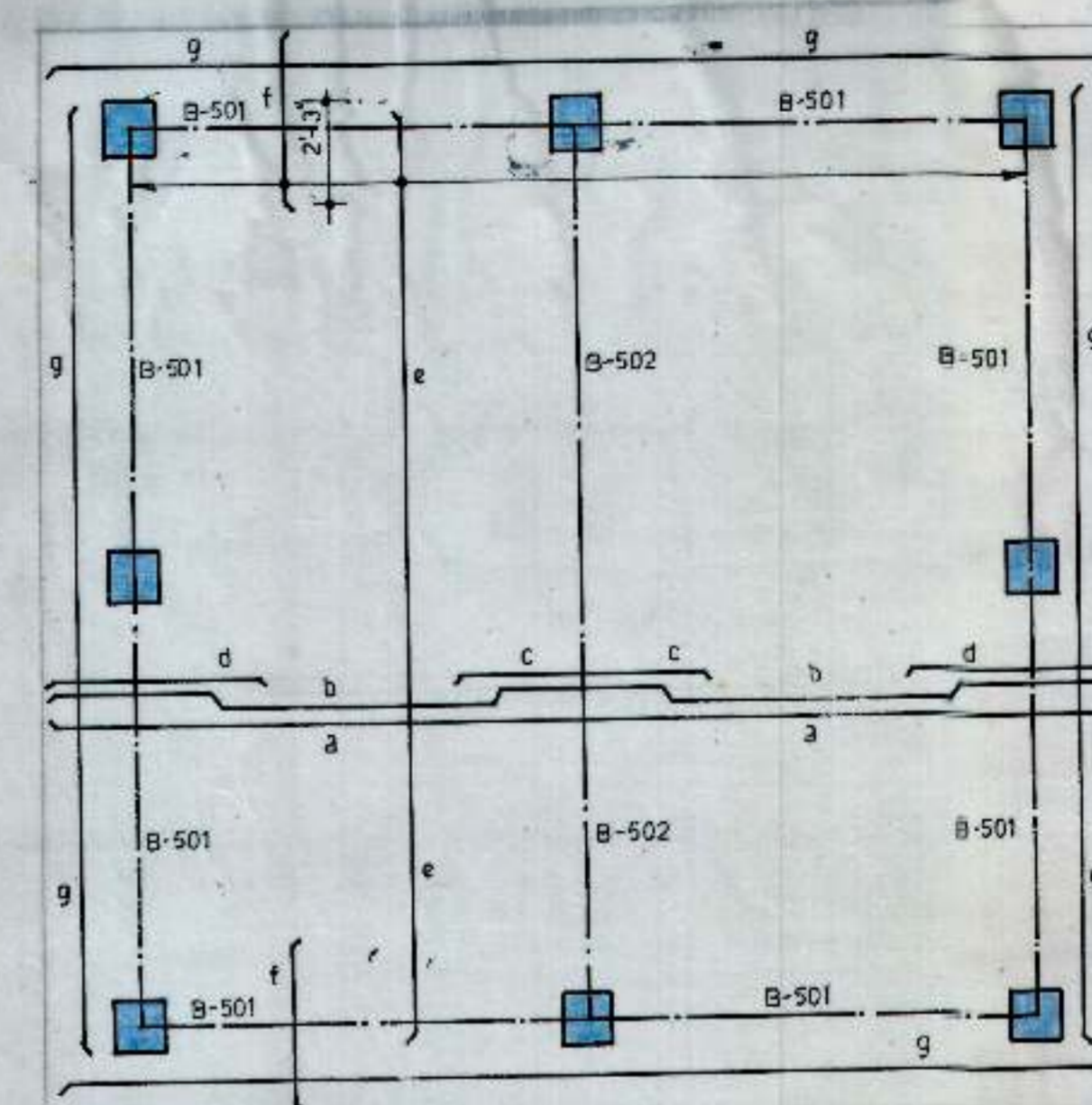
NOTES :

- FOR STRUCTURAL NOTES REFER DRG NO. 01, JOB NO. 3H.
- FOR DETAILS OF BEAM B-6, B-7 & B-9 REFER DRG NO. 05, JOB NO. 3H.



KEY PLAN

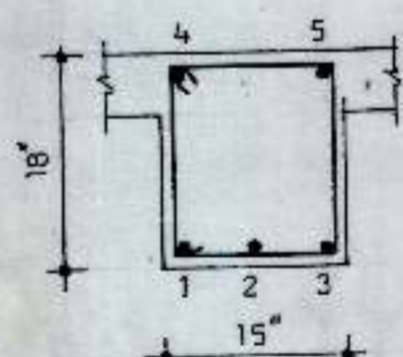
NOTE: SLAB 4 1/2" THICK THROUGHOUT UNLESS OTHERWISE SPECIFIED.



KEY PLAN

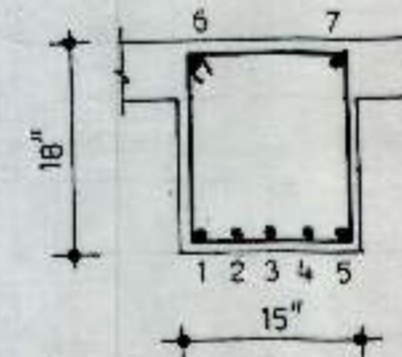
BARS IN SLAB	
a, b, c, d	= 10 MM ̄ @ 14" c/c
e	= 8 MM ̄ @ 9" c/c
f	= 10 MM ̄ @ 7" c/c

NOTE: SLAB 4 1/2" THICK THROUGHOUT.



BEAM B-501

BARS IN BEAM B-501	
1, 3, 4, 5	= 12 MM ̄
2	= 16 MM ̄
CRANK BAR 2 AT 2'-0" FROM SUPPORTS	
STPS: 8 MM ̄ 2 LEGGED 4 @ 9" c/c	
REST @ 12" c/c FROM SUPPORTS.	



BEAM B-502

BARS IN BEAM B-502	
1, 2, 4, 5	= 20 MM ̄
3, 6, 7	= 16 MM ̄
CRANK BARS 2, 4 AT 4'-3" FROM SUPPORTS	
STPS: 8 MM ̄ 2 LEGGED 6 @ 4" c/c + 4 @ 6" c/c + REST @ 12" c/c FROM SUPPORTS.	

BARS IN SLAB	
a, d	= 8 MM ̄ @ 15" c/c
b, c	= 10 MM ̄ @ 15" c/c
e	= 8 MM ̄ @ 10" c/c
f	= 12 MM ̄ @ 5" c/c
g	= 8 MM ̄ @ 9" c/c
h, h', i	= 8 MM ̄ @ 16" c/c
j, k, m	= 8 MM ̄ @ 16" c/c
l	= 10 MM ̄ @ 16" c/c
n	= 8 MM ̄ @ 9" c/c
p, s, o	= 8 MM ̄ @ 8" c/c
q, r	= 12 MM ̄ @ 5" c/c
t, u, v, w	= 8 MM ̄ @ 16" c/c
x, y, z	= 8 MM ̄ @ 16" c/c
A	= 10 MM ̄ @ 8" c/c

CHANDIGARH HOUSING BOARD

TITLE :
DETAILS OF SLAB & BEAMS
AT 4th FLOOR LEVEL &
MUMTY LEVEL.

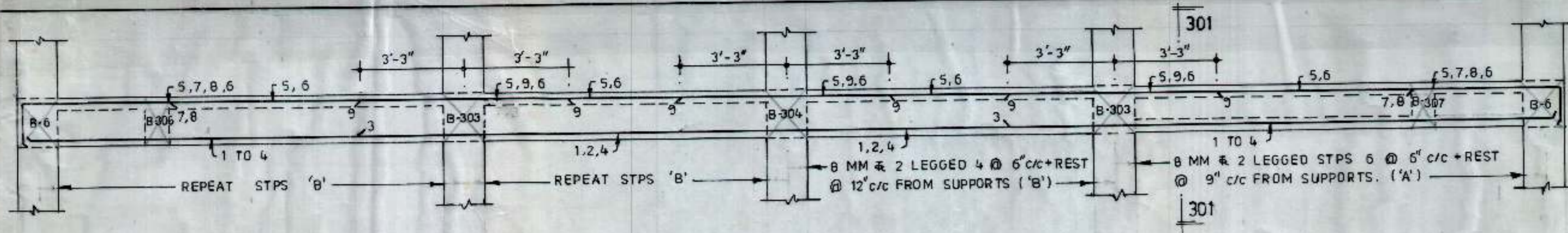
SCALE : 1/4" = 1'-0"
& 3/4" = 1'-0" CHECKED BY :

DEALT BY : K.K DATED : NOV., 1995

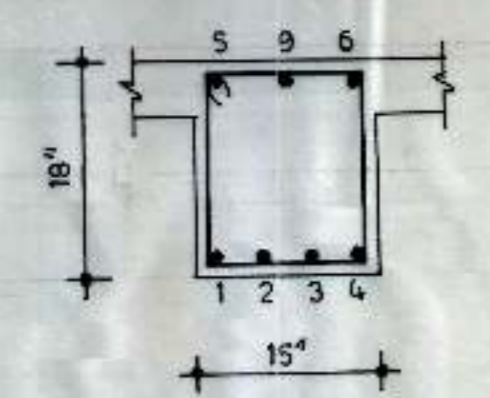
JOB NO. : 3H DRG NO. : 07

M.S.T. CONSULTANTS

S.C.F. 23, SECTOR - 16
CHANDIGARH

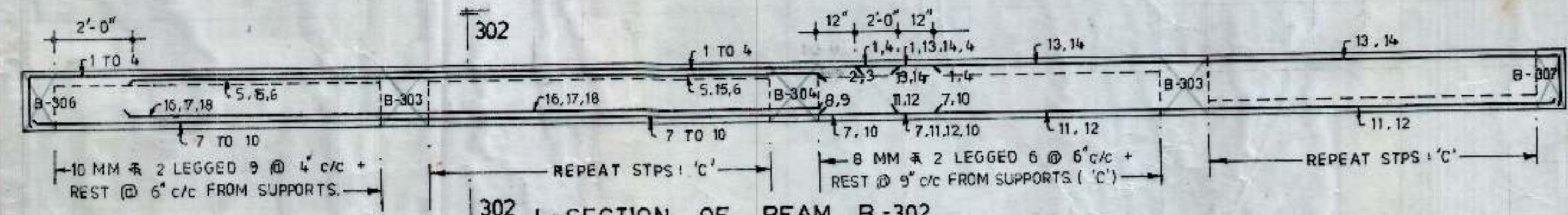


L-SECTION OF BEAM B-301

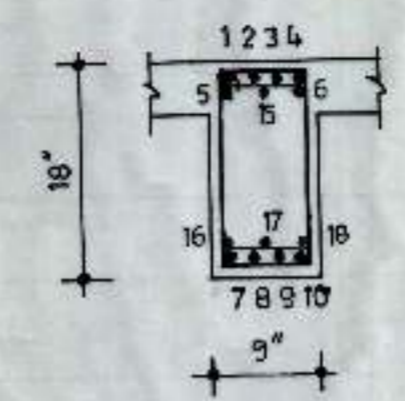


SECTION 301 - 301

BARS	IN	BEAM	B-301
1,3,4,5,6	=	16 MM	英
2,7,8,9	=	20 MM	英

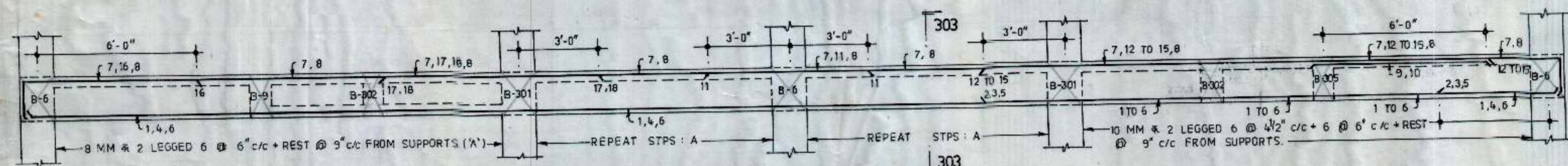


L-SECTION OF BEAM B-302

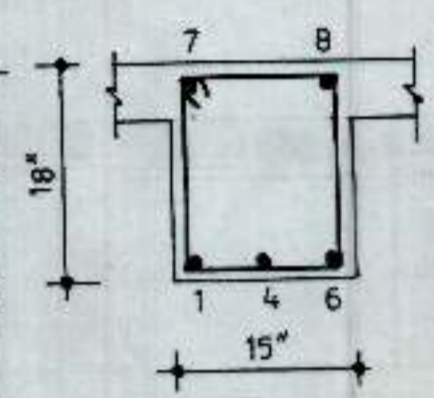


SECTION 302 - 302

BARS	IN	BEAM	B-302
1 TO 10	=	25 MM	英
11 TO 14	=	16 MM	英
15 TO 18	=	25 MM	英

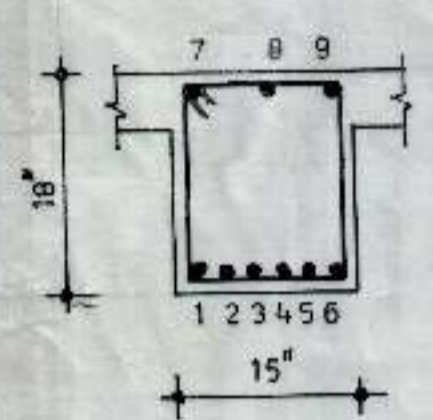


L-SECTION OF BEAM B-303



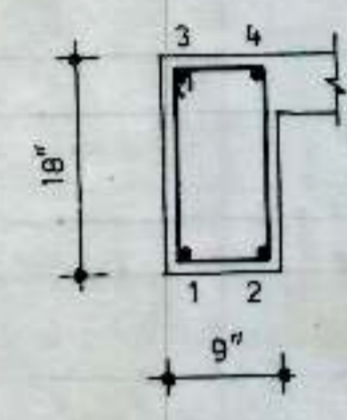
SECTION 303 - 303

BARS	IN	BEAM	B-303
11,1,2,4 TO 8,16 TO 18	=	20 MM	英
9,10,3,12 TO 15	=	25 MM	英



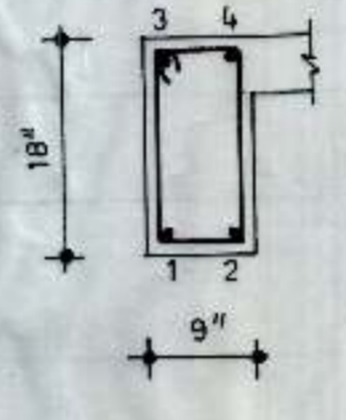
BEAM B-304

BARS	IN	BEAM	B-304
1 TO 9	=	20 MM	英
STPS: 10 MM 英 2 LEGGED 9 @ 4" c/c + 6 @ 6" c/c + REST @ 9" c/c FROM SUPPORTS.			



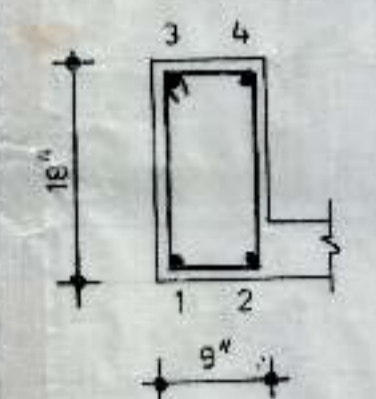
BEAM B-305

BARS	IN	BEAM	B-305
1,2	=	20 MM	英
3,4	=	12 MM	英
STPS: 8 MM 英 2 LEGGED 4 @ 6" c/c + REST @ 9" c/c FROM SUPPORTS.			



BEAM B-306

BARS	IN	BEAM	B-306
1 TO 4	=	20 MM	英
STPS: 8 MM 英 2 LEGGED @ 9" c/c.			



BEAM B-307

BARS	IN	BEAM	B-307
1 TO 4	=	20 MM	英
STPS: 8 MM 英 2 LEGGED @ 9" c/c.			

NOTES:
1. FOR STRUCTURAL NOTES REFER DRG NO. 01, JOB NO. 3H.

CHANDIGARH
HOUSING BOARD

TITLE:
DETAILS OF BEAM AT
4th FLOOR LEVEL

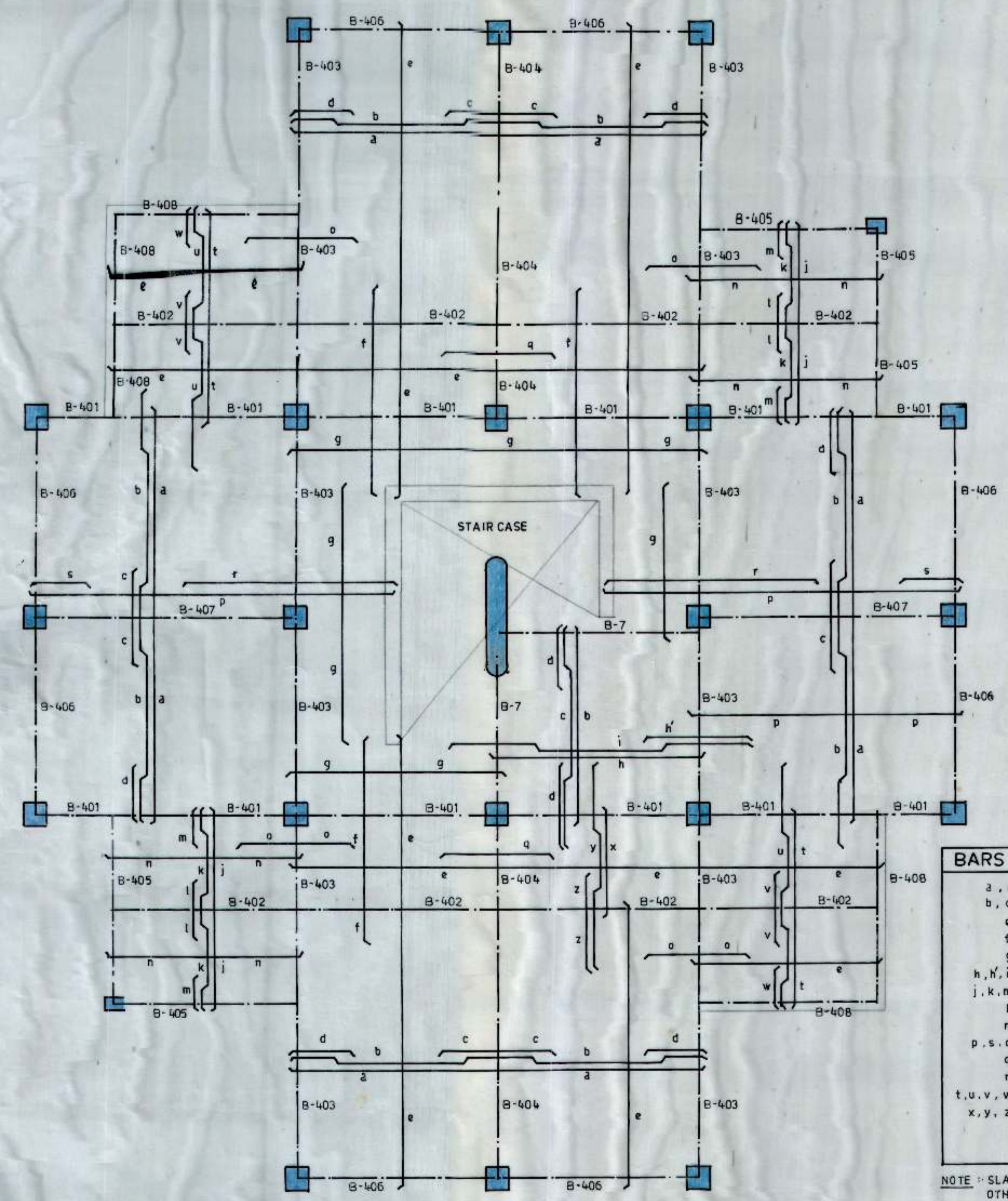
SCALE: 3/8" = 1'-0"	CHECKED BY:
8 3/4" = 1'-0"	
DEALT BY: K.K.	DATED: NOV, 1995
JOB NO: 3H	DRG NO: 08

M.S.T. CONSULTANTS

S.C.F. 23, SECTOR - 16
CHANDIGARH

BACHELOR HOSTEL
P.G.I., CHANDIGARH

NOTES :-
1. FOR STRUCTURAL NOTES REFER DRG. NO. 01, JOB NO. 3H.
2. FOR DETAIL OF BEAM B-7 REFER DRG. NO. 05, JOB NO. 3H.



KEY PLAN

BARS	IN	SLAB
a, d	= 8 MM	@ 15" c/c
b, c	= 10 MM	@ 15" c/c
e	= 8 MM	@ 10" c/c
f	= 12 MM	@ 5" c/c
g	= 8 MM	@ 9" c/c
h, h', i	= 8 MM	@ 16" c/c
j, k, m	= 8 MM	@ 16" c/c
l	= 10 MM	@ 16" c/c
n	= 8 MM	@ 9" c/c
p, s, o	= 8 MM	@ 8" c/c
q	= 10 MM	@ 8" c/c
r	= 12 MM	@ 5" c/c
t, u, v, w	= 8 MM	@ 16" c/c
x, y, z	= 8 MM	@ 16" c/c

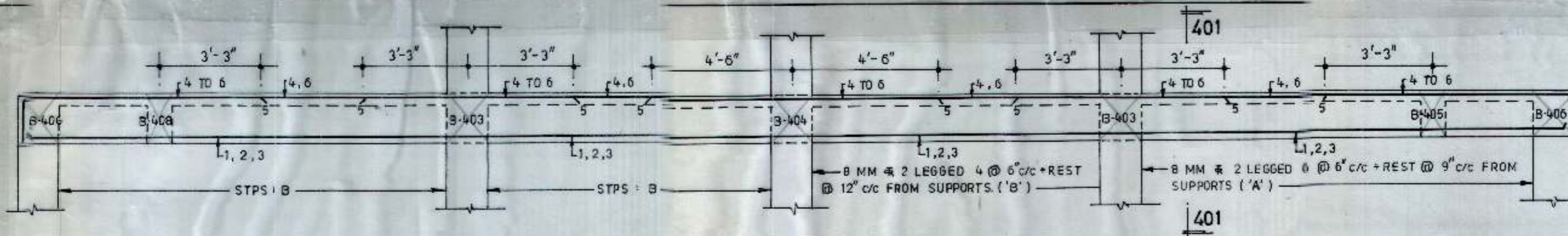
NOTE :- SLAB 4 1/2" THICK THROUGHOUT, UNLESS OTHERWISE SPECIFIED.

CHANDIGARH
HOUSING BOARD

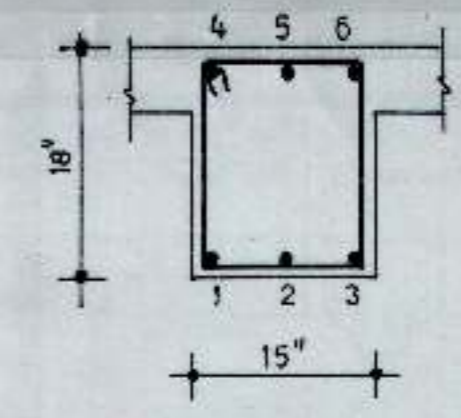
TITLE :-
DETAILS OF SLAB & BEAMS
AT TERRACE LEVEL.

SCALE :- 1/4" = 1'-0"	CHECKED BY :-
DEALT BY :- K.K.	DATED :- JAN, 1996
JOB NO. :- 3H	DRG NO. :- 09

M.S.T. CONSULTANTS
S.C.F. 23, SECTOR - 16
CHANDIGARH



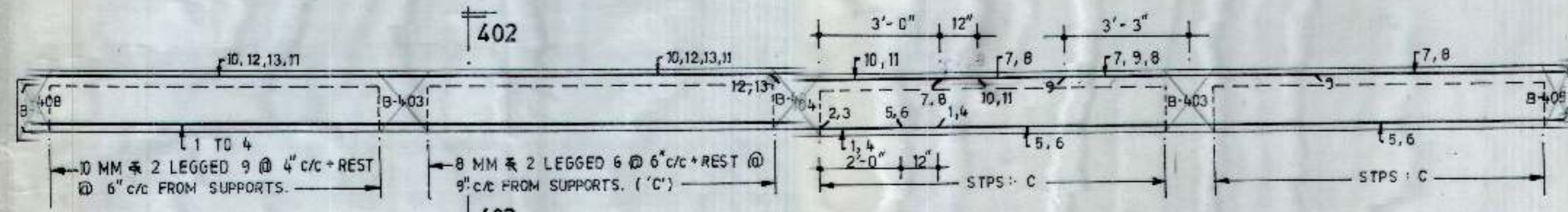
L-SECTION OF BEAM B-401



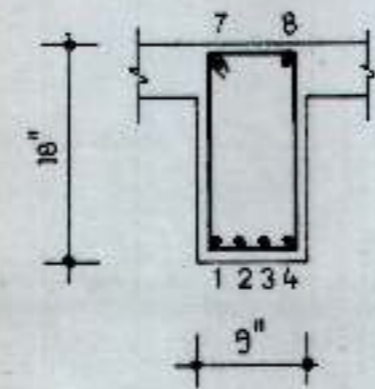
SECTION 401 - 401

BARS	IN	BEAM	B-401
1,3,4,5,6	=	16 MM	⌘
2,5	=	12 MM	⌘

NOTES :-
1. FOR STRUCTURAL NOTES REFER DRG NO. 01, JOB NO. BH.

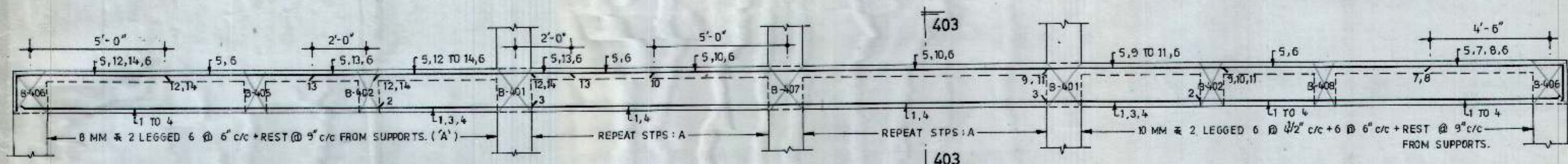


L-SECTION OF BEAM B-402

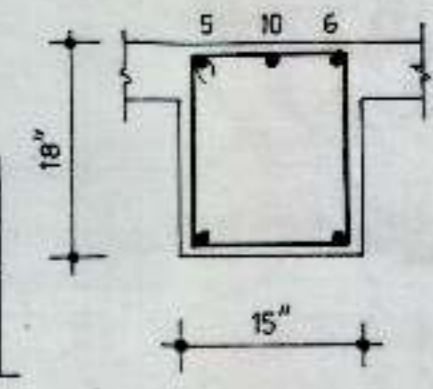


SECTION 402 - 402

BARS	IN	BEAM	B-402
10 TO 13, 1 TO 4	=	25 MM	⌘
5, 6, 9	=	16 MM	⌘
7, 8	=	12 MM	⌘

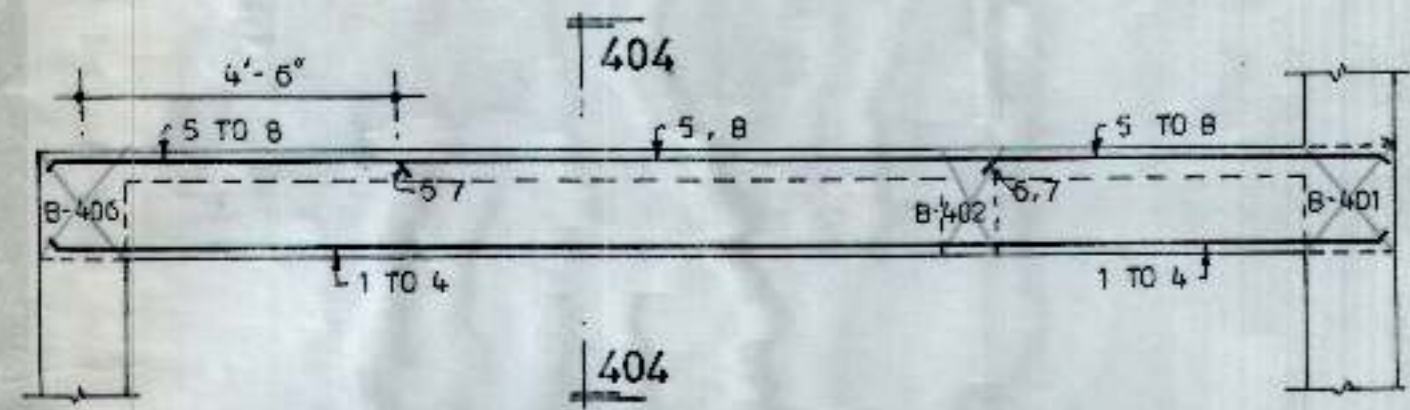


L-SECTION OF BEAM B-403

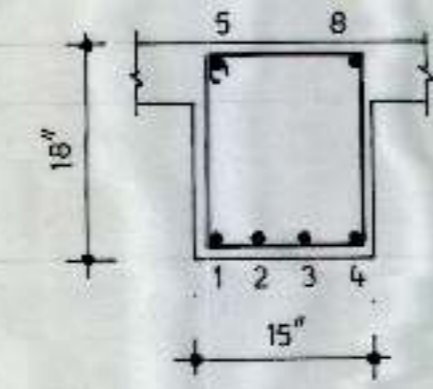


SECTION 403 - 403

BARS	IN	BEAM	B-403
2,3,5,6,10,12,14	=	16 MM	⌘
1,4,7,8,9,11,13	=	20 MM	⌘



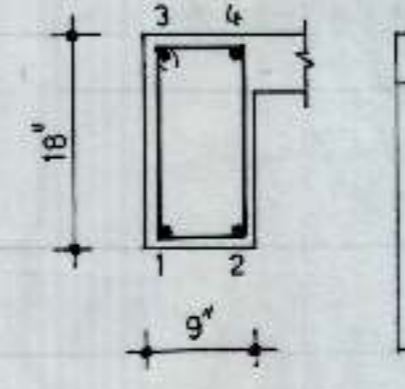
L-SECTION OF BEAM B-404



SECTION 404 - 404

BARS	IN	BEAM	B-404
1 TO 8	=	16 MM	⌘

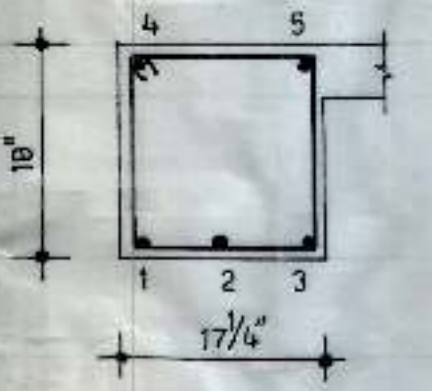
STPS: 10 MM bars 2 LEGGED 9 @ 4" c/c + 6 @ 6" c/c + REST @ 9" c/c FROM SUPPORTS.



SECTION 405 - 405

BARS	IN	BEAM	B-405
1 TO 4	=	12 MM	⌘

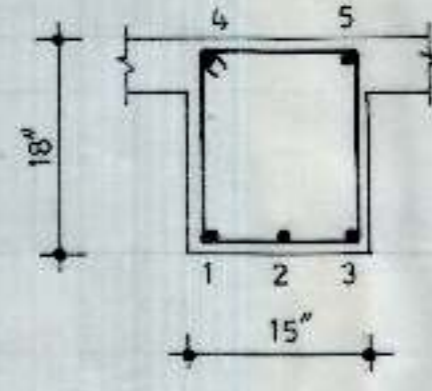
STPS: 8 MM bars 2 LEGGED @ 9" c/c.



SECTION 406 - 406

BARS	IN	BEAM	B-406
1 TO 3	=	16 MM	⌘
4, 5	=	12 MM	⌘

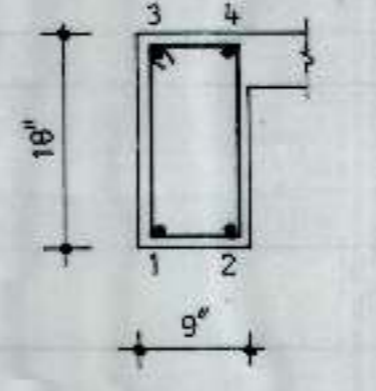
CRANK BAR 2 AT 2'-3" FROM SUPPORTS
STPS: 8 MM bars 2 LEGGED 4 @ 6" c/c + REST @ 9" c/c FROM SUPPORTS.



SECTION 407 - 407

BARS	IN	BEAM	B-407
1 TO 3	=	16 MM	⌘
4, 5	=	12 MM	⌘

CRANK BAR 2 AT 2'-3" FROM SUPPTS
STPS: 8 MM bars 2 LEGGED 4 @ 6" c/c + REST @ 9" c/c FROM SUPPORTS.



SECTION 408 - 408

BARS	IN	BEAM	B-408
1 TO 4	=	20 MM	⌘

STPS: 8 MM bars 2 LEGGED @ 9" c/c.

TITLE :-
DETAILS OF BEAM AT TERRACE LEVEL.

SCALE :- 3/8" = 1'-0"	CHECKED BY :-
8 3/4" = 1'-0"	
DEALT BY :- K.K.	DATED :- JAN, 1996
JOB NO. :- 3H	DRG NO. 10