

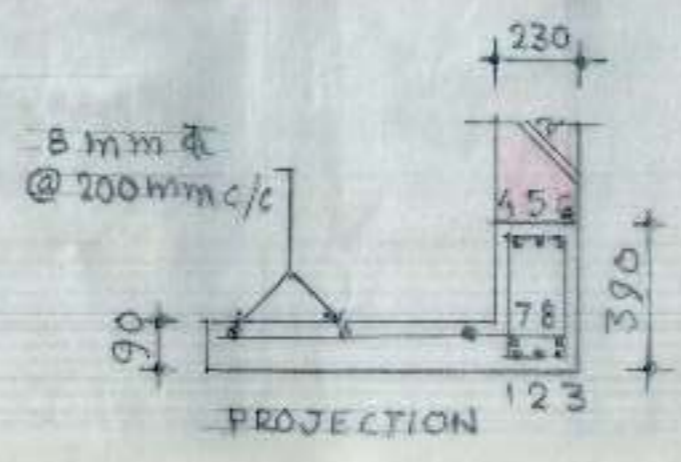
CHANDIGARH HOUSING BOARD

NOTES :-

1. USE M-20 CONC. (OR 1:1.5:3 NOMINAL MIX)
2. USE TOR STEEL CONFORMING TO IS 1786-1986 OF GRADE Fe 415.
3. P.C.C. SHALL BE MACHINE MIXED.
4. FOR DETAIL DIMENSIONS REF. ARCH. DRGS.
5. DIMENSIONS TO BE READ AND NOT TO BE SCALED OUT.
6. NET SAFE BEARING OF 10 T/M² HAS BEEN TAKEN FOR DESIGN OF FOUNDATION WHICH SHOULD BE ENSURED AT SITE.
7. FOR LAYING OF RCC & PLACING OF REINF. ALL CODAL PROVISIONS LAID IN IS 456-2000 SHOULD BE STRICTLY FOLLOWED.
8. DISCREPANCIES BETWEEN DETAILS SHOWN IN THIS DRG. & ARCH. DRGS. IF ANY BE GOT CLARIFIED FROM THIS OFFICE BEFORE EXECUTION OF WORK.
9. CEMENT MORTAR TO BE USED FOR BRICK WALLS SHALL BE AS SPECIFIED IN DRGS.
10. ALL FOUNDATIONS SHOULD REST AT A DEPTH SUGGESTED W.R.T. THE N.G.L. EXCLUDING THE LOOSE FILLS.
11. ALL DIMENSIONS IN MM EXCEPT WHERE MENTIONED.

R/F IN PLINTH BEAM PB-1
1 TO 6 = 12 mm $\bar{\sigma}$
STPS. - 8 mm $\bar{\sigma}$ 2 LEGG.
VERT. STPS. @ 150 mm c/c
TH. OUT.

R/F IN PLINTH BEAM PB-2
1 TO 8 = 12 mm $\bar{\sigma}$
STPS. - 8 mm $\bar{\sigma}$ 2 LEGG.
VERT. STPS. @ 150 mm c/c
TH. OUT.

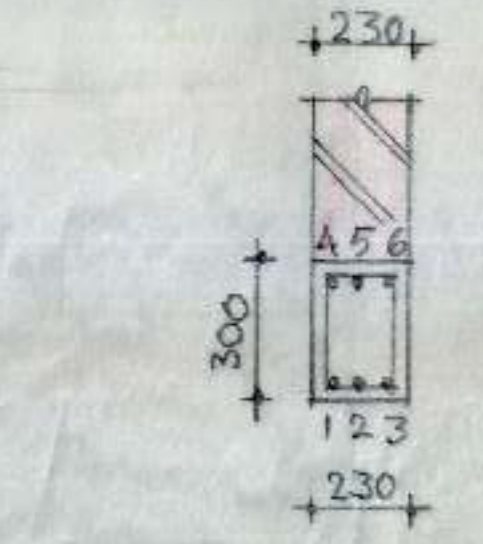
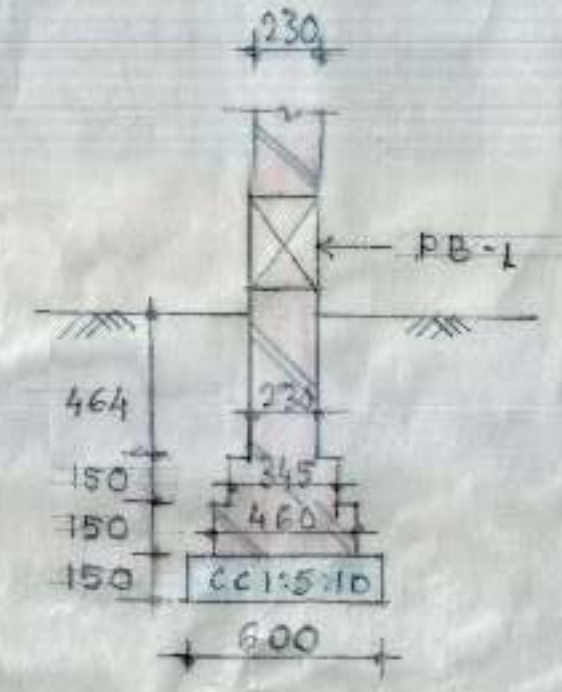


X-SECTION OF BEAM B-1
R/F IN BEAM B-1
1 TO 6 = 16 mm $\bar{\sigma}$
7, 8 = 12 mm $\bar{\sigma}$
STPS. - 8 mm $\bar{\sigma}$ 2 LEGG.
VERT. STPS. @ 6" c/c TH. OUT.

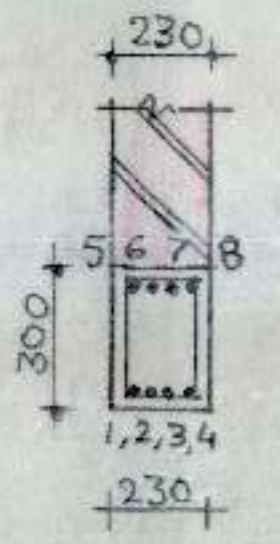
X-SECTION OF BEAM B-2
R/F IN BEAM B-2
1 TO 10 = 16 mm $\bar{\sigma}$
STPS. - 8 mm $\bar{\sigma}$ 2 LEGG.
VERT. STPS. 8 NOS. @ 100 c/c
+ REST @ 200 c/c

X-SECTION OF BEAM B-3
R/F IN BEAM B-3
1 TO 4 = 16 mm $\bar{\sigma}$
7 TO 8 = 12 mm $\bar{\sigma}$
STPS. - 8 mm $\bar{\sigma}$ 2 LEGG.
VERT. STPS. 8 NOS. @ 100 mm c/c
+ REST @ 200 mm c/c

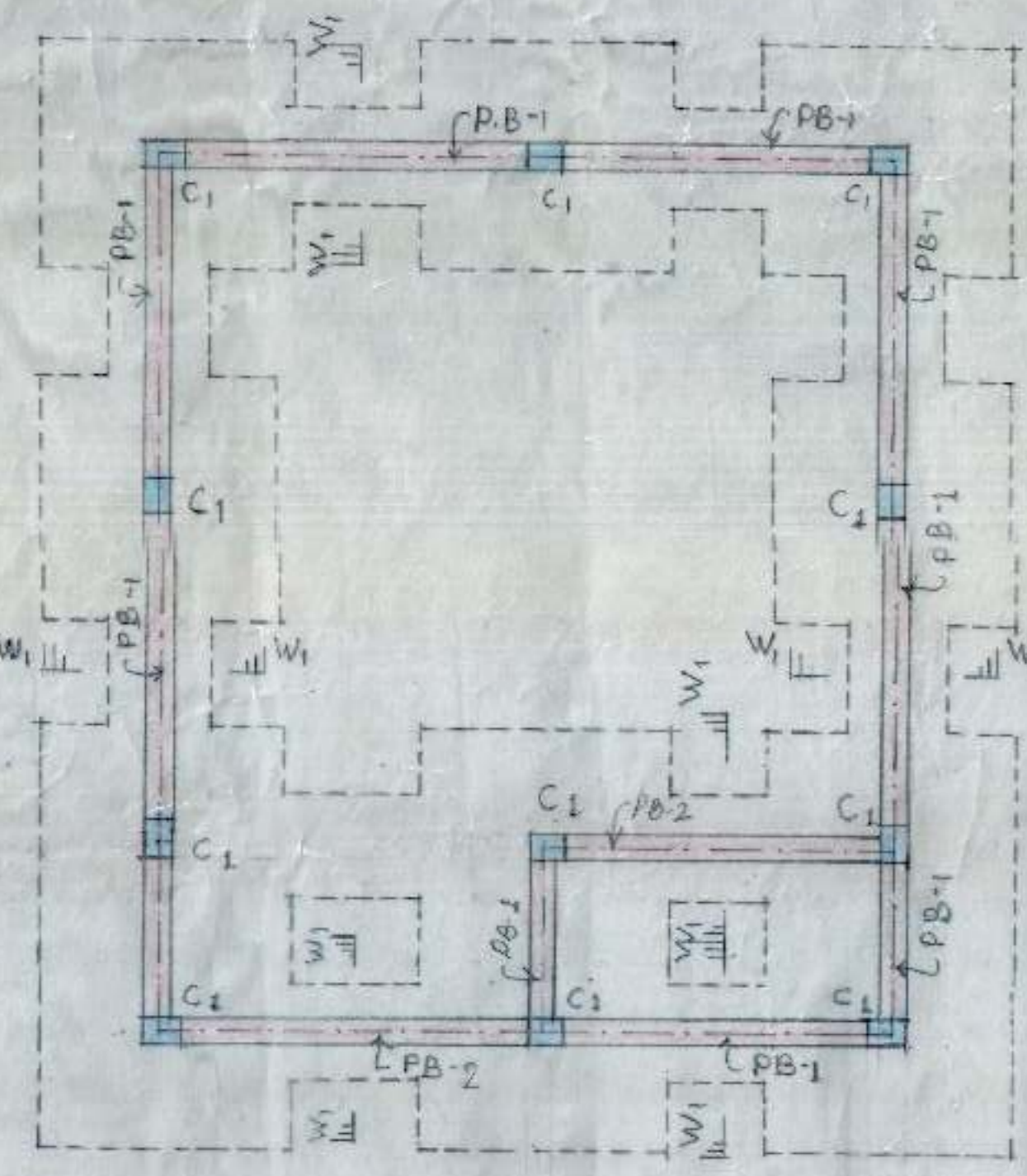
X-SECTION OF BEAM B-4
R/F IN BEAM B-4
1 TO 6 = 16 mm $\bar{\sigma}$
STPS. - 8 mm $\bar{\sigma}$ 2 LEGG.
VERT. STPS. 8 NOS. @ 100 c/c
+ REST @ 200 mm c/c



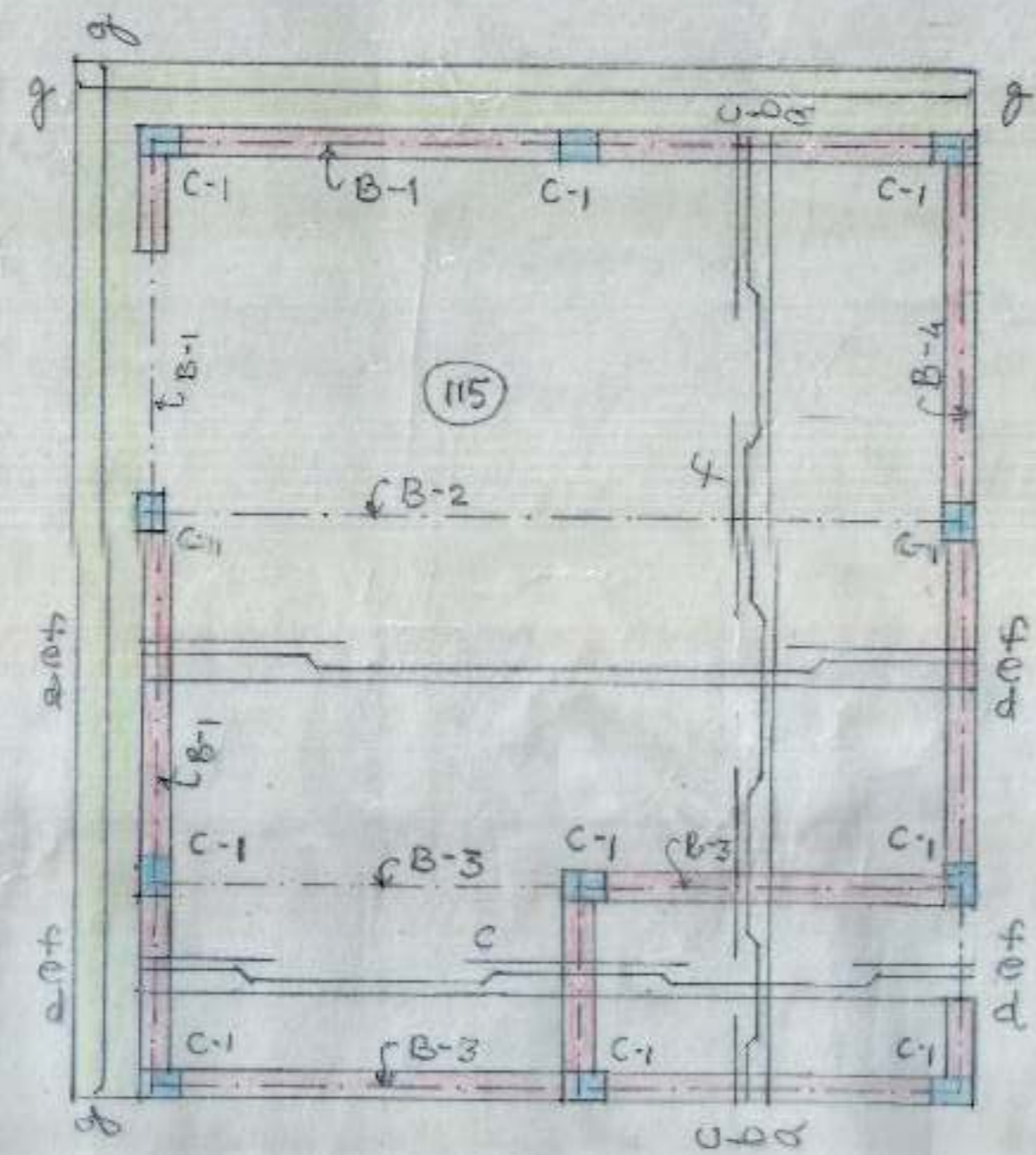
X-SECTION OF PB-1 (230x300)



X-SECTION OF PB-2 (230x300)

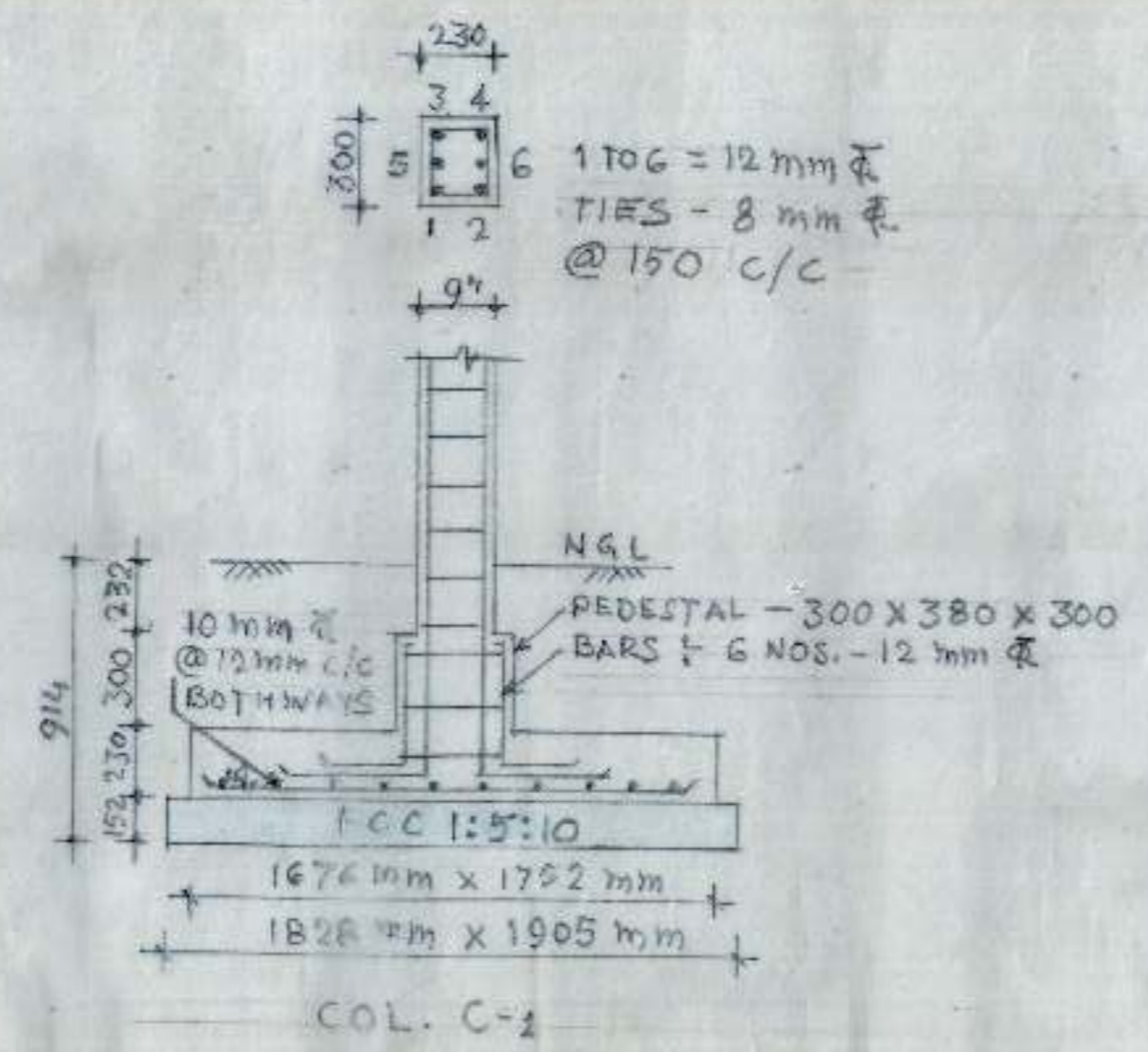


KEY PLAN OF PUMP HOUSE & TOILET

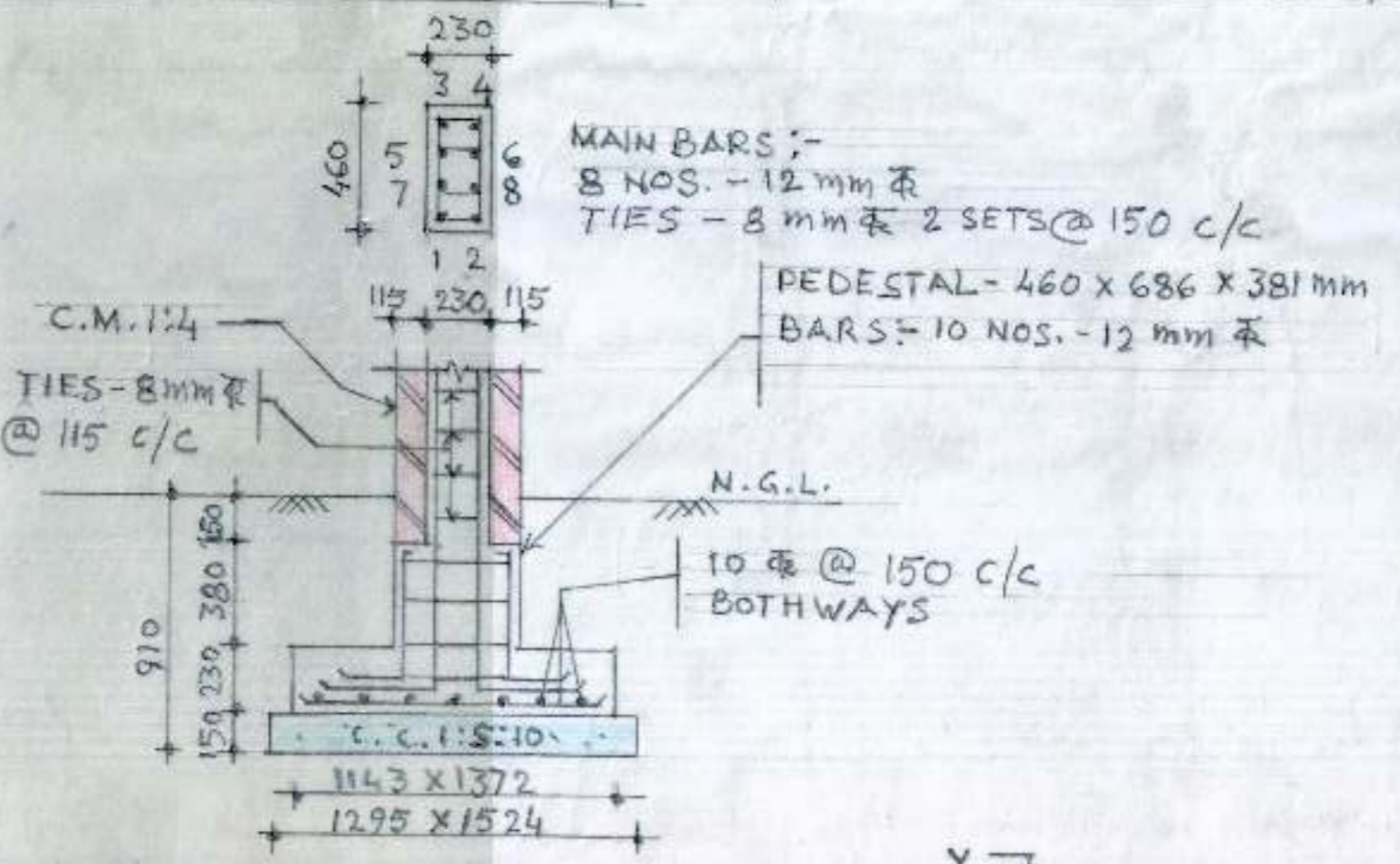


R/F IN ROOF SLAB OF PUMP HOUSE AND TOILET

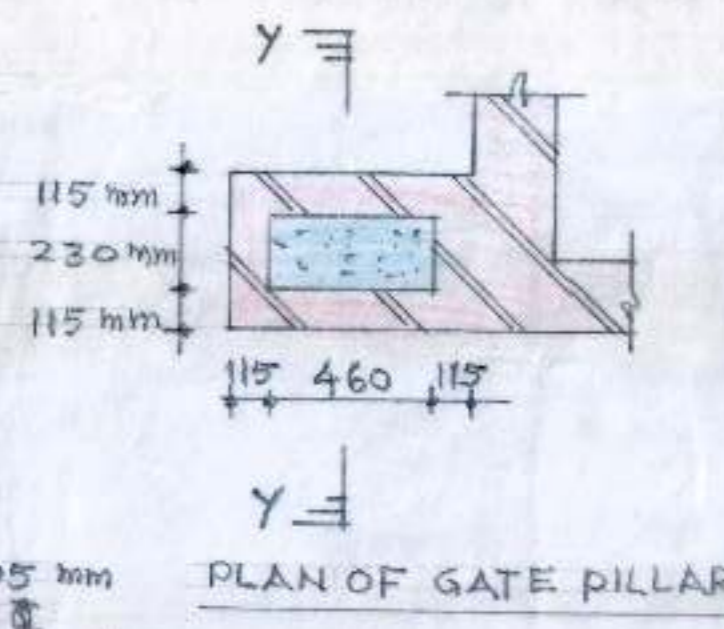
R/F IN R.C.C. SLAB 115 mm TH.
a b c = 10 mm $\bar{\sigma}$ @ 150 c/c
d e f = 10 mm $\bar{\sigma}$ @ 200 c/c
g = 8 mm $\bar{\sigma}$ @ 200 c/c



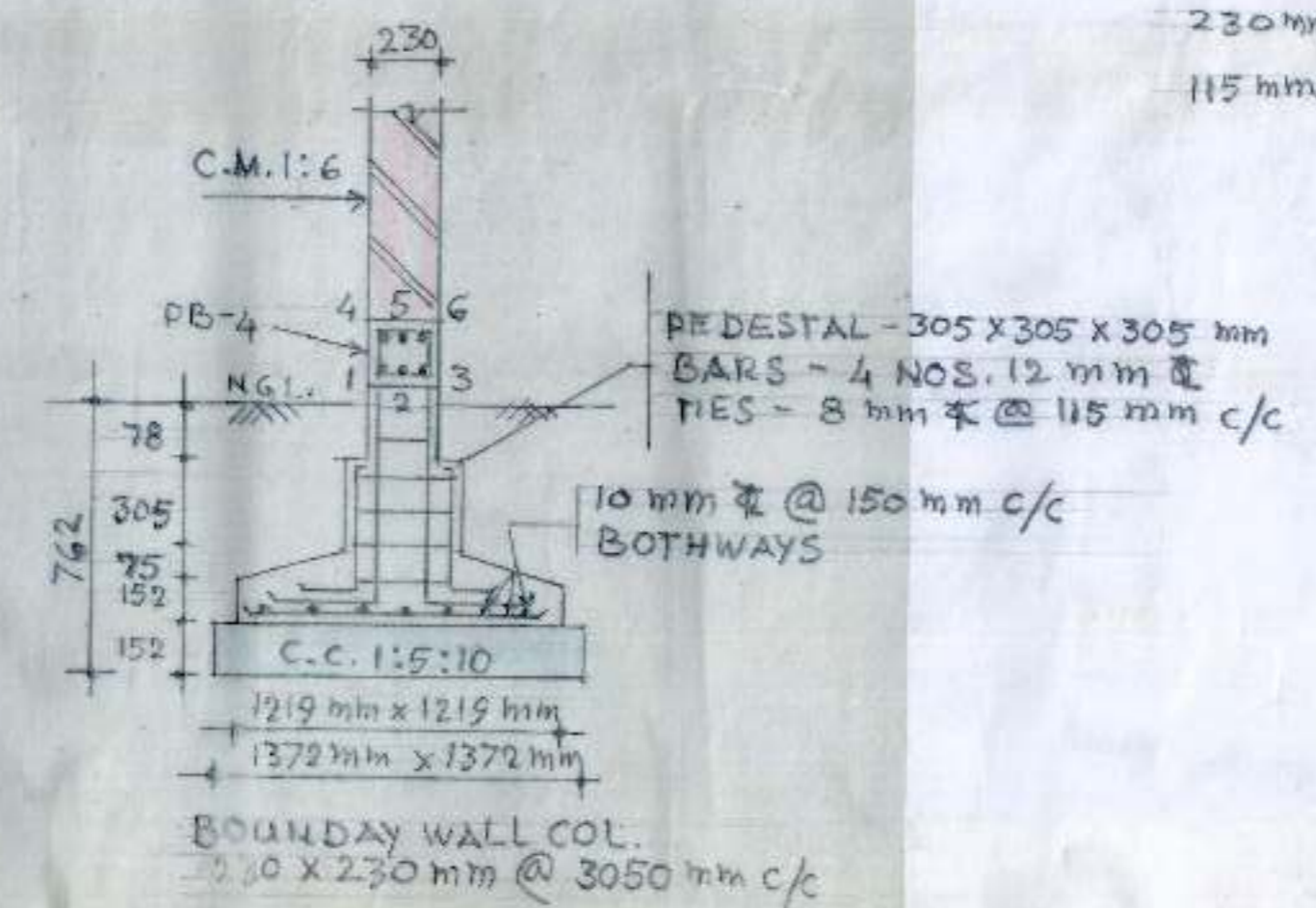
COL. C-1



COL. SECTION AT Y-Y GATE PILLAR



PLAN OF GATE PILLAR



BOUNDARY WALL COL. 230 x 230 mm @ 3050 mm c/c

DRAWN BY AE (R.C.)
DATE EE-I

FOUNDATION DETAIL OF COL.-1, BOUNDARY WALL COL. & GATE PILLARS. DETAIL OF PLINTH BEAM & BEAMS. DETAIL OF ROOF SLAB

DETAIL OF PUMP & SUMP IN SECTOR 49 C & D, CHANDIGARH.

DRG. No. 01 JOB NO. 137-R (REVISED) DATE JULY 2009