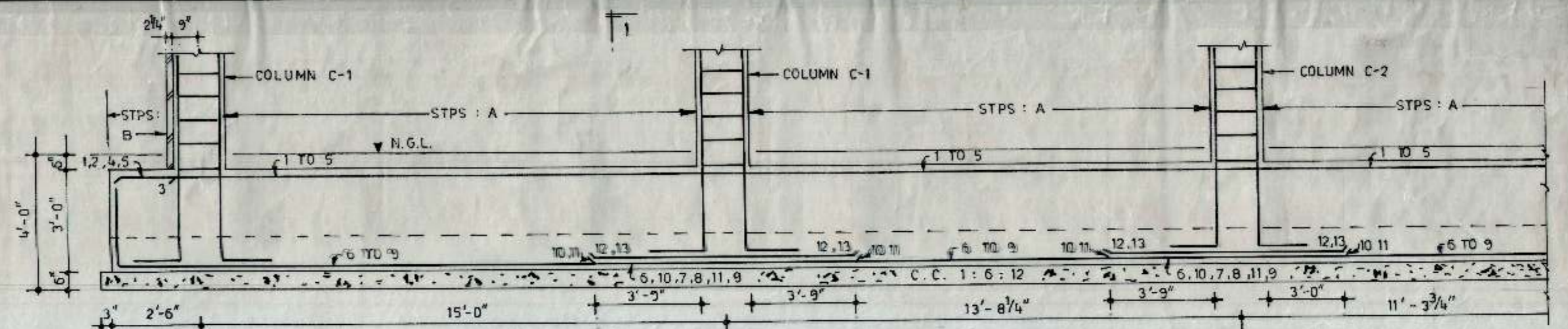
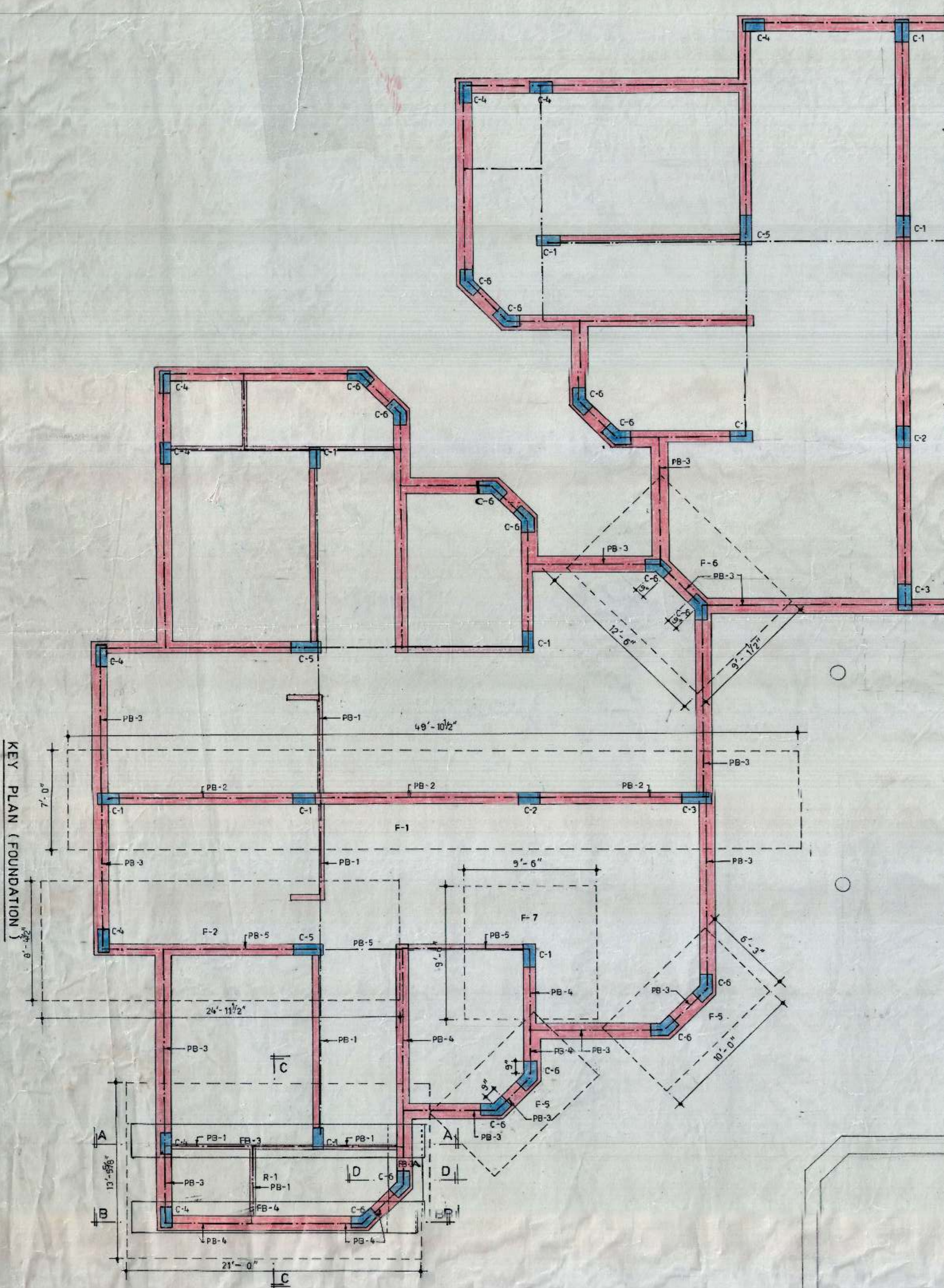


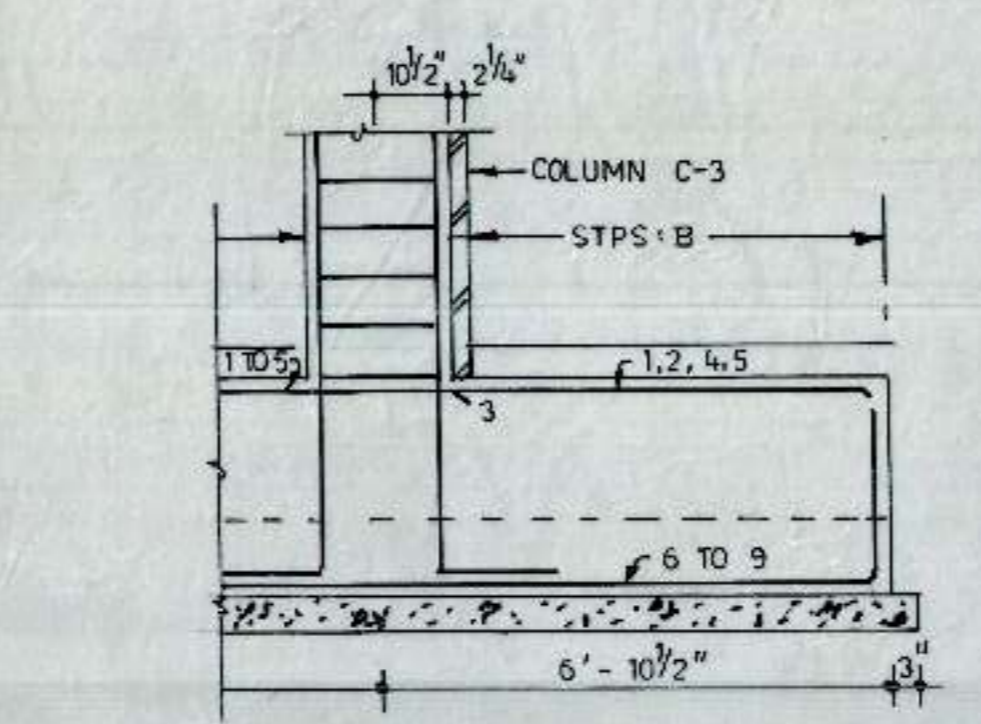
GATEWAY

GATEWAY

GATEWAY

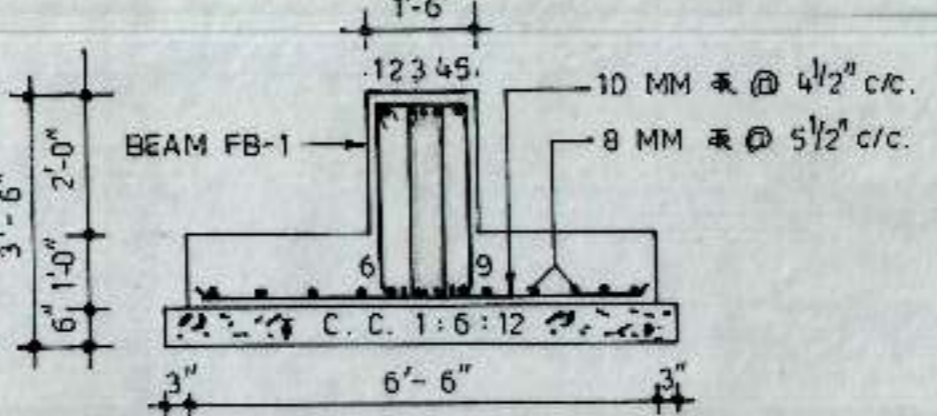


FOOTING F-1

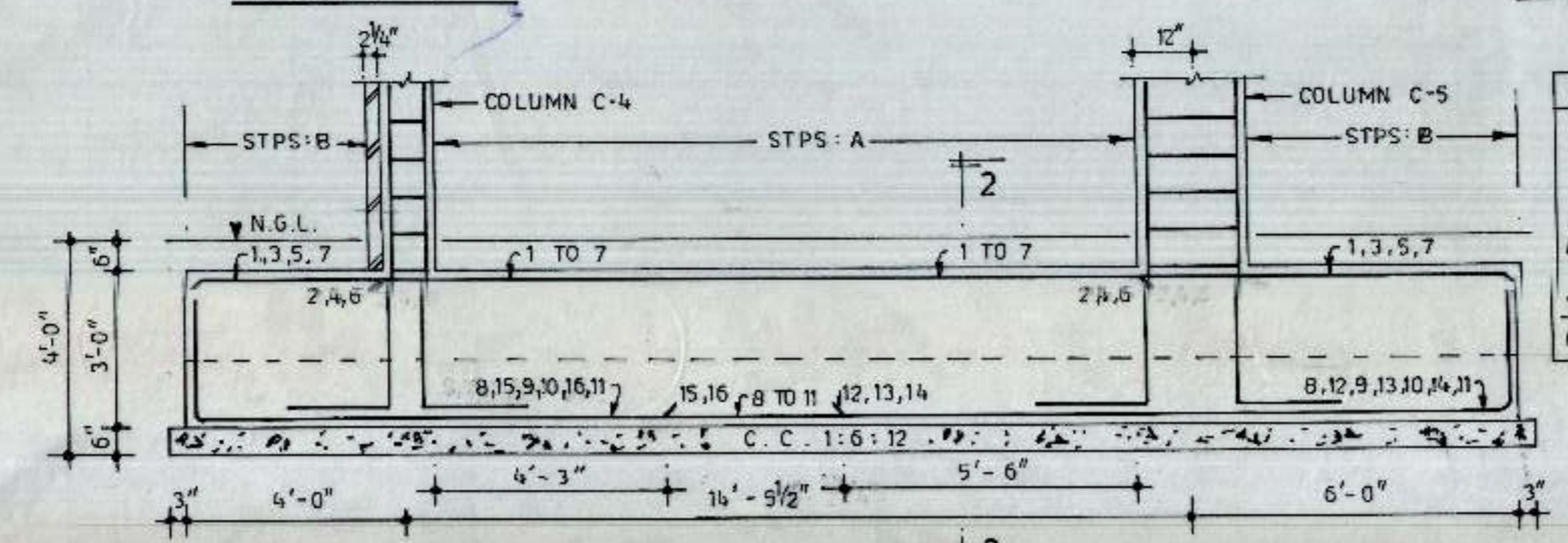


FOOTING F-1

BARS IN FOOTING BEAM FB-1
 10 TO 13, 1 TO 5 = 25 MM Φ
 6 TO 9 = 16 MM Φ
 STPS 'A': 10 MM Φ 4 LEGGED 6 @ 4 1/2" c/c +
 6 @ 6" c/c + REST @ 9" c/c FROM SUPPORTS.
 STPS 'B': 10 MM Φ 4 LEGGED @ 6" c/c.

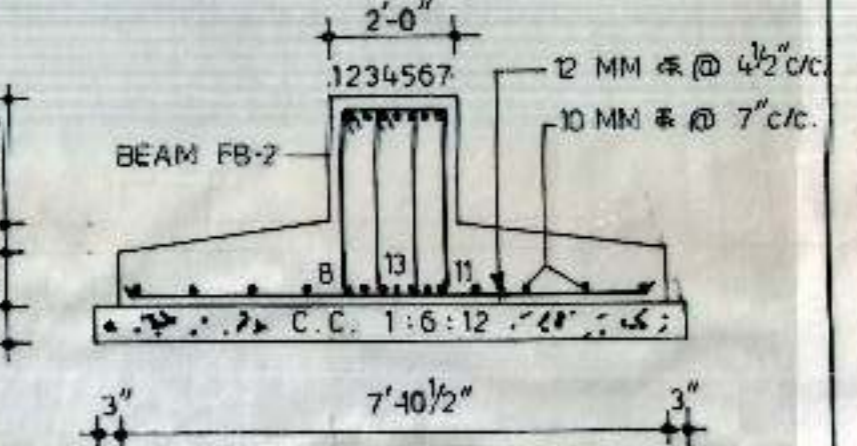


SECTION 1-1

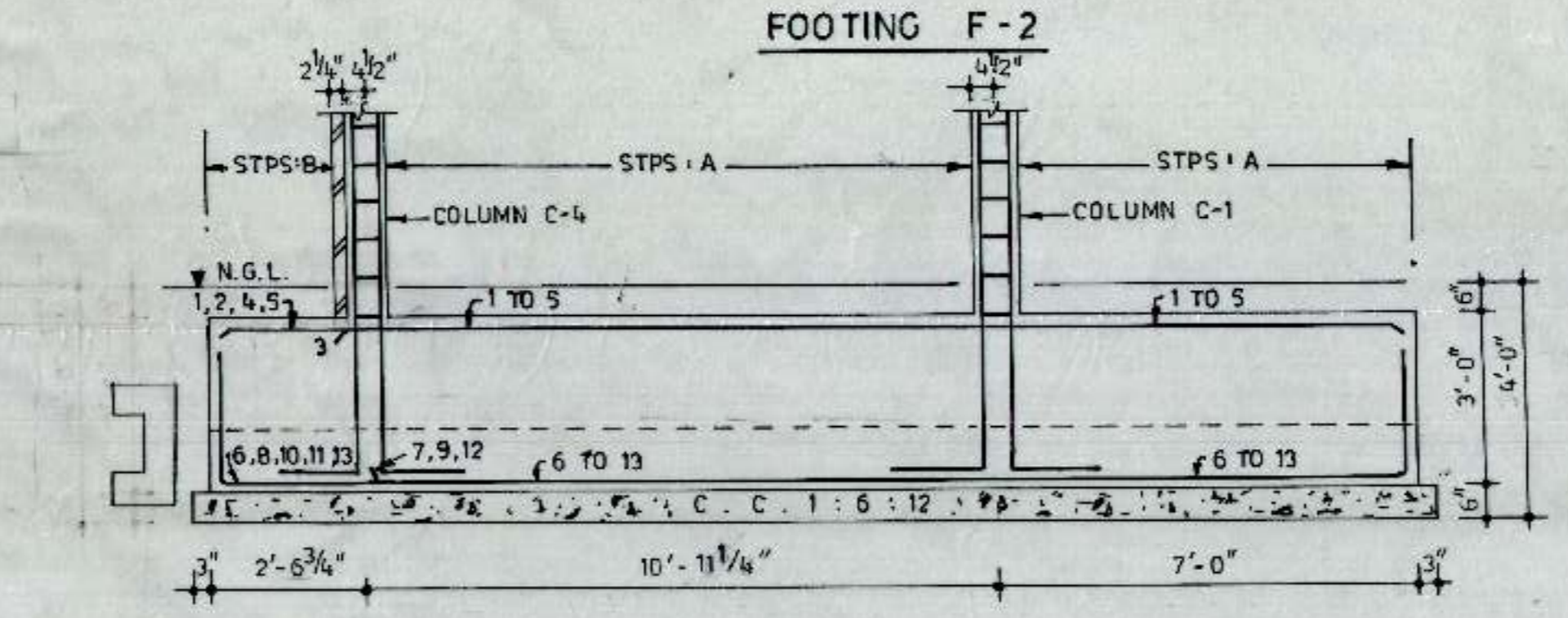


FOOTING F-2

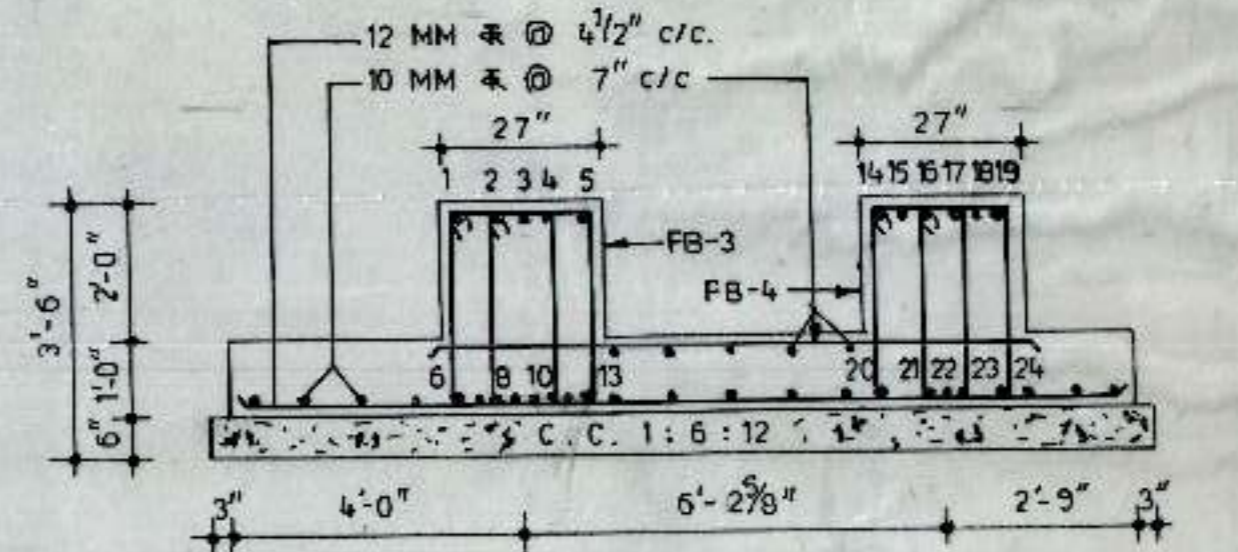
BARS IN FOOTING BEAM FB-2
 1,3,5,7,12 TO 15 = 20 MM Φ
 2,4,6 = 25 MM Φ
 8 TO 11 = 16 MM Φ
 STPS 'A': 10 MM Φ 4 LEGGED 6 @ 6" c/c + REST @ 12" c/c FROM SUPPORTS.
 STPS 'B': 10 MM Φ 2 LEGGED @ 6" c/c.



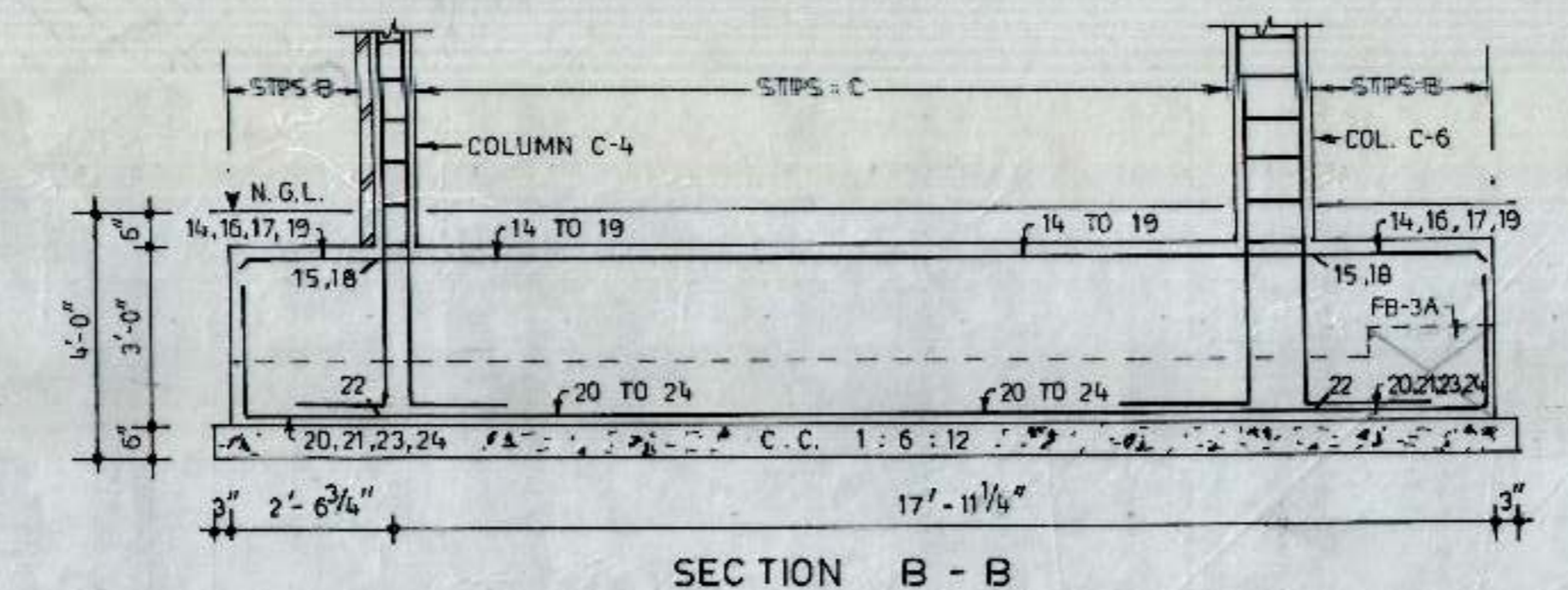
SECTION 2-2



SECTION A - A

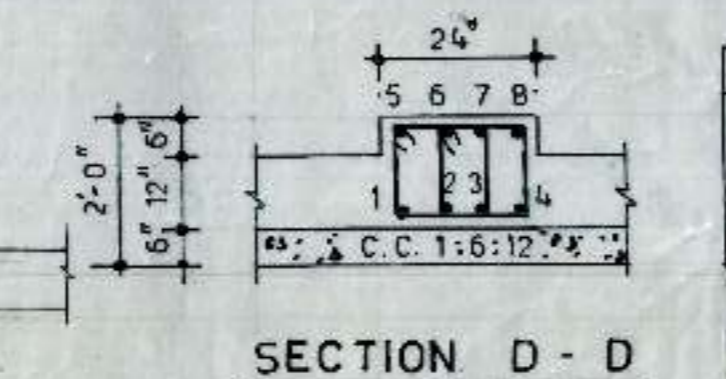


SECTION C - C



SECTION B - B

BARS IN FOOTING BEAM FB-3 & FB-4
 1 TO 6, 8 TO 11, 13, 14 TO 24 = 20 MM Φ
 7, 12 = 25 MM Φ
 STPS 'A': 10 MM Φ 4 LEGGED 6 @ 4 1/2" c/c + REST @ 6" c/c FROM SUPPORTS.
 STPS 'B': 8 MM Φ 4 LEGGED @ 9" c/c.
 STPS 'C': 8 MM Φ 4 LEGGED 4 @ 5" c/c + 3 @ 9" c/c + REST @ 12" c/c FROM SUPPORTS.



SECTION D - D

BARS IN FOOTING BEAM FB-3A
 1 TO 8 = 16 MM Φ
 STPS 'B': 8 MM Φ 4 LEGGED @ 9" c/c.

CLUSTER TYPE FOUR STOREYED
 HOUSE TYPE IV FOR P.G.I.
 SECTOR 12 - A
 CHANDIGARH

- NOTES:
1. THE NET ALLOWABLE BEARING PRESSURE HAS BEEN ASSUMED AS 10 TON/FT² AT FOUNDATION LEVEL.
 2. USE M-20 CONCRETE FOR COLUMNS AND M-15 FOR ALL OTHER R.C.C. WORKS.
 3. USE TOR STEEL FE-415.
 4. PROVIDE 2" CLEAR COVER TO REINFORCEMENT IN FOOTINGS.
 5. COLUMN TIES SHALL BE PROVIDED AT HALF THE NORMAL SPACING FOR A DISTANCE FOR 1/4 TH OF A STOREY HEIGHT OR 25", WHICHEVER IS GREATER, ABOVE & BELOW THE COLUMN BEAM JUNCTION.

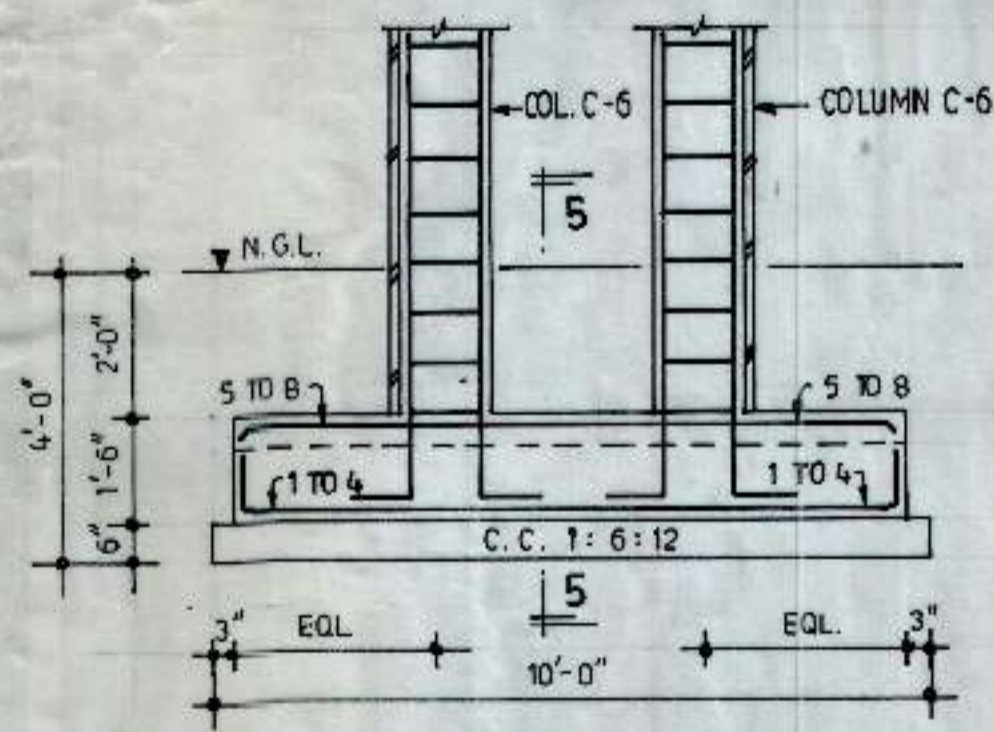
M.Singh

CHANDIGARH
 HOUSING BOARD

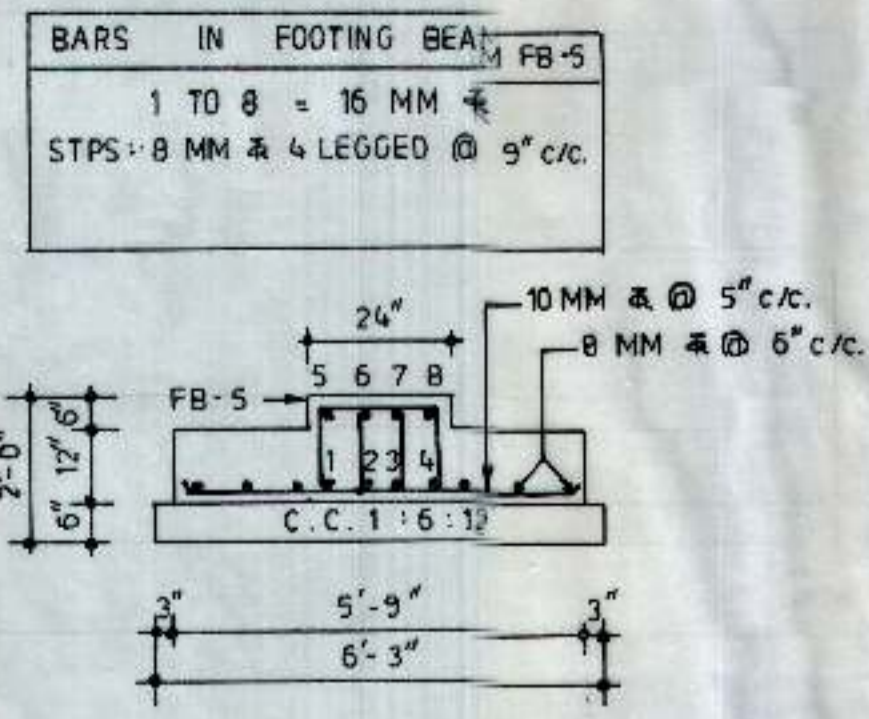
TITLE:
 DETAILS OF FOUNDATION

SCALE: 3/8" = 1'-0"	DEALT BY: K.K.
DATED: NOV, 1995	CHECKED BY: "
JOB NO.: FS	DRG NO.: 01

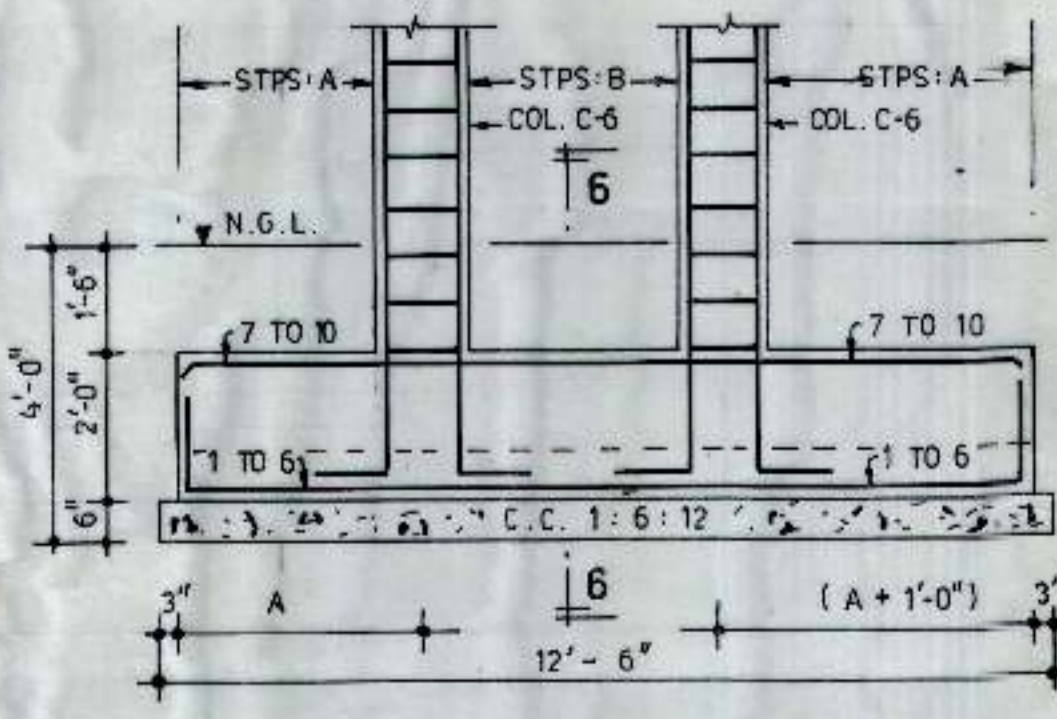
M.S.T. CONSULTANTS
 S.C.F. 23, SECTOR - 10
 CHANDIGARH



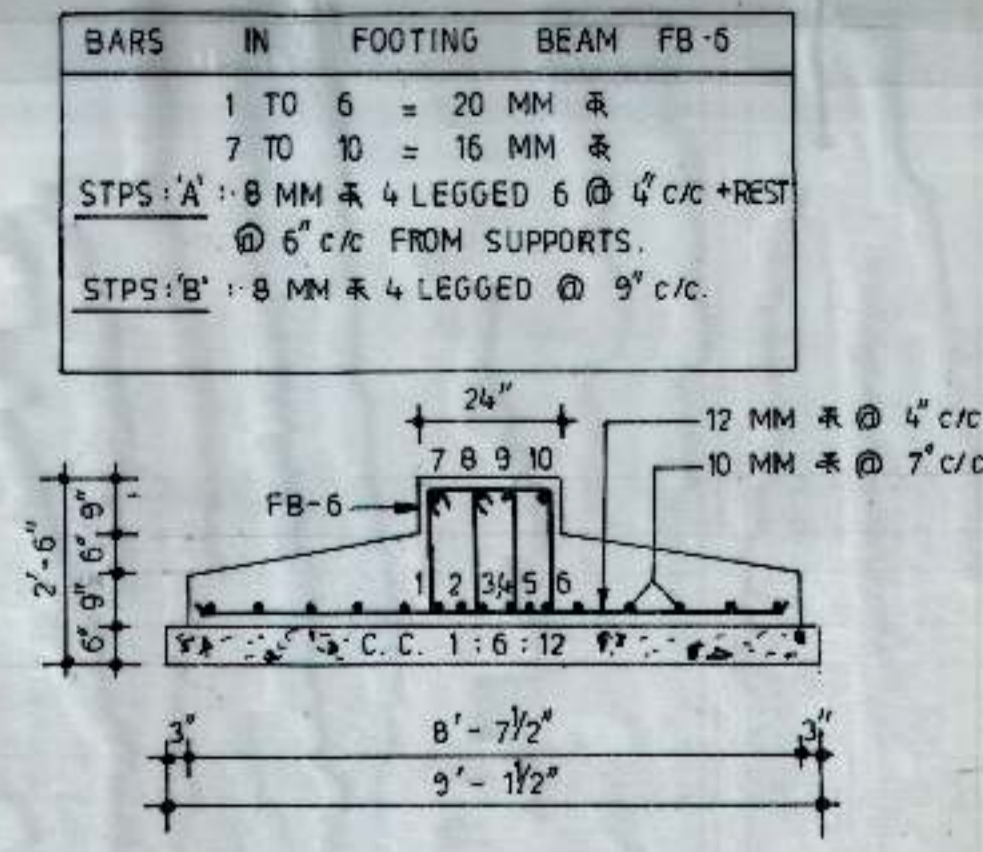
FOOTING F-5



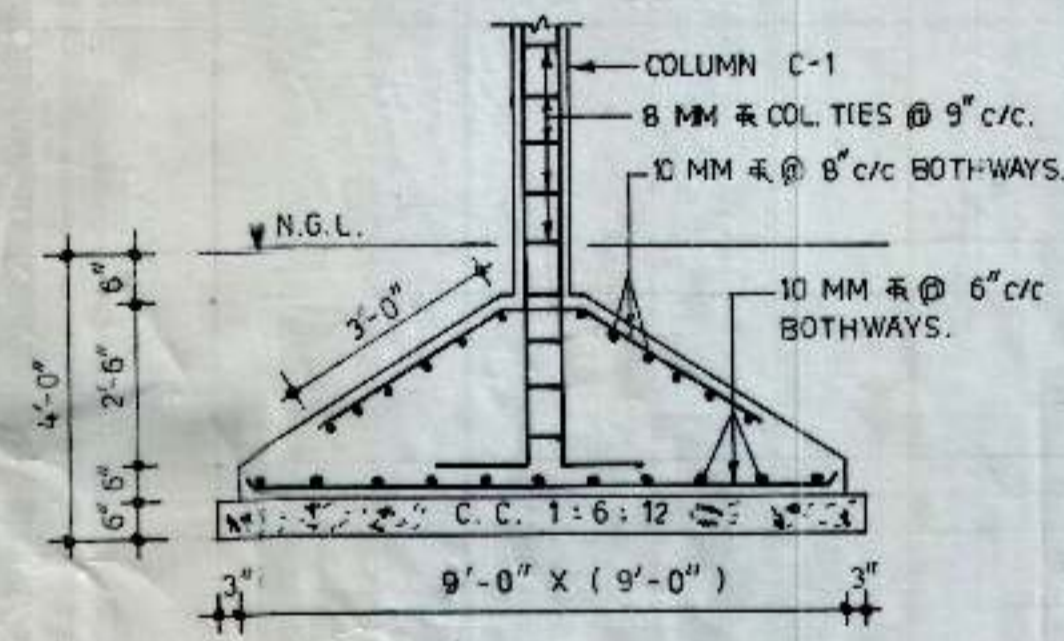
SECTION 5-5



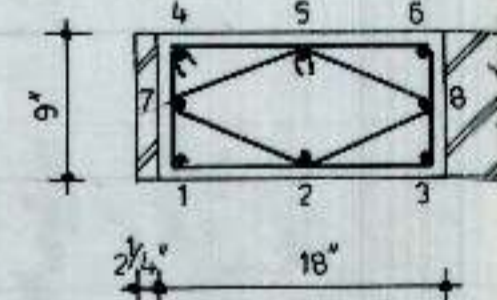
FOOTING F-6



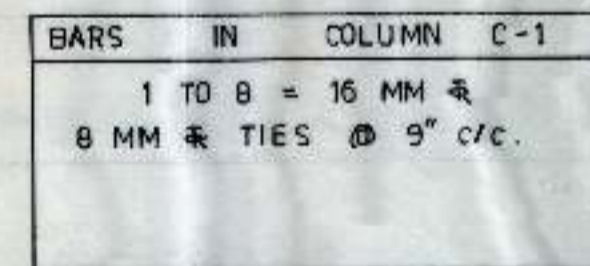
SECTION 6-6



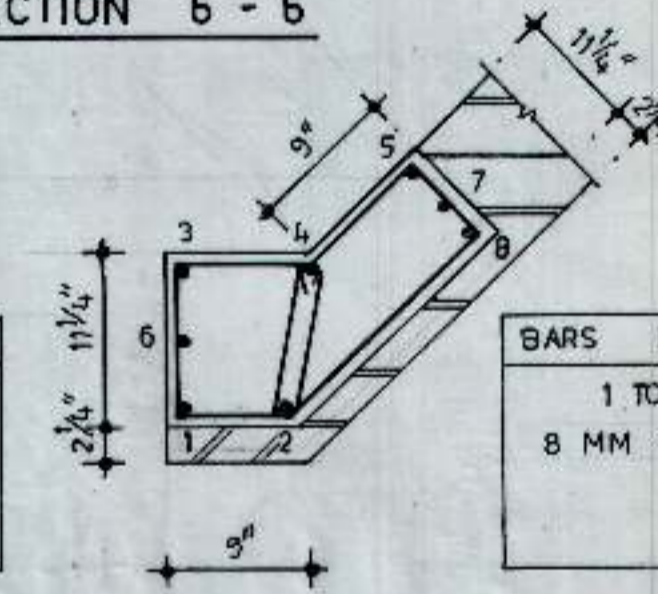
FOOTING F-7



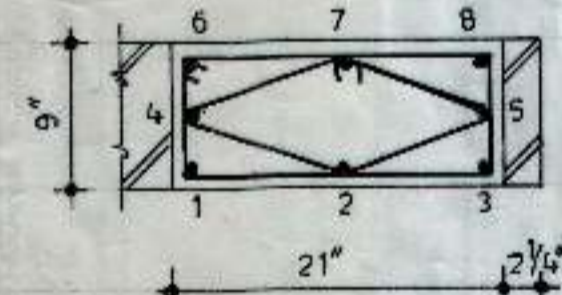
COLUMN C-1



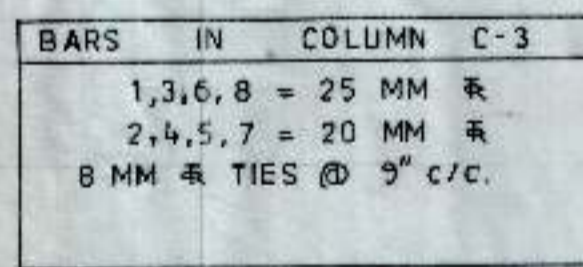
COLUMN C-2



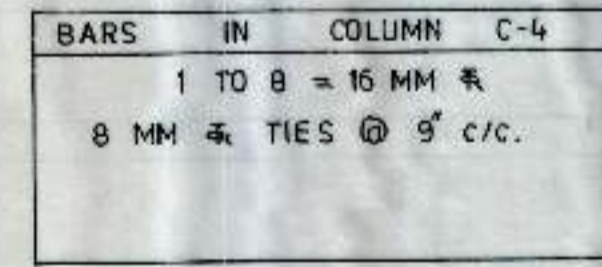
COLUMN C-6



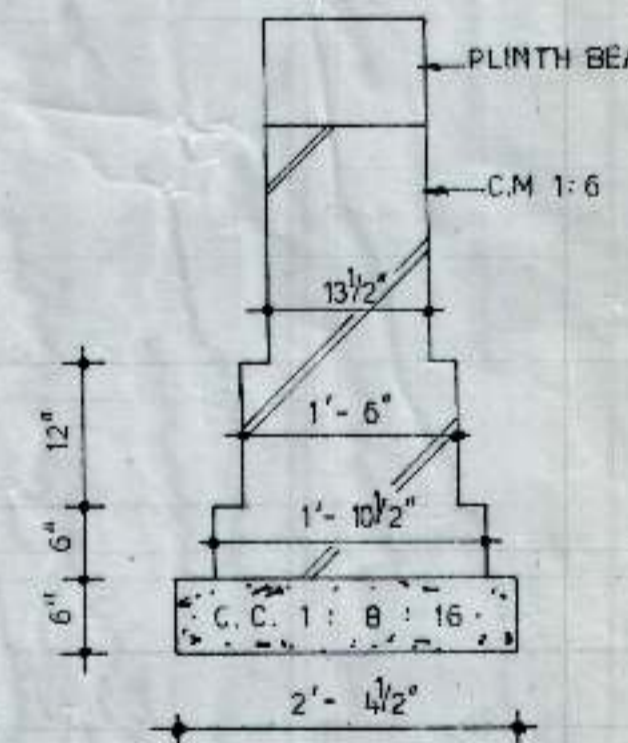
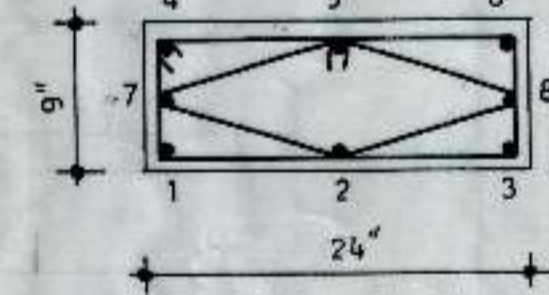
COLUMN C-3



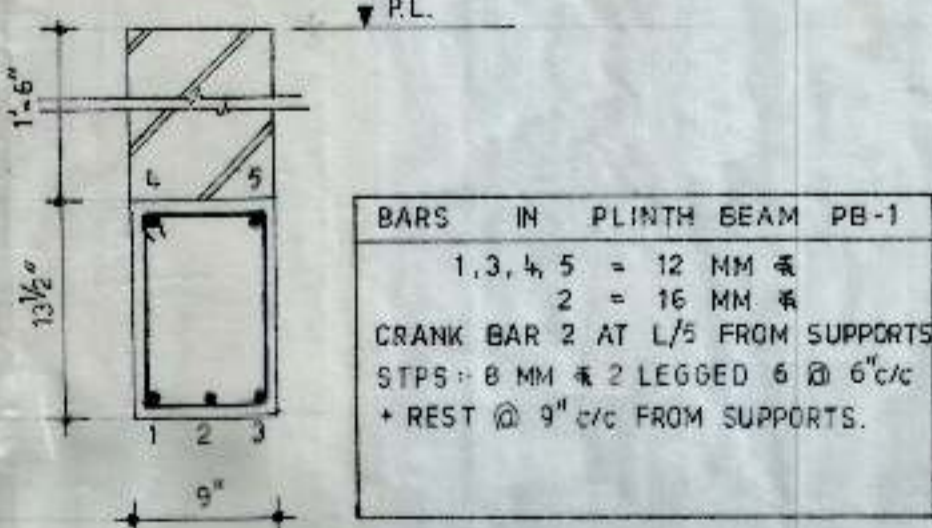
COLUMN C-4



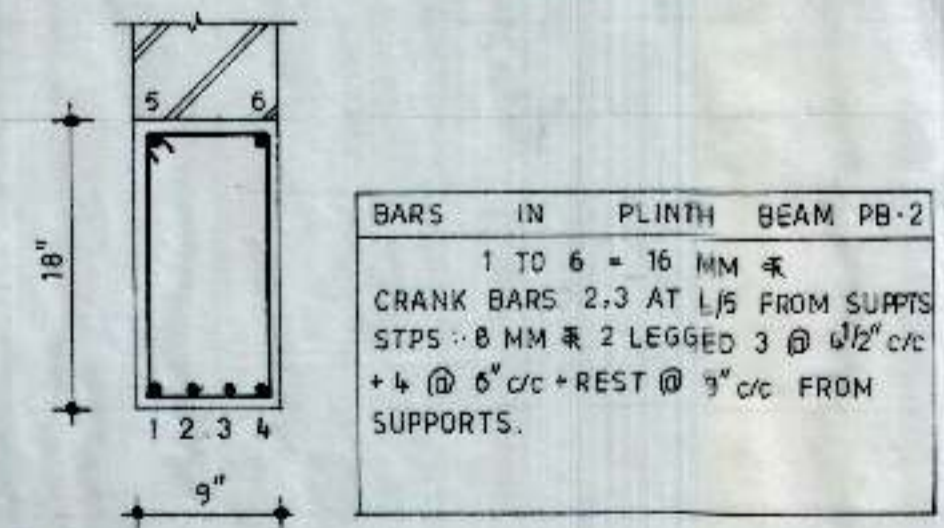
COLUMN C-5



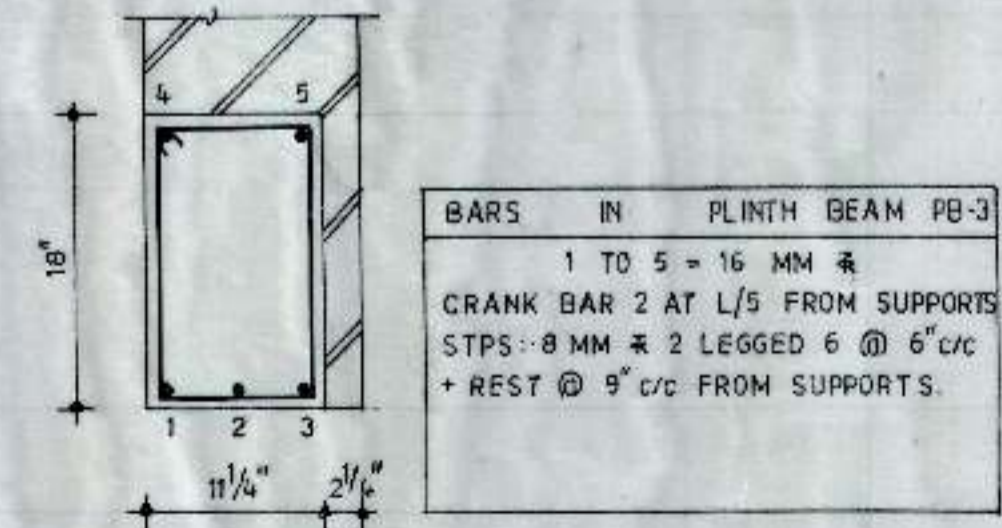
TOE WALL



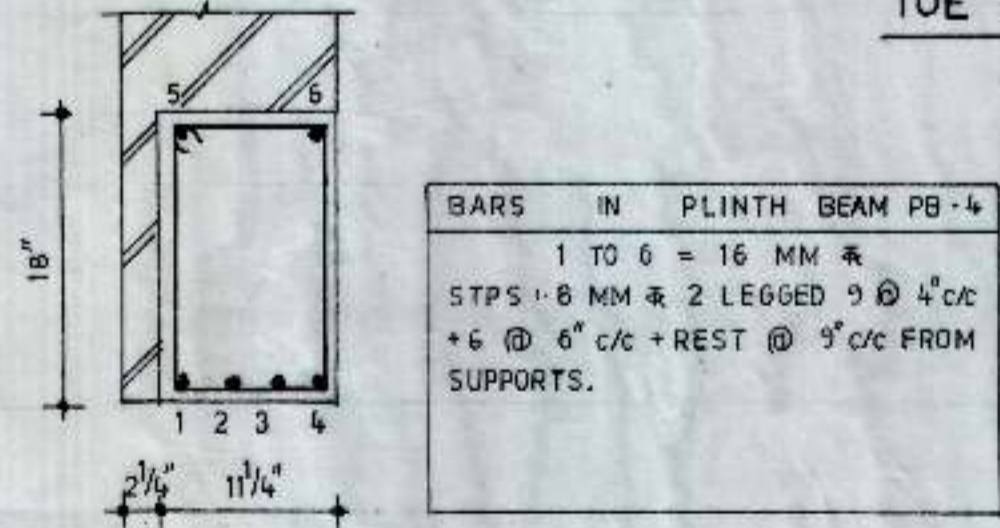
PLINTH BEAM PB-1



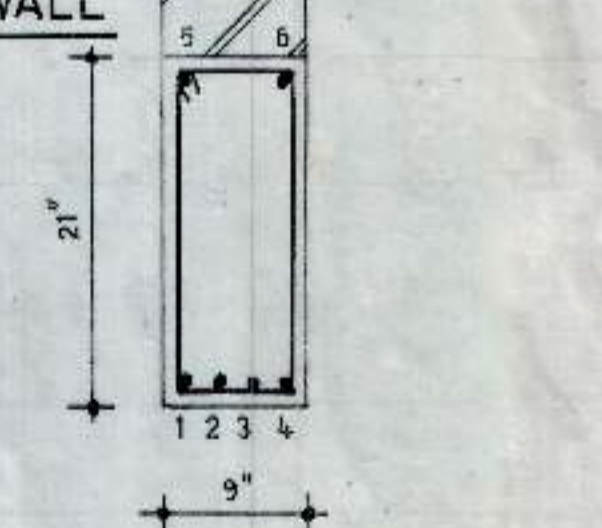
PLINTH BEAM PB-2



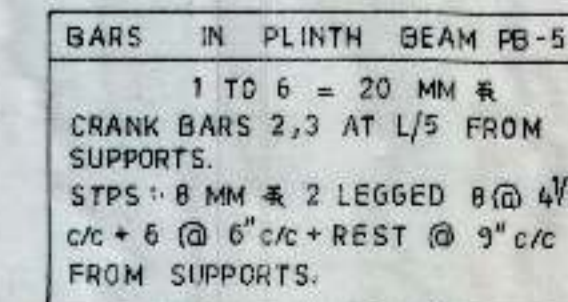
PLINTH BEAM PB-3



PLINTH BEAM PB-4



PLINTH BEAM PB-5



CLUSTER TYPE FOUR STOREYED HOUSE TYPE IV FOR P.G.I SECTOR - 12 A CHANDIGARH

- NOTES :-
 1. FOR STRUCTURAL NOTES REFER DRG NO. 01, JOB NO. FS
 2. KEEP TOP OF PLINTH BEAMS AT 1'-6" BELOW PLINTH LEVEL.

CHANDIGARH HOUSING BOARD

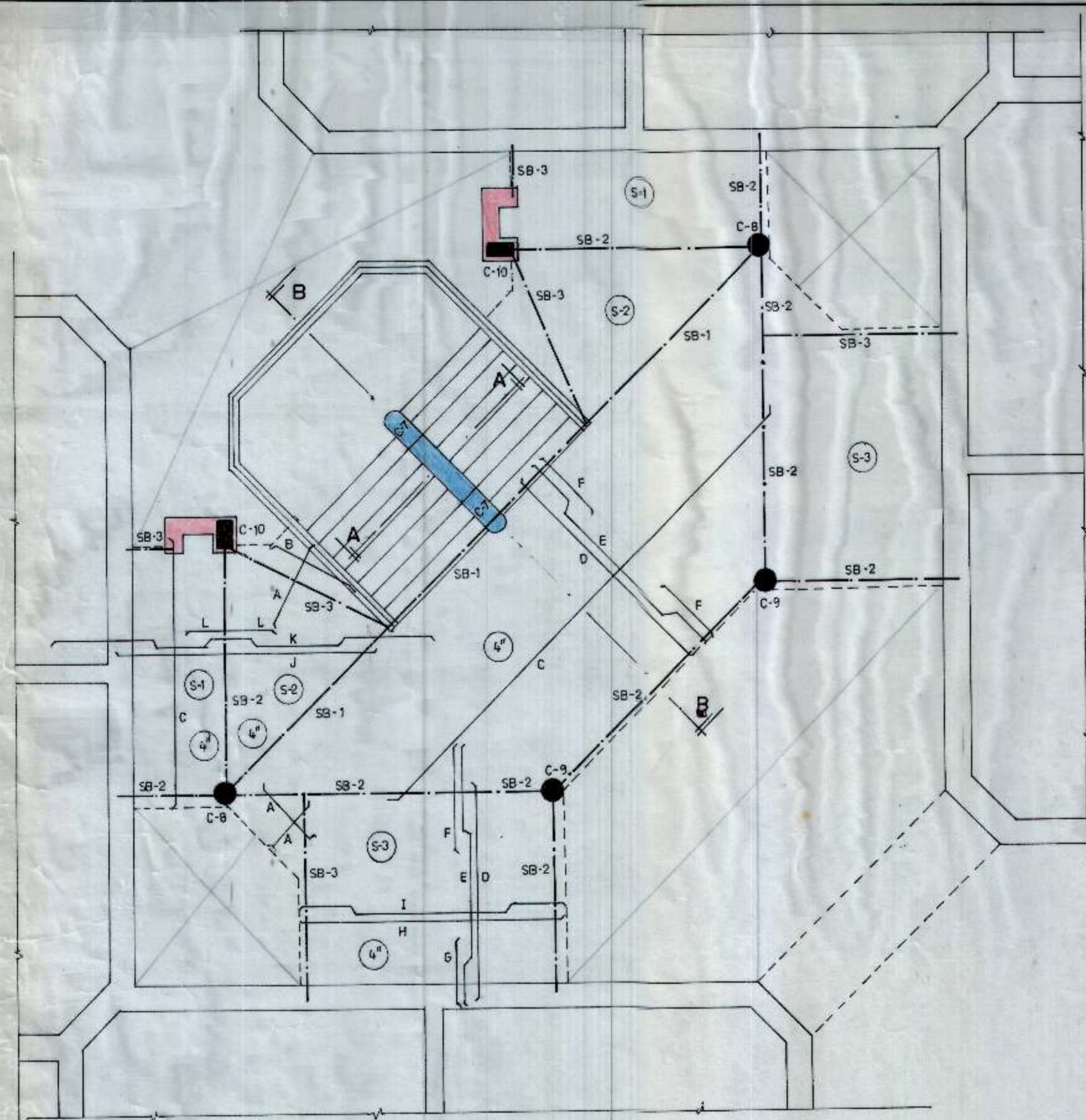
TITLE :-
 DETAILS OF FOUNDATION

SCALE :- 3/8" = 1'-0" 8" = 1" = 1'-0"	CHECKED BY :-
DEALT BY :- K.K.	DATED :- NOV., 1995
JOB NO. :- FS	DRG NO. :- 02

M.S.T. CONSULTANTS
 S.C.F. 23, SECTOR - 16
 CHANDIGARH

CLUSTER TYPE FOUR STORED
HOUSE TYPE IV FOR P.G.I.
SECTOR - 12 A
CHANDIGARH

NOTES :-
1. FOR STRUCTURAL NOTES REFER DRG NO. 01,
JOB NO. FS.



BARS IN SLAB		
A	10 MM	8" c/c
B, C	8 MM	9" c/c
D, E	10 MM	12" c/c
F, G	8 MM	12" c/c
H, J	8 MM	14" c/c
I, K, L	10 MM	14" c/c

KEY PLAN

BARS IN BEAM SB-1		
1 TO 5	= 16 MM	CRANK BAR 2 AT 2'-9" FROM SUPPORTS
STPS	= 8 MM	2 LEGGED @ 6" c/c + REST @ 9" c/c FROM SUPPORTS.

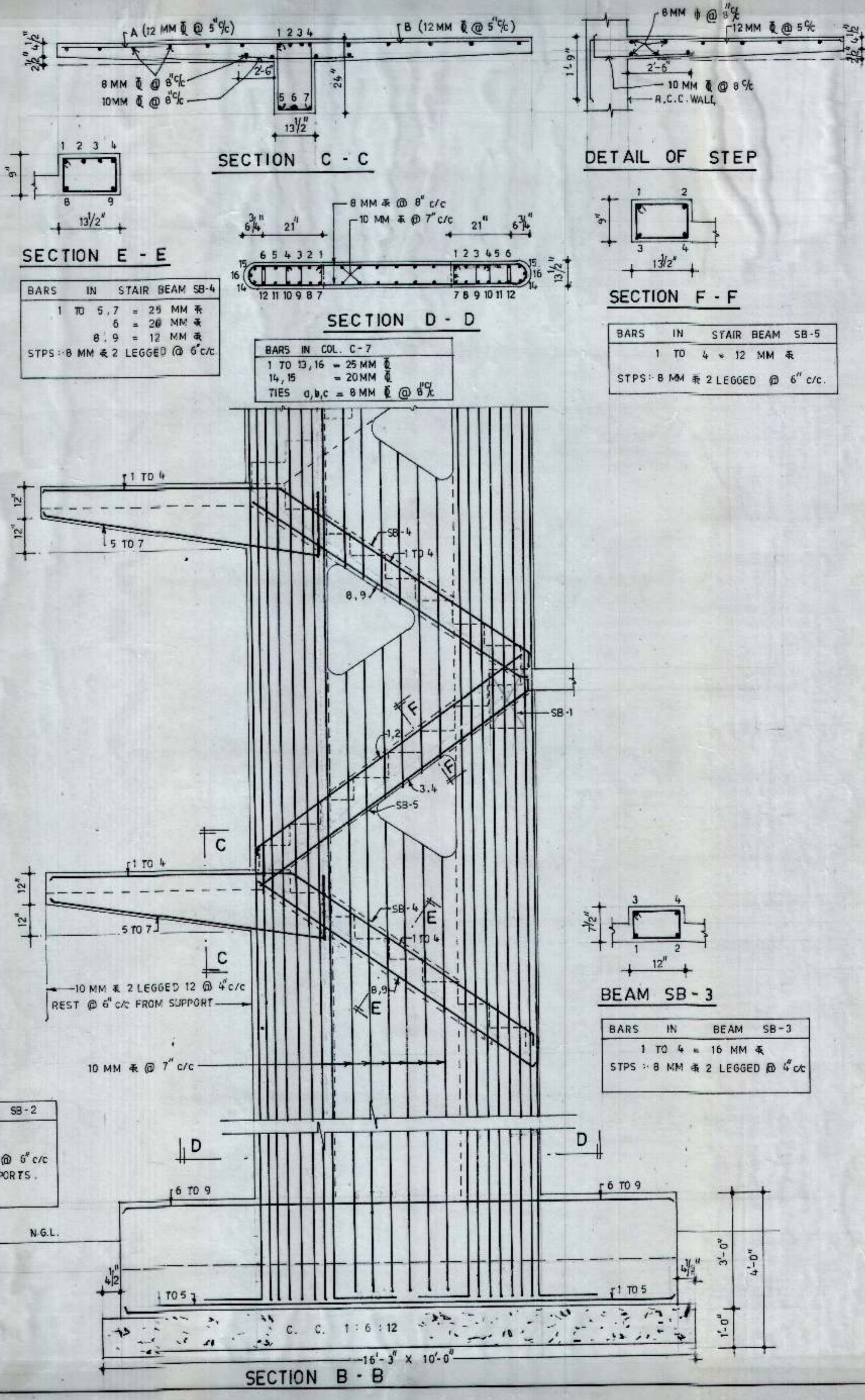
BEAM SB-1

BARS IN BEAM SB-2		
1, 2	= 16 MM	
3, 4	= 12 MM	
STPS	= 8 MM	2 LEGGED @ 4" c/c + REST @ 9" c/c FROM SUPPORTS.

BEAM SB-2

BARS IN FB		
1 TO 5	= 20 MM	
6 TO 9	= 16 MM	
STPS	= 10 MM	4 LEGGED @ 5" c/c

SECTION A - A



SECTION C - C

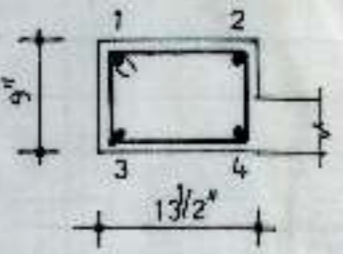
SECTION E - E

BARS IN STAIR BEAM SB-4		
1 TO 5, 7	= 25 MM	
6	= 20 MM	
8, 9	= 12 MM	
STPS	= 8 MM	2 LEGGED @ 6" c/c

SECTION D - D

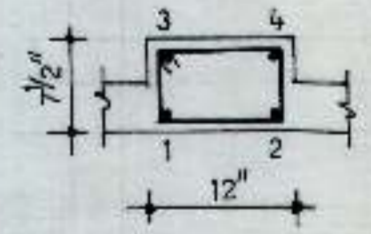
BARS IN COL. C-7		
1 TO 13, 16	= 25 MM	
14, 15	= 20 MM	
TIES	a, b, c	= 8 MM @ 6"

DETAIL OF STEP



SECTION F - F

BARS IN STAIR BEAM SB-5		
1 TO 4	= 12 MM	
STPS	= 8 MM	2 LEGGED @ 6" c/c



BEAM SB-3

BARS IN BEAM SB-3		
1 TO 4	= 16 MM	
STPS	= 8 MM	2 LEGGED @ 4" c/c

SECTION B - B

CHANDIGARH
HOUSING BOARD

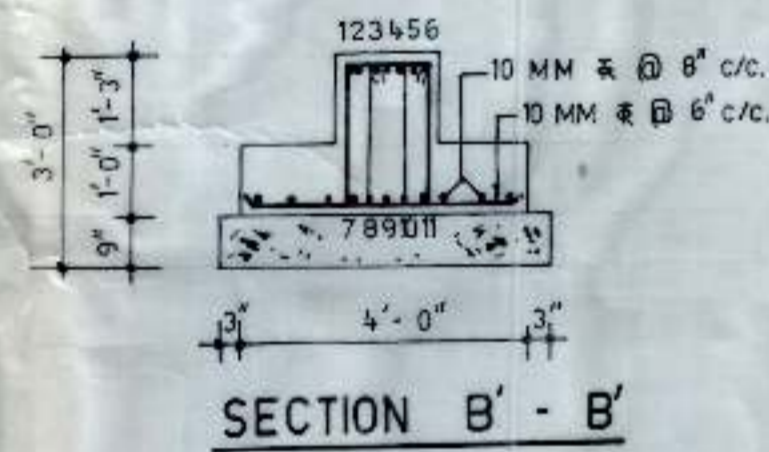
TITLE :-
DETAILS OF STAIRCASE

SCALE :- 1/2" = 1'-0"	CHECKED BY :-
DEALT BY :- K.K.	DATED :- FEB., 1956
JOB NO. :- FS	DRG NO. :- 03

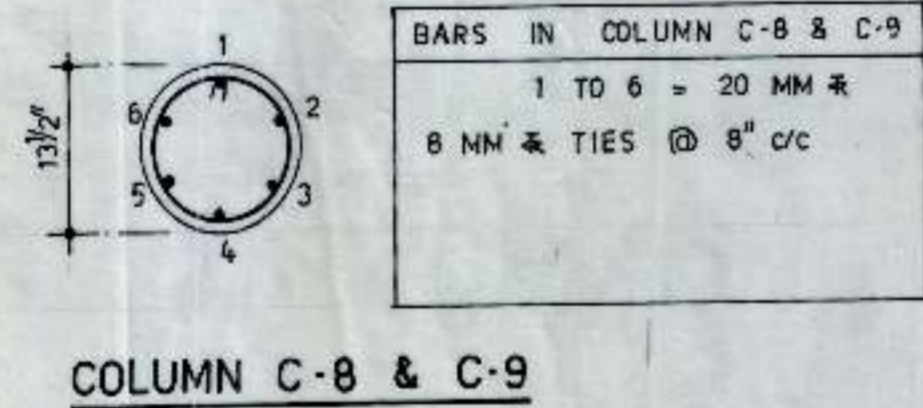
M.S.T. CONSULTANTS
S.C.F. 23, SECTOR - 16
CHANDIGARH

CLUSTER TYPE FOUR STOREY
HOUSE TYPE IV FOR P.G.I
SECTOR - 12 A
CHANDIGARH

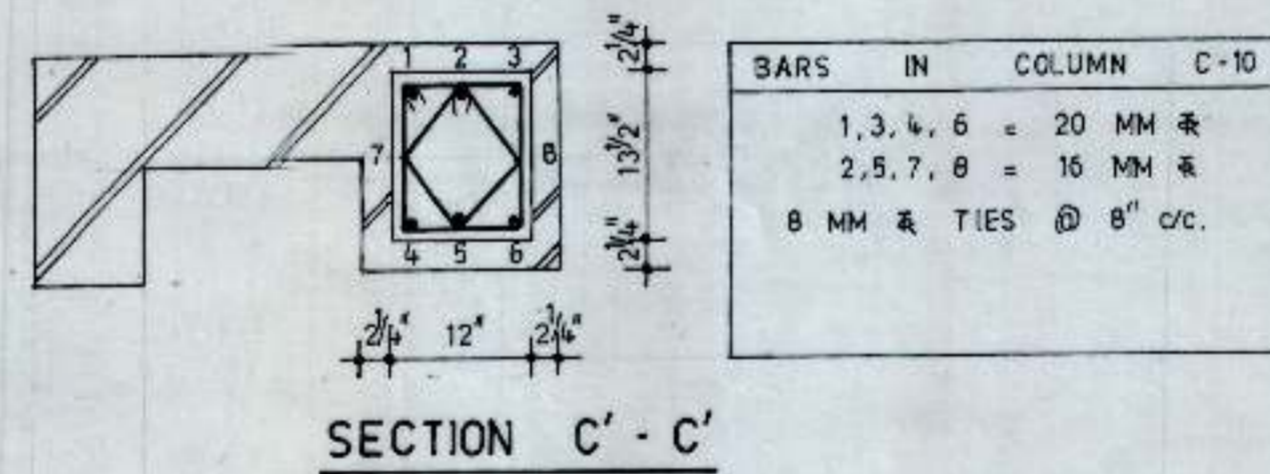
NOTES :-
1. FOR STRUCTURAL NOTES REFER DRG NO. 01,
JOB NO. FS.



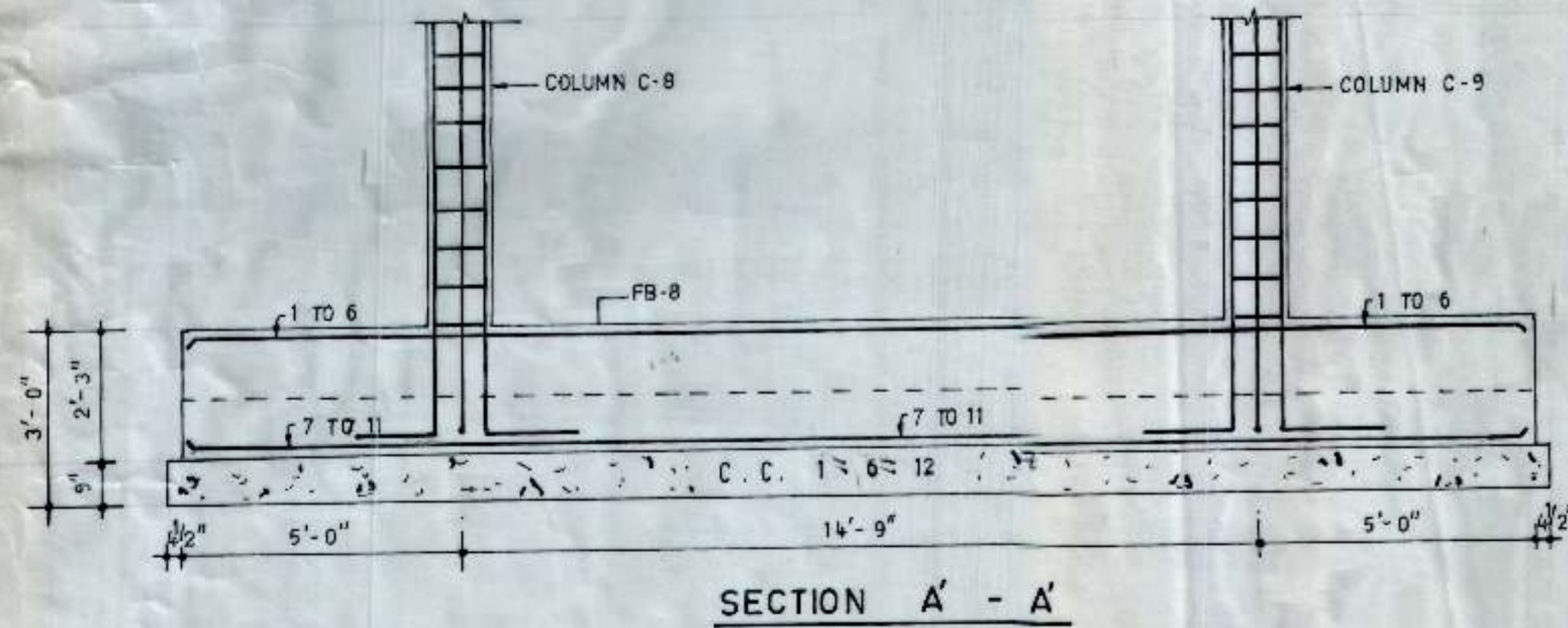
BARS IN FOUNDATION BEAM FB-8
1 TO 11 = 20 MM $\bar{\#}$
STPS: 10 MM $\bar{\#}$ & LEGGED 8 @ $\frac{1}{2}$ "
c/c + REST @ 6" c/c FROM SUPPORTS.



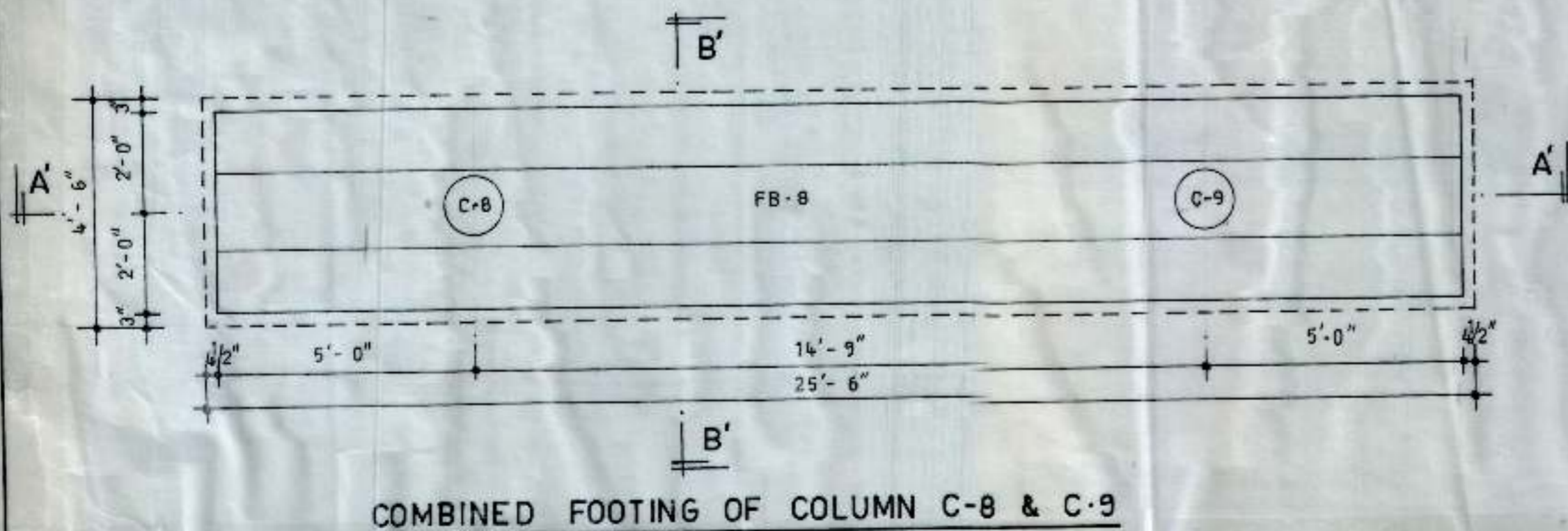
BARS IN COLUMN C-8 & C-9
1 TO 6 = 20 MM $\bar{\#}$
8 MM $\bar{\#}$ TIES @ 8" c/c



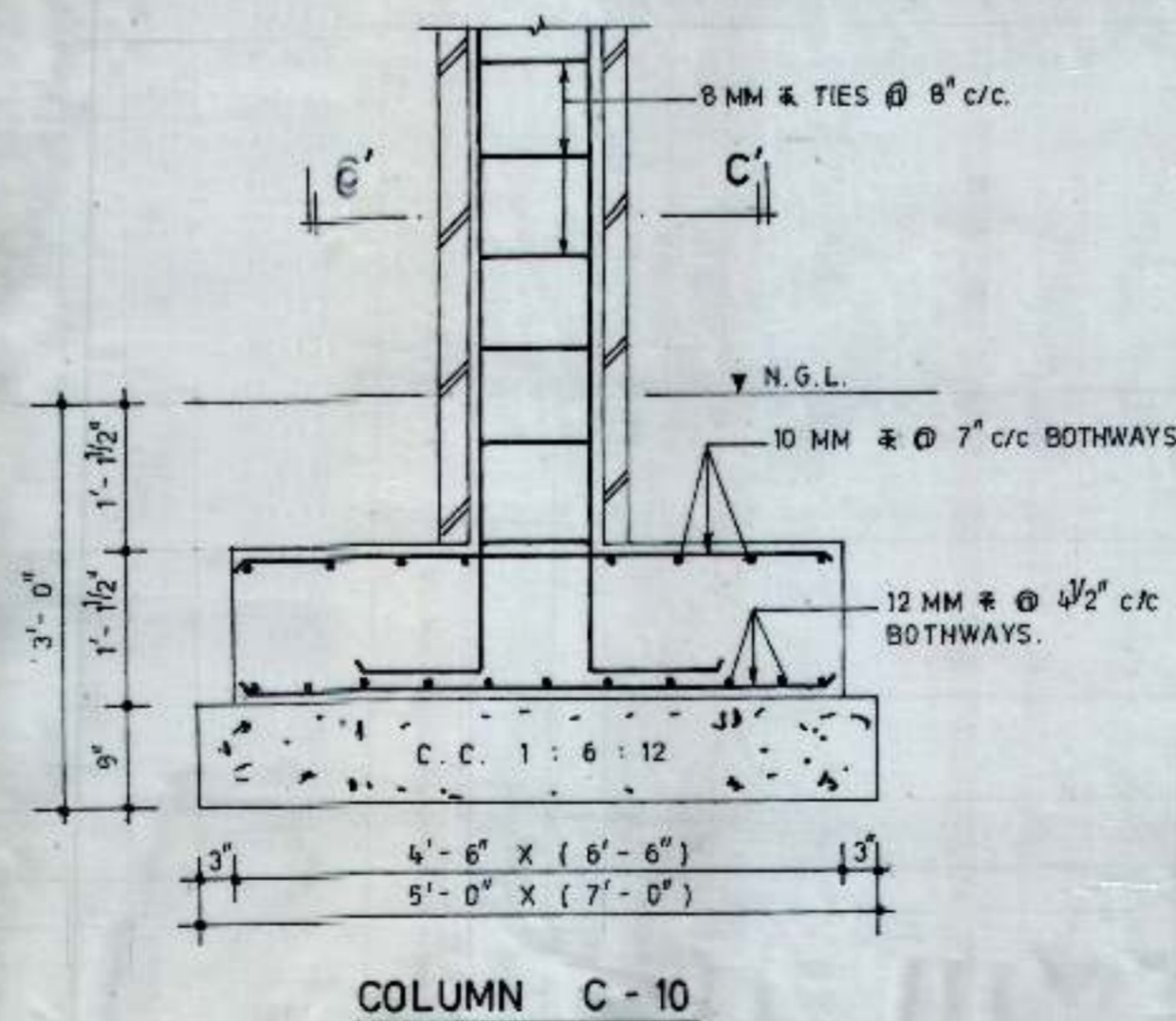
BARS IN COLUMN C-10
1, 3, 4, 6 = 20 MM $\bar{\#}$
2, 5, 7, 8 = 16 MM $\bar{\#}$
8 MM $\bar{\#}$ TIES @ 8" c/c



SECTION A' - A'



COMBINED FOOTING OF COLUMN C-8 & C-9



COLUMN C-10

R.B. Singh

CHANDIGARH
HOUSING BOARD

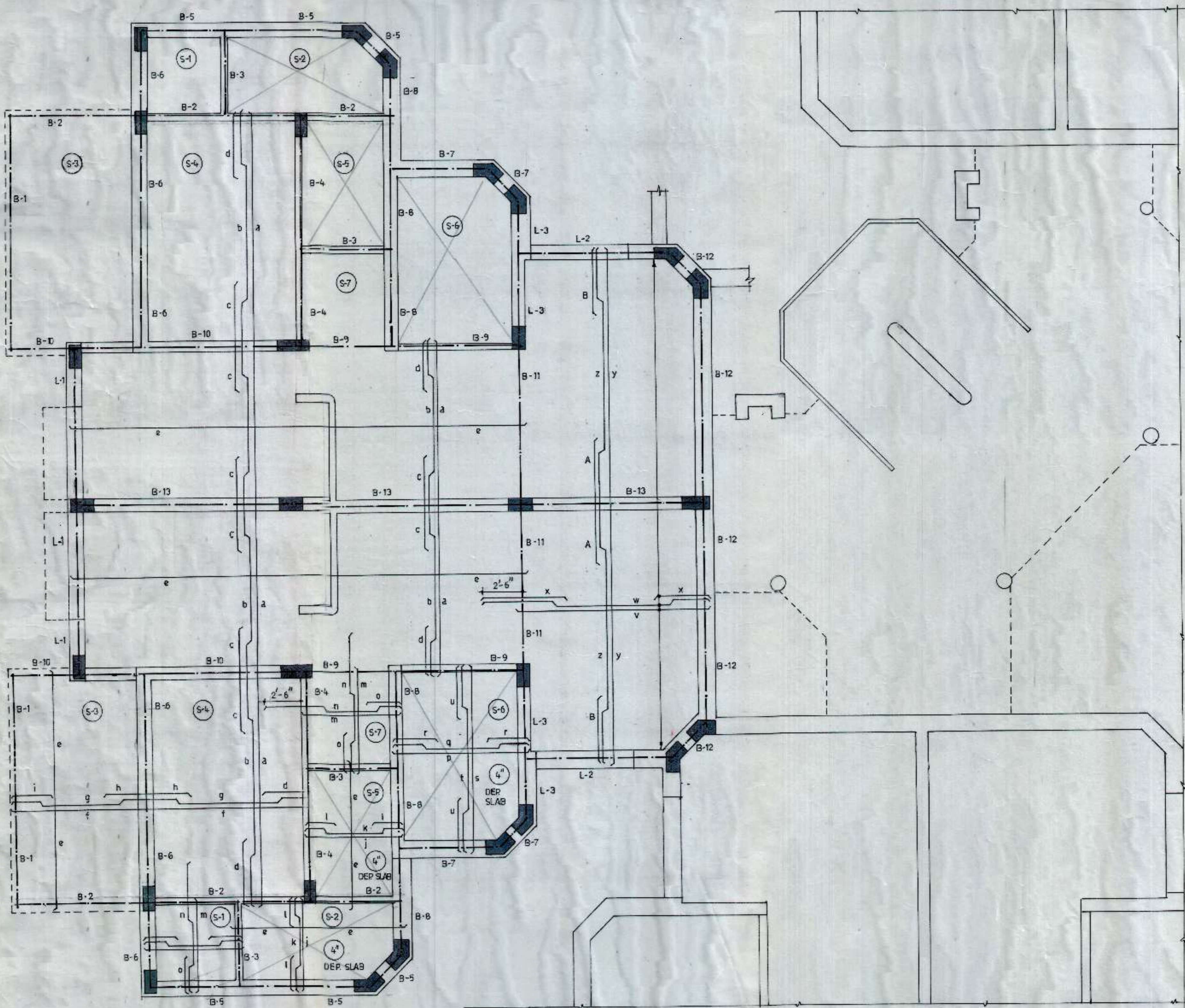
TITLE :-
DETAIL OF STAIRCASE

SCALE :- 3/8" = 1'-0" & 3/16" = 1'-0"	CHECKED BY :-
DEALT BY :- K.K.	DATED :- FEB, 1996
JOB NO. :- FS	DRG NO. :- 04

M.S.T. CONSULTANTS
S.C.F. 23, SECTOR - 16
CHANDIGARH

CLUSTER TYPE FOUR STOREY
 HOUSE TYPE IV FOR P.G.I.
 SECTOR - 12 - A
 CHANDIGARH

NOTES :-
 1. FOR STRUCTURAL NOTES REFER DRG NO. 01,
 JOB NO. FS.



BARS	IN	SLAB
a, b, c	= 10 MM	⊗ 14" c/c
d, f, i	= 8 MM	⊗ 14" c/c
e	= 8 MM	⊗ 10" c/c
g, h, k	= 10 MM	⊗ 14" c/c
j, l	= 8 MM	⊗ 14" c/c
m, n, o	= 8 MM	⊗ 16" c/c
p, q	= 10 MM	⊗ 15" c/c
r	= 8 MM	⊗ 15" c/c
s, t, u	= 8 MM	⊗ 18" c/c
v, w	= 10 MM	⊗ 14" c/c
x	= 8 MM	⊗ 14" c/c
y, z, B	= 8 MM	⊗ 16" c/c
A	= 10 MM	⊗ 16" c/c

NOTE :- SLAB 4 1/2" THICK THROUGHOUT, UNLESS OTHERWISE SPECIFIED.

R. Singh

CHANDIGARH
 HOUSING BOARD

TITLE :-
 DETAILS OF SLAB & BEAMS
 AT FIRST & SECOND FLOOR
 LEVEL.

SCALE :- 1/4" = 1'-0" CHECKED BY :-

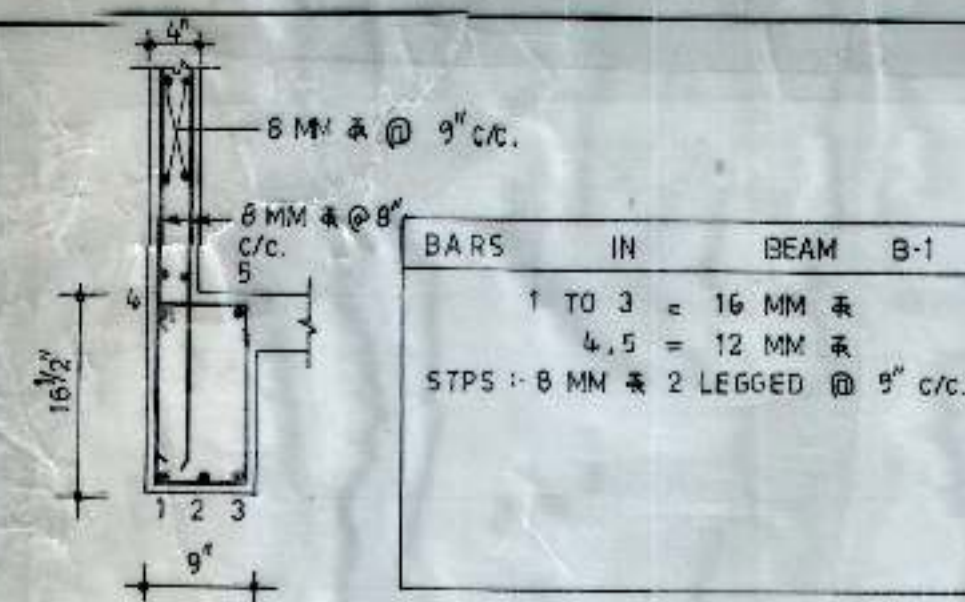
DEALT BY :- K.K. DATED :- FEB, 1996

JOB NO. :- FS ORG. NO. :- 05

M.S.T. CONSULTANTS
 S.C.F. 23, SECTOR - 16
 CHANDIGARH

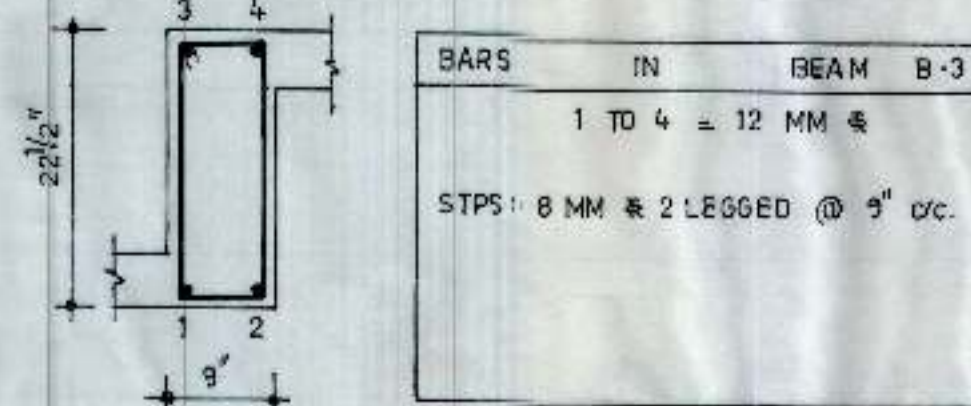
CLUSTER TYPE FOUR STOREY HOUSE TYPE -IV FOR P.G.I
SECTOR - 12 - A
CHANDIGARH

NOTES :-
1. FOR STRUCTURAL NOTES REFER DRG NO. 01,
JOB NO. FS.



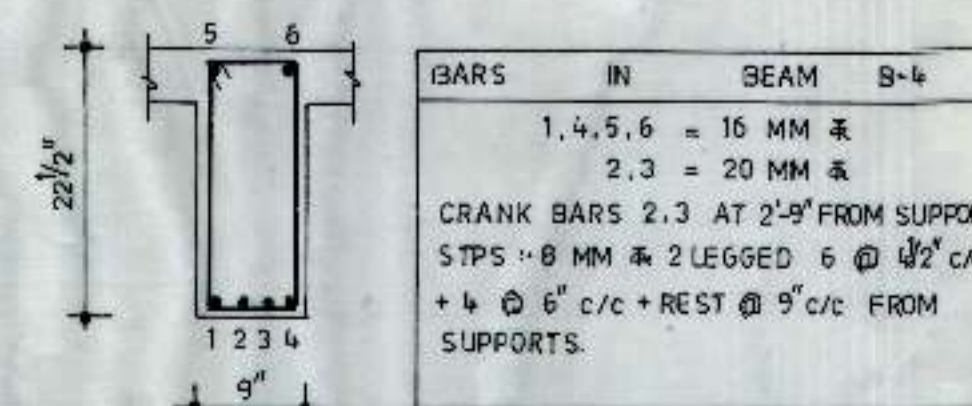
BARS IN BEAM B-1	
1 TO 3	= 16 MM 筋
4, 5	= 12 MM 筋
STPS : 8 MM 筋 2 LEGGED @ 9" c/c.	

BEAM B-1



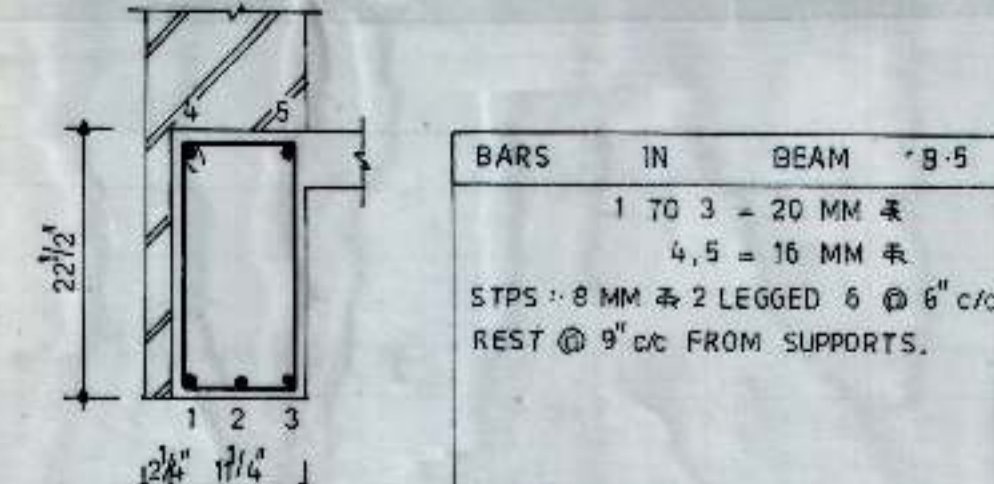
BARS IN BEAM B-3	
1 TO 4	= 12 MM 筋
STPS : 8 MM 筋 2 LEGGED @ 9" c/c.	

BEAM B-3



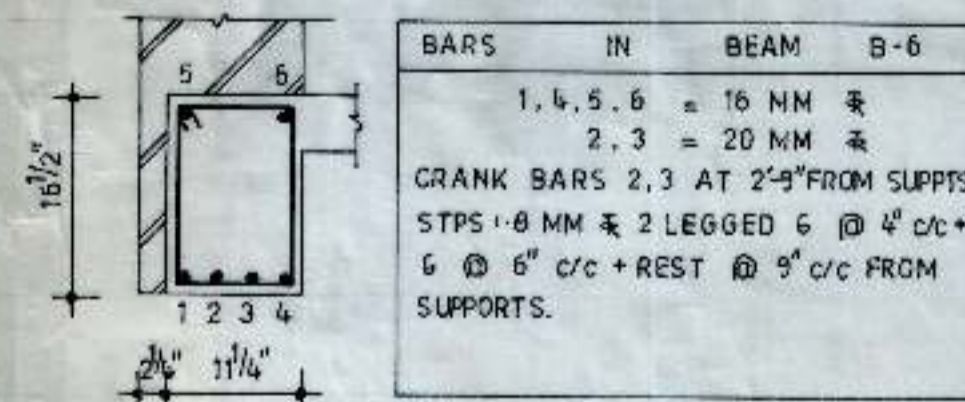
BARS IN BEAM B-4	
1, 4, 5, 6	= 16 MM 筋
2, 3	= 20 MM 筋
CRANK BARS 2, 3 AT 2'-9" FROM SUPPORT	
STPS : 8 MM 筋 2 LEGGED @ 6" c/c + 4 @ 6" c/c + REST @ 9" c/c FROM SUPPORTS.	

BEAM B-4



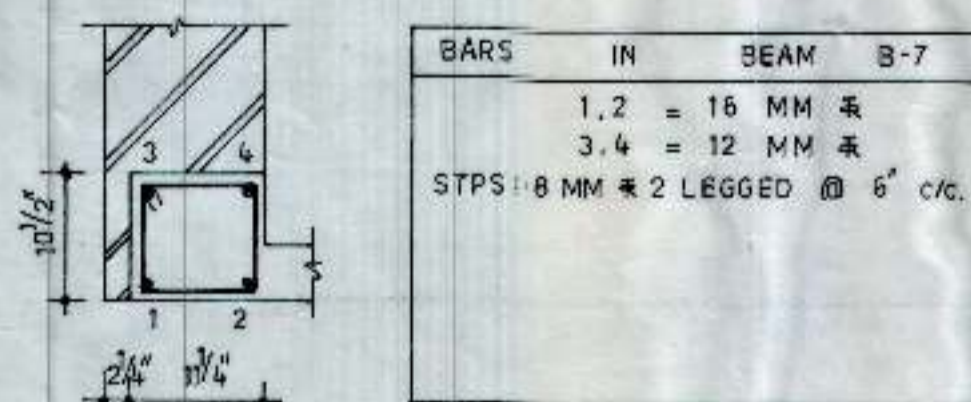
BARS IN BEAM B-5	
1 TO 3	= 20 MM 筋
4, 5	= 16 MM 筋
STPS : 8 MM 筋 2 LEGGED @ 6" c/c + REST @ 9" c/c FROM SUPPORTS.	

BEAM B-5



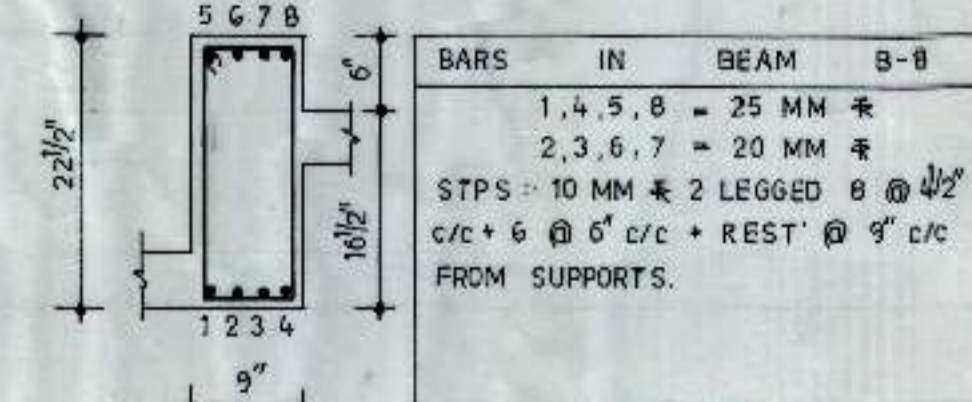
BARS IN BEAM B-6	
1, 4, 5, 6	= 16 MM 筋
2, 3	= 20 MM 筋
CRANK BARS 2, 3 AT 2'-9" FROM SUPPTS.	
STPS : 8 MM 筋 2 LEGGED @ 6" c/c + 6 @ 6" c/c + REST @ 9" c/c FROM SUPPORTS.	

BEAM B-6



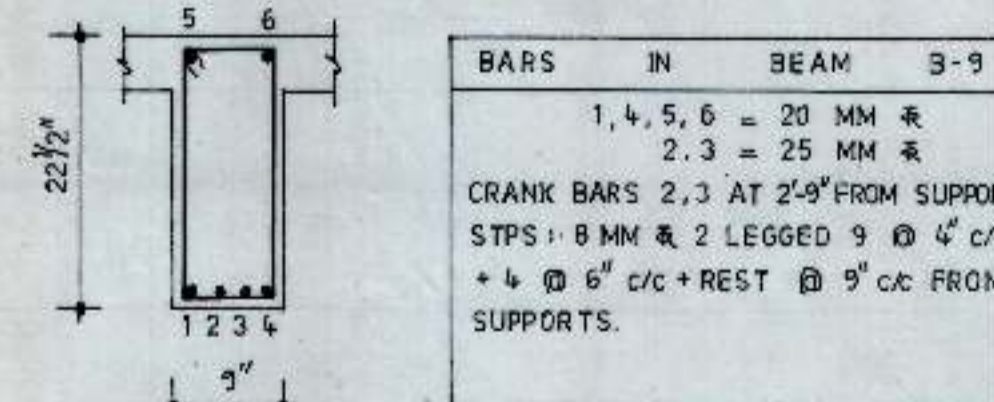
BARS IN BEAM B-7	
1, 2	= 16 MM 筋
3, 4	= 12 MM 筋
STPS : 8 MM 筋 2 LEGGED @ 6" c/c.	

BEAM B-7



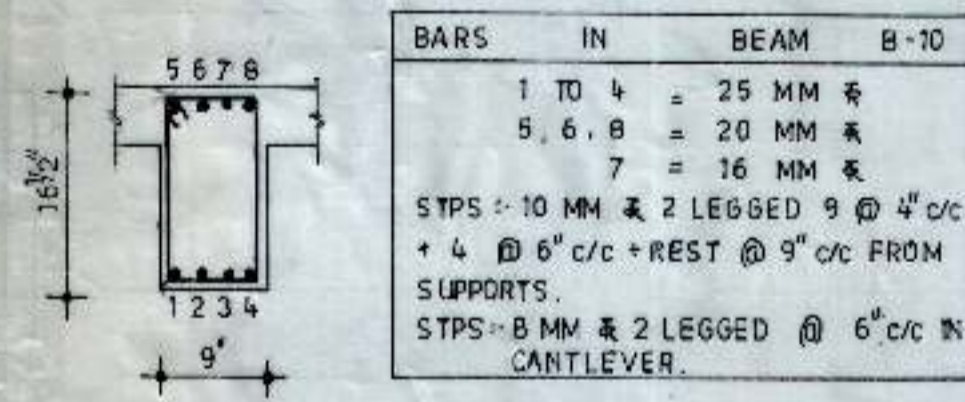
BARS IN BEAM B-8	
1, 4, 5, 8	= 25 MM 筋
2, 3, 6, 7	= 20 MM 筋
STPS : 10 MM 筋 2 LEGGED @ 4 1/2" c/c + 6 @ 6" c/c + REST @ 9" c/c FROM SUPPORTS.	

BEAM B-8



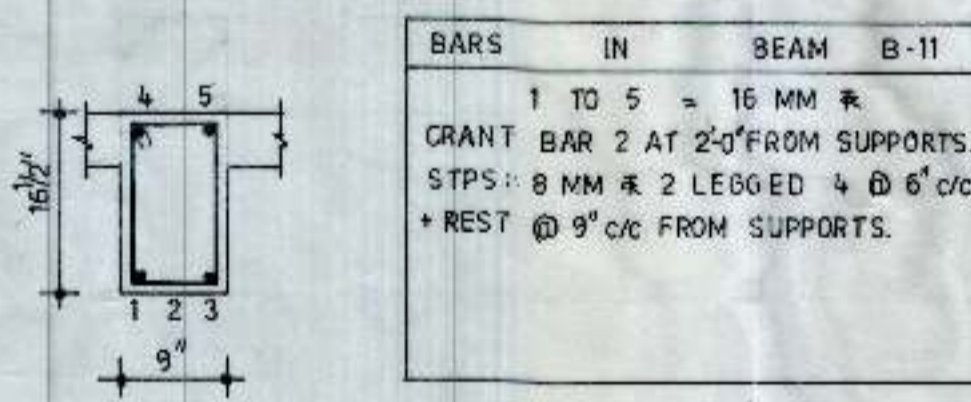
BARS IN BEAM B-9	
1, 4, 5, 6	= 20 MM 筋
2, 3	= 25 MM 筋
CRANK BARS 2, 3 AT 2'-9" FROM SUPPORTS	
STPS : 8 MM 筋 2 LEGGED @ 9" c/c + 4 @ 6" c/c + REST @ 9" c/c FROM SUPPORTS.	

BEAM B-9



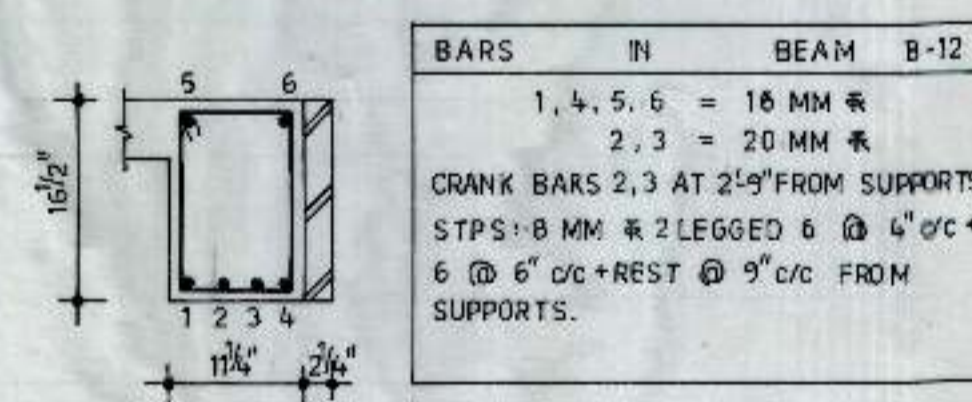
BARS IN BEAM B-10	
1 TO 4	= 25 MM 筋
5, 6, 8	= 20 MM 筋
7	= 16 MM 筋
STPS : 10 MM 筋 2 LEGGED @ 9" c/c + 4 @ 6" c/c + REST @ 9" c/c FROM SUPPORTS.	
STPS : 8 MM 筋 2 LEGGED @ 6" c/c IN CANTILEVER.	

BEAM B-10



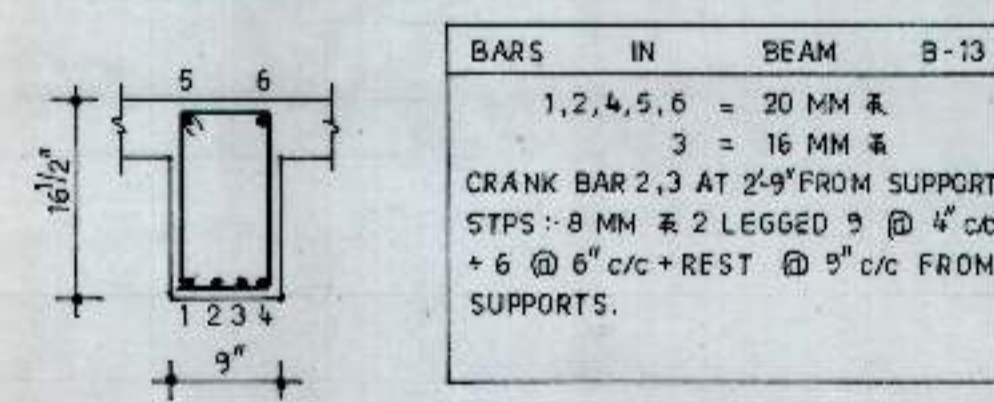
BARS IN BEAM B-11	
1 TO 5	= 16 MM 筋
CRANK BAR 2 AT 2'-0" FROM SUPPORTS.	
STPS : 8 MM 筋 2 LEGGED @ 4 @ 6" c/c + REST @ 9" c/c FROM SUPPORTS.	

BEAM B-11



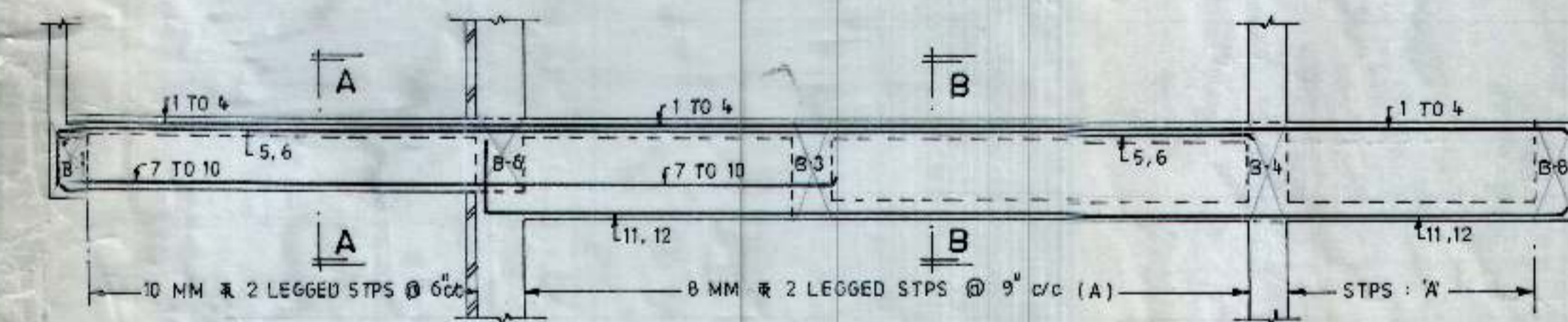
BARS IN BEAM B-12	
1, 4, 5, 6	= 16 MM 筋
2, 3	= 20 MM 筋
CRANK BARS 2, 3 AT 2'-9" FROM SUPPORTS	
STPS : 8 MM 筋 2 LEGGED @ 4 @ 4" c/c + 6 @ 6" c/c + REST @ 9" c/c FROM SUPPORTS.	

BEAM B-12

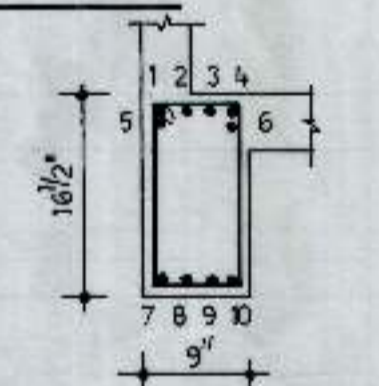


BARS IN BEAM B-13	
1, 2, 4, 5, 6	= 20 MM 筋
3	= 16 MM 筋
CRANK BAR 2, 3 AT 2'-9" FROM SUPPORTS.	
STPS : 8 MM 筋 2 LEGGED @ 9" c/c + 4 @ 6" c/c + REST @ 9" c/c FROM SUPPORTS.	

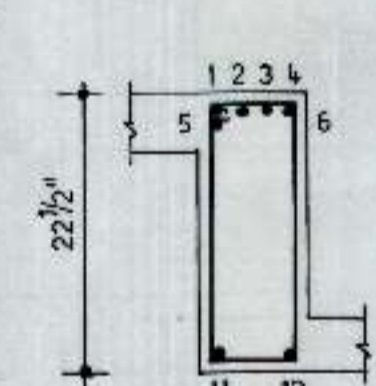
BEAM B-13



BEAM B-2

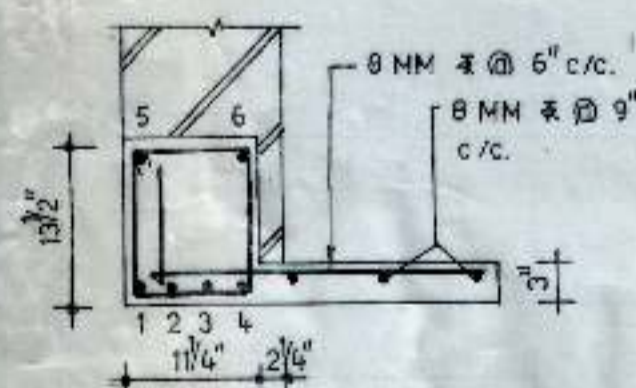


SECTION A-A



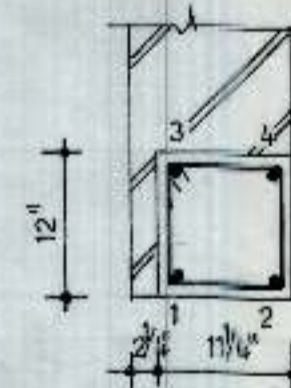
SECTION B-B

BARS IN BEAM B-2	
1, 4, 5, 6, 9, 11, 12	= 20 MM 筋
2, 3, 7, 8, 10	= 25 MM 筋



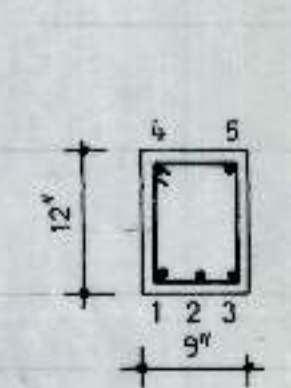
LINTEL L-1

BARS IN LINTEL L-1	
1 TO 6	= 12 MM 筋
STPS : 8 MM 筋 2 LEGGED @ 9" c/c.	



LINTEL L-2

BARS IN LINTEL L-2	
1, 2	= 16 MM 筋
3, 4	= 12 MM 筋
STPS : 8 MM 筋 2 LEGGED @ 9" c/c.	



LINTEL L-3

BARS IN LINTEL L-3	
1 TO 5	= 16 MM 筋
STPS : 8 MM 筋 2 LEGGED @ 4 @ 6" c/c + REST @ 9" c/c FROM SUPPORTS.	

Handwritten signature

CHANDIGARH HOUSING BOARD

TITLE :-
DETAILS OF BEAM AT FIRST & SECOND FLOOR LEVEL.

SCALE :- 3/4" = 1'-0" & 3/8" = 1'-0"

CHECKED BY :-

DEALT BY :- K.K.

DATED :- FEB. 1996

JOB NO. :- FS

DRG NO. :- 06

M.S.T. CONSULTANTS

S.C.F. 23, SECTOR - 16
CHANDIGARH

CLUSTER TYPE FOUR STOREY
HOUSE TYPE IV FOR P.G.I.
SECTOR 12 - A
CHANDIGARH

NOTES

1. FOR STRUCTURAL NOTES REFER DRG NO. 01, JOB NO. FS.
2. FOR DETAILS OF LINTEL L-1, L-2 & L-3 REFER DRG NO. 06, JOB NO. FS.

BARS IN SLAB	
a, b, c	= 10 MM \times @ 14" c/c.
d	= 8 MM \times @ 14" c/c.
e	= 8 MM \times @ 10" c/c.
f, g, h, i	= 10 MM \times @ 14" c/c.
j	= 8 MM \times @ 14" c/c.
k, l, n	= 8 MM \times @ 16" c/c.
m	= 10 MM \times @ 16" c/c.
o, p	= 10 MM \times @ 14" c/c.
q, r	= 8 MM \times @ 14" c/c.

NOTE: SLAB $\frac{1}{2}$ " THICK THROUGHOUT.

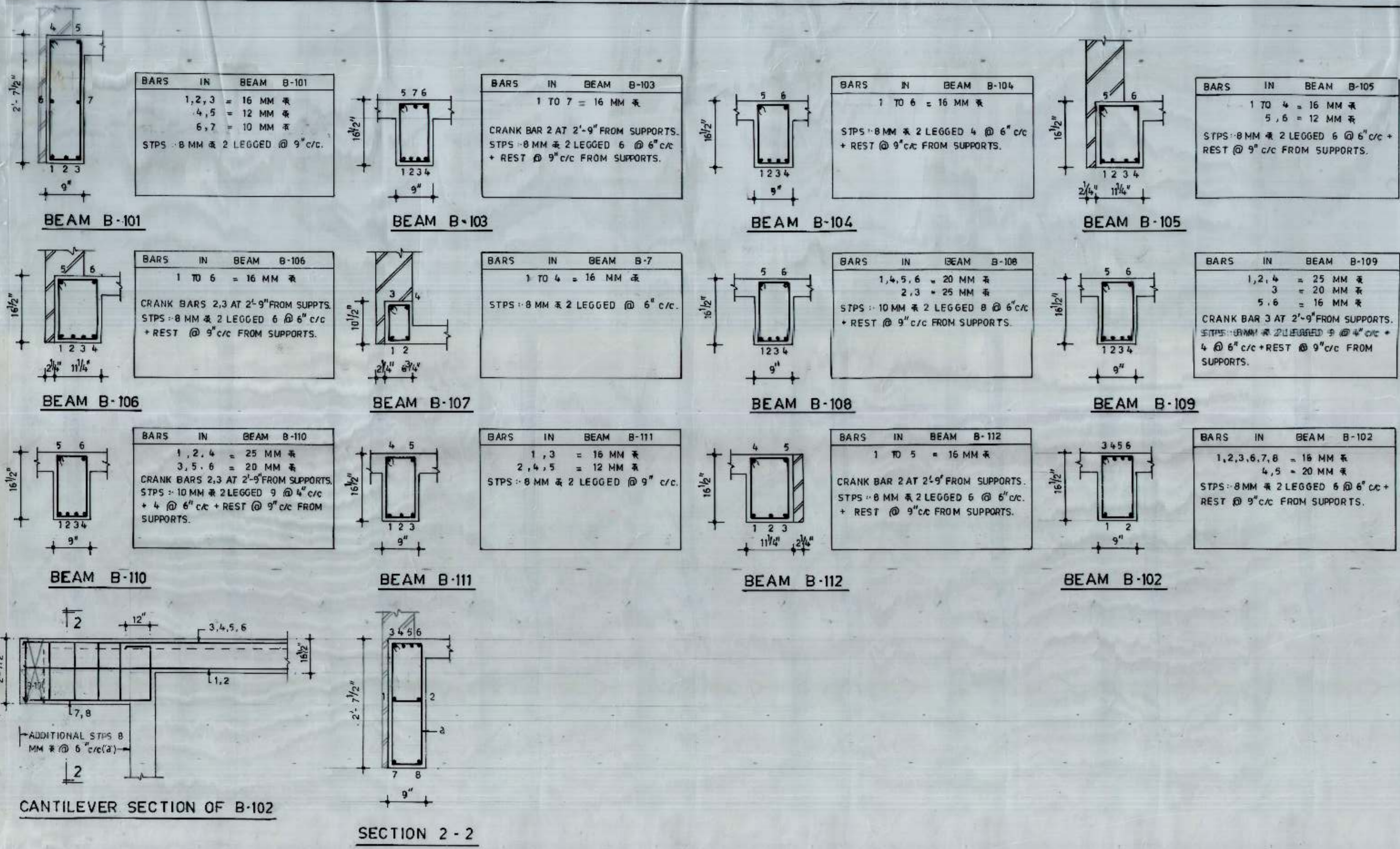
R. Singh

CHANDIGARH
HOUSING BOARD

TITLE :
DETAILS OF SLAB & BEAM
AT TERRACE LEVEL.

SCALE :	CHECKED BY :
DEALT BY : K.K.	DATED : SEPT., 1996
JOB NO. : FS	DRG NO. : 07

M.S.T. CONSULTANTS
S.C.F. 23, SECTOR - 16
CHANDIGARH



CLUSTER TYPE FOUR STORED
HOUSE TYPE IV FOR P.G.I
SECTOR 12 A
CHANDIGARH

NOTES: FOR STRUCTURAL NOTES REFER DRG
NO. 01, JOB NO. FS.

CHANDIGARH
HOUSING BOARD

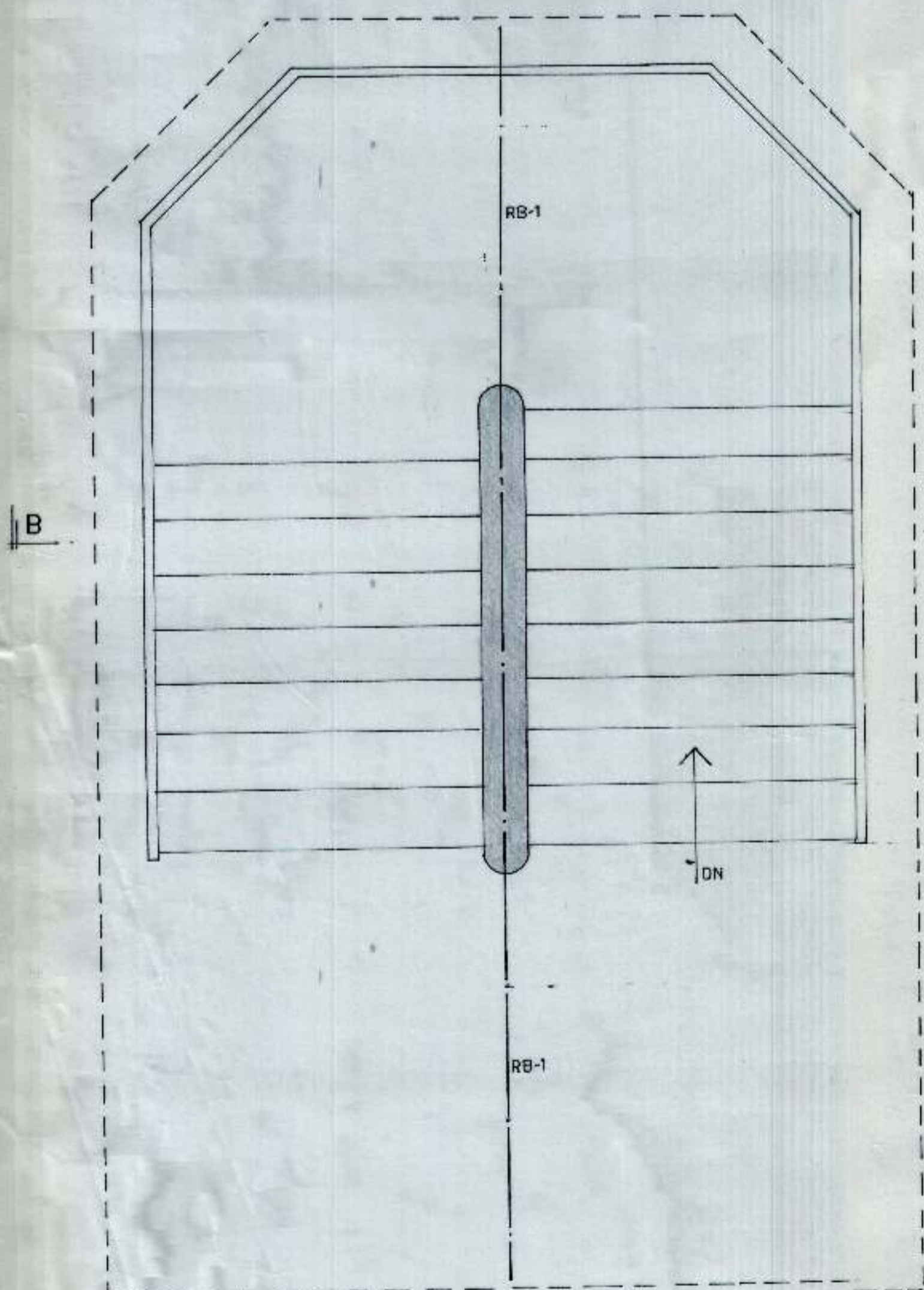
TITLE: "DETAILS OF SLAB & BEAMS
AT TERRACE LEVEL."

SCALE: 3/4" = 1'-0"	CHECKED BY: "
DEALT BY: " K.K.	DATED: " SEPT, 1996
JOB NO: " FS	DRG NO: " 08

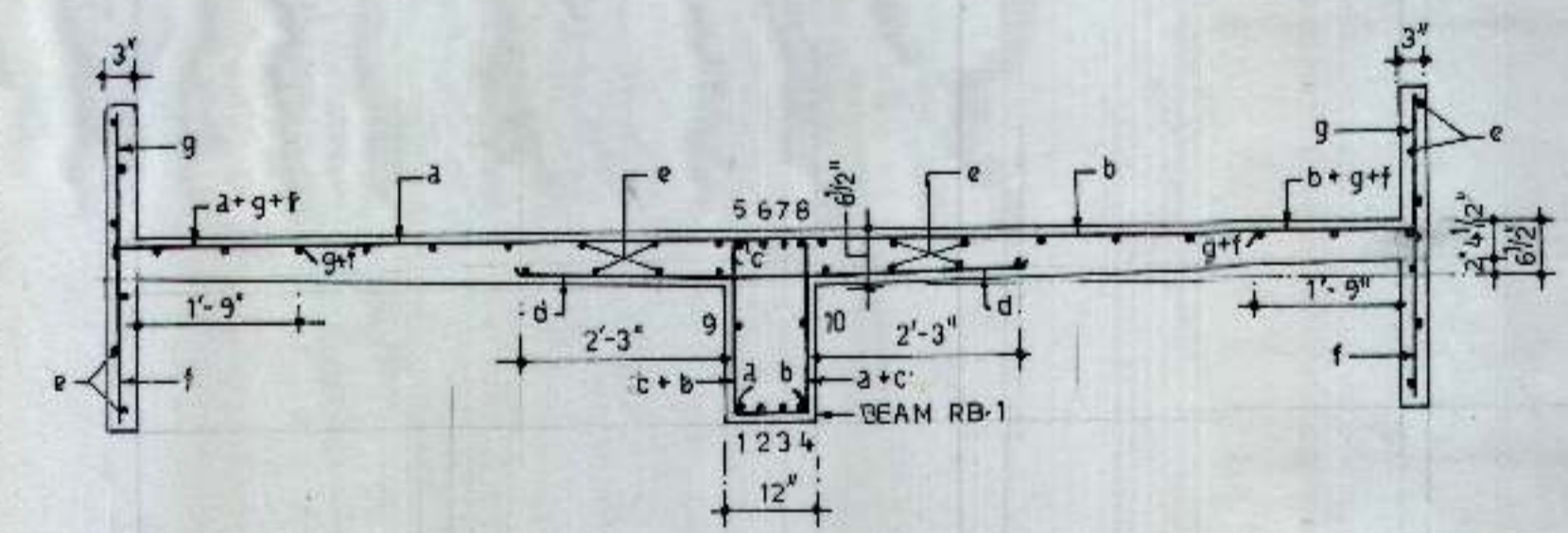
M.S.T. CONSULTANTS
S.C.F. 23, SECTOR - 16
CHANDIGARH

CLUSTER TYPE FOUR STOREY
HOUSE TYPE IV FOR P.G.I
SECTOR 12 - A
CHANDIGARH

NOTES :-
1. FOR STRUCTURAL NOTES REFER DRG NO. 01;
JOB NO. FS.



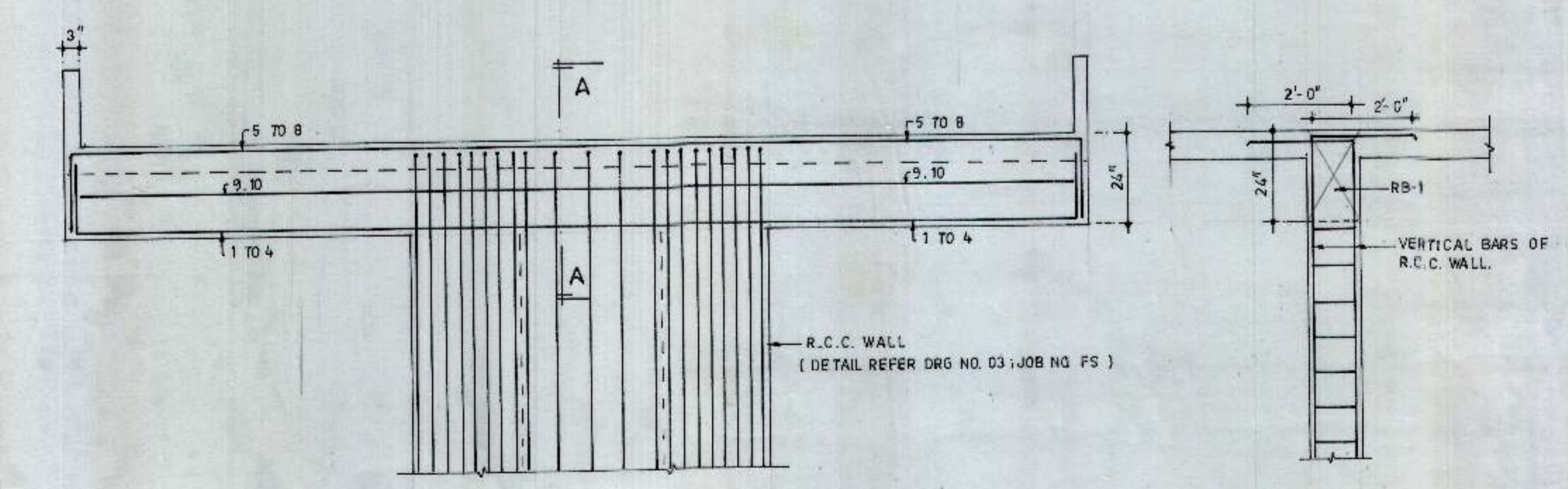
KEY PLAN



SECTION A - A

BARS IN BEAM RB-1	
1 TO 8	= 25 MM Φ
9, 10	= 12 MM Φ
STPS (c)	= 10 MM Φ 2 LEGGED @ 6" c/c.

BARS IN SLAB	
a, b	= 12 MM Φ @ 5" c/c
d	= 10 MM Φ @ 6" c/c
f, g, e	= 8 MM Φ @ 8" c/c



BEAM RB-1

SECTION A - A

CHANDIGARH
HOUSING BOARD

TITLE :-
DETAILS OF MUMTY

SCALE :- 1/2" = 1'-0"	CHECKED BY :-
DEALT BY :- K.K.	DATED :- NOV, 1996
JOB NO. :- FS	DRG NO. :- 09

M.S.T. CONSULTANTS
S.C.F. 23, SECTOR - 16
CHANDIGARH