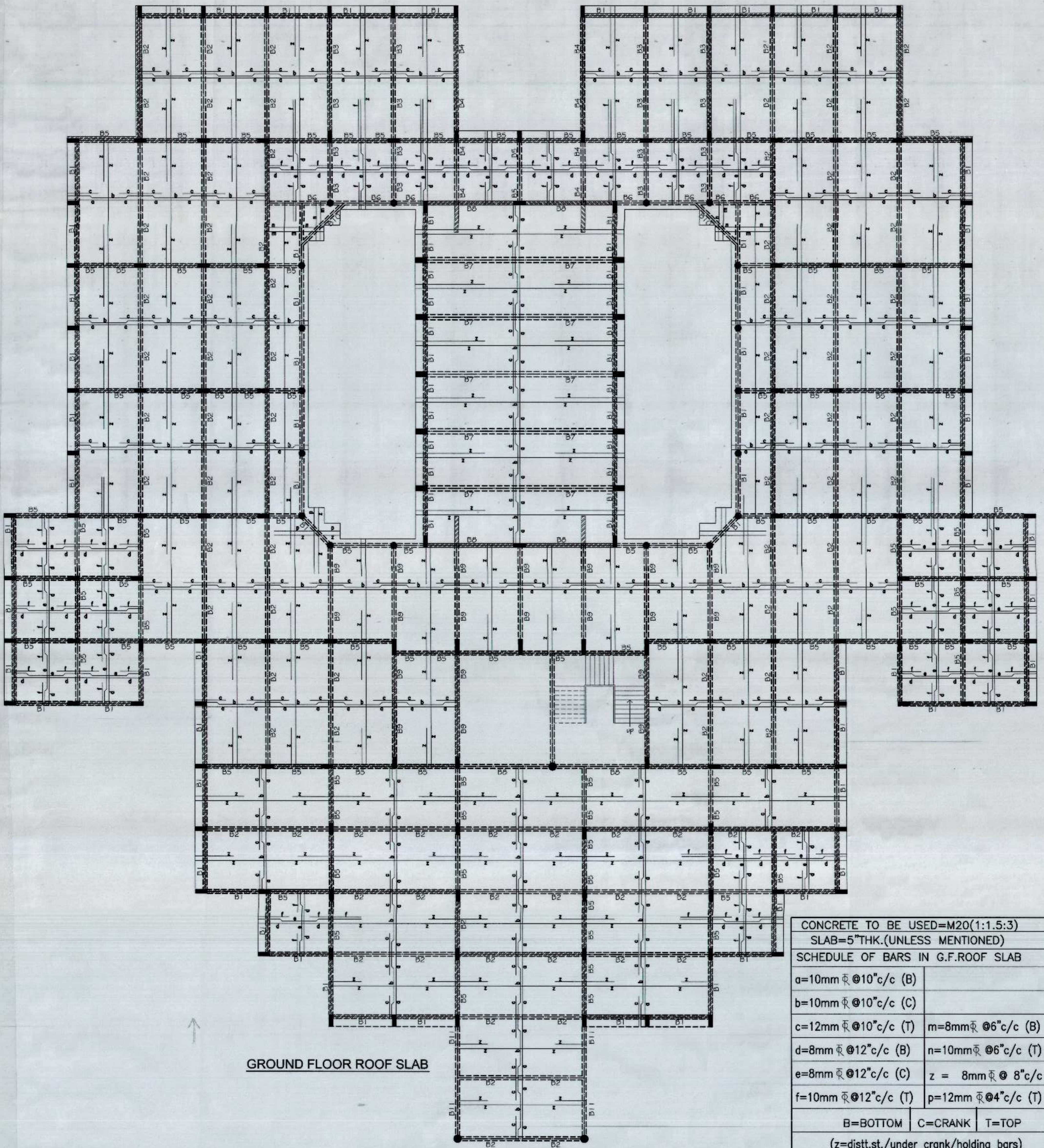


project: VOCATIONAL CENTRE MALOYA, CHANDIGARH ADMINISTRATION BLOCK sheet title: GROUND FLOOR ROOF SLAB BEAMS	Drawn By:	Dealt by:	structural consultants: CHOPRA CONSULTING ENGINEERS # 1076, sector-21B, Chandigarh phone: 09819443616, e-mail: pankajstr@hotmail.com
	MUKESH	MUKESH	
	Scale:	Date:	
	N.T.S	10.09.07	
	Project no:	Dwg no:	
	HD1		



GROUND FLOOR ROOF SLAB

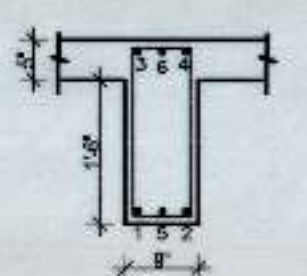
CONCRETE TO BE USED=M20(1:1.5:3)	
SLAB=5"THK.(UNLESS MENTIONED)	
SCHEDULE OF BARS IN G.F.ROOF SLAB	
a=10mm Φ @10"c/c (B)	
b=10mm Φ @10"c/c (C)	
c=12mm Φ @10"c/c (T)	m=8mm Φ @6"c/c (B)
d=8mm Φ @12"c/c (B)	n=10mm Φ @6"c/c (T)
e=8mm Φ @12"c/c (C)	z = 8mm Φ @ 8"c/c
f=10mm Φ @12"c/c (T)	p=12mm Φ @4"c/c (T)
B=BOTTOM C=CRANK T=TOP	
(z=distt.st./under crank/holding bars)	

BARS IN BEAM B1
 1 to 5 = 16mm Φ
 6 = 16mm Φ (extra at support)
 STPS 'A' :- 8mm Φ 8 Nos @ 4" c/c FROM SUPPORTS + rest @ 6" c/c

BARS IN BEAM B5
 1 to 5 = 16mm Φ
 6 = 20mm Φ (extra at support)
 STPS: - 'A'

BARS IN BEAM B8
 1 to 8 = 20mm Φ
 9,10 = 20mm Φ (extra at support)
 STPS: - 'B'

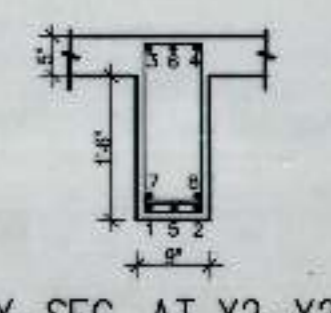
BARS IN BEAM B10
 1 to 6 = 20mm Φ
 STPS: - 'A'



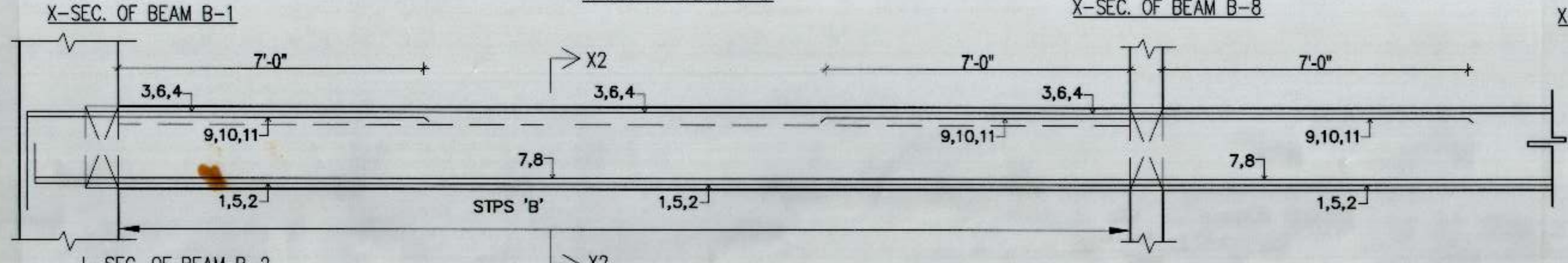
X-SEC. OF BEAM B-5

X-SEC. OF BEAM B-8

X-SEC. OF BEAM B-10



X-SEC. AT X2-X2



BARS IN BEAM B2
 1 TO 11 = 25mm Φ

STPS 'B' :- 8mm Φ 12 Nos @ 4" c/c FROM SUPPORTS + rest @ 6" c/c

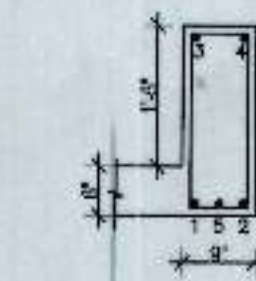
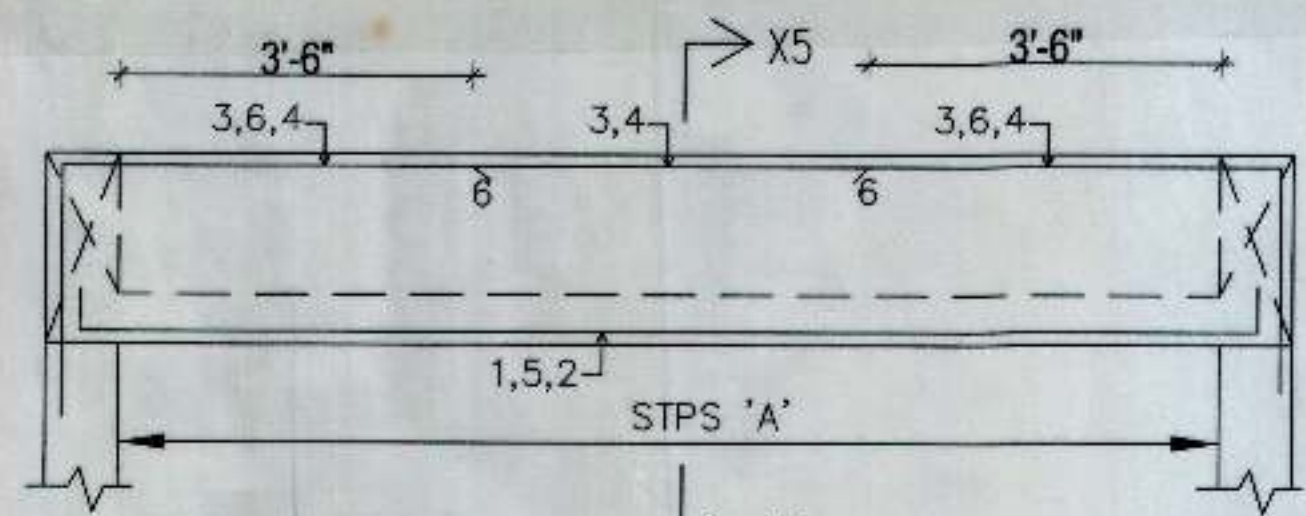
Revisions Note	project: VOCATIONAL CENTRE MALOYA, CHANDIGARH ADMINISTRATION BLOCK	Drawn by: MUKESH	Desd by: MUKESH	structural consultant: CHOPRA CONSULTING ENGINEERS
	sheet title: GROUND FLOOR ROOF SLAB	Scale: N.T.S	Date: 10.09.07	# 1076, sector-21B, chandigarh phone: 0981543616, e-mail: pankajstr@hotmail.com
		Project no: HB1	Dwg no:	

SCHEDULE OF COLUMNS

COL. NO.	GROUND TO FIRST FLOOR			FIRST TO THIRD FLOOR			THIRD TO TERRACE		
	SHAPE	MAIN VERT. STEEL	TIES	SHAPE	MAIN VERT. STEEL	TIES	SHAPE	MAIN VERT. STEEL	TIES
C1		1T04=16mm $\bar{\Phi}$ 5T010=12mm $\bar{\Phi}$	T1:-8mm $\bar{\Phi}$ 4 $\bar{\Phi}$ c/c (2 SETS) T2:-8mm $\bar{\Phi}$ 8 $\bar{\Phi}$ c/c (2 SETS)						
C2		1T010=20mm $\bar{\Phi}$	T1:-8mm $\bar{\Phi}$ 4 $\bar{\Phi}$ c/c (2 SETS) T2:-8mm $\bar{\Phi}$ 8 $\bar{\Phi}$ c/c (2 SETS)		1T06=20mm $\bar{\Phi}$ 7T010=16mm $\bar{\Phi}$	T1:-8mm $\bar{\Phi}$ 4 $\bar{\Phi}$ c/c (2 SETS) T2:-8mm $\bar{\Phi}$ 8 $\bar{\Phi}$ c/c (2 SETS)		1T04=20mm $\bar{\Phi}$ 5T010=16mm $\bar{\Phi}$	T1:-8mm $\bar{\Phi}$ 4 $\bar{\Phi}$ c/c (2 SETS) T2:-8mm $\bar{\Phi}$ 8 $\bar{\Phi}$ c/c (2 SETS)
C3		1T010=20mm $\bar{\Phi}$	T1:-8mm $\bar{\Phi}$ 4 $\bar{\Phi}$ c/c (2 SETS) T2:-8mm $\bar{\Phi}$ 8 $\bar{\Phi}$ c/c (2 SETS)		1T06=20mm $\bar{\Phi}$ 7T010=16mm $\bar{\Phi}$	T1:-8mm $\bar{\Phi}$ 4 $\bar{\Phi}$ c/c (2 SETS) T2:-8mm $\bar{\Phi}$ 8 $\bar{\Phi}$ c/c (2 SETS)		1T04=20mm $\bar{\Phi}$ 5T010=16mm $\bar{\Phi}$	T1:-8mm $\bar{\Phi}$ 4 $\bar{\Phi}$ c/c (2 SETS) T2:-8mm $\bar{\Phi}$ 8 $\bar{\Phi}$ c/c (2 SETS)
C4		1T010=16mm $\bar{\Phi}$	T1:-8mm $\bar{\Phi}$ 4 $\bar{\Phi}$ c/c (2 SETS) T2:-8mm $\bar{\Phi}$ 8 $\bar{\Phi}$ c/c (2 SETS)		1T010=16mm $\bar{\Phi}$	T1:-8mm $\bar{\Phi}$ 4 $\bar{\Phi}$ c/c (2 SETS) T2:-8mm $\bar{\Phi}$ 8 $\bar{\Phi}$ c/c (2 SETS)		1T010=16mm $\bar{\Phi}$	T1:-8mm $\bar{\Phi}$ 4 $\bar{\Phi}$ c/c (2 SETS) T2:-8mm $\bar{\Phi}$ 8 $\bar{\Phi}$ c/c (2 SETS)
C5		1T010=25mm $\bar{\Phi}$	T1:-8mm $\bar{\Phi}$ 4 $\bar{\Phi}$ c/c (2 SETS) T2:-8mm $\bar{\Phi}$ 8 $\bar{\Phi}$ c/c (2 SETS)		1T010=25mm $\bar{\Phi}$	T1:-8mm $\bar{\Phi}$ 4 $\bar{\Phi}$ c/c (2 SETS) T2:-8mm $\bar{\Phi}$ 8 $\bar{\Phi}$ c/c (2 SETS)		1T04=25mm $\bar{\Phi}$ 5T010=20mm $\bar{\Phi}$	T1:-8mm $\bar{\Phi}$ 4 $\bar{\Phi}$ c/c (2 SETS) T2:-8mm $\bar{\Phi}$ 8 $\bar{\Phi}$ c/c (2 SETS)
C6		1T010=16mm $\bar{\Phi}$	T1:-8mm $\bar{\Phi}$ 4 $\bar{\Phi}$ c/c (2 SETS) T2:-8mm $\bar{\Phi}$ 8 $\bar{\Phi}$ c/c (2 SETS)		1T010=16mm $\bar{\Phi}$	T1:-8mm $\bar{\Phi}$ 4 $\bar{\Phi}$ c/c (2 SETS) T2:-8mm $\bar{\Phi}$ 8 $\bar{\Phi}$ c/c (2 SETS)		1T010=16mm $\bar{\Phi}$	T1:-8mm $\bar{\Phi}$ 4 $\bar{\Phi}$ c/c (2 SETS) T2:-8mm $\bar{\Phi}$ 8 $\bar{\Phi}$ c/c (2 SETS)
C7		1T04=20mm $\bar{\Phi}$ 5T010=16mm $\bar{\Phi}$	T1:-8mm $\bar{\Phi}$ 4 $\bar{\Phi}$ c/c (2 SETS) T2:-8mm $\bar{\Phi}$ 8 $\bar{\Phi}$ c/c (2 SETS)		1T04=20mm $\bar{\Phi}$ 5T010=16mm $\bar{\Phi}$	T1:-8mm $\bar{\Phi}$ 4 $\bar{\Phi}$ c/c (2 SETS) T2:-8mm $\bar{\Phi}$ 8 $\bar{\Phi}$ c/c (2 SETS)		1T010=16mm $\bar{\Phi}$	T1:-8mm $\bar{\Phi}$ 4 $\bar{\Phi}$ c/c (2 SETS) T2:-8mm $\bar{\Phi}$ 8 $\bar{\Phi}$ c/c (2 SETS)
C2A		1T04=25mm $\bar{\Phi}$ 5T010=20mm $\bar{\Phi}$	T1:-8mm $\bar{\Phi}$ 4 $\bar{\Phi}$ c/c (2 SETS) T2:-8mm $\bar{\Phi}$ 8 $\bar{\Phi}$ c/c (2 SETS)		1T04=25mm $\bar{\Phi}$ 5T010=20mm $\bar{\Phi}$	T1:-8mm $\bar{\Phi}$ 4 $\bar{\Phi}$ c/c (2 SETS) T2:-8mm $\bar{\Phi}$ 8 $\bar{\Phi}$ c/c (2 SETS)		1T010=20mm $\bar{\Phi}$	T1:-8mm $\bar{\Phi}$ 4 $\bar{\Phi}$ c/c (2 SETS) T2:-8mm $\bar{\Phi}$ 8 $\bar{\Phi}$ c/c (2 SETS)
C4A		1T010=20mm $\bar{\Phi}$	T1:-8mm $\bar{\Phi}$ 4 $\bar{\Phi}$ c/c (2 SETS) T2:-8mm $\bar{\Phi}$ 8 $\bar{\Phi}$ c/c (2 SETS)		1T010=20mm $\bar{\Phi}$	T1:-8mm $\bar{\Phi}$ 4 $\bar{\Phi}$ c/c (2 SETS) T2:-8mm $\bar{\Phi}$ 8 $\bar{\Phi}$ c/c (2 SETS)		1T04=20mm $\bar{\Phi}$ 5T010=16mm $\bar{\Phi}$	T1:-8mm $\bar{\Phi}$ 4 $\bar{\Phi}$ c/c (2 SETS) T2:-8mm $\bar{\Phi}$ 8 $\bar{\Phi}$ c/c (2 SETS)

Revisions	Note	Date & Time

project: VOCATIONAL CENTRE MALOYA, CHANDIGARH RESIDENTIAL BLOCK	Drawn By: MUKESH	Dept by: MUKESH	structural consultants: CHOPRA CONSULTING ENGINEERS # 1076, sector-21B, chandigarh phone: 09815443616, e-mail: pankajstr@hotmail.com
sheet title: FOUNDATION PLAN & DETAILS	Scale: N.T.S	Date: 10.09.07	Project no: HB1
		Dig no: 52	

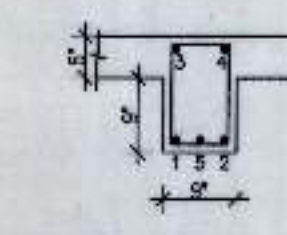
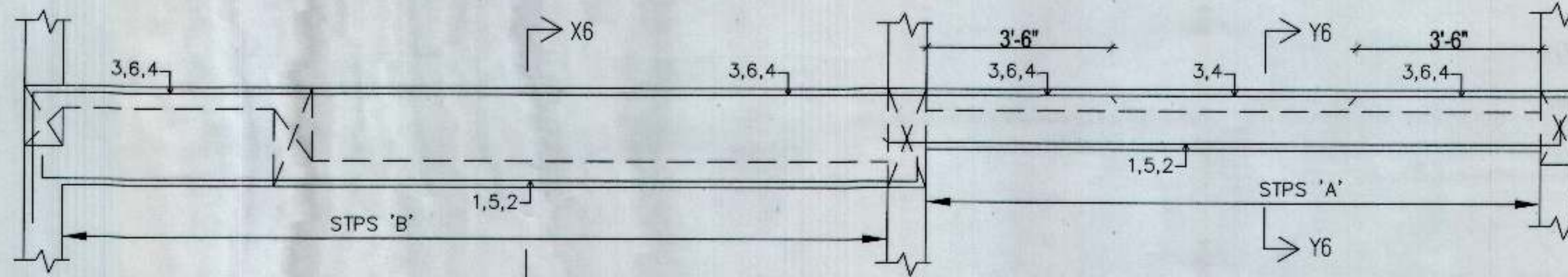


X-SEC. AT X5-X5

L-SEC. OF BEAM B-5

BARS IN BEAM B5
1,2,3,4 = 16mm $\bar{\bar{}}$
5,6 = 20mm $\bar{\bar{}}$

STPS 'A' :- 8mm $\bar{\bar{}}$ 8 Nos @ 4" c/c FROM SUPPORTS + rest @ 6" c/c

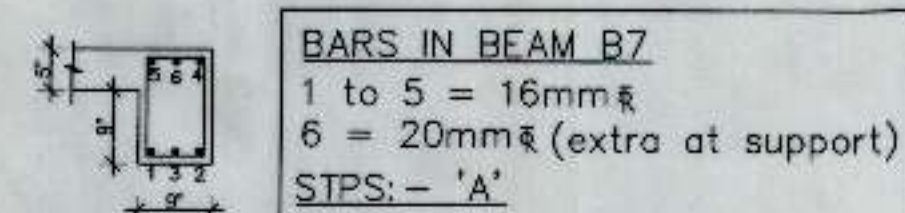


X-SEC. AT Y6-Y6

L-SEC. OF BEAM B-6

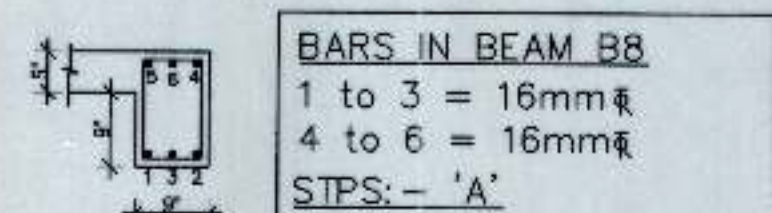
BARS IN BEAM B6
1 to 6 = 25mm $\bar{\bar{}}$

STPS 'B' :- 8mm $\bar{\bar{}}$ 12 Nos @ 4" c/c FROM SUPPORTS + rest @ 6" c/c



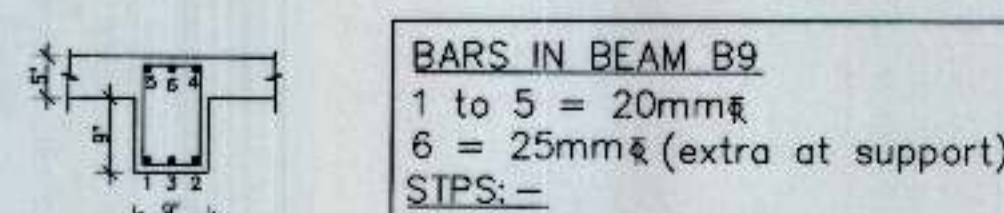
X-SEC. OF BEAM B-7

BARS IN BEAM B7
1 to 5 = 16mm $\bar{\bar{}}$
6 = 20mm $\bar{\bar{}}$ (extra at support)
STPS: - 'A'



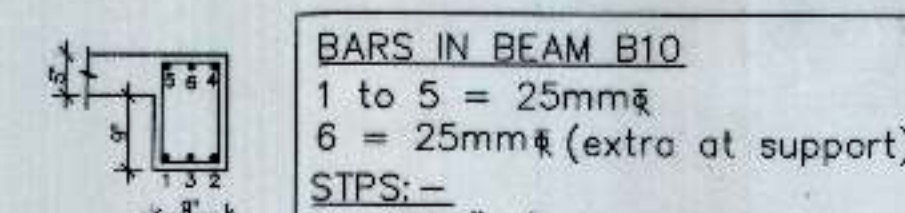
X-SEC. OF BEAM B-8

BARS IN BEAM B8
1 to 3 = 16mm $\bar{\bar{}}$
4 to 6 = 16mm $\bar{\bar{}}$
STPS: - 'A'



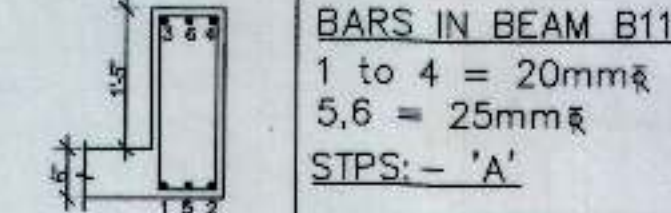
X-SEC. OF BEAM B-9

BARS IN BEAM B9
1 to 5 = 20mm $\bar{\bar{}}$
6 = 25mm $\bar{\bar{}}$ (extra at support)
STPS: -
8mm $\bar{\bar{}}$ @4" c/c throughout



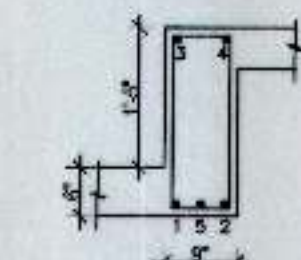
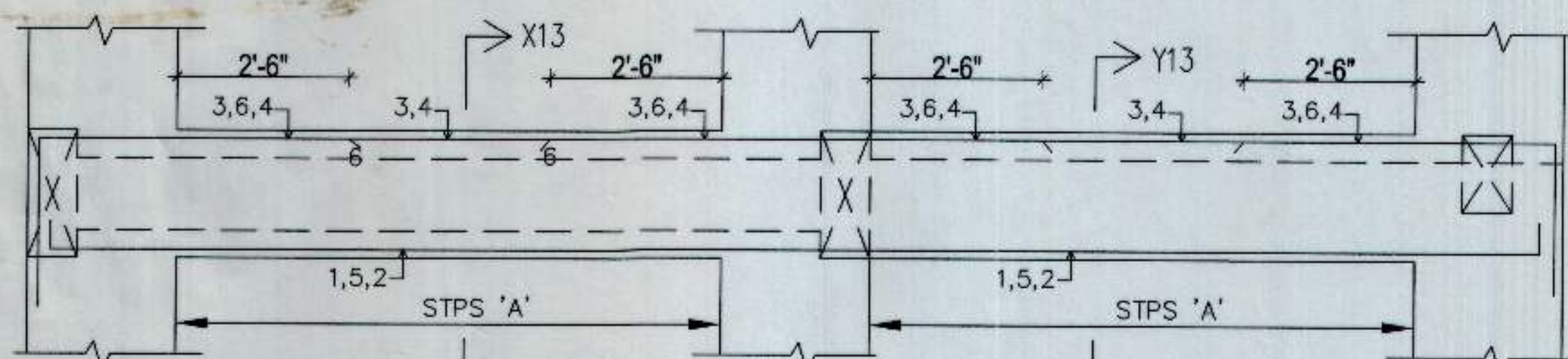
X-SEC. OF BEAM B-10

BARS IN BEAM B10
1 to 5 = 25mm $\bar{\bar{}}$
6 = 25mm $\bar{\bar{}}$ (extra at support)
STPS: -
8mm $\bar{\bar{}}$ @4" c/c throughout

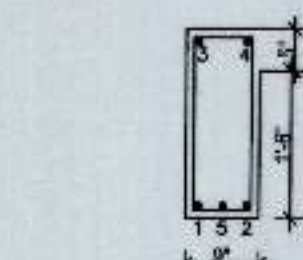


X-SEC. OF BEAM B-11

BARS IN BEAM B11
1 to 4 = 20mm $\bar{\bar{}}$
5,6 = 25mm $\bar{\bar{}}$
STPS: - 'A'



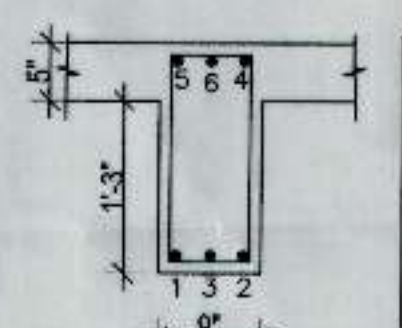
X-SEC. AT X13-X13



X-SEC. AT Y13-Y13

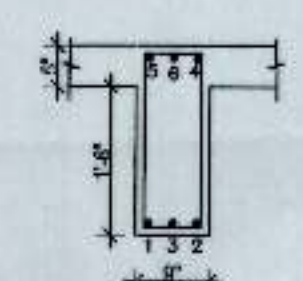
L-SEC. OF BEAM B-13

BARS IN BEAM B13
1,2,3,4 = 20mm $\bar{\bar{}}$
5,6 = 20mm $\bar{\bar{}}$



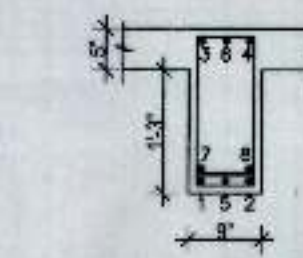
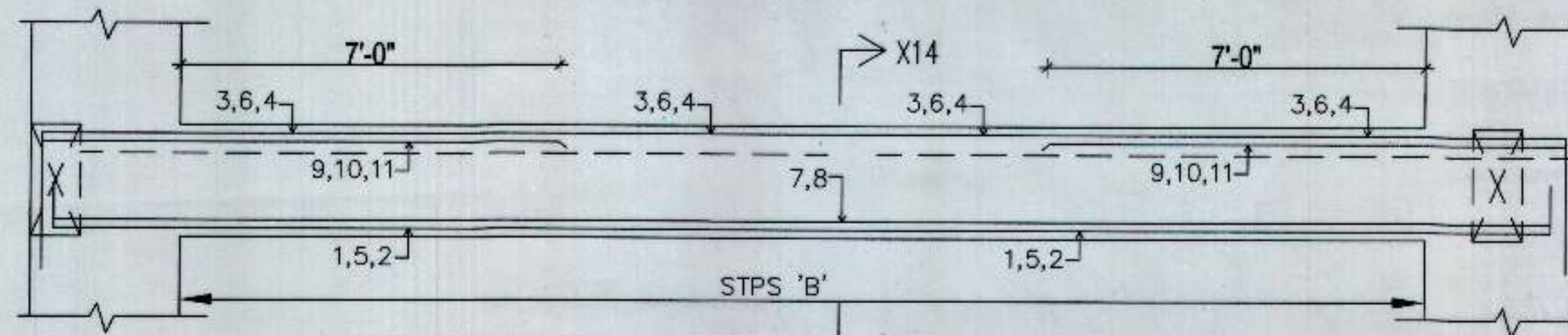
X-SEC. OF BEAM B-15

BARS IN BEAM B15
1 to 5 = 16mm $\bar{\bar{}}$
6 = 20mm $\bar{\bar{}}$ (extra at support)
STPS: - 'A'



X-SEC. OF BEAM B-12

BARS IN BEAM B12
1 to 6 = 25mm $\bar{\bar{}}$
STPS: -
10mm $\bar{\bar{}}$ @5" c/c throughout



X-SEC. AT X14-X14

L-SEC. OF BEAM B-14

BARS IN BEAM B14
1 TO 11 = 25mm $\bar{\bar{}}$

STPS 'B' :- 8mm $\bar{\bar{}}$ 12 Nos @ 4" c/c FROM SUPPORTS + rest @ 6" c/c

Revisions	Note	Date & Time

Project:
VOCATIONAL CENTRE MALOYA,
CHANDIGARH
RESIDENTIAL BLOCK

Sheet title:
GROUND FLOOR ROOF SLAB & BEAM DETAILS

Drawn By:
MUKESH

Scale:
N.T.S

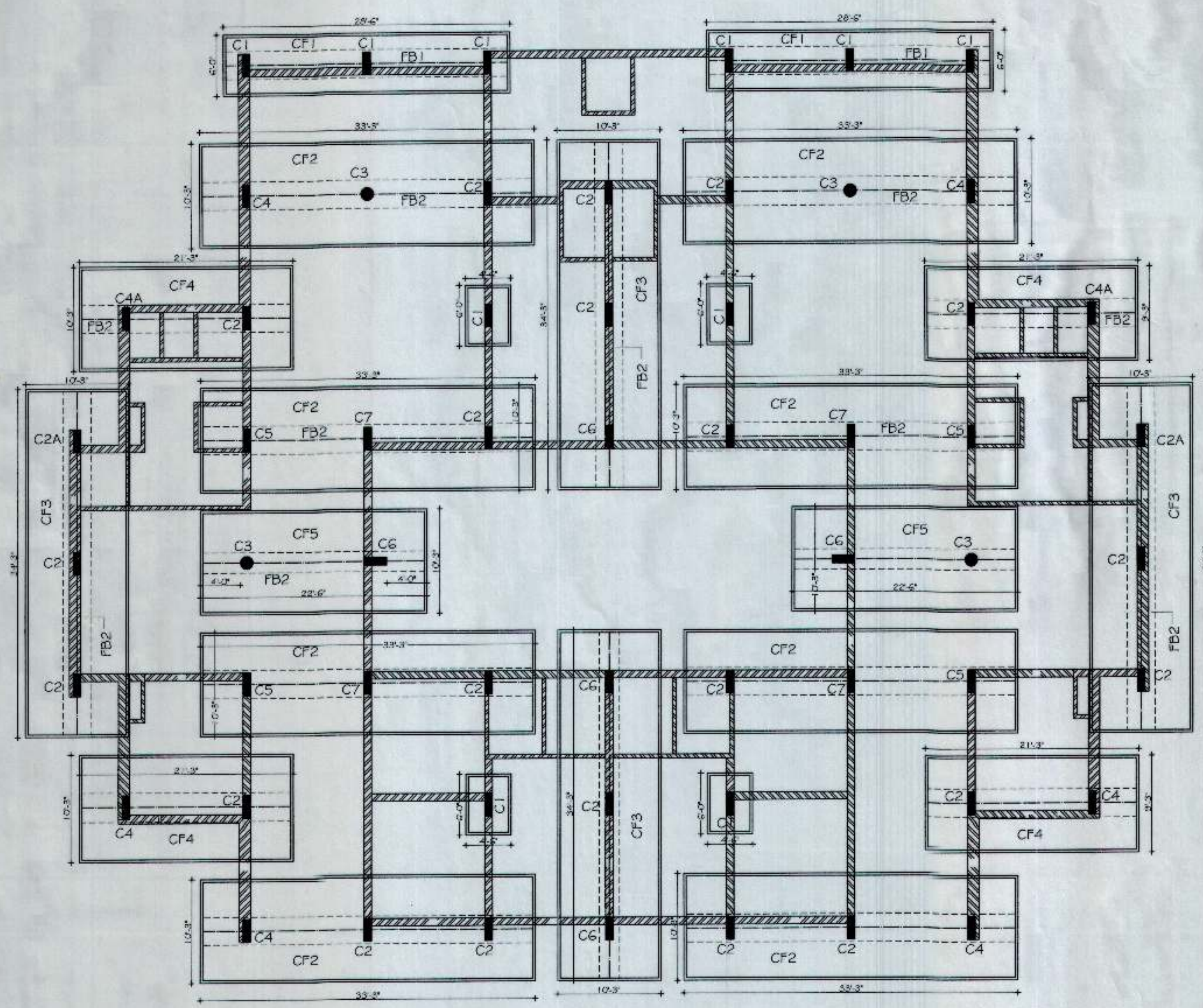
Project no:
HB1

Deal by:
MUKESH

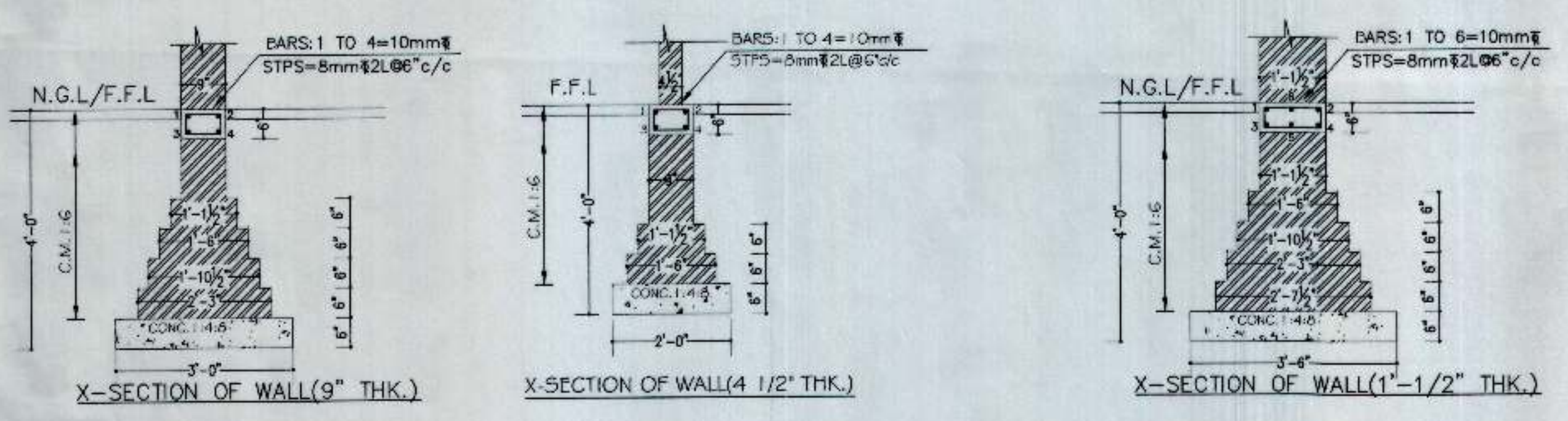
Date:
10.09.07

Dwg no:
54

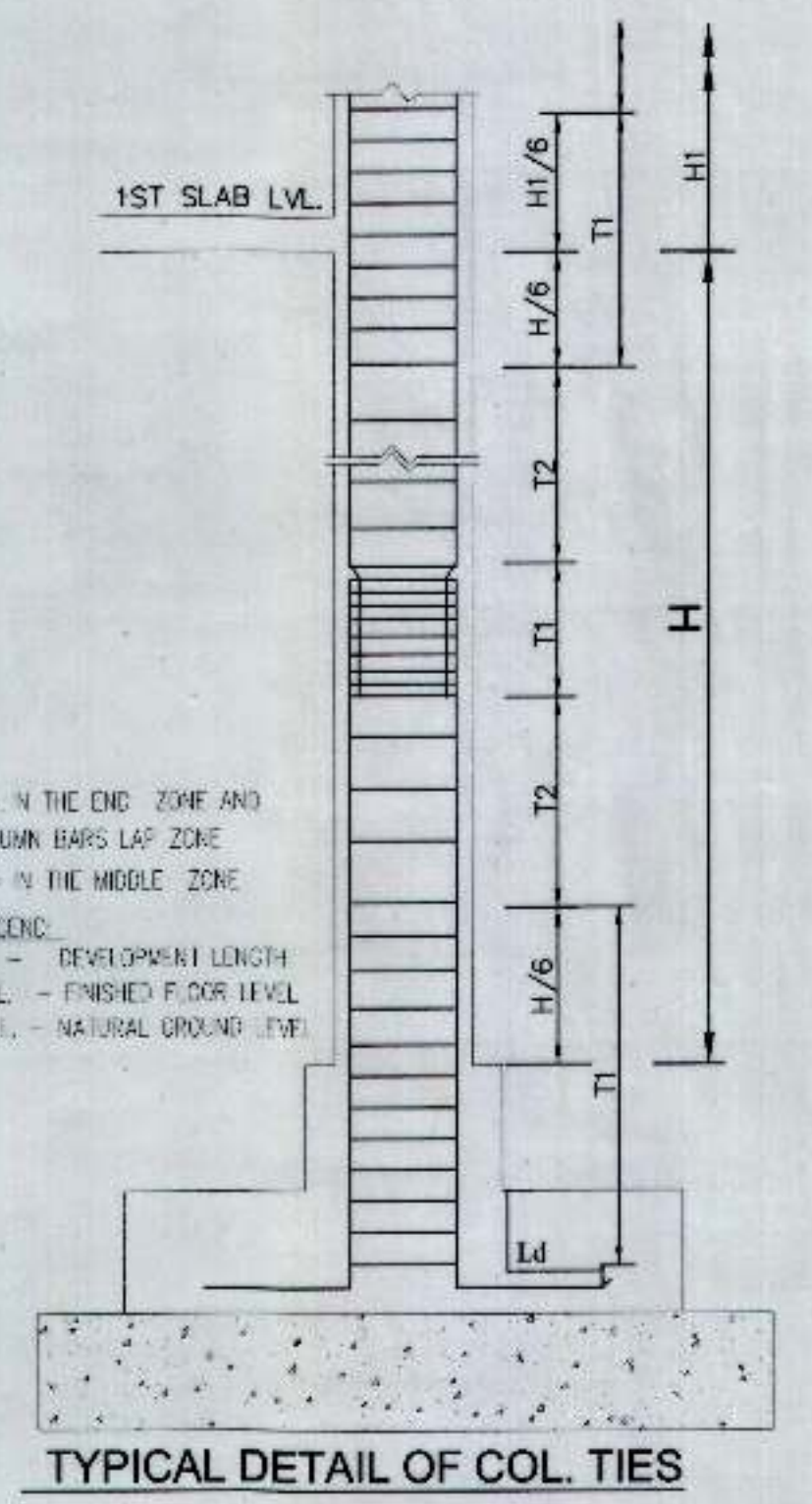
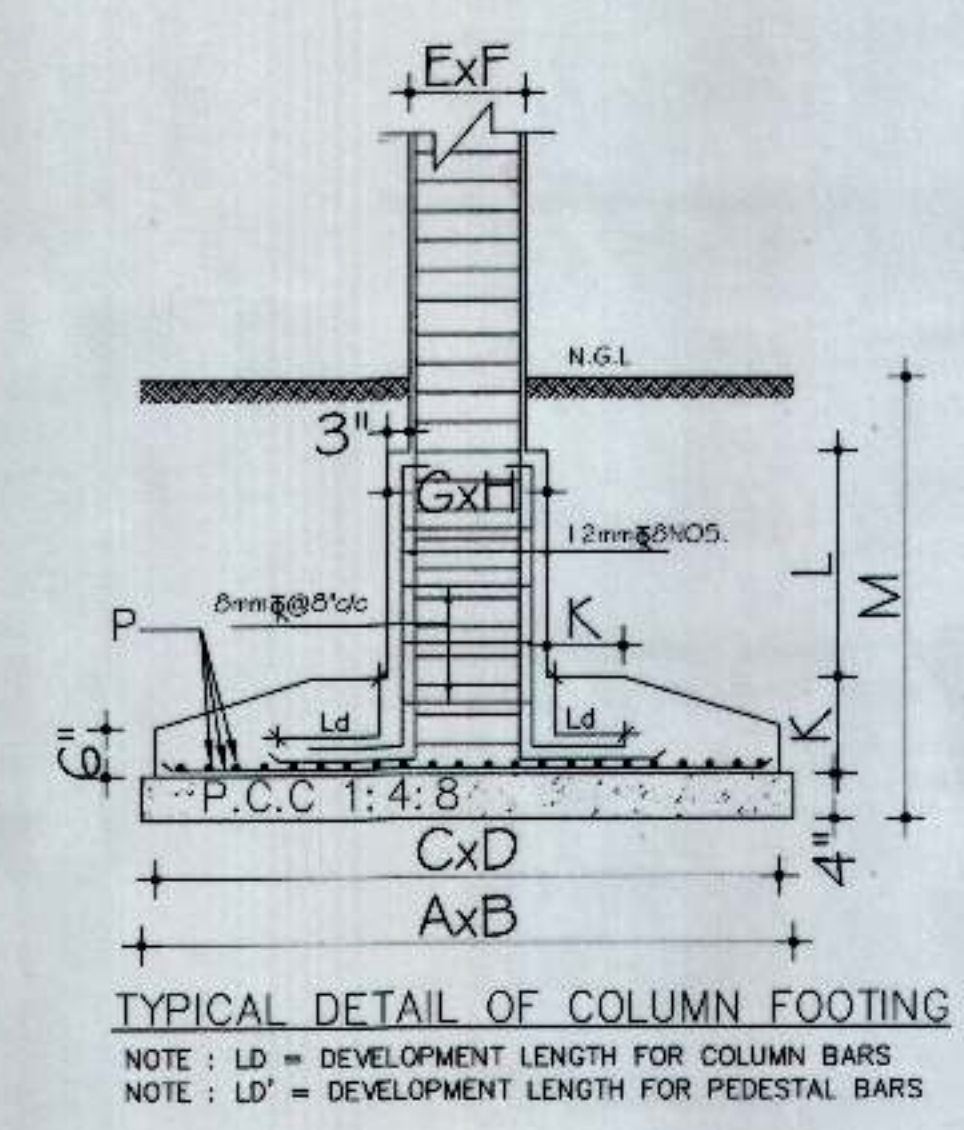
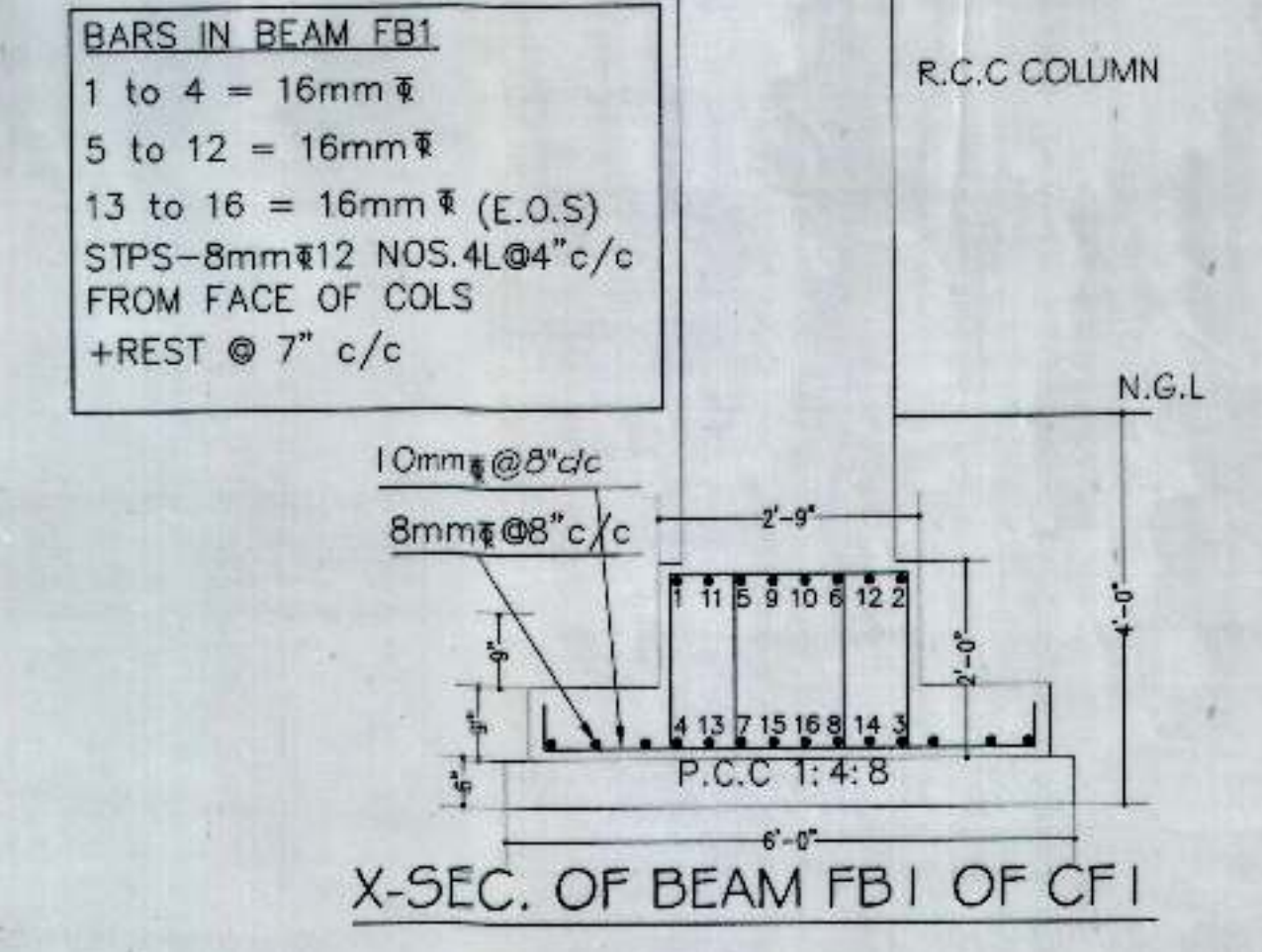
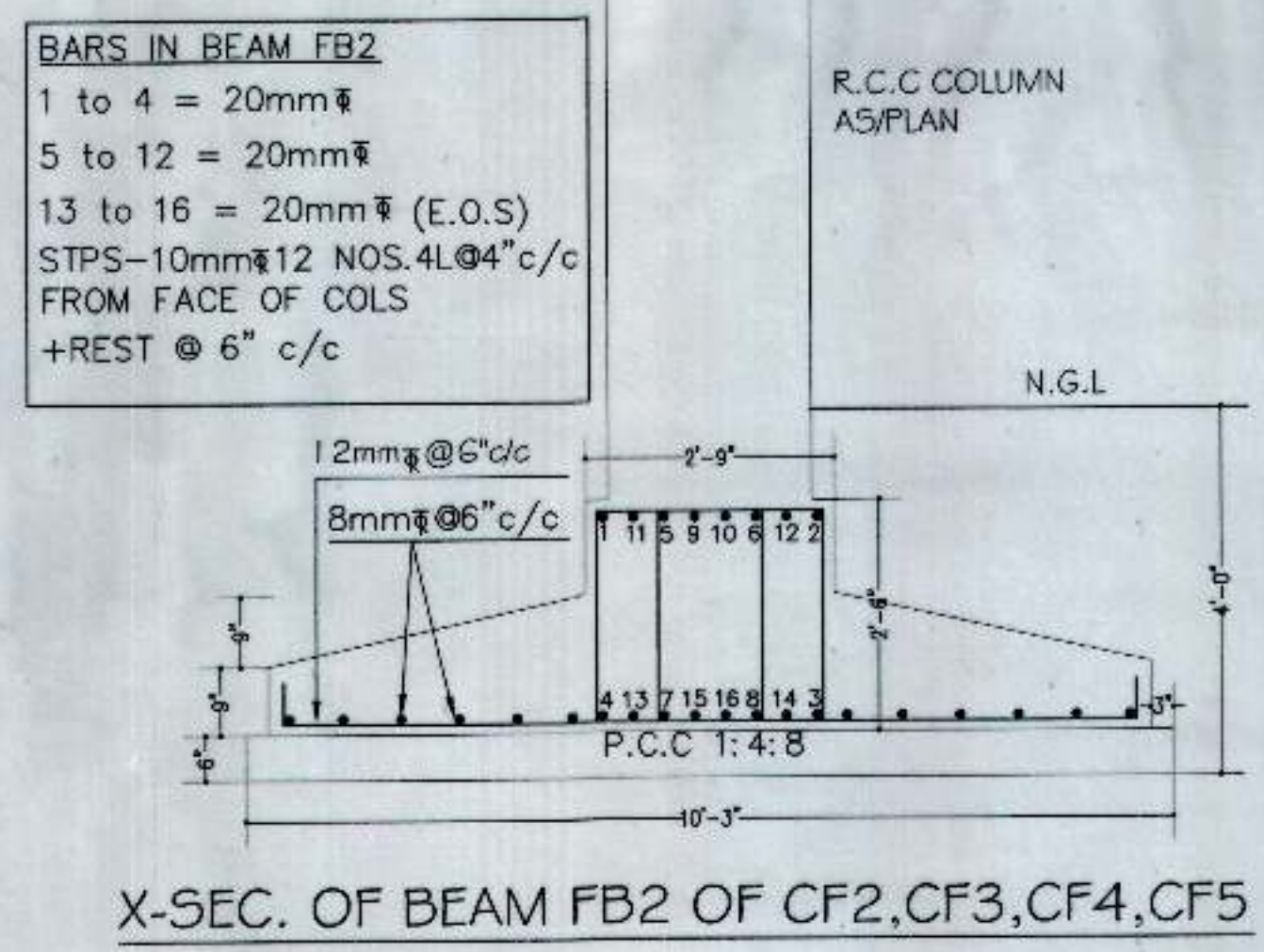
structural consultants:
CHOPRA CONSULTING ENGINEERS
1076, sector-21B, Chandigarh
phone: 09815443616,
e-mail: pankajstr@hotmail.com



FOUNDATION EXCAVATION & KEY PLAN



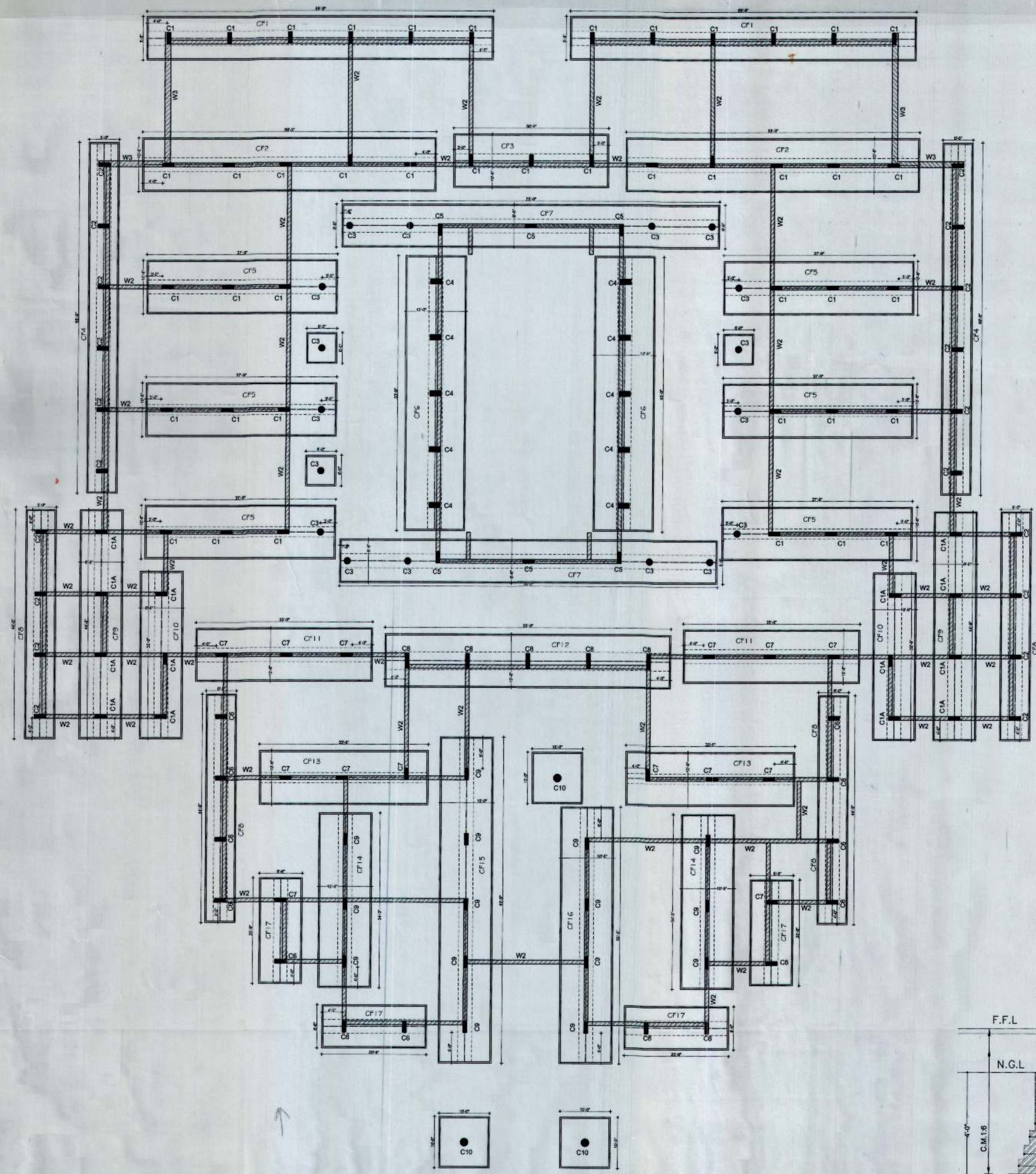
DETAIL OF COLUMNS FOOTING												
COLUMN NO.	A	B	C	D	E	F	G	H	K	L	M	P
C1	4'-6"	6'-0"	4'-0"	5'-6"	9"	27"	15"	33"	12"	9"	4'-0"	10mm ϕ @6" c/c BOTHWAYS



- GENERAL NOTES.**
- All dimensions to be read and not to be scaled off.
 - For center line dimensions refer arch. drgs.
 - ϕ indicates dia of HYSD/TMT bars of grade Fe- 415 conforming to I.S. 479-1979
 - Contractor is to check all dimensions before execution of work.
 - Clear cover to Reinf. Foundation = 2 1/2", Column = 1 1/2", beam = 1", slab = 3/4".
 - Lap/Anchorage length Column = 47d, Beam & Slab = 58d where d is dia of bars.
 - Note more than 50% bars to be lapped at one location.
 - Conc. to be used M-20
 - Safe Bearing Capacity of soil = 8 T/sq.m
 - E.O.S means extra bars at column supports to extend 0.3L from the face of the column where 'L' is the centre to centre distance between columns

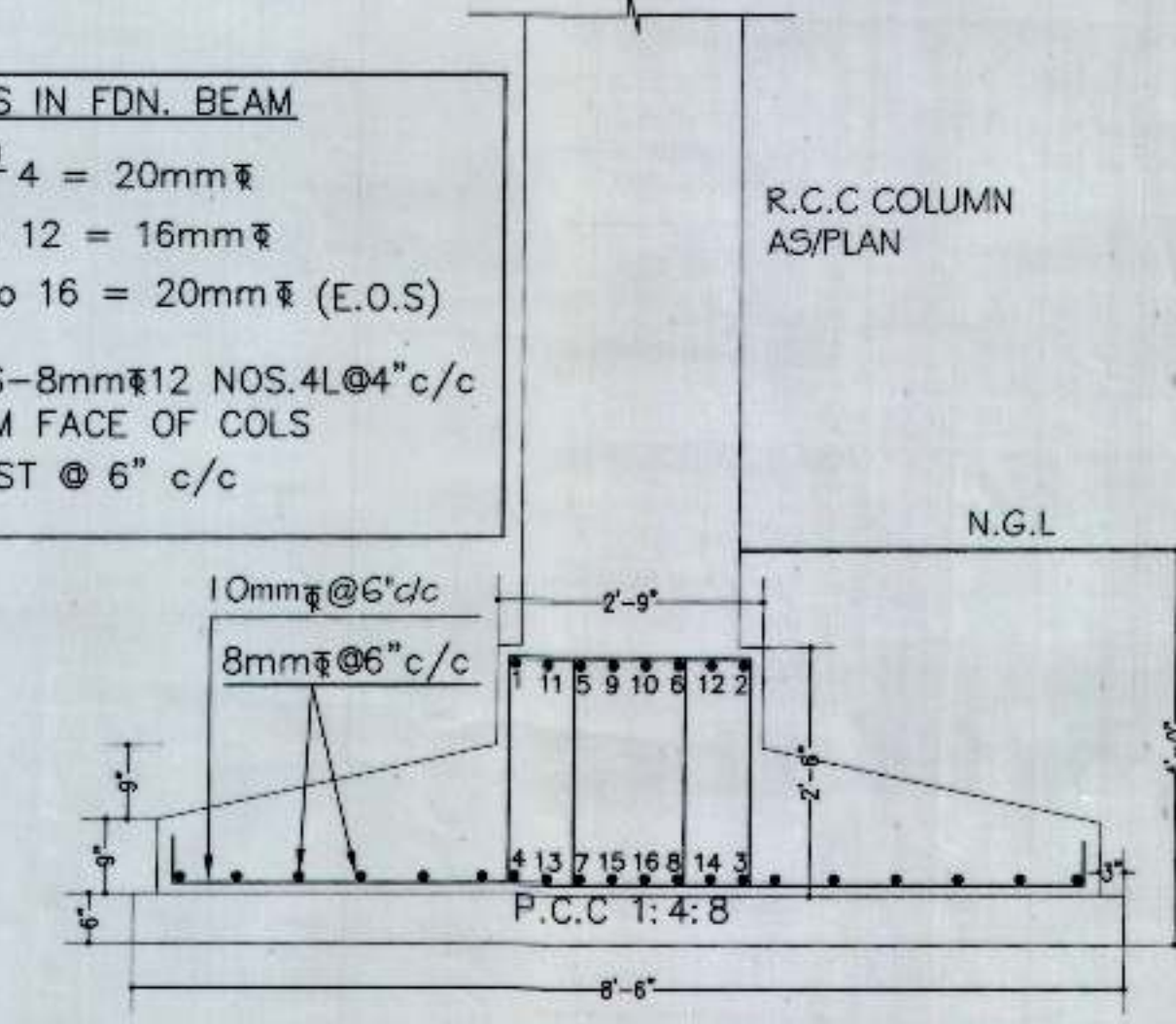
GENERAL NOTES.

1. All dimensions to be read and not to be scaled off.
2. For center line dimensions refer arch. drgs.
3. \varnothing indicates dia of HYSD/TMT bars of grade Fe- 415 conforming to I.S. 479-1979
4. Contractor is to check all dimensions before execution of work.
5. Clear cover to Reinf. Foundation = 2 1/2", Column = 1 1/2", beam = 1", slab = 3/4".
6. Lap/Anchorage length Column = 47d, Beam & Slab = 58d where d is dia of bars.
7. Note more than 50% bars to be lapped at one location.
8. Conc. to be used M-20
9. Safe Bearing Capacity of soil = 8 T/sq.m
10. E.O.S means extra bars at column supports to extend 0.3L from the face of the column where 'L' is the centre to centre distance between columns



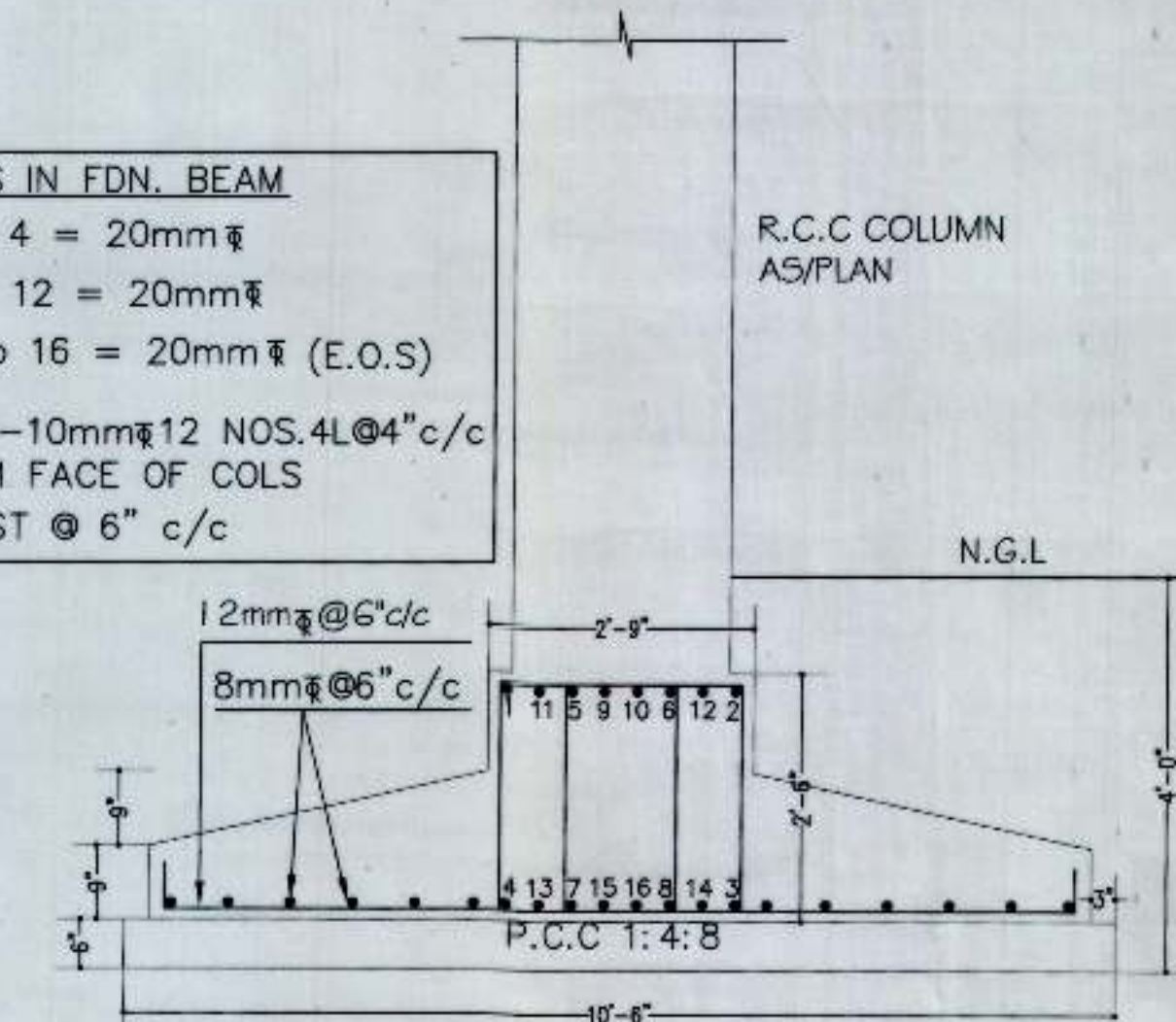
FOUNDATION EXCAVATION & KEY PLAN

BARS IN FDN. BEAM
 EB10
 1 to 4 = 20mm \varnothing
 5 to 12 = 16mm \varnothing
 13 to 16 = 20mm \varnothing (E.O.S)
 STPS-8mm \varnothing 12 NOS. 4L @ 4" c/c
 FROM FACE OF COLS
 +REST @ 6" c/c

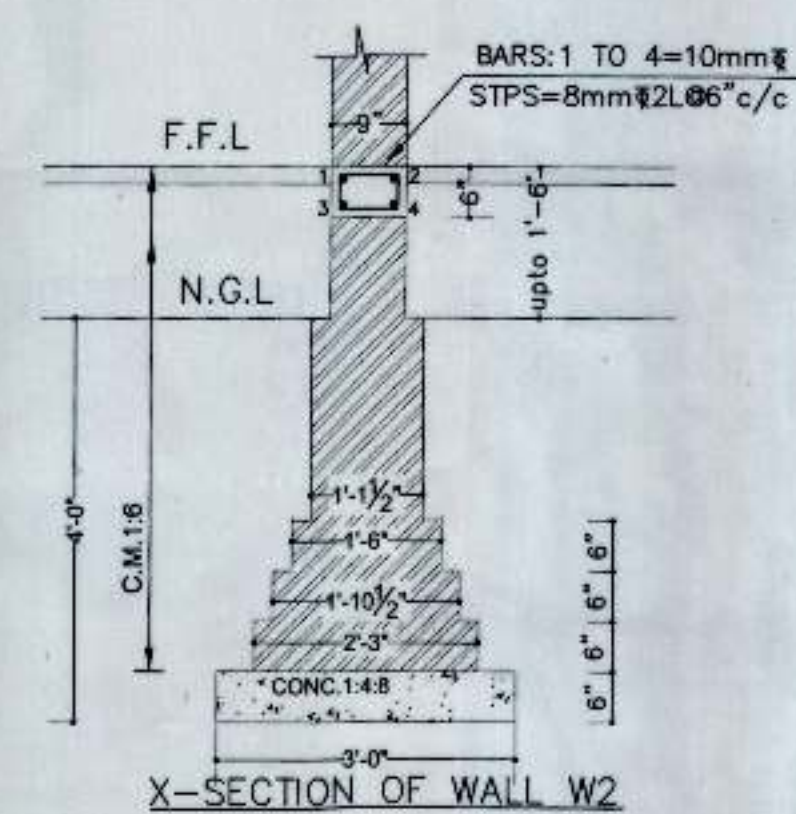


X-SEC. OF FDN. BEAM FOR COMBINED FOOTINGS CF1, CF7, CF9, CF10, CF17

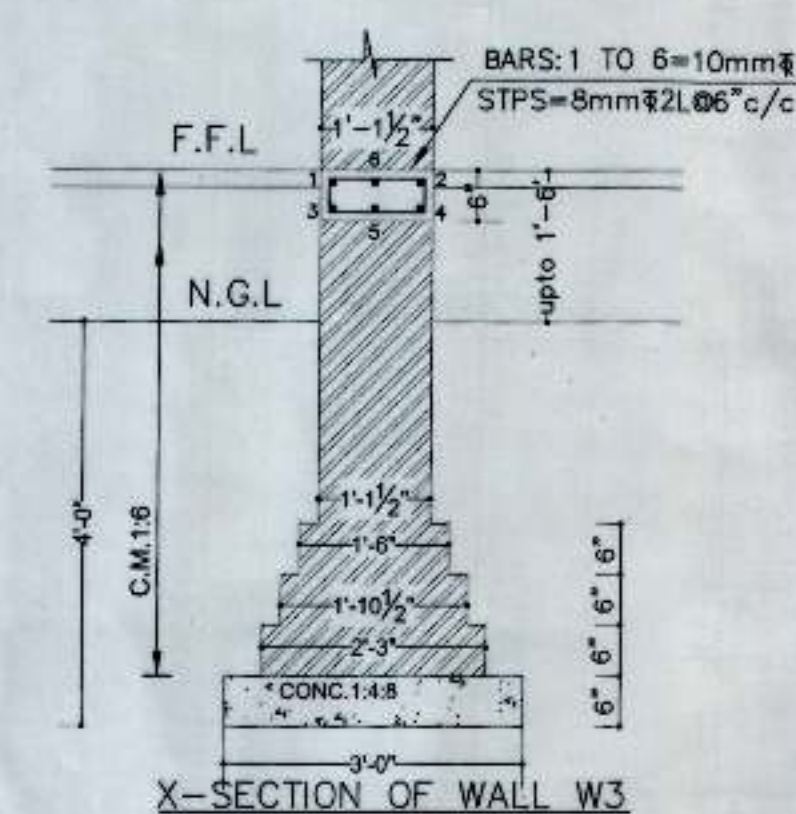
BARS IN FDN. BEAM
 1 to 4 = 20mm \varnothing
 5 to 12 = 20mm \varnothing
 13 to 16 = 20mm \varnothing (E.O.S)
 STPS-10mm \varnothing 12 NOS. 4L @ 4" c/c
 FROM FACE OF COLS
 +REST @ 6" c/c



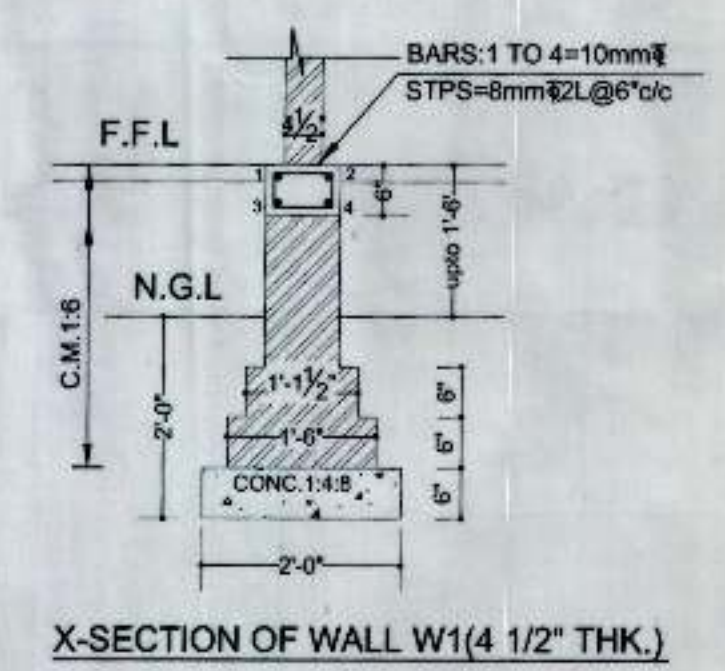
X-SEC. OF FDN. BEAM FOR COMBINED FOOTINGS CF2, CF3, CF5, CF11, CF13, CF14, CF15, CF16



X-SECTION OF WALL W2



X-SECTION OF WALL W3



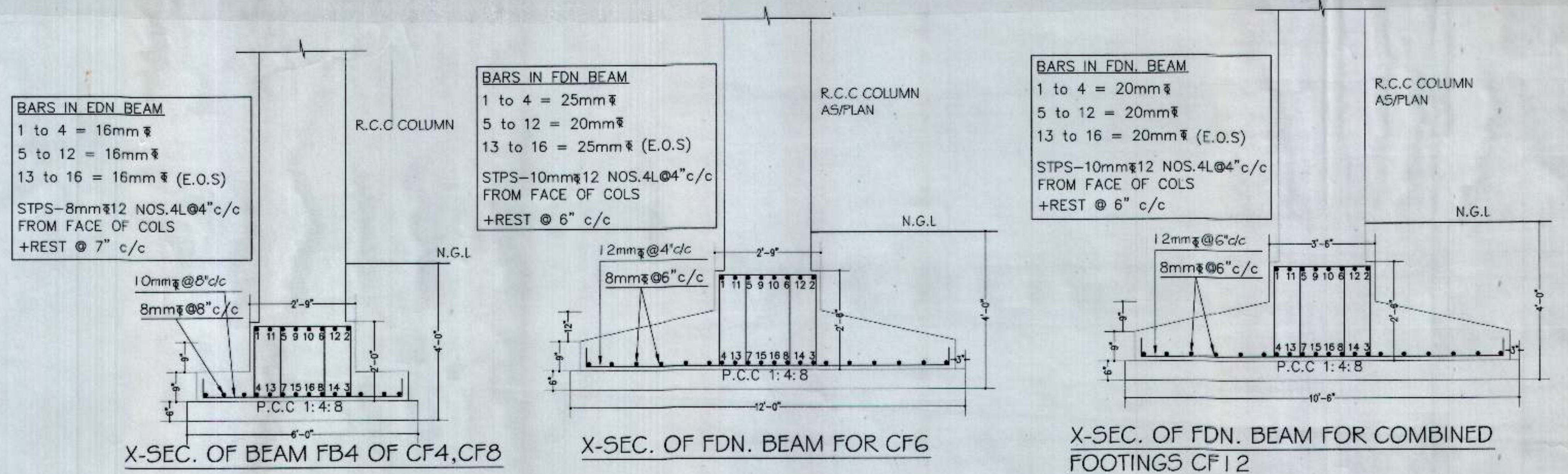
X-SECTION OF WALL W1 (1/2" THK.)

Revisions	Note
1.	Column foundation changed to strip foundation and also safe bearing capacity has been taken as 8 T/sqm on safer side due to existing site conditions

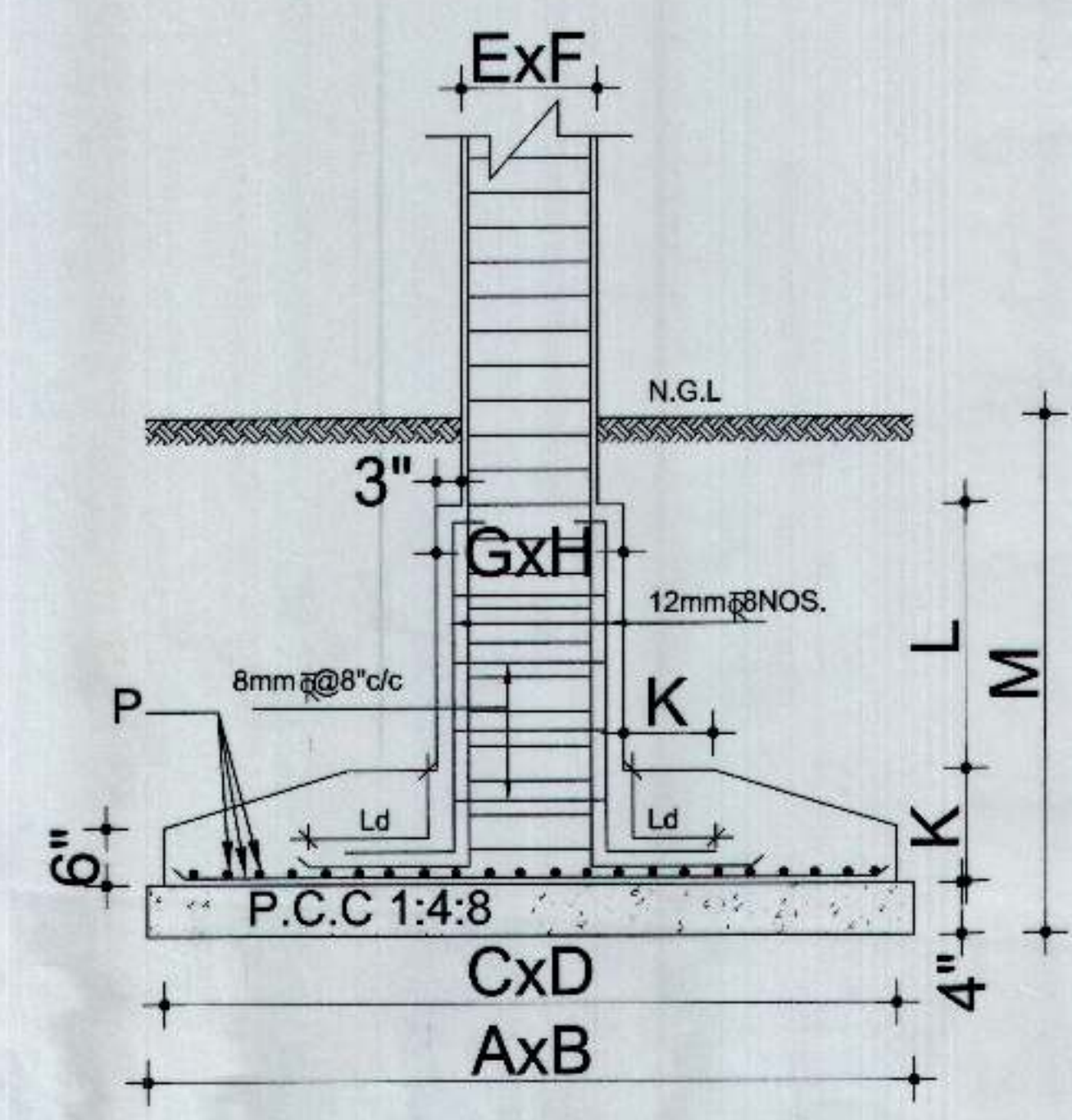
project: VOCATIONAL CENTRE MALOYA, CHANDIGARH ADMINISTRATION BLOCK	Drawn By: MUKESH	Date: 10.09.07	structural consultants: CHOPRA CONSULTING ENGINEERS # 1076, sector-218, Chandigarh phone: 0981543616, e-mail: panjajtr@hotmail.com
sheet title: FOUNDATION PLAN & DETAILS	Date: 10.09.07	Project no: HB1	Drawn By: MUKESH

SCHEDULE OF COLUMNS

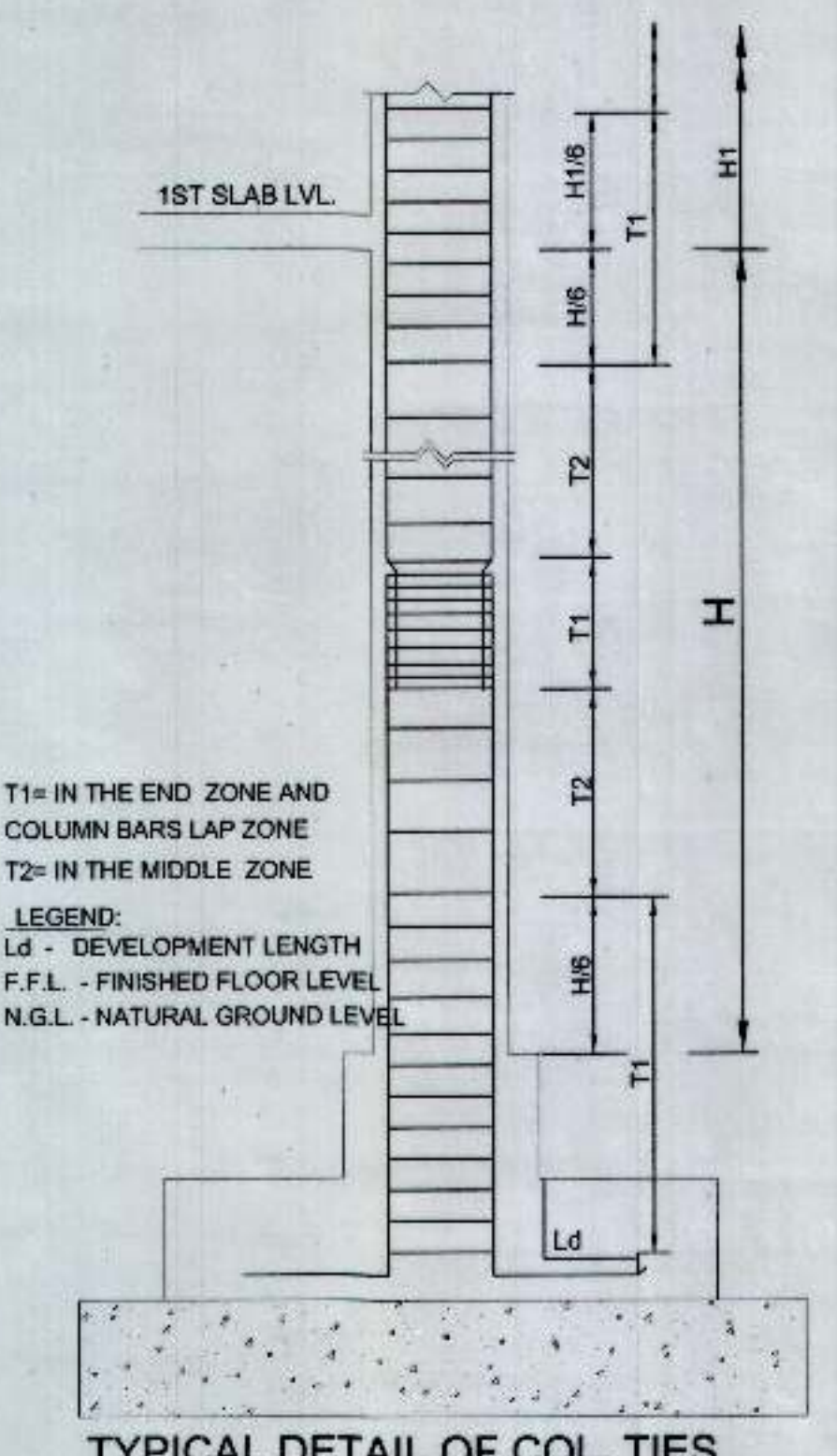
COL. NO.	GROUND TO FIRST FLOOR			FIRST TO TOP		
	SHAPE	MAIN VERT. STEEL	TIES	SHAPE	MAIN VERT. STEEL	TIES
C1		1TO10=20mm	T1:-8mm@4"/c/c (2 SETS) T2:-8mm@8"/c/c (2 SETS)			
C2		1TO10=16mm	T1:-8mm@4"/c/c (2 SETS) T2:-8mm@8"/c/c (2 SETS)			
C3		1TO8=20mm	T1:-8mm@4"/c/c (1 SETS) T2:-8mm@8"/c/c (1 SETS)			
C4		1TO12=25mm	T1:-8mm@4"/c/c (2 SETS) T2:-8mm@8"/c/c (2 SETS)			
C5		1TO4=25mm 5TO10=20mm	T1:-8mm@4"/c/c (2 SETS) T2:-8mm@8"/c/c (2 SETS)			
C6		1TO10=16mm	T1:-8mm@4"/c/c (2 SETS) T2:-8mm@8"/c/c (2 SETS)		1TO4,9,10=16mm 5TO8=12mm	T1:-8mm@4"/c/c (2 SETS) T2:-8mm@8"/c/c (2 SETS)
C7		1TO10=20mm	T1:-8mm@4"/c/c (2 SETS) T2:-8mm@8"/c/c (2 SETS)		1TO4,9,10=20mm 5TO8=16mm	T1:-8mm@4"/c/c (2 SETS) T2:-8mm@8"/c/c (2 SETS)
C8		1TO10=20mm	T1:-8mm@4"/c/c (2 SETS) T2:-8mm@8"/c/c (2 SETS)		1TO4,9,10=20mm 5TO8=16mm	T1:-8mm@4"/c/c (2 SETS) T2:-8mm@8"/c/c (2 SETS)
C9		1TO8=25mm 9TO10=20mm	T1:-8mm@4"/c/c (2 SETS) T2:-8mm@8"/c/c (2 SETS)		1TO8=25mm 9TO10=20mm	T1:-8mm@4"/c/c (2 SETS) T2:-8mm@8"/c/c (2 SETS)
C10		1,3,5,7,9=25mm 2,4,6,8,10=20mm	T1:-8mm@4"/c/c (1 SETS) T2:-8mm@8"/c/c (1 SETS)		1TO10=20mm	T1:-8mm@4"/c/c (1 SETS) T2:-8mm@8"/c/c (1 SETS)
C1A		1TO4=20mm 5TO10=16mm	T1:-8mm@4"/c/c (2 SETS) T2:-8mm@8"/c/c (2 SETS)			



COLUMN NO.	A	B	C	D	E	F	G	H	K	L	M	P
C3	6'-0"	6'-0"	5'-6"	5'-6"	15" DIA	21"	21"	12"	9"	4'-0"	10mm@6"/c/c BOTHWAYS	
C10	10'-0"	10'-0"	9'-6"	9'-6"	18" DIA	24"	24"	21"	9"	4'-0"	12mm@4"/c/c BOTHWAYS	

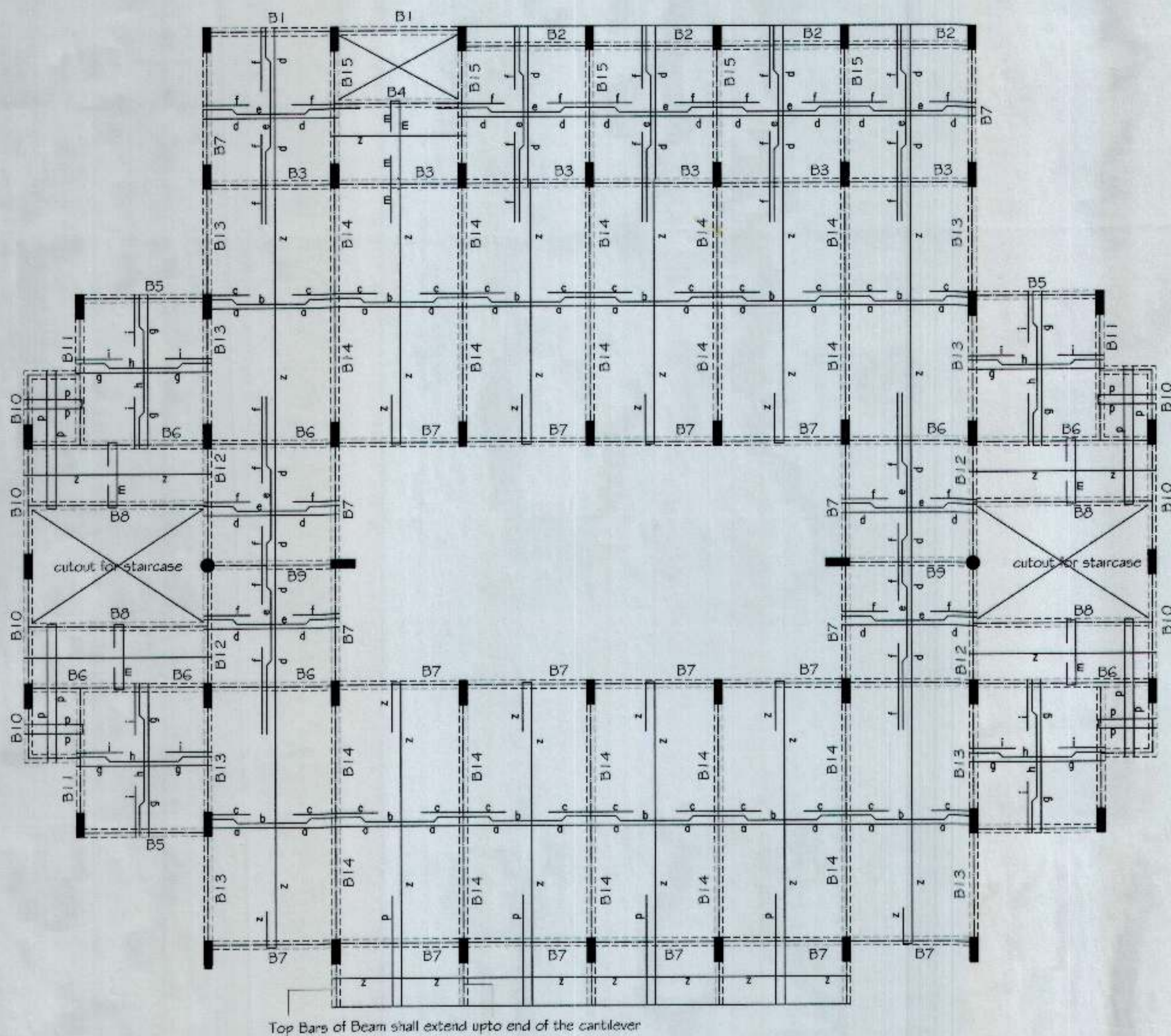


TYPICAL DETAIL OF COLUMN FOOTING
 NOTE : LD = DEVELOPMENT LENGTH FOR COLUMN BARS
 NOTE : LD' = DEVELOPMENT LENGTH FOR PEDESTAL BARS



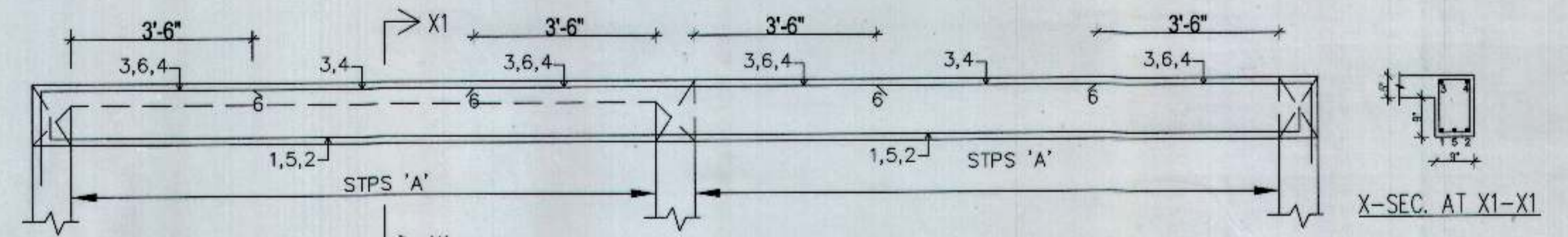
T1= IN THE END ZONE AND COLUMN BARS LAP ZONE
 T2= IN THE MIDDLE ZONE
 LEGEND:
 Ld - DEVELOPMENT LENGTH
 F.F.L. - FINISHED FLOOR LEVEL
 N.G.L. - NATURAL GROUND LEVEL

TYPICAL DETAIL OF COL. TIES



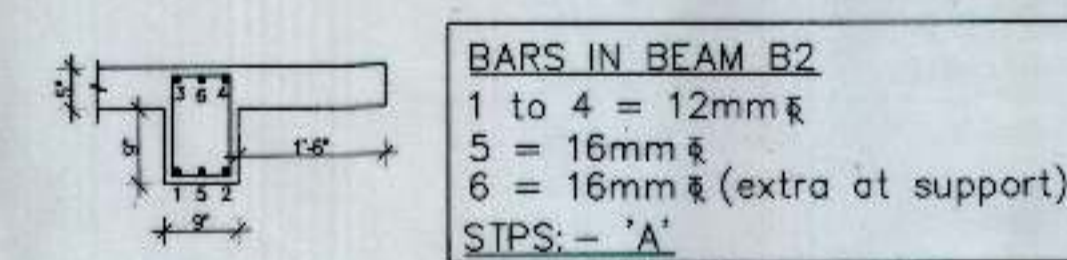
GROUND FLOOR ROOF SLAB REINFORCEMENT PLAN AND LAYOUT OF BEAMS

CONCRETE TO BE USED=M20(1:1.5:3)	
SLAB=5"THK.(UNLESS MENTIONED)	
SCHEDULE OF BARS IN G.F.ROOF SLAB	
a=10mm $\bar{\Phi}$ @10"c/c (B)	g=12mm $\bar{\Phi}$ @10"c/c (B)
b=10mm $\bar{\Phi}$ @10"c/c (C)	h=12mm $\bar{\Phi}$ @10"c/c (C)
c=10mm $\bar{\Phi}$ @10"c/c (T)	i=12mm $\bar{\Phi}$ @10"c/c (T)
d=8mm $\bar{\Phi}$ @12"c/c (B)	m=8mm $\bar{\Phi}$ @6"c/c (B/T)
e=8mm $\bar{\Phi}$ @12"c/c (C)	z = 8mm $\bar{\Phi}$ @ 8"c/c
f=10mm $\bar{\Phi}$ @12"c/c (T)	p=12mm $\bar{\Phi}$ @4"c/c (T/B)
B=BOTTOM C=CRANK T=TOP	
(z=distt.st./under crank/holding bars)	

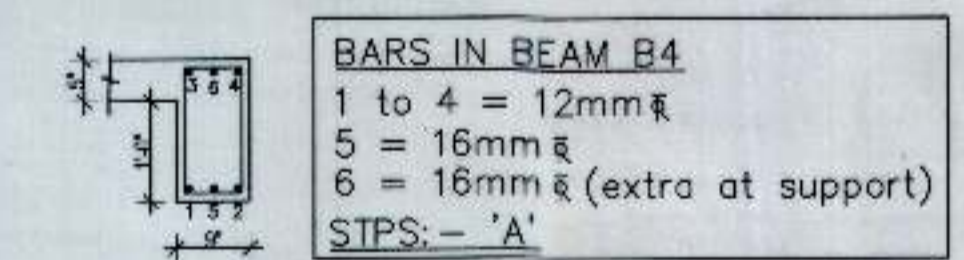


L-SEC. OF BEAM B-1
BARS IN BEAM B1
 1,2,3,4 = 12mm $\bar{\Phi}$
 5,6 = 16mm $\bar{\Phi}$

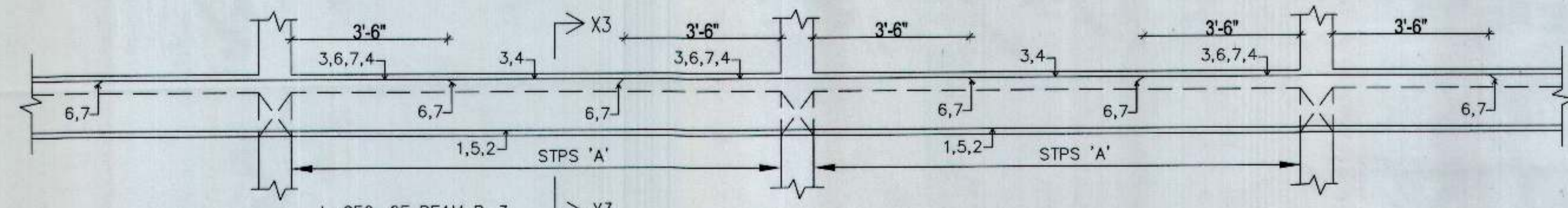
STPS 'A' :- 8mm $\bar{\Phi}$ 8 Nos @ 4" c/c FROM SUPPORTS + rest @ 6" c/c



BARS IN BEAM B2
 1 to 4 = 12mm $\bar{\Phi}$
 5 = 16mm $\bar{\Phi}$
 6 = 16mm $\bar{\Phi}$ (extra at support)
 STPS: - 'A'

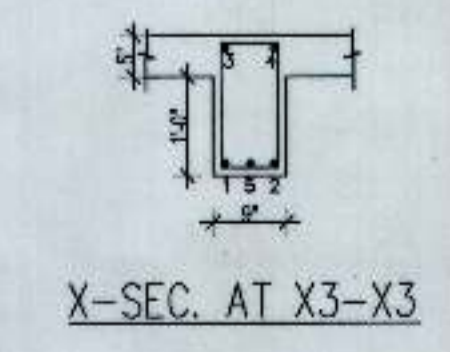


BARS IN BEAM B4
 1 to 4 = 12mm $\bar{\Phi}$
 5 = 16mm $\bar{\Phi}$
 6 = 16mm $\bar{\Phi}$ (extra at support)
 STPS: - 'A'



L-SEC. OF BEAM B-3
BARS IN BEAM B3
 1,2,3,4 = 16mm $\bar{\Phi}$
 5,6,7 = 20mm $\bar{\Phi}$

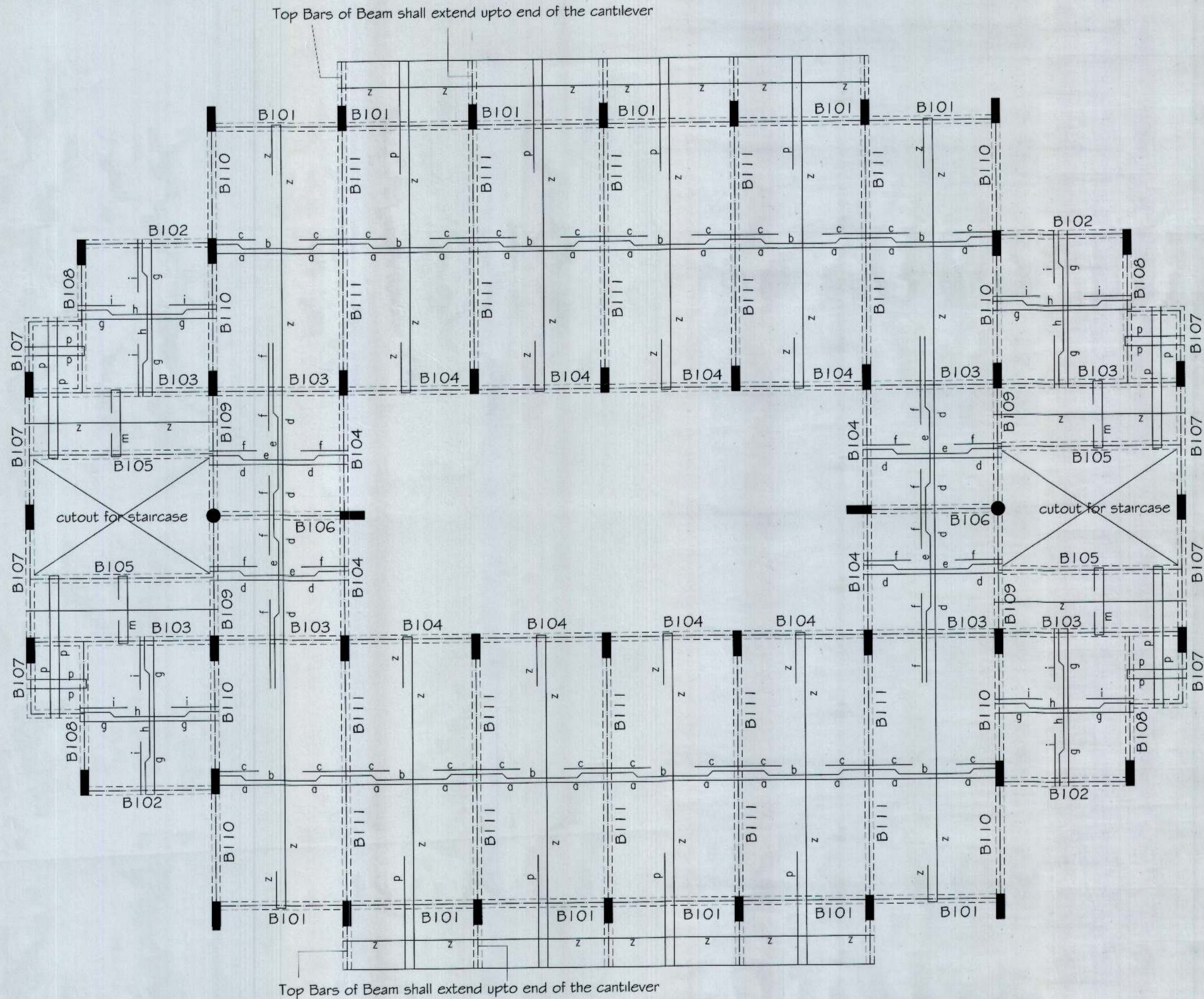
STPS 'A' :- 8mm $\bar{\Phi}$ 8 Nos @ 4" c/c FROM SUPPORTS + rest @ 6" c/c



Revisions	Note	Date & Time

project: VOCATIONAL CENTRE MALLOYA, CHANDIGARH RESIDENTIAL BLOCK sheet title: GROUND FLOOR ROOF SLAB & BEAM DETAILS	Drawn By: MUKESH Scale: N.T.S. Project no: HB1	Dealt by: MUKESH Date: 10.09.07 Dwg no: 53	structural consultants: CHOPRA CONSULTING ENGINEERS # 1076, sector-21B, Chandigarh phone: 09815443616, e-mail: pankajstr@hotmail.com
--	---	---	---

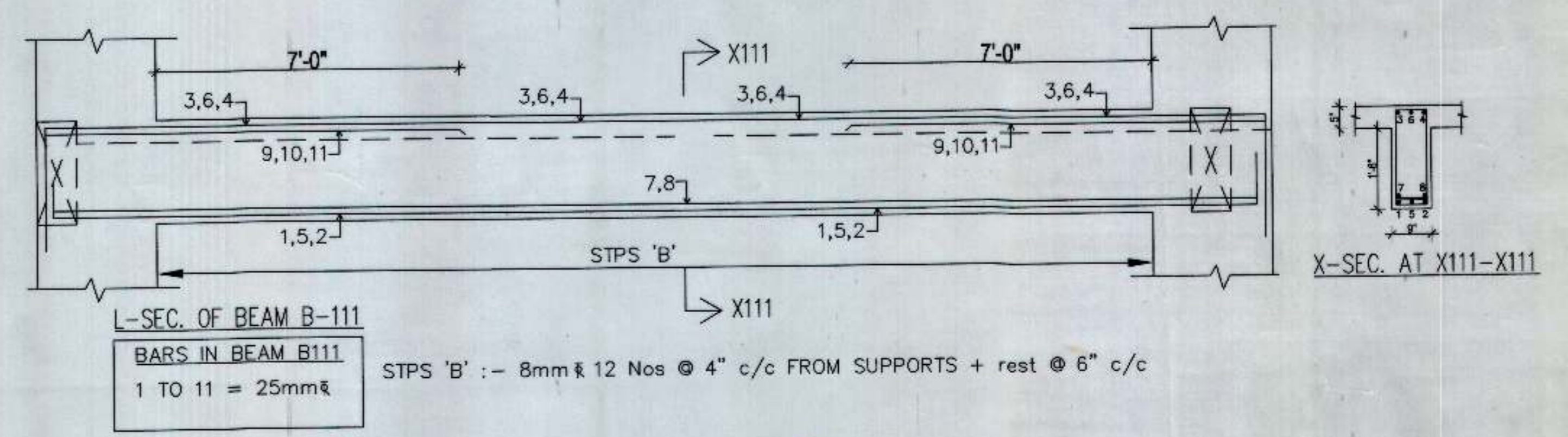
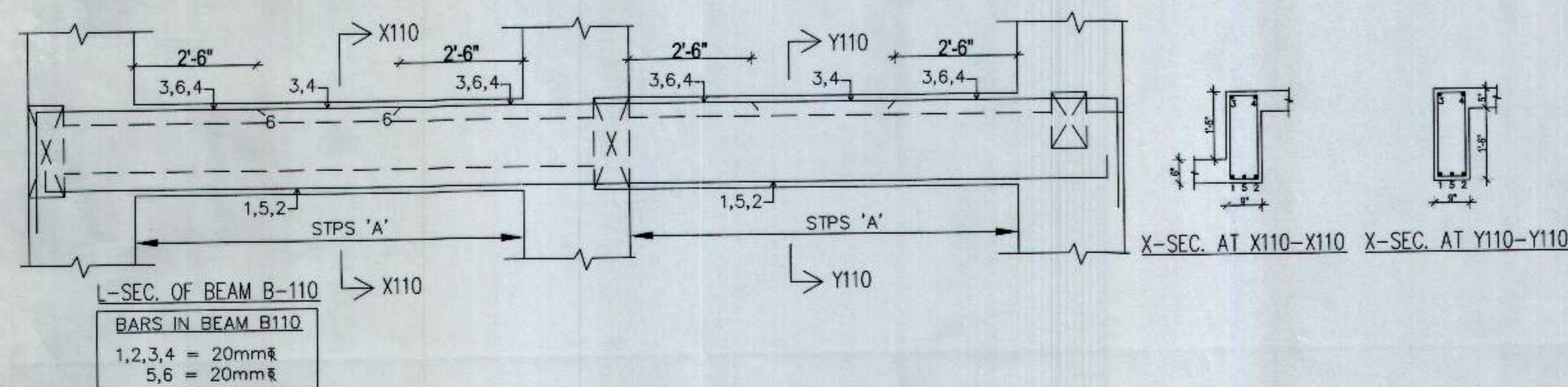
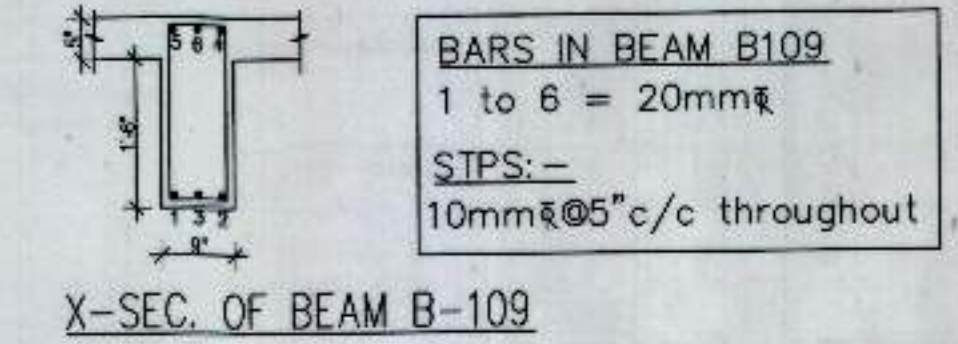
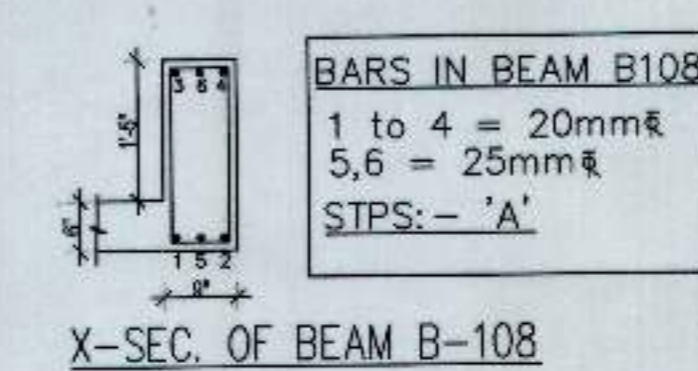
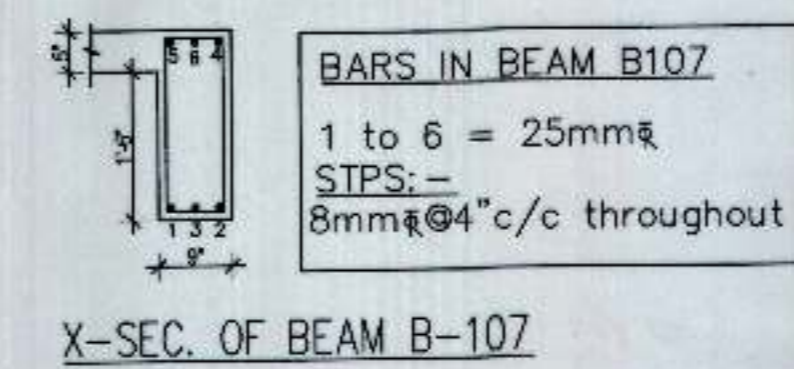
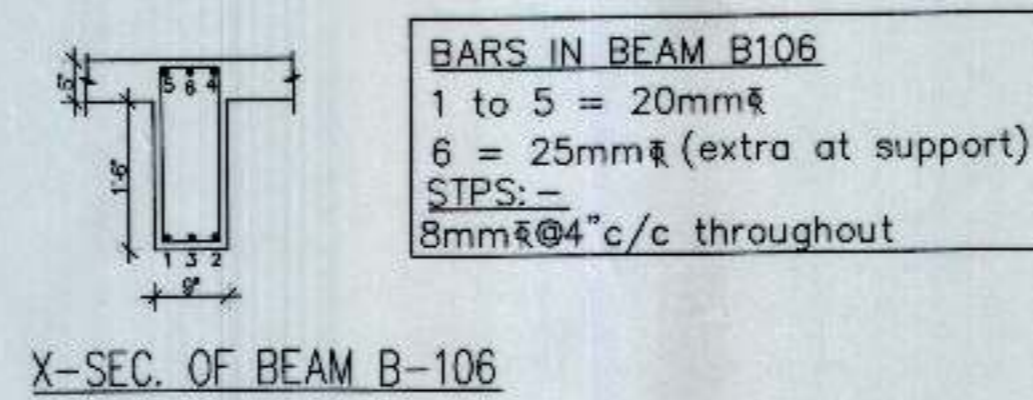
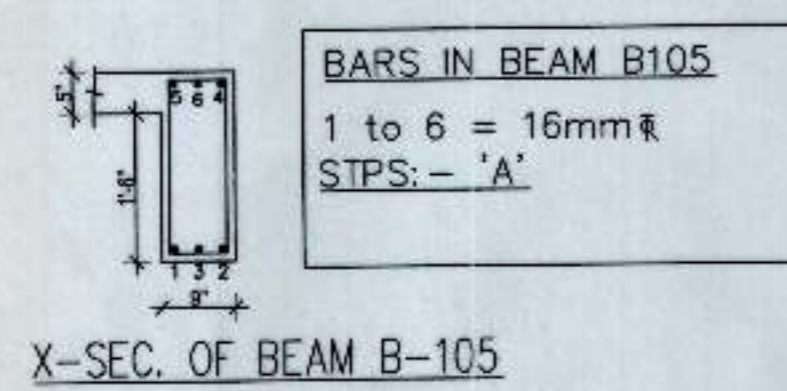
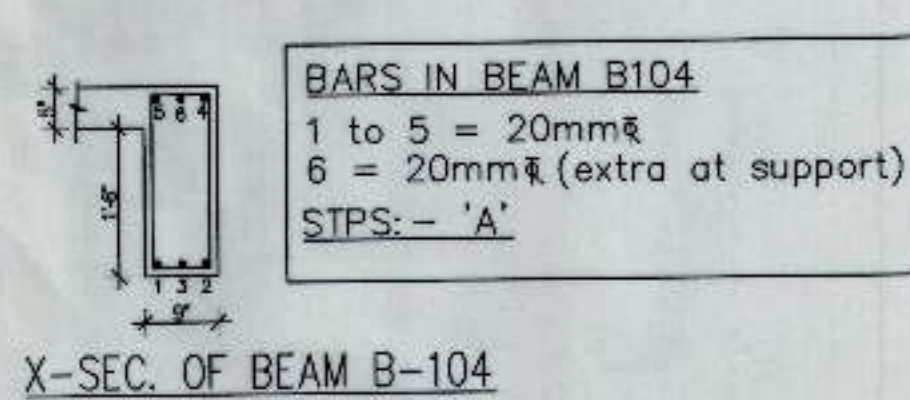
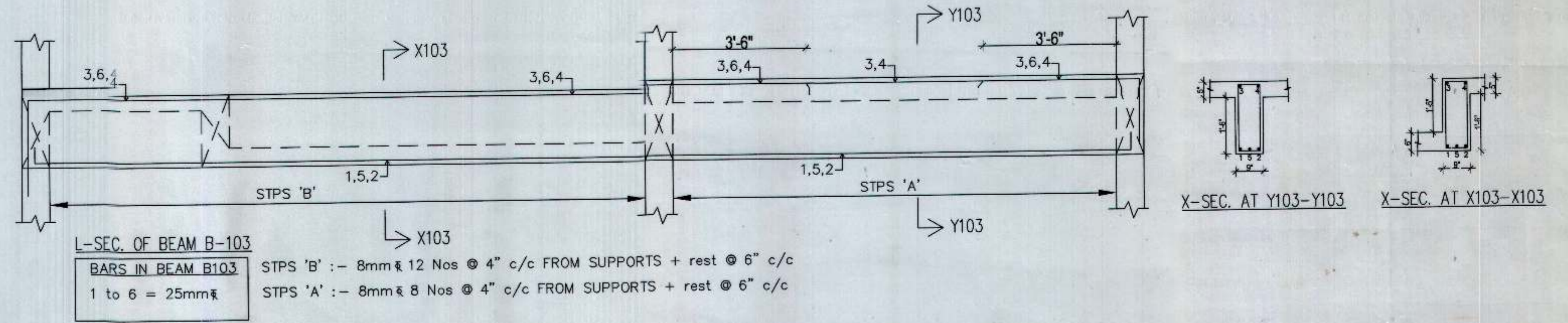
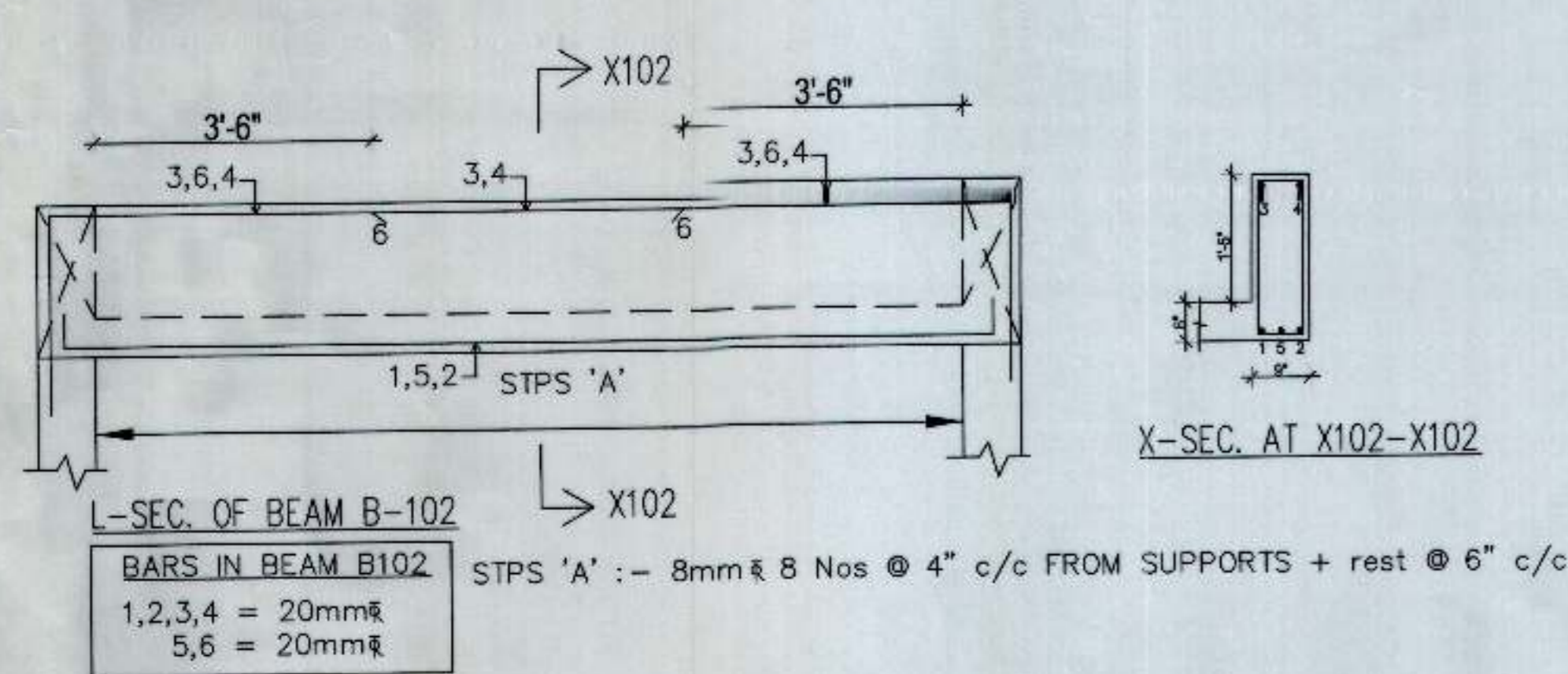
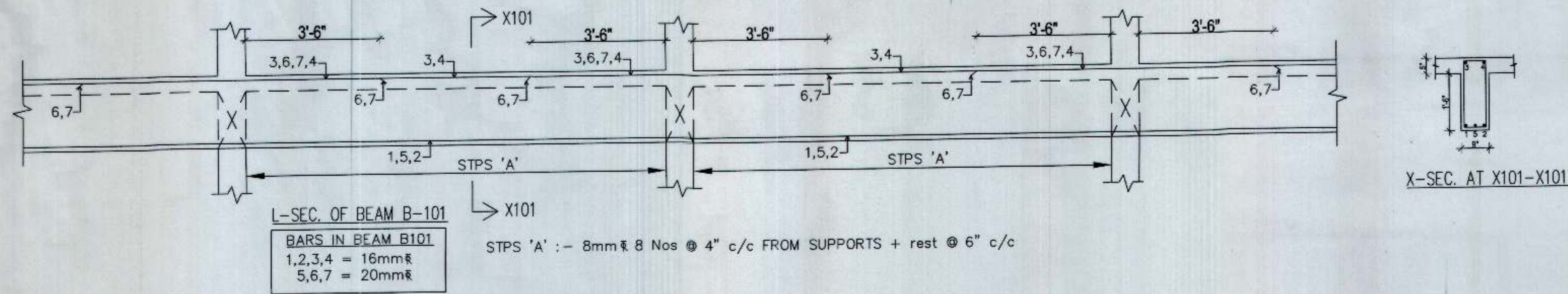
CONCRETE TO BE USED=M20(1:1.5:3)	
SLAB=5"THK.(UNLESS MENTIONED)	
SCHEDULE OF BARS IN F.F.ROOF SLAB	
a=10mm Φ @10"c/c (B)	g=12mm Φ @10"c/c (B)
b=10mm Φ @10"c/c (C)	h=12mm Φ @10"c/c (C)
c=10mm Φ @10"c/c (T)	i=12mm Φ @10"c/c (T)
d=8mm Φ @12"c/c (B)	m=8mm Φ @6"c/c (B/T)
e=8mm Φ @12"c/c (C)	z = 8mm Φ @ 8"c/c
f=10mm Φ @12"c/c (T)	p=12mm Φ @4"c/c (T/B)
B=BOTTOM	C=CRANK
T=TOP	
(z=distt.st./under crank/holding bars)	



FIRST FLOOR ROOF SLAB REINFORCEMENT PLAN AND LAYOUT OF BEAMS

Revisions	Note	Date & Time

project: VOCATIONAL CENTRE MALOYA, CHANDIGARH RESIDENTIAL BLOCK	Drawn By: MUKESH	Dealt by: MUKESH	structural consultants: CHOPRA CONSULTING ENGINEERS # 1076, sector-218, Chandigarh phone: 09815443616, e-mail: pankajstr@hotmail.com
sheet title: FIRST FLOOR ROOF SLAB & BEAM DETAILS	Scale: N.T.S	Date: 10.09.07	Project no: HB1
		Dig no: 55	



Revisions	Note	Date & Time

PROJECT:
VOCATIONAL CENTRE MALOYA,
CHANDIGARH
RESIDENTIAL BLOCK

sheet No:
FIRST FLOOR ROOF SLAB & BEAM DETAILS

Drawn By:
MUKESH

Scale:
N.T.S

Project no:
HB1

Dealt by:
MUKESH

Date:
10.08.07

Dwg no:
SB

structural consultants:
CHOPRA CONSULTING ENGINEERS

1076, sector-21B, Chandigarh
phone: 09815443616,
e-mail: pankajstr@hotmail.com