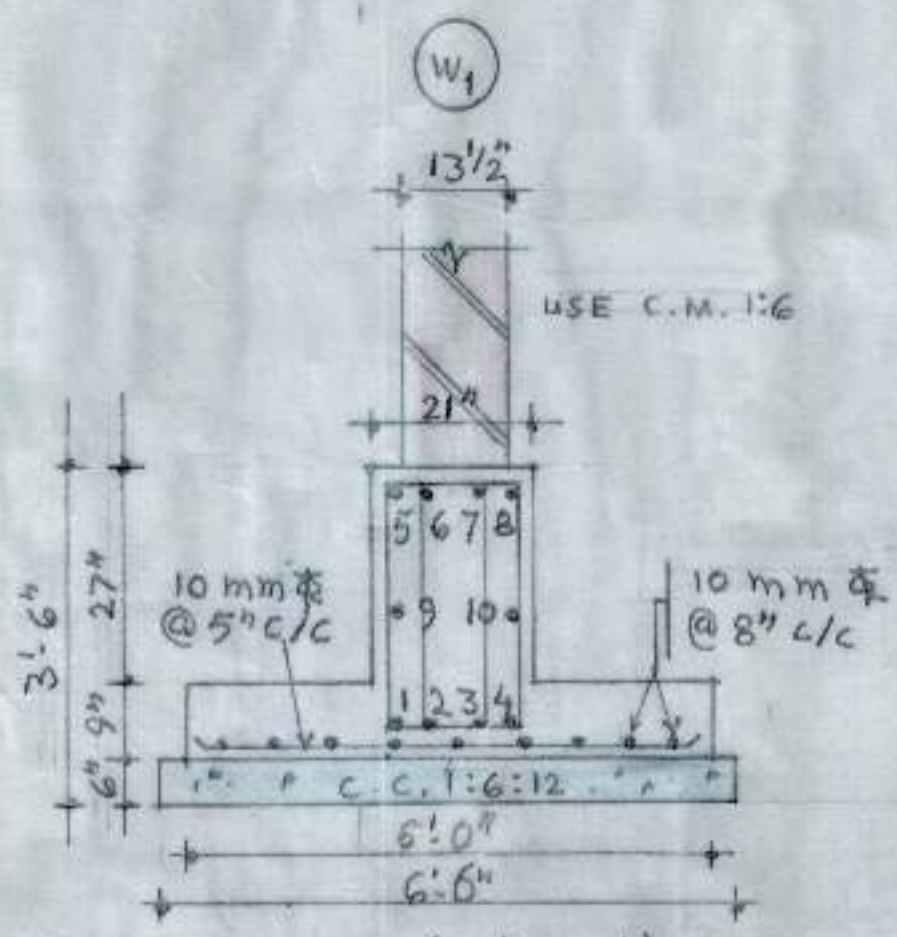
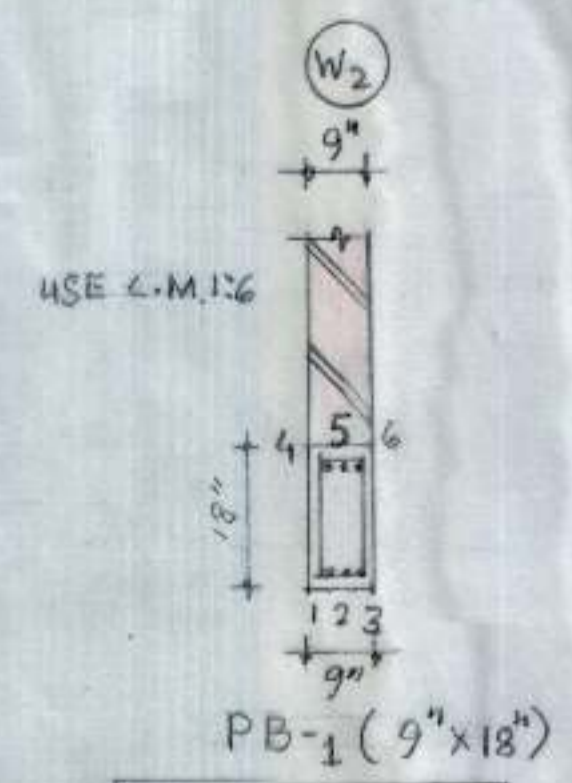


NOTES :-

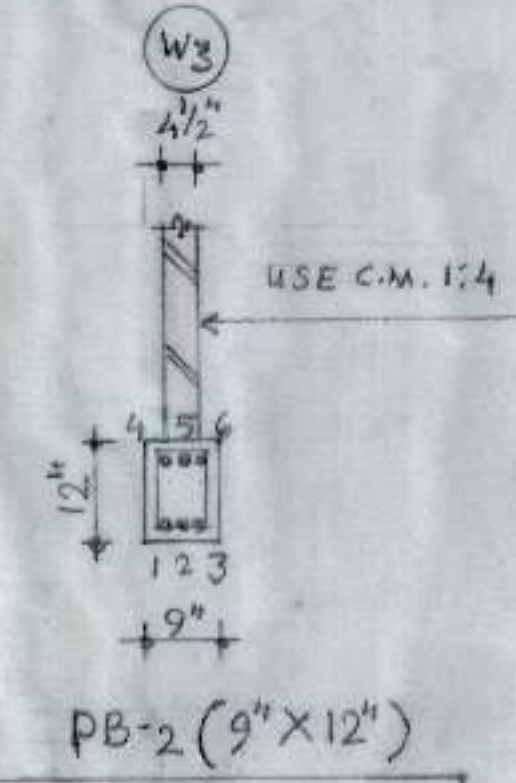
1. USE M-20 CONC.
2. USE TOR STEEL CONFORMING TO IS 1786-1986 OF GRADE Fe 415.
3. P.C.C. SHALL BE MACHINE MIXED.
4. FOR DETAIL DIMENSIONS REFER ARCH. DRGS.
5. DIMENSIONS TO BE READ AND NOT TO BE SCALED OUT.
6. NET SAFE BEARING OF 11 T/M<sup>2</sup> HAS BEEN TAKEN FOR DESIGN OF FOUNDATION WHICH SHOULD BE ENSURED AT SITE.
7. FOR LAYING OF RCC & PLACING OF REINF. ALL CODAL PROVISIONS LAID IN IS 456-2000 SHOULD BE STRICTLY FOLLOWED.
8. DISCREPANCIES BETWEEN DETAILS SHOWN IN THIS DRG. & ARCH. DRGS, IF ANY BE GOT CLARIFIED FROM THIS OFFICE BEFORE EXECUTION OF WORK.
9. CEMENT MORTAR TO BE USED FOR BRICK WALLS SHALL BE AS SPECIFIED IN DRGS.



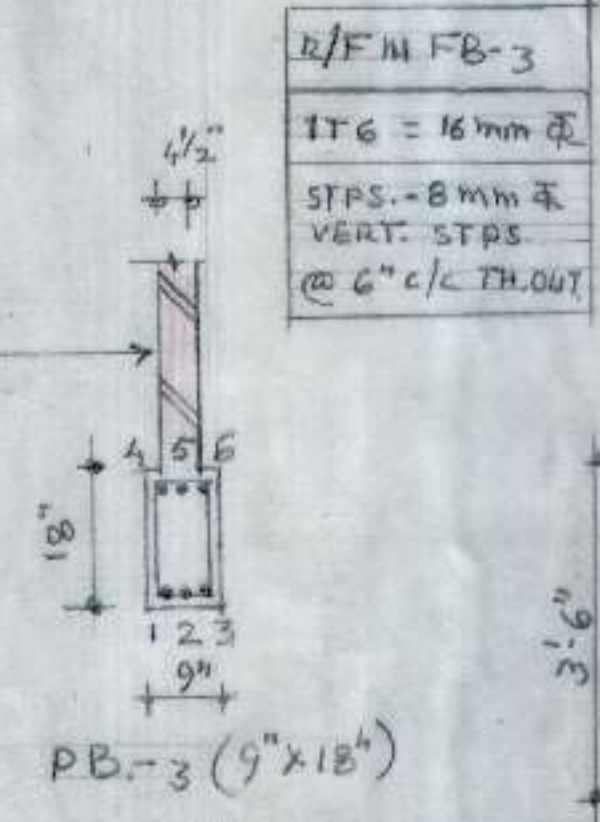
R/F IN F.B.-1  
 1 TO 10 = 20 mm  $\bar{\Phi}$   
 11, 12 = 12 mm  $\bar{\Phi}$   
 STPS. - 8 mm  $\bar{\Phi}$  4 LEGG. VERT STPS. 8 NOS. @ 8" c/c REST @ 12" c/c FROM EACH SUPPORT



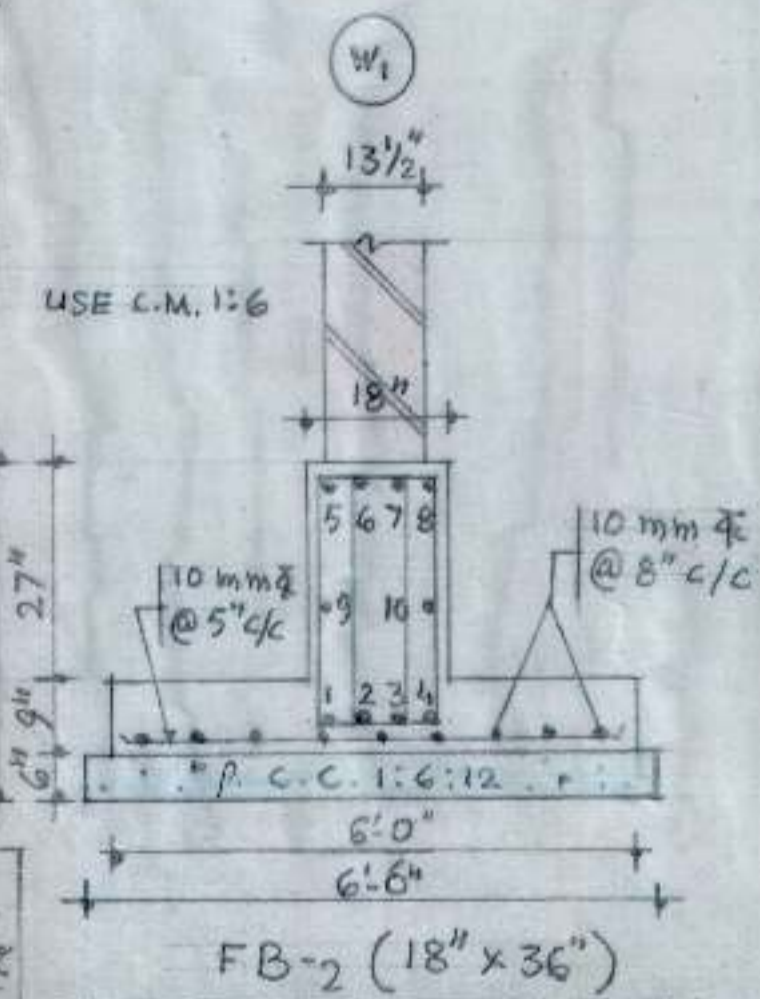
R/F IN PB-1  
 1 TO 6 = 16 mm  $\bar{\Phi}$   
 STPS. - 8 mm  $\bar{\Phi}$  VERT. STPS. @ 6" c/c TH. OUT.



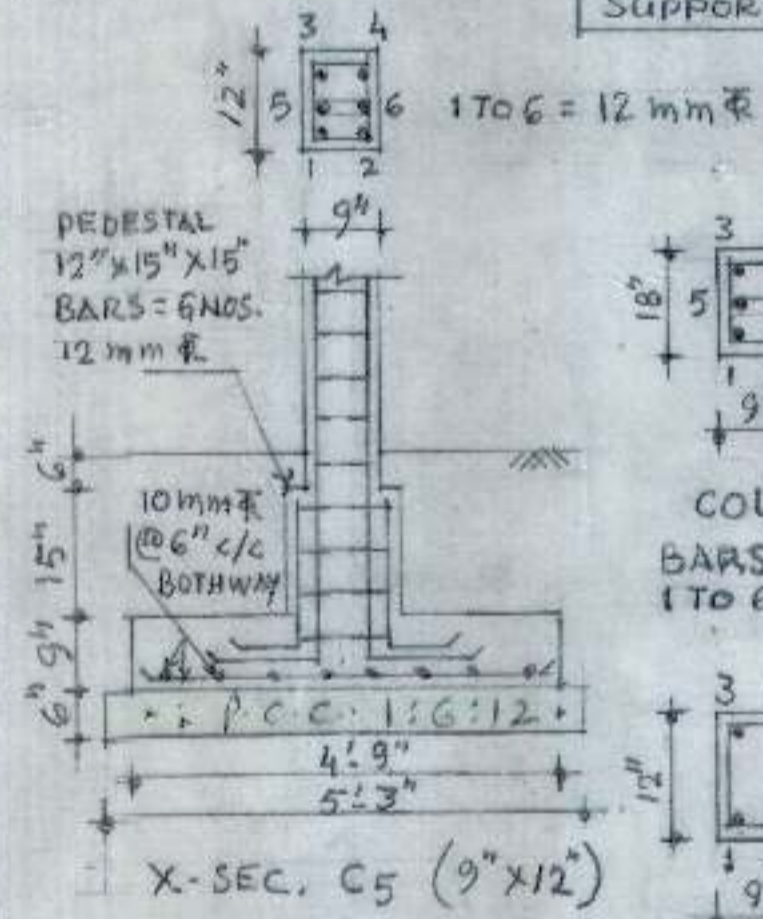
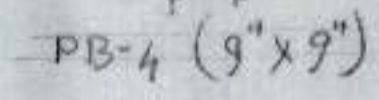
R/F IN PB-2  
 1 TO 6 = 16 mm  $\bar{\Phi}$   
 STPS. - 8 mm  $\bar{\Phi}$  VERT. STPS. @ 6" c/c TH. OUT.



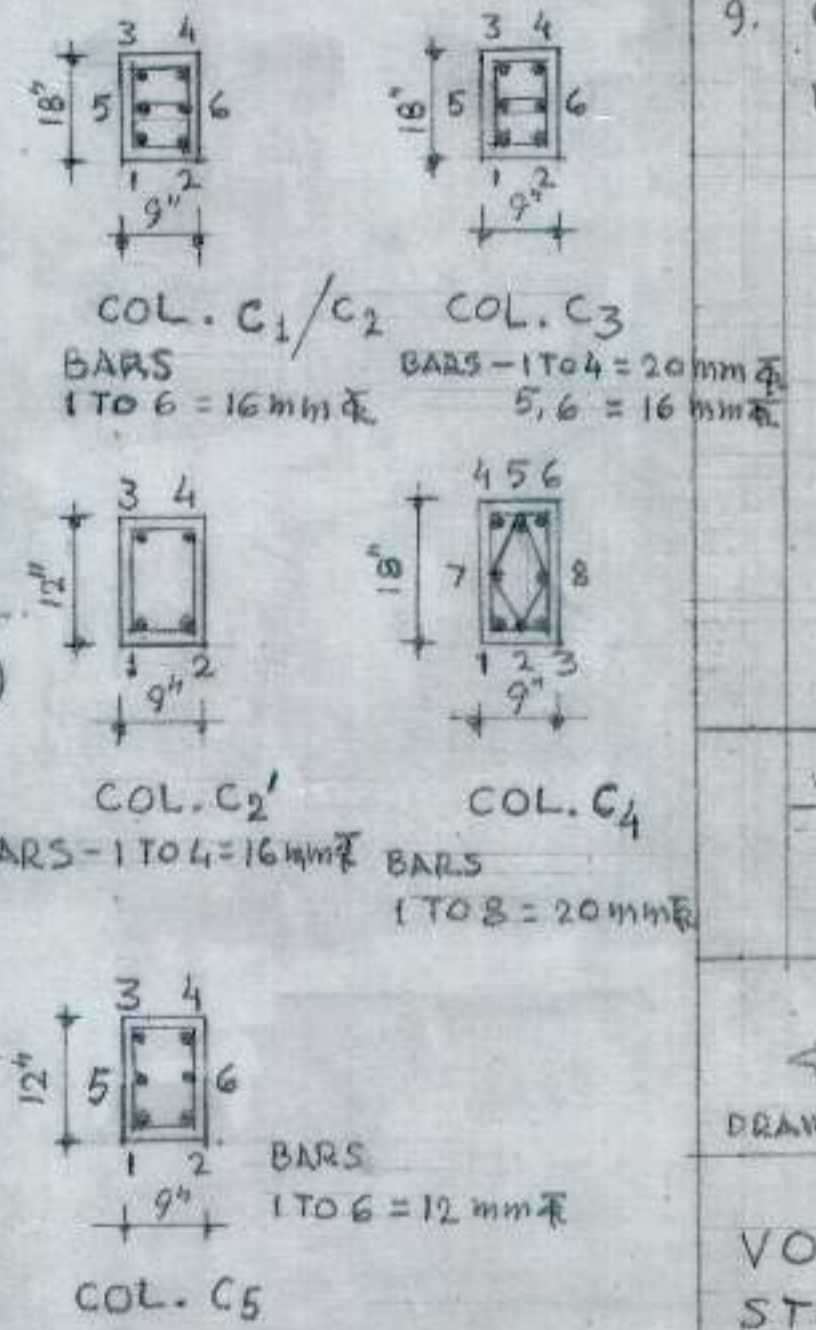
R/F IN PB-4  
 1 TO 4 = 12 mm  $\bar{\Phi}$   
 STPS. - 8 mm  $\bar{\Phi}$  VERT. STPS. @ 6" c/c TH. OUT.



R/F IN FB-2  
 1 TO 8 = 20 mm  $\bar{\Phi}$   
 9, 10 = 12 mm  $\bar{\Phi}$   
 STPS. - 8 mm  $\bar{\Phi}$  4 LEGG. VERT. STPS. 8 NOS. @ 9" c/c REST @ 12" c/c FROM EACH SUPPORT.



PEDESTAL 12" x 15" x 15" BARS = 6 NOS. 12 mm  $\bar{\Phi}$   
 10 mm  $\bar{\Phi}$  @ 6" c/c BOTHWAY  
 X-SEC. C5 (9" x 12")  
 COL. C5 BARS - 1 TO 4 = 16 mm  $\bar{\Phi}$  BARS 5, 6 = 16 mm  $\bar{\Phi}$   
 COL. C2' BARS - 1 TO 4 = 16 mm  $\bar{\Phi}$  COL. C4 BARS - 1 TO 8 = 20 mm  $\bar{\Phi}$   
 COL. C5 BARS - 1 TO 6 = 12 mm  $\bar{\Phi}$



COL. TIES. - 8 mm  $\bar{\Phi}$  @ 4" c/c IN H/G AND OVERLAP ZONE, REST @ 8" c/c

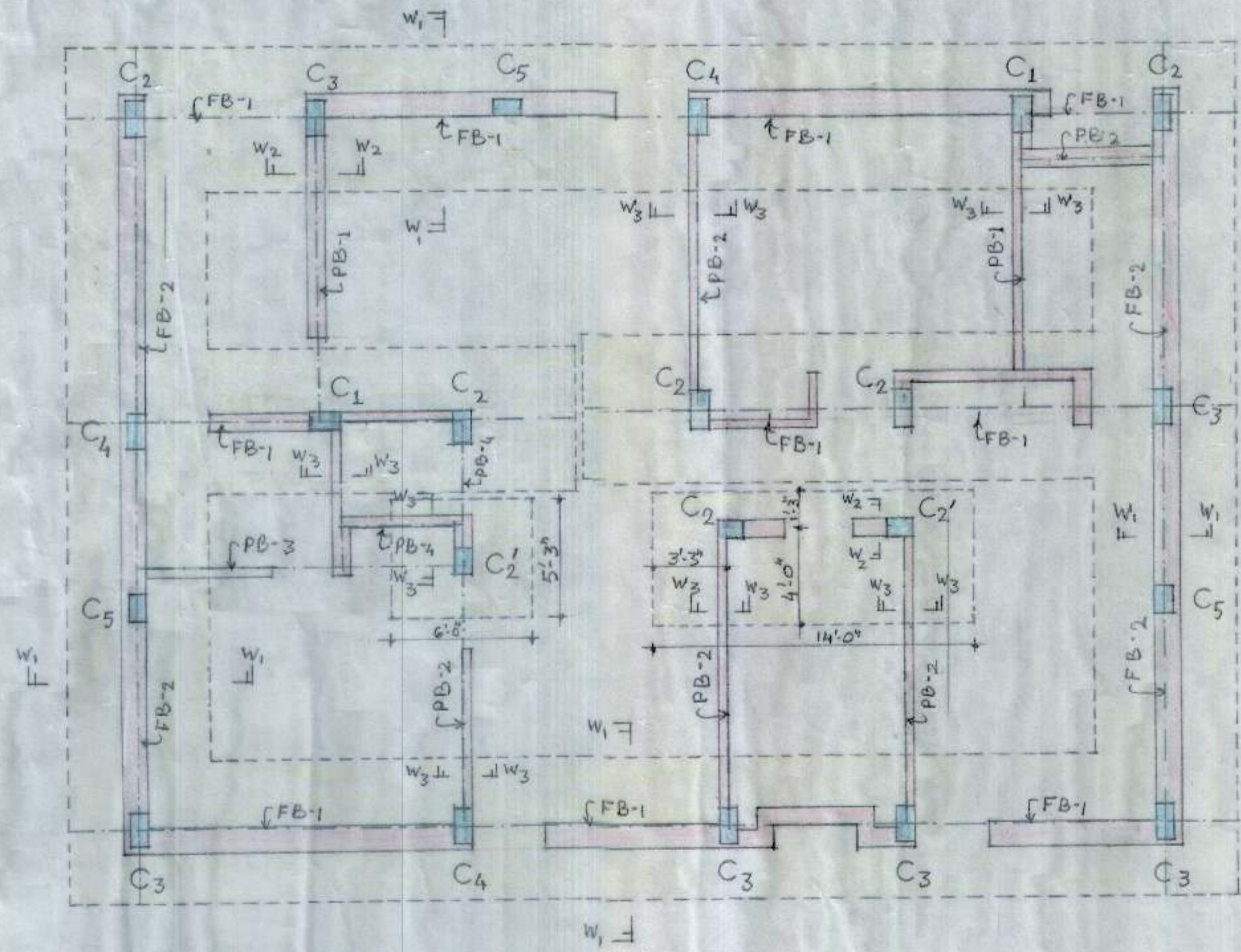
DRAWN: [Signature] AE-ec  
 EE-E

VOCATIONAL CENTRE FOR STREET CHILDREN AT MALOYA-II  
 COORDINATOR'S RESIDENCE

NOTE :-  
 COL. C5 TO BE CARRIED ONLY UPTO GROUND FLOOR ROOF SLAB NOT TO BE CARRIED IN UPPER STORYS.

FOUNDATION KEY PLAN  
 FOUNDATION BEAM & PLITH BEAMS DETAIL

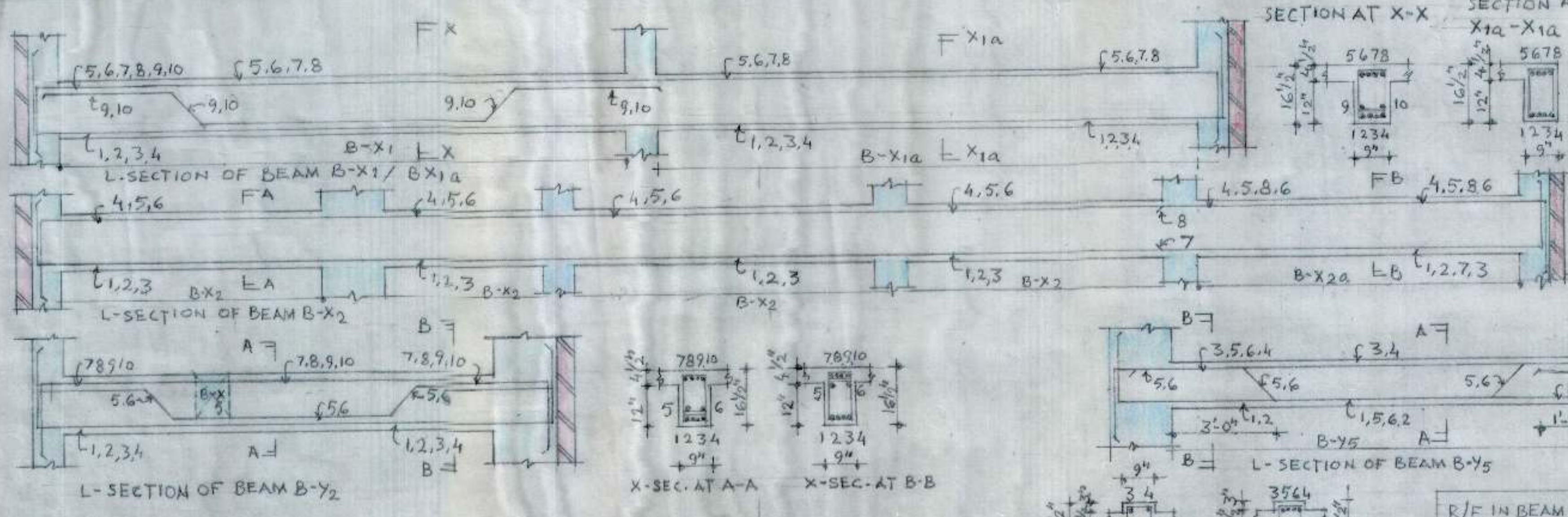
DRG. NO. 01  
 JOB NO. 136  
 DATE JAN. 2009



FOUNDATION KEY PLAN

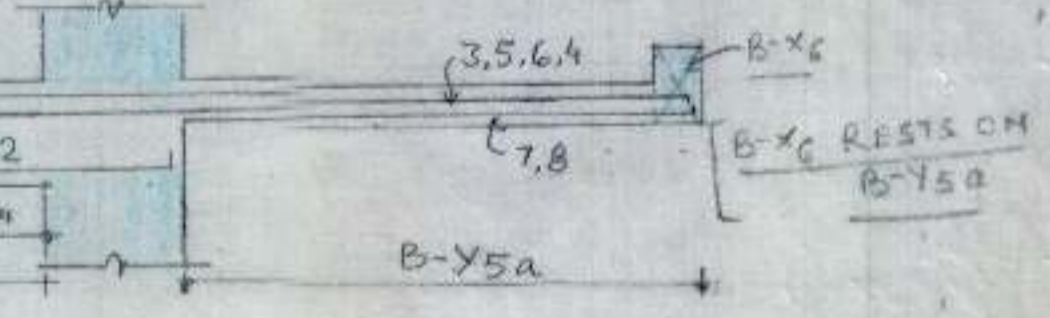
CHANDIGARH HOUSING BOARD CHANDIGARH.

NOTE :-  
FOR STR. NOTE REFER DRG. NO. 1  
JOB NO. 136

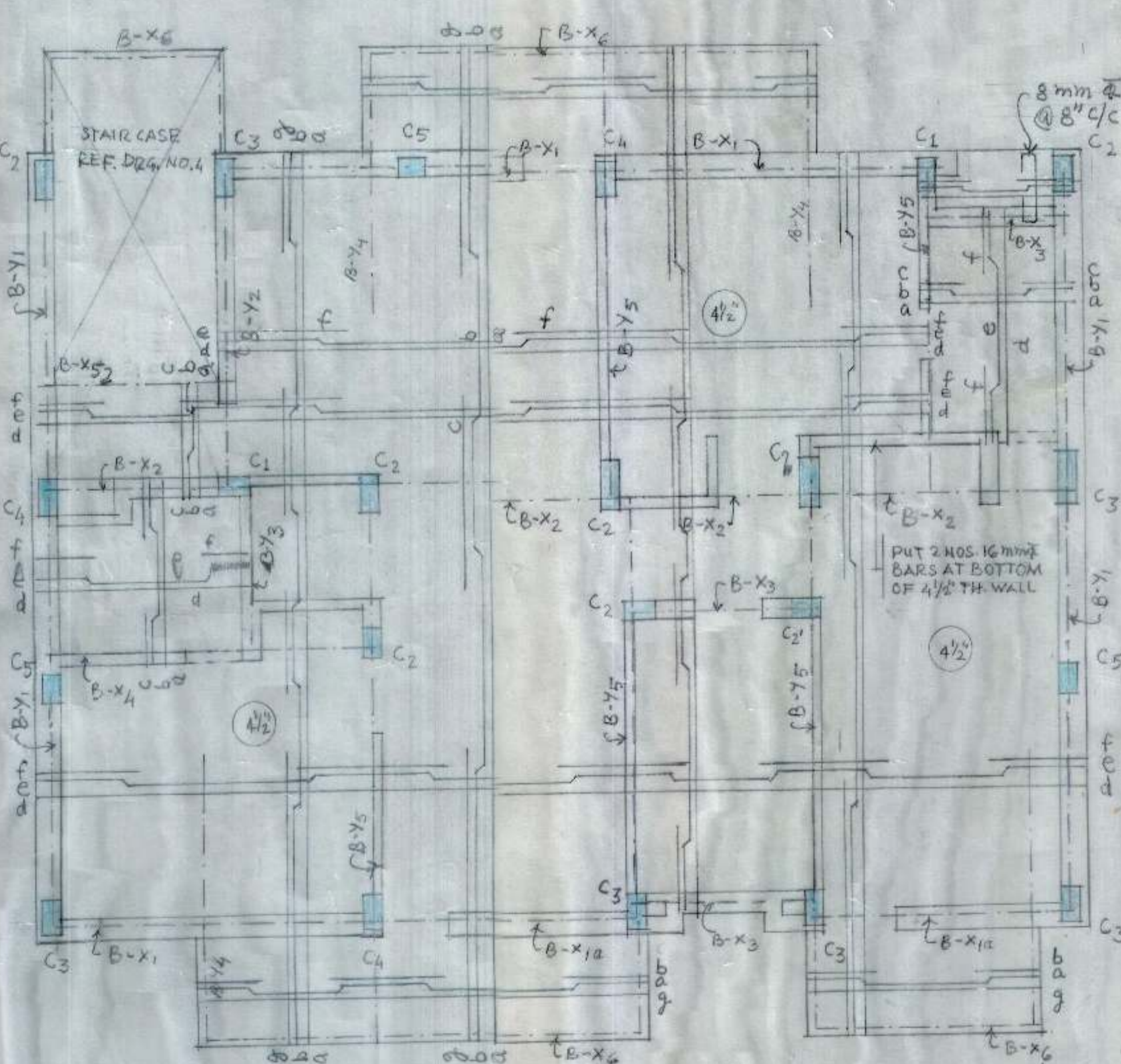


R/F IN BEAM B-X1/B-X1a  
1 TO 10 = 16 mm  $\Phi$   
STPS. 'A'

R/F IN BEAM B-X2/B-X2a  
1 TO 8 = 16 mm  $\Phi$   
STPS. 'A'

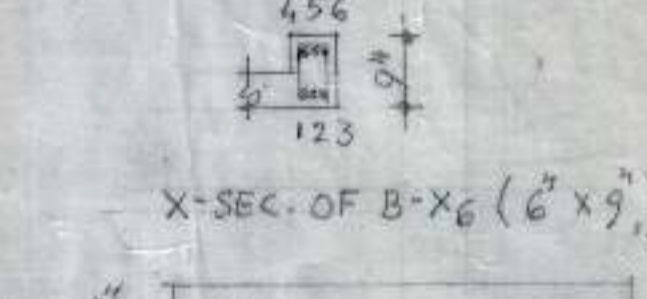
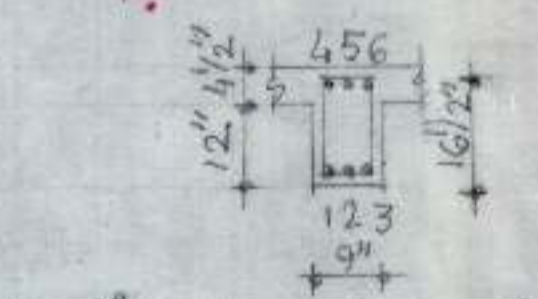
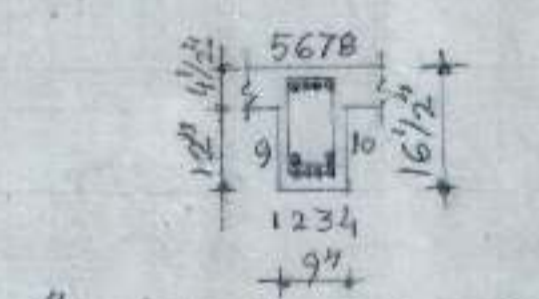
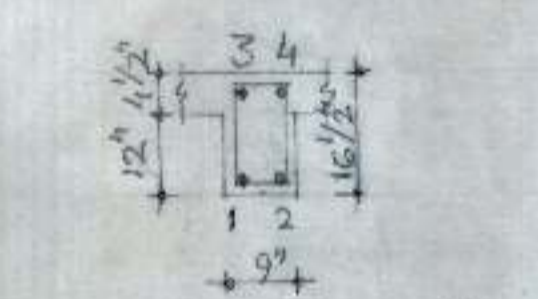


R/F IN BEAM B-Y5/B-Y5a  
1 TO 6 = 16 mm  $\Phi$   
7, 8 = 12 mm  $\Phi$   
STPS. 'A'



X-SEC. AT A-A

X-SEC. AT B-B



R/F IN BEAM B-X3  
1 TO 4 = 16 mm  $\Phi$   
STPS. 'A'

R/F IN BEAM B-X4  
1 TO 10 = 16 mm  $\Phi$   
STPS. 'A'

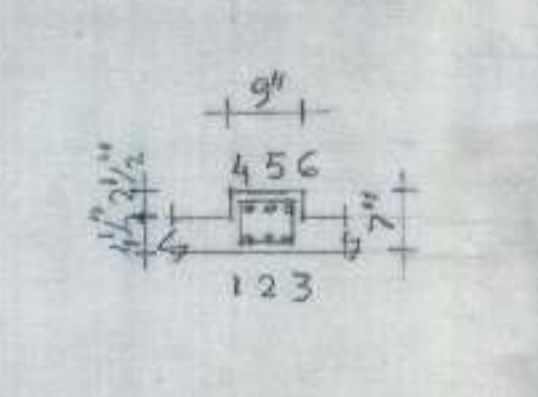
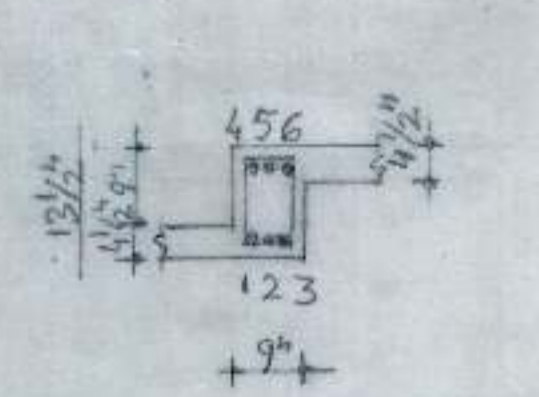
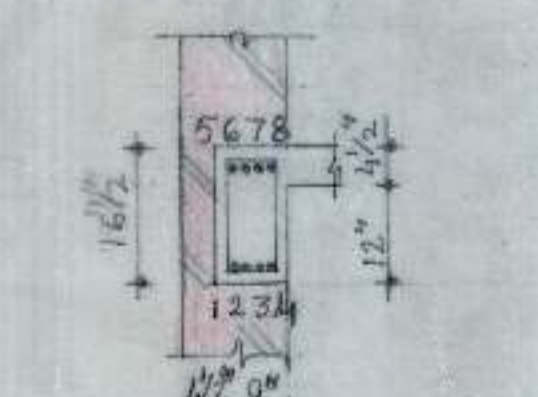
R/F IN BEAM B-X5  
1 TO 6 = 16 mm  $\Phi$   
STPS. 'A'

R/F IN BEAM B-X6  
1 TO 6 = 12 mm  $\Phi$   
STPS. 'B'

NOTE:- B-Y3 RESTS ON B-X4

R/F IN ROOF SLAB 4 1/2" THICK

R/F IN RCC ROOF SLAB 4 1/2" THICK  
a, b, c = 10 mm  $\Phi$  @ 14" c/c  
d, e, f = 10 mm  $\Phi$  @ 16" c/c  
g = 12 mm  $\Phi$  @ 7" c/c



R/F IN BEAM B-Y1  
1 TO 8 = 16 mm  $\Phi$   
STPS. 'A'

R/F IN BEAM B-Y3  
1 TO 6 = 16 mm  $\Phi$   
STPS. 'A'

R/F IN BEAM B-Y4  
1 TO 6 = 16 mm  $\Phi$   
STPS. 'A'

STPS. 'A' STPS. - 8 mm  $\Phi$  2 LEGG. VERT. STPS. 8 NOS. @ 4" c/c + REST @ 6" c/c FROM EACH SUPPORT.

STPS. 'B' STPS. - 8 mm  $\Phi$  2 LEGG. VERT. STPS. @ 4" c/c THOUT

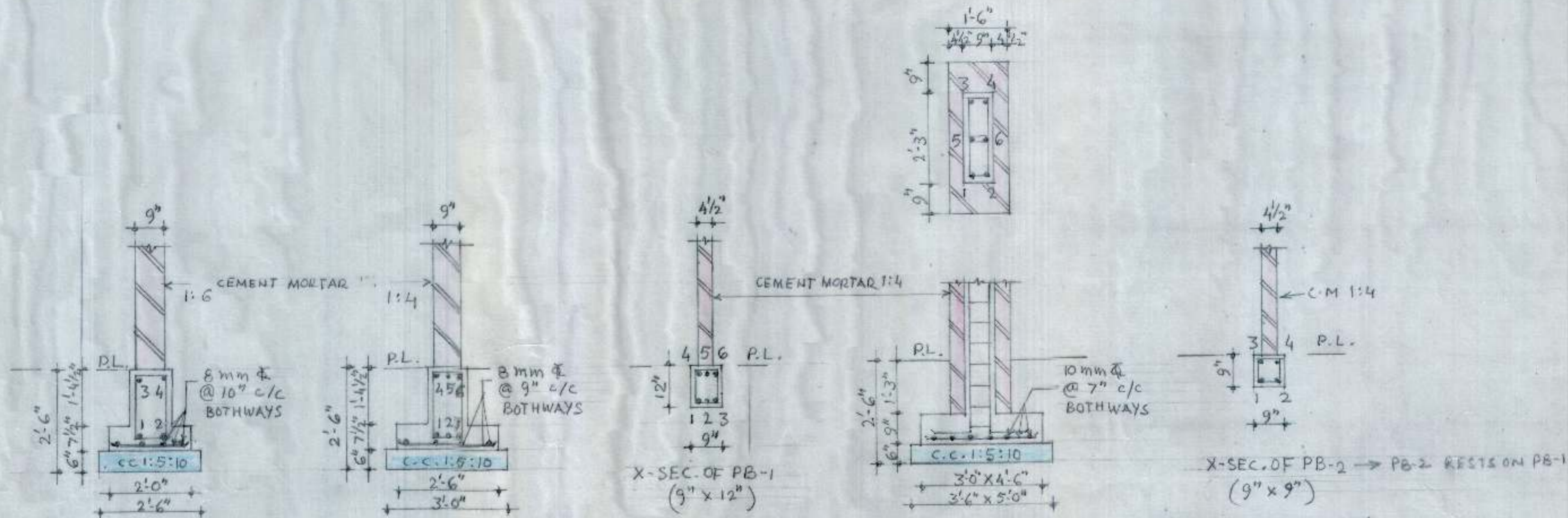
EE-I/DESIGN

DRAWN BY: [Signature] A.E. QC/DESIGN

COORDINATORS RESIDENCE  
DETAIL OF ROOF SLAB  
DETAIL OF BEAMS

DRG. NO. 02 JOB NO. 136 DATE:- FEB, 2009

NOTE:-  
FOR STRUCTURAL NOTE REF.  
DRG. NO. 01, JOB NO. 136



X-SECTION OF BOUNDARY WALL

|                                   |
|-----------------------------------|
| R/F IN FB OF B.WALL               |
| 1 TO 4 = 12 mm $\bar{\Phi}$       |
| STPS. - 8 mm $\bar{\Phi}$ 2 LEGG. |
| VERT. STPS. @ 9" c/c TH. OUT.     |

X-SECTION OF FB/WALL (W)

|                                   |
|-----------------------------------|
| R/F IN FB <sub>1</sub>            |
| 1 TO 6 = 16 mm $\bar{\Phi}$       |
| STPS. - 8 mm $\bar{\Phi}$ 2 LEGG. |
| VERT. STPS. @ 7 1/2" c/c TH. OUT. |

R/F IN PB-1

|                                   |
|-----------------------------------|
| 1 TO 6 = 16 mm $\bar{\Phi}$       |
| STPS. - 8 mm $\bar{\Phi}$ 2 LEGG. |
| VERT. STPS. @ 6" c/c TH. OUT.     |

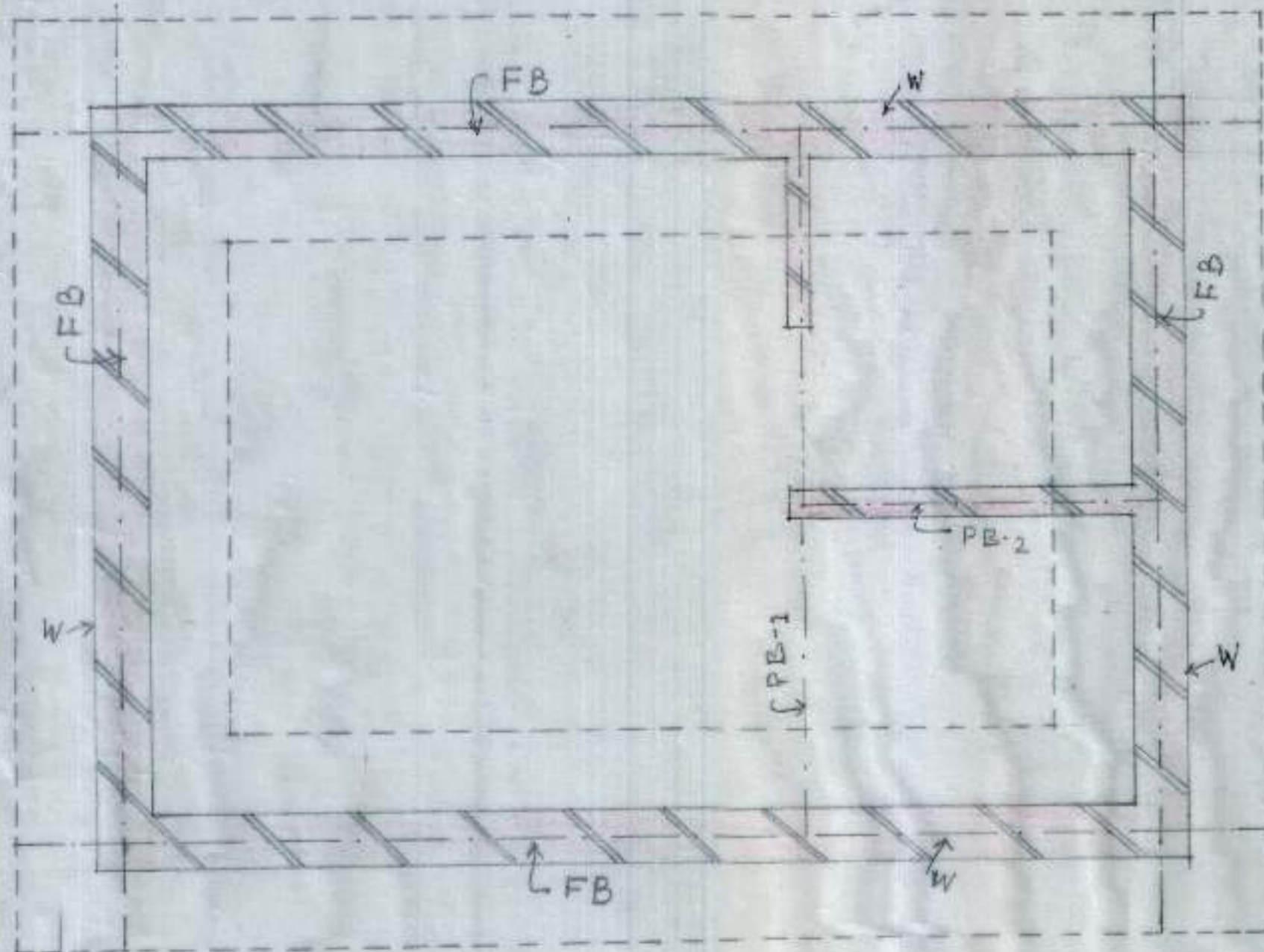
X-SEC. OF GATE COL.

|                             |
|-----------------------------|
| R/F IN GATE COL.            |
| 1 TO 6 = 12 mm $\bar{\Phi}$ |
| TIES. - 8 mm $\bar{\Phi}$   |
| @ 6" c/c TH. OUT.           |

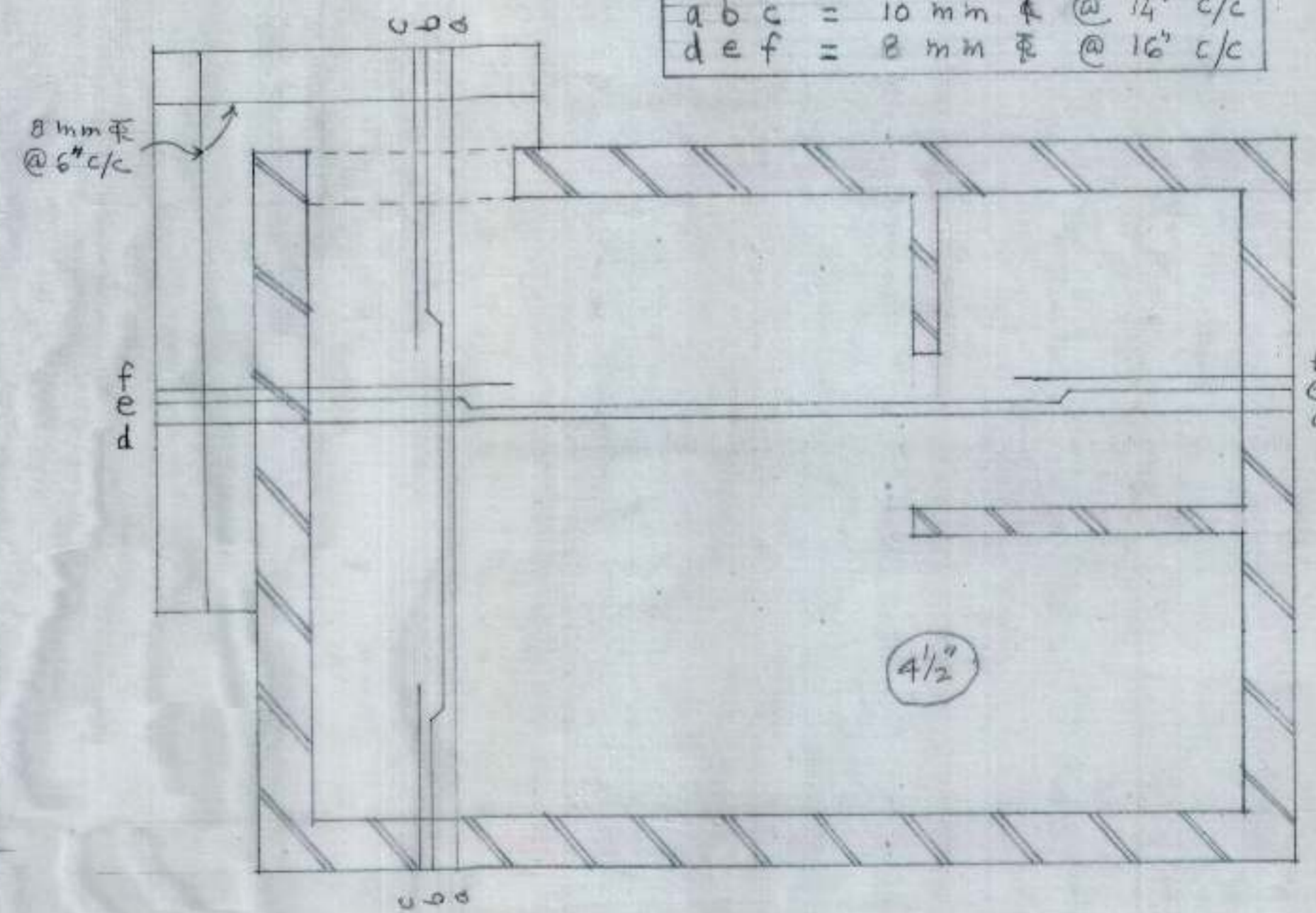
R/F IN PB-2

|                                   |
|-----------------------------------|
| 1 TO 4 = 16 mm $\bar{\Phi}$       |
| STPS. - 8 mm $\bar{\Phi}$ 2 LEGG. |
| VERT. STPS. @ 6" c/c TH. OUT.     |

|                                      |
|--------------------------------------|
| R/F IN ROOF SLAB 4 1/2" THICK        |
| a b c = 10 mm $\bar{\Phi}$ @ 14" c/c |
| d e f = 8 mm $\bar{\Phi}$ @ 16" c/c  |



FOUNDATION KEY PLAN



R/F IN ROOF SLAB 4 1/2 THICK

EE-I

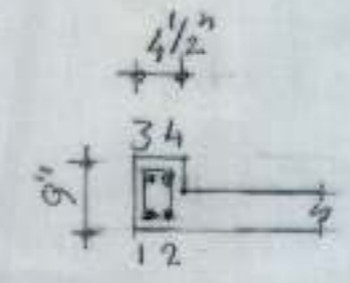
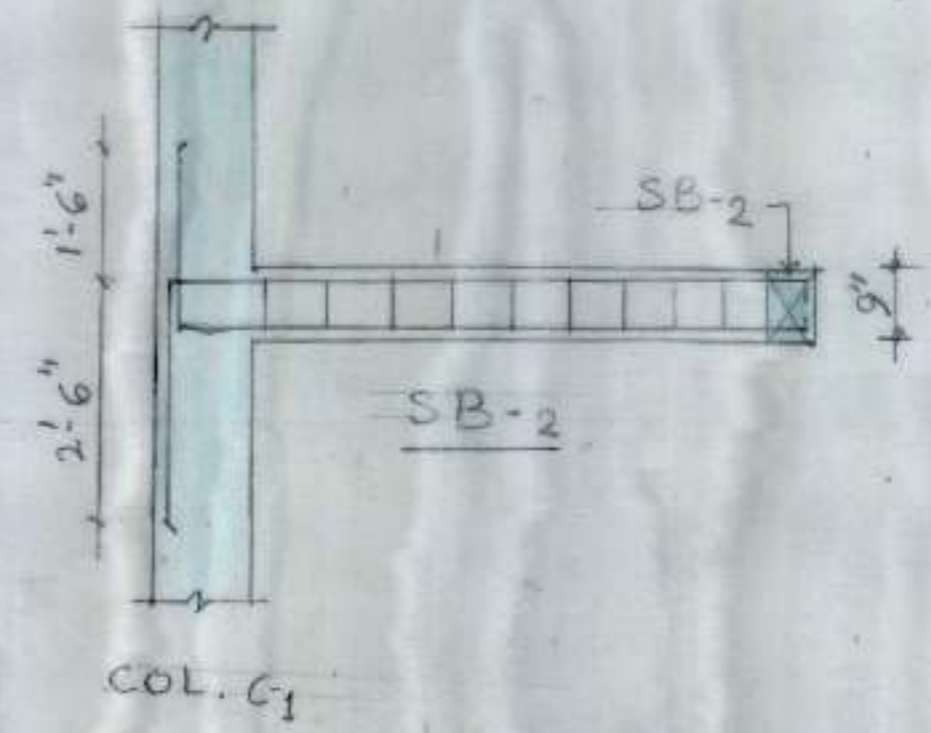
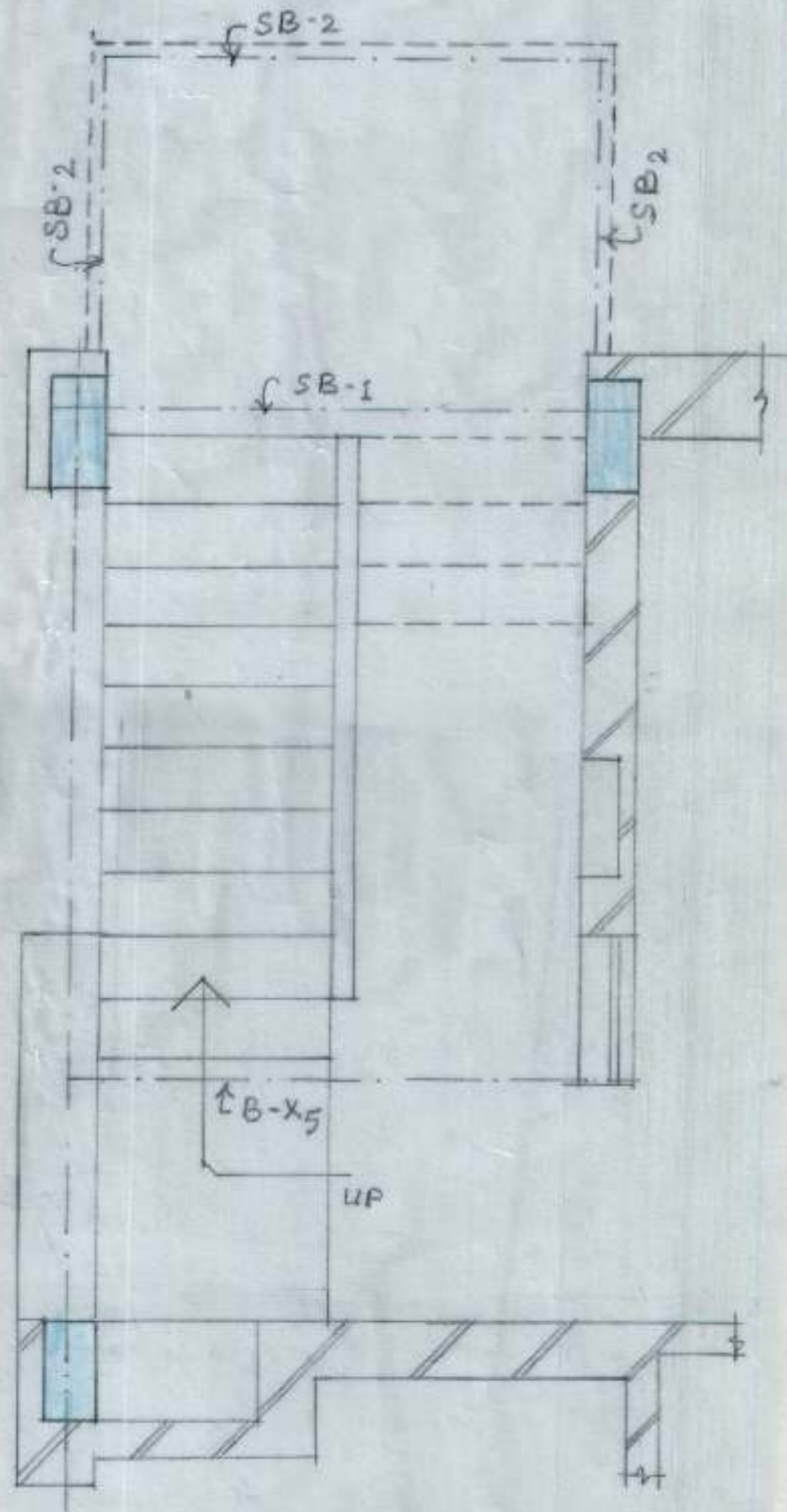
AE (D)

DRAWN BY

VOCATIONAL CENTRE FOR  
STREET CHILDREN AT  
MALOYA-II, CHANDIGARH.  
CHECK POST AND  
BOUNDARY WALL

|                  |                |                     |
|------------------|----------------|---------------------|
| DRG. NO.<br>02 A | JOB NO.<br>136 | DATE:-<br>FEB. 2009 |
|------------------|----------------|---------------------|

NOTE:-  
FOR STRUCTURAL NOTE REFER  
DRG. NO. 1, JOB NO. 137

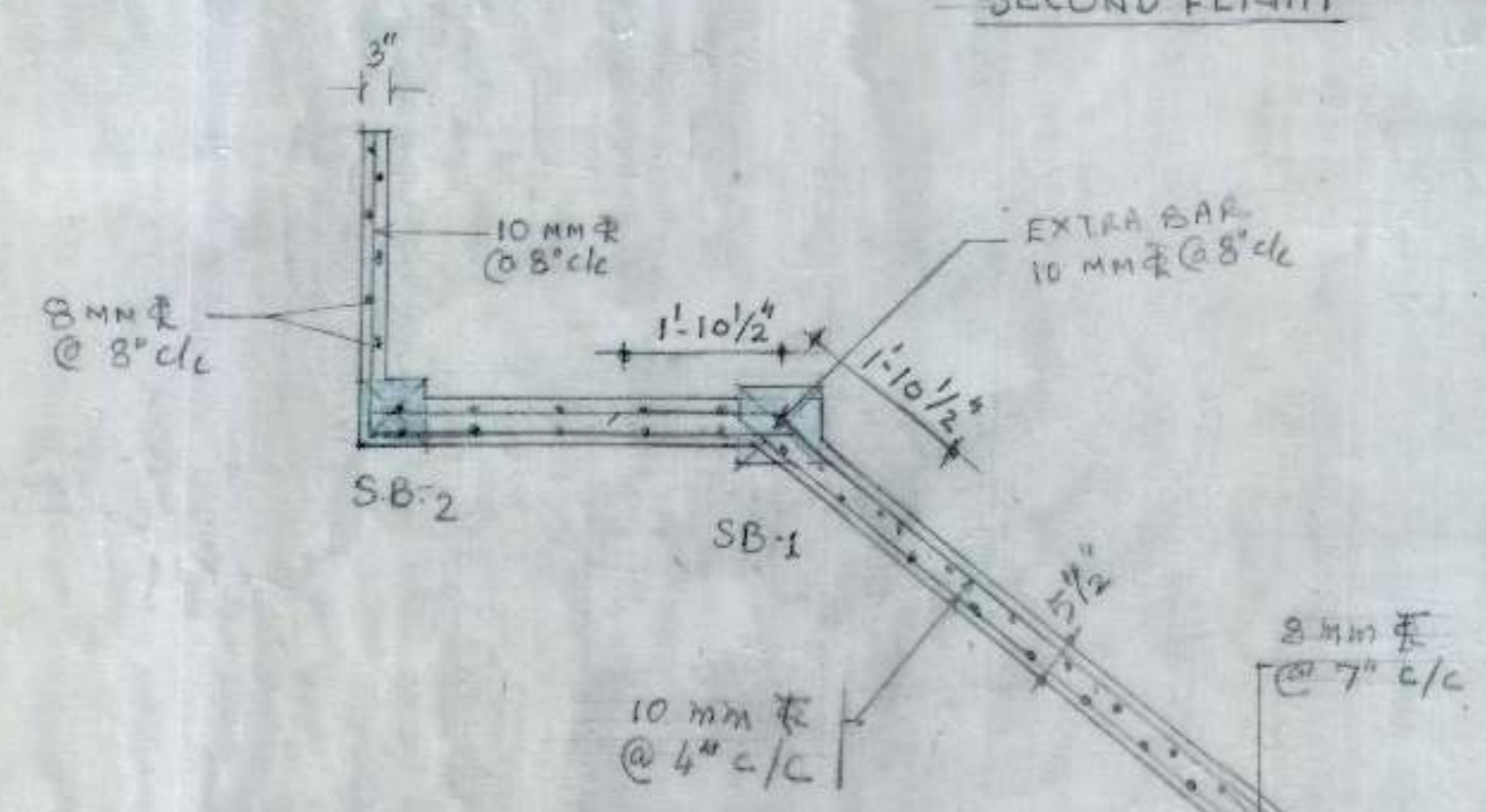


X-SEC. OF BEAM S-B-2

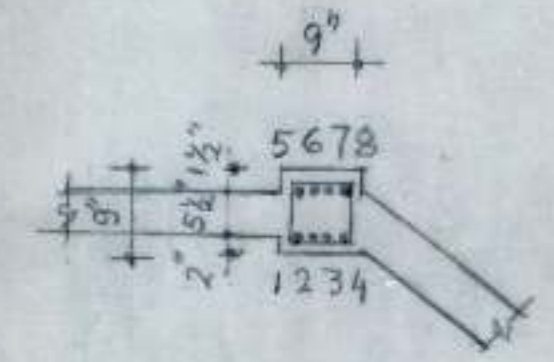
R/F. IN BEAM S-B-2  
1 TO 4 = 16 mm  $\Phi$   
STPS. - 8 mm  $\Phi$  2 LEGG.  
VERT. STPS. @ 4 1/2" c/c  
TH. OUT.



SECOND FLIGHT

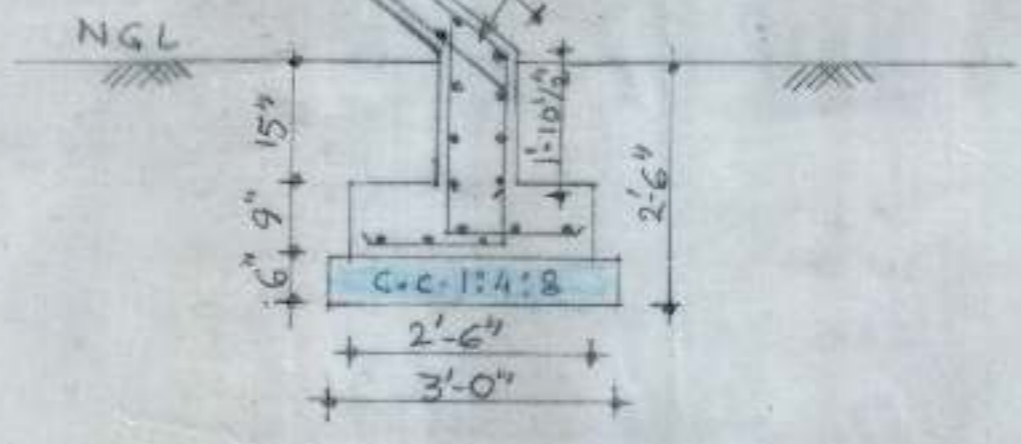


FIRST FLIGHT



X-SECTION OF BEAM S-B-1

R/F IN BEAM S-B-1  
1 TO 8 = 16 mm  $\Phi$   
STPS. - 8 mm  $\Phi$  2 LEGG.  
VERT. STPS. @ 4" c/c  
TH. OUT.



|   |                           |                  |
|---|---------------------------|------------------|
| E.E.-I/DESIGN <i>[Signature]</i>  |                           |                  |
| DRAWN BY <i>[Signature]</i>   | A.E.D. <i>[Signature]</i> |                  |
| STRUCTURAL DETAIL OF STAIR CASE   |                           |                  |
| VOCATIONAL CENTRE FOR STREET CHILDREN AT MALOYA-II, CHD. CO-ORDINATOR'S RESIDENCE |                           |                  |
| DRG. NO. 03   | JOB NO. 136               | DATE APRIL, 2009 |