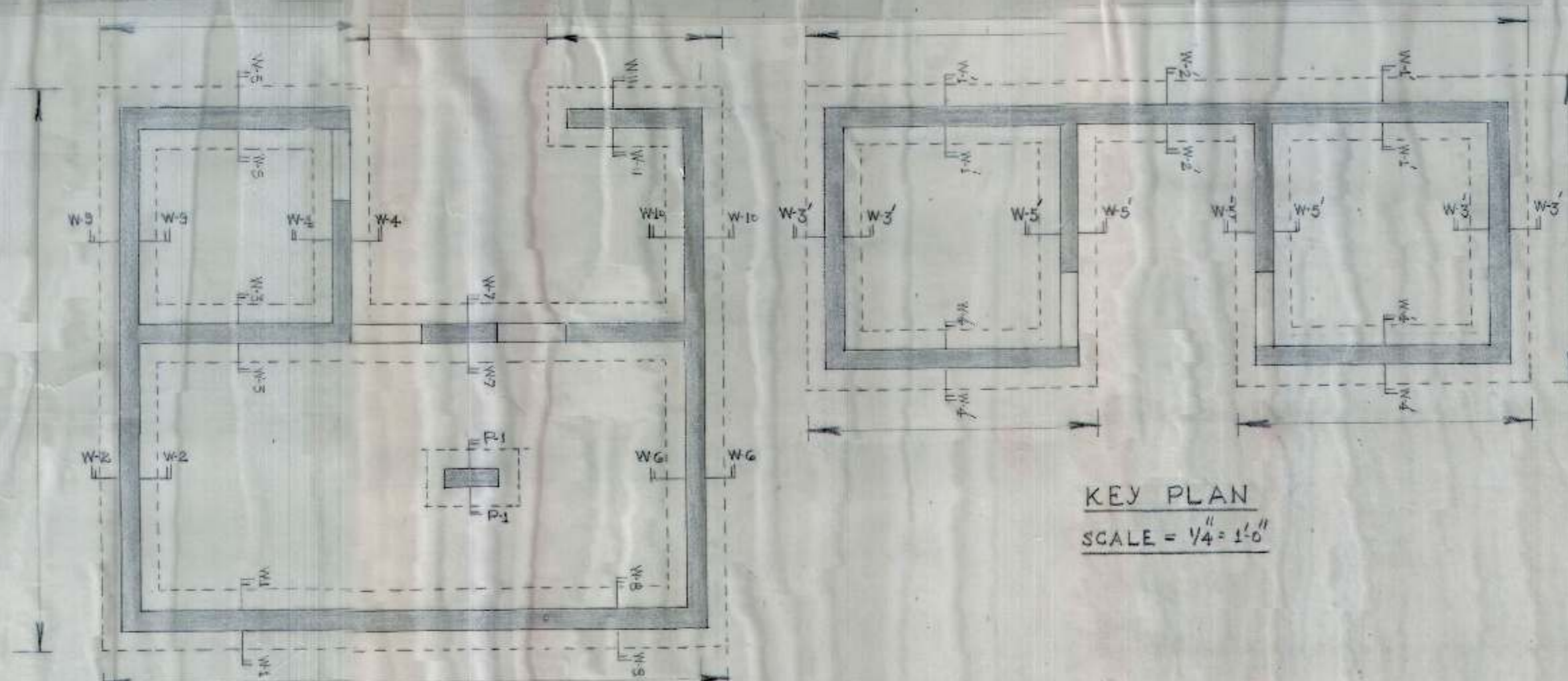
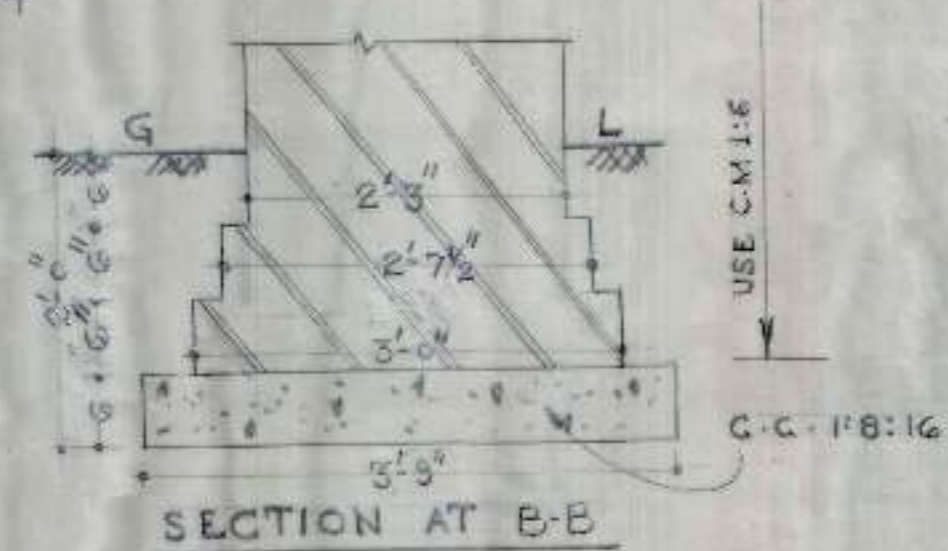


CHHB

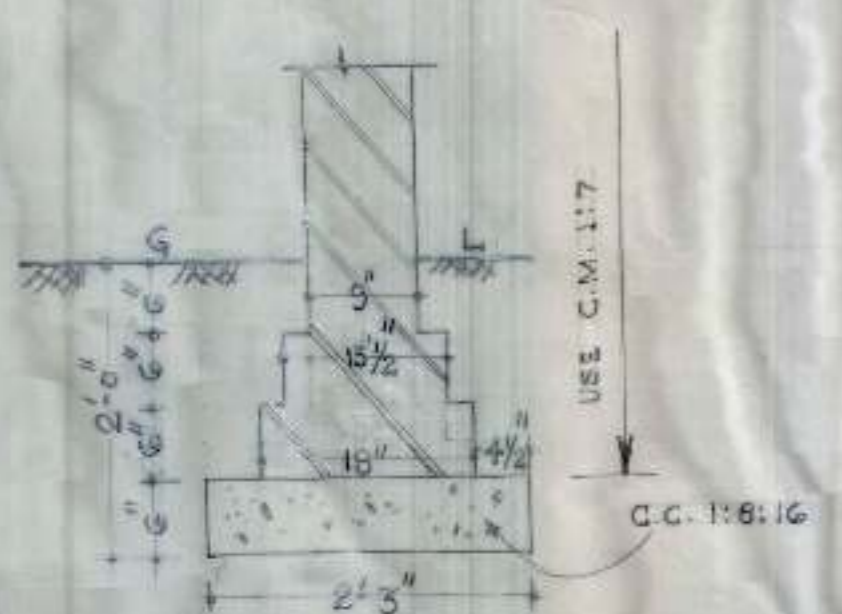


KEY PLAN
SCALE = 1/4" = 1'-0"

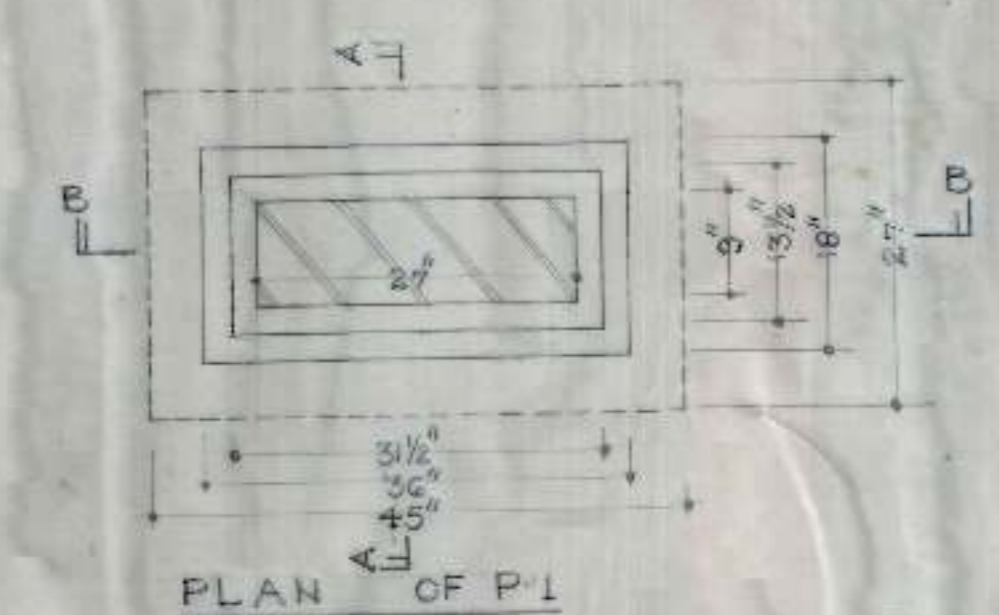
KEY PLAN
SCALE = 1/4" = 1'-0"



SECTION AT B-B



DETAIL OF W-1 TO W-11, W-3' TO W-5'
& SECTION AT A-A



PLAN OF P-1

S.No	NOTES
1.	FOR CENTRE LINE DIMENSIONS REFER ARCH. DRG NO. 2 JOB NO. 43.
2.	SUITABLE D.P.C MAY BE PROVIDED AT SITE.
3.	DIMENSIONS ARE TO BE READ AND NOT TO BE SCALED OFF.
4.	STRUCTURAL SIZES AS SHOWN IN THIS DRG. SHOULD BE ADOPTED INSPITE OF ANY CONTRARY SIZES SHOWN IN THE ARCH. DRG.
5.	THE SAFE BEARING CAPACITY OF SOIL HAS BEEN ASSUMED AS 1-0 T/D' WHICH SHOULD BE ENSURED AT SITE.
6.	THE CUBE STRENGTH OF CONG. POURED AT SITE (FIELD STRENGTH) AT 28 DAYS SHALL NOT BE LESS THAN 2500 LBS/D' MIN. AND CONG. MIX. NOT LEANER THAN 1:2:4.
7.	JAMBS OF 3"x3" & 3"x13 1/2" SIZE TO BE BUILT IN C.M. 1:1:4.

OFFICE OF THE SUPERINTENDING ENGINEER
CHANDIGARH HOUSING BOARD CHANDIGARH

<i>Jatinder</i> DRN BY	STORE BUILDING IN INDUSTRIAL AR- -EA (OFFICE BLOCK)	DRG NO. 1
SCALE 3/4" = 1'-0"	DETAIL OF FOUNDATIONS	JOB NO. 25
<i>Binder</i> A.E.D. 5.9.80	<i>CSS</i> E.E.D. 6/9	<i>Sharma</i> S.E. 6.9.80

C.H.B.

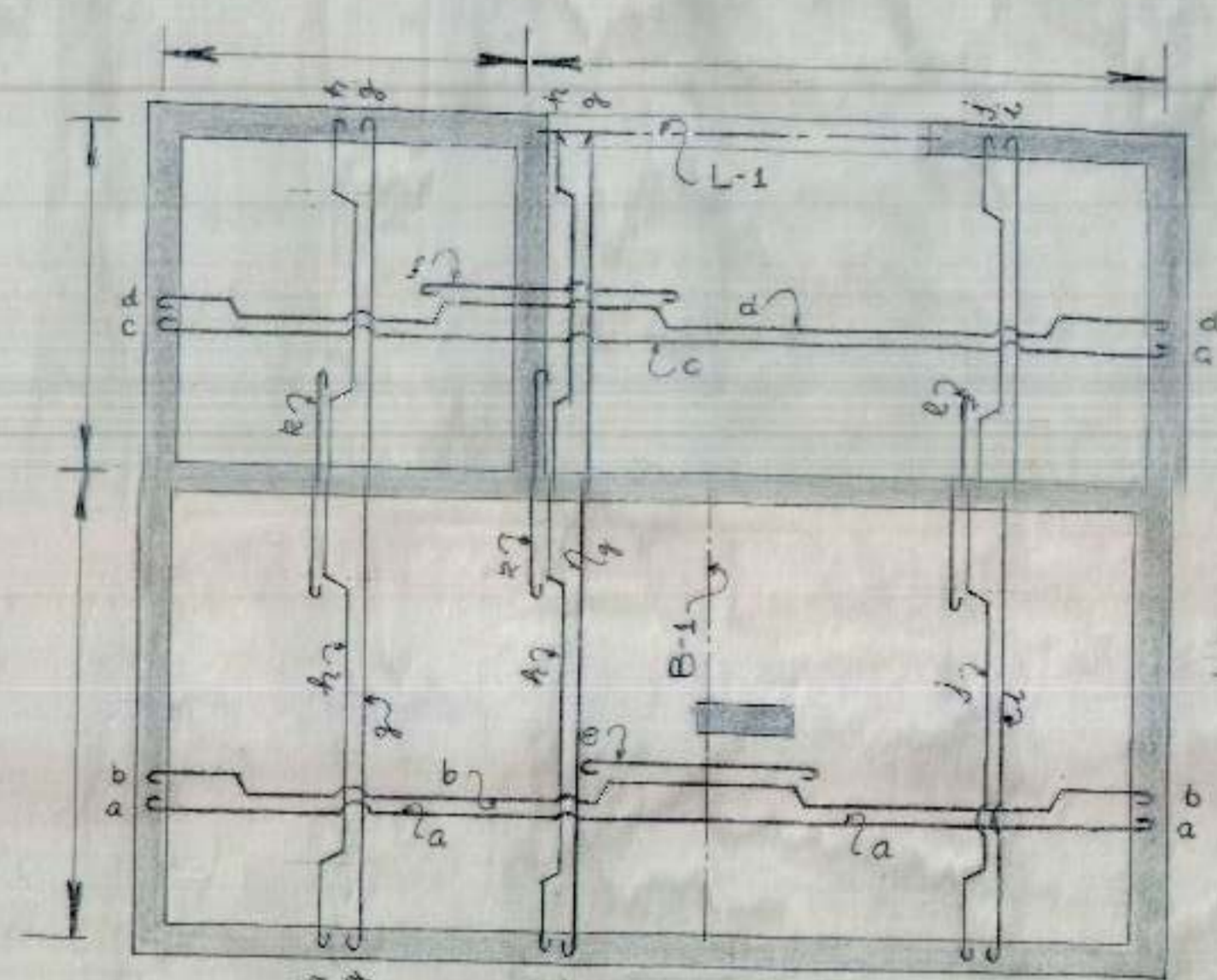
S.NO. NOTES

- FOR CENTRE LINE DIMENSIONS REFER ARCH. DRG NO. 2, JOB NO. 43.
- DIMENSIONS ARE TO BE READ & NOT TO BE SCALED OFF.
- CLEAR COVER FOR BEAM 1", FOR SLAB 1/2".
- STRUCTURAL SIZES SHOWN IN THIS DRG. SHOULD BE ADOPTED INSPITE OF ANY CONTRARY SIZES SHOWN IN ARCH. DRG.
- THE CURE STRENGTH OF CONG. IN SITU AT 28 DAYS SHALL NOT BE LESS THAN 2200 lbs/sq. INCH AND CONG. MIX. NOT LEANER THAN 1:2:4.
- SUITABLE LINTELS MAY BE PROVIDED OVER OPENINGS SUCH AS DOORS/WINDOWS.
- ANCHORAGE REINFORCEMENT SHALL BE 40 TIMES THE DIAMETER WHEREVER REQUIRED.
- DISCREPANCIES BETWEEN DETAILS SHOWN IN THIS DRG. AND ARCH. DRGS. IF ANY SHOULD BE GOT CLARIFIED FROM THIS OFFICE BEFORE ADOPTING THIS DESIGN.

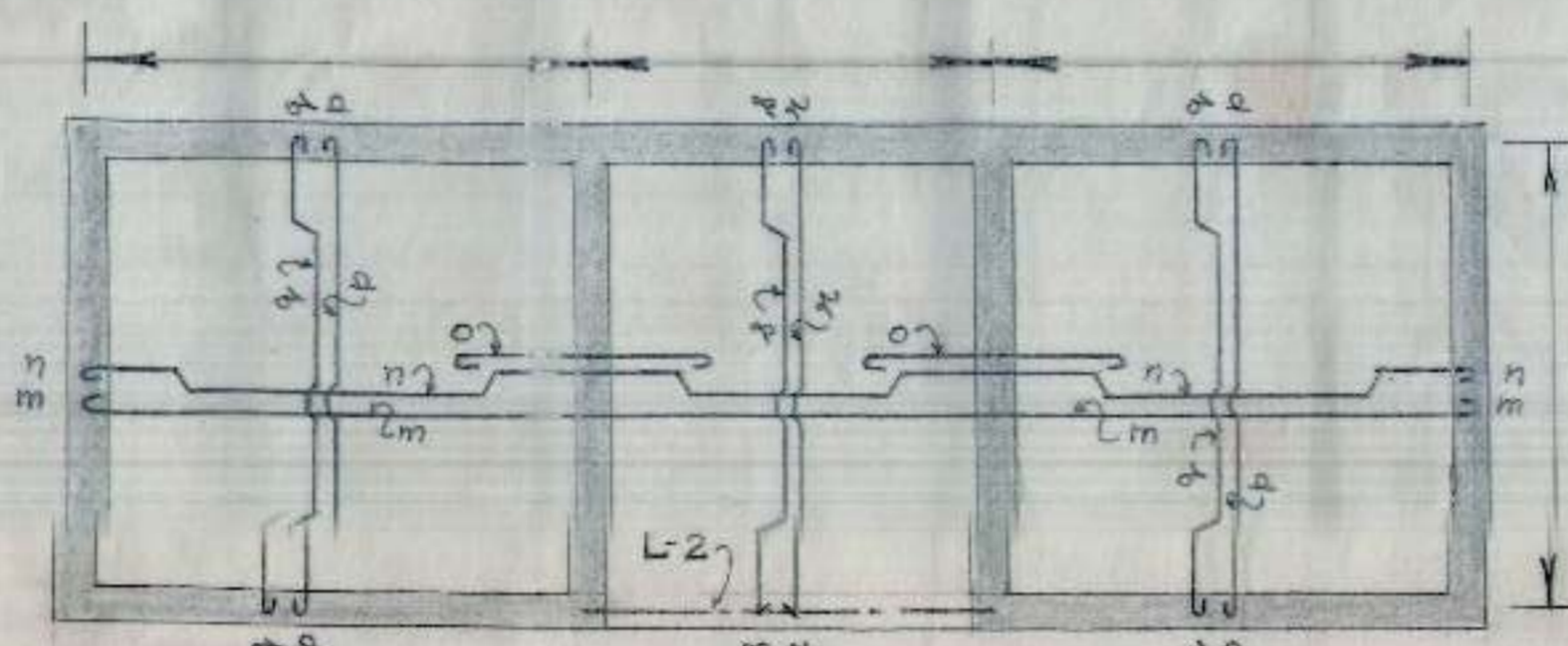
OFFICE OF THE SUPERINTENDING ENGINEER
CHANDIGARH HOUSING BOARD CHANDIGARH

DRN BY <i>Jatinder</i>	STORE BUILDING IN INDUSTRIAL AREA	DRG NO. 2
SCALE 3/4"=1'-0"	DETAIL OF REINFORCEMENT IN BEAMS, LINTELS AND SLAB	JOB NO. 25

Pandey A.E.D. 8.7.80
Chand E.E.D.
Munawar S.E. 10.9.80



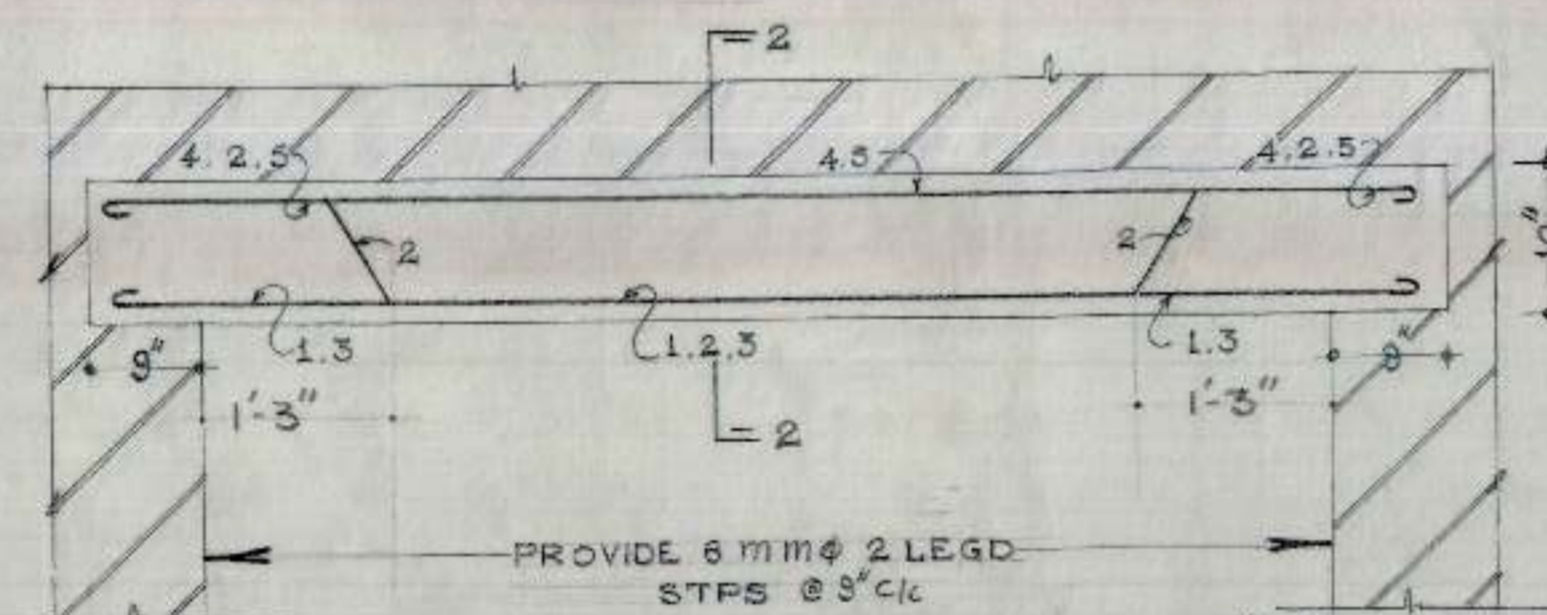
KEY PLAN
SCALE = 1/4" = 1'-0"



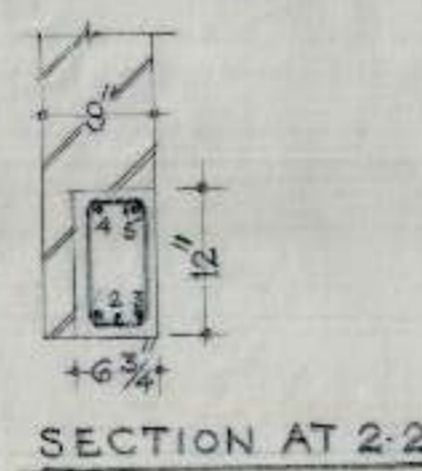
THICKNESS OF SLAB = 4"

KEY PLAN
SCALE = 1/4" = 1'-0"

SCHEDULE OF BARS IN SLAB			
a	6 mm φ @ 15" c/c	j	6 mm φ @ 15" c/c
b	10 mm φ @ 15" c/c	k	12 mm φ @ 15" c/c
c	6 mm φ @ 15" c/c	l	10 mm φ @ 15" c/c
d	6 mm φ @ 15" c/c	m	6 mm φ @ 15" c/c
e	10 mm φ @ 15" c/c	n	6 mm φ @ 15" c/c
f	10 mm φ @ 15" c/c	o	10 mm φ @ 15" c/c
g	6 mm φ @ 15" c/c	p	6 mm φ @ 15" c/c
h	10 mm φ @ 15" c/c	q	6 mm φ @ 15" c/c
i	6 mm φ @ 15" c/c	r	6 mm φ @ 15" c/c
		s	6 mm φ @ 15" c/c
		t	6 mm φ @ 15" c/c

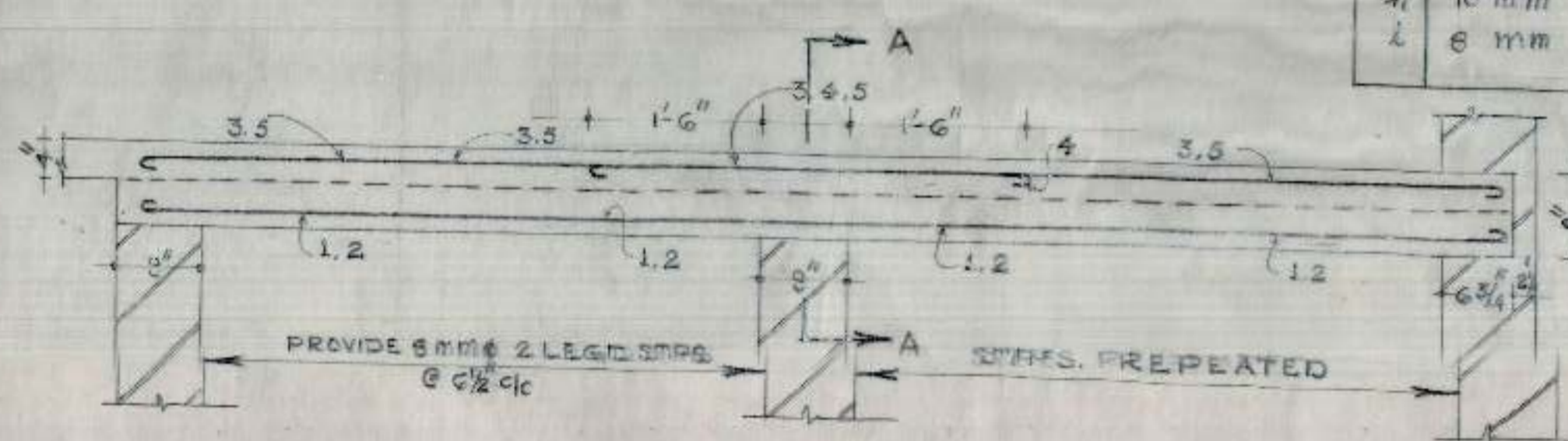


L-SECTION OF LINTEL L-2 (6 3/4 x 12)

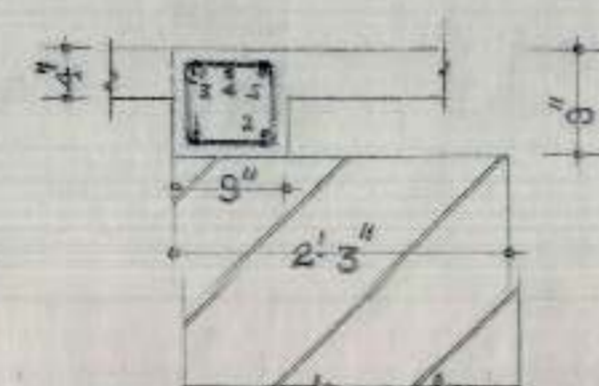


SECTION AT 2-2

SCHEDULE OF BARS IN L-2	
1,3	2 NOS 16 mm φ
2,4,5	3 NOS 12 mm φ

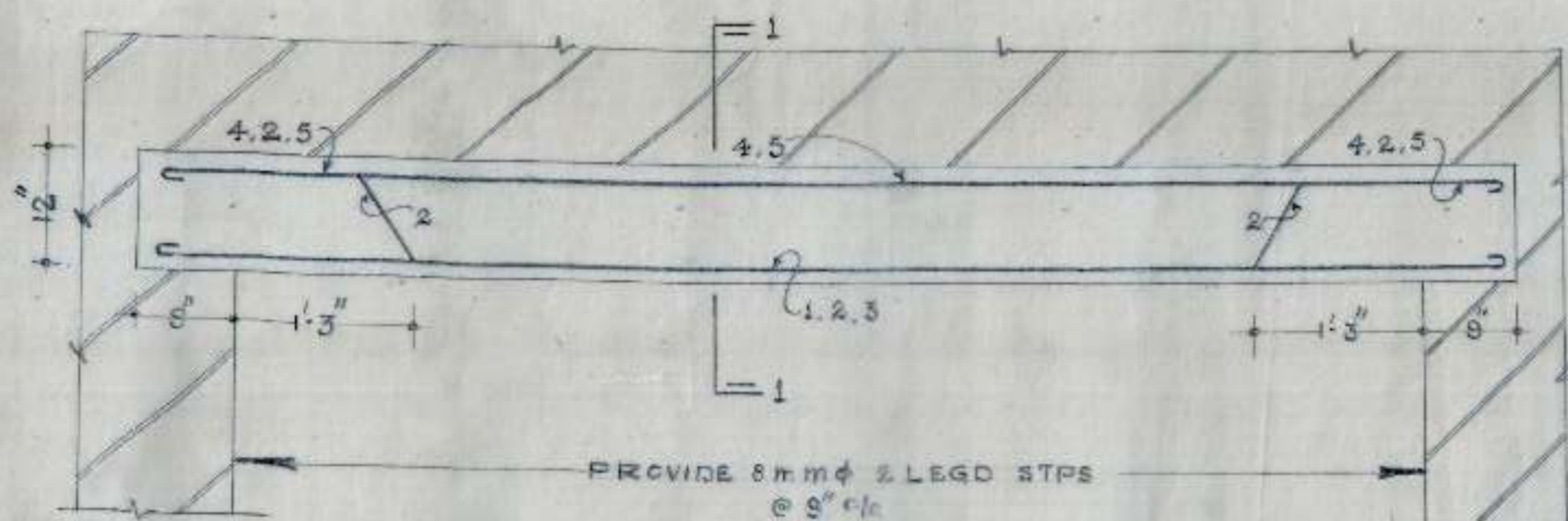


L-SECTION OF BEAM B-1 (3' x 8')

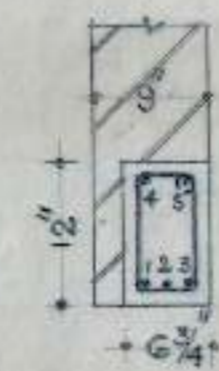


SECTION AT A-A

SCHEDULE OF BARS IN B-1	
1,2,3,4,5	5 NOS 12 mm φ



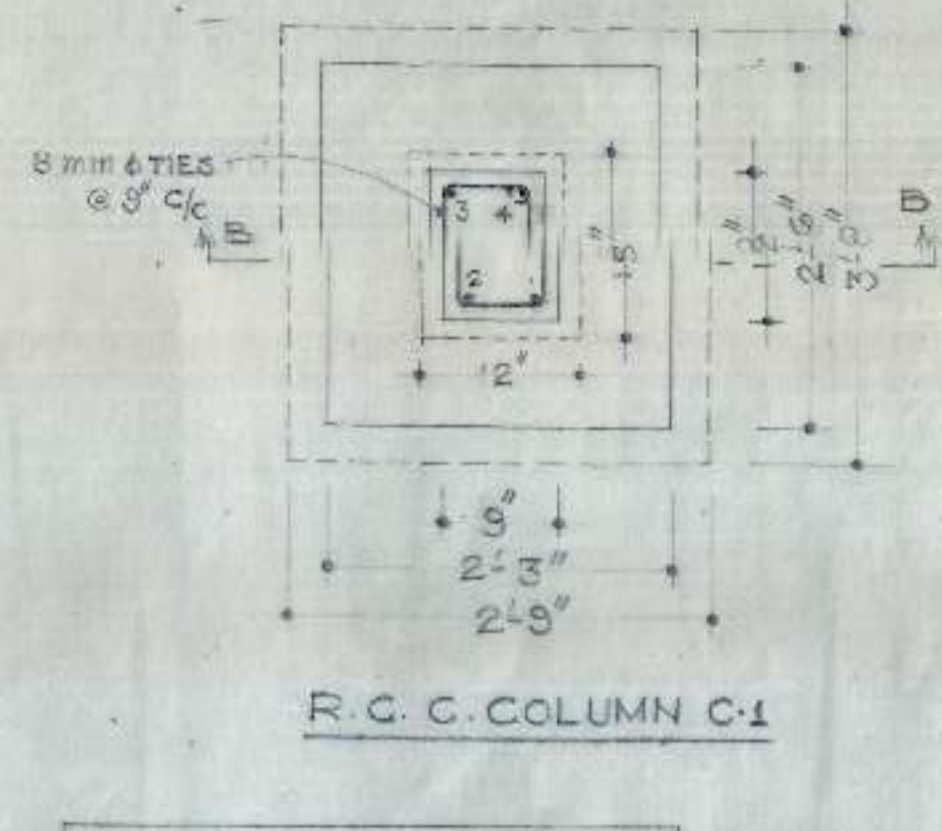
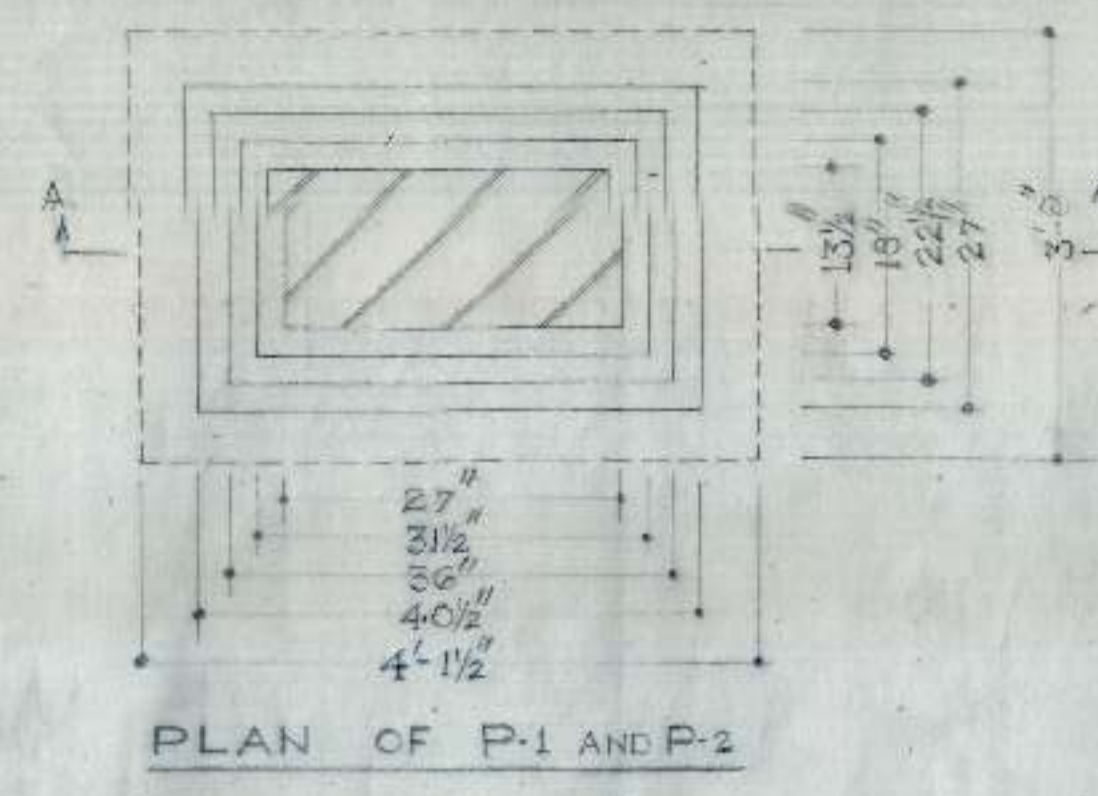
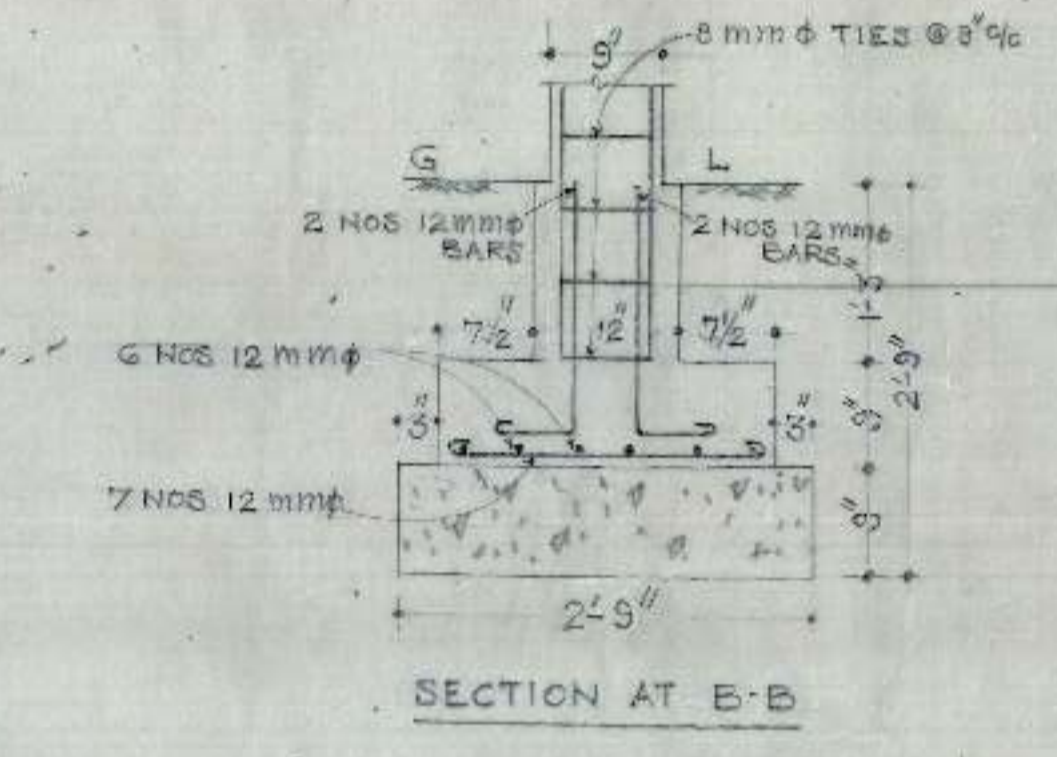
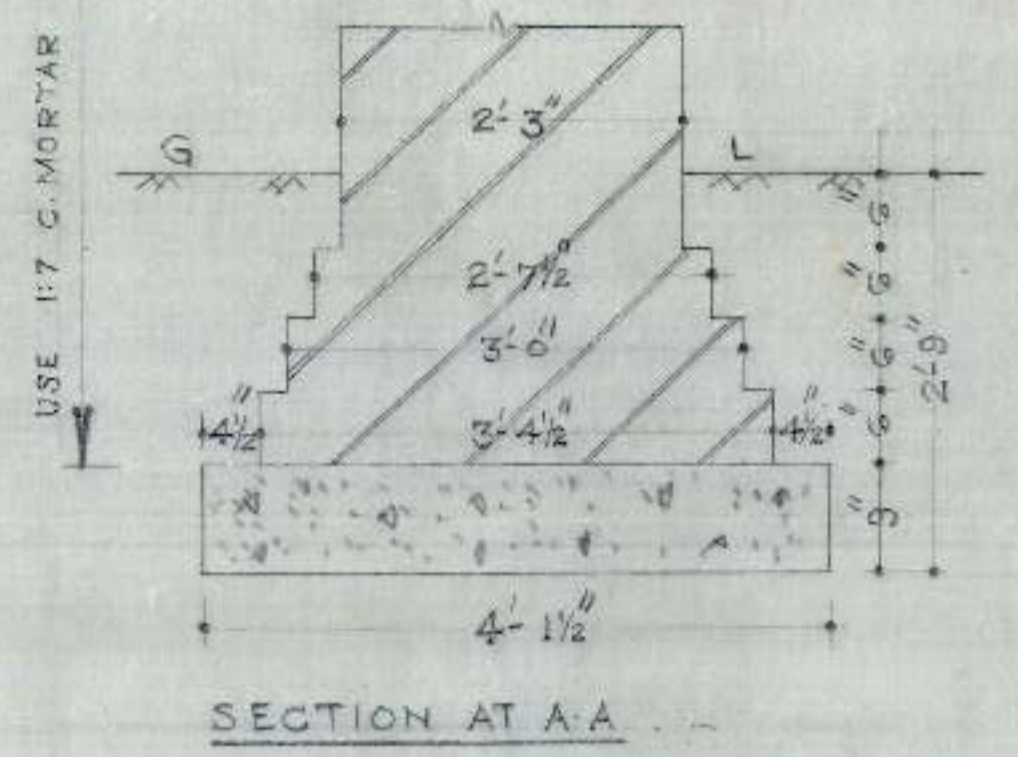
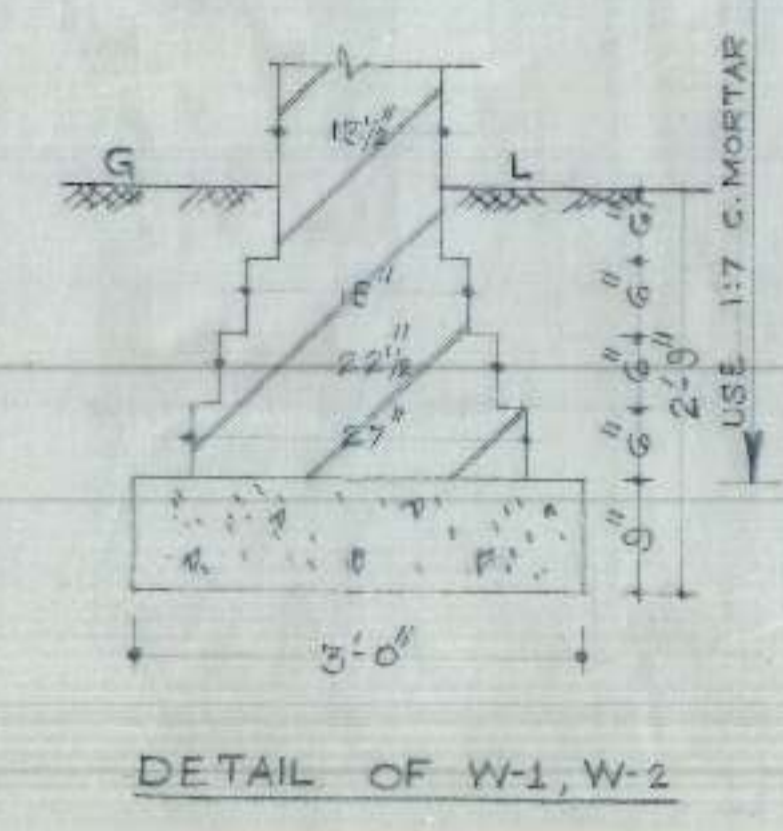
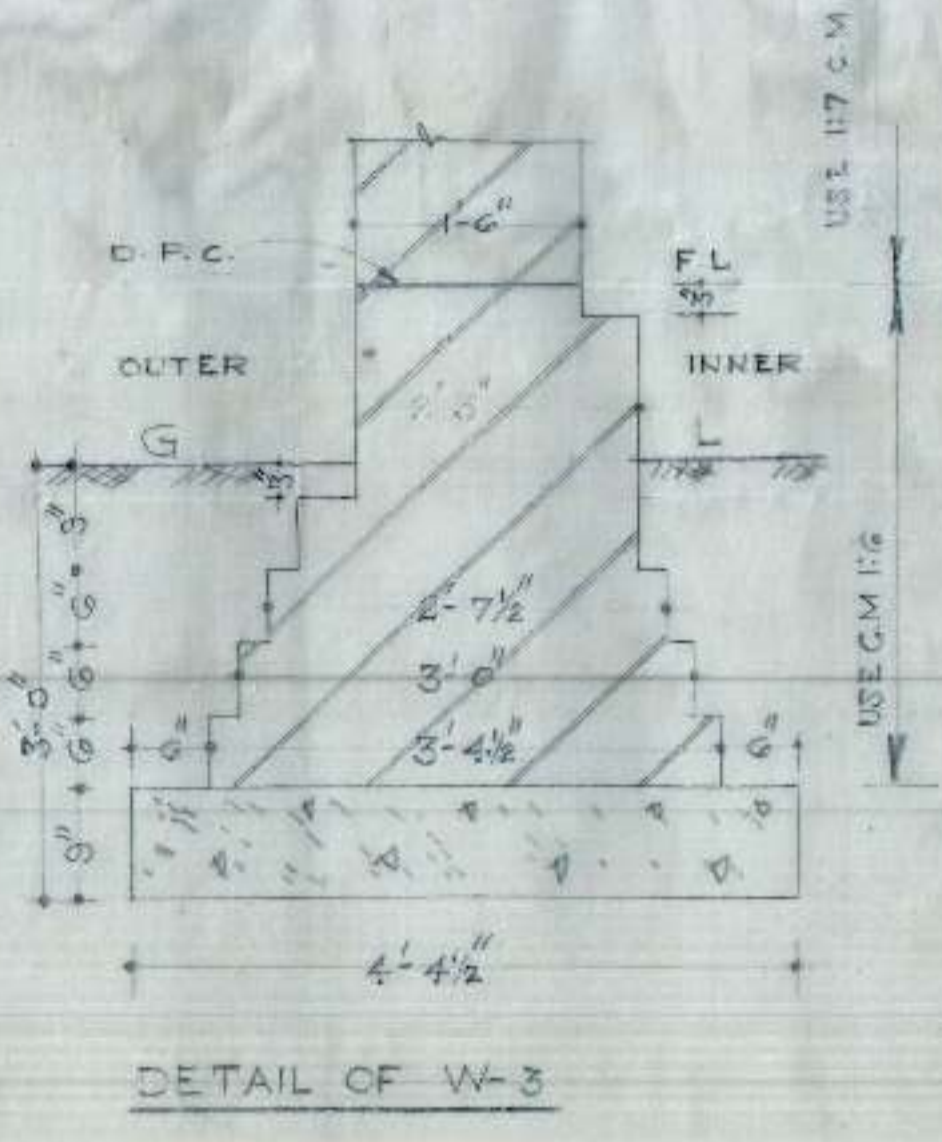
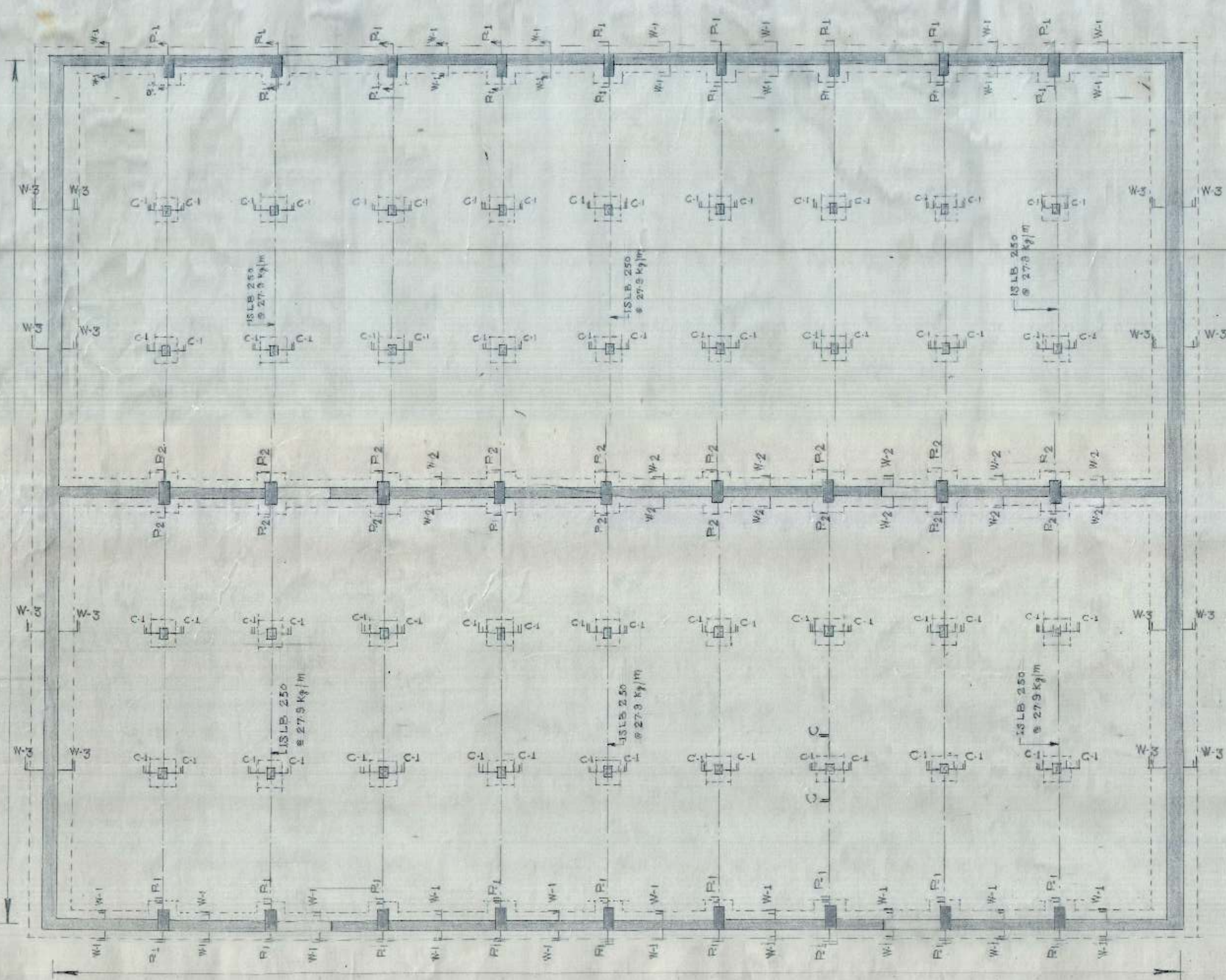
L-SECTION OF LINTEL L-1 (6 3/4 x 12)



SECTION AT 1-1

SCHEDULE OF BARS IN L-1	
1 TO 5	5 NOS 16 mm φ

C.H.B



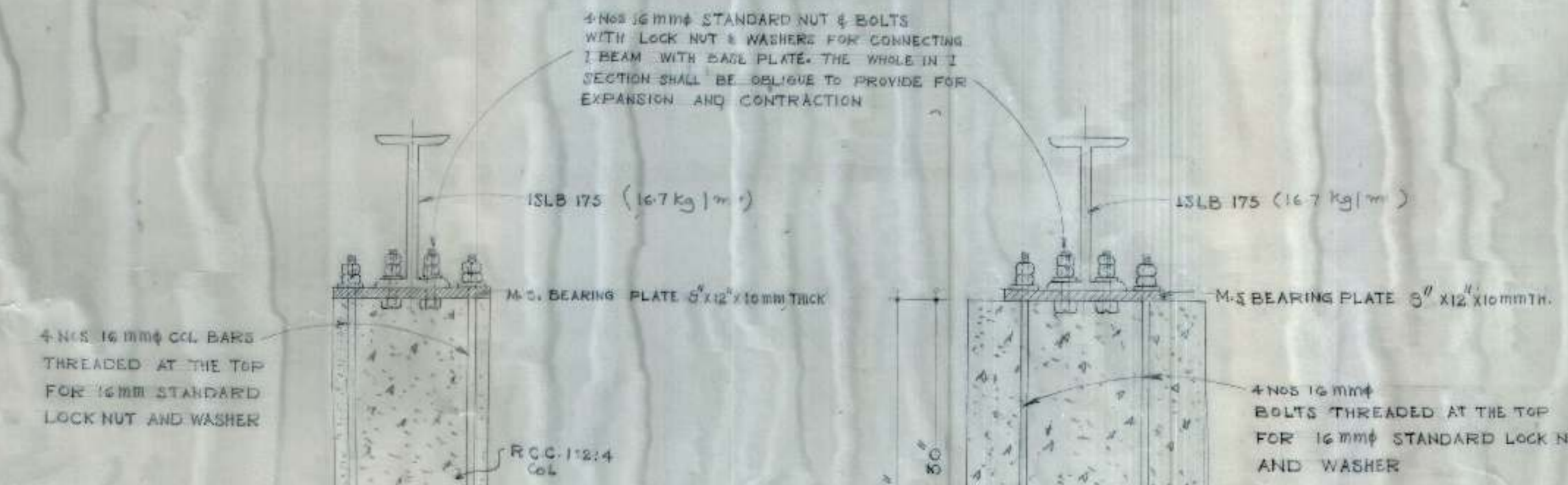
SCHEDULE OF BARS IN C-1

1.2.3.4	4 Nos 16 mm ϕ
---------	--------------------

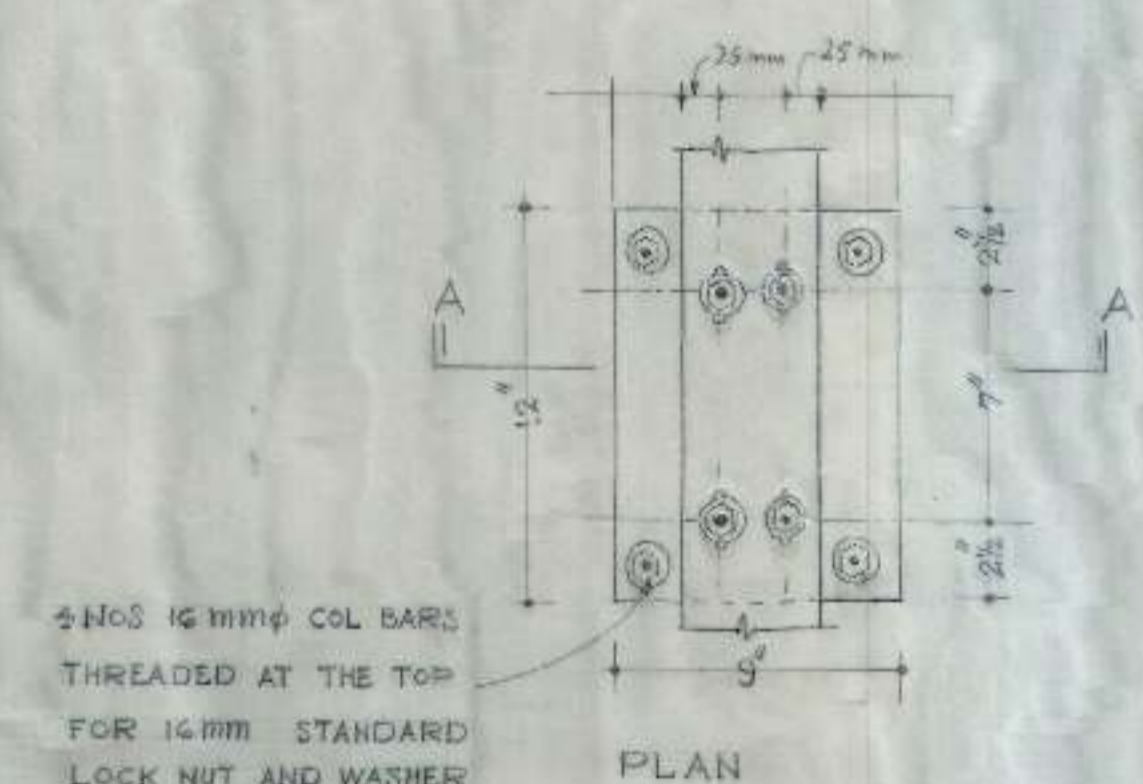
- NOTES
1. FOR CENTRE LINE DIMENSIONS REFER ARCH. DRG. NO. 4, JOB NO. 43.
 2. SUITABLE D.P.C. MAY BE PROVIDED AT SITE.
 3. DIMENSIONS ARE TO BE READ AND NOT TO BE SCALED OFF.
 4. STRUCTURAL SIZES AS SHOWN IN THIS DRG. SHOULD BE ADOPTED INSPIE OF ANY CONTRARY SIZES SHOWN IN THE ARCH. DRG.
 5. THE SAFE BEARING CAPACITY OF SOIL HAS BEEN ASSUMED AS 0.875 σ WHICH SHOULD BE ENSURED AT SITE.
 6. THE CUBE STRENGTH OF CONG. POURED AT SITE (FIELD STRENGTH) AT 28 DAYS SHALL NOT BE LESS THAN 2500 LBS/SQ. INCH AND CONG. MIX NOT LEANER THAN 1:2:4.
 7. JAMBS OF 8"x9" ϕ 5"x13 1/2" SIZE TO BE BUILT IN C.M. 1:4.
 8. THE LONGITUDINAL BARS IN COLUMN AND HORIZONTAL BARS IN FOOTING SHALL HAVE A CLEAR COVER OF 1 1/2".

OFFICE OF THE SUPERINTENDING ENGINEER
CHADIGARH HOUSING BOARD CHANDIGARH.

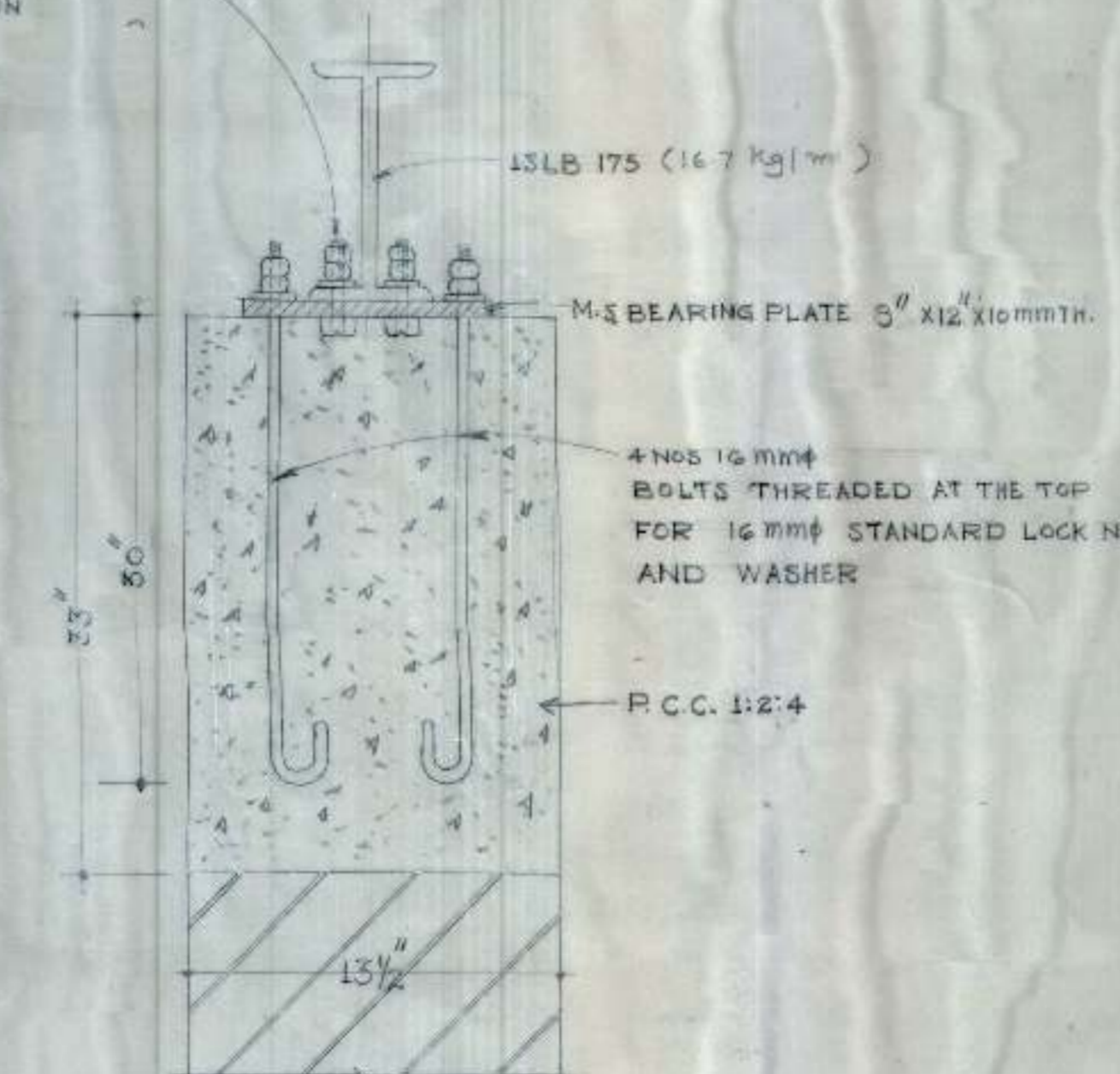
Drawn BY Jatinder	STORE BUILDING IN INDUSTRIAL AREA	DRG No. 3
SCALE 3/4" = 1'-0"	STRUCTURE DRAWING	JOB NO. 25
A.E.D.	E.E.D.	S.E.



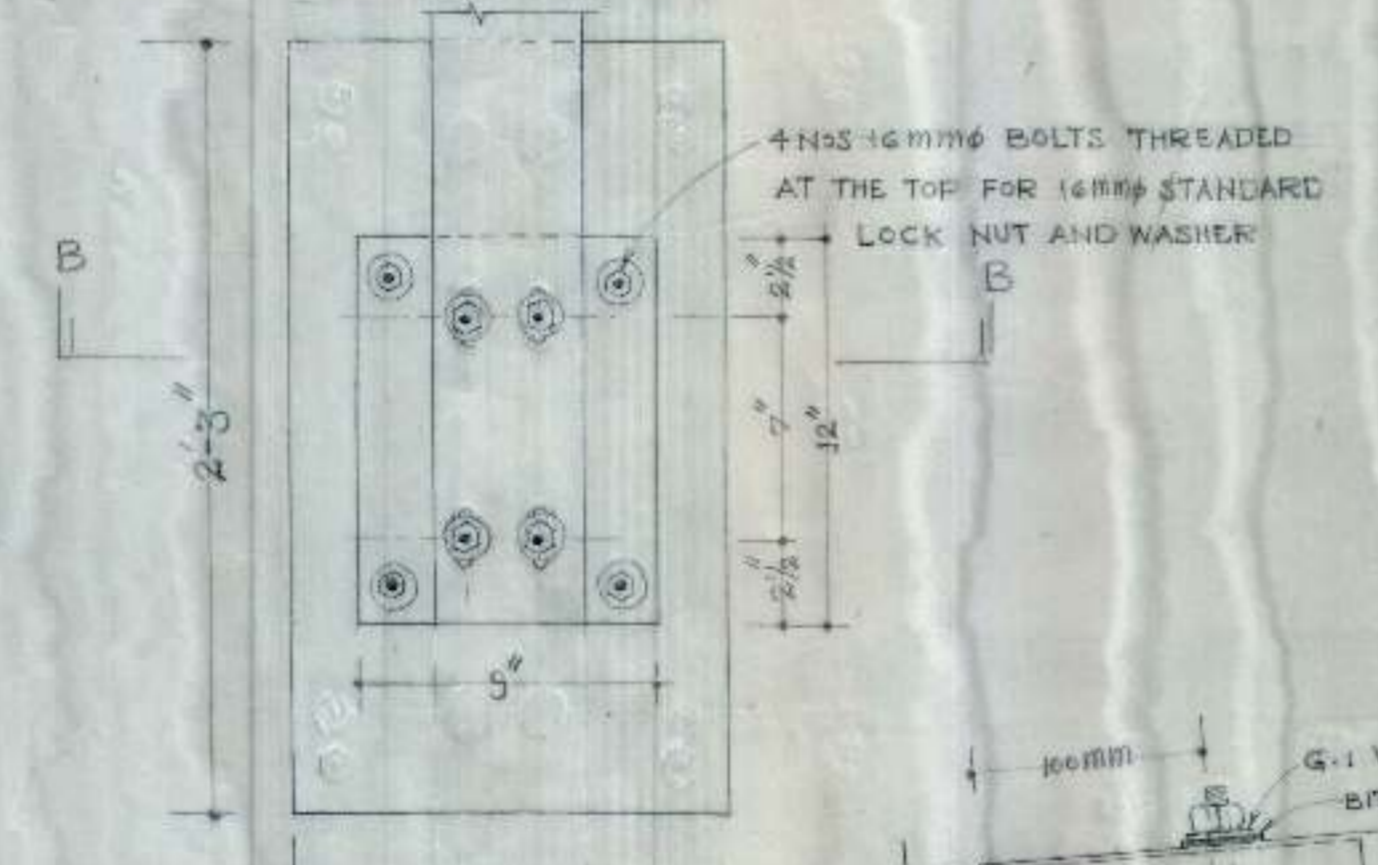
SECTION AT A-A



CONNECTION OF GIRDER WITH COLUMN

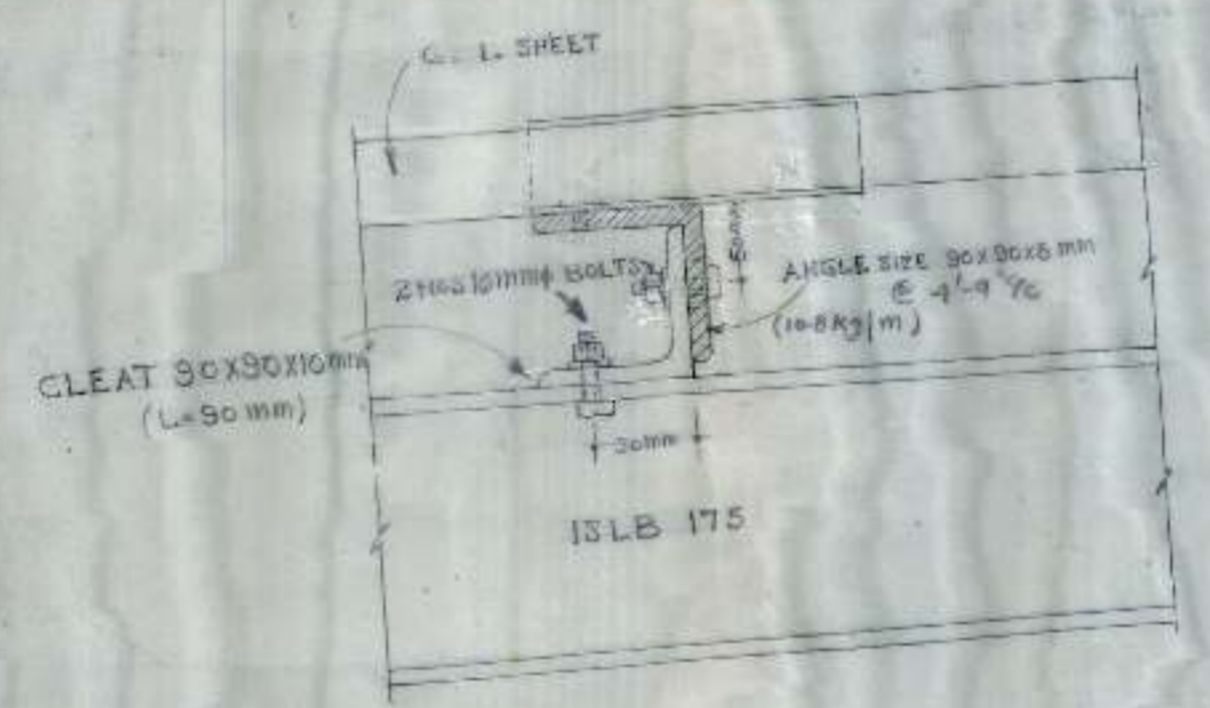


SECTION AT B-B



CONNECTION OF GIRDER END BK. PILLAR

PLAN



TYPICAL DETAIL OF GIRDER, PURLIN AND CLEAT ANGLE



CONNECTION OF PURLIN WITH A.C. SHEET



DETAIL AT RIDGE

S.No	NOTES
1	FOR CENTRE LINE DIMENSIONS REFER TO ARCH. DRAWING No. 4 JOB No. 43.

OFFICE OF THE SUPERINTENDING ENGINEER CHANDIGARH HOUSING BOARD CHANDIGARH.		
DRN BY <i>Jatinder</i>	STORE BUILDING (IN INDUSTRIAL AREA CHD.)	DRG No. 4
SCALE	DETAIL OF STEEL	JOB No. 25
<i>Pomangia</i> A.E.D.	<i>C. S. Dhillon</i> E.E.D.	<i>Sharma</i> S.E.