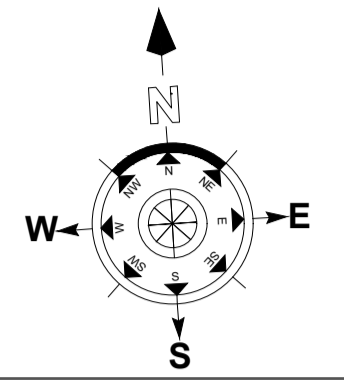


DEPARTMENT OF  
URBAN PLANNING  
CHANDIGARH ADMN.



NOTES:  
 • THIS DRAWING IS PREPARED ON THE BASIS OF SURVEY PLAN SUPPLIED BY CHANDIGARH HOUSING BOARD VIDE LETTER MEMO NO. EE/VIC/494/2019 ON DATED 16.04.2019.  
 • MINIMUM 35 MT. OFFSET OF BUILDINGS FROM CENTER OF THE PYLONS WILL BE MANDATORY TOWARDS PLOTS ABUTTING OUTER ROAD ON WEST SIDE (220 KV HIGH TENSION LINE).  
 • LOCATION OF GATES HAS BEEN INDICATED AS PER APPROVED CIRCULATION PLAN OF IT HABITAT, R.G.C.T.P. CHANDIGARH BEARING DRAWING NO 326, JOB NO M-16, DATED 25.09.2017.

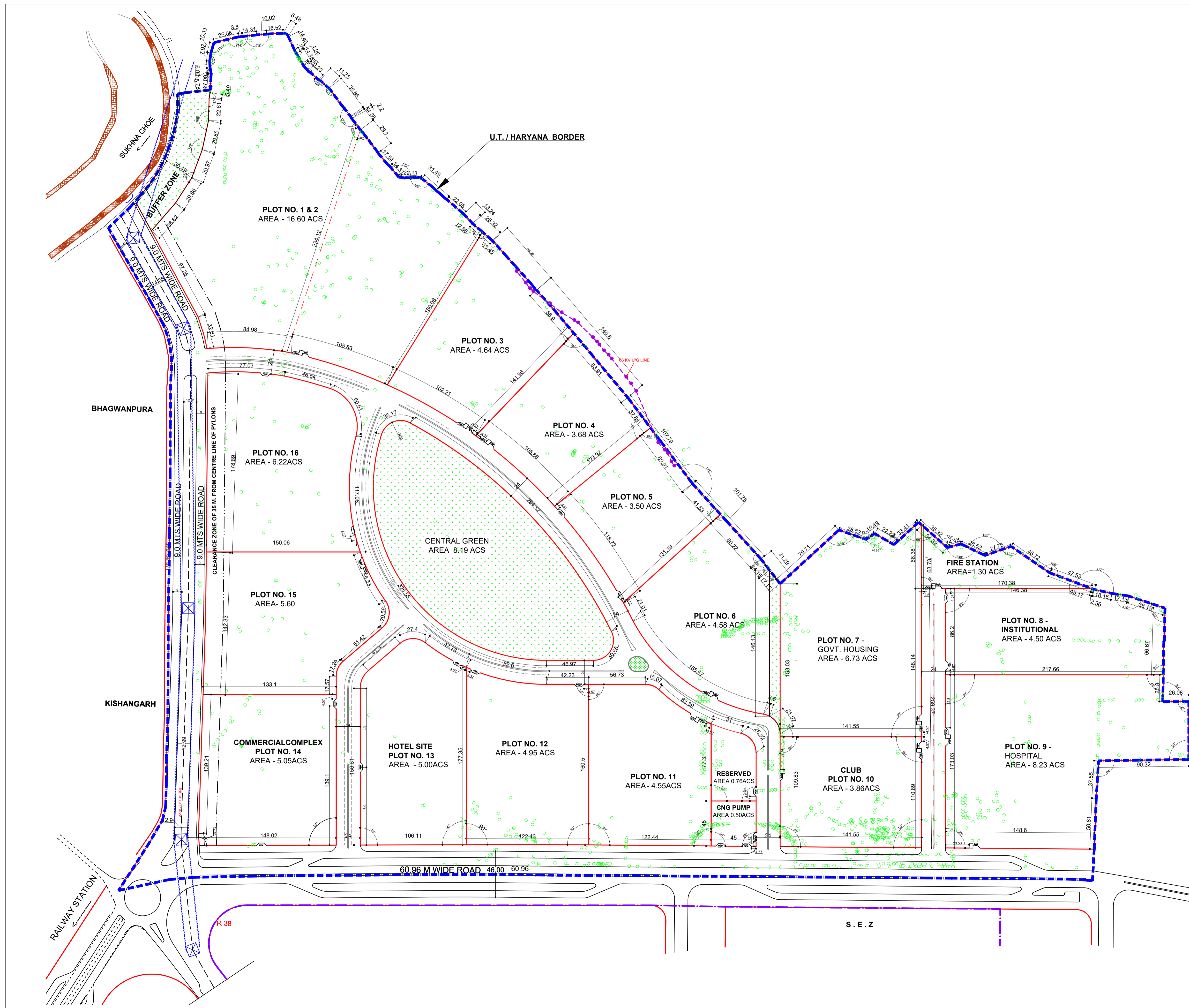
LEGEND:-

	SCHEME BOUNDARY
	PYLONS
	CENTER LINE OF PYLONS.
	CLEARANCE ZONE OF 35 M. FROM CENTRE LINE OF PYLONS
	66 KV LINE U.G
	ENTRY/EXIT GATES

PROPOSED LANDUSE DISTRIBUTION

S.No	DETAILS OF LANDUSE	AREA In Acres	%
1	TOTAL AREA OF SITE	123.79	100
2	AREA OF SITE EXCLUDING EXTERNAL ROADS	110.63	
3	RESIDENTIAL	61.05	49.32
	GROUP HOUSING	54.37	43.88
	GOVERNMENT HOUSING	6.73	5.44
4	PUBLIC / SEMI- PUBLIC USE	16.59	13.40
	CLUB	3.96	3.12
	HOSPITAL	8.23	6.65
	SCHOOL	4.5	3.64
5	COMMERCIAL USE	10.55	8.52
	HOTEL	5.00	4.04
	CNG PUMP	0.50	0.40
	COMMERCIAL COMPLEX	5.05	4.08
6	SERVICES	1.30	1.05
	FIRE STATION	1.30	1.05
7	GREEN / BUFFER	9.65	7.80
8	RESERVED AREA	0.76	0.61
9	AREA UNDER ROADS	23.89	
	INTERNAL ROADS AND OPEN	10.73	8.67
	EXTERNAL ROADS	13.16	10.63
		123.79	100.00

NOTE :-  
 • THIS DRAWING HAS BEEN APPROVED BY HG-THE ADMINISTRATOR, U.T CHANDIGARH ON DATED:-22.10.2019. (ON FILE I-53(A)).  
 • THIS DRAWING SUPERCEDES THE PREVIOUS DRG. NO. 320, JOB NO M-16, DATED-15.06.2017.



CHIEF ARCHITECT	SENIOR TOWN PLANNER
ASSTT. TOWN PLANNER	DIVINL. TOWN PLANNER
OFFICE OF THE SENIOR TOWN PLANNER, U.T., CHANDIGARH.	
DRAWN BY: HARISH & NEERAJ	CHECKED BY:
SCALE : 1 cm : 15m.	
DRG. NO.: 330	JOB NO.: M-16
DATED: 24.10.2019	
REVISED LAYOUT PLAN OF IT HABITAT, RAJIV GANDHI CHANDIGARH TECHNOLOGY PARK	